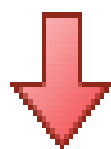


Monthly IHSG



4,223.91
-285.70
-6.34%

Monthly LS-27



181.60
-18.06
-9.05%

International	Close	MoM Chg	(%)
DJIA	16,272.01	(256.02)	(1.55%)
Nasdaq	4,627.09	(149.42)	(3.13%)
S&P 500	1,923.82	(48.36)	(2.45%)
FTSE 100	6,072.47	(175.47)	(2.81%)
Nikkei 225	17,722.42	(1168.06)	(6.18%)
Hang Seng	20,846.30	(824.28)	(3.80%)
STI	2,801.85	(119.59)	(4.09%)

Exchange Rates	Last	MoM Chg	(%)
USD / IDR	14703	628.80	4.47%
EUR / USD	1.1191	(0.01)	(0.47%)
USD / JPY	119.71	(0.99)	(0.82%)
GBP / USD	1.5144	(0.02)	(1.60%)
USD / CNY	6.357	(0.01)	(0.23%)
AUD / USD	0.7043	(0.01)	(1.01%)

Others	Last	MoM Chg	(%)
S&P 500 Vltv (VIX)	22.55	(5.88)	(20.68%)
EIDO: US	17.55	(2.38)	(11.94%)

Sector	Last	MoM Chg	(%)
Composite	4223.91	(285.70)	(6.34%)
Agriculture	1633.77	27.58	1.72%
Basic Industry	339.83	(19.08)	(5.32%)
Cosumer Goods	2017.32	(89.24)	(4.24%)
Finance	605.74	(67.60)	(10.04%)
Infrastructure	858.76	(63.54)	(6.89%)
Mining	919.75	15.72	1.74%
Miscellaneous	948.71	(83.18)	(8.06%)
Manufacture	1064.07	(60.40)	(5.37%)
Property	434.27	(23.21)	(5.07%)
Trade and Servic	831.14	(44.46)	(5.08%)

Source: Bloomberg

Technical Analyst:

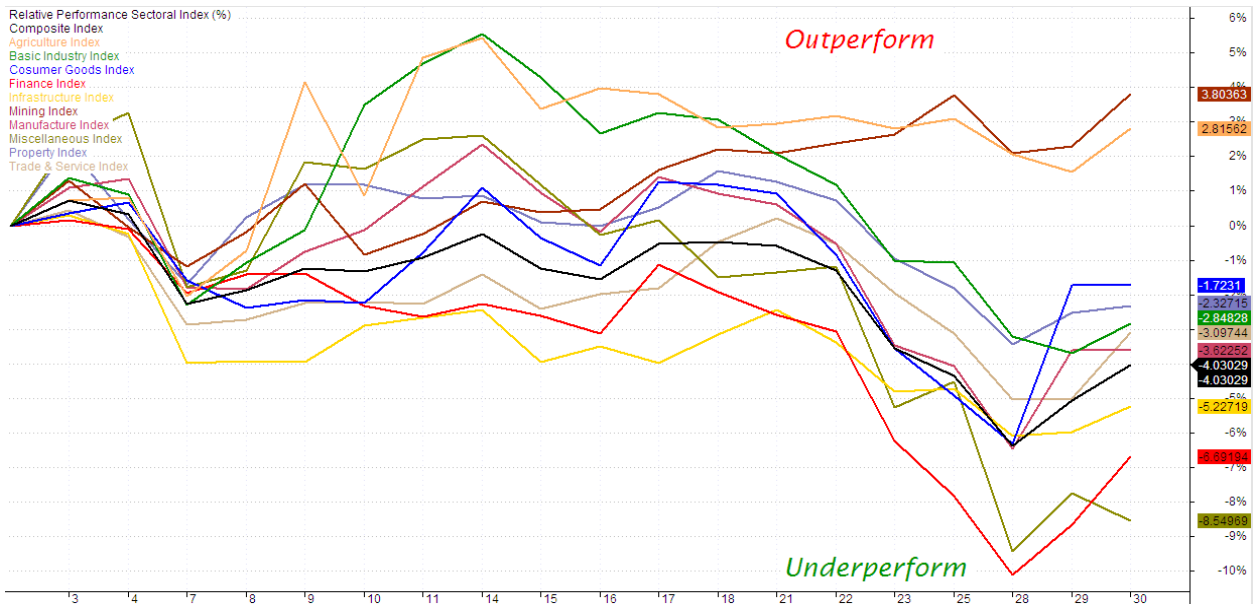
Lanjar Nafi

lanjar@reliance-securities.com

021-57905455 ext. 214

your **reliable** partner | 1

RELATIVE PERFORMANCE SECTORAL INDEX



Comment:

Upside potentially:

Finance Index declined after reached at outperform state. The index has arrived at underperform state and trying to rebound.

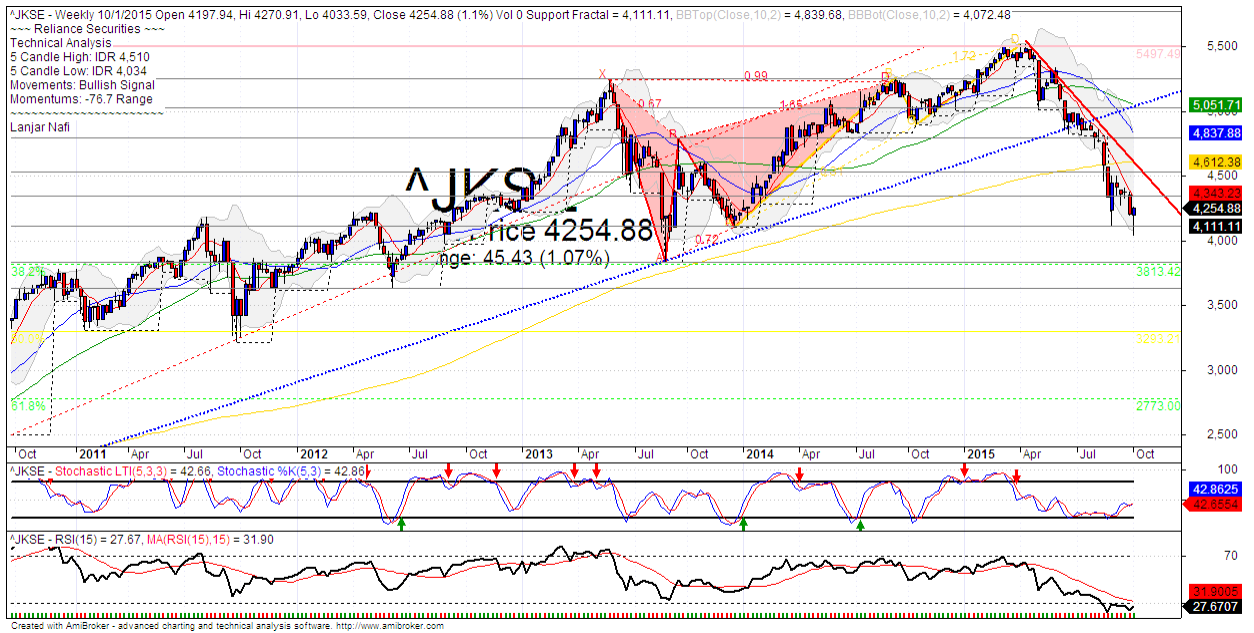
Miscellaneous Index still at underperforming state since last month. The price of stock in the index has cheap and rebound potential.

Downside potentially:

Mining Index surged significantly after the price of commodity rebounded last month. So has the potential to move higher is limited because the index has reached the area close to over perform. The index has a relative performance at 3.80 %.

Agriculture Index also surged significantly after rebounded from underperforming state last. The index has potentially reversal perform to under-perform.

IHSG Weekly Charts



S1	4110	R1	4345
S2	3835	R2	4535
S3	3635	R3	4800

Comment:

IHSG has pulled back MA7 resistance level. Trading range 4034-4510. The index potentially has rebound formations at support level after forming bullish harami candlestick pattern.

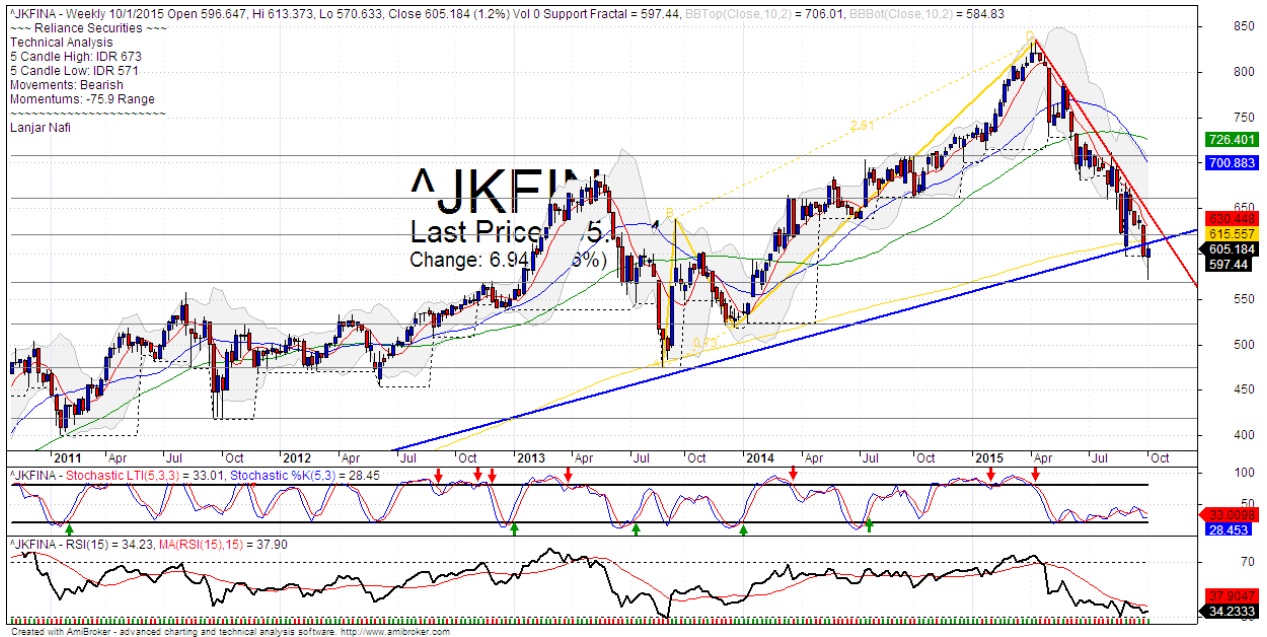
By the first October 2015, The Index has forming a bullish harami at lower bands. It's a reversal signal.

Stochastic, has bullish consolidations after golden-cross at oversold state. Broad upside potential. Relative Strength Index Indicator showing consolidations momentum at oversold oscillator.

This month stop-loss level 4100 (Break out support level). If break out support level the Index will potentially continue to 3800.

This month resistance level 4500 (Bearish trend resistance level), if the index has break out resistance level, it will continue to move upward to 4600 (back to MA200 target level).

Finance Index Weekly Charts



S1	570	R1	620
S2	525	R2	660
S3	475	R3	710

Comment:

The Finance Index declined significant last month after touching the bearish trend resistance level. Trading range 571-673.

By the first week in October, The index has forming a bullish harami candlestick pattern and false break bullish trend indications. It's a positif signal if the index has false break at 615 (MA200 resistance level).

Stochastic golden-cross indications at oversold state, broad upside potential. RSI on consolidations momentum at oversold oscillator. The price has reached the lower Bollinger band, signaling a potential reversal towards the upper band.

Long term bullish and Medium term bearish movement.

This month resistance level 640 (bearish trend resistance level), if the index has breaks out resistance level, it will continue to move upward to 700 (MA25 target level). But if the index breaks out support level at 560, it will to continue until 525.

HEAD OFFICE

Reliance Building

Jl. Pluit Kencana No. 15A,
Pluit Penjaringan
Jakarta 14450
T +62 21 661 7768
F +62 21 661 9884

RESEARCH DIVISION

Jasa Adhi Mulya
jasamulya@reliance-securities.com
Robertus Yanuar Hardy
robertus@reliance-securities.com
Aji Setiawan
aji@reliance-securities.com
Alan Milgerry
alan@reliance-securities.com
Shanti Dwi Jayanti
santi@reliance-securities.com
Lanjar Nafi Taulat I
lanjar@reliance-securities.com

Senior Fundamental Analyst
Senior Fundamental Analyst
Associate Fundamental Analyst
Associate Fundamental Analyst
Associate Fundamental Analyst
Technical Analyst

EQUITY DIVISION

Jakarta- Pluit

Jl. Pluit Kencana No. 15A
Pluit Penjaringan
Jakarta 14450
T +62 21 661 7768
F +62 21 661 9884

Bandung

Jl.Cisangkuy No.58
Bandung 40115
T +62 22 721 8200
F +62 22 721 9255

Surabaya - Gubeng

Jl. Bangka No. 22
Surabaya 60281
T +62 31 501 1128
F +62 31 503 3196

Makassar

Jl. Boto Lempangan No. 34 J
Makassar 90113
T +62 411 3632388
F +62 411 3614634

Jakarta - Sudirman

Menara Batavia 27th floor
Jl. KH. Mas Mansyur Kav 126
Jakarta 10220
T +62 21 5790 5455
F +62 21 5795 0728

Tasikmalaya

Ruko Tasik Indah Plaza No.21
Jl. KHZ Mustofa No. 345
Tasikmalaya 46121
T +62 265 345000
F +62 265 345003

Surabaya - Diponegoro

Jl. Diponegoro 141-143
Surabaya 60264
T +62 31 567 0388
F +62 31 561 0528

Pekanbaru

Jl. Sumatera No. 9, Simpang
Empat, Pekanbaru - Riau
28000
T +62 761 7894368
F +62 761 7894370

Jakarta - Kebon Jeruk

Plaza Kebon Jeruk
Jl.Raya Perjuangan Blok A/2
Jakarta 11530
T +62 21 532 4074
F +62 21 536 2157

Yogyakarta

Jl. Juadi No. 1 Kotabaru
Yogyakarta 55224
T +62 274 550 123
F +62 274 551 121

Bali - Denpasar

Dewata Square Blok A3
Jl. Letda Tantular Renon
Denpasar 802361
T +62 361 225099
F +62 361 245099

Medan

Jl. Teuku Amir Hamzah No.26
T +62 61 6638592
F +62 61 6638023

BSD

Jl. Pahlawan Seribu Ruko BSD
Sektor 7 Blok RK kav. 9
Tangerang 15310
T +62 21 5387495
F +62 21 5387494

Surakarta

Jl. Slamet Riyadi 330A
Solo 57145
T +62 271 736599
F +62 271 733478

Pontianak

Jl. MT Haryono No. 6
Pontianak 78121
T +62 561 575674
F +62 561 575670

Bali - Ubud

Jl. Suweta 19, Ubud
Gianyar, Bali 80571
T +62 361 970692

Jakarta - Centro

Ruko Centro Residence Kav. 4-5
Tower C Lt. 1 No. 26-29
Jl. Macan, Daan Mogot
Jakarta 14450
T +62 21 56945227
F +62 21 56945226

Malang

Jl. Guntur No. 19
Malang 65112
T +62 341 347 611
F +62 341 347 615

Balikpapan

Ruko Bukit Damai Indah
Blok I, No. 3, Rt.34
Jl. MT. Haryono, Gunung
Bahagia, Balikpapan Selatan
76114
T +62 542 746313-16
F +62 542 746317

IDX CORNER & INVESTMENT GALLERY

UPN "Veteran" Jakarta

Jl. RS Fatmawati, Pondok Labu
Jakarta 12450
T +62 21 7656971 ext. 197
F +62 21 7656971 ext. 138

President University

Resto Plaza 1F - Jababeka
Education Park
Jl. Ki Hajar Dewantara Raya
Cikarang - Bekasi 17550
T +62 21 89106030

Universitas Siliwangi Tasikmalaya

Jl. Siliwangi No. 24
Tasikmalaya 46151
T +62 265 323685
F +62 265 323534

UPN "Veteran" Yogyakarta

Jl. Babarsari 2, Tambak Bayan
Yogyakarta
T +62 274 485268
F +62 274 487147

Universitas Muhammadiyah Sidoarjo

Jl. Majapahit 866B
Sidoarjo, Jawa Timur
T +62 31 8945444
F +62 31 8949333

Universitas Tanjungpura Pontianak

Jl. Jendral Ahmad Yani
Pontianak 78124
T +62 561 743465
F +62 561 766840

STIE "AUB" Surakarta

Jl. Mr. Sartono 97, Cengklik
Nusukan, Surakarta 57135
T +62 271 854803
F +62 271 853084

Universitas Surabaya

Jl. Raya Kalirungkut
Surabaya 60293
T +62 31 298 1203
F +62 31 298 1204

Universitas Muhammadiyah Gresik

Jl. Sumatra 101 GKB
Gresik 61121
T +62 31 395 1414
F +62 31 395 2585

Universitas Negeri Malang

Jl. Surabaya No. 6
Malang 65145
T +62 341 585914
F +62 341 552888

Universitas Muhammadiyah Malang

Jl. Raya Tlogomas 246
Malang 65144
T +62 341 464318-9
F +62 341 460782

Universitas Pesantren Tinggi Darul 'Ulum

Gd. Pasca Sarjana UNIPDU
Komplek PP Darul 'Ulum
Peterongan, Jombang
Jawa Timur
Telp. 0321-873655
Fax. 0321-875771

Universitas Brawijaya

Jl. Veteran Malang 65145
T +62 341 551611 / 575777
F +62 341 565420

STIE Malangkeucwara

Jl. Terusan Candi Kalasan
Malang 65142
T +62 341 491813
F +62 341 495619

Universitas Jember

Jl. Jawa No. 17
Jember 68121
T +62 331 330732
F +62 331 326419

STIESIA Surabaya

Jl. Menur Pumpungan 30
Surabaya
T +62 31 5947505
F +62 31 5932218

Universitas 17 Agustus 1945

Banyuwangi
Jl. Adi Sucipto 26
Banyuwangi, Jawa Timur
T +62 333 419613
F +62 333 419163

Universitas Pesantren Tinggi Darul Ulum

Kompleks PP Darul Ulu,
Peterongan
Jombang, Jawa Timur
60281
Telp. (0321) 873655
Faks. (0321) 875771

Politeknik Kediri

Jl. Mayor Bismo No. 27
Kediri 64121
T +62 354 683128
F +62 354 683128

Sekolah Tinggi Manajemen Informatika dan Teknik Komputer Bali

Jalan Puputan No. 86, Renon,
Denpasar
Telp. +62361 244445
Faks. +62361 264773

Universitas Muhammadiyah

Pontianak
Fakultas Ekonomi UM
Pontianak
Jl. Ahmad Yani, No. 111,
Pontianak 78124
Telp. +62561 743465
Faks. +62561 766840

Universitas Negeri Makassar

Fakultas Ekonomi Gedung BT
Lt.2
Jl. A.P. Pettarani, Kampus
UNM, Gunungsari Baru
Makassar 90222
T +62 411 889464 / 881244
F +62 411 887604

STIE AAS

Jalan Slamet Riyadi No 361
Kartasura, Surakarta
Telp. (0271) 726156
Faks. (0271) 726156

Disclaimer:

Information, opinions and recommendations contained in this document are presented by PT Reliance Securities Tbk. from sources that are considered reliable and dependable. This document is not an offer, invitation or any kind of representations to decide to buy or sell stock. Investment decisions taken based on this document is not the responsibility of PT Reliance Securities Tbk. PT Reliance Securities Tbk. reserves the right to change the contents of this document at any time without prior notice.