

IHSG



4557.67
111.21
2.50%

Vol (Mn): 4316
Val (Bn): 5794

LS-27



205.1
6.1
3.07%

Sector Indices	Last	Change	Change %
Agriculture	1616	26.80	1.66
Mining	855	(2.81)	(0.33)
Basic Industry	413	16.77	4.06
Misc Industry	1106	63.87	5.77
Consumer	2107	29.93	1.42
Property	482	8.26	1.71
Infrastructure	940	11.17	1.19
Finance	679	27.82	4.09
Trade	809	6.07	0.75
Manufacture	1179	33.38	2.83

Source: Bloomberg

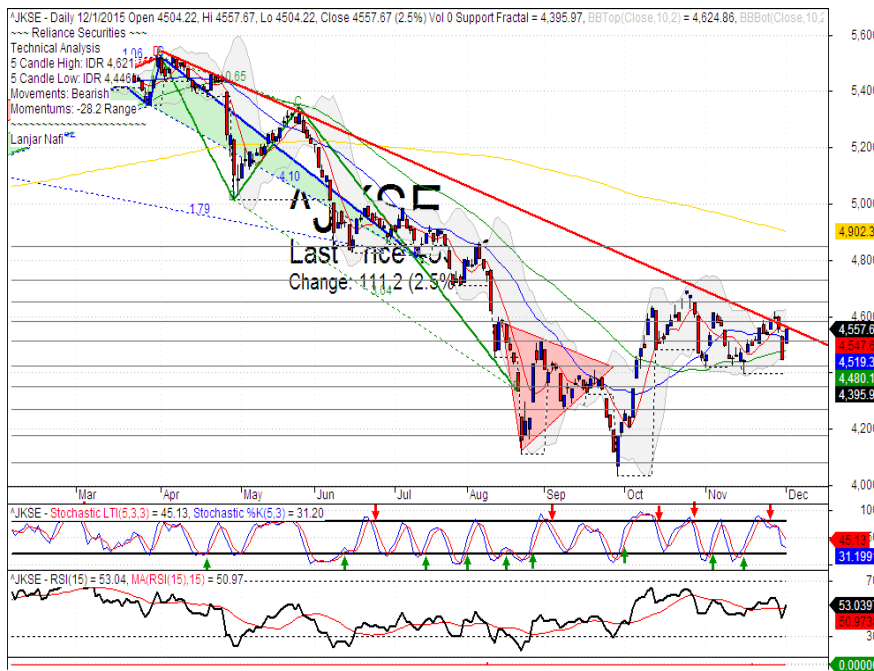
Most Active	Last	Change %	Freq
TLKM	2,940	0.3	8,711
BBNI	4,970	4.2	8,472
BBCA	13,250	7.1	8,325
BMRI	8,900	4.7	6,299
PGAS	2,725	2.6	6,240

Most Volume	Last	Change %	M Lot
MYRX	655	0.0	155.86
ASRI	361	6.5	144.21
TLKM	2,940	0.3	114.95
LPKR	1,360	5.8	96.33
SSIA	605	3.4	91.01

Most Value	Last	Change %	Rp Bil
BBRI	11,250	4.4	417.37
BBCA	13,250	7.1	378.51
TLKM	2,940	0.3	338.61
ASII	6,375	7.6	323.38
BBNI	4,970	4.2	209.77

Source: Bloomberg

IHSG Technical Review



R3	4730
R2	4655
R1	4585
Last	4557.67
S1	4515
S2	4420
S3	4350

Comment:
Bullish consolidations. Huge trading volume.

Stochastic limited bearish movement at near oversold state. Broad golden-cross indications.

RSI has bullish reversal momentum at middle oscillator.

Long term bearish movement.

Stop-loss level 4450 (Break out MA50 support level).
Upside target at 4620 (Upper bands target level).

ASII



R3	7200
R2	6925
R1	6600
Last	6375
S1	6350
S2	6050
S3	5800
SPECULATIVE BUY	

Comment:
 Whipsaw at MA50 support level. Huge trading volume. Reversal signal.

Stochastic, golden-cross at oversold state, Broad upside potential.

RSI, Bullish momentum from oversold oscillator.

Medium term bullish trend movement.

Stop-loss level at 6100 (Break out MA50 support level). Upside target at 6900 (MA200 target level).

JSMR



R3	5300
R2	5100
R1	4915
Last	4770
S1	4700
S2	4500
S3	4310
SPECULATIVE BUY	

Comment:
 Bullish harami. Moderate trading volume. Reversal signal.

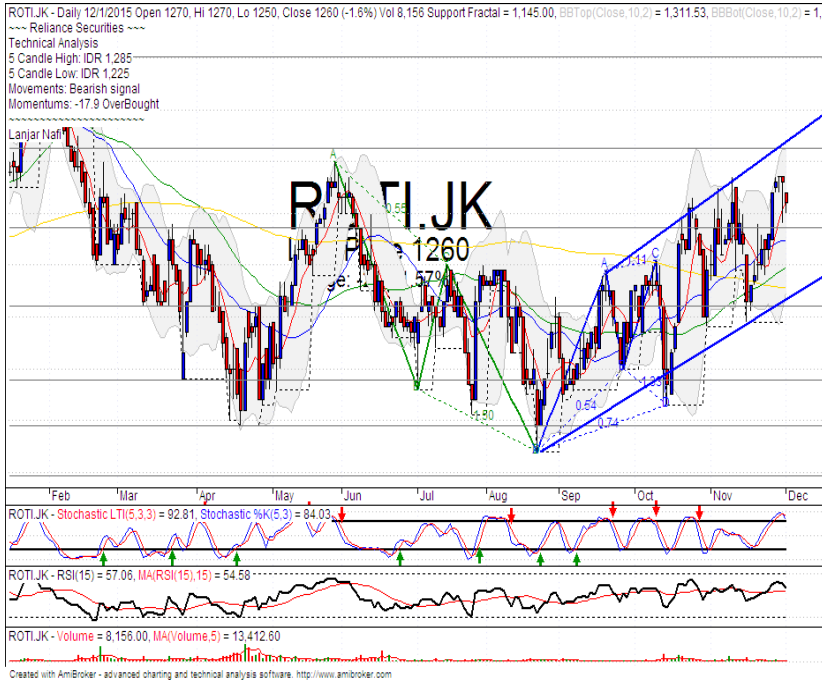
Stochastic, golden-cross at oversold state. Broad upside potential.

RSI, bullish momentum from oversold oscillator.

Long term bearish movement.

Stop-loss if break out support level at 4650. Upside target at 5050 (MA50 and bearish trend resistance level). Recommended buying price at 4760.

ROTI



R3	1480
R2	1400
R1	1310
Last	1260
S1	1235
S2	1160
S3	1090

SELL

Comment:

Bearish momentum. Moderate trading volume. Reversal signal after pulled back upper bands.

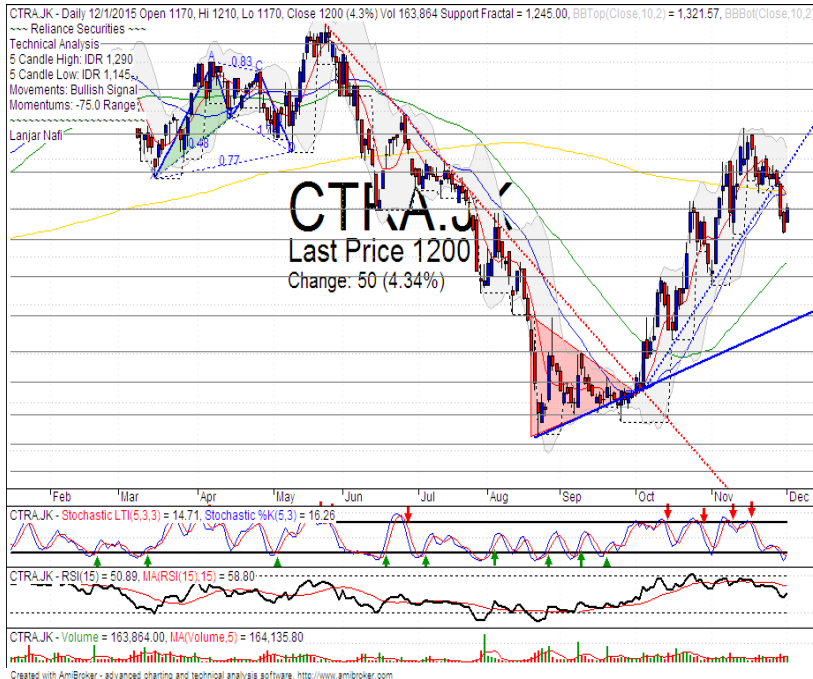
Stochastic, dead-cross at overbought state. Broad downside potential.

RSI bearish reversal momentum at overbought oscillator.

Medium term bullish trend movement

Stop-loss level at 1230 (break out support level). Downside potential at 1180 (MA200 support level).

CTRA



R3	1350
R2	1275
R1	1200
Last	1200
S1	1135
S2	1060
S3	975

SPECULATIVE BUY

Comment:

Above the stomach pattern. Moderate trading volume. Reversal signal,

Stochastic, golden-cross at oversold state. Broad upside potential.

RSI, bullish consolidations momentum at middle oscillator.

Medium term bullish trend movement.

Stop-loss level 1125 (Break out support level). Upside target at 1350. Recommended buying price at 1200.

Stocks	S2	S1	Closing Price	R1	R2	Technical Notes	Rec	Stop Loss	Rec Buy Prc	Target Price
Plantation										
AALI	16,775	17,700	17,900	18,500	19,600	Bullish harami	TB	17,600		18,500
LSIP	1,120	1,230	1,250	1,335	1,430	Bullish harami	TB	1,220		1,345
Mining										
INCO	1,400	1,550	1,620	1,720	1,915	Oversold	W	1,540		
Consumer										
UNVR	33,000	35,350	37,400	37,575	40,000	Bearish momentum	PS	35,300		
INDF	4,780	5,050	5,225	5,350	5,600	Bullish harami	TB	5,000		5,500
KLBF	1,300	1,370	1,390	1,425	1,485	Bullish consolidations	TB	1,360		1,450
Trading										
ACES	700	745	800	780	845	Consolidations	S	740		
AKRA	5,800	6,100	6,225	6,300	6,600	Bullish momentum	H	6,000		6,300
UNTR	15,225	16,000	16,300	17,000	18,000	Oversold	W	16,000		
Property & Construction										
LPCK	7,100	7,500	7,650	8,100	8,500	Above the stomach	TB	7,400		8,100
WIKA	2,600	2,800	2,865	3,000	3,225	Consolidations	W	2,780		
BSDE	1,615	1,730	1,740	1,830	1,945	Consolidations	PS	1,725		
WSKT	1,550	1,650	1,675	1,770	1,900	Stoch golden-cross	SB	1,640	1,670	1,770
ADHI	1,910	2,090	2,235	2,275	2,435	Stoch golden-cross	TB	2,080		2,350
Basic Industry & Chemical										
SMGR	10,400	11,000	11,025	11,500	12,000	Stoch golden-cross	B	10,950	11,000	11,800
CPIN	3,170	3,350	3,390	3,600	3,845	Consolidations	PS	3,340		
MAIN	1,315	1,410	1,410	1,515	1,660	Bearish momentum	S	1,400		
INTP	19,200	20,000	20,425	20,650	21,300	Consolidations	TB	19,700		21,300
Miscellaneous										
SRIL	285	330	377	415	495	Bearish momentum	PS	330		
ASII	6,050	6,350	6,375	6,600	6,900	Above the stomach	SB	6,325	6,350	6,600
Finance										
BBTN	1,170	1,230	1,285	1,290	1,350	Stoch dead-cross	S	1,220		
BMRI	8,400	8,700	8,900	9,000	9,400	Consolidations	W	8,350		
BTPN	2,290	2,465	2,550	2,650	2,800	Oversold	W	2,460		
BJBR	660	695	730	730	770	Bullish harami	TB	690		750
BBRI	10,300	10,900	11,250	11,500	12,200	Consolidations	H	10,800		11,500
Infrastructure										
TLKM	2,780	2,880	2,940	3,010	3,160	Stoch dead-cross	PS	2,870		
PGAS	2,370	2,650	2,725	2,880	3,165	Stoch golden-cross indications	W	2,870		

Source : Reliance Securities

Analyst Conclusion:

Gap down after break out confirmations pulled back resistance. And now the index arrived at lower bands support level. Corrections rebound potential.

Legend :

- B: BUY (allocate till 100% of the weighted capital to accumulate, higher than 50% upside probability)
- SB: SPECULATIVE BUY (allocate 25%-50% of the weighted capital to accumulate, 25%-50% upside probability)
- W: WAIT (wait for proper entry level, do the stop-loss if necessary)
- H: HOLD (hold the portfolio position, aim for the best price to distribute)
- PS: PARTIAL SELL (distribute 25%-50% part of the portfolio, 25%-50% downside probability)
- S: SELL (distribute till 100% of the portfolio, higher than 50% downside probability)
- TB: TRADING BUY (short term or intraday trading within a tight trading range. Highly speculative).

Ticker	Resistance Fractal	Price 12/1/2015	Support Fractal	Weekly High	Weekly Low	Indicator			Moving Average			
						Stochastic	RSI	B. Band	25 Days	50 Days	200 Days	
AALJJK	21,000	17,900	18,000	18,750	17,900	Neutral	Bearish	Neutral	Middle Bands	Under	Under	Under
ACESJK	760	800	710	815	805	Neutral	Bearish	Neutral	Middle Bands	Upper	Upper	Upper
ADHIJK	2,305	2,235	2,150	2,305	2,220	Neutral	Bullish	Neutral	Middle Bands	Under	Upper	Under
ADROJK	595	545	560	595	560	Neutral	Bearish	Neutral	Middle Bands	Under	Under	Under
AISAJK	1,520	1,450	1,480	1,520	1,485	Oversold	Bullish	Neutral	Lower Bands	Under	Under	Under
AKRAJK	6,200	6,225	5,875	6,225	5,975	Neutral	Bullish	Neutral	Upper Bands	Upper	Upper	Upper
ANTMJK	363	318	306	363	324	Oversold	Bearish	Neutral	Middle Bands	Under	Under	Under
APLNJK	313	298	248	299	289	Overbought	Bearish	Neutral	Middle Bands	Upper	Upper	Under
ASIIJK	6,850	6,375	6,175	6,375	6,200	Neutral	Bullish	Neutral	Middle Bands	Upper	Upper	Under
ASRIJK	353	361	323	362	340	Neutral	Bullish	Neutral	Upper Bands	Upper	Under	Under
BBCAJK	13,725	13,250	12,900	13,725	13,125	Neutral	Bearish	Neutral	Middle Bands	Upper	Upper	Under
BBKPJK	695	690	675	695	685	Neutral	Bullish	Neutral	Upper Bands	Upper	Upper	Under
BBNIJK	5,225	4,970	4,760	5,225	4,990	Oversold	Bearish	Neutral	Middle Bands	Upper	Upper	Under
BBRIJK	11,600	11,250	10,500	11,600	11,300	Neutral	Bearish	Neutral	Middle Bands	Upper	Upper	Upper
BBTNJK	1,210	1,285	1,215	1,305	1,270	Overbought	Bearish	Neutral	Middle Bands	Upper	Upper	Upper
BDMNJK	2,980	3,110	2,805	3,110	2,870	Neutral	Bullish	Neutral	Upper Bands	Upper	Upper	Under
BHITJK	214	142	166	183	146	Oversold	Bearish	Oversold	Lower Bands	Under	Under	Under
BIBRJK	755	730	700	755	730	Oversold	Bearish	Neutral	Middle Bands	Under	Upper	Under
BJTMJK	461	432	420	438	425	Neutral	Bullish	Neutral	Middle Bands	Under	Upper	Under
BKSLJK	78	61	68	71	64	Oversold	Bearish	Oversold	Lower Bands	Under	Under	Under
BMRIJK	9,650	8,900	8,150	9,275	8,950	Neutral	Bearish	Neutral	Middle Bands	Upper	Upper	Under
BMTRJJK	880	825	805	835	820	Neutral	Bullish	Neutral	Middle Bands	Under	Under	Under
BSDEJK	1,700	1,740	1,655	1,745	1,720	Neutral	Bearish	Neutral	Upper Bands	Upper	Upper	Under
BTPNJK	2,710	2,550	2,625	2,710	2,550	Oversold	Bearish	Oversold	Lower Bands	Under	Under	Under
BWPTJK	249	139	154	176	143	Oversold	Bullish	Oversold	Middle Bands	Under	Under	Under
CMNPJK	1,740	1,600	1,520	1,650	1,600	Neutral	Bullish	Neutral	Middle Bands	Under	Under	Under
CPINJK	2,820	3,390	3,125	3,390	3,220	Neutral	Bearish	Overbought	Middle Bands	Upper	Upper	Upper
CSAPJK	377	373	370	376	373	Neutral	Bullish	Neutral	Middle Bands	Upper	Upper	Under
CTRAJK	1,310	1,200	1,245	1,290	1,195	Oversold	Bullish	Neutral	Middle Bands	Under	Upper	Under
CTRPJK	575	424	428	460	434	Neutral	Bearish	Neutral	Middle Bands	Under	Under	Under
CTRSJK	2,675	2,115	2,230	2,265	2,190	Oversold	Bearish	Neutral	Middle Bands	Under	Under	Under
DILDJK	510	499	496	510	505	Neutral	Bearish	Neutral	Middle Bands	Under	Under	Under
EXCLJK	3,790	3,575	3,565	3,790	3,635	Neutral	Bearish	Neutral	Middle Bands	Upper	Upper	Under
GYCRMJK	52,650	51,000	48,975	51,600	50,375	Neutral	Bearish	Neutral	Middle Bands	Upper	Upper	Upper
GIAAJK	313	304	297	310	302	Neutral	Bullish	Neutral	Middle Bands	Under	Under	Under
QITLJK	610	550	570	610	555	Oversold	Bearish	Neutral	Middle Bands	Under	Under	Under
HEXAJK	1,655	1,355	1,600	1,650	1,550	Oversold	Bearish	Oversold	Lower Bands	Under	Under	Under
HRUMJK	815	700	770	785	705	Oversold	Bullish	Oversold	Lower Bands	Under	Under	Under
ICBPJK	12,950	13,000	11,925	13,000	12,650	Neutral	Bullish	Neutral	Upper Bands	Upper	Upper	Under
IMASJK	2,650	2,550	2,550	2,650	2,560	Neutral	Bearish	Neutral	Middle Bands	Under	Under	Under
INCOJK	1,905	1,620	1,645	1,830	1,660	Neutral	Bearish	Neutral	Middle Bands	Under	Under	Under
INDFJK	5,525	5,225	5,325	5,525	5,300	Neutral	Bullish	Neutral	Middle Bands	Under	Under	Under
INDYJK	177	130	135	177	137	Neutral	Bearish	Oversold	Middle Bands	Under	Under	Under
INTAJK	263	255	250	263	255	Neutral	Bearish	Neutral	Middle Bands	Upper	Upper	Under
INTPJK	21,200	20,425	19,450	21,200	20,000	Neutral	Bearish	Neutral	Middle Bands	Upper	Upper	Under
ITMGJK	7,625	6,475	7,000	7,175	6,850	Oversold	Bearish	Oversold	Lower Bands	Under	Under	Under
JPFAJK	478	467	379	478	462	Overbought	Bearish	Neutral	Middle Bands	Upper	Upper	Under
JSMRJK	5,025	4,770	4,855	5,025	4,770	Oversold	Bullish	Neutral	Middle Bands	Under	Under	Under
KIJAJK	232	218	214	232	218	Neutral	Bearish	Neutral	Middle Bands	Under	Upper	Under
KLBFJK	1,375	1,390	1,315	1,400	1,370	Neutral	Bearish	Neutral	Upper Bands	Upper	Under	Under
KRASJK	320	304	304	318	305	Oversold	Bearish	Neutral	Middle Bands	Under	Under	Under
LPCKJK	8,050	7,650	7,725	8,050	7,625	Oversold	Bearish	Neutral	Middle Bands	Under	Under	Under
LPKRJK	1,315	1,360	1,110	1,360	1,310	Overbought	Bearish	Neutral	Middle Bands	Upper	Upper	Upper
LPFFJK	16,875	16,475	14,500	16,875	16,050	Neutral	Bearish	Neutral	Middle Bands	Upper	Upper	Under
LSIPJK	1,345	1,250	1,235	1,335	1,265	Neutral	Bearish	Neutral	Middle Bands	Under	Under	Under
MAINJK	1,685	1,410	1,175	1,685	1,280	Neutral	Bearish	Neutral	Middle Bands	Upper	Upper	Under
MAPIJK	4,540	4,250	3,270	4,540	4,250	Neutral	Bearish	Neutral	Middle Bands	Upper	Upper	Under
MASAJK	236	230	225	230	230	Neutral	Bullish	Neutral	Middle Bands	Under	Under	Under
MNCNJK	1,840	1,770	1,595	1,775	1,690	Neutral	Bullish	Neutral	Upper Bands	Upper	Upper	Under
MPPAJK	2,095	1,915	1,930	2,015	1,895	Oversold	Bullish	Neutral	Middle Bands	Under	Under	Under
MTLAJK	247	215	206	247	215	Neutral	Bearish	Neutral	Middle Bands	Upper	Upper	Under
MYORJK	26,650	25,900	25,350	26,650	25,900	Neutral	Bearish	Neutral	Middle Bands	Under	Under	Under
PGASJK	3,080	2,725	2,560	3,025	2,770	Oversold	Bearish	Neutral	Middle Bands	Under	Under	Under
PTBAJK	6,000	5,725	5,700	6,000	5,750	Neutral	Bearish	Neutral	Middle Bands	Under	Under	Under
RALSJK	735	690	680	735	700	Neutral	Bearish	Neutral	Middle Bands	Under	Upper	Under
ROTIJK	1,240	1,260	1,145	1,285	1,270	Overbought	Bearish	Neutral	Middle Bands	Upper	Upper	Upper
SCMAJK	3,455	3,035	2,990	3,350	3,135	Oversold	Bearish	Neutral	Middle Bands	Under	Under	Under
SGROJK	1,480	1,445	1,295	1,480	1,445	Neutral	Bearish	Neutral	Middle Bands	Upper	Upper	Under
SIMPJK	411	377	392	400	380	Oversold	Bearish	Oversold	Middle Bands	Under	Under	Under
SMCBJK	1,160	1,065	1,025	1,140	1,075	Neutral	Bearish	Neutral	Middle Bands	Upper	Upper	Under
SMGRJK	11,350	11,025	10,925	11,350	11,075	Oversold	Bullish	Neutral	Middle Bands	Upper	Upper	Under
SMRAJK	1,620	1,560	1,415	1,600	1,555	Neutral	Bearish	Neutral	Middle Bands	Upper	Upper	Under
SRILJK	398	377	362	393	376	Neutral	Bearish	Neutral	Middle Bands	Upper	Upper	Upper
SSIAJK	615	605	560	625	585	Neutral	Bullish	Neutral	Middle Bands	Under	Under	Under
SSMSJK	1,710	1,580	1,600	1,675	1,605	Oversold	Bullish	Oversold	Middle Bands	Under	Under	Under
TLKMJK	2,950	2,940	2,800	2,990	2,925	Overbought	Bearish	Neutral	Middle Bands	Upper	Upper	Upper
TOTLJK	670	635	630	670	650	Neutral	Bearish	Neutral	Middle Bands	Under	Under	Under
UNTRJK	17,375	16,300	16,550	17,200	16,700	Neutral	Bearish	Neutral	Middle Bands	Under	Under	Under
UNVRJK	38,500	37,400	36,650	38,500	37,825	Neutral	Bearish	Neutral	Middle Bands	Upper	Under	Under

Source - Reliance Research

Legend :

- Movement: Bullish and Bearish (Indicator Stochastic)
- Momentum: Oversold, Overbought and Neutral (Indicator RSI)
- Resistance Fractal: Strong Resistance
- Support Fractal: Strong Support
- Green: Good Conditions
- Red: Poor Conditions

HEAD OFFICE

Reliance Building

Jl. Pluit Kencana No. 15A,
Pluit Penjaringan
Jakarta 14450
T +62 21 661 7768
F +62 21 661 9884

RESEARCH DIVISION

Jasa Adhi Mulya
jasamulya@reliance-securities.com
Robertus Yanuar Hardy
robertus@reliance-securities.com
Aji Setiawan
aji@reliance-securities.com
Alan Milgerry
alan@reliance-securities.com
Shanti Dwi Jayanti
santi@reliance-securities.com
Lanjar Nafi Taulat I
lanjar@reliance-securities.com

Senior Analyst
Senior Analyst
Associate Analyst
Associate Analyst
Associate Analyst
Technical Analyst

BRANCE OFFICE

Jakarta- Pluit

Jl. Pluit Kencana No. 15A
Pluit Penjaringan
Jakarta 14450
T +62 21 661 7768
F +62 21 661 9884

Bandung

Jl.Cisangkuy No.58
Bandung 40115
T +62 22 721 8200
F +62 22 721 9255

Surabaya - Gubeng

Jl. Bangka No. 22
Surabaya 60281
T +62 31 501 1128
F +62 31 503 3196

Makassar

Jl. Boto Lempangan No. 34 J
Makassar 90113
T +62 411 3632388
F +62 411 3614634

Jakarta - Sudirman

Menara Batavia 27th floor
Jl. KH. Mas Mansyur Kav 126
Jakarta 10220
T +62 21 5790 5455
F +62 21 5795 0728

Tasikmalaya

Ruko Tasik Indah Plaza No.21
Jl. KHZ Mustofa No. 345
Tasikmalaya 46121
T +62 265 345000
F +62 265 345003

Surabaya - Diponegoro

Jl. Diponegoro 141-143
Surabaya 60264
T +62 31 567 0388
F +62 31 561 0528

Pekanbaru

Jl. Sumatera No. 9, Simpang
Empat, Pekanbaru - Riau
28000
T +62 761 7894368
F +62 761 7894370

Jakarta - Kebon Jeruk

Plaza Kebon Jeruk
Jl.Raya Perjuangan Blok A/2
Jakarta 11530
T +62 21 532 4074
F +62 21 536 2157

Yogyakarta

Jl. Juadi No. 1 Kotabaru
Yogyakarta 55224
T +62 274 550 123
F +62 274 551 121

Bali - Denpasar

Dewata Square Blok A3
Jl. Letda Tantular Renon
Denpasar 802361
T +62 361 225099
F +62 361 245099

Medan

Jl. Teuku Amir Hamzah No.26
T +62 61 6638592
F +62 61 6638023

BSD

Jl. Pahlawan Seribu Ruko BSD
Sektor 7 Blok RK kav. 9
Tangerang 15310
T +62 21 5387495
F +62 21 5387494

Surakarta

Jl. Slamet Riyadi 330A
Solo 57145
T +62 271 736599
F +62 271 733478

Pontianak

Jl. MT Haryono No. 6
Pontianak 78121
T +62 561 575674
F +62 561 575670

Jakarta - Centro

Ruko Centro Residence Kav. 4-5
Tower C Lt. 1 No. 26-29
Jl. Macan, Daan Mogot
Jakarta 14450
T +62 21 56945227
F +62 21 56945226

Malang

Jl. Guntur No. 19
Malang 65112
T +62 341 347 611
F +62 341 347 615

Balikpapan

Ruko Bukit Damai Indah
Blok I, No. 3, Rt.34
Jl. MT. Haryono, Gunung
Bahagia, Balikpapan Selatan
76114
T +62 542 746313-16
F +62 542 746317

IDX CORNER & INVESTMENT GALLERY

UPN "Veteran" Jakarta

Jl. RS Fatmawati, Pondok Labu
Jakarta 12450
T +62 21 7656971 ext. 197
F +62 21 7656971 ext. 138

President University

Resto Plaza 1F - Jababeka
Education Park
Jl. Ki Hajar Dewantara Raya
Cikarang - Bekasi 17550
T +62 21 89106030

Universitas Siliwangi Tasikmalaya

Jl. Siliwangi No. 24
Tasikmalaya 46151
T +62 265 323685
F +62 265 323534

UPN "Veteran" Yogyakarta

Jl. Babarsari 2, Tambak Bayan
Yogyakarta
T +62 274 485268
F +62 274 487147

Universitas Muhammadiyah Sidoarjo

Jl. Majapahit 866B
Sidoarjo, Jawa Timur
T +62 31 8945444
F +62 31 8949333

Universitas Tanjungpura Pontianak

Jl. Jendral Ahmad Yani
Pontianak 78124
T +62 561 743465
F +62 561 766840

Universitas Islam Kalimantan FE UNISKA

Jl. Adiyaksa No. 2, Kayu Tangi
Banjarmasin
Tlp. 0511 3303871
Fax. 0511 3303871

STIE "AUB" Surakarta

Jl. Mr. Sartono 97, Cengklik
Nusukan, Surakarta 57135
T +62 271 854803
F +62 271 853084

Universitas Surabaya

Jl. Raya Kalirungkut
Surabaya 60293
T +62 31 298 1203
F +62 31 298 1204

Universitas Muhammadiyah Gresik

Jl. Sumatra 101 GKB
Gresik 61121
T +62 31 395 1414
F +62 31 395 2585

Universitas Negeri Malang

Jl. Surabaya No. 6
Malang 65145
T +62 341 585914
F +62 341 552888

Universitas Muhammadiyah Malang

Jl. Raya Tlogomas 246
Malang 65144
T +62 341 464318-9
F +62 341 460782

STIE Tri Bhakti

Jl. Teuku Umar No. 24
Cut Meutia, Bekasi
Tlp. 021 82429400
Fax. 021 82429500

Universitas Brawijaya

Jl. Veteran Malang 65145
T +62 341 551611 / 575777
F +62 341 565420

STIE Malangkecewara

Jl. Terusan Candi Kalasan
Malang 65142
T +62 341 491813
F +62 341 495619

Universitas Jember

Jl. Jawa No. 17
Jember 68121
T +62 331 330732
F +62 331 326419

STIESIA Surabaya

Jl. Menur Pumpungan 30
Surabaya
T +62 31 5947505
F +62 31 5932218

Universitas 17 Agustus 1945

Banyuwangi
Jl. Adi Sucipto 26
Banyuwangi, Jawa Timur
T +62 333 419613
F +62 333 419163

Universitas Pesantren Tinggi Darul Ulum

Kompleks PP Darul Ulu,
Peterongan
Jombang, Jawa Timur
60281
Telp. (0321) 873655
Faks. (0321) 875771

Politeknik Kediri

Jl. Mayor Bismo No. 27
Kediri 64121
T +62 354 683128
F +62 354 683128

Sekolah Tinggi Manajemen Informatika dan Teknik Komputer Bali

Jalan Puputan No. 86, Renon,
Denpasar
Telp. +62361 244445
Faks. +62361 264773

Universitas Muhammadiyah Pontianak

Fakultas Ekonomi UM
Pontianak
Jl. Ahmad Yani, No. 111,
Pontianak 78124
Telp. +62561 743465
Faks. +62561 766840

Universitas Negeri Makassar

Fakultas Ekonomi Gedung BT
Lt.2
Jl. A.P. Pettarani, Kampus
UNM, Gunungsari Baru
Makassar 90222
T +62 411 889464 / 881244
F +62 411 887604

STIE AAS Surakarta

Jalan Slamet Riyadi No 361
Kartasura, Surakarta
Telp. (0271) 726156
Faks. (0271) 726156

Disclaimer:

Information, opinions and recommendations contained in this document are presented by PT Reliance Securities Tbk. from sources that are considered reliable and dependable. This document is not an offer, invitation or any kind of representations to decide to buy or sell stock. Investment decisions taken based on this document is not the responsibility of PT Reliance Securities Tbk. PT Reliance Securities Tbk. reserves the right to change the contents of this document at any time without prior notice.