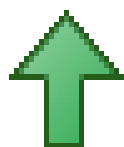


Monthly IHSG



4,770.96

155.80

3.38%

Monthly LS-27



215.99

8.09

3.89%

International	Close	MoM Chg	(%)
DJIA	16,516.50	50.20	0.30%
Nasdaq	4,557.95	(56.00)	(1.21%)
S&P 500	1,932.23	(8.01)	(0.41%)
FTSE 100	6,097.09	13.30	0.22%
Nikkei 225	16,025.76	(1492.54)	(8.52%)
Hang Seng	19,111.93	(571.18)	(2.90%)
STI	2,661.62	32.51	1.24%

Exchange Rates	Last	MoM Chg	(%)
USD / IDR	13361	(339.00)	(2.47%)
EUR / USD	1.0882	0.00	0.38%
USD / JPY	112.38	(8.85)	(7.30%)
GBP / USD	1.3938	(0.03)	(2.26%)
USD / CNY	6.541	(0.04)	(0.57%)
AUD / USD	0.7113	0.00	0.59%

Others	Last	MoM Chg	(%)
S&P 500 Vltv (VIX)	20.55	0.35	1.73%
EIDO: US	22.69	1.04	4.80%

Sector	Last	MoM Chg	(%)
Composite	4615.16	0.00	0.00%
Agriculture	1707.70	(34.23)	(1.97%)
Basic Industry	2383.89	212.05	9.76%
Cosumer Goods	985.97	(21.63)	(2.15%)
Finance	1151.14	52.93	4.82%
Infrastructure	834.99	49.70	6.33%
Mining	411.58	0.30	0.07%
Miscellaneous	690.30	7.13	1.04%
Manufacture	829.15	35.69	4.50%
Property	1288.31	87.98	7.33%
Trade and Service	473.48	1.63	0.35%

Source: Bloomberg

Technical Analyst:

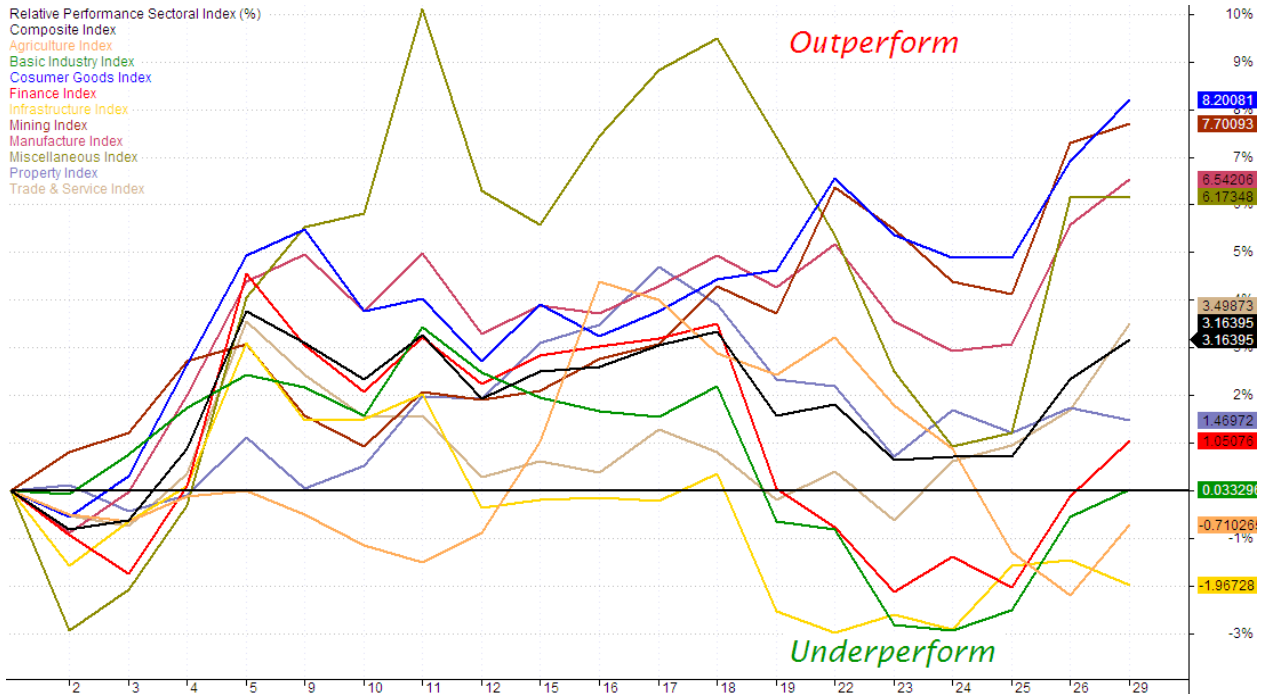
Lanjar Nafi

lanjar@reliance-securities.com

021-57905455 ext. 214

your **reliable** partner | 1

RELATIVE PERFORMANCE SECTORAL INDEX



Comment:

Upside potentially:

Agriculture Index declined to under-perform last month. First week in The March, The index has reversal performance from under-perform at -2%.

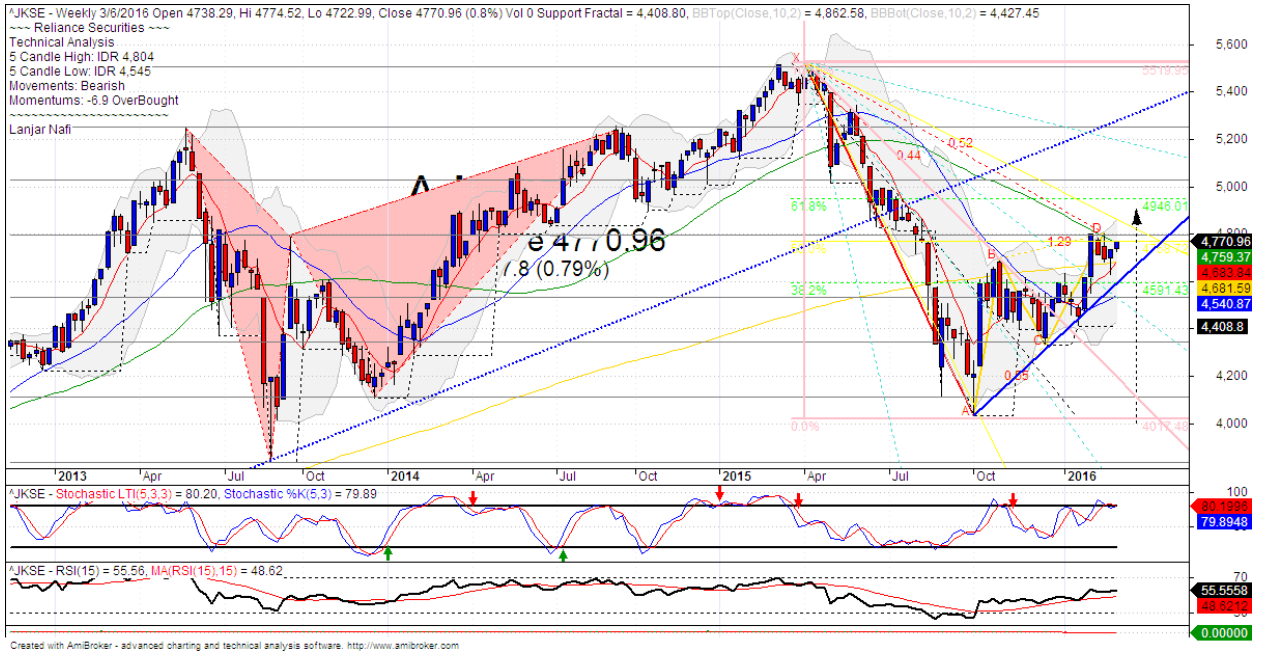
Basic Industry Index moved at under-perform last month. The index has moved positive trend performance.

Downside potentially:

Consumer Index surged significantly last month. At this week the index reached the most out-relative perform.

Miscellaneous Index surged significantly last month after from under-perform state. The index has negative indications at the first week with reversal movement from out-perform state.

IHSG Weekly Charts



S1	4535	R1	4800
S2	4345	R2	5030
S3	4110	R3	5250

Comment:

IHSG survive above MA200 last month. The index still trying to breaks MA50 resistance level. Trading range 4545-4804.

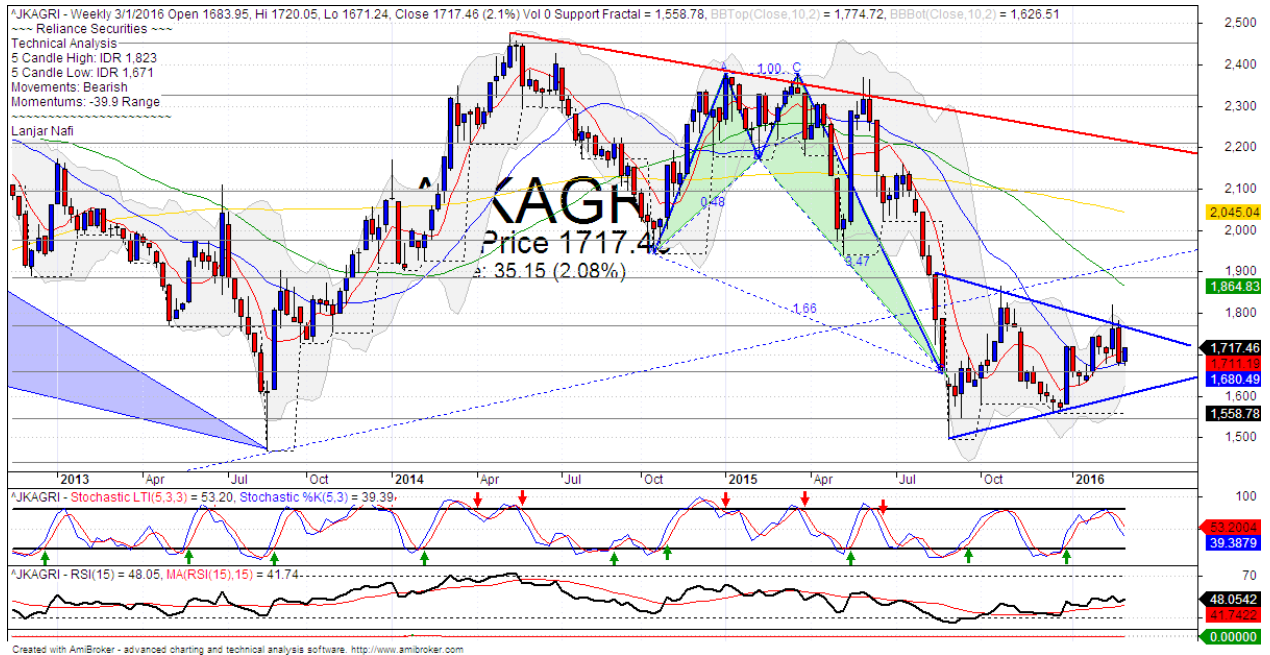
By the first march 2016, The Index reached and broke out MA50 resistance level and probability upward to 61.8% Fibonacci ratio at 4950.

Stochastic, consolidating at overbought state. Limited bullish potential. Relative Strength Index Indicator consolidations momentum from middle oscillator.

This month stop-loss level 4650 (Break out MA200 support level). If break out support level the Index will potentially continue to 4540 (MA25 support level).

This month resistance level 4800, if the index has broke out resistance level, it will continue to move upward to 4950 (Fibonacci target level).

Agriculture Index Weekly Charts



S1	1660	R1	1770
S2	1545	R2	1885
S3	1440	R3	1975

Comment:

The Agriculture Index consolidated last month at upper bands resistance level. Trading range at 1671-1823.

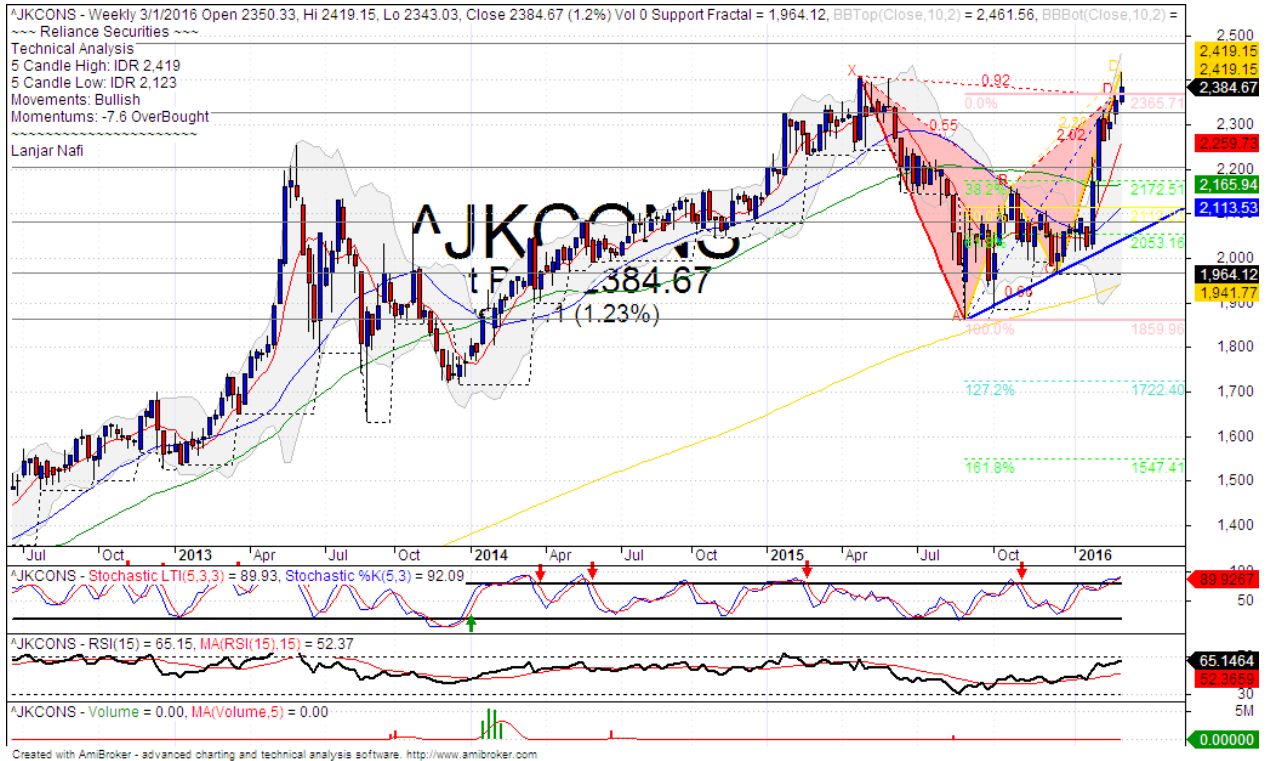
By the first week in March 2016, The index has rebound at MA25 support level. The index also have wedge chart pattern with bound of resistance at 1770.

Stochastic and RSI has bearish movement at middle oscillator.

Long term bearish and medium term bullish movement.

This month resistance level 1770, if the index has breaks out wedge bound of resistance, The index can be surge until 1865 (MA50 target).

Consumer Weekly Charts



Created with AmiBroker - advanced charting and technical analysis software. <http://www.amibroker.com>

S1	2325	R1	2480
S2	2200	R2	2635
S3	2080	R3	2800

Comment:

The Consumer index surged significant broke out resistance level. Trading range at 2123-2419.

By the first week of March 2016, The Index has forming a bearish gartley harmonic pattern with negative signal. Correction target from this formations at 2170 (68.2% Fibonacci ratios).

Stochastic dead-cross indications at overbought state, broad downside potential. RSI limited bullish momentum at overbought oscillator.

Medium term bullish movement.

This month stop loss level is around 2320. If the index breaks through this support level, it will continue to 2170 (Corrections target of bearish gartley level).

HEAD OFFICE

Reliance Building

Jl. Pluit Kencana No. 15A,
Pluit Penjaringan
Jakarta 14450
T +62 21 661 7768
F +62 21 661 9884

RESEARCH DIVISION

Jasa Adhi Mulya
jasamulya@reliance-securities.com
Robertus Yanuar Hardy
robertus@reliance-securities.com
Aji Setiawan
aji@reliance-securities.com
Alan Milgerry
alan@reliance-securities.com
Shanti Dwi Jayanti
santi@reliance-securities.com
Lanjar Nafi Taulat I
lanjar@reliance-securities.com

Senior Analyst
Senior Analyst
Associate Analyst
Associate Analyst
Associate Analyst
Technical Analyst

BRANCE OFFICE

Jakarta- Pluit

Jl. Pluit Kencana No. 15A
Pluit Penjaringan
Jakarta 14450
T +62 21 661 7768
F +62 21 661 9884

Bandung

Jl.Cisangkuy No.58
Bandung 40115
T +62 22 721 8200
F +62 22 721 9255

Surabaya - Gubeng

Jl. Bangka No. 22
Surabaya 60281
T +62 31 501 1128
F +62 31 503 3196

Makassar

Jl. Boto Lempangan No. 34 J
Makassar 90113
T +62 411 3632388
F +62 411 3614634

Jakarta - Sudirman

Menara Batavia 27th floor
Jl. KH. Mas Mansyur Kav 126
Jakarta 10220
T +62 21 5790 5455
F +62 21 5795 0728

Tasikmalaya

Ruko Tasik Indah Plaza No.21
Jl. KHZ Mustofa No. 345
Tasikmalaya 46121
T +62 265 345000
F +62 265 345003

Surabaya - Diponegoro

Jl. Diponegoro 26 D
Surabaya 60264
T +62 31 567 0388
F +62 31 561 0528

Pekanbaru

Jl. Sumatera No. 9, Simpang
Empat, Pekanbaru - Riau
28000
T +62 761 7894368
F +62 761 7894370

Jakarta - Kebon Jeruk

Plaza Kebon Jeruk
Jl.Raya Perjuangan Blok A/2
Jakarta 11530
T +62 21 532 4074
F +62 21 536 2157

Surakarta

Jl. Slamet Riyadi 330A
Solo 57145
T +62 271 736599
F +62 271 733478

Bali - Denpasar

Dewata Square Blok A3
Jl. Letda Tantular Renon
Denpasar 802361
T +62 361 225099
F +62 361 245099

Medan

Jl. Teuku Amir Hamzah No.26
T +62 61 6638592
F +62 61 6638023

BSD

Jl. Pahlawan Seribu Ruko BSD
Sektor 7 Blok RK kav. 9
Tangerang 15310
T +62 21 5387495
F +62 21 5387494

Malang

Jl. Guntur No. 19
Malang 65112
T +62 341 347 611
F +62 341 347 615

Pontianak

Jl. MT Haryono No. 6
Pontianak 78121
T +62 561 575674
F +62 561 575670

Balikpapan

Ruko Bukit Damai Indah
Blok I, No. 3, Rt.34
Jl. MT. Haryono, Gunung
Bahagia, Balikpapan Selatan
76114
T +62 542 746313-16
F +62 542 746317

Jakarta - Centro

Ruko Centro Residence Kav. 4-5
Tower C Lt. 1 No. 26-29
Jl. Macan, Daan Mogot
Jakarta 14450
T +62 21 56945227
F +62 21 56945226

IDX CORNER & INVESTMENT GALLERY

President University

Resto Plaza 1F - Jababeka
Education Park
Jl. Ki Hajar Dewantara Raya
Cikarang - Bekasi 17550
T +62 21 89106030

Universitas Siliwangi Tasikmalaya

Jl. Siliwangi No. 24
Tasikmalaya 46151
T +62 265 323685
F +62 265 323534

Universitas Muhammadiyah Sidoarjo

Jl. Majapahit 866B
Sidoarjo, Jawa Timur
T +62 31 8945444
F +62 31 8949333

Universitas Tanjungpura Pontianak

Jl. Jendral Ahmad Yani
Pontianak 78124
T +62 561 743465
F +62 561 766840

Universitas Islam Kalimantan FE UNISKA

Jl. Adiyaksa No. 2, Kayu Tangi
Banjarmasin
Tlp. 0511 3303871
Fax. 0511 3303871

STIE Tri Bhakti

Jl. Teuku Umar No. 24
Cut Meutia, Bekasi
Tlp. 021 82429400
Fax. 021 82429500

STIE "AUB" Surakarta

Jl. Mr. Sartono 97, Cengklik
Nusukan, Surakarta 57135
T +62 271 854803
F +62 271 853084

Universitas Surabaya

Jl. Raya Kalirungkut
Surabaya 60293
T +62 31 298 1203
F +62 31 298 1204

Universitas Muhammadiyah Gresik

Jl. Sumatra 101 GKB
Gresik 61121
T +62 31 395 1414
F +62 31 395 2585

Universitas Negeri Malang

Jl. Surabaya No. 6
Malang 65145
T +62 341 585914
F +62 341 552888

Universitas Muhammadiyah Malang

Jl. Raya Tlogomas 246
Malang 65144
T +62 341 464318-9
F +62 341 460782

STIE AAS Surakarta

Jalan Slamet Riyadi No 361
Kartasura, Surakarta
Telp. (0271) 726156
Faks. (0271) 726156

STIE Malangkucecwara

Jl. Terusan Candi Kalasan
Malang 65142
T +62 341 491813
F +62 341 495619

Universitas Jember

Jl. Jawa No. 17
Jember 68121
T +62 331 330732
F +62 331 326419

STIESIA Surabaya

Jl. Menur Pumpungan 30
Surabaya
T +62 31 5947505
F +62 31 5932218

Universitas 17 Agustus 1945

Banyuwangi
Jl. Adi Sucipto 26
Banyuwangi, Jawa Timur
T +62 333 419613
F +62 333 419163

Universitas Pesantren Tinggi Darul Ulum

Kompleks PP Darul Ulu,
Peterongan
Jombang, Jawa Timur
60281
Telp. (0321) 873655
Faks. (0321) 875771

Politeknik Kediri

Jl. Mayor Bismo No. 27
Kediri 64121
T +62 354 683128
F +62 354 683128

Sekolah Tinggi Manajemen Informatika dan Teknik Komputer Bali

Jalan Puputan No. 86, Renon,
Denpasar
Telp. +62361 244445
Faks. +62361 264773

Universitas Muhammadiyah Pontianak

Fakultas Ekonomi UM
Pontianak
Jl. Ahmad Yani, No. 111,
Pontianak 78124
Telp. +62561 743465
Faks. +62561 766840

Universitas Negeri Makassar

Fakultas Ekonomi Gedung BT
Lt.2
Jl. A.P. Pettarani, Kampus
UNM, Gunungsari Baru
Makassar 90222
T +62 411 889464 / 881244
F +62 411 887604

Disclaimer:

Information, opinions and recommendations contained in this document are presented by PT Reliance Securities Tbk. from sources that are considered reliable and dependable. This document is not an offer, invitation or any kind of representations to decide to buy or sell stock. Investment decisions taken based on this document is not the responsibility of PT Reliance Securities Tbk. PT Reliance Securities Tbk. reserves the right to change the contents of this document at any time without prior notice.