

Monthly IHSG



4,845.37
74.42
1.56%

Monthly LS-27



224.29
8.30
3.84%

International	Close	MoM Chg	(%)
DJIA	17,685.09	1168.59	7.08%
Nasdaq	4,869.85	311.90	6.84%
S&P 500	2,059.74	127.51	6.60%
FTSE 100	6,174.90	77.81	1.28%
Nikkei 225	16,758.67	732.91	4.57%
Hang Seng	20,776.70	1664.77	8.71%
STI	2,840.90	179.28	6.74%

Exchange Rates	Last	MoM Chg	(%)
USD / IDR	13239	(122.00)	(0.91%)
EUR / USD	1.1380	0.05	4.58%
USD / JPY	112.57	0.19	0.17%
GBP / USD	1.4360	0.04	3.03%
USD / CNY	6.454	(0.09)	(1.34%)
AUD / USD	0.7675	0.06	7.90%

Others	Last	MoM Chg	(%)
S&P 500 Vltv (VIX)	13.56	(6.99)	(34.01%)
EIDO: US	23.35	0.66	2.91%

Sector	Last	MoM Chg	(%)
Composite	4845.37	230.21	4.99%
Agriculture	1917.59	209.89	12.29%
Basic Industry	2289.72	(94.17)	(3.95%)
Consumer Goods	1021.42	35.45	3.60%
Finance	1225.36	74.22	6.45%
Infrastructure	895.77	60.78	7.28%
Mining	423.35	11.77	2.86%
Miscellaneous	704.37	14.07	2.04%
Manufacture	845.97	16.82	2.03%
Property	1273.64	(14.67)	(1.14%)
Trade and Service	491.17	17.69	3.74%

Source: Bloomberg

Technical Analyst:

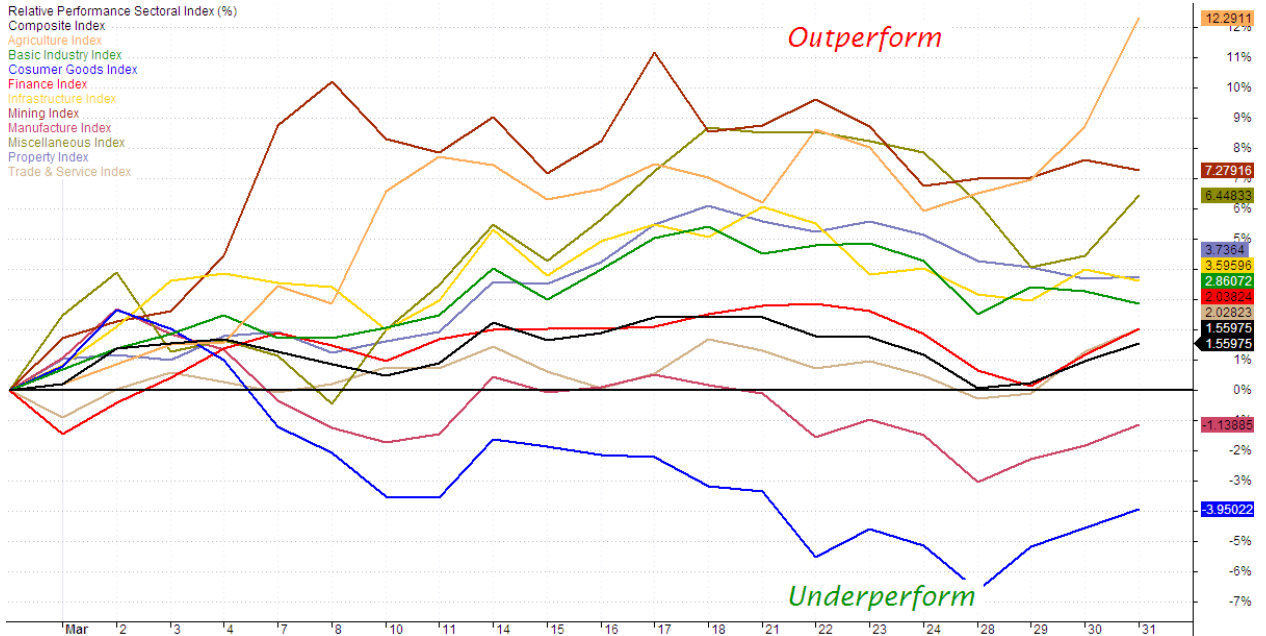
Lanjar Nafi

lanjar@reliance-securities.com

021-57905455 ext. 214

your **reliable** partner / 1

RELATIVE PERFORMANCE SECTORAL INDEX



Comment:

Upside potentially:

Consumer Index declined to under-perform last month. First week in The April, The index has reversal performance from under-perform at -3.9%.

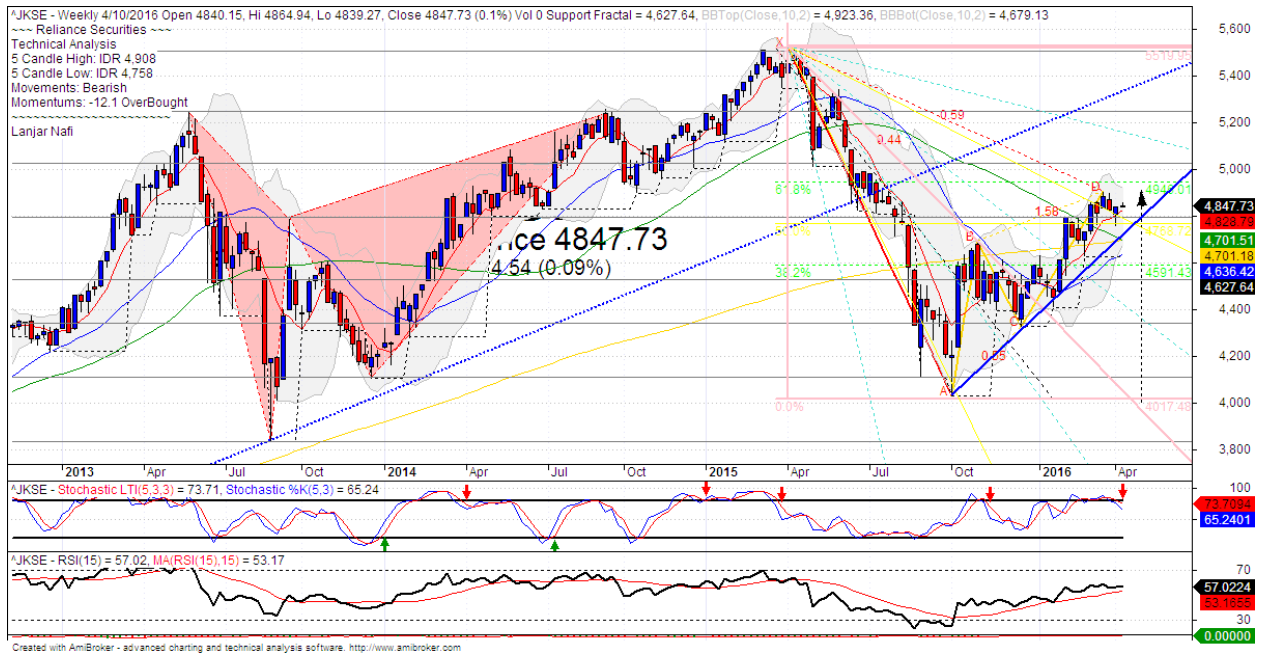
Finance Index moved sideways at under-perform last month. The index has moved positive trend performance.

Downside potentially:

Agriculture Index surged significantly last month. At this week the index reached the most out-relative perform.

Mining Index surged significantly last month after from under-perform state. The index has negative indications at the first week with reversal movement from out-perform state.

IHSG Weekly Charts



S1	4800	R1	5030
S2	4535	R2	5250
S3	4345	R3	5500

Comment:

IHSG survive above MA7 last month. The index still trying to reach 61.8% of wave target level. Trading range 4758-4908.

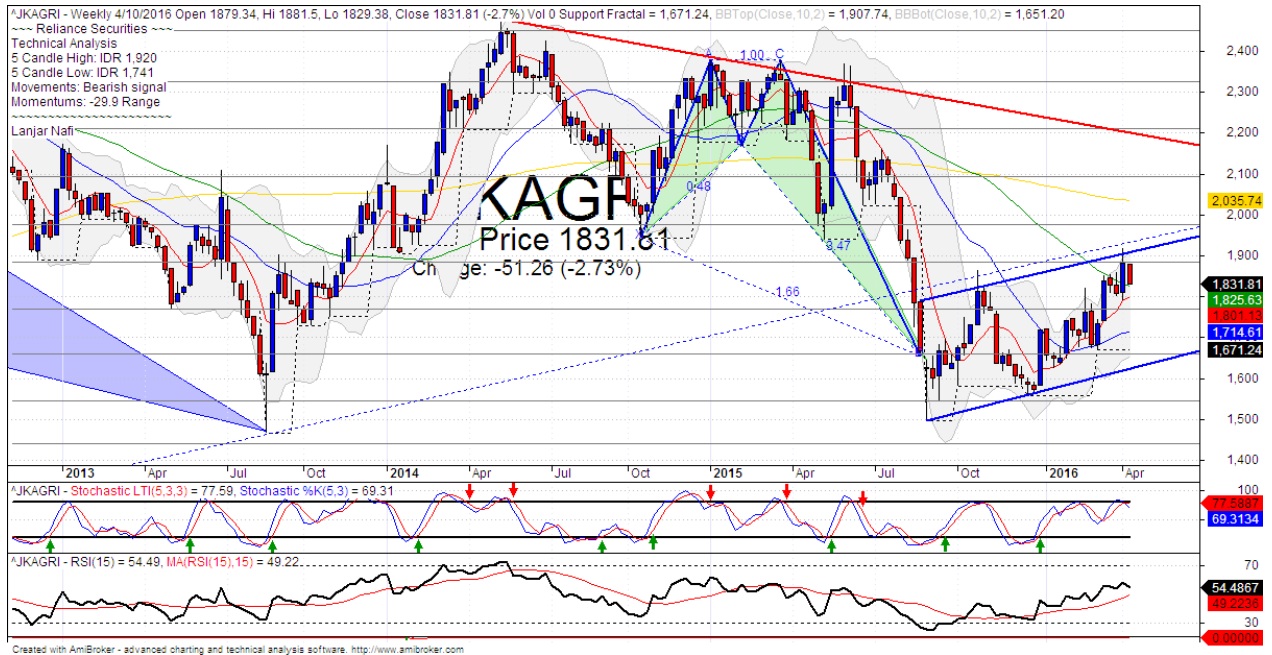
By the first April 2016, The Index rebounded at MA7 support level and probability upward to 61.8% Fibonacci ratio at 4950.

Stochastic, consolidating at overbought state. Limited bullish potential. Relative Strength Index Indicator consolidations momentum from middle oscillator.

This month stop-loss level 4650 (Break out MA200 support level). If break out support level the Index will potentially continue to 4540 (MA25 support level).

This month resistance level 4900, if the index has broke out resistance level, it will continue to move upward to 4950 (Fibonacci target level).

Agriculture Index Weekly Charts



S1	1770	R1	1885
S2	1660	R2	1975
S3	1545	R3	2100

Comment:

The Agriculture Index surged significant last month. Trading range at 1741-1920.

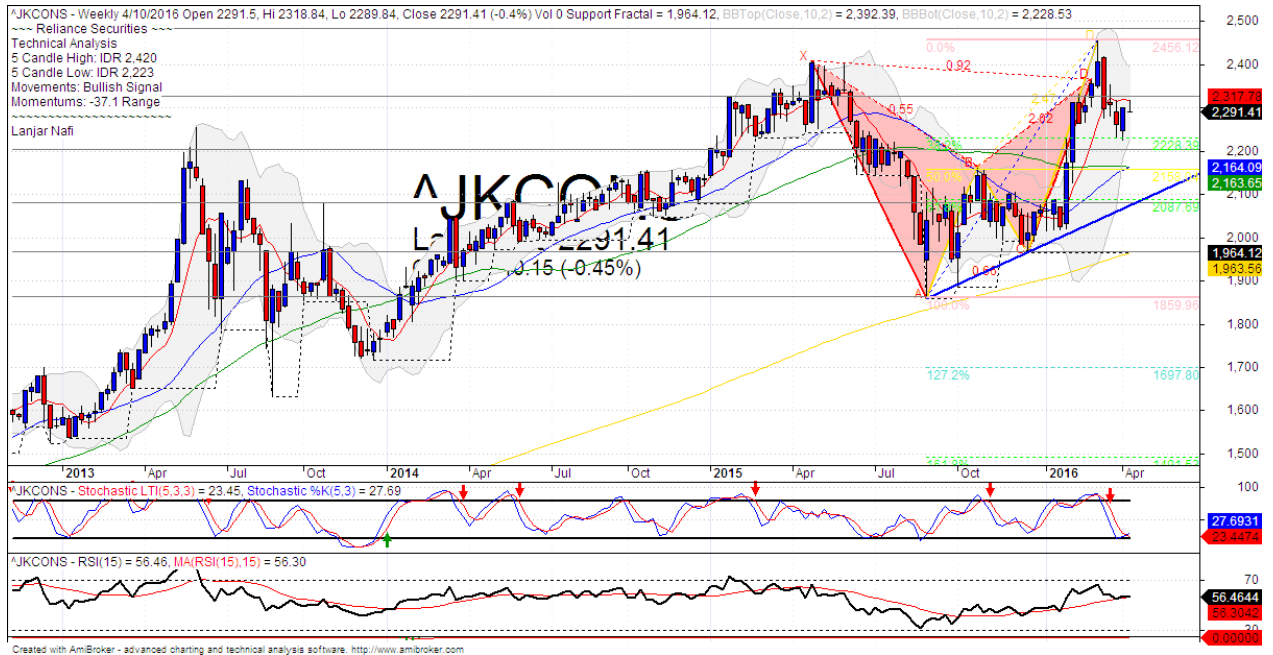
By the first week in April 2016, The index has bearish harami candlestick pattern after pulled back channeling bullish trend and false break MA50 resistance level indications.

Stochastic, dead-cross at overbought state and RSI has bearish movement at near overbought oscillator.

Long term bearish and medium term bullish movement.

This month resistance level 1885, if the index has breaks out wedge bound of resistance, The index can be surge until 2035 (MA200 target). Stop-loss level at below MA50 at 1820. Corrections potential until 1670 (Bullish trend support level).

Consumer Weekly Charts



S1	2200	R1	2325
S2	2080	R2	2480
S3	1965	R3	2635

Comment:

The Consumer index declined significant after forming bearish butterfly harmonic pattern. Trading range at 2223-2420.

By the first week of April 2016, The Index has arrived at corrections target from bearish butterfly harmonic pattern and confirmations a bullish engulfing candlestick pattern.

Stochastic golden-cross at oversold state, broad upside potential. RSI consolidations bullish momentum at near overbought oscillator.

Medium term bullish movement.

This month stop loss level is around 2220. If the index breaks through this support level, it will continue to 2100 (bullish trend support level). Upside target at 2450.

HEAD OFFICE

Reliance Building

Jl. Pluit Kencana No. 15A,
Pluit Penjaringan
Jakarta 14450
T +62 21 661 7768
F +62 21 661 9884

RESEARCH DIVISION

Jasa Adhi Mulya
jasamulya@reliance-securities.com
Robertus Yanuar Hardy
robertus@reliance-securities.com
Aji Setiawan
aji@reliance-securities.com
Alan Milgerry
alan@reliance-securities.com
Shanti Dwi Jayanti
santi@reliance-securities.com
Lanjar Nafi Taulat I
lanjar@reliance-securities.com

Senior Analyst

Senior Analyst

Associate Analyst

Associate Analyst

Associate Analyst

Technical Analyst

BRANCE OFFICE

Jakarta- Pluit

Jl. Pluit Kencana No. 15A
Pluit Penjaringan
Jakarta 14450
T +62 21 661 7768
F +62 21 661 9884

Bandung

Jl.Cisangkuy No.58
Bandung 40115
T +62 22 721 8200
F +62 22 721 9255

Surabaya - Gubeng

Jl. Bangka No. 22
Surabaya 60281
T +62 31 501 1128
F +62 31 503 3196

Makassar

Jl. Boto Lempangan No. 34 J
Makassar 90113
T +62 411 3632388
F +62 411 3614634

Jakarta - Sudirman

Menara Batavia 27th floor
Jl. KH. Mas Mansyur Kav 126
Jakarta 10220
T +62 21 5790 5455
F +62 21 5795 0728

Tasikmalaya

Ruko Tasik Indah Plaza No.21
Jl. KHZ Mustofa No. 345
Tasikmalaya 46121
T +62 265 345000
F +62 265 345003

Surabaya - Diponegoro

Jl. Diponegoro 26 D
Surabaya 60264
T +62 31 567 0388
F +62 31 561 0528

Pekanbaru

Jl. Sumatera No. 9, Simpang
Empat, Pekanbaru - Riau
28000
T +62 761 7894368
F +62 761 7894370

Jakarta - Kebon Jeruk

Plaza Kebon Jeruk
Jl.Raya Perjuangan Blok A/2
Jakarta 11530
T +62 21 532 4074
F +62 21 536 2157

Surakarta

Jl. Slamet Riyadi 330A
Solo 57145
T +62 271 736599
F +62 271 733478

Bali - Denpasar

Dewata Square Blok A3
Jl. Letda Tantular Renon
Denpasar 802361
T +62 361 225099
F +62 361 245099

Medan

Jl. Teuku Amir Hamzah No.26
T +62 61 6638592
F +62 61 6638023

BSD

Jl. Pahlawan Seribu Ruko BSD
Sektor 7 Blok RK kav. 9
Tangerang 15310
T +62 21 5387495
F +62 21 5387494

Malang

Jl. Guntur No. 19
Malang 65112
T +62 341 347 611
F +62 341 347 615

Pontianak

Jl. MT Haryono No. 6
Pontianak 78121
T +62 561 575674
F +62 561 575670

Balikpapan

Ruko Bukit Damai Indah
Blok I, No. 3, Rt.34
Jl. MT. Haryono, Gunung
Bahagia, Balikpapan Selatan
76114
T +62 542 746313-16
F +62 542 746317

Jakarta - Centro

Ruko Centro Residence Kav. 4-5
Tower C Lt. 1 No. 26-29
Jl. Macan, Daan Mogot
Jakarta 14450
T +62 21 56945227
F +62 21 56945226

IDX CORNER & INVESTMENT GALLERY

President University
Resto Plaza 1F - Jababeka
Education Park
Jl. Ki Hajar Dewantara Raya
Cikarang - Bekasi 17550
T +62 21 89106030

Universitas Siliwangi
Tasikmalaya
Jl. Siliwangi No. 24
Tasikmalaya 46151
T +62 265 323685
F +62 265 323534

Universitas Muhammadiyah
Sidoarjo
Jl. Majapahit 866B
Sidoarjo, Jawa Timur
T +62 31 8945444
F +62 31 8949333

Universitas Tanjungpura
Pontianak
Jl. Jendral Ahmad Yani
Pontianak 78124
T +62 561 743465
F +62 561 766840

Universitas Islam Kalimantan
FE UNISKA
Jl. Adiyaksa No. 2, Kayu Tangi
Banjarmasin
Tlp. 0511 3303871
Fax. 0511 3303871

STIE Tri Bhakti
Jl. Teuku Umar No. 24
Cut Meutia, Bekasi
Tlp. 021 82429400
Fax. 021 82429500

STIE "AUB" Surakarta
Jl. Mr. Sartono 97, Cengklik
Nusukan, Surakarta 57135
T +62 271 854803
F +62 271 853084

Universitas Surabaya
Jl. Raya Kalirungkt
Surabaya 60293
T +62 31 298 1203
F +62 31 298 1204

Universitas Muhammadiyah
Gresik
Jl. Sumatra 101 GKB
Gresik 61121
T +62 31 395 1414
F +62 31 395 2585

Universitas Negeri Malang
Jl. Surabaya No. 6
Malang 65145
T +62 341 585914
F +62 341 552888

Universitas Muhammadiyah
Malang
Jl. Raya Tlogomas 246
Malang 65144
T +62 341 464318-9
F +62 341 460782

STIE AAS Surakarta
Jalan Slamet Riyadi No 361
Kartasura, Surakarta
Telp. (0271) 726156
Faks. (0271) 726156

STIE Malangkececwara
Jl. Terusan Candi Kalasan
Malang 65142
T +62 341 491813
F +62 341 495619

Universitas Jember
Jl. Jawa No. 17
Jember 68121
T +62 331 330732
F +62 331 326419

STIESIA Surabaya
Jl. Menur Pumpungan 30
Surabaya
T +62 31 5947505
F +62 31 5932218

Universitas 17 Agustus
1945
Banyuwangi
Jl. Adi Sucipto 26
Banyuwangi, Jawa Timur
T +62 333 419613
F +62 333 419163

Universitas Pesantren
Tinggi Darul Ulum
Kompleks PP Darul Ulu,
Peterongan
Jombang, Jawa Timur
60281
Telp. (0321) 873655
Faks. (0321) 875771

Politeknik Kediri
Jl. Mayor Bismo No. 27
Kediri 64121
T +62 354 683128
F +62 354 683128

Sekolah Tinggi Manajemen
Informatika dan Teknik
Komputer Bali
Jalan Puputan No. 86, Renon,
Denpasar
Telp. +62361 244445
Faks. +62361 264773

Universitas Muhammadiyah
Pontianak
Fakultas Ekonomi UM
Pontianak
Jl. Ahmad Yani, No. 111,
Pontianak 78124
Telp. +62561 743465
Faks. +62561 766840

Universitas Negeri
Makassar
Fakultas Ekonomi Gedung BT
Lt.2
Jl. A.P. Pettarani, Kampus
UNM, Gunungsari Baru
Makassar 90222
T +62 411 889464 / 881244
F +62 411 887604

Disclaimer:

Information, opinions and recommendations contained in this document are presented by PT Reliance Securities Tbk. from sources that are considered reliable and dependable. This document is not an offer, invitation or any kind of representations to decide to buy or sell stock. Investment decisions taken based on this document is not the responsibility of PT Reliance Securities Tbk. PT Reliance Securities Tbk. reserves the right to change the contents of this document at any time without prior notice.