

Monthly IHSG



4,796.87
-41.72
-0.86%

Monthly LQ-45



820.01
-12.50
-1.50%

International	Close	MoM Chg	(%)
DJIA	17,787.20	13.56	0.08%
Nasdaq	4,948.06	172.70	3.62%
S&P 500	2,096.96	31.66	1.53%
FTSE 100	6,230.79	(11.10)	(0.18%)
Nikkei 225	17,234.98	1189.90	7.42%
Hang Seng	20,815.09	(251.96)	(1.20%)
STI	2,791.06	(30.47)	(1.08%)

Exchange Rates	Last	MoM Chg	(%)
USD / IDR	13648	475.50	3.61%
EUR / USD	1.1132	(0.04)	(3.20%)
USD / JPY	110.73	4.26	4.00%
GBP / USD	1.4483	(0.01)	(0.80%)
USD / CNY	6.591	0.11	1.71%
AUD / USD	0.7284	(0.03)	(4.16%)

Others	Last	MoM Chg	(%)
S&P 500 Vltv (VIX)	13.12	(2.10)	(13.80%)
EIDO: US	22.45	(0.64)	(2.77%)

Sector	Last	MoM Chg	(%)
Composite	4796.87	(41.72)	(0.86%)
Agriculture	1723.85	(40.89)	(2.32%)
Basic Industry	2317.49	(21.82)	(0.93%)
Cosumer Goods	1071.69	(2.86)	(0.27%)
Finance	1128.14	(13.00)	(1.14%)
Infrastructure	960.93	(4.95)	(0.51%)
Mining	406.36	(2.31)	(0.56%)
Miscellaneous	670.56	4.63	0.70%
Manufacture	832.21	(3.48)	(0.42%)
Property	1257.11	(11.58)	(0.91%)
Trade and Service	505.12	(2.19)	(0.43%)

Source: Bloomberg

Technical Analyst:

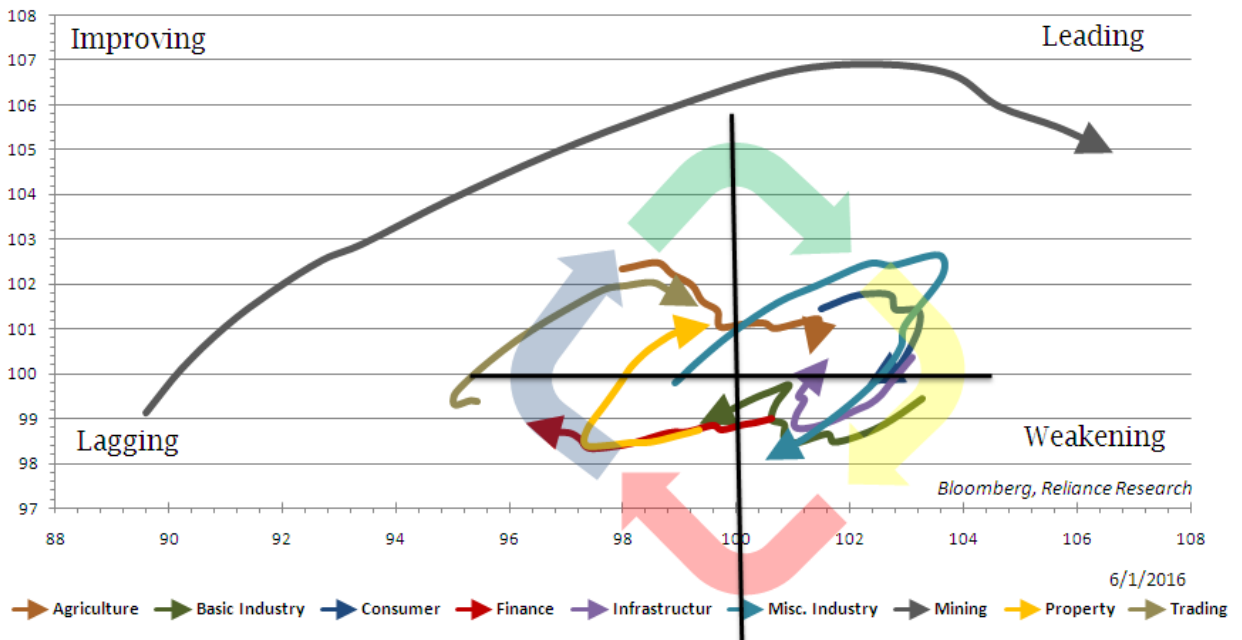
Lanjar Nafi

lanjar@reliance-securities.com

021-57905455 ext. 214

your **reliable** partner / 1

Relative Rotations Graph All Sector Index (15 weeks)



Comment:

Upside potentially:

Property Index successes move to improving area. That signal is a bullish momentum to Leading area.

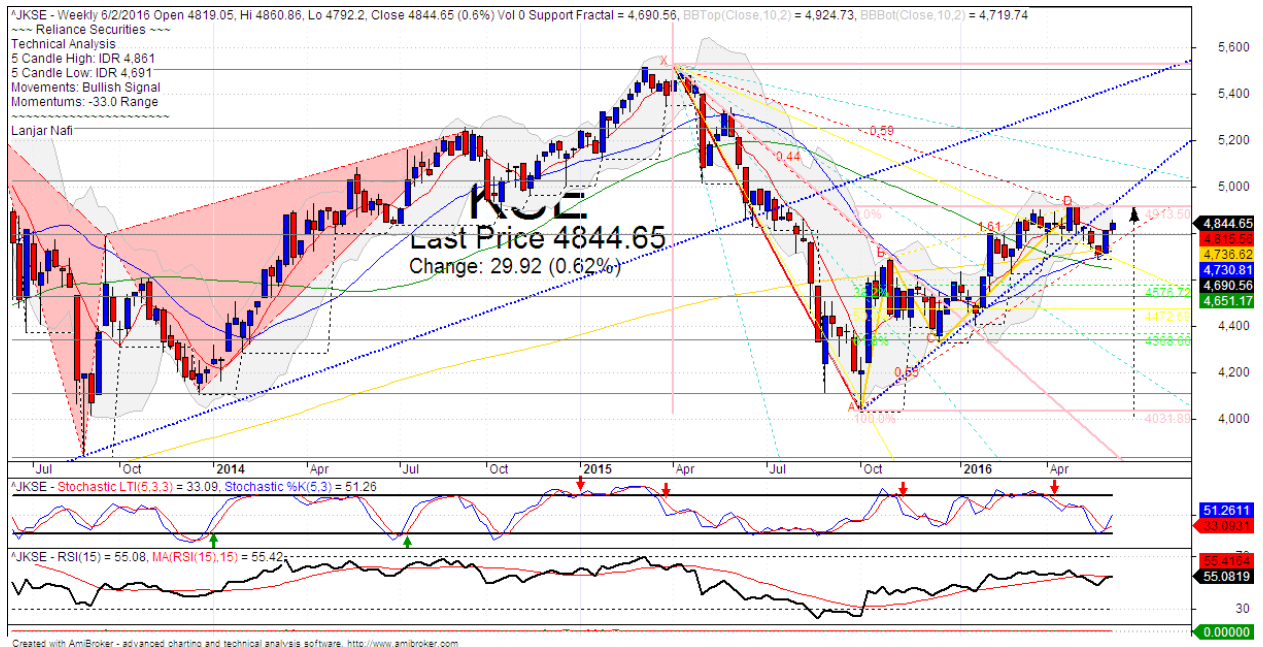
Trading Index moved to leading from Improving last month.

Downside potentially:

Consumer index has leading downward movement to weakening with decreasing momentum until under the 100 level. It's a negative signal for this sector.

Agriculture Index to having bearish momentum after arriving at the Leading state. And The first day on this month the index having negative signal to weakening area.

IHSG Weekly Charts



S1	4800	R1	5030
S2	4535	R2	5250
S3	4345	R3	5500

Comment:

IHSG surged significant after rebounded at MA50 support level. Trading range at 4691-4861

By the first June 2016, The Index trying to reach the upper Bollinger bands and back to bullish trend line.

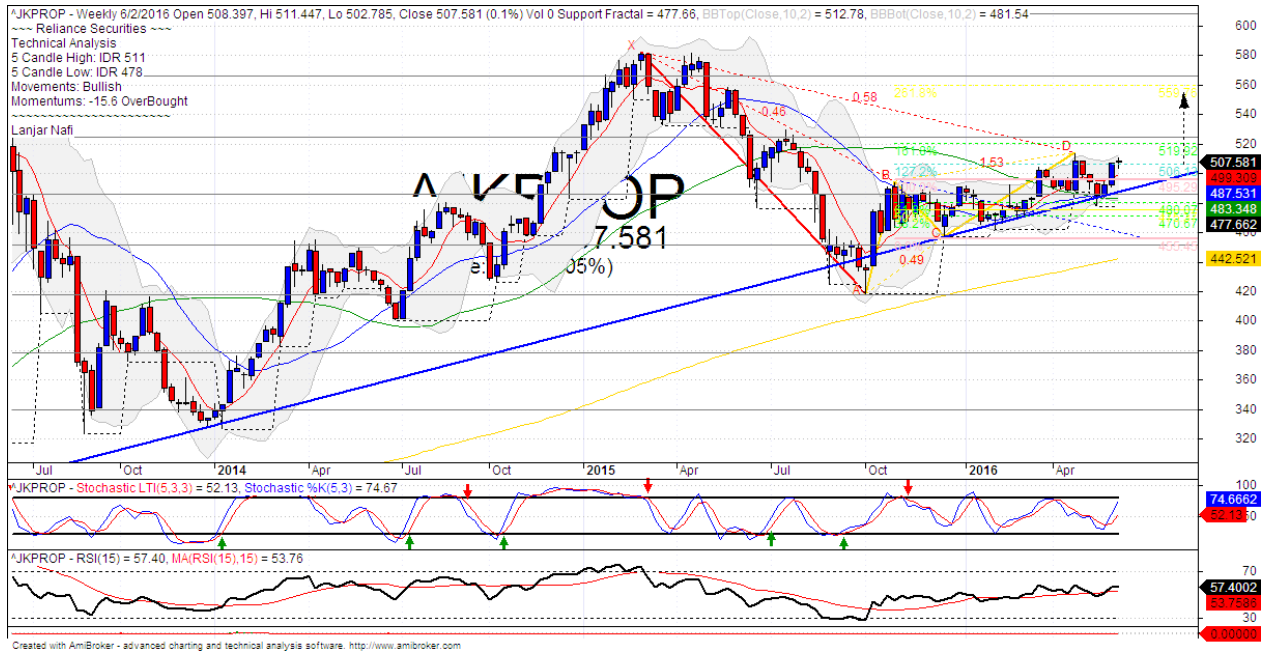
Stochastic indicator has golden-cross at oversold last week. Potentially positive movement to overbought oscillator.

RSI indicator still trying to break the MA15 of momentum as resistance level at middle oscillator.

This month stop-loss level 4700 (Break out MA200 support level). If break out support level the Index will potentially continue to 4670 (MA50 support level).

This month resistance level 4900, if the index has breaks out resistance level, it will continue to move upward to 4950 (Fibonacci target level).

Property Index Weekly Charts



S1	485	R1	525
S2	450	R2	565
S3	420	R3	610

Comment:

The Property Index rebounded at bullish trend line and MA50 support level. Trading range at 478-511.

By the first week in June 2016, The index trying to reach the resistance level at 520 and also potentially forming the gartley formations with wave target until 560.

Stochastic indicator has bullish movement from middle oscillator.

RSI indicator still consolidated at middle oscillator after break out the MA15 of momentum.

Long term bullish movement.

This month resistance level 520, Upside target until upper Bollinger bands at 560. Stop-loss level at below bearish trend line at 480. Corrections potential until 455.

HEAD OFFICE

Reliance Building
*Jl. Pluit Kencana No. 15A,
 Pluit Penjaringan
 Jakarta 14450
 T +62 21 661 7768
 F +62 21 661 9884*

RESEARCH DIVISION

Jasa Adhi Mulya
jasamulya@reliance-securities.com
Robertus Yanuar Hardy
robertus@reliance-securities.com
Aji Setiawan
aji@reliance-securities.com
Alan Milgerry
alan@reliance-securities.com
Shanti Dwi Jayanti
santi@reliance-securities.com
Lanjar Nafi Taulat I
lanjar@reliance-securities.com

Senior Analyst
Senior Analyst
Associate Analyst
Associate Analyst
Associate Analyst
Technical Analyst

BRANCE OFFICE

Jakarta- Pluit
*Jl. Pluit Kencana No. 15A
 Pluit Penjaringan
 Jakarta 14450
 T +62 21 661 7768
 F +62 21 661 9884*

Bandung
*Jl. Cisangkuy No.58
 Bandung 40115
 T +62 22 721 8200
 F +62 22 721 9255*

Surabaya - Gubeng
*Jl. Bangka No. 22
 Surabaya 60281
 T +62 31 501 1128
 F +62 31 503 3196*

Makassar
*Jl. Boto Lempangan No. 34 J
 Makassar 90113
 T +62 411 3632388
 F +62 411 3614634*

Jakarta - Sudirman
*Menara Batavia 27th floor
 Jl. KH. Mas Mansyur Kav 126
 Jakarta 10220
 T +62 21 5790 5455
 F +62 21 5795 0728*

Tasikmalaya
*Ruko Tasik Indah Plaza No.21
 Jl. KHZ Mustofa No. 345
 Tasikmalaya 46121
 T +62 265 345000
 F +62 265 345003*

Surabaya - Diponegoro
*Jl. Diponegoro 26 D
 Surabaya 60264
 T +62 31 567 0388
 F +62 31 561 0528*

Pekanbaru
*Jl. Sumatera No. 9, Simpang
 Empat, Pekanbaru - Riau
 28000
 T +62 761 7894368
 F +62 761 7894370*

Jakarta - Kebon Jeruk
*Plaza Kebon Jeruk
 Jl. Raya Perjuangan Blok A/2
 Jakarta 11530
 T +62 21 532 4074
 F +62 21 536 2157*

Surakarta
*Jl. Slamet Riyadi 330A
 Solo 57145
 T +62 271 736599
 F +62 271 733478*

Bali - Denpasar
*Dewata Square Blok A3
 Jl. Letda Tantular Renon
 Denpasar 802361
 T +62 361 225099
 F +62 361 245099*

Medan
*Jl. Teuku Amir Hamzah No.26
 T +62 61 6638592
 F +62 61 6638023*

BSD
*Jl. Pahlawan Seribu Ruko BSD
 Sektor 7 Blok RK kav. 9
 Tangerang 15310
 T +62 21 5387495
 F +62 21 5387494*

Malang
*Jl. Guntur No. 19
 Malang 65112
 T +62 341 347 611
 F +62 341 347 615*

Pontianak
*Jl. MT Haryono No. 6
 Pontianak 78121
 T +62 561 575674
 F +62 561 575670*

Balikpapan
*Ruko Bukit Damai Indah
 Blok I, No. 3, Rt.34
 Jl. MT. Haryono, Gunung
 Bahagia, Balikpapan Selatan
 76114
 T +62 542 746313-16
 F +62 542 746317*

Jakarta - Centro
*Ruko Centro Residence Kav. 4-5
 Tower C Lt. 1 No. 26-29
 Jl. Macan, Daan Mogot
 Jakarta 14450
 T +62 21 56945227
 F +62 21 56945226*

IDX CORNER & INVESTMENT GALLERY

President University

Resto Plaza 1F - Jababeka
Education Park
Jl. Ki Hajar Dewantara Raya
Cikarang - Bekasi 17550
T +62 21 89106030

Universitas Siliwangi Tasikmalaya

Jl. Siliwangi No. 24
Tasikmalaya 46151
T +62 265 323685
F +62 265 323534

Universitas Muhammadiyah Sidoarjo

Jl. Majapahit 866B
Sidoarjo, Jawa Timur
T +62 31 8945444
F +62 31 8949333

Universitas Tanjungpura Pontianak

Jl. Jendral Ahmad Yani
Pontianak 78124
T +62 561 743465
F +62 561 766840

Universitas Islam Kalimantan FE UNISKA

Jl. Adiyaksa No. 2, Kayu Tangi
Banjarmasin
Tlp. 0511 3303871
Fax. 0511 3303871

STIE Tri Bhakti

Jl. Teuku Umar No. 24
Cut Meutia, Bekasi
Tlp. 021 82429400
Fax. 021 82429500

STIE "AUB" Surakarta

Jl. Mr. Sartono 97, Cengklik
Nusukan, Surakarta 57135
T +62 271 854803
F +62 271 853084

Universitas Surabaya

Jl. Raya Kalirungkut
Surabaya 60293
T +62 31 298 1203
F +62 31 298 1204

Universitas Muhammadiyah Gresik

Jl. Sumatra 101 GKB
Gresik 61121
T +62 31 395 1414
F +62 31 395 2585

Universitas Negeri Malang

Jl. Surabaya No. 6
Malang 65145
T +62 341 585914
F +62 341 552888

Universitas Muhammadiyah Malang

Jl. Raya Tlogomas 246
Malang 65144
T +62 341 464318-9
F +62 341 460782

STIE AAS Surakarta

Jalan Slamet Riyadi No 361
Kartasura, Surakarta
Telp. (0271) 726156
Faks. (0271) 726156

STIE Malangkucecwara

Jl. Terusan Candi Kalasan
Malang 65142
T +62 341 491813
F +62 341 495619

Universitas Jember

Jl. Jawa No. 17
Jember 68121
T +62 331 330732
F +62 331 326419

STIESIA Surabaya

Jl. Menur Pungungan 30
Surabaya
T +62 31 5947505
F +62 31 5932218

Universitas 17 Agustus 1945

Banyuwangi
Jl. Adi Sucipto 26
Banyuwangi, Jawa Timur
T +62 333 419613
F +62 333 419163

Universitas Pesantren Tinggi Darul Ulum

Kompleks PP Darul Ulu,
Peterongan
Jombang, Jawa Timur
60281
Telp. (0321) 873655
Faks. (0321) 875771

Politeknik Kediri

Jl. Mayor Bismo No. 27
Kediri 64121
T +62 354 683128
F +62 354 683128

Sekolah Tinggi Manajemen Informatika dan Teknik Komputer Bali

Jalan Puputan No. 86, Renon,
Denpasar
Telp. +62361 244445
Faks. +62361 264773

Universitas Muhammadiyah Pontianak

Fakultas Ekonomi UM
Pontianak
Jl. Ahmad Yani, No. 111,
Pontianak 78124
Telp. +62561 743465
Faks. +62561 766840

Universitas Negeri Makassar

Fakultas Ekonomi Gedung BT
Lt.2
Jl. A.P. Pettarani, Kampus
UNM, Gunungsari Baru
Makassar 90222
T +62 411 889464 / 881244
F +62 411 887604

Disclaimer:

Information, opinions and recommendations contained in this document are presented by PT Reliance Securities Tbk. from sources that are considered reliable and dependable. This document is not an offer, invitation or any kind of representations to decide to buy or sell stock. Investment decisions taken based on this document is not the responsibility of PT Reliance Securities Tbk. PT Reliance Securities Tbk. reserves the right to change the contents of this document at any time without prior notice.