

Monthly IHSG



5,364.80
-21.28
-0.40%

Monthly LQ-45



922.20
-2.76
-0.30%

International	Close	MoM Chg	(%)
DJIA	18,308.15	(92.73)	(0.50%)
Nasdaq	5,312.00	98.78	1.89%
S&P 500	2,168.27	(2.68)	(0.12%)
FTSE 100	6,899.33	117.82	1.74%
Nikkei 225	16,641.12	(246.28)	(1.46%)
Hang Seng	23,595.69	618.81	2.69%
STI	3,253.30	363.50	12.58%

Exchange Rates	Last	MoM Chg	(%)
USD / IDR	12999	(96.00)	(0.73%)
EUR / USD	1.1200	(0.01)	(0.47%)
USD / JPY	101.25	(0.45)	(0.44%)
GBP / USD	1.2900	(0.05)	(3.40%)
USD / CNY	6.670	0.00	0.05%
AUD / USD	0.7700	0.00	0.21%

Others	Last	MoM Chg	(%)
S&P 500 Vltv (VIX)	13.29	1.35	11.31%
EIDO: US	27.00	0.81	3.09%

Sector	Last	MoM Chg	(%)
Composite	5364.80	(21.28)	(0.40%)
Agriculture	1793.36	(75.90)	(4.06%)
Basic Industry	512.81	6.13	1.21%
Cosumer Goods	2459.16	(36.70)	(1.47%)
Finance	803.85	6.70	0.84%
Infrastructure	1131.97	(2.16)	(0.19%)
Mining	1158.59	(5.05)	(0.43%)
Miscellaneous	1368.73	11.81	0.87%
Manufacture	1405.13	(8.20)	(0.58%)
Property	565.09	(1.93)	(0.34%)
Trade and Service	852.41	(17.62)	(2.02%)

Source: Bloomberg

Technical Analyst:

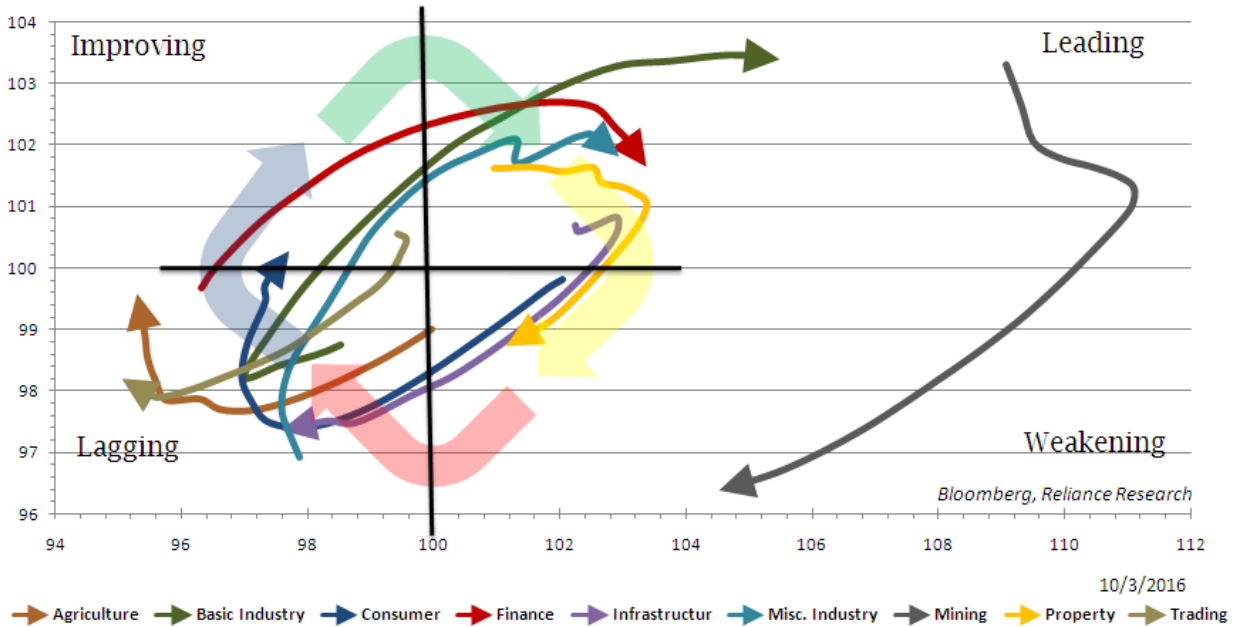
Lanjar Nafi

lanjar@reliance-securities.com

021-57905455 ext. 214

your **reliable** partner | 1

Relative Rotations Graph All Sector Index (15 weeks)



Comment:

Upside potentially:

Consumer index have relative rotations cross the line from lagging area to improving area. The index will be positive trend this month.

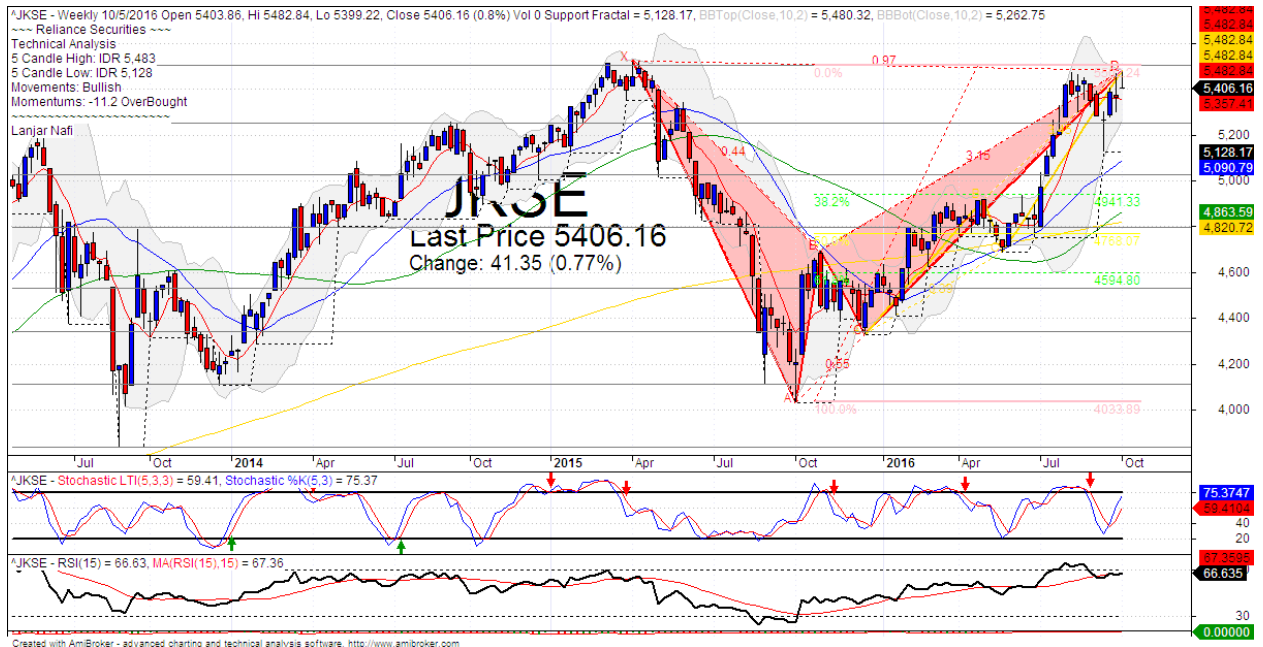
Agriculture Index still on the lagging area, but the index surged significant from 97 point. Trend of relative rotations has positive indications.

Downside potentially:

Finance index has leading area and downward movement to weakening with decreasing momentum. It's a negative signal for this sector.

Misc. Industry Index to having bearish momentum after arriving at the Leading state. And The first day on this month the index having negative signal to weakening area.

IHSG Weekly Charts



S1	5250	R1	5500
S2	5030	R2	5775
S3	4790	R3	6100

Comment:

IHSG surged significant after rebounded at fractal support level. Trading range at 5128-5483.

By the first October 2016, The Index has the bearish gartley formations if broke the MA7 support level. it's a negative signal.

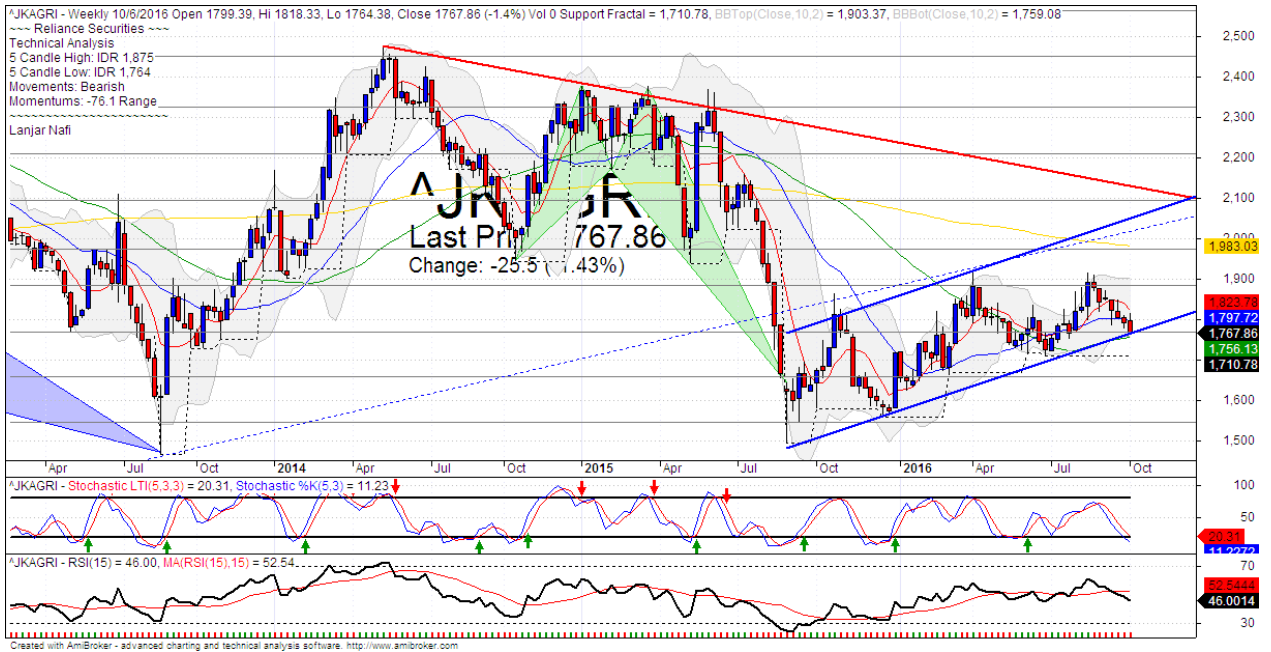
Stochastic indicator has bearish movement after dead-cross at overbought oscillator. Broad downside potential.

RSI indicator still consolidations momentum at overbought oscillator.

This month stop-loss level 5300 (Break out MA7 support level). If break out support level the Index will potentially continue to 4940 (first corrections target from bearish gartley support level).

This month resistance level 5500, if the index has breaks out resistance level, it will continue to move upward to 5600 (upper Bollinger bands resistance level).

Agriculture Index Weekly Charts



S1	1760	R1	1885
S2	1660	R2	1980
S3	1550	R3	2100

Comment:

The Agriculture Index declined last month after pulled back the upper Bollinger bands. Trading range 1754-1875.

By the first week in October 2016, The index trying to confirmations the rebound signal at bullish trend support level.

Stochastic indicator golden-cross indications at oversold oscillator. Broad upside potential.

RSI indicator still consolidated at middle oscillator and MA15 of support momentum.

Medium term bullish movement.

This month resistance level 1885, Upside target until 1980 (MA200 target level). Stop-loss level at below The support bearish trend line at 1720.

HEAD OFFICE

Reliance Building

Jl. Pluit Kencana No. 15A,
Pluit Penjaringan
Jakarta 14450
T +62 21 661 7768
F +62 21 661 9884

RESEARCH DIVISION

Jasa Adhi Mulya

jasamulya@reliance-securities.com

Robertus Yanuar Hardy

robertus@reliance-securities.com

Aji Setiawan

aji@reliance-securities.com

Alan Milgerry

alan@reliance-securities.com

Shanti Dwi Jayanti

santi@reliance-securities.com

Lanjar Nafi Taulat I

lanjar@reliance-securities.com

Senior Analyst

Senior Analyst

Associate Analyst

Associate Analyst

Associate Analyst

Technical Analyst

BRANCE OFFICE

Jakarta- Pluit

Jl. Pluit Kencana No. 15A
Pluit Penjaringan
Jakarta 14450
T +62 21 661 7768
F +62 21 661 9884

Bandung

Jl.Cisangkuy No.58
Bandung 40115
T +62 22 721 8200
F +62 22 721 9255

Surabaya - Gubeng

Jl. Bangka No. 22
Surabaya 60281
T +62 31 501 1128
F +62 31 503 3196

Makassar

Jl. Boto Lempangan No. 34 J
Makassar 90113
T +62 411 3632388
F +62 411 3614634

Jakarta - Sudirman

Menara Batavia 27th floor
Jl. KH. Mas Mansyur Kav 126
Jakarta 10220
T +62 21 5790 5455
F +62 21 5795 0728

Tasikmalaya

Ruko Tasik Indah Plaza No.21
Jl. KHZ Mustofa No. 345
Tasikmalaya 46121
T +62 265 345000
F +62 265 345003

Surabaya - Diponegoro

Jl. Diponegoro 26 D
Surabaya 60264
T +62 31 567 0388
F +62 31 561 0528

Pekanbaru

Jl. Sumatera No. 9, Simpang
Empat, Pekanbaru - Riau
28000
T +62 761 7894368
F +62 761 7894370

Jakarta - Kebon Jeruk

Plaza Kebon Jeruk
Jl.Raya Perjuangan Blok A/2
Jakarta 11530
T +62 21 532 4074
F +62 21 536 2157

Surakarta

Jl. Slamet Riyadi 330A
Solo 57145
T +62 271 736599
F +62 271 733478

Bali - Denpasar

Dewata Square Blok A3
Jl. Letda Tantular Renon
Denpasar 802361
T +62 361 225099
F +62 361 245099

Medan

Jl. Teuku Amir Hamzah No.26
T +62 61 6638592
F +62 61 6638023

BSD

Jl. Pahlawan Seribu Ruko BSD
Sektor 7 Blok RK kav. 9
Tangerang 15310
T +62 21 5387495
F +62 21 5387494

Malang

Jl. Guntur No. 19
Malang 65112
T +62 341 347 611
F +62 341 347 615

Pontianak

Jl. MT Haryono No. 6
Pontianak 78121
T +62 561 575674
F +62 561 575670

Balikpapan

Ruko Bukit Damai Indah
Blok I, No. 3, Rt.34
Jl. MT. Haryono, Gunung
Bahagia, Balikpapan Selatan
76114
T +62 542 746313-16
F +62 542 746317

Jakarta - Centro

Ruko Centro Residence Kav. 4-5
Tower C Lt. 1 No. 26-29
Jl. Macan, Daan Mogot
Jakarta 14450
T +62 21 56945227
F +62 21 56945226

IDX CORNER & INVESTMENT GALLERY

President University

Resto Plaza 1F - Jababeka
Education Park
Jl. Ki Hajar Dewantara Raya
Cikarang - Bekasi 17550
T +62 21 89106030

Universitas Siliwangi Tasikmalaya

Jl. Siliwangi No. 24
Tasikmalaya 46151
T +62 265 323685
F +62 265 323534

Universitas Muhammadiyah Sidoarjo

Jl. Majapahit 866B
Sidoarjo, Jawa Timur
T +62 31 8945444
F +62 31 8949333

Universitas Tanjungpura Pontianak

Jl. Jendral Ahmad Yani
Pontianak 78124
T +62 561 743465
F +62 561 766840

Universitas Islam Kalimantan FE UNISKA

Jl. Adiyaksa No. 2, Kayu Tangi
Banjarmasin
Tlp. 0511 3303871
Fax. 0511 3303871

STIE Tri Bhakti

Jl. Teuku Umar No. 24
Cut Meutia, Bekasi
Tlp. 021 82429400
Fax. 021 82429500

STIE "AUB" Surakarta

Jl. Mr. Sartono 97, Cengklik
Nusukan, Surakarta 57135
T +62 271 854803
F +62 271 853084

Universitas Surabaya

Jl. Raya Kalirungkt
Surabaya 60293
T +62 31 298 1203
F +62 31 298 1204

Universitas Muhammadiyah Gresik

Jl. Sumatra 101 GKB
Gresik 61121
T +62 31 395 1414
F +62 31 395 2585

Universitas Negeri Malang

Jl. Surabaya No. 6
Malang 65145
T +62 341 585914
F +62 341 552888

Universitas Muhammadiyah Malang

Jl. Raya Tlogomas 246
Malang 65144
T +62 341 464318-9
F +62 341 460782

STIE AAS Surakarta

Jalan Slamet Riyadi No 361
Kartasura, Surakarta
Telp. (0271) 726156
Faks. (0271) 726156

STIE Malangkececwara

Jl. Terusan Candi Kalasan
Malang 65142
T +62 341 491813
F +62 341 495619

Universitas Jember

Jl. Jawa No. 17
Jember 68121
T +62 331 330732
F +62 331 326419

STIESIA Surabaya

Jl. Menur Pumpungan 30
Surabaya
T +62 31 5947505
F +62 31 5932218

Universitas 17 Agustus 1945

Banyuwangi
Jl. Adi Sucipto 26
Banyuwangi, Jawa Timur
T +62 333 419613
F +62 333 419163

Universitas Pesantren Tinggi Darul Ulum

Kompleks PP Darul Ulu,
Peterongan
Jombang, Jawa Timur 60281
Telp. (0321) 873655
Faks. (0321) 875771

Politeknik Kediri

Jl. Mayor Bismo No. 27
Kediri 64121
T +62 354 683128
F +62 354 683128

Sekolah Tinggi Manajemen Informatika dan Teknik Komputer Bali

Jalan Puputan No. 86, Renon,
Denpasar
Telp. +62361 244445
Faks. +62361 264773

Universitas Muhammadiyah

Pontianak
Fakultas Ekonomi UM
Pontianak
Jl. Ahmad Yani, No. 111,
Pontianak 78124
Telp. +62561 743465
Faks. +62561 766840

Universitas Negeri Makassar

Fakultas Ekonomi Gedung BT
Lt.2
Jl. A.P. Pettarani, Kampus
UNM, Gunungsari Baru
Makassar 90222
T +62 411 889464 / 881244
F +62 411 887604

Disclaimer:

Information, opinions and recommendations contained in this document are presented by PT Reliance Securities Tbk. from sources that are considered reliable and dependable. This document is not an offer, invitation or any kind of representations to decide to buy or sell stock. Investment decisions taken based on this document is not the responsibility of PT Reliance Securities Tbk. PT Reliance Securities Tbk. reserves the right to change the contents of this document at any time without prior notice.