

Weekly IHSG



5377.15
12.35
0.23%
Vol (Mn): 40.89
Val (Bn): 31.78
F Net B (Bn): (1,887)

Weekly LQ-45



924.82
2.62
0.28%

Sector	Last	WoW Chg	(%)
Agriculture	1785.66	-7.70	-0.43%
Mining	1208.04	49.44	4.27%
Basic Industry	525.89	13.08	2.55%
Misc Industry	1364.00	-4.74	-0.35%
Consumer	2509.39	50.23	2.04%
Property	563.83	-1.25	-0.22%
Infrastructure	1107.09	-24.89	-2.20%
Finance	794.99	-8.86	-1.10%
Trade	854.39	1.98	0.23%
Manufacture	1428.91	23.78	1.69%
Composite	5377.15	12.35	0.23%

Source: Bloomberg

International	Last	WoW Chg	(%)
DJIA	18,240.49	-67.66	-0.37%
Nasdaq	5,292.41	-19.59	-0.37%
S&P 500	2,153.74	-14.53	-0.67%
FTSE 100	7,045.82	146.49	2.12%
Nikkei 225	16,860.00	218.88	1.32%
Hang Seng	23,851.00	255.31	1.08%
Sanghai Comp	3,293.9	40.59	1.25%

Source: Bloomberg

Exchange Rates	Last	WoW Chg	(%)
USD / IDR	12976	-23.00	-0.18%
US \$ Index	96.69	1.17	1.22%
EUR / USD	1.12	-0.01	-0.48%
USD / JPY	103.17	1.92	1.90%
GBP / USD	1.24	-0.05	-3.65%
USD / CNY	6.70	0.03	0.46%
AUD / USD	0.75	-0.02	-2.05%

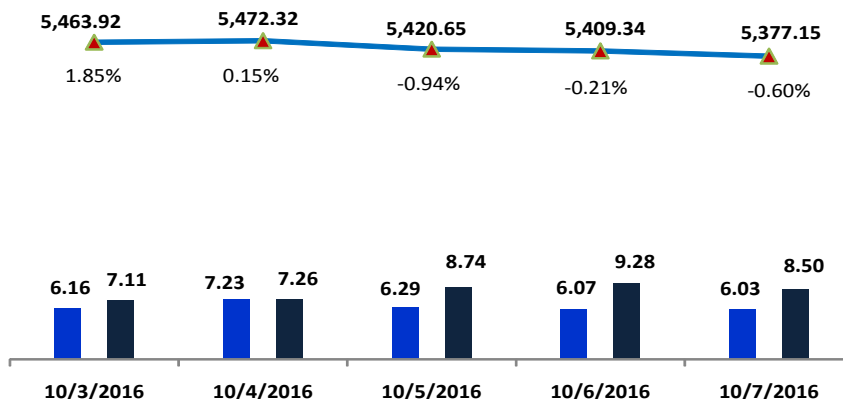
Others	Last	WoW Chg	(%)
S&P 500 Vltv (VIX)	14.24	0.95	7.15%
Baltic Dry	921.00	46.00	5.26%

Source: Bloomberg

Monday Recommendation Flashback

Stock	Rec.	09/30/2016 (close)	Stop Loss	Loss	Week's Highest	Date	Potential Gain	Week's Lowest	Date	Potential Gain
ANTM	PS	820	770	-6.10%	860	10/4/2016	4.88%	770	10/6/2016	-6.10%
MAPI	S	4,600	4,530	-1.52%	4,710	4/10/2016	2.39%	4,500	10/5/2016	-2.17%
ROTI	PS	1,690	1,640	-2.96%	1,690	10/3/2016	0.00%	1,630	10/6/2016	-3.55%
SSMS	TB	1,555	1,450	-6.75%	1,570	10/3/2016	0.96%	1,525	10/3/2016	-1.93%

IHSG on the Week (10/3/2016 - 10/07/2016)



LS-27 Close	943.82	946.53	935.61	933.75	924.82
LS-27 % Chg	0.02	0.00	-0.01	0.00	-0.01
Frgn Net Buy (Bn)	0.00	-378.09	-841.18	-527.80	-140.37
	943.84	568.44	94.42	405.95	784.44

IHSG



S1	5280	R1	5400
S2	5170	R2	5535
S3	5100	R3	5700

Comment:

IHSG declined significant after forming the negative signal at overbought momentum. Trading range 5353–5483.

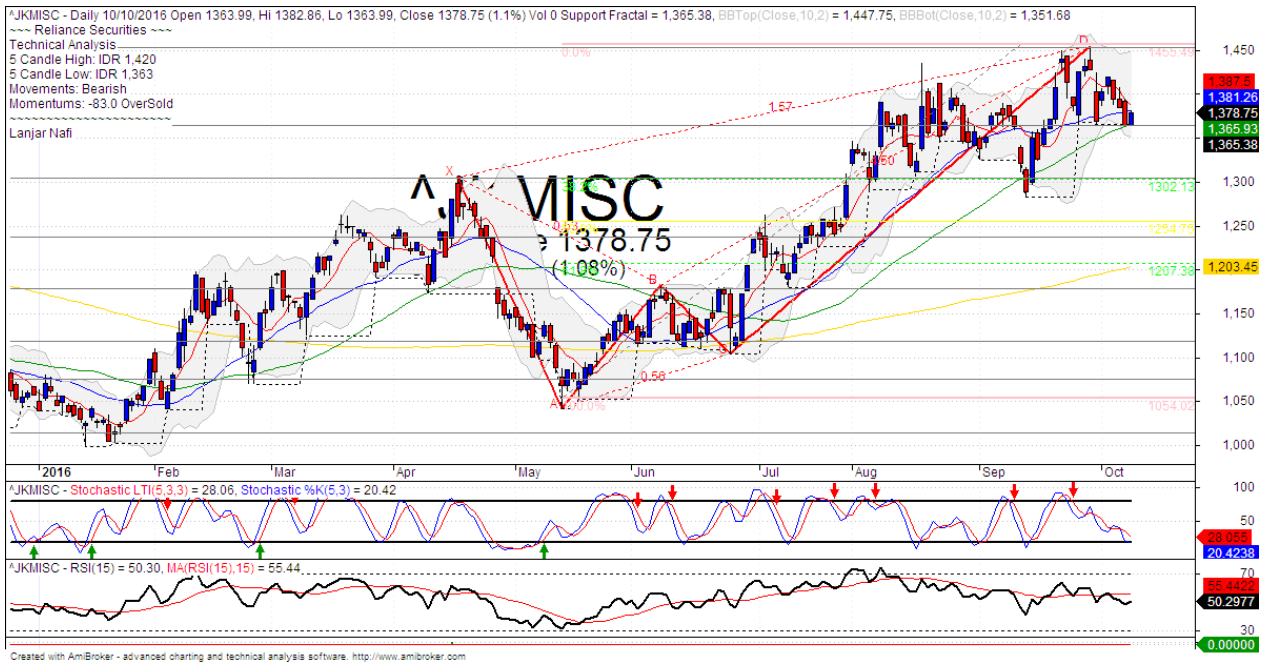
In the first season of the week. The index bearish movement after forming northern star candlestick pattern at upper Bollinger bands. The index still trying to rebound at MA50 support level.

Stochastic bearish movement from overbought oscillator. RSI Indicator broke the support of momentum at middle oscillator.

Medium and long term bullish trend movement.

This week resistance at 5400. Stop-loss level if broke out MA25 support level at 5345. Downside potential until 5260 (38.2% of Fibonacci retracement).

Miscellaneous Industry Index



S1	1365	R1	1455
S2	1305	R2	1515
S3	1235	R3	1590

Comment:

Miscellaneous Industry index declined significant after pulled back strong resistance level. Trading range 1363–1420.

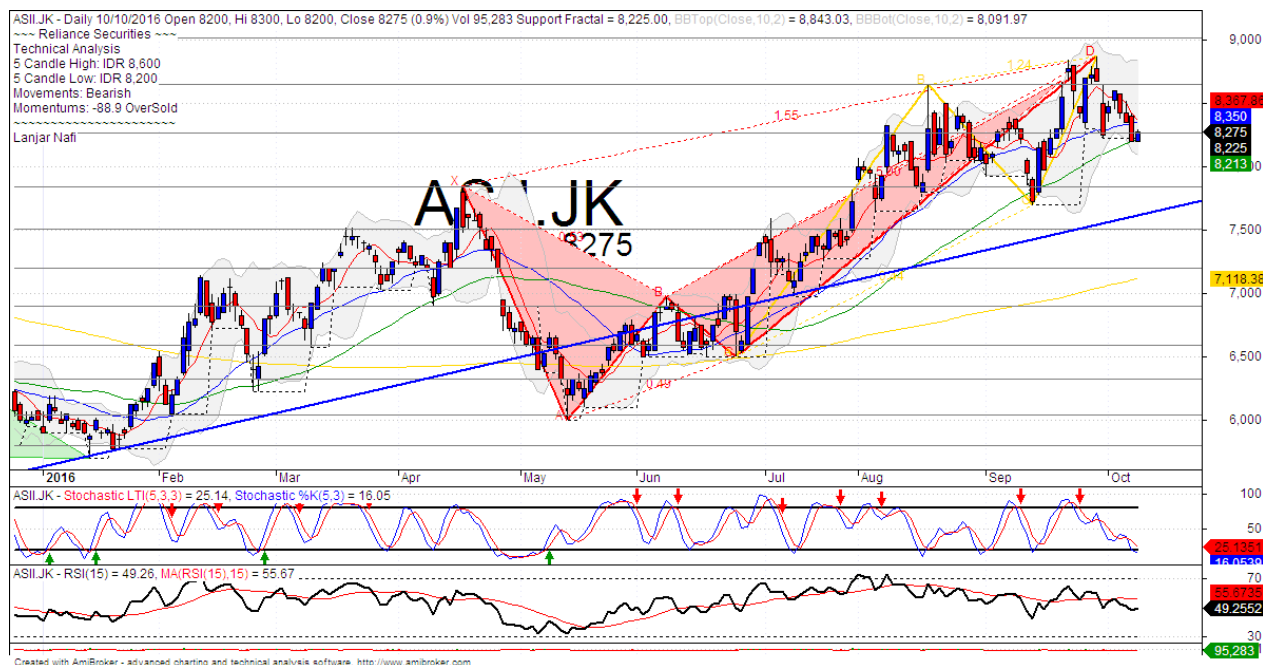
By the first session today, the index arrived at MA50 support level with bullish harami formations. Short term reversal signal even the index has formations the bearish butterfly harmonic pattern for long term.

Stochastic has golden-cross indications at oversold oscillator. Broad upside potential.

Short term bearish and long term bullish trend movement.

This week resistance at 1390 (MA7 resistance level). Upside target to 1455 (Strong resistance level). Stop-loss position at 1350 (Broke the MA50 support level).

ASII



S1	7850	R1	8275
S2	7500	R2	8650
S3	7200	R3	9000

Comment:

AAII has declined significant pulled back the MA7 resistance level last week. Trading range at 8200–8600.

By the first session this week, the price arrived at MA50 support level and forming the bullish harami candlestick pattern. Reversal signal.

Stochastic golden-cross appeared at the oversold oscillator. Broad upside potential.

Long term bullish trend movement.

Upside scenario: (Probability 70%)

If the price has broke the MA25 resistance level at 8350. Upside target to 8850 until 9300 (Retracement resistance level).

Downside scenario: (Probability 30%)

Stop loss level at 8050 (Broke the MA50 support level). Do a tight stop loss on this level. If a break down appeared, the price will potentially continue to 7775 (Bullish trend support level).

your reliable partner | 4

HEAD OFFICE

Reliance Building

Jl. Pluit Kencana No. 15A,
Pluit Penjaringan
Jakarta 14450
T +62 21 661 7768
F +62 21 661 9884

RESEARCH DIVISION

Robertus Yanuar Hardy
robertus@reliance-securities.com
Lanjar Nafi Taulat I
lanjar@reliance-securities.com
Aji Setiawan
aji@reliance-securities.com
Shanti Dwi Jayanti
santi@reliance-securities.com

Senior Analyst
Technical Analyst
Associate Analyst
Associate Analyst

BRANCE OFFICE

Jakarta- Pluit

Jl. Pluit Kencana No. 15A
Pluit Penjaringan
Jakarta 14450
T +62 21 661 7768
F +62 21 661 9884

Bandung

Jl.Cisangkuy No.58
Bandung 40115
T +62 22 721 8200
F +62 22 721 9255

Surabaya - Gubeng

Jl. Bangka No. 22
Surabaya 60281
T +62 31 501 1128
F +62 31 503 3196

Makassar

Jl. Boto Lempangan No. 34 J
Makassar 90113
T +62 411 3632388
F +62 411 3614634

Jakarta - Sudirman

Menara Batavia 27th floor
Jl. KH. Mas Mansyur Kav 126
Jakarta 10220
T +62 21 5790 5455
F +62 21 5795 0728

Tasikmalaya

Ruko Tasik Indah Plaza No.21
Jl. KHZ Mustofa No. 345
Tasikmalaya 46121
T +62 265 345000
F +62 265 345003

Surabaya - Diponegoro

Jl. Diponegoro 26 D
Surabaya 60264
T +62 31 567 0388
F +62 31 561 0528

Pekanbaru

Jl. Sumatera No. 9, Simpang
Empat, Pekanbaru - Riau
28000
T +62 761 7894368
F +62 761 7894370

Jakarta - Kebon Jeruk

Plaza Kebon Jeruk
Jl.Raya Perjuangan Blok A/2
Jakarta 11530
T +62 21 532 4074
F +62 21 536 2157

Surakarta

Jl. Slamet Riyadi 330A
Solo 57145
T +62 271 736599
F +62 271 733478

Bali - Denpasar

Dewata Square Blok A3
Jl. Letda Tantular Renon
Denpasar 802361
T +62 361 225099
F +62 361 245099

Medan

Jl. Teuku Amir Hamzah No.26
T +62 61 6638592
F +62 61 6638023

BSD

Jl. Pahlawan Seribu Ruko BSD
Sektor 7 Blok RK kav. 9
Tangerang 15310
T +62 21 5387495
F +62 21 5387494

Malang

Jl. Guntur No. 19
Malang 65112
T +62 341 347 611
F +62 341 347 615

Pontianak

Jl. MT Haryono No. 6
Pontianak 78121
T +62 561 575674
F +62 561 575670

Jakarta - Centro

Ruko Centro Residence Kav. 4-5
Tower C Lt. 1 No. 26-29
Jl. Macan, Daan Mogot
Jakarta 14450
T +62 21 56945227
F +62 21 56945226

Balikpapan

Ruko Bukit Damai Indah
Blok I, No. 3, Rt.34
Jl. MT. Haryono, Gunung
Bahagia, Balikpapan Selatan
76114
T +62 542 746313-16
F +62 542 746317

IDX CORNER & INVESTMENT GALLERY

President University

Resto Plaza 1F - Jababeka
Education Park
Jl. Ki Hajar Dewantara Raya
Cikarang - Bekasi 17550
T +62 21 89106030

Universitas Siliwangi Tasikmalaya

Jl. Siliwangi No. 24
Tasikmalaya 46151
T +62 265 323685
F +62 265 323534

UPN "Veteran" Yogyakarta

Jl. Babarsari 2, Tambak Bayan
Yogyakarta
T +62 274 485268
F +62 274 487147

Universitas Muhammadiyah Sidoarjo

Jl. Majapahit 866B
Sidoarjo, Jawa Timur
T +62 31 8945444
F +62 31 8949333

Universitas Tanjungpura Pontianak

Jl. Jendral Ahmad Yani
Pontianak 78124
T +62 561 743465
F +62 561 766840

Universitas Islam Kalimantan FE UNISKA

Jl. Adiyaksa No. 2, Kayu Tangi
Banjarmasin
Tlp. 0511 3303871
Fax. 0511 3303871

STIE "AUB" Surakarta

Jl. Mr. Sartono 97, Cengklik
Nusukan, Surakarta 57135
T +62 271 854803
F +62 271 853084

Universitas Surabaya

Jl. Raya Kalirungkut
Surabaya 60293
T +62 31 298 1203
F +62 31 298 1204

Universitas Muhammadiyah Gresik

Jl. Sumatra 101 GKB
Gresik 61121
T +62 31 395 1414
F +62 31 395 2585

Universitas Negeri Malang

Jl. Surabaya No. 6
Malang 65145
T +62 341 585914
F +62 341 552888

Universitas Muhammadiyah Malang

Jl. Raya Tlogomas 246
Malang 65144
T +62 341 464318-9
F +62 341 460782

STIE Tri Bhakti

Jl. Teuku Umar No. 24
Cut Meutia, Bekasi
Tlp. 021 82429400
Fax. 021 82429500

STIE Malangkececwara

Jl. Terusan Candi Kalasan
Malang 65142
T +62 341 491813
F +62 341 495619

Universitas Jember

Jl. Jawa No. 17
Jember 68121
T +62 331 330732
F +62 331 326419

STIESIA Surabaya

Jl. Menur Pumpungan 30
Surabaya
T +62 31 5947505
F +62 31 5932218

Universitas 17 Agustus 1945

Banyuwangi
Jl. Adi Sucipto 26
Banyuwangi, Jawa Timur
T +62 333 419613
F +62 333 419163

Universitas Pesantren Tinggi Darul Ulum

Kompleks PP Darul Ulu,
Peterongan
Jombang, Jawa Timur 60281
Telp. (0321) 873655
Faks. (0321) 875771

Politeknik Kediri

Jl. Mayor Bismo No. 27
Kediri 64121
T +62 354 683128
F +62 354 683128

Sekolah Tinggi Manajemen Informatika dan Teknik Komputer Bali

Jalan Puputan No. 86, Renon,
Denpasar
Telp. +62361 244445
Faks. +62361 264773

Universitas Muhammadiyah

Pontianak
Fakultas Ekonomi UM
Pontianak
Jl. Ahmad Yani, No. 111,
Pontianak 78124
Telp. +62561 743465
Faks. +62561 766840

Universitas Negeri Makassar

Fakultas Ekonomi Gedung BT
Lt.2
Jl. A.P. Pettarani, Kampus
UNM, Gunungsari Baru
Makassar 90222
T +62 411 889464 / 881244
F +62 411 887604

STIE AAS Surakarta

Jalan Slamet Riyadi No 361
Kartasura, Surakarta
Telp. (0271) 726156
Faks. (0271) 726156

Disclaimer:

Information, opinions and recommendations contained in this document are presented by PT Reliance Securities Tbk. from sources that are considered reliable and dependable. This document is not an offer, invitation or any kind of representations to decide to buy or sell stock. Investment decisions taken based on this document is not the responsibility of PT Reliance Securities Tbk. PT Reliance Securities Tbk. reserves the right to change the contents of this document at any time without prior notice.