

Weekly IHSG



5399.89
22.74
0.42%
Vol (Mn): 48.15
Val (Bn): 35.28
F Net B (Bn): (751)

Weekly LQ-45



931.43
6.61
0.71%

Sector	Last	WoW Chg	(%)
Agriculture	1780.00	-5.66	-0.32%
Basic Industry	525.18	-0.71	-0.13%
Composite	5399.89	22.74	0.42%
Consumer	2518.54	9.15	0.36%
Finance	806.55	11.56	1.45%
Infrastructure	1104.49	-2.60	-0.23%
Manufacture	1435.29	6.38	0.45%
Mining	1246.81	38.78	3.21%
Misc Industry	1381.92	17.93	1.31%
Property	564.39	0.56	0.10%
Trade	836.84	-17.55	-2.05%

Source: Bloomberg

International	Last	WoW Chg	(%)
DJIA	18,138.38	-102.11	-0.56%
Nasdaq	5,214.16	-78.25	-1.48%
S&P 500	2,132.98	-20.76	-0.96%
FTSE 100	7,013.55	-32.27	-0.46%
Nikkei 225	16,880.98	20.98	0.12%
Hang Seng	23,069.44	-781.56	-3.28%
Sanghai Comp	3,303.7	9.83	0.30%

Source: Bloomberg

Exchange Rates	Last	WoW Chg	(%)
USD / IDR	13057	81.00	0.62%
US \$ Index	98.09	1.41	1.45%
EUR / USD	1.10	-0.02	-1.78%
USD / JPY	104.23	1.06	1.03%
GBP / USD	1.22	-0.02	-1.98%
USD / CNY	6.73	0.03	0.45%
AUD / USD	0.76	0.01	1.25%

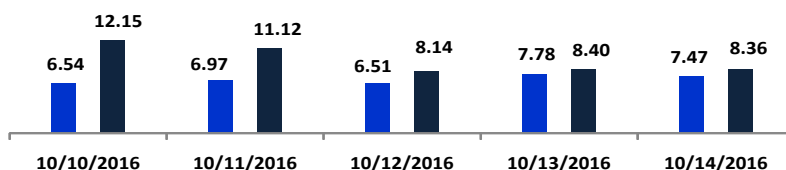
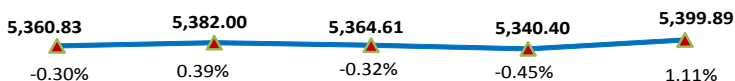
Others	Last	WoW Chg	(%)
S&P 500 Vltty (VIX)	16.12	1.88	13.20%
Baltic Dry	892.00	-29.00	-3.15%

Source: Bloomberg

Monday Recommendation Flashback

Stock	Rec.	10/7/2016 (close)	Stop Loss	Loss	Week's Highest	Date	Potential Gain	Week's Lowest	Date	Potential Gain
BMRI	TB	10,900	10,700	-1.83%	11,375	10/14/2016	4.36%	10,750	10/12/2016	-1.38%
GJTL	TB	1,400	1,330	-5.00%	1,360	10/13/2016	-2.86%	1,235	10/13/2016	-11.79%
PTBA	PS	10,850	10,525	-3.00%	11,875	10/12/2016	9.45%	10,700	10/10/2016	-1.38%
ADRO	H	1,375	1,280	-6.91%	1,430	10/13/2016	4.00%	1,345	10/10/2016	-2.18%

IHSG on the Week (10/10/2016 - 10/14/2016)



LS-27 Close	919.37	924.64	920.20	917.27	931.43
LS-27 % Chg	-0.01	0.01	0.00	0.00	0.02
Frgn Net Buy (Bn)	1970.25	-207.39	-962.97	-935.51	-615.84
	2889.61	717.26	-42.77	-18.24	315.61

your **reliable** partner | 1

IHSG



S1	5400	R1	5550
S2	5280	R2	5700
S3	5170	R3	5865

Comment:

IHSG mixed at MA50 and MA25 support level last week. Trading range at 5332–5422.

In the first session of the week. The index rebounded at MA25 support level with broke confirmations at MA50 line. Its positive signal for the week.

Stochastic bullish movement after golden-cross at overbought oscillator. Broad upside potential. RSI still consolidate at middle area and still try break out the MA15 of momentums.

Medium and long term bullish trend movement.

This week resistance at 5475 (the highest at this year) with upside potential to 5570 (127.2% raw Fibonacci ratios). Stop-loss level if broke out MA25 support level at 5345. Downside potential until 5260 (38.2% of Fibonacci retracement).

Agriculture Index



S1	1785	R1	1850
S2	1710	R2	1920
S3	1235	R3	1985

Comment:

Agriculture index declined significant after broke the bullish trend line support level. Trading range 1758–1816.

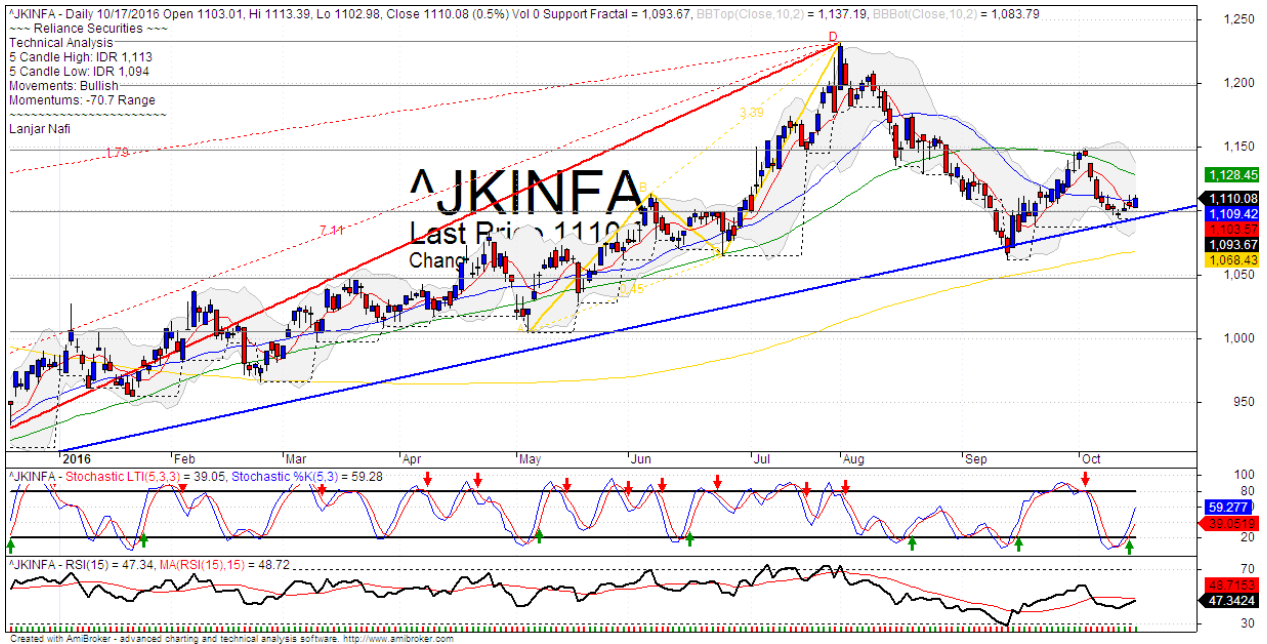
By the first session today, the trying to whipsaw at bullish trend line after arrived and rebounded at MA200 support level. Reversal signal.

Stochastic has bullish consolidations at middle oscillator. Broad upside potential. RSI indicator has bullish movement after broke the MA15 of momentum.

Long term bullish trend movement.

This week resistance at 1830 (MA50 resistance level). Upside target to 1900. Stop-loss position at 1750 (Broke the MA200 support level).

Infrastructure Index



S1	1100	R1	1145
S2	1045	R2	1200
S3	1000	R3	1230

Comment:

Infrastructure index declined significant after pulled bullish the MA50 resistance level last week. Trading range at 1094–1113.

By the first session today, the index rebounded at bullish trend and MA25 support level. Its positive signal.

Stochastic, bullish movement after golden-cross at oversold. RSI indications still trying to broke the resistance of momentum.

Long term bullish trend movement.

This week resistance level at 1128 (MA50 resistance level). Stop-loss level at 1090 (Break out bullish trend support level). Upside target if rebound confirmations to 1150.

AALI



S1	14900	R1	15900
S2	14000	R2	16800
S3	13000	R3	17675

Comment:

AAJI has declined significant pulled back the upper Bollinger bands resistance level last week. Trading range at 14725–15725.

By the first session this week, the price confirmations the bullish harami candlestick pattern with whipsaw at bullish trend line.

Stochastic golden-cross appeared at the oversold oscillator. Broad upside potential.

Long term bullish trend movement.

Upside scenario: (Probability 80%)

If the price has broke the MA50 resistance level at 15780. Upside target to 16300 until 16800 (Retracement resistance level).

Downside scenario: (Probability 20%)

Stop loss level at 14950 (Broke the bullish trend support level). Do a tight stop loss on this level. If a break down appeared, the price will potentially continue to 14000 (Support level).

TLKM



S1	4200	R1	4430
S2	3950	R2	4740
S3	3950	R3	5025

Comment:

TLKM declined after broke the MA25 support level last week. Trading range at 4120–4250.

By the first session this week, The price has rebounded at bullish trend after broke the MA7 resistance level. Accumulations phase.

Stochastic, bullish movement at middle oscillator. RSI indicator moved bullish momentum.

Long term bearish movement.

Upside scenario: (Probability 70%)

If the price has broke the MA50 resistance level at 4210. Upside target to 4350 – 4430.

Downside scenario: (Probability 30%)

Stop loss level at 4130 (Break out bullish support level). Do a tight stop loss on this level. If a break down appeared, the price will potentially continue to 3950.

HEAD OFFICE

Reliance Building

Jl. Pluit Kencana No. 15A,
Pluit Penjaringan
Jakarta 14450
T +62 21 661 7768
F +62 21 661 9884

RESEARCH DIVISION

Robertus Yanuar Hardy
robertus@reliance-securities.com
Lanjar Nafi Taulat I
lanjar@reliance-securities.com
Aji Setiawan
aji@reliance-securities.com
Shanti Dwi Jayanti
santi@reliance-securities.com

Senior Analyst
Technical Analyst
Associate Analyst
Associate Analyst

BRANCE OFFICE

Jakarta- Pluit

Jl. Pluit Kencana No. 15A
Pluit Penjaringan
Jakarta 14450
T +62 21 661 7768
F +62 21 661 9884

Bandung

Jl.Cisangkuy No.58
Bandung 40115
T +62 22 721 8200
F +62 22 721 9255

Surabaya - Gubeng

Jl. Bangka No. 22
Surabaya 60281
T +62 31 501 1128
F +62 31 503 3196

Makassar

Jl. Boto Lempangan No. 34 J
Makassar 90113
T +62 411 3632388
F +62 411 3614634

Jakarta - Sudirman

Menara Batavia 27th floor
Jl. KH. Mas Mansyur Kav 126
Jakarta 10220
T +62 21 5790 5455
F +62 21 5795 0728

Tasikmalaya

Ruko Tasik Indah Plaza No.21
Jl. KHZ Mustofa No. 345
Tasikmalaya 46121
T +62 265 345000
F +62 265 345003

Surabaya - Diponegoro

Jl. Diponegoro 26 D
Surabaya 60264
T +62 31 567 0388
F +62 31 561 0528

Pekanbaru

Jl. Sumatera No. 9, Simpang
Empat, Pekanbaru - Riau
28000
T +62 761 7894368
F +62 761 7894370

Jakarta - Kebon Jeruk

Plaza Kebon Jeruk
Jl.Raya Perjuangan Blok A/2
Jakarta 11530
T +62 21 532 4074
F +62 21 536 2157

Surakarta

Jl. Slamet Riyadi 330A
Solo 57145
T +62 271 736599
F +62 271 733478

Bali - Denpasar

Dewata Square Blok A3
Jl. Letda Tantular Renon
Denpasar 802361
T +62 361 225099
F +62 361 245099

Medan

Jl. Teuku Amir Hamzah No.26
T +62 61 6638592
F +62 61 6638023

BSD

Jl. Pahlawan Seribu Ruko BSD
Sektor 7 Blok RK kav. 9
Tangerang 15310
T +62 21 5387495
F +62 21 5387494

Malang

Jl. Guntur No. 19
Malang 65112
T +62 341 347 611
F +62 341 347 615

Pontianak

Jl. MT Haryono No. 6
Pontianak 78121
T +62 561 575674
F +62 561 575670

Jakarta - Centro

Ruko Centro Residence Kav. 4-5
Tower C Lt. 1 No. 26-29
Jl. Macan, Daan Mogot
Jakarta 14450
T +62 21 56945227
F +62 21 56945226

Balikpapan

Ruko Bukit Damai Indah
Blok I, No. 3, Rt.34
Jl. MT. Haryono, Gunung
Bahagia, Balikpapan Selatan
76114
T +62 542 746313-16
F +62 542 746317

IDX CORNER & INVESTMENT GALLERY

President University

Resto Plaza 1F - Jababeka
Education Park
Jl. Ki Hajar Dewantara Raya
Cikarang - Bekasi 17550
T +62 21 89106030

Universitas Siliwangi Tasikmalaya

Jl. Siliwangi No. 24
Tasikmalaya 46151
T +62 265 323685
F +62 265 323534

UPN "Veteran" Yogyakarta

Jl. Babarsari 2, Tambak Bayan
Yogyakarta
T +62 274 485268
F +62 274 487147

Universitas Muhammadiyah Sidoarjo

Jl. Majapahit 866B
Sidoarjo, Jawa Timur
T +62 31 8945444
F +62 31 8949333

Universitas Tanjungpura Pontianak

Jl. Jendral Ahmad Yani
Pontianak 78124
T +62 561 743465
F +62 561 766840

Universitas Islam Kalimantan FE UNISKA

Jl. Adiyaksa No. 2, Kayu Tangi
Banjarmasin
Tlp. 0511 3303871
Fax. 0511 3303871

STIE "AUB" Surakarta

Jl. Mr. Sartono 97, Cengklik
Nusukan, Surakarta 57135
T +62 271 854803
F +62 271 853084

Universitas Surabaya

Jl. Raya Kalirungkut
Surabaya 60293
T +62 31 298 1203
F +62 31 298 1204

Universitas Muhammadiyah Gresik

Jl. Sumatra 101 GKB
Gresik 61121
T +62 31 395 1414
F +62 31 395 2585

Universitas Negeri Malang

Jl. Surabaya No. 6
Malang 65145
T +62 341 585914
F +62 341 552888

Universitas Muhammadiyah Malang

Jl. Raya Tlogomas 246
Malang 65144
T +62 341 464318-9
F +62 341 460782

STIE Tri Bhakti

Jl. Teuku Umar No. 24
Cut Meutia, Bekasi
Tlp. 021 82429400
Fax. 021 82429500

STIE Malangkececwara

Jl. Terusan Candi Kalasan
Malang 65142
T +62 341 491813
F +62 341 495619

Universitas Jember

Jl. Jawa No. 17
Jember 68121
T +62 331 330732
F +62 331 326419

STIESIA Surabaya

Jl. Menur Pumpungan 30
Surabaya
T +62 31 5947505
F +62 31 5932218

Universitas 17 Agustus 1945

Banyuwangi
Jl. Adi Sucipto 26
Banyuwangi, Jawa Timur
T +62 333 419613
F +62 333 419163

Universitas Pesantren Tinggi Darul Ulum

Kompleks PP Darul Ulu,
Peterongan
Jombang, Jawa Timur 60281
Telp. (0321) 873655
Faks. (0321) 875771

Politeknik Kediri

Jl. Mayor Bismo No. 27
Kediri 64121
T +62 354 683128
F +62 354 683128

Sekolah Tinggi Manajemen Informatika dan Teknik Komputer Bali

Jalan Puputan No. 86, Renon,
Denpasar
Telp. +62361 244445
Faks. +62361 264773

Universitas Muhammadiyah

Pontianak
Fakultas Ekonomi UM
Pontianak
Jl. Ahmad Yani, No. 111,
Pontianak 78124
Telp. +62561 743465
Faks. +62561 766840

Universitas Negeri Makassar

Fakultas Ekonomi Gedung BT
Lt.2
Jl. A.P. Pettarani, Kampus
UNM, Gunungsari Baru
Makassar 90222
T +62 411 889464 / 881244
F +62 411 887604

STIE AAS Surakarta

Jalan Slamet Riyadi No 361
Kartasura, Surakarta
Telp. (0271) 726156
Faks. (0271) 726156

Disclaimer:

Information, opinions and recommendations contained in this document are presented by PT Reliance Securities Tbk. from sources that are considered reliable and dependable. This document is not an offer, invitation or any kind of representations to decide to buy or sell stock. Investment decisions taken based on this document is not the responsibility of PT Reliance Securities Tbk. PT Reliance Securities Tbk. reserves the right to change the contents of this document at any time without prior notice.