

### Weekly IHSG



5410.27  
1.03  
0.02%

Vol (Mn): 98.11  
Val (Bn): 42.34  
F Net B (Bn): (193)

### Weekly LQ-45



926.42  
-4.04  
-0.43%

International	Last	WoW Chg	(%)
DJIA	18,161.19	15.48	0.09%
Nasdaq	5,190.10	-67.30	-1.28%
S&P 500	2,126.41	-14.75	-0.69%
FTSE 100	6,996.26	-67.44	-0.95%
Nikkei 225	17,425.02	190.60	1.11%
Hang Seng	22,944.69	-639.80	-2.71%
Sanghai Comp	3,336.3	-31.30	-0.93%

Source: Bloomberg

Sector	Last	WoW Chg	(%)
Agriculture	1794.86	12.48	0.70%
Basic Industry	546.46	20.19	3.84%
Composite	5410.27	1.03	0.02%
Consumer	2477.48	-34.78	-1.38%
Finance	806.87	0.21	0.03%
Infrastructure	1102.51	1.39	0.13%
Manufacture	1426.46	-7.68	-0.54%
Mining	1301.85	45.21	3.60%
Misc Industry	1359.63	-25.53	-1.84%
Property	560.71	-4.37	-0.77%
Trade	859.55	-3.44	-0.40%

Source: Bloomberg

Exchange Rates	Last	WoW Chg	(%)
USD / IDR	13053	46.00	0.35%
US \$ Index	98.51	-0.08	-0.08%
EUR / USD	1.10	0.01	0.72%
USD / JPY	104.92	1.01	0.97%
GBP / USD	1.22	-0.01	-0.51%
USD / CNY	6.76	-0.01	-0.13%
AUD / USD	0.76	0.00	-0.38%

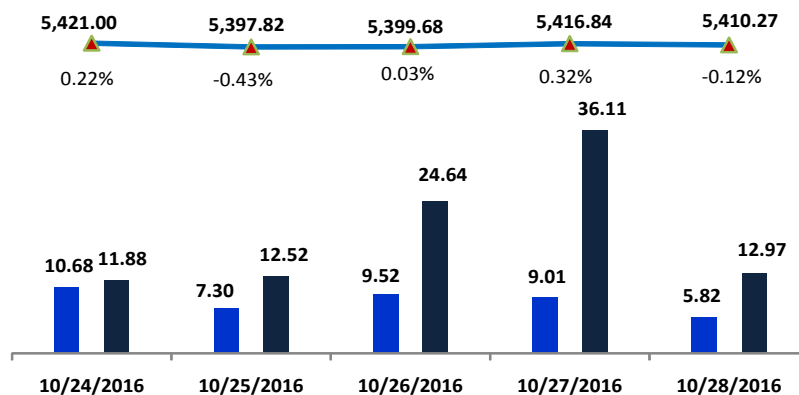
Others	Last	WoW Chg	(%)
S&P 500 Vlty (VIX)	16.31	3.24	24.79%
Baltic Dry	834.00	-8.00	-0.95%

Source: Bloomberg

### Monday Recommendation Flashback

Stock	Rec.	10/21/2016 (close)	Stop Loss	Loss	Week's Highest	Date	Potential Gain	Week's Lowest	Date	Potential Gain
APLN	SB	288	278	-3.47%	304	10/24/2016	5.56%	286	10/27/2016	-0.69%
UNTR	S	20,200	19,800	-1.98%	21,600	10/27/2016	6.93%	20,100	10/24/2016	-0.50%
KRAS	TB	695	660	-5.04%	720	10/25/2016	3.60%	690	10/27/2016	-0.72%
INDF	SB	8,725	8,450	-3.15%	8,775	10/24/2016	0.57%	8,400	10/26/2016	-3.72%

### IHSG on the Week (10/24/2016 - 10/28/2016)



LS-27 Close	929.93	924.87	922.69	927.53	926.42
LS-27 % Chg	0.00	-0.01	0.00	0.01	0.00
Frgn Net Buy (Bn)	-483.94	101.64	-64.48	235.93	17.67
	445.99	1026.50	858.21	1163.47	944.09

your **reliable** partner | 1

### IHSG



S1	5400	R1	5550
S2	5280	R2	5700
S3	5170	R3	5865

#### Comment:

IHSG mixed at MA50 and MA25 support level last week. Trading range at 5382–5436.

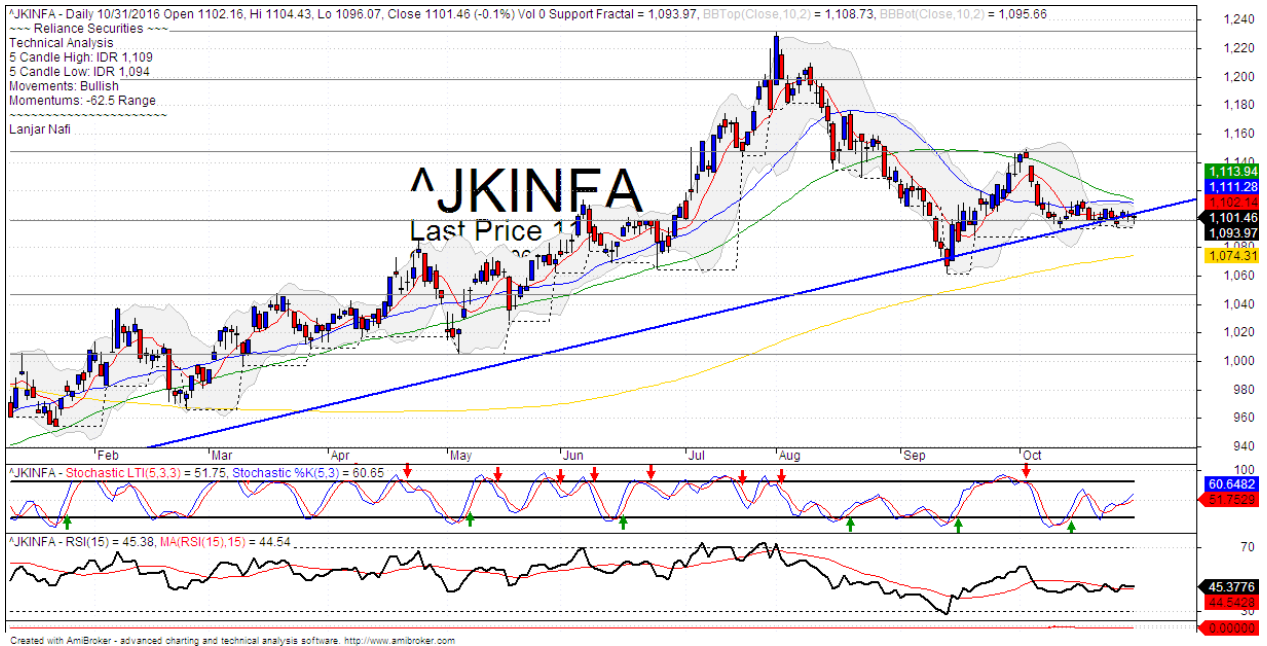
In the first session of the week. The index rebounded at MA50 support level. Its positive signal for the week. But the index still moved at short term bearish trend.

Stochastic bullish movement after golden-cross at overbought oscillator. Broad upside potential. RSI consolidate at middle area and still try break out the MA15 of momentums.

Medium and long term bullish trend movement.

This week resistance at 5475 (the highest at this year) with upside potential to 5570 (127.2% raw Fibonacci ratios). Stop-loss level if broke out MA25 support level at 5400. Downside potential until 5260 (38.2% of Fibonacci retracement).

### Infrastructure Index



S1	1100	R1	1145
S2	1045	R2	1200
S3	1000	R3	1230

#### Comment:

Infrastructure index declined significant after pulled bullish the MA50 resistance level last week. Trading range at 1094–1109.

By the first session today, the index rebounded at bullish trend and MA25 support level. Its positive signal.

Stochastic, bullish movement after golden-cross at oversold. RSI indications still trying to broke the resistance of momentum.

Long term bullish trend movement.

This week resistance level at 1113 (MA50 resistance level). Stop-loss level at 1090 (Break out bullish trend support level). Upside target if rebound confirmations to 1150.

### TLKM



S1	4190	R1	4400
S2	3950	R2	4580
S3	3710	R3	4770

#### Comment:

TLKM consolidations at bullish trend support level last week. Trading range at 4180–4260.

By the first session this week, The price trying to rebound at bullish trend line support level with confirmations level if broke the MA25 resistance level.

Stochastic, bullish movement at middle oscillator. RSI indicator flat momentum.

Long term bearish movement.

#### Upside scenario: (Probability 70%)

If the price has broke the MA25 resistance level at 4240. Upside target to 4400 until 4580.

#### Downside scenario: (Probability 30%)

Stop loss level at 4170 (Break out support level). Do a tight stop loss on this level. If a break down appeared, the price will potentially continue to 3780.

## HEAD OFFICE

### Reliance Building

Jl. Pluit Sakti Raya No. 27AB,  
Pluit  
Jakarta 14450  
T. +62 21 661 7768  
F. +62 21 661 9884

## RESEARCH DIVISION

**Robertus Yanuar Hardy**  
*robertus@reliance-securities.com*  
**Lanjar Nafi Taulat I**  
*lanjar@reliance-securities.com*  
**Aji Setiawan**  
*aji@reliance-securities.com*  
**Shanti Dwi Jayanti**  
*santi@reliance-securities.com*

Senior Analyst  
Technical Research Analyst  
Associate Research Analyst  
Associate Research Analyst

## EQUITY DIVISION

### Jakarta- Pluit

Jl. Pluit Sakti Raya No. 27AB,  
Pluit  
Jakarta 14450  
T. +62 21 661 7768  
F. +62 21 661 9884

### Bandung

Jl.Cisangkuy No.58  
Bandung 40115  
T. +62 22 721 8200  
F. +62 22 721 9255

### Surabaya - Gubeng

Jl. Bangka No. 22  
Surabaya 60281  
T. +62 31 501 1128  
F. +62 31 503 3196

### Makassar

Jl. Boto Lempangan No. 34 J  
Makassar- Sulawesi Selatan  
T. +62 411 3632388  
F. +62 411 3614634

### Jakarta - Sudirman

Menara Batavia 27th floor  
Jl. KH. Mas Mansyur Kav 126  
Jakarta 10220  
T. +62 21 5793 0008  
F. +62 21 5793 0010

### Tasikmalaya

Ruko Tasik Indah Plaza No.21  
Jl. KHZ Mustofa No. 345  
Tasikmalaya 46121  
T. +62 265 345000  
F. +62 265 345003

### Surabaya - Diponegoro

Jl. Diponegoro No.26D  
Surabaya 60261  
T. +62 31 567 0388  
F. +62 31 561 0528

### Medan

Jl. Teuku Amir Hamzah No.40-O  
Medan 20117  
T. +62 61 6638592  
F. +62 61 6638023

### Jakarta - Kebon Jeruk

Plaza Kebon Jeruk  
Jl.Raya Perjuangan Blok A/2  
Jakarta 11530  
T. +62 21 532 4074  
F. +62 21 536 2157

### Malang

Jl. Guntur No. 19  
Malang 65112  
T. +62 341 347 611  
F. +62 341 347 615

### Bali - Denpasar

Dewata Square Blok A3  
Jl. Letda Tantular Renon  
Denpasar 802361  
T. +62 361 225099  
F. +62 361 245099

### Tangerang

Jl. Pahlawan Seribu Ruko BSD  
Sektor 7 Blok RK kav. 9  
Tangerang 15310  
T. +62 21 5387495  
F. +62 21 5387494

### Pekanbaru

Jl. Jendral Sudirman No.73  
Pekanbaru-Riau  
T. +62 761 848414  
F. +62 761 849456

### Pontianak

Jl. MT Haryono No. 6  
Pontianak 78121  
T. +62 561 575674  
F. +62 561 575670

### Jakarta - Centro

Ruko Centro Residence Kav. 4-5  
Tower C Lt. 1 No. 26-29  
Jl. Macan, Daan Mogot  
Jakarta 14450  
T. +62 21 56945227  
F. +62 21 56945226

### Solo

Jl. Slamet Riyadi 330<sup>a</sup>  
Solo 57145  
T. +62 271 736599  
F. +62 271 733478

### Balikpapan

Ruko Bukit Damai Indah  
Blok I, No. 3, Rt.34  
Jl. MT. Haryono, Gunung  
Bahagia, Balikpapan Selatan  
76114  
T. +62 542 746313  
F. +62 542 746317

## IDX CORNER & INVESTMENT GALLERY

### President University

Resto Plaza 1F - Jababeka  
Education Park  
Jl. Ki Hajar Dewantara Raya  
Cikarang - Bekasi 17550  
T. +62 21 89106030

### Universitas Siliwangi Tasikmalaya

Jl. Siliwangi No. 24  
Tasikmalaya 46151  
T. +62 265 323685  
F. +62 265 323534

### Politeknik Kediri

Jl. Mayor Bismo No. 27  
Kediri 64121  
T. +62 354 683128  
F. +62 354 683128

### Universitas Muhammadiyah Sidoarjo

Jl. Majapahit 666 B  
Sidoarjo, Jawa Timur  
T. +62 31 8945444  
F. +62 31 8949333

### Universitas Tanjungpura Pontianak

Jl. Jendral Ahmad Yani  
Pontianak 78124  
T. +62 561 743465  
F. +62 561 766840

### Universitas Pesantren Tinggi Darul Ulum

Kompleks Pp Darul Ulu,  
Peterongan  
Jombang, Jawa Timur 60281  
T. +62 321 873655  
F. +62 321 875771

### STIE "AUB" Surakarta

Jl. Mr. Sartono 97, Cengklik  
Nusukan, Surakarta 57135  
T. +62 271 854803  
F. +62 271 853084

### Universitas Surabaya

Jl. Raya Kalirungkut  
Surabaya 60293  
T. +62 31 298 1203  
F. +62 31 298 1204

### Universitas Muhammadiyah Gresik

Jl. Sumatra 101 GKB  
Gresik 61121  
T. +62 31 395 1414  
F. +62 31 395 2585

### Universitas Negeri Malang

Jl. Surabaya No. 6  
Malang 65145  
T. +62 341 585914  
F. +62 341 55288

### Universitas Muhammadiyah Malang

Jl. Raya Tlogomas 246  
Malang 65144  
T. +62 341 464318-9  
F. +62 341 460782

### FSEI IAIN Antasari

Jl. Ahmad Yani Km. 4,5  
Banjarmasin  
T. + 62 511 3265783

### STIE Malangkececwara

Jl. Terusan Candi Kalasan  
Malang 65142  
T. +62 341 491813  
F. +62 341 495619

### STIESIA Surabaya

Jl. Menur Pumpungan 30  
Surabaya  
T. +62 31 5947505  
F. +62 31 5932218

### Universitas 17 Agustus 1945 Banyuwangi

Jl. Adi Sucipto 26  
Banyuwangi, Jawa Timur  
T. +62 333 419613  
F. +62 333 419163

### STIE Tri Bhakti

Jl. Teuku Umar No. 24  
Cut Meutia Setiakawan,  
Bekasi  
T. +62 21 82429400,  
82429500  
F. +62 271 726156

### Universitas Islam Kalimantan

Jl. Adiyaksa No. 2, Kayu  
Tangi, Banjarmasin  
T. + 62 511 3303871  
F. + 62 511 3303871

### STIKOM Bali

Jalan Puputan No. 86, Renon,  
Denpasar  
T. +62361 244445  
F. +62361 264773

### Universitas Muhammadiyah Pontianak

Fakultas Ekonomi UM  
Pontianak  
Jl. Ahmad Yani, No. 111,  
Pontianak 78124  
T. +62561 743465  
F. +62561 766840

### Universitas Negeri Makassar

Fakultas Ekonomi Gedung BT  
Lt.2  
Jl. A.P. Pettarani, Kampus  
UNM, Gunungsari Baru  
Makassar 90222  
T. +62 411 889464 / 881244  
F. +62 411 887604

### STIE AAS Surakarta

Jl. Slamet Riyadi No. 361,  
Kartasura, Surakarta  
T. +62 271 726156  
F. +62 271 726156

### UPN "Veteran" Yogyakarta

Jl. Babarsari 2, Tambak Bayan  
Yogyakarta  
T. +62 274 485268  
F. +62 274 487147

### Disclaimer:

Information, opinions and recommendations contained in this document are presented by PT Reliance Securities Tbk. from sources that are considered reliable and dependable. This document is not an offer, invitation or any kind of representations to decide to buy or sell stock. Investment decisions taken based on this document is not the responsibility of PT Reliance Securities Tbk. PT Reliance Securities Tbk. reserves the right to change the contents of this document at any time without prior notice.