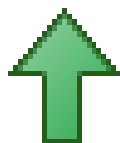


## Monthly IHSG



5,410.27  
45.47  
0.85%

## Monthly LQ-45



926.42  
4.22  
0.46%

International	Close	MoM Chg	(%)
DJIA	18,037.10	(271.05)	(1.48%)
Nasdaq	5,153.58	(158.42)	(2.98%)
S&P 500	2,111.72	(56.55)	(2.61%)
FTSE 100	6,917.14	17.81	0.26%
Nikkei 225	17,442.40	801.28	4.82%
Hang Seng	23,147.07	(448.62)	(1.90%)
STI	2,788.80	(464.50)	(14.28%)

Exchange Rates	Last	MoM Chg	(%)
USD / IDR	13068	69.00	0.53%
EUR / USD	1.1141	(0.01)	(0.53%)
USD / JPY	103.12	1.87	1.85%
GBP / USD	1.2517	(0.04)	(2.97%)
USD / CNY	6.757	0.09	1.30%
AUD / USD	0.7673	(0.00)	(0.35%)

Others	Last	MoM Chg	(%)
S&P 500 Vltty (VIX)	22.08	8.79	66.14%
EIDO: US	25.45	(1.55)	(5.74%)

Sector	Last	MoM Chg	(%)
Composite	5410.27	45.47	0.85%
Agriculture	1794.86	1.50	0.08%
Basic Industry	546.46	33.65	6.56%
Cosumer Goods	2477.48	18.32	0.74%
Finance	806.87	3.02	0.38%
Infrastructure	1102.51	(29.46)	(2.60%)
Mining	1301.85	143.26	12.37%
Miscellaneous	1359.63	(9.10)	(0.66%)
Manufacture	1426.46	21.33	1.52%
Property	560.71	(4.38)	(0.78%)
Trade and Service	859.55	7.14	0.84%

Source: Bloomberg

**Technical Analyst:**

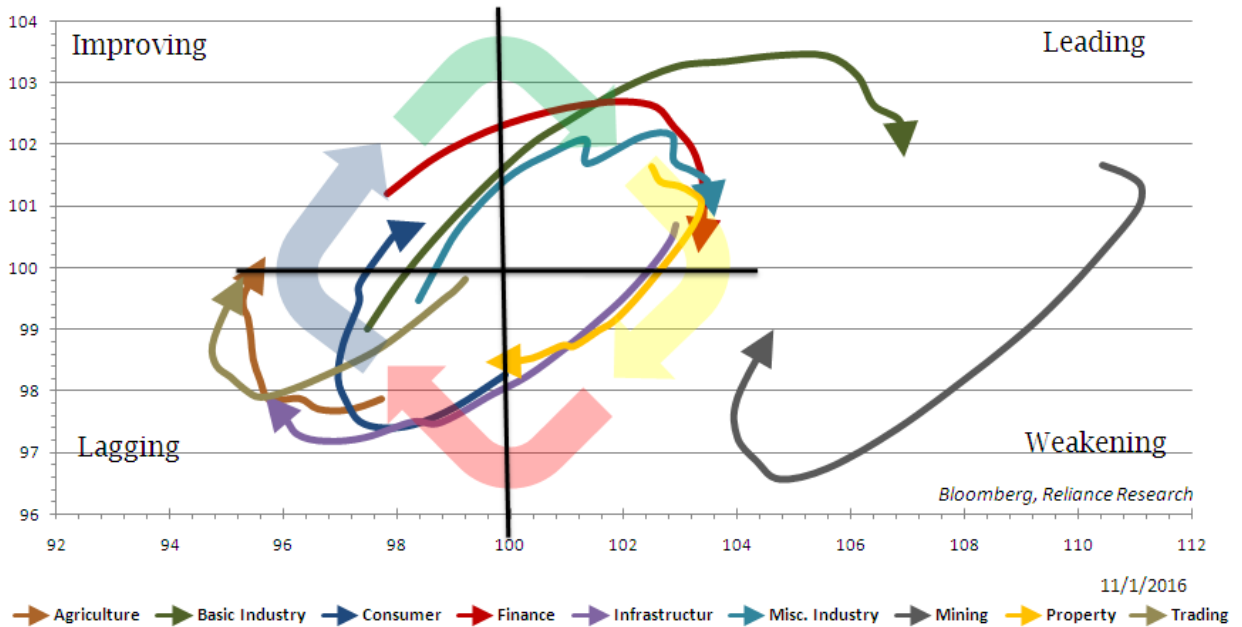
Lanjar Nafi

lanjar@reliance-securities.com

021-57905455 ext. 214

your **reliable** partner | 1

Relative Rotations Graph All Sector Index (15 weeks)



**Comment:**

Upside potentially:

Agriculture index have relative rotations cross the line from lagging area to improving area. The index will be positive trend this month.

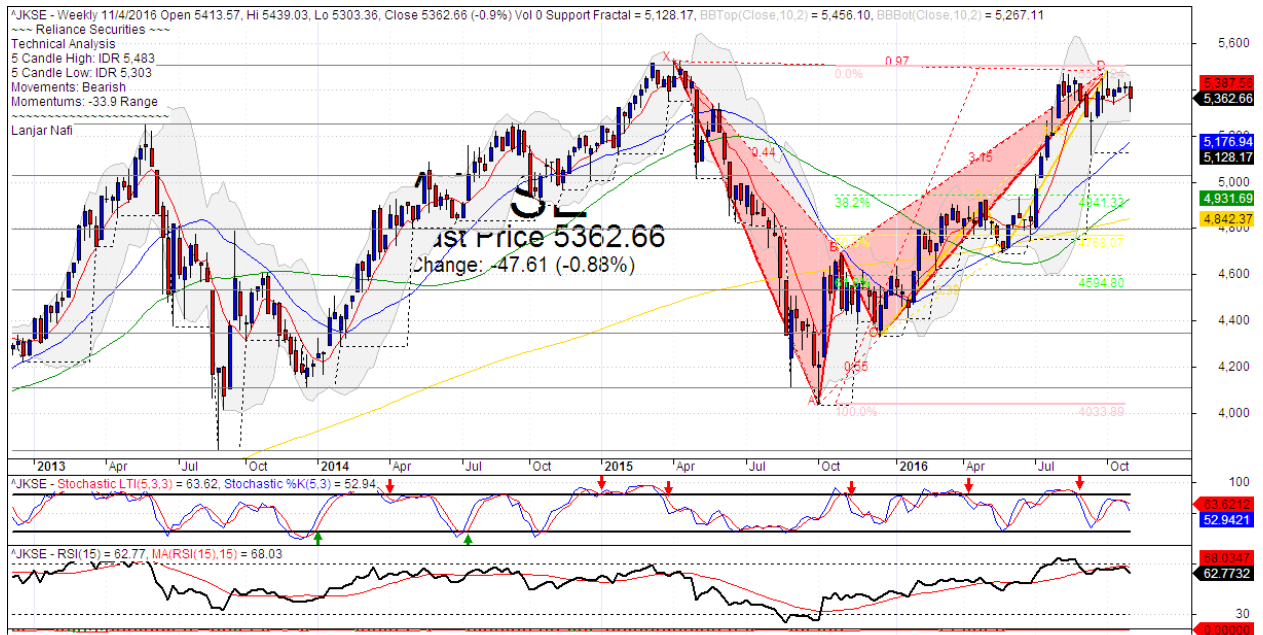
Infrastructure Index moved positive trend from lowest momentum at lagging area.

Downside potentially:

Finance index has leading area and downward movement to weakening with decreasing momentum. It's a negative signal for this sector.

Basic Industry Index to having bearish momentum after arriving at the Leading state. And The first day on this month the index having negative signal to weakening area.

## IHSG Weekly Charts



S1	5250	R1	5500
S2	5030	R2	5775
S3	4790	R3	6100

### Comment:

IHSG sideways movement after forming the bearish gartley harmonic pattern. Trading range at 5303-5483.

By the first November 2016, The Index has the bearish gartley formations if broke the MA7 support level. it's a negative signal.

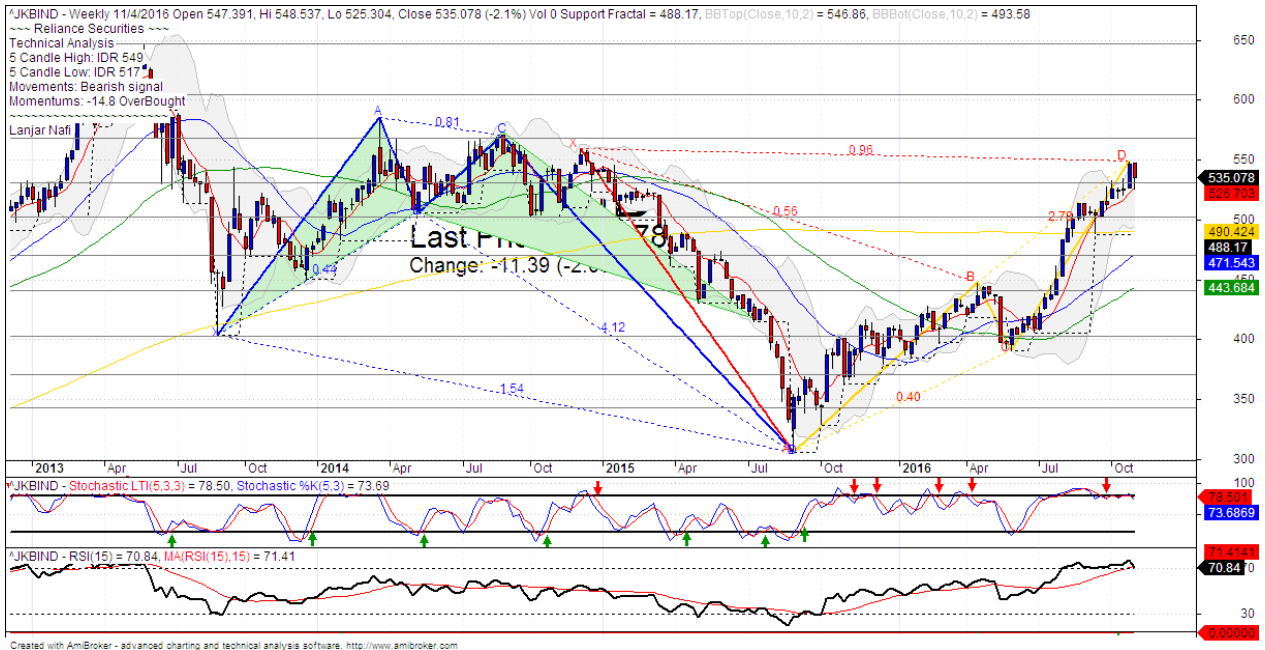
Stochastic indicator has bearish movement after dead-cross at overbought oscillator. Broad downside potential.

RSI indicator still consolidations momentum at overbought oscillator.

This month stop-loss level 5300 (Break out MA7 support level). If break out support level the Index will potentially continue to 4940 (first corrections target from bearish gartley support level).

This month resistance level 5500, if the index has breaks out resistance level, it will continue to move upward to 5600 (upper Bollinger bands resistance level).

## Basic Industry Weekly Charts



S1	530	R1	565
S2	500	R2	605
S3	470	R3	645

### Comment:

The Basic industry index upward significant after rebounded at bullish support level. Trading range at 517-549.

By the first week of November 2016, The Index has forms the tweezers tops candlestick pattern. Reversal signal.

Stochastic dead-cross at overbought oscillator. Broad downside potential. RSI indicator showing bearish reversal momentum from overbought.

Medium term bullish movement.

This month stop loss level is around 520, If the index breaks through this stop-loss level, it will continue to 440 (MA50 level).

## HEAD OFFICE

### Reliance Building

Jl. Pluit Kencana No. 15A,  
Pluit Penjaringan  
Jakarta 14450  
T +62 21 661 7768  
F +62 21 661 9884

## RESEARCH DIVISION

### Jasa Adhi Mulya

*jasamulya@reliance-securities.com*

### Robertus Yanuar Hardy

*robertus@reliance-securities.com*

### Aji Setiawan

*aji@reliance-securities.com*

### Alan Milgerry

*alan@reliance-securities.com*

### Shanti Dwi Jayanti

*santi@reliance-securities.com*

### Lanjar Nafi Taulat I

*lanjar@reliance-securities.com*

Senior Analyst

Senior Analyst

Associate Analyst

Associate Analyst

Associate Analyst

Technical Analyst

## BRANCE OFFICE

### Jakarta- Pluit

Jl. Pluit Kencana No. 15A  
Pluit Penjaringan  
Jakarta 14450  
T +62 21 661 7768  
F +62 21 661 9884

### Bandung

Jl.Cisangkuy No.58  
Bandung 40115  
T +62 22 721 8200  
F +62 22 721 9255

### Surabaya - Gubeng

Jl. Bangka No. 22  
Surabaya 60281  
T +62 31 501 1128  
F +62 31 503 3196

### Makassar

Jl. Boto Lempangan No. 34 J  
Makassar 90113  
T +62 411 3632388  
F +62 411 3614634

### Jakarta - Sudirman

Menara Batavia 27th floor  
Jl. KH. Mas Mansyur Kav 126  
Jakarta 10220  
T +62 21 5790 5455  
F +62 21 5795 0728

### Tasikmalaya

Ruko Tasik Indah Plaza No.21  
Jl. KHZ Mustofa No. 345  
Tasikmalaya 46121  
T +62 265 345000  
F +62 265 345003

### Surabaya - Diponegoro

Jl. Diponegoro 26 D  
Surabaya 60264  
T +62 31 567 0388  
F +62 31 561 0528

### Pekanbaru

Jl. Sumatera No. 9, Simpang  
Empat, Pekanbaru - Riau  
28000  
T +62 761 7894368  
F +62 761 7894370

### Jakarta - Kebon Jeruk

Plaza Kebon Jeruk  
Jl.Raya Perjuangan Blok A/2  
Jakarta 11530  
T +62 21 532 4074  
F +62 21 536 2157

### Surakarta

Jl. Slamet Riyadi 330A  
Solo 57145  
T +62 271 736599  
F +62 271 733478

### Bali - Denpasar

Dewata Square Blok A3  
Jl. Letda Tantular Renon  
Denpasar 802361  
T +62 361 225099  
F +62 361 245099

### Medan

Jl. Teuku Amir Hamzah No.26  
T +62 61 6638592  
F +62 61 6638023

### BSD

Jl. Pahlawan Seribu Ruko BSD  
Sektor 7 Blok RK kav. 9  
Tangerang 15310  
T +62 21 5387495  
F +62 21 5387494

### Malang

Jl. Guntur No. 19  
Malang 65112  
T +62 341 347 611  
F +62 341 347 615

### Pontianak

Jl. MT Haryono No. 6  
Pontianak 78121  
T +62 561 575674  
F +62 561 575670

### Balikpapan

Ruko Bukit Damai Indah  
Blok I, No. 3, Rt.34  
Jl. MT. Haryono, Gunung  
Bahagia, Balikpapan Selatan  
76114  
T +62 542 746313-16  
F +62 542 746317

### Jakarta - Centro

Ruko Centro Residence Kav. 4-5  
Tower C Lt. 1 No. 26-29  
Jl. Macan, Daan Mogot  
Jakarta 14450  
T +62 21 56945227  
F +62 21 56945226

## IDX CORNER & INVESTMENT GALLERY

### President University

Resto Plaza 1F - Jababeka  
Education Park  
Jl. Ki Hajar Dewantara Raya  
Cikarang - Bekasi 17550  
T +62 21 89106030

### Universitas Siliwangi Tasikmalaya

Jl. Siliwangi No. 24  
Tasikmalaya 46151  
T +62 265 323685  
F +62 265 323534

### Universitas Muhammadiyah Sidoarjo

Jl. Majapahit 866B  
Sidoarjo, Jawa Timur  
T +62 31 8945444  
F +62 31 8949333

### Universitas Tanjungpura Pontianak

Jl. Jendral Ahmad Yani  
Pontianak 78124  
T +62 561 743465  
F +62 561 766840

### Universitas Islam Kalimantan FE UNISKA

Jl. Adiyaksa No. 2, Kayu Tangi  
Banjarmasin  
Tlp. 0511 3303871  
Fax. 0511 3303871

### STIE Tri Bhakti

Jl. Teuku Umar No. 24  
Cut Meutia, Bekasi  
Tlp. 021 82429400  
Fax. 021 82429500

### STIE "AUB" Surakarta

Jl. Mr. Sartono 97, Cengklik  
Nusukan, Surakarta 57135  
T +62 271 854803  
F +62 271 853084

### Universitas Surabaya

Jl. Raya Kalirungkt  
Surabaya 60293  
T +62 31 298 1203  
F +62 31 298 1204

### Universitas Muhammadiyah Gresik

Jl. Sumatra 101 GKB  
Gresik 61121  
T +62 31 395 1414  
F +62 31 395 2585

### Universitas Negeri Malang

Jl. Surabaya No. 6  
Malang 65145  
T +62 341 585914  
F +62 341 552888

### Universitas Muhammadiyah Malang

Jl. Raya Tlogomas 246  
Malang 65144  
T +62 341 464318-9  
F +62 341 460782

### STIE AAS Surakarta

Jalan Slamet Riyadi No 361  
Kartasura, Surakarta  
Telp. (0271) 726156  
Faks. (0271) 726156

### STIE Malangkececwara

Jl. Terusan Candi Kalasan  
Malang 65142  
T +62 341 491813  
F +62 341 495619

### STIESIA Surabaya

Jl. Menur Pumpungan 30  
Surabaya  
T +62 31 5947505  
F +62 31 5932218

### Universitas 17 Agustus 1945

Banyuwangi  
Jl. Adi Sucipto 26  
Banyuwangi, Jawa Timur  
T +62 333 419613  
F +62 333 419163

### Universitas Pesantren Tinggi Darul Ulum

Kompleks PP Darul Ulu,  
Peterongan  
Jombang, Jawa Timur 60281  
Telp. (0321) 873655  
Faks. (0321) 875771

### Politeknik Kediri

Jl. Mayor Bismo No. 27  
Kediri 64121  
T +62 354 683128  
F +62 354 683128

### Sekolah Tinggi Manajemen Informatika dan Teknik Komputer Bali

Jalan Puputan No. 86, Renon,  
Denpasar  
Telp. +62361 244445  
Faks. +62361 264773

### Universitas Muhammadiyah

Pontianak  
Fakultas Ekonomi UM  
Pontianak  
Jl. Ahmad Yani, No. 111,  
Pontianak 78124  
Telp. +62561 743465  
Faks. +62561 766840

### Universitas Negeri Makassar

Fakultas Ekonomi Gedung BT  
Lt.2  
Jl. A.P. Pettarani, Kampus  
UNM, Gunungsari Baru  
Makassar 90222  
T +62 411 889464 / 881244  
F +62 411 887604

### Disclaimer:

Information, opinions and recommendations contained in this document are presented by PT Reliance Securities Tbk. from sources that are considered reliable and dependable. This document is not an offer, invitation or any kind of representations to decide to buy or sell stock. Investment decisions taken based on this document is not the responsibility of PT Reliance Securities Tbk. PT Reliance Securities Tbk. reserves the right to change the contents of this document at any time without prior notice.