

Monday, November 21st 2016

Weekly IHSG



5170.11
-61.86
-1.18%

Weekly LQ-45



867.56
-10.75
-1.22%

Vol (Mn): 53.85
Val (Bn): 41.31
F Net B (Bn): (3,728)

Sector	Last	WoW Chg	(%)
Agriculture	1767.55	-30.36	-1.69%
Basic Industry	523.98	16.48	3.25%
Composite	5170.11	54.37	1.06%
Consumer	2324.30	-5.61	-0.24%
Finance	774.21	21.66	2.88%
Infrastructure	1045.77	34.04	3.36%
Manufacture	1351.06	12.29	0.92%
Mining	1318.68	-79.97	-5.72%
Misc Industry	1314.10	33.37	2.61%
Property	525.70	3.14	0.60%
Trade	830.94	-8.08	-0.96%

Source: Bloomberg

International	Last	WoW Chg	(%)
DJIA	18,867.93	20.27	0.11%
Nasdaq	5,321.51	84.40	1.61%
S&P 500	2,181.90	17.45	0.81%
FTSE 100	6,775.77	45.34	0.67%
Nikkei 225	17,967.41	592.62	3.41%
Hang Seng	22,344.21	-186.88	-0.83%
Sanghai Comp	3,192.9	-3.18	-0.10%

Source: Bloomberg

Exchange Rates	Last	WoW Chg	(%)
USD / IDR	13433	58.00	0.43%
US \$ Index	101.07	0.96	0.96%
EUR / USD	1.06	-0.01	-0.97%
USD / JPY	110.95	2.53	2.33%
GBP / USD	1.23	-0.02	-1.21%
USD / CNY	6.90	0.04	0.52%
AUD / USD	0.73	-0.02	-2.82%

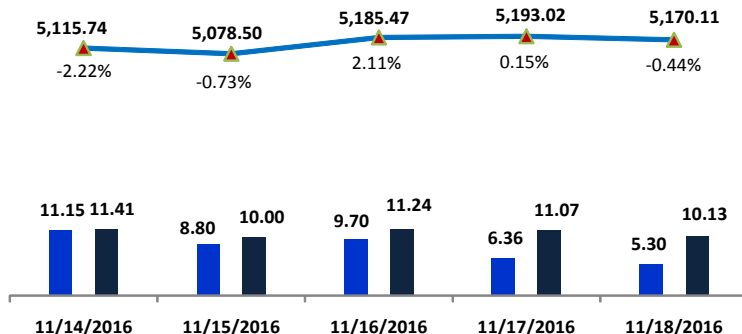
Others	Last	WoW Chg	(%)
S&P 500 Vlty (VIX)	12.85	-1.32	-9.32%
Baltic Dry	1,257.00	212.00	20.29%

Source: Bloomberg

Monday Recommendation Flashback

Stock	Rec.	11/11/2016 (close)	Stop Loss	Loss	Week's Highest	Date	Potential Gain	Week's Lowest	Date	Potential Gain
CPIN	TB	3,190	3,160	-0.94%	3,420	11/18/2016	7.21%	3,050	11/14/2016	-4.39%
TINS	PS	1,230	1,210	-1.63%	1,210	11/14/2016	-1.63%	985	11/16/2016	-19.92%
LSIP	H	1,565	1,560	-0.32%	1,660	11/17/2016	6.07%	1,545	11/16/2016	-1.28%
SIMP	SB	505	480	-4.95%	525	11/14/2016	3.96%	486	11/15/2016	-3.76%

IHSG on the Week (11/14/2016 - 11/18/2016)



	11/14/2016	11/15/2016	11/16/2016	11/17/2016	11/18/2016
LS-27 Close	854.92	849.07	870.05	870.71	867.56
LS-27 % Chg	-0.03	-0.01	0.02	0.00	0.00
Frgn Net Buy (Bn)	-1077.99	145.65	-56.05	-276.65	-2463.00
	-223.10	994.71	814.02	594.06	-1595.44

your **reliable** partner | 1

IHSG



S1	5175	R1	5280
S2	5100	R2	5400
S3	5000	R3	5540

Comment:

IHSG has consolidations movement MA7 resistance level after rebounded at Bullish trend line.

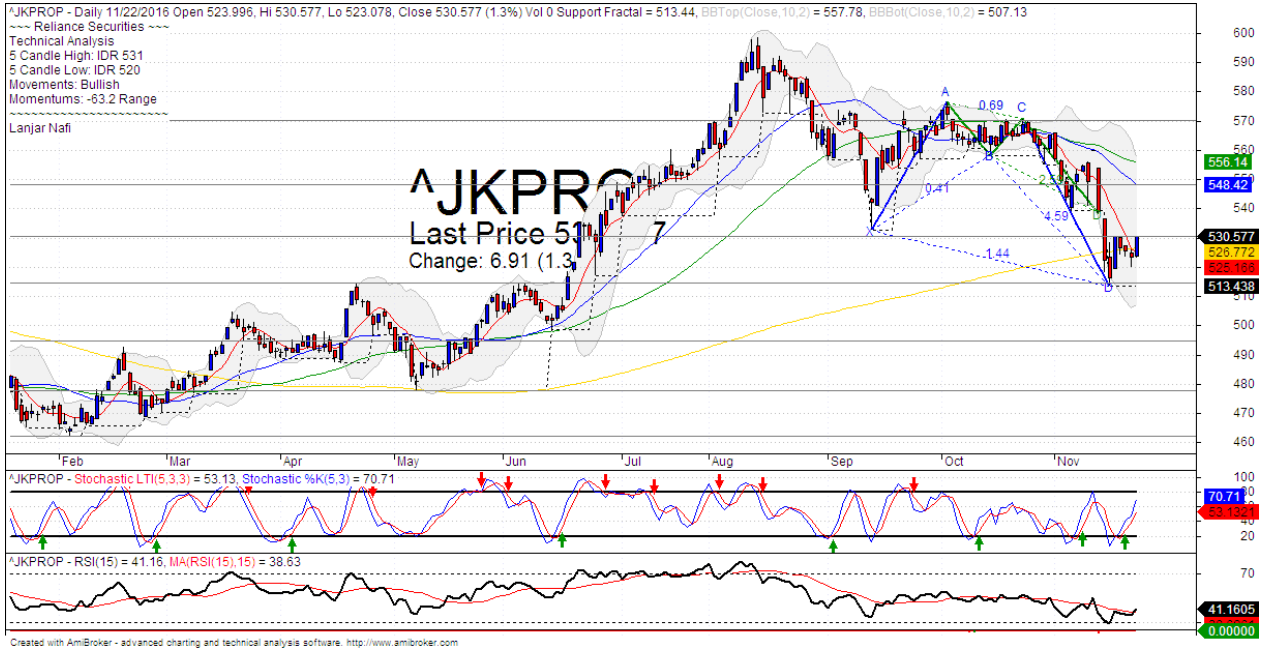
In the first season of the week. The index touching the broke the resistance MA7. It's a positive signal for rebound indications.

Stochastic bullish movement after golden-cross at oversold. Broad upside potential.

Medium and long term bullish trend movement.

This week resistance at 5230 (the closing gap target) with upside potential to 5365 (MA50 resistance level). Stop-loss level if broke out the MA200 support level at 5030.

Property Index



S1	515	R1	530
S2	495	R2	545
S3	475	R3	570

Comment:

Property index consolidations at MA200 after rebounded at lower Bollinger bands. Trading range 520–531.

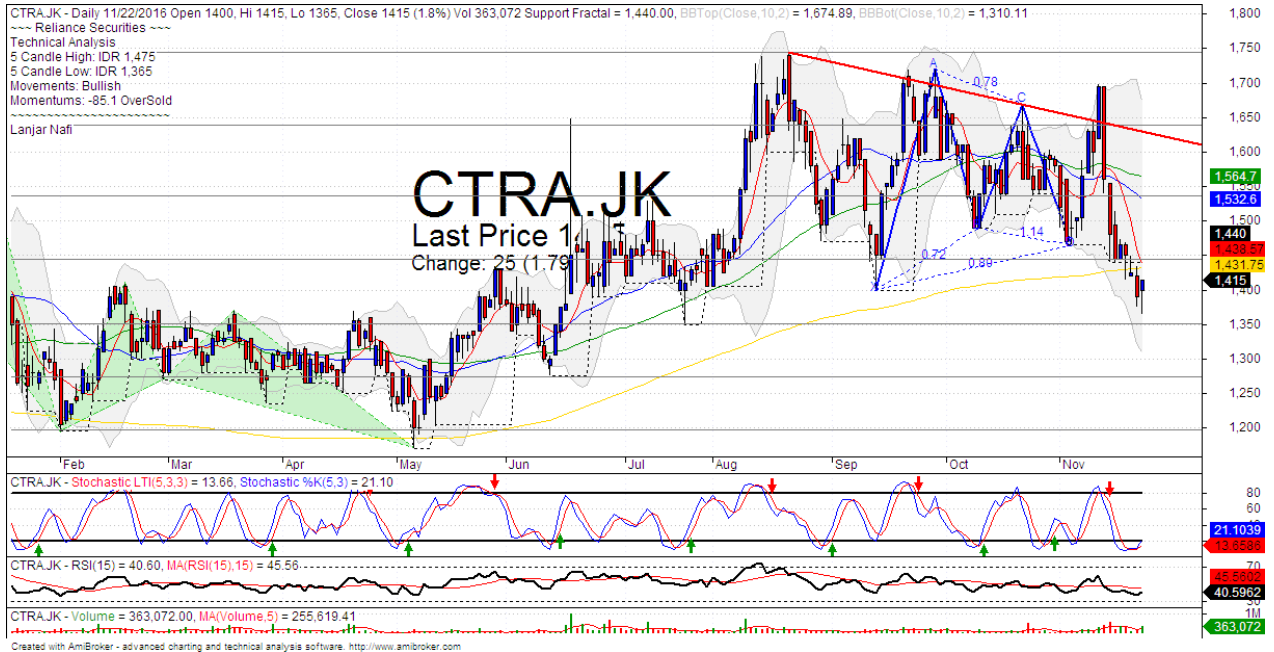
By the first session today, the index trying to whipsaw at MA200 support level and broke the MA7 resistance level.

Stochastic has bullish movement from oversold oscillator. Broad upside potential. RSI indicator broke the MA15 momentum and reversal indications signal.

Medium term bearish trend movement.

This week resistance at 530. Upside target to 545 (MA25 target level). Stop-loss position at 520 (Broke the MA200 support level).

CTRA



S1	1350	R1	1440
S2	1275	R2	1535
S3	1200	R3	1635

Comment:

CTRA has declined significant pulled back the bearish trend resistance level. Trading range 1365–1475.

By the first session this week, the price forming the bullish harami candlestick pattern. It's a positive signal fro rebound.

Stochastic golden-cross at oversold, broad upside potential. RSI has reversal momentum signal at oversold oscillator.

Medium term bearish trend movement.

Upside scenario: (Probability 70%)

If the price confirmations the rebound signal at 1435. Upside target to 1560 (MA50 target level).

Downside scenario: (Probability 30%)

Stop loss level at 1350 (Broke the fractal support level). Do a tight stop loss on this level. If a break down appeared, the price will potentially continue to 1275 (Support level).

HEAD OFFICE

Reliance Building

Jl. Pluit Sakti Raya No. 27AB,
Pluit
Jakarta 14450
T. +62 21 661 7768
F. +62 21 661 9884

RESEARCH DIVISION

Robertus Yanuar Hardy
robertus@reliance-securities.com
Lanjar Nafi Taulat I
lanjar@reliance-securities.com
Aji Setiawan
aji@reliance-securities.com
Shanti Dwi Jayanti
santi@reliance-securities.com

Senior Analyst
Technical Research Analyst
Associate Research Analyst
Associate Research Analyst

EQUITY DIVISION

Jakarta- Pluit

Jl. Pluit Sakti Raya No. 27AB,
Pluit
Jakarta 14450
T. +62 21 661 7768
F. +62 21 661 9884

Bandung

Jl.Cisangkuy No.58
Bandung 40115
T. +62 22 721 8200
F. +62 22 721 9255

Surabaya - Gubeng

Jl. Bangka No. 22
Surabaya 60281
T. +62 31 501 1128
F. +62 31 503 3196

Makassar

Jl. Boto Lempangan No. 34 J
Makassar- Sulawesi Selatan
T. +62 411 3632388
F. +62 411 3614634

Jakarta - Sudirman

Menara Batavia 27th floor
Jl. KH. Mas Mansyur Kav 126
Jakarta 10220
T. +62 21 5793 0008
F. +62 21 5793 0010

Tasikmalaya

Ruko Tasik Indah Plaza No.21
Jl. KHZ Mustofa No. 345
Tasikmalaya 46121
T. +62 265 345000
F. +62 265 345003

Surabaya - Diponegoro

Jl. Diponegoro No.26D
Surabaya 60261
T. +62 31 567 0388
F. +62 31 561 0528

Medan

Jl. Teuku Amir Hamzah No.40-O
Medan 20117
T. +62 61 6638592
F. +62 61 6638023

Jakarta - Kebon Jeruk

Plaza Kebon Jeruk
Jl.Raya Perjuangan Blok A/2
Jakarta 11530
T. +62 21 532 4074
F. +62 21 536 2157

Malang

Jl. Guntur No. 19
Malang 65112
T. +62 341 347 611
F. +62 341 347 615

Bali - Denpasar

Dewata Square Blok A3
Jl. Letda Tantular Renon
Denpasar 802361
T. +62 361 225099
F. +62 361 245099

Tangerang

Jl. Pahlawan Seribu Ruko BSD
Sektor 7 Blok RK kav. 9
Tangerang 15310
T. +62 21 5387495
F. +62 21 5387494

Pekanbaru

Jl. Jendral Sudirman No.73
Pekanbaru-Riau
T. +62 761 848414
F. +62 761 849456

Pontianak

Jl. MT Haryono No. 6
Pontianak 78121
T. +62 561 575674
F. +62 561 575670

Jakarta - Centro

Ruko Centro Residence Kav. 4-5
Tower C Lt. 1 No. 26-29
Jl. Macan, Daan Mogot
Jakarta 14450
T. +62 21 56945227
F. +62 21 56945226

Solo

Jl. Slamet Riyadi 330^a
Solo 57145
T. +62 271 736599
F. +62 271 733478

Balikpapan

Ruko Bukit Damai Indah
Blok I, No. 3, Rt.34
Jl. MT. Haryono, Gunung
Bahagia, Balikpapan Selatan
76114
T. +62 542 746313
F. +62 542 746317

IDX CORNER & INVESTMENT GALLERY

President University

Resto Plaza 1F - Jababeka
Education Park
Jl. Ki Hajar Dewantara Raya
Cikarang - Bekasi 17550
T. +62 21 89106030

Universitas Siliwangi Tasikmalaya

Jl. Siliwangi No. 24
Tasikmalaya 46151
T. +62 265 323685
F. +62 265 323534

Politeknik Kediri

Jl. Mayor Bismo No. 27
Kediri 64121
T. +62 354 683128
F. +62 354 683128

Universitas Muhammadiyah Sidoarjo

Jl. Majapahit 666 B
Sidoarjo, Jawa Timur
T. +62 31 8945444
F. +62 31 8949333

Universitas Tanjungpura Pontianak

Jl. Jendral Ahmad Yani
Pontianak 78124
T. +62 561 743465
F. +62 561 766840

Universitas Pesantren Tinggi Darul Ulum

Kompleks Pp Darul Ulu,
Peterongan
Jombang, Jawa Timur 60281
T. +62 321 873655
F. +62 321 875771

STIE "AUB" Surakarta

Jl. Mr. Sartono 97, Cengklik
Nusukan, Surakarta 57135
T. +62 271 854803
F. +62 271 853084

Universitas Surabaya

Jl. Raya Kalirungkut
Surabaya 60293
T. +62 31 298 1203
F. +62 31 298 1204

Universitas Muhammadiyah Gresik

Jl. Sumatra 101 GKB
Gresik 61121
T. +62 31 395 1414
F. +62 31 395 2585

Universitas Negeri Malang

Jl. Surabaya No. 6
Malang 65145
T. +62 341 585914
F. +62 341 55288

Universitas Muhammadiyah Malang

Jl. Raya Tlogomas 246
Malang 65144
T. +62 341 464318-9
F. +62 341 460782

FSEI IAIN Antasari

Jl. Ahmad Yani Km. 4,5
Banjarmasin
T. + 62 511 3265783

STIE Malangkececwara

Jl. Terusan Candi Kalasan
Malang 65142
T. +62 341 491813
F. +62 341 495619

STIESIA Surabaya

Jl. Menur Pumpungan 30
Surabaya
T. +62 31 5947505
F. +62 31 5932218

Universitas 17 Agustus 1945 Banyuwangi

Jl. Adi Sucipto 26
Banyuwangi, Jawa Timur
T. +62 333 419613
F. +62 333 419163

STIE Tri Bhakti

Jl. Teuku Umar No. 24
Cut Meutia Setiakawan,
Bekasi
T. +62 21 82429400,
82429500
F. +62 271 726156

Universitas Islam Kalimantan

Jl. Adiyaksa No. 2, Kayu
Tangi, Banjarmasin
T. + 62 511 3303871
F. + 62 511 3303871

STIKOM Bali

Jalan Puputan No. 86, Renon,
Denpasar
T. +62361 244445
F. +62361 264773

Universitas Muhammadiyah Pontianak

Fakultas Ekonomi UM
Pontianak
Jl. Ahmad Yani, No. 111,
Pontianak 78124
T. +62561 743465
F. +62561 766840

Universitas Negeri Makassar

Fakultas Ekonomi Gedung BT
Lt.2
Jl. A.P. Pettarani, Kampus
UNM, Gunungsari Baru
Makassar 90222
T. +62 411 889464 / 881244
F. +62 411 887604

STIE AAS Surakarta

Jl. Slamet Riyadi No. 361,
Kartasura, Surakarta
T. +62 271 726156
F. +62 271 726156

UPN "Veteran" Yogyakarta

Jl. Babarsari 2, Tambak Bayan
Yogyakarta
T. +62 274 485268
F. +62 274 487147

Disclaimer:

Information, opinions and recommendations contained in this document are presented by PT Reliance Securities Tbk. from sources that are considered reliable and dependable. This document is not an offer, invitation or any kind of representations to decide to buy or sell stock. Investment decisions taken based on this document is not the responsibility of PT Reliance Securities Tbk. PT Reliance Securities Tbk. reserves the right to change the contents of this document at any time without prior notice.