

Monday, November 28th 2016

Weekly IHSG



5122.10
-48.01
-0.93%

Weekly LQ-45



853.84
-13.72
-1.58%

Vol (Mn): 62.14
Val (Bn): 34.95
F Net B (Bn): (3,728)

International	Last	WoW Chg	(%)
DJIA	19,152.14	284.21	1.51%
Nasdaq	5,398.92	77.41	1.45%
S&P 500	2,213.35	31.45	1.44%
FTSE 100	6,840.75	64.98	0.96%
Nikkei 225	18,381.22	413.81	2.30%
Hang Seng	22,723.45	379.24	1.70%
Sanghai Comp	3,261.9	69.08	2.16%

Source: Bloomberg

Sector	Last	WoW Chg	(%)
Agriculture	1830.74	63.19	3.58%
Basic Industry	524.42	0.44	0.08%
Composite	5122.10	-48.01	-0.93%
Consumer	2322.15	-2.15	-0.09%
Finance	750.04	-24.17	-3.12%
Infrastructure	1026.18	-19.59	-1.87%
Manufacture	1344.35	-6.71	-0.50%
Mining	1395.97	77.29	5.86%
Misc Industry	1281.57	-32.53	-2.48%
Property	522.78	-2.92	-0.56%
Trade	826.55	-4.39	-0.53%

Source: Bloomberg

Exchange Rates	Last	WoW Chg	(%)
USD / IDR	13551	118.00	0.88%
US \$ Index	101.34	0.27	0.27%
EUR / USD	1.06	0.00	-0.35%
USD / JPY	112.14	1.19	1.07%
GBP / USD	1.24	0.01	0.45%
USD / CNY	6.89	0.00	-0.06%
AUD / USD	0.75	0.01	1.85%

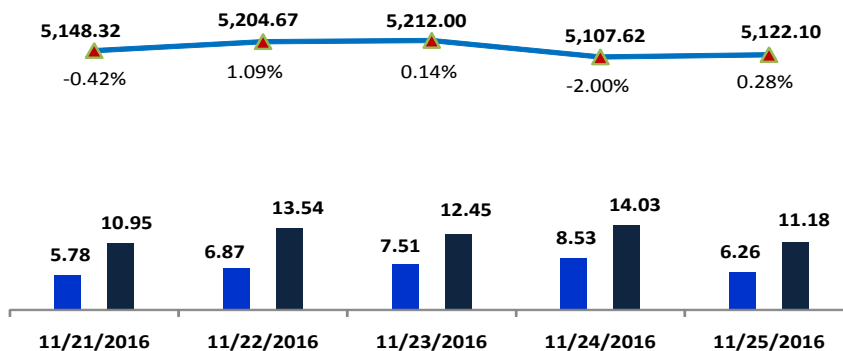
Others	Last	WoW Chg	(%)
S&P 500 Vlty (VIX)	13.15	0.30	2.33%
Baltic Dry	1,184.00	-73.00	-5.81%

Source: Bloomberg

Monday Recommendation Flashback

Stock	Rec.	11/18/2016 (close)	Stop Loss	Loss	Week's Highest	Date	Potential Gain	Week's Lowest	Date	Potential Gain
LSIP	PS	1,600	1,560	-2.50%	1,775	11/25/2016	10.94%	1,585	11/21/2016	-0.94%
CTRA	TB	1,425	1,350	-5.26%	1,440	11/24/2016	1.05%	1,365	11/22/2016	-4.21%
UNVR	TB	40,250	39,100	-2.86%	40,600	11/23/2016	0.87%	39,775	11/23/2016	-1.18%
MDLN	TB	346	330	-4.62%	350	11/21/2016	1.16%	330	11/24/2016	-4.62%

IHSG on the Week (11/21/2016 - 11/25/2016)



LS-27 Close	862.04	870.91	873.22	851.49	853.84
LS-27 % Chg	-0.01	0.01	0.00	-0.02	0.00
Frgn Net Buy (Bn)	-1077.99	145.65	-56.05	-276.65	-2463.00
	-215.96	1016.57	817.17	574.82	-1609.16

your **reliable** partner | 1

IHSG



S1	5100	R1	5175
S2	5000	R2	5280
S3	4920	R3	5400

Comment:

IHSG consolidations at bullish trend line support level. Trading range at 5092–5212.

In the first season of the week. The index rebounded confirmations at bullish trend support level.

Stochastic bullish movement after golden-cross at oversold. Broad upside potential. RSI indicator has consolidation momentum at near oversold.

Medium and long term bullish trend movement.

This week resistance at 5230 (the closing gap target) with upside potential to 5335 (MA50 resistance level). Stop-loss level if broke out the MA200 support level at 5050.

Finance Index



S1	735	R1	765
S2	710	R2	808
S3	685	R3	840

Comment:

Finance index declined significant after pulled back the MA7 resistance level last week. Trading range 739–774.

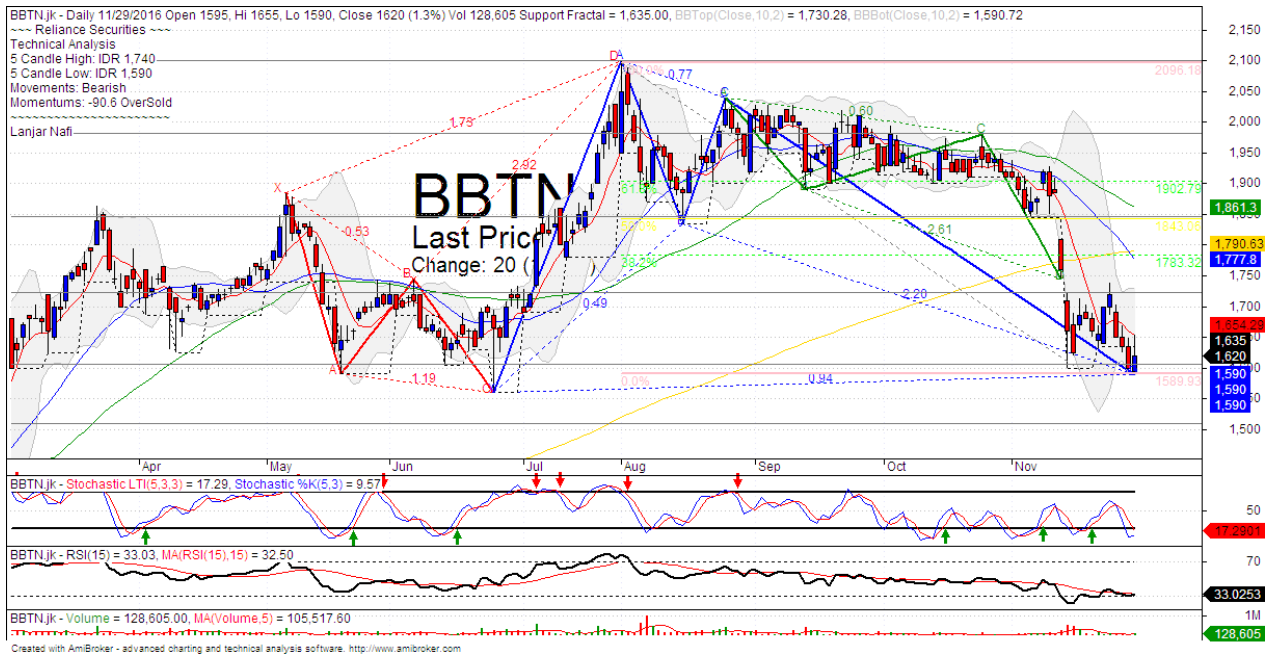
By the first session today, the index forming the piercing line candlestick pattern. Huge trading volume and forms the double bottom pattern.

Stochastic, golden-cross indications at oversold oscillator. Broad upside potential. RSI indicator trying to reversal momentum at oversold oscillator.

Long term bullish trend movement.

This week resistance level at 757 (MA7 resistance level). Stop-loss level at 720 (Break out the MA200 support level). Upside target if rebound confirmations to 797 (MA50 resistance level).

BBTN



S1	1350	R1	1440
S2	1275	R2	1535
S3	1200	R3	1635

Comment:

BBTN has declined significant pulled back the resistance level. Trading range 1590–1740.

By the first session this week, the price forming the bullish harami candlestick pattern. It's a positive signal for rebound.

Stochastic golden-cross at oversold, broad upside potential. RSI has reversal momentum signal at oversold oscillator.

Medium term bearish trend movement.

Upside scenario: (Probability 70%)

If the price confirmations the rebound signal at 1635. Upside target to 1790 (MA200 target level).

Downside scenario: (Probability 30%)

Stop loss level at 1570 (Broke the support level). Do a tight stop loss on this level. If a break down appeared, the price will potentially continue to 1500 (Support level).

HEAD OFFICE

Reliance Building

Jl. Pluit Sakti Raya No. 27AB,
Pluit
Jakarta 14450
T. +62 21 661 7768
F. +62 21 661 9884

RESEARCH DIVISION

Robertus Yanuar Hardy
robertus@reliance-securities.com
Lanjar Nafi Taulat I
lanjar@reliance-securities.com
Aji Setiawan
aji@reliance-securities.com
Shanti Dwi Jayanti
santi@reliance-securities.com

Senior Analyst
Technical Research Analyst
Associate Research Analyst
Associate Research Analyst

EQUITY DIVISION

Jakarta- Pluit

Jl. Pluit Sakti Raya No. 27AB,
Pluit
Jakarta 14450
T. +62 21 661 7768
F. +62 21 661 9884

Bandung

Jl.Cisangkuy No.58
Bandung 40115
T. +62 22 721 8200
F. +62 22 721 9255

Surabaya - Gubeng

Jl. Bangka No. 22
Surabaya 60281
T. +62 31 501 1128
F. +62 31 503 3196

Makassar

Jl. Boto Lempangan No. 34 J
Makassar- Sulawesi Selatan
T. +62 411 3632388
F. +62 411 3614634

Jakarta - Sudirman

Menara Batavia 27th floor
Jl. KH. Mas Mansyur Kav 126
Jakarta 10220
T. +62 21 5793 0008
F. +62 21 5793 0010

Tasikmalaya

Ruko Tasik Indah Plaza No.21
Jl. KHZ Mustofa No. 345
Tasikmalaya 46121
T. +62 265 345000
F. +62 265 345003

Surabaya - Diponegoro

Jl. Diponegoro No.26D
Surabaya 60261
T. +62 31 567 0388
F. +62 31 561 0528

Medan

Jl. Teuku Amir Hamzah No.40-O
Medan 20117
T. +62 61 6638592
F. +62 61 6638023

Jakarta - Kebon Jeruk

Plaza Kebon Jeruk
Jl.Raya Perjuangan Blok A/2
Jakarta 11530
T. +62 21 532 4074
F. +62 21 536 2157

Malang

Jl. Guntur No. 19
Malang 65112
T. +62 341 347 611
F. +62 341 347 615

Bali - Denpasar

Dewata Square Blok A3
Jl. Letda Tantular Renon
Denpasar 802361
T. +62 361 225099
F. +62 361 245099

Tangerang

Jl. Pahlawan Seribu Ruko BSD
Sektor 7 Blok RK kav. 9
Tangerang 15310
T. +62 21 5387495
F. +62 21 5387494

Pekanbaru

Jl. Jendral Sudirman No.73
Pekanbaru-Riau
T. +62 761 848414
F. +62 761 849456

Pontianak

Jl. MT Haryono No. 6
Pontianak 78121
T. +62 561 575674
F. +62 561 575670

Jakarta - Centro

Ruko Centro Residence Kav. 4-5
Tower C Lt. 1 No. 26-29
Jl. Macan, Daan Mogot
Jakarta 14450
T. +62 21 56945227
F. +62 21 56945226

Solo

Jl. Slamet Riyadi 330^a
Solo 57145
T. +62 271 736599
F. +62 271 733478

Balikpapan

Ruko Bukit Damai Indah
Blok I, No. 3, Rt.34
Jl. MT. Haryono, Gunung
Bahagia, Balikpapan Selatan
76114
T. +62 542 746313
F. +62 542 746317

IDX CORNER & INVESTMENT GALLERY

President University
Resto Plaza 1F - Jababeka
Education Park
Jl. Ki Hajar Dewantara Raya
Cikarang - Bekasi 17550
T. +62 21 89106030

**Universitas Siliwangi
Tasikmalaya**
Jl. Siliwangi No. 24
Tasikmalaya 46151
T. +62 265 323685
F. +62 265 323534

Politeknik Kediri
Jl. Mayor Bismo No. 27
Kediri 64121
T. +62 354 683128
F. +62 354 683128

**Universitas Muhammadiyah
Sidoarjo**
Jl. Majapahit 666 B
Sidoarjo, Jawa Timur
T. +62 31 8945444
F. +62 31 8949333

**Universitas Tanjungpura
Pontianak**
Jl. Jendral Ahmad Yani
Pontianak 78124
T. +62 561 743465
F. +62 561 766840

**Universitas Pesantren Tinggi
Darul Ulum**
Kompleks Pp Darul Ulu,
Peterongan
Jombang, Jawa Timur 60281
T. +62 321 873655
F. +62 321 875771

STIE "AUB" Surakarta
Jl. Mr. Sartono 97, Cengklik
Nusukan, Surakarta 57135
T. +62 271 854803
F. +62 271 853084

Universitas Surabaya
Jl. Raya Kalirungkut
Surabaya 60293
T. +62 31 298 1203
F. +62 31 298 1204

**Universitas Muhammadiyah
Gresik**
Jl. Sumatra 101 GKB
Gresik 61121
T. +62 31 395 1414
F. +62 31 395 2585

Universitas Negeri Malang
Jl. Surabaya No. 6
Malang 65145
T. +62 341 585914
F. +62 341 55288

**Universitas Muhammadiyah
Malang**
Jl. Raya Tlogomas 246
Malang 65144
T. +62 341 464318-9
F. +62 341 460782

FSEI IAIN Antasari
Jl. Ahmad Yani Km. 4,5
Banjarmasin
T. + 62 511 3265783

STIE Malangkececwara
Jl. Terusan Candi Kalasan
Malang 65142
T. +62 341 491813
F. +62 341 495619

STIESIA Surabaya
Jl. Menur Pumpungan 30
Surabaya
T. +62 31 5947505
F. +62 31 5932218

**Universitas 17 Agustus
1945 Banyuwangi**
Jl. Adi Sucipto 26
Banyuwangi, Jawa Timur
T. +62 333 419613
F. +62 333 419163

STIE Tri Bhakti
Jl. Teuku Umar No. 24
Cut Meutia Setiakawan,
Bekasi
T. +62 21 82429400,
82429500
F. +62 271 726156

**Universitas Islam
Kalimantan**
Jl. Adiyaksa No. 2, Kayu
Tangi, Banjarmasin
T. + 62 511 3303871
F. + 62 511 3303871

STIKOM Bali
Jalan Puputan No. 86, Renon,
Denpasar
T. +62361 244445
F. +62361 264773

**Universitas Muhammadiyah
Pontianak**
Fakultas Ekonomi UM
Pontianak
Jl. Ahmad Yani, No. 111,
Pontianak 78124
T. +62561 743465
F. +62561 766840

**Universitas Negeri
Makassar**
Fakultas Ekonomi Gedung BT
Lt.2
Jl. A.P. Pettarani, Kampus
UNM, Gunungsari Baru
Makassar 90222
T. +62 411 889464 / 881244
F. +62 411 887604

STIE AAS Surakarta
Jl. Slamet Riyadi No. 361,
Kartasura, Surakarta
T. +62 271 726156
F. +62 271 726156

UPN "Veteran" Yogyakarta
Jl. Babarsari 2, Tambak Bayan
Yogyakarta
T. +62 274 485268
F. +62 274 487147

Disclaimer:

Information, opinions and recommendations contained in this document are presented by PT Reliance Securities Tbk. from sources that are considered reliable and dependable. This document is not an offer, invitation or any kind of representations to decide to buy or sell stock. Investment decisions taken based on this document is not the responsibility of PT Reliance Securities Tbk. PT Reliance Securities Tbk. reserves the right to change the contents of this document at any time without prior notice.