

Monday, December 05th 2016

Weekly IHSG



5245.96
123.86
2.42%

Vol (Mn): 79.35
Val (Bn): 41.41
F Net B (Bn): (3,203)

Weekly LQ-45



880.57
26.73
3.13%

International	Last	WoW Chg	(%)
DJIA	19,170.42	18.28	0.10%
Nasdaq	5,255.65	-143.27	-2.65%
S&P 500	2,191.95	-21.40	-0.97%
FTSE 100	6,730.72	-110.03	-1.61%
Nikkei 225	18,426.08	44.86	0.24%
Hang Seng	22,564.82	-158.63	-0.70%
Sanghai Comp	3,243.8	-18.10	-0.55%

Source: Bloomberg

Sector	Last	WoW Chg	(%)
Agriculture	1857.81	27.07	1.48%
Basic Industry	538.95	14.53	2.77%
Composite	5122.10	0.00	0.00%
Consumer	2381.70	59.55	2.56%
Finance	770.09	20.05	2.67%
Infrastructure	1049.96	23.78	2.32%
Manufacture	1379.24	34.89	2.60%
Mining	1422.51	26.54	1.90%
Misc Industry	1313.87	32.30	2.52%
Property	532.57	9.79	1.87%
Trade	844.81	18.26	2.21%

Source: Bloomberg

Exchange Rates	Last	WoW Chg	(%)
USD / IDR	13409	-142.00	-1.05%
US \$ Index	100.09	-1.25	-1.23%
EUR / USD	1.08	0.02	1.59%
USD / JPY	113.64	1.50	1.34%
GBP / USD	1.27	0.04	2.83%
USD / CNY	6.87	-0.03	-0.37%
AUD / USD	0.75	0.00	-0.33%

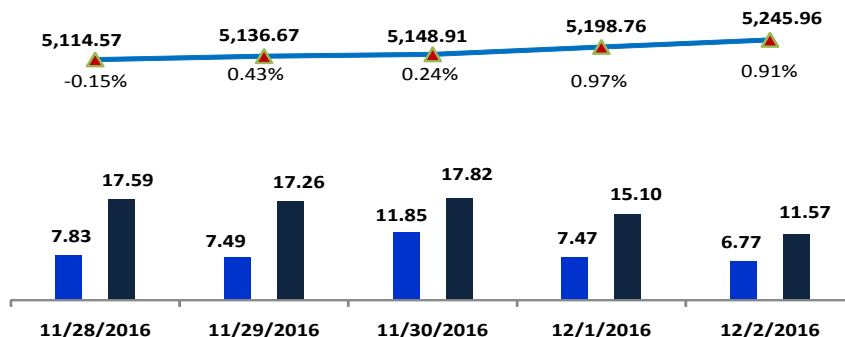
Others	Last	WoW Chg	(%)
S&P 500 Vlty (VIX)	12.14	-1.01	-7.68%
Baltic Dry	1,196.00	12.00	1.01%

Source: Bloomberg

Monday Recommendation Flashback

Stock	Rec.	11/25/2016 (close)	Stop Loss	Loss	Week's Highest	Date	Potential Gain	Week's Lowest	Date	Potential Gain
AALI	PS	16,625	16,400	-1.35%	17,475	12/2/2016	5.11%	16,350	11/28/2016	-1.65%
TBLA	SB	975	950	-2.56%	995	11/28/2016	2.05%	925	11/30/2016	-5.13%
ASII	SB	7,625	7,350	-3.61%	7,975	11/29/2016	4.59%	7,550	11/30/2016	-0.98%
LSIP	PS	1,745	1,535	-12.03%	1,840	12/1/2016	5.44%	1,710	11/28/2016	-2.01%

IHSG on the Week (11/28/2016 - 12/2/2016)



LS-27 Close	852.24	856.11	857.00	869.69	880.57
LS-27 % Chg	0.00	0.00	0.00	0.01	0.01
Frgn Net Buy (Bn)	-829.67	-852.58	-1063.00	-181.27	-276.04
	22.57	3.53	-206.00	688.43	604.54

your **reliable** partner | 1

IHSG



S1	5175	R1	5280
S2	5100	R2	5400
S3	5000	R3	5545

Comment:

IHSG surged significant after rebounded at bullish trend line last week. Trading range at 5168–5289.

In the first season of the week. The index reached the MA25 resistance level and trying to broke the MA50 resistance level.

Stochastic reached the overbought with dead-cross indications. RSI indicator has consolidation momentum at middle oscillator.

Long term bullish trend movement.

This week resistance at 5325 (MA50 target) with upside potential to 5400. Stop-loss level if pulled back MA50 at 5200.

Infrastructure Index



S1	1045	R1	1100
S2	1000	R2	1150
S3	965	R3	1200

Comment:

Infrastructure index surged significant until reached the bearish trend line resistance level. Trading range 1037–1066.

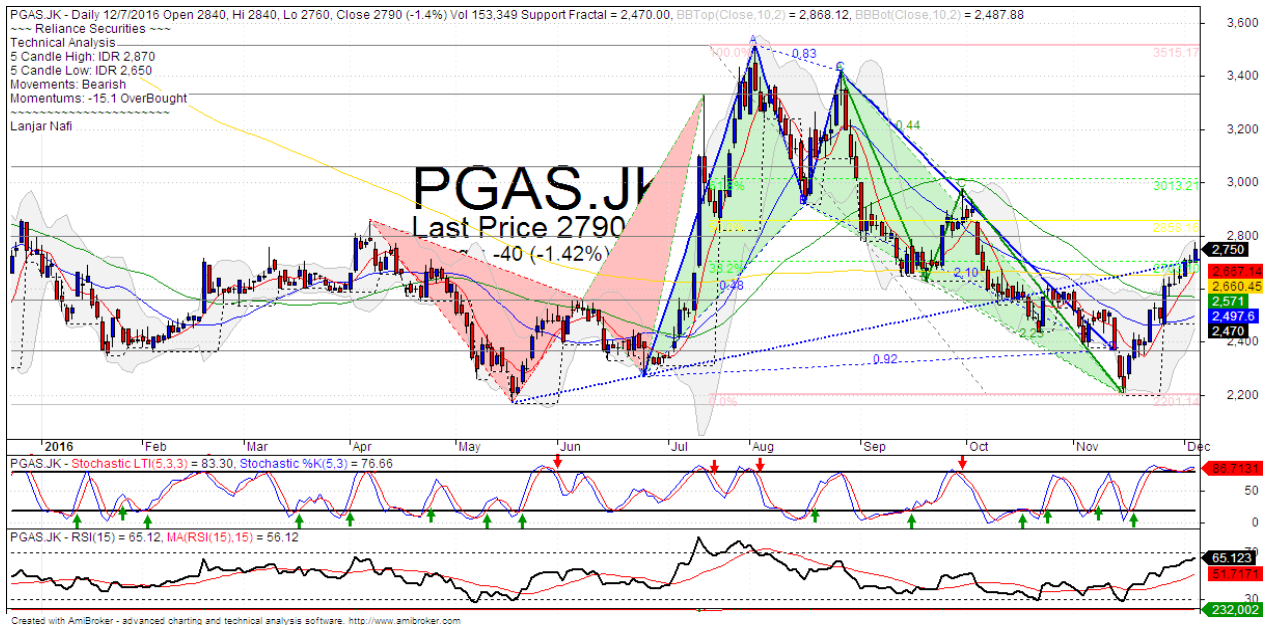
By the first session today, the index trying broke the bearish trend line and MA200 resistance level.

Stochastic has bullish movement and reached the overbought oscillator. RSI indicator has bullish momentum at middle oscillator.

Long term bearish trend movement.

This week resistance at 1070 (bearish trend line resistance level). Stop-loss position if pulled back the bearish trend line until under MA25 at 1050. Downside potential to 1010 (Lower Bollinger bands).

PGAS



S1	2560	R1	2800
S2	2360	R2	3050
S3	2160	R3	3330

Comment:

PGAS has Surged significant after broke the MA50 resistance level and forming bullish butterfly harmonic pattern. Trading range 2650–2870.

By the first session this week, the price reached the first target from bullish butterfly harmonic pattern at 38.2%. It's a distributions signal.

Stochastic dead-cross at overbought, broad upside potential. RSI has bearish reversal momentum signal at overbought oscillator.

Short term bullish trend movement.

Upside scenario: (Probability 30%)

If the price broke the resistance level at 2830 Upside target to 3010 (Second target from bullish butterfly harmonic pattern).

Downside scenario: (Probability 70%)

Stop loss level at 2630 (Broke the MA200 support level). Do a tight stop loss on this level. If a break down appeared, the price will potentially continue to 2370 (Support level).

HEAD OFFICE

Reliance Building

Jl. Pluit Sakti Raya No. 27AB,
Pluit
Jakarta 14450
T. +62 21 661 7768
F. +62 21 661 9884

RESEARCH DIVISION

Robertus Yanuar Hardy
robertus@reliance-securities.com
Lanjar Nafi Taulat I
lanjar@reliance-securities.com
Aji Setiawan
aji@reliance-securities.com
Shanti Dwi Jayanti
santi@reliance-securities.com

Senior Analyst
Technical Research Analyst
Associate Research Analyst
Associate Research Analyst

EQUITY DIVISION

Jakarta- Pluit

Jl. Pluit Sakti Raya No. 27AB,
Pluit
Jakarta 14450
T. +62 21 661 7768
F. +62 21 661 9884

Bandung

Jl.Cisangkuy No.58
Bandung 40115
T. +62 22 721 8200
F. +62 22 721 9255

Surabaya - Gubeng

Jl. Bangka No. 22
Surabaya 60281
T. +62 31 501 1128
F. +62 31 503 3196

Makassar

Jl. Boto Lempangan No. 34 J
Makassar- Sulawesi Selatan
T. +62 411 3632388
F. +62 411 3614634

Jakarta - Sudirman

Menara Batavia 27th floor
Jl. KH. Mas Mansyur Kav 126
Jakarta 10220
T. +62 21 5793 0008
F. +62 21 5793 0010

Tasikmalaya

Ruko Tasik Indah Plaza No.21
Jl. KHZ Mustofa No. 345
Tasikmalaya 46121
T. +62 265 345000
F. +62 265 345003

Surabaya - Diponegoro

Jl. Diponegoro No.26D
Surabaya 60261
T. +62 31 567 0388
F. +62 31 561 0528

Medan

Jl. Teuku Amir Hamzah No.40-O
Medan 20117
T. +62 61 6638592
F. +62 61 6638023

Jakarta - Kebon Jeruk

Plaza Kebon Jeruk
Jl.Raya Perjuangan Blok A/2
Jakarta 11530
T. +62 21 532 4074
F. +62 21 536 2157

Malang

Jl. Guntur No. 19
Malang 65112
T. +62 341 347 611
F. +62 341 347 615

Bali - Denpasar

Dewata Square Blok A3
Jl. Letda Tantular Renon
Denpasar 802361
T. +62 361 225099
F. +62 361 245099

Tangerang

Jl. Pahlawan Seribu Ruko BSD
Sektor 7 Blok RK kav. 9
Tangerang 15310
T. +62 21 5387495
F. +62 21 5387494

Pekanbaru

Jl. Jendral Sudirman No.73
Pekanbaru-Riau
T. +62 761 848414
F. +62 761 849456

Pontianak

Jl. MT Haryono No. 6
Pontianak 78121
T. +62 561 575674
F. +62 561 575670

Jakarta - Centro

Ruko Centro Residence Kav. 4-5
Tower C Lt. 1 No. 26-29
Jl. Macan, Daan Mogot
Jakarta 14450
T. +62 21 56945227
F. +62 21 56945226

Solo

Jl. Slamet Riyadi 330^a
Solo 57145
T. +62 271 736599
F. +62 271 733478

Balikpapan

Ruko Bukit Damai Indah
Blok I, No. 3, Rt.34
Jl. MT. Haryono, Gunung
Bahagia, Balikpapan Selatan
76114
T. +62 542 746313
F. +62 542 746317

IDX CORNER & INVESTMENT GALLERY

President University

Resto Plaza 1F - Jababeka
Education Park
Jl. Ki Hajar Dewantara Raya
Cikarang - Bekasi 17550
T. +62 21 89106030

Universitas Siliwangi Tasikmalaya

Jl. Siliwangi No. 24
Tasikmalaya 46151
T. +62 265 323685
F. +62 265 323534

Politeknik Kediri

Jl. Mayor Bismo No. 27
Kediri 64121
T. +62 354 683128
F. +62 354 683128

Universitas Muhammadiyah Sidoarjo

Jl. Majapahit 666 B
Sidoarjo, Jawa Timur
T. +62 31 8945444
F. +62 31 8949333

Universitas Tanjungpura Pontianak

Jl. Jendral Ahmad Yani
Pontianak 78124
T. +62 561 743465
F. +62 561 766840

Universitas Pesantren Tinggi Darul Ulum

Kompleks Pp Darul Ulu,
Peterongan
Jombang, Jawa Timur 60281
T. +62 321 873655
F. +62 321 875771

STIE "AUB" Surakarta

Jl. Mr. Sartono 97, Cengklik
Nusukan, Surakarta 57135
T. +62 271 854803
F. +62 271 853084

Universitas Surabaya

Jl. Raya Kalirungkut
Surabaya 60293
T. +62 31 298 1203
F. +62 31 298 1204

Universitas Muhammadiyah Gresik

Jl. Sumatra 101 GKB
Gresik 61121
T. +62 31 395 1414
F. +62 31 395 2585

Universitas Negeri Malang

Jl. Surabaya No. 6
Malang 65145
T. +62 341 585914
F. +62 341 55288

Universitas Muhammadiyah Malang

Jl. Raya Tlogomas 246
Malang 65144
T. +62 341 464318-9
F. +62 341 460782

FSEI IAIN Antasari

Jl. Ahmad Yani Km. 4,5
Banjarmasin
T. + 62 511 3265783

STIE Malangkececwara

Jl. Terusan Candi Kalasan
Malang 65142
T. +62 341 491813
F. +62 341 495619

STIESIA Surabaya

Jl. Menur Pumpungan 30
Surabaya
T. +62 31 5947505
F. +62 31 5932218

Universitas 17 Agustus 1945 Banyuwangi

Jl. Adi Sucipto 26
Banyuwangi, Jawa Timur
T. +62 333 419613
F. +62 333 419163

STIE Tri Bhakti

Jl. Teuku Umar No. 24
Cut Meutia Setiakawan,
Bekasi
T. +62 21 82429400,
82429500
F. +62 271 726156

Universitas Islam Kalimantan

Jl. Adiyaksa No. 2, Kayu
Tangi, Banjarmasin
T. + 62 511 3303871
F. + 62 511 3303871

STIKOM Bali

Jalan Puputan No. 86, Renon,
Denpasar
T. +62361 244445
F. +62361 264773

Universitas Muhammadiyah Pontianak

Fakultas Ekonomi UM
Pontianak
Jl. Ahmad Yani, No. 111,
Pontianak 78124
T. +62561 743465
F. +62561 766840

Universitas Negeri Makassar

Fakultas Ekonomi Gedung BT
Lt.2
Jl. A.P. Pettarani, Kampus
UNM, Gunungsari Baru
Makassar 90222
T. +62 411 889464 / 881244
F. +62 411 887604

STIE AAS Surakarta

Jl. Slamet Riyadi No. 361,
Kartasura, Surakarta
T. +62 271 726156
F. +62 271 726156

UPN "Veteran" Yogyakarta

Jl. Babarsari 2, Tambak Bayan
Yogyakarta
T. +62 274 485268
F. +62 274 487147

Disclaimer:

Information, opinions and recommendations contained in this document are presented by PT Reliance Securities Tbk. from sources that are considered reliable and dependable. This document is not an offer, invitation or any kind of representations to decide to buy or sell stock. Investment decisions taken based on this document is not the responsibility of PT Reliance Securities Tbk. PT Reliance Securities Tbk. reserves the right to change the contents of this document at any time without prior notice.