

Weekly IHSG



5312.84
58.53
1.11%

Vol (Mn): 96.69
Val (Bn): 27.98
F Net B (Bn): 732

Weekly LQ-45



886.62
11.11
1.27%

Sector	Last	WoW Chg	(%)
Agriculture	1898.57	3.99	0.21%
Basic Industry	555.64	21.26	3.98%
Composite	5312.84	58.53	1.11%
Consumer	2359.87	27.10	1.16%
Finance	805.48	5.10	0.64%
Infrastructure	1046.94	17.32	1.68%
Manufacture	1384.75	22.65	1.66%
Mining	1395.44	13.53	0.98%
Misc Industry	1341.89	12.62	0.95%
Property	518.20	-3.40	-0.65%
Trade	868.28	10.55	1.23%

Source: Bloomberg

International	Last	WoW Chg	(%)
DJIA	20,093.78	361.38	1.83%
Nasdaq	5,660.78	120.70	2.18%
S&P 500	2,294.69	31.00	1.37%
FTSE 100	7,184.49	-23.95	-0.33%
Nikkei 225	19,467.40	395.15	2.07%
Hang Seng	23,360.78	310.82	1.35%
Sanghai Comp	3,388.0	286.66	9.24%

Source: Bloomberg

Exchange Rates	Last	WoW Chg	(%)
USD / IDR	13343	-11.00	-0.08%
US \$ Index	100.25	0.03	0.03%
EUR / USD	1.07	0.00	-0.12%
USD / JPY	114.49	0.98	0.86%
GBP / USD	1.26	0.01	0.96%
USD / CNY	6.88	0.03	0.38%
AUD / USD	0.76	0.00	-0.13%

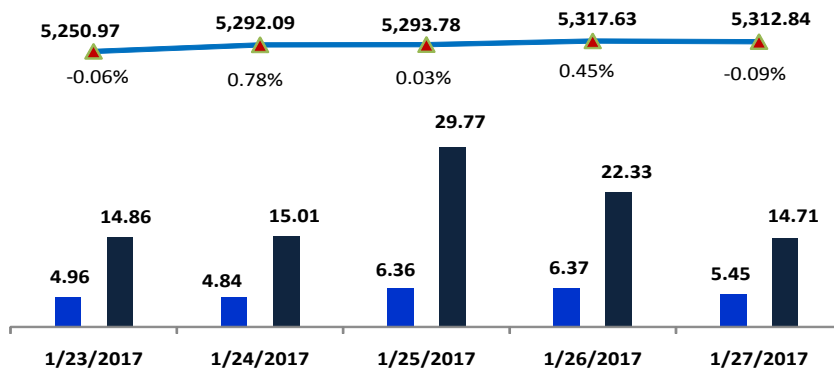
Others	Last	WoW Chg	(%)
S&P 500 Vlty (VIX)	10.58	-0.96	-8.32%
Baltic Dry	827.00	-98.00	-10.59%

Source: Bloomberg

Monday Recommendation Flashback

Stock	Rec.	01/20/2016 (close)	Stop Loss	Loss	Week's Highest	Date	Potential Gain	Week's Lowest	Date	Potential Gain
BDMN	PS	4,100	4,040	-1.46%	4,280	1/27/2017	4.39%	4,000	1/23/2017	-2.44%
SSIA	S	600	590	-1.67%	635	1/24/2017	5.83%	590	1/23/2017	-1.67%
BEST	PS	326	318	-2.45%	326	1/23/2017	0.00%	306	1/25/2017	-6.13%
AKRA	H	6,500	6,350	-2.31%	6,875	1/23/2017	5.77%	6,600	1/25/2017	1.54%

IHSG on the Week (01/23/2016 - 01/27/2016)



LS-27 Close	875.86	884.17	884.31	889.22	886.62
LS-27 % Chg	0.00	0.01	0.00	0.01	0.00
Frng Net Buy (Bn)	-81.00	-184.18	388.11	229.05	379.92
	794.86	700.00	1272.42	1118.28	1266.54

your **reliable** partner | 1

IHSG



S1	5280	R1	5400
S2	5175	R2	5545
S3	5100	R3	5700

Comment:

IHSG surged after rebounded at MA25 support level. Trading range 5268–5332.

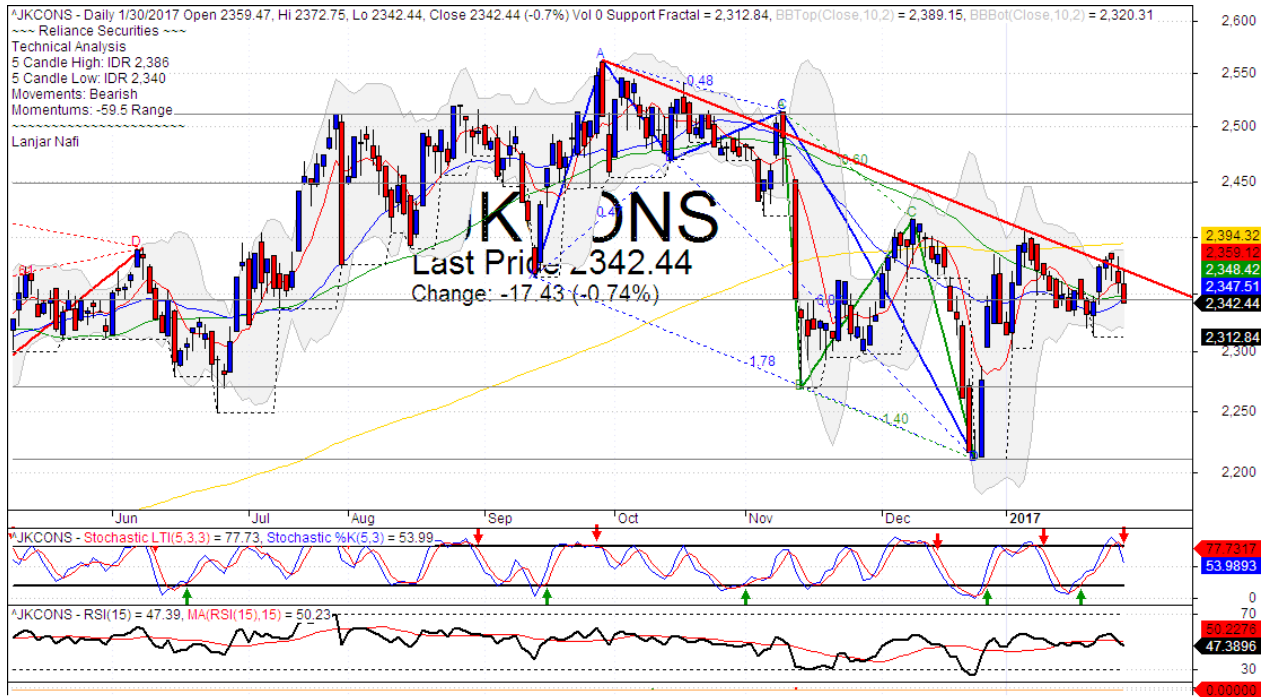
In the first session of the week. The index bearish engulfing at upper Bollinger bands resistance level. Bearish reversal signal.

Stochastic, dead-cross indications at overbought oscillator. Broad downside potential. RSI indicator still consolidations momentum at middle state.

Long term bullish trend movement.

Stop-loss level if broke the MA25 support level at 5250. Downside potential until 5165 (MA200 support level).

Consumer Index



Created with AmiBroker - advanced charting and technical analysis software. <http://www.amibroker.com>

S1	2270	R1	2345
S2	2210	R2	2450
S3	2150	R3	2510

Comment:

Consumer index surged significant after broke the MA50 resistance level last week. Trading range 2340–2386.

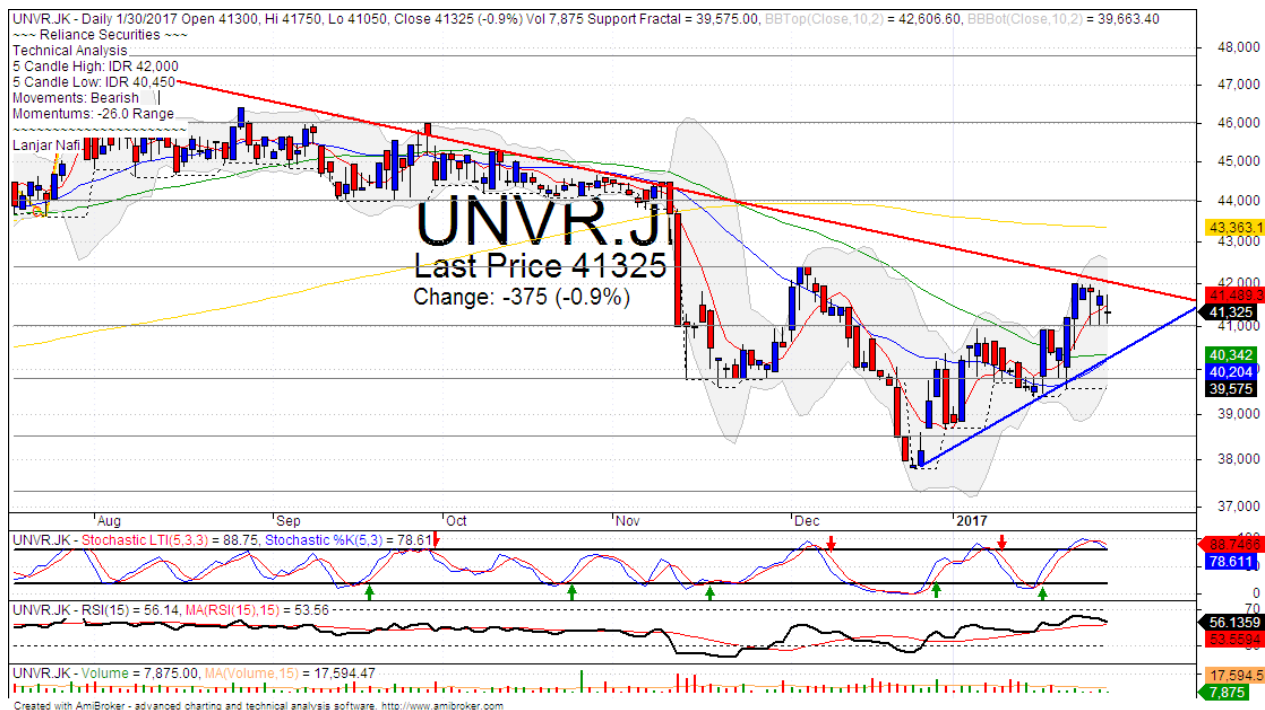
By the first session today, the index pulled back confirmations with bearish trend resistance level and MA200 resistance level. Distributions signal.

Stochastic has dead-cross at overbought oscillator and broad downside potential. RSI momentum still consolidations at middle oscillator.

Medium term bearish trend movement.

This week resistance at 2370 (Bearish resistance level). Stop-loss position if broke the MA50 support level at 2335.

UNVR



S1	41000	R1	42400
S2	39800	R2	44000
S3	38500	R3	46000

Comment:

UNVR has surged significant after rebounded at bullish trend support level. Trading range 40450–42000.

By the first session this week, the price had pulled back signal at bearish trend resistance level. Distributions signal.

Stochastic dead-cross at overbought oscillator, broad downside potential. RSI has bearish reversal momentum at from overbought oscillator.

Medium term bullish and long term bearish trend movement.

Upside scenario: (Probability 30%)

If the price broke the resistance level at 42400. Upside target to 43350.

Downside scenario: (Probability 70%)

Stop loss level at 40800 (Broke the support level). Do a tight stop loss on this level. If a break down appeared, the price will potentially continue to 39550 (Lower Bollinger bands support level).

HEAD OFFICE

Reliance Building

Jl. Pluit Sakti Raya No. 27AB,
Pluit
Jakarta 14450
T. +62 21 661 7768
F. +62 21 661 9884

RESEARCH DIVISION

Robertus Yanuar Hardy

robertus@reliance-securities.com

Rio Adrianus

rio.adrianus@reliance-securities.com

Lanjar Nafi Taulat I

lanjar@reliance-securities.com

Aji Setiawan

aji@reliance-securities.com

Shanti Dwi Jayanti

santi@reliance-securities.com

Senior Analyst

Research Analyst

Technical Research Analyst

Associate Research Analyst

Associate Research Analyst

EQUITY DIVISION

Jakarta- Pluit

Jl. Pluit Sakti Raya No. 27AB,
Pluit
Jakarta 14450
T. +62 21 661 7768
F. +62 21 661 9884

Bandung

Jl.Cisangkuy No.58
Bandung 40115
T. +62 22 721 8200
F. +62 22 721 9255

Surabaya - Gubeng

Jl. Bangka No. 22
Surabaya 60281
T. +62 31 501 1128
F. +62 31 503 3196

Makassar

Jl. Boto Lempangan No. 34 J
Makassar- Sulawesi Selatan
T. +62 411 3632388
F. +62 411 3614634

Jakarta - Sudirman

Menara Batavia Ground Floor
Jl.KH.Mas Mansyur Kav 126
Jakarta 10220
T. +62 21 57905455
F. +62 21 57950728

Tasikmalaya

Ruko Tasik Indah Plaza No.21
Jl. KHZ Mustofa No. 345
Tasikmalaya 46121
T. +62 265 345000
F. +62 265 345003

Surabaya - Diponegoro

Jl. Diponegoro No.26D
Surabaya 60261
T. +62 31 567 0388
F. +62 31 561 0528

Medan

Jl. Teuku Amir Hamzah No.40-O
Medan 20117
T. +62 61 6638592
F. +62 61 6638023

Jakarta - Kebon Jeruk

Plaza Kebon Jeruk
Jl.Raya Perjuangan Blok A/2
Jakarta 11530
T. +62 21 532 4074
F. +62 21 536 2157

Malang

Jl. Guntur No. 19
Malang 65112
T. +62 341 347 611
F. +62 341 347 615

Bali - Denpasar

Dewata Square Blok A3
Jl. Letda Tantular Renon
Denpasar 802361
T. +62 361 225099
F. +62 361 245099

Tangerang

Jl. Pahlawan Seribu Ruko BSD
Sektor 7 Blok RK kav. 9
Tangerang 15310
T. +62 21 5387495
F. +62 21 5387494

Pekanbaru

Jl. Jendral Sudirman No.73
Pekanbaru-Riau
T. +62 761 848414
F. +62 761 849456

Pontianak

Jl. MT Haryono No. 6
Pontianak 78121
T. +62 561 575674
F. +62 561 575670

Jakarta - Centro

Ruko Centro Residence Kav. 4-5
Tower C Lt. 1 No. 26-29
Jl. Macan, Daan Mogot
Jakarta 14450
T. +62 21 56945227
F. +62 21 56945226

Solo

Jl. Slamet Riyadi 330^a
Solo 57145
T. +62 271 736599
F. +62 271 733478

Balikpapan

Ruko Bukit Damai Indah
Blok I, No. 3, Rt.34
Jl. MT. Haryono, Gunung
Bahagia, Balikpapan Selatan
76114
T. +62 542 746313
F. +62 542 746317

IDX CORNER & INVESTMENT GALLERY

President University

Resto Plaza 1F - Jababeka
Education Park
Jl. Ki Hajar Dewantara Raya
Cikarang - Bekasi 17550
T. +62 21 89106030

Universitas Siliwangi Tasikmalaya

Jl. Siliwangi No. 24
Tasikmalaya 46151
T. +62 265 323685
F. +62 265 323534

Politeknik Kediri

Jl. Mayor Bismo No. 27
Kediri 64121
T. +62 354 683128
F. +62 354 683128

Universitas Muhammadiyah Sidoarjo

Jl. Majapahit 666 B
Sidoarjo, Jawa Timur
T. +62 31 8945444
F. +62 31 8949333

Universitas Tanjungpura Pontianak

Jl. Jendral Ahmad Yani
Pontianak 78124
T. +62 561 743465
F. +62 561 766840

Universitas Pesantren Tinggi Darul Ulum

Kompleks Pp Darul Ulu,
Peterongan
Jombang, Jawa Timur 60281
T. +62 321 873655
F. +62 321 875771

STIE "AUB" Surakarta

Jl. Mr. Sartono 97, Cengklik
Nusukan, Surakarta 57135
T. +62 271 854803
F. +62 271 853084

Universitas Surabaya

Jl. Raya Kalirungkut
Surabaya 60293
T. +62 31 298 1203
F. +62 31 298 1204

Universitas Muhammadiyah Gresik

Jl. Sumatra 101 GKB
Gresik 61121
T. +62 31 395 1414
F. +62 31 395 2585

Universitas Negeri Malang

Jl. Surabaya No. 6
Malang 65145
T. +62 341 585914
F. +62 341 55288

Universitas Muhammadiyah Malang

Jl. Raya Tlogomas 246
Malang 65144
T. +62 341 464318-9
F. +62 341 460782

FSEI IAIN Antasari

Jl. Ahmad Yani Km. 4,5
Banjarmasin
T. + 62 511 3265783

STIE Malangkececwara

Jl. Terusan Candi Kalasan
Malang 65142
T. +62 341 491813
F. +62 341 495619

STIESIA Surabaya

Jl. Menur Pumpungan 30
Surabaya
T. +62 31 5947505
F. +62 31 5932218

Universitas 17 Agustus 1945 Banyuwangi

Jl. Adi Sucipto 26
Banyuwangi, Jawa Timur
T. +62 333 419613
F. +62 333 419163

STIE Tri Bhakti

Jl. Teuku Umar No. 24
Cut Meutia Setiakawan,
Bekasi
T. +62 21 82429400,
82429500
F. +62 271 726156

Universitas Islam Kalimantan

Jl. Adiyaksa No. 2, Kayu
Tangi, Banjarmasin
T. + 62 511 3303871
F. + 62 511 3303871

STIKOM Bali

Jalan Puputan No. 86, Renon,
Denpasar
T. +62361 244445
F. +62361 264773

Universitas Muhammadiyah Pontianak

Fakultas Ekonomi UM
Pontianak
Jl. Ahmad Yani, No. 111,
Pontianak 78124
T. +62561 743465
F. +62561 766840

Universitas Negeri Makassar

Fakultas Ekonomi Gedung BT
Lt.2
Jl. A.P. Pettarani, Kampus
UNM, Gunungsari Baru
Makassar 90222
T. +62 411 889464 / 881244
F. +62 411 887604

STIE AAS Surakarta

Jl. Slamet Riyadi No. 361,
Kartasura, Surakarta
T. +62 271 726156
F. +62 271 726156

UPN "Veteran" Yogyakarta

Jl. Babarsari 2, Tambak Bayan
Yogyakarta
T. +62 274 485268
F. +62 274 487147

Disclaimer:

Information, opinions and recommendations contained in this document are presented by PT Reliance Securities Tbk. from sources that are considered reliable and dependable. This document is not an offer, invitation or any kind of representations to decide to buy or sell stock. Investment decisions taken based on this document is not the responsibility of PT Reliance Securities Tbk. PT Reliance Securities Tbk. reserves the right to change the contents of this document at any time without prior notice.