

IHSG



5359.29
8.36
0.16%

Vol (Mn): 11,007
Val (Bn): 4,826

LQ45



888.20
0.80
0.09%

Sector Indices	Last	Change	Change %
Agriculture	1868.44	3.18	0.17
Basic Industry	572.79	(3.00)	(0.52)
Consumer	2339.40	(9.98)	(0.43)
Finance	827.85	4.66	0.56
Infrastructure	1062.73	1.67	0.16
Manufacture	1384.37	(3.36)	(0.24)
Mining	1431.21	19.62	1.37
Misc Industry	1335.00	9.22	0.69
Property	521.71	(2.26)	(0.43)
Trade	856.67	2.86	0.33

Source: relitrade next G

Most Active	Last	Change %	Freq
BMTR	560	1.8	17,402
SDPC	115	(10.9)	15,404
MCOR	294	17.6	14,037
PRAS	183	(12.9)	10,829
BUMI	380	5.0	9,305

Most Volume	Last	Change %	M share
MYRX	125	(3.8)	16,446
ELTY	73	2.8	12,313
ENRG	50	0.0	11,695
BKSL	103	5.1	7,458
MCOR	294	17.6	6,367

Most Value	Last	Change %	Rp Bil
MYRX	125	(3.8)	211.30
BUMI	380	5.0	202.89
BMRI	11,275	1.8	202.77
MCOR	294	17.6	184.10
BBRI	11,750	0.4	177.38

Source: relitrade next G

IHSG Technical Review



R3	5700
R2	5540
R1	5400
Last	5359.29
S1	5280
S2	5175
S3	5100

Comment:

Bearish momentum and break out MA7 support level.

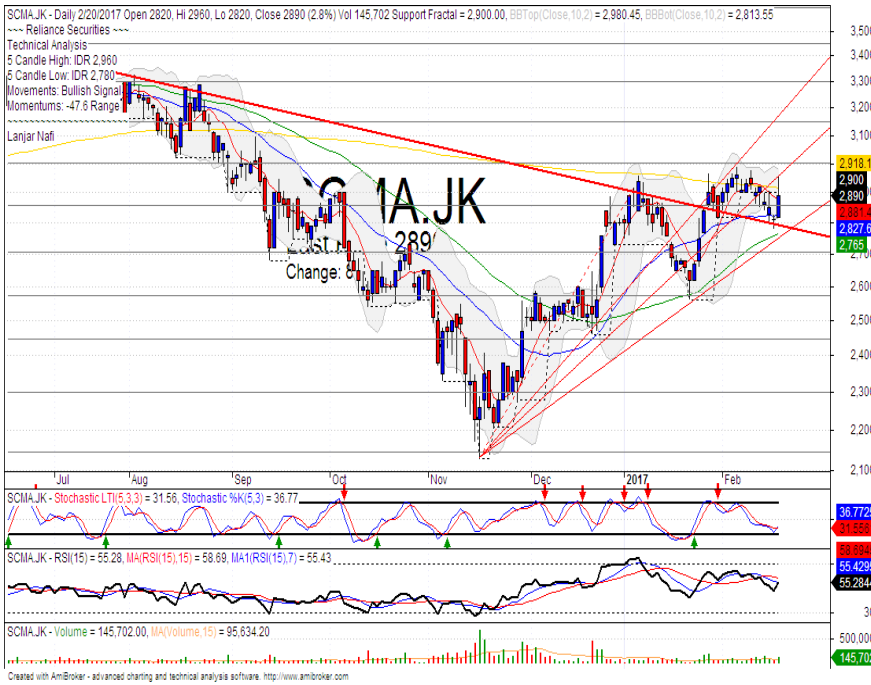
Stochastic, bearish movement at near overbought.

RSI broke the MA support of momentum at middle oscillator.

Long term bullish trend movement.

Stop-loss level if broke the MA25 support level at 5310. Downside potential until 5285 (MA50 support level).

SCMA



R3	3300
R2	3140
R1	3000
Last	2890
S1	2850
S2	2710
S3	2570

TRADING BUY

Comment:

Rebounded at MA50 support level. Huge trading volume.

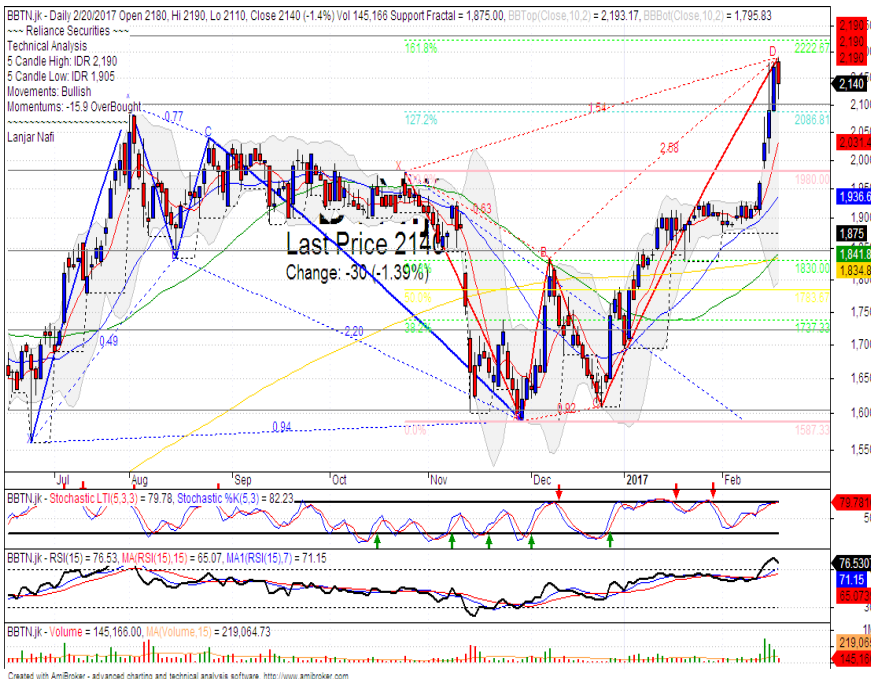
Stochastic, golden-cross at oversold oscillator broad upside potential.

RSI consolidations at middle oscillator.

Medium term bullish trend movement.

Upside target to 3140. Stop-loss level if broke the MA50 support level at 2760.

BBTN



R3	2500
R2	2360
R1	2220
Last	2140
S1	2100
S2	1985
S3	1845

SELL

Comment:

Reached the wing butterfly harmonic ideal target. Dark cloud cover candlestick pattern.

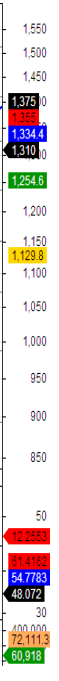
Stochastic dead-cross at overbought oscillator. Broad downside potential.

RSI bearish reversal momentum at overbought.

Medium term bullish trend movement.

Stop-loss level at 2090 (broke the support level). Downside potential until 1935.

RALS



R3	1510
R2	1410
R1	1325
Last	1310
S1	1235
S2	1155
S3	1070

TRADING BUY

Comment:
 Bullish harami candlestick pattern at bullish trend line support level. Reversal signal.

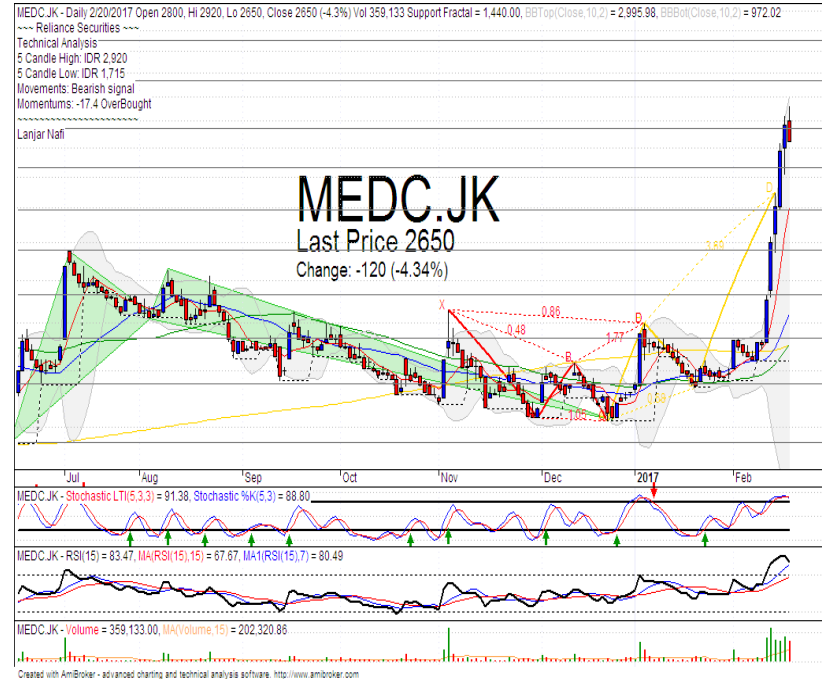
Stochastic golden-cross indications at oversold oscillator. Broad upside potential.

RSI consolidations momentum at oversold oscillator.

Short term bearish trend movement level.

Upside target to MA25 target level at 1435. Stop-loss if broke the bullish trend support level at 1270.

MEDC



R3	3500
R2	3150
R1	2740
Last	2650
S1	2450
S2	2200
S3	1960

SELL

Comment:
 Dark cloud cover candlestick pattern. Huge trading volume. Reversal signal.

Stochastic dead-cross at overbought oscillator. Broad downside potential.

RSI bearish reversal momentum at overbought.

Short term bullish trend movement.

Stop-loss if confirmations the bearish signal at 2530. Downside potential until 2180.

Stocks	S2	S1	Closing Price	R1	R2	Technical Notes	Rec	Stop Loss	Rec Buy Prc	Target Price
Plantation										
AALI	14,000	14,900	15,225	15,850	16,700	Bullish homing pigeon	TB	15,000		16,000
LSIP	1,475	1,545	1,525	1,630	1,720	Bearish momentum	W	1,540		1,630
Mining										
INCO	2,500	2,670	2,790	2,870	3,040	Consolidations at bearish trend line	PS	2,700		
Consumer										
UNVR	39,800	41,000	42,100	42,500	44,000	Bearish momentum	PS	40,000		
INDF	7,250	7,900	8,125	8,500	9,125	Consolidations	H	7,850		8,500
KLBF	1,370	1,420	1,460	1,485	1,540	Bearish momentum	W	1,410		
Trading										
ACES	710	755	775	810	870	Bearish momentum	S	750		
AKRA	6,100	6,100	6,125	6,600	6,925	Consolidations	W	6,000		
UNTR	22,500	24,000	24,425	25,325	26,700	Overbought	H	24,200		25,000
Property & Construction										
LPCK	4,600	4,820	4,850	5,125	5,420	Bullish engulfing	TB	4,800		5,100
WIKA	2,200	2,400	2,500	2,600	2,800	Sideways	W	2,480		
BSDE	1,720	1,830	1,890	1,935	2,030	Bearish momentum	PS	1,820		
WSKT	2,260	2,410	2,550	2,600	2,800	Bearish momentum	PS	2,400		
ADHI	1,850	1,950	2,180	2,200	2,300	Bearish momentum	PS	1,940		
Basic Industry & Chemical										
SMGR	8,150	8,725	9,200	9,350	9,900	Bearish momentum	S	9,300		
CPIN	3,170	3,400	3,430	3,580	3,770	Pulled back resistance level	PS	3,400		
MAIN	1,050	1,180	1,290	1,300	1,400	Pulled back resistance level	PS	1,250		
INTP	14,600	15,500	15,500	16,350	17,550	Consolidations	W	15,500		
Miscellaneous										
SRIL	250	276	288	288	316	Consolidations	H	274		288
ASII	7,500	7,850	7,950	8,250	8,650	Bearish consolidations	W	7,800		
Finance										
BBTN	1,980	2,100	2,140	2,200	2,360	Dark cloud cover	PS	2,090		
BMRI	10,750	11,000	11,275	11,450	11,800	Consolidations	TB	11,000		11,600
BTPN	2,340	2,550	2,600	2,770	3,000	Overbought	H	2,540		
BJBR	2,140	2,210	2,310	2,470	2,760	Sideways	TB	2,200		2,570
BBRI	10,600	11,100	11,750	11,725	12,300	Bearish momentum	PS	11,600		
Infrastructure										
TLKM	3,510	3,710	3,870	3,950	4,200	Sideways	TB	3,700		3,950
PGAS	2,360	2,560	2,690	2,800	3,050	Bearish momentum	TB	2,550		2,800

Source : Reliance Securities

Analyst Conclusions:

The index has bearish movement and arrived at overbought area.

Legend :

- B: BUY (allocate till 100% of the weighted capital to accumulate, higher than 50% upside probability)
- SB: SPECULATIVE BUY (allocate 25%-50% of the weighted capital to accumulate, 25%-50% upside probability)
- W: WAIT (wait for proper entry level, do the stop-loss if necessary)
- H: HOLD (hold the portfolio position, aim for the best price to distribute)
- PS: PARTIAL SELL (distribute 25%-50% part of the portfolio, 25%-50% downside probability)
- S: SELL (distribute till 100% of the portfolio, higher than 50% downside probability)
- TB: TRADING BUY (short term or intraday trading within a tight trading range. Highly speculative).

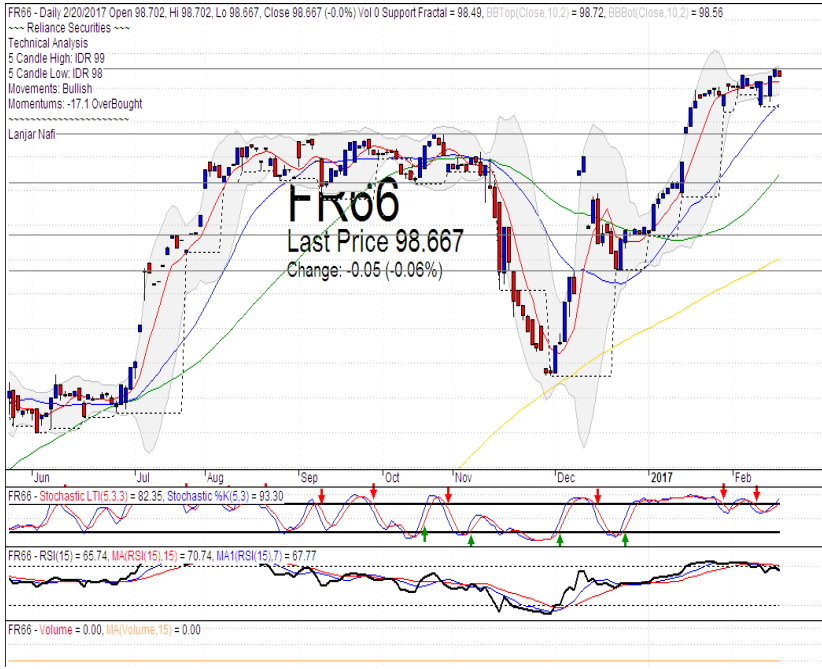
Ticker	Resistance Fractal	Price 2/20/2017	Support Fractal	Weekly High	Weekly Low	Indicator			Moving Average			
						Stochastic	RSI	B. Band	25 Days	50 Days	200 Days	
AALIJK	16,275	15,225	15,475	15,925	15,400	Oversold	Bearish	Neutral	Lower Bands	Under	Under	Under
ACESJK	800	775	760	800	780	Neutral	Bullish	Neutral	Middle Bands	Upper	Under	Under
ADHIJK	2,350	2,180	1,945	2,350	2,140	Neutral	Bearish	Neutral	Middle Bands	Upper	Upper	Under
ADROJK	1,755	1,695	1,615	1,725	1,675	Neutral	Bullish	Neutral	Middle Bands	Under	Under	Upper
AISAJK	2,000	1,965	1,945	2,000	1,980	Neutral	Bearish	Neutral	Middle Bands	Under	Under	Upper
AKRAJK	6,750	6,125	6,425	6,750	6,475	Neutral	Bearish	Neutral	Lower Bands	Under	Under	Under
ANTMJK	820	785	795	820	800	Oversold	Bearish	Neutral	Middle Bands	Under	Under	Under
APLNJK	228	224	222	246	228	Neutral	Bearish	Neutral	Middle Bands	Under	Under	Under
ASIIJK	8,150	7,950	8,000	8,150	7,975	Neutral	Bearish	Neutral	Middle Bands	Under	Under	Upper
ASRIJK	398	384	384	398	388	Oversold	Bearish	Neutral	Middle Bands	Under	Upper	Under
BBCAJK	15,700	15,450	15,000	15,650	15,550	Neutral	Bearish	Neutral	Middle Bands	Upper	Upper	Upper
BBKPKJ	630	605	605	625	615	Neutral	Bearish	Neutral	Middle Bands	Under	Under	Under
BBNIJK	6,325	6,275	6,125	6,325	6,275	Neutral	Bearish	Overbought	Middle Bands	Upper	Upper	Upper
BBRIJK	12,125	11,750	11,825	12,125	11,850	Neutral	Bearish	Neutral	Middle Bands	Under	Upper	Upper
BBTNJK	1,835	2,140	1,875	2,190	1,965	Overbought	Bullish	Overbought	Upper Bands	Upper	Upper	Upper
BDMNJK	4,630	4,990	4,410	5,100	4,640	Overbought	Bullish	Overbought	Upper Bands	Upper	Upper	Upper
BHITJK	146	132	130	146	134	Neutral	Bearish	Neutral	Lower Bands	Under	Under	Under
BIBRJK	2,360	2,310	2,270	2,360	2,310	Neutral	Bullish	Neutral	Middle Bands	Under	Under	Upper
BITMJK	650	555	570	590	575	Neutral	Bullish	Neutral	Middle Bands	Under	Under	Upper
BKSLJK	95	103	94	104	96	Neutral	Bullish	Neutral	Upper Bands	Upper	Upper	Upper
BMRIJK	11,075	11,275	10,900	11,600	11,200	Neutral	Bearish	Neutral	Middle Bands	Upper	Upper	Upper
BMTRJJK	630	560	590	630	575	Oversold	Bearish	Neutral	Middle Bands	Under	Under	Under
BSDEJK	1,920	1,890	1,825	1,920	1,900	Neutral	Bullish	Neutral	Middle Bands	Upper	Upper	Under
BTPNJK	2,650	2,600	2,500	2,650	2,570	Overbought	Bearish	Neutral	Middle Bands	Upper	Under	Under
BWPTJK	398	366	332	390	366	Neutral	Bearish	Neutral	Middle Bands	Upper	Upper	Upper
CMNPJK	1,515	1,480	1,485	1,515	1,485	Oversold	Bearish	Neutral	Lower Bands	Under	Under	Under
CPINJK	3,550	3,430	3,100	3,550	3,470	Neutral	Bearish	Neutral	Middle Bands	Upper	Upper	Under
CSAPJK	515	498	492	505	500	Neutral	Bullish	Neutral	Middle Bands	Under	Under	Upper
CTRAJK	1,450	1,370	1,370	1,450	1,390	Neutral	Bearish	Neutral	Middle Bands	Upper	Upper	Under
CTRPJK	705	690	680	705	690	Neutral	Bearish	Neutral	Middle Bands	Upper	Under	Upper
CTRSJK	2,770	2,710	2,640	2,770	2,720	Neutral	Bullish	Neutral	Middle Bands	Upper	Under	Upper
DILDJK	510	478	444	510	466	Neutral	Bearish	Neutral	Middle Bands	Upper	Upper	Under
EXCLJK	3,090	3,230	2,780	3,240	3,060	Neutral	Bullish	Overbought	Upper Bands	Upper	Upper	Upper
GGRMJK	62,850	60,500	61,550	62,475	61,100	Oversold	Bearish	Neutral	Lower Bands	Under	Under	Under
GIAAJK	390	356	338	390	358	Neutral	Bearish	Neutral	Middle Bands	Upper	Upper	Under
QJTLJK	1,170	1,030	1,065	1,090	1,035	Oversold	Bullish	Neutral	Middle Bands	Under	Under	Under
HEXAJK	3,410	3,350	3,170	3,400	3,350	Neutral	Bullish	Neutral	Middle Bands	Upper	Upper	Upper
HRUMJK	2,110	2,030	1,920	2,110	2,030	Neutral	Bullish	Neutral	Middle Bands	Under	Under	Upper
ICBPJK	8,700	8,375	8,425	8,525	8,450	Oversold	Bearish	Neutral	Lower Bands	Under	Under	Under
IMASJK	1,350	1,270	1,255	1,350	1,295	Neutral	Bearish	Neutral	Middle Bands	Under	Under	Under
INCOJK	2,430	2,790	2,750	2,850	2,820	Neutral	Bearish	Neutral	Middle Bands	Upper	Upper	Upper
INDFJK	8,025	8,125	7,950	8,150	8,025	Neutral	Bullish	Neutral	Upper Bands	Upper	Upper	Upper
INDYJK	785	735	715	785	740	Neutral	Bearish	Neutral	Middle Bands	Under	Under	Upper
INTAJK	352	332	324	334	328	Overbought	Bearish	Neutral	Middle Bands	Under	Under	Upper
INTPTJK	16,100	15,500	15,100	15,950	15,625	Neutral	Bearish	Neutral	Middle Bands	Upper	Upper	Under
ITMGJK	15,750	15,475	14,950	15,500	15,225	Neutral	Bullish	Neutral	Middle Bands	Upper	Under	Upper
JPFAJK	1,935	1,900	1,695	1,950	1,915	Neutral	Bearish	Neutral	Middle Bands	Upper	Upper	Upper
JSMRJK	4,280	4,750	4,220	4,830	4,750	Neutral	Bearish	Overbought	Middle Bands	Upper	Upper	Under
KIAAJK	296	298	290	296	296	Overbought	Bullish	Neutral	Upper Bands	Upper	Upper	Upper
KLBFJK	1,495	1,460	1,450	1,495	1,470	Neutral	Bearish	Neutral	Lower Bands	Under	Under	Under
KRASJK	745	715	705	745	725	Neutral	Bearish	Neutral	Middle Bands	Under	Under	Under
LPCKJK	5,425	4,850	4,790	4,920	4,800	Oversold	Bullish	Neutral	Middle Bands	Under	Under	Under
LPKRJK	775	775	745	780	760	Neutral	Bullish	Neutral	Middle Bands	Upper	Upper	Under
LPPFJK	15,525	14,275	14,600	15,500	14,425	Oversold	Bearish	Neutral	Lower Bands	Under	Under	Under
LSIPJK	1,645	1,525	1,540	1,645	1,565	Neutral	Bearish	Neutral	Lower Bands	Under	Under	Under
MAINJK	1,365	1,290	1,170	1,365	1,295	Neutral	Bearish	Neutral	Middle Bands	Upper	Upper	Under
MAPIJK	5,975	5,600	5,350	5,975	5,800	Neutral	Bearish	Neutral	Middle Bands	Upper	Upper	Upper
MASAJK	250	240	222	240	226	Neutral	Bullish	Neutral	Middle Bands	Under	Under	Upper
MNCNJK	1,710	1,560	1,665	1,710	1,555	Oversold	Bearish	Neutral	Middle Bands	Under	Under	Under
MPPAJK	1,480	1,260	1,240	1,360	1,270	Oversold	Bullish	Neutral	Middle Bands	Under	Under	Under
MTLAJK	274	302	270	310	290	Overbought	Bearish	Neutral	Middle Bands	Upper	Upper	Upper
MYORJK	1,895	1,890	1,800	1,895	1,830	Overbought	Bullish	Neutral	Middle Bands	Upper	Upper	Upper
PGASJK	2,900	2,690	2,770	2,900	2,780	Neutral	Bearish	Neutral	Lower Bands	Under	Under	Under
FTBAJK	11,850	11,100	10,625	11,510	10,800	Neutral	Bullish	Neutral	Middle Bands	Under	Under	Upper
RALSJK	1,510	1,310	1,375	1,400	1,325	Oversold	Bearish	Neutral	Middle Bands	Under	Upper	Upper
ROTIJK	1,595	1,525	1,550	1,580	1,530	Neutral	Bearish	Neutral	Lower Bands	Under	Under	Under
SCMAJK	2,980	2,890	2,900	2,960	2,830	Neutral	Bullish	Neutral	Middle Bands	Upper	Upper	Under
SGROJK	2,050	2,050	1,995	2,050	2,040	Overbought	Bearish	Overbought	Upper Bands	Upper	Upper	Upper
SIMPJK	525	515	510	525	515	Neutral	Bearish	Neutral	Middle Bands	Under	Upper	Upper
SMCBJK	915	885	900	915	895	Oversold	Bearish	Neutral	Lower Bands	Under	Under	Under
SMGRJK	9,875	9,200	9,150	9,875	9,325	Neutral	Bearish	Neutral	Middle Bands	Upper	Upper	Under
SMRAJK	1,460	1,375	1,300	1,460	1,400	Neutral	Bearish	Neutral	Middle Bands	Upper	Upper	Under
SRILJK	310	288	272	310	292	Neutral	Bearish	Neutral	Middle Bands	Upper	Upper	Upper
SSIAJK	660	560	570	595	565	Oversold	Bearish	Neutral	Middle Bands	Under	Upper	Under
SSMSJK	1,665	1,640	1,625	1,665	1,655	Neutral	Bearish	Neutral	Middle Bands	Upper	Upper	Upper
TLKMJK	3,920	3,870	3,840	3,920	3,880	Neutral	Bullish	Neutral	Middle Bands	Under	Under	Under
TOTLJK	810	815	795	850	820	Neutral	Bearish	Neutral	Middle Bands	Upper	Upper	Upper
UNTRJK	23,250	24,425	22,775	24,700	23,325	Overbought	Bullish	Neutral	Upper Bands	Upper	Upper	Upper
UNVRJK	42,900	42,100	41,000	42,900	42,750	Neutral	Bearish	Neutral	Middle Bands	Upper	Under	Under

Source : Reliance Research

Legend :

- Movement: Bullish and Bearish (Indicator Stochastic)
- Momentum: Oversold, Overbought and Neutral (Indicator RSI)
- Resistance Fractal: Strong Resistance
- Support Fractal: Strong Support
- Green: Good Conditions
- Red: Poor Conditions

SR 08



R3	99.45
R2	99.15
R1	98.70
Last	98.67
S1	98.33
S2	98.04
S3	97.75

SELL

Comment:
Bearish harami candlestick pattern. Reversal signal.

Stochastic dead-cross at overbought oscillator. Broad downside potential.

RSI bearish reversal momentum from overbought oscillator.

Medium term bullish trend movement.

Stop-loss level if broke the MA7 support level at 98.50.

Ticker	Resistance Fractal	Price 2/21/2017	Support Fractal	Weekly High	Weekly Low	Indicator			Moving Average			
						Stochastic	RSI	B. Band	25 Days	50 Days	200 Days	
FR34	120.37	120.24	120.18	120.36	120.24	Neutral	Bearish	Neutral	Upper Bands	Upper	Under	Under
FR43	112.62	112.58	112.33	112.63	112.49	Neutral	Bullish	Neutral	Upper Bands	Upper	Upper	Under
FR47	115.82	115.49	115.11	115.82	115.49	Neutral	Bearish	Neutral	Upper Bands	Upper	Upper	Under
FR53	103.92	103.67	103.74	103.92	103.72	Neutral	Bearish	Neutral	Upper Bands	Under	Upper	Under
FR54	112.47	111.97	111.95	112.37	112.04	Neutral	Bearish	Neutral	Upper Bands	Upper	Upper	Under
FR56	105.96	105.42	105.50	105.81	105.56	Neutral	Bearish	Neutral	Middle Bands	Upper	Upper	Under
FR58	102.50	101.56	101.32	102.50	101.63	Neutral	Bearish	Neutral	Upper Bands	Upper	Upper	Under
FR59	96.71	96.22	96.27	96.64	96.31	Neutral	Bearish	Neutral	Lower Bands	Under	Upper	Under
FR64	87.13	86.83	86.43	87.13	86.83	Neutral	Bearish	Neutral	Upper Bands	Upper	Upper	Under
FR66	98.67	98.67	98.49	98.71	98.56	Overbought	Bullish	Neutral	Upper Bands	Upper	Upper	Upper
FR68	103.05	102.55	102.01	103.05	102.55	Neutral	Bearish	Neutral	Upper Bands	Upper	Upper	Under
FR69	102.02	101.87	101.87	102.00	101.88	Neutral	Bearish	Neutral	Upper Bands	Under	Upper	Under
FR70	104.67	104.43	104.36	104.67	104.45	Neutral	Bearish	Neutral	Middle Bands	Upper	Upper	Under
FR71	107.97	107.76	107.83	107.94	107.77	Neutral	Bearish	Neutral	Upper Bands	Upper	Upper	Under
FR72	102.14	101.40	100.89	102.14	101.42	Oversold	Bearish	Neutral	Lower Bands	Under	Under	Under
FR73	107.08	106.46	105.42	107.08	106.49	Neutral	Bearish	Neutral	Middle Bands	Upper	Under	Under
ORI13	98.21	98.44	98.07	98.44	98.15	Overbought	Bullish	Neutral	Middle Bands	Upper	Upper	Upper
ORI12	103.62	103.48	103.45	103.60	103.49	Neutral	Bearish	Neutral	Lower Bands	Under	Upper	Under
SR06	100.33	100.18	100.11	100.33	100.18	Neutral	Bullish	Oversold	Lower Bands	Under	Under	Under
SR08	102.77	102.55	102.61	102.79	102.59	Neutral	Bearish	Neutral	Upper Bands	Under	Upper	Under

Analyst: Lanjar Nafi, lanjar@reliance-securities.com

Source: Reliance Research

Legend :

- Movement: Bullish and Bearish (Indicator Stochastic)
- Momentum: Oversold, Overbought and Neutral (Indicator RSI)
- Resistance Fractal: Strong Resistance
- Support Fractal: Strong Support
- Green: Good Conditions
- Red: Poor Conditions

HEAD OFFICE

Reliance Building

Jl. Pluit Sakti Raya No. 27AB,
Pluit
Jakarta 14450
T. +62 21 661 7768
F. +62 21 661 9884

RESEARCH DIVISION

Robertus Yanuar Hardy

robertus@reliance-securities.com

Rio Adrianus

rio.adrianus@reliance-securities.com

Lanjar Nafi Taulat I

lanjar@reliance-securities.com

Aji Setiawan

aji@reliance-securities.com

Shanti Dwi Jayanti

santi@reliance-securities.com

Senior Analyst

Research Analyst

Technical Research Analyst

Associate Research Analyst

Associate Research Analyst

EQUITY DIVISION

Jakarta- Pluit

Jl. Pluit Sakti Raya No. 27AB,
Pluit
Jakarta 14450
T. +62 21 661 7768
F. +62 21 661 9884

Bandung

Jl.Cisangkuy No.58
Bandung 40115
T. +62 22 721 8200
F. +62 22 721 9255

Surabaya - Gubeng

Jl. Bangka No. 22
Surabaya 60281
T. +62 31 501 1128
F. +62 31 503 3196

Makassar

Jl. Boto Lempangan No. 34 J
Makassar- Sulawesi Selatan
T. +62 411 3632388
F. +62 411 3614634

Jakarta - Sudirman

Menara Batavia Ground Floor
Jl.KH.Mas Mansyur Kav 126
Jakarta 10220
T. +62 21 57905455
F. +62 21 57950728

Tasikmalaya

Ruko Tasik Indah Plaza No.21
Jl. KHZ Mustofa No. 345
Tasikmalaya 46121
T. +62 265 345000
F. +62 265 345003

Surabaya - Diponegoro

Jl. Diponegoro No.26D
Surabaya 60261
T. +62 31 567 0388
F. +62 31 561 0528

Medan

Jl. Teuku Amir Hamzah No.40-O
Medan 20117
T. +62 61 6638592
F. +62 61 6638023

Jakarta - Kebon Jeruk

Plaza Kebon Jeruk
Jl.Raya Perjuangan Blok A/2
Jakarta 11530
T. +62 21 532 4074
F. +62 21 536 2157

Malang

Jl. Guntur No. 19
Malang 65112
T. +62 341 347 611
F. +62 341 347 615

Bali - Denpasar

Dewata Square Blok A3
Jl. Letda Tantular Renon
Denpasar 802361
T. +62 361 225099
F. +62 361 245099

Tangerang

Jl. Pahlawan Seribu Ruko BSD
Sektor 7 Blok RK kav. 9
Tangerang 15310
T. +62 21 5387495
F. +62 21 5387494

Pekanbaru

Jl. Jendral Sudirman No.73
Pekanbaru-Riau
T. +62 761 848414
F. +62 761 849456

Pontianak

Jl. MT Haryono No. 6
Pontianak 78121
T. +62 561 575674
F. +62 561 575670

Jakarta - Centro

Ruko Centro Residence Kav. 4-5
Tower C Lt. 1 No. 26-29
Jl. Macan, Daan Mogot
Jakarta 14450
T. +62 21 56945227
F. +62 21 56945226

Solo

Jl. Slamet Riyadi 330^a
Solo 57145
T. +62 271 736599
F. +62 271 733478

Balikpapan

Ruko Bukit Damai Indah
Blok I, No. 3, Rt.34
Jl. MT. Haryono, Gunung
Bahagia, Balikpapan Selatan
76114
T. +62 542 746313
F. +62 542 746317

IDX CORNER & INVESTMENT GALLERY

President University

Resto Plaza 1F - Jababeka
Education Park
Jl. Ki Hajar Dewantara Raya
Cikarang - Bekasi 17550
T. +62 21 89106030

Universitas Siliwangi Tasikmalaya

Jl. Siliwangi No. 24
Tasikmalaya 46151
T. +62 265 323685
F. +62 265 323534

Politeknik Kediri

Jl. Mayor Bismo No. 27
Kediri 64121
T. +62 354 683128
F. +62 354 683128

Universitas Muhammadiyah Sidoarjo

Jl. Majapahit 666 B
Sidoarjo, Jawa Timur
T. +62 31 8945444
F. +62 31 8949333

Universitas Tanjungpura Pontianak

Jl. Jendral Ahmad Yani
Pontianak 78124
T. +62 561 743465
F. +62 561 766840

Universitas Pesantren Tinggi Darul Ulum

Kompleks Pp Darul Ulu,
Peterongan
Jombang, Jawa Timur 60281
T. +62 321 873655
F. +62 321 875771

STIE "AUB" Surakarta

Jl. Mr. Sartono 97, Cengklik
Nusukan, Surakarta 57135
T. +62 271 854803
F. +62 271 853084

Universitas Surabaya

Jl. Raya Kalirungkut
Surabaya 60293
T. +62 31 298 1203
F. +62 31 298 1204

Universitas Muhammadiyah Gresik

Jl. Sumatra 101 GKB
Gresik 61121
T. +62 31 395 1414
F. +62 31 395 2585

Universitas Negeri Malang

Jl. Surabaya No. 6
Malang 65145
T. +62 341 585914
F. +62 341 55288

Universitas Muhammadiyah Malang

Jl. Raya Tlogomas 246
Malang 65144
T. +62 341 464318-9
F. +62 341 460782

FSEI IAIN Antasari

Jl. Ahmad Yani Km. 4,5
Banjarmasin
T. + 62 511 3265783

STIE Malangkececwara

Jl. Terusan Candi Kalasan
Malang 65142
T. +62 341 491813
F. +62 341 495619

STIESIA Surabaya

Jl. Menur Pumpungan 30
Surabaya
T. +62 31 5947505
F. +62 31 5932218

Universitas 17 Agustus 1945 Banyuwangi

Jl. Adi Sucipto 26
Banyuwangi, Jawa Timur
T. +62 333 419613
F. +62 333 419163

STIE Tri Bhakti

Jl. Teuku Umar No. 24
Cut Meutia Setiakawan,
Bekasi
T. +62 21 82429400,
82429500
F. +62 271 726156

Universitas Islam Kalimantan

Jl. Adiyaksa No. 2, Kayu
Tangi, Banjarmasin
T. + 62 511 3303871
F. + 62 511 3303871

STIKOM Bali

Jalan Puputan No. 86, Renon,
Denpasar
T. +62361 244445
F. +62361 264773

Universitas Muhammadiyah Pontianak

Fakultas Ekonomi UM
Pontianak
Jl. Ahmad Yani, No. 111,
Pontianak 78124
T. +62561 743465
F. +62561 766840

Universitas Negeri Makassar

Fakultas Ekonomi Gedung BT
Lt.2
Jl. A.P. Pettarani, Kampus
UNM, Gunungsari Baru
Makassar 90222
T. +62 411 889464 / 881244
F. +62 411 887604

STIE AAS Surakarta

Jl. Slamet Riyadi No. 361,
Kartasura, Surakarta
T. +62 271 726156
F. +62 271 726156

UPN "Veteran" Yogyakarta

Jl. Babarsari 2, Tambak Bayan
Yogyakarta
T. +62 274 485268
F. +62 274 487147

Disclaimer:

Information, opinions and recommendations contained in this document are presented by PT Reliance Securities Tbk. from sources that are considered reliable and dependable. This document is not an offer, invitation or any kind of representations to decide to buy or sell stock. Investment decisions taken based on this document is not the responsibility of PT Reliance Securities Tbk. PT Reliance Securities Tbk. reserves the right to change the contents of this document at any time without prior notice.