

## IHSG



5340.99  
-18.30  
-0.34%

Vol (Mn): 21,386  
Val (Bn): 6,283

## LQ45



886.34  
-1.86  
-0.21%

Sector Indices	Last	Change	Change %
Agriculture	1869.01	0.56	0.03
Basic Industry	566.07	(6.72)	(1.19)
Consumer	2335.64	(3.76)	(0.16)
Finance	826.95	(0.90)	(0.11)
Infrastructure	1057.79	(4.95)	(0.47)
Manufacture	1378.88	(5.49)	(0.40)
Mining	1419.74	(11.47)	(0.81)
Misc Industry	1330.55	(4.45)	(0.33)
Property	519.73	(1.99)	(0.38)
Trade	853.17	(3.51)	(0.41)

Source: relitrade next G

Most Active	Last	Change %	Freq
ELTY	50	(31.5)	27,359
BUMI	294	(22.6)	24,142
DEWA	52	(27.8)	14,182
RAJA	244	13.0	9,556
BRMS	66	(34.7)	8,813

Most Volume	Last	Change %	M share
ELTY	50	(31.5)	71,144
DEWA	52	(27.8)	29,878
MYRX	125	0.0	22,037
BUMI	294	(22.6)	21,471
BRMS	66	(34.7)	14,791

Most Value	Last	Change %	Rp Bil
BUMI	294	(22.6)	772.92
ELTY	50	(31.5)	415.37
MYRX	125	0.0	273.58
ASII	7,925	(0.3)	242.83
DEWA	52	(27.8)	191.30

Source: relitrade next G

## IHSG Technical Review



R3	5700
R2	5540
R1	5400
Last	5340.99
S1	5280
S2	5175
S3	5100

**Comment:**  
Bearish momentum and break out MA7 support level.

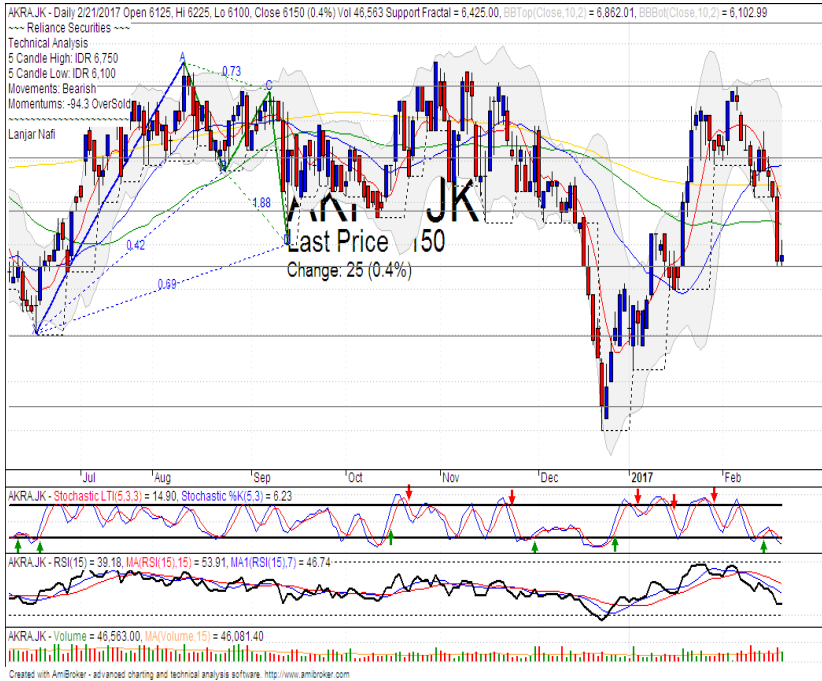
Stochastic, bearish movement at near overbought.

RSI broke the MA support of momentum at middle oscillator.

Long term bullish trend movement.

Stop-loss level if broke the MA25 support level at 5310. Downside potential until 5285 (MA50 support level).

## AKRA



R3	6975
R2	6600
R1	6350
Last	6150
S1	6100
S2	5800
S3	5500

### TRADING BUY

#### Comment:

Tweezers bottom candlestick pattern. Reversal signal.

Stochastic, golden-cross indications at oversold oscillator, broad upside potential.

RSI consolidations at near oversold oscillator.

Short term bearish trend movement.

Upside target to 6475 (MA200 resistance level). Stop-loss level if broke the support level at 6050.

## SSIA



R3	750
R2	685
R1	620
Last	565
S1	555
S2	500
S3	464

### SPECULATIVE BUY

#### Comment:

Bullish harami candlestick pattern confirmations. Reversal signal and rebounded at support level.

Stochastic golden-cross at oversold oscillator. Broad upside potential.

RSI Consolidations momentum at middle oscillator.

Short term bearish trend movement.

Upside target to resistance level at 620. Stop-loss level at 545 (broke the support level).

## LPPF



R3	16000
R2	15225
R1	14500
Last	14475
S1	13700
S2	13000
S3	12350

TRADING BUY

**Comment:** Bullish meeting line confirmations. Reversal signal.

Stochastic golden-cross at oversold oscillator. Broad upside potential.

RSI reversal momentum from oversold oscillator.

Short term bearish trend movement level.

Upside target to 61.8% Fibonacci ratio and MA50 target level at 14975. Stop-loss level at 13900 (False confirmations).

## LSIP



R3	1800
R2	1715
R1	1630
Last	1545
S1	1540
S2	1480
S3	1400

TRADING BUY

**Comment:** Bullish harami after whipsaw at support level. Gartley formations pattern.

Stochastic golden-cross indications at oversold oscillator.

RSI reversal momentum at near overbought.

Medium term bearish trend movement.

Upside target to 38.2% target of Gartley harmonic at 1660. Stop-loss if broke the support level at 1520.

Stocks	S2	S1	Closing Price	R1	R2	Technical Notes	Rec	Stop Loss	Rec Buy Prc	Target Price
<b>Plantation</b>										
AALI	14,000	14,900	15,175	15,850	16,700	Bearish momentum	TB	14,800		16,000
LSIP	1,475	1,545	1,545	1,630	1,720	Consolidations	TB	1,540		1,630
<b>Mining</b>										
INCO	2,500	2,670	2,740	2,870	3,040	Consolidations at bearish trend line	PS	2,700		
<b>Consumer</b>										
UNVR	41,000	42,500	42,750	44,000	46,000	Bearish momentum	PS	42,400		43,200
INDF	7,250	7,900	8,150	8,500	9,125	Consolidations	H	7,850		8,500
KLBF	1,370	1,420	1,460	1,485	1,540	Bearish momentum	W	1,410		
<b>Trading</b>										
ACES	710	755	785	810	870	Bearish momentum	S	750		
AKRA	6,100	6,100	6,150	6,600	6,925	Tweezer bottom	TB	6,000		6,475
UNTR	22,500	24,000	24,475	25,325	26,700	Overbought	H	24,200		25,000
<b>Property &amp; Construction</b>										
LPCK	4,600	4,820	4,830	5,125	5,420	Consolidations	TB	4,800		5,100
WIKA	2,200	2,400	2,480	2,600	2,800	Sideways	W	2,480		
BSDE	1,720	1,830	1,900	1,935	2,030	Bearish momentum	PS	1,820		
WSKT	2,260	2,410	2,560	2,600	2,800	Bearish momentum	W	2,400		
ADHI	1,850	1,950	2,190	2,200	2,300	Bearish momentum	PS	1,940		
<b>Basic Industry &amp; Chemical</b>										
SMGR	8,150	8,725	9,150	9,350	9,900	Oversold	TB	9,100		9,800
CPIN	3,000	3,210	3,210	3,400	3,580	Bearish momentum	PS	3,200		
MAIN	1,050	1,180	1,250	1,300	1,400	Bearish momentum	PS	1,220		
INTP	14,600	15,500	15,700	16,350	17,550	Consolidations	W	15,500		
<b>Miscellaneous</b>										
SRIL	250	276	276	288	316	Bearish momentum	PS	274		
ASII	7,500	7,850	7,925	8,250	8,650	Rectangle	TB	7,800		8,150
<b>Finance</b>										
BBTN	1,980	2,100	2,150	2,200	2,360	Overbought	PS	2,090		
BMRI	10,750	11,000	11,150	11,450	11,800	Consolidations	TB	11,000		11,600
BTPN	2,340	2,550	2,640	2,770	3,000	Overbought	H	2,540		
BJBR	2,140	2,210	2,310	2,470	2,760	Sideways	TB	2,200		2,570
BBRI	10,600	11,100	11,900	11,725	12,300	Bearish momentum	PS	11,600		
<b>Infrastructure</b>										
TLKM	3,510	3,710	3,880	3,950	4,200	Sideways	TB	3,700		3,950
PGAS	2,360	2,560	2,690	2,800	3,050	Bullish homing pigeon	TB	2,550		2,800

Source : Reliance Securities

### Analyst Conclusions:

The index has bearish movement and arrived at overbought area.

Legend :

- B: BUY (allocate till 100% of the weighted capital to accumulate, higher than 50% upside probability)
- SB: SPECULATIVE BUY (allocate 25%-50% of the weighted capital to accumulate, 25%-50% upside probability)
- W: WAIT (wait for proper entry level, do the stop-loss if necessary)
- H: HOLD (hold the portfolio position, aim for the best price to distribute)
- PS: PARTIAL SELL (distribute 25%-50% part of the portfolio, 25%-50% downside probability)
- S: SELL (distribute till 100% of the portfolio, higher than 50% downside probability)
- TB: TRADING BUY (short term or intraday trading within a tight trading range. Highly speculative).

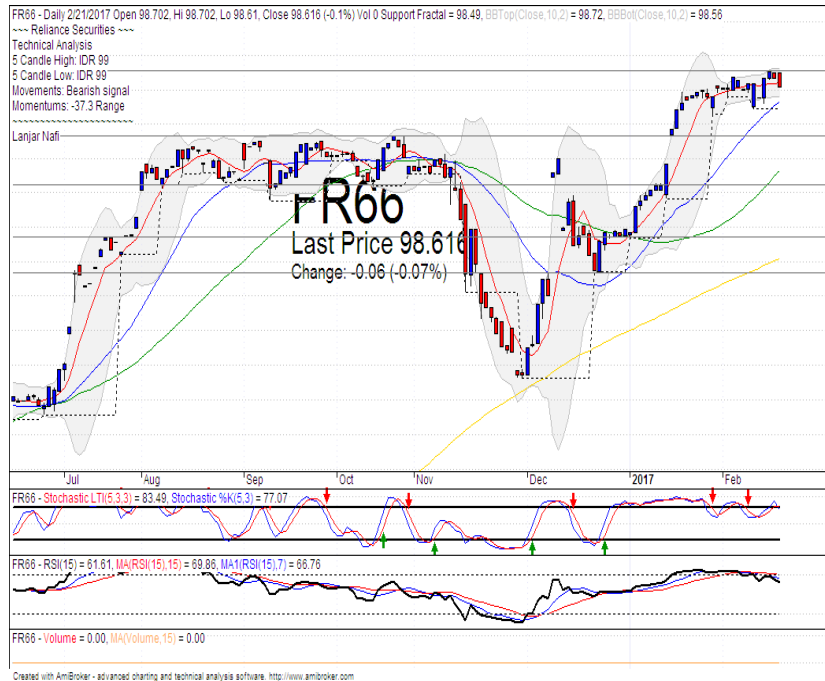
Ticker	Resistance Fractal	Price 2/21/2017	Support Fractal	Weekly High	Weekly Low	Indicator			Moving Average			
						Stochastic	RSI	B. Band	25 Days	50 Days	200 Days	
AALIJK	16,275	15,175	15,475	15,800	15,375	Oversold	Bearish	Neutral	Middle Bands	Under	Under	Under
ACESJK	800	785	765	800	785	Neutral	Bullish	Neutral	Middle Bands	Upper	Upper	Under
ADHIJK	2,350	2,190	2,160	2,350	2,230	Neutral	Bearish	Neutral	Middle Bands	Upper	Upper	Under
ADROJK	1,755	1,720	1,615	1,725	1,675	Neutral	Bullish	Neutral	Middle Bands	Upper	Upper	Upper
AISAJK	2,000	1,995	1,945	2,020	1,980	Neutral	Bullish	Neutral	Middle Bands	Upper	Upper	Upper
AKRAJK	6,750	6,150	6,425	6,750	6,225	Oversold	Bearish	Neutral	Lower Bands	Under	Under	Under
ANTMJK	820	790	795	815	800	Oversold	Bullish	Neutral	Middle Bands	Under	Under	Under
APLNJK	228	224	224	246	228	Oversold	Bearish	Neutral	Middle Bands	Under	Upper	Under
ASIIJK	8,150	7,925	7,850	8,150	7,975	Neutral	Bearish	Neutral	Lower Bands	Under	Under	Upper
ASRIJK	398	376	384	396	386	Oversold	Bearish	Neutral	Lower Bands	Under	Under	Under
BBCAJK	15,700	15,500	15,350	15,600	15,525	Neutral	Bearish	Neutral	Middle Bands	Upper	Upper	Upper
BBKPJK	630	600	605	625	610	Neutral	Bearish	Neutral	Middle Bands	Under	Under	Under
BBNIJK	6,325	6,275	6,125	6,325	6,275	Neutral	Bullish	Overbought	Middle Bands	Upper	Upper	Upper
BBRIJK	12,125	11,900	11,825	12,075	11,850	Neutral	Bearish	Neutral	Middle Bands	Upper	Upper	Upper
BBTNJK	1,835	2,150	1,875	2,190	2,080	Overbought	Bullish	Overbought	Middle Bands	Upper	Upper	Upper
BDMNJK	4,630	4,990	4,410	5,100	4,640	Overbought	Bearish	Overbought	Middle Bands	Upper	Upper	Upper
BHITJK	146	131	130	146	133	Oversold	Bearish	Neutral	Lower Bands	Under	Under	Under
BIBRJK	2,360	2,310	2,270	2,390	2,310	Neutral	Bullish	Neutral	Middle Bands	Under	Under	Upper
BJTMJK	650	545	570	585	560	Neutral	Bearish	Overbought	Middle Bands	Under	Under	Under
BKSLJK	95	98	94	104	97	Neutral	Bullish	Neutral	Middle Bands	Upper	Upper	Upper
BMRIJK	11,075	11,150	10,900	11,475	11,200	Neutral	Bearish	Neutral	Middle Bands	Upper	Upper	Upper
BMTRJK	630	540	590	625	560	Oversold	Bearish	Overbought	Lower Bands	Under	Under	Under
BSDEJK	1,920	1,900	1,825	1,910	1,900	Neutral	Bullish	Neutral	Middle Bands	Upper	Upper	Under
BTPNJK	2,650	2,640	2,500	2,670	2,620	Overbought	Bearish	Neutral	Middle Bands	Upper	Upper	Upper
BWPTJK	398	376	332	390	366	Neutral	Bullish	Neutral	Middle Bands	Upper	Upper	Upper
CMNPJK	1,515	1,475	1,485	1,510	1,485	Oversold	Bearish	Neutral	Lower Bands	Under	Under	Under
CPINJK	3,550	3,210	3,100	3,530	3,420	Neutral	Bearish	Neutral	Middle Bands	Under	Upper	Under
CSAPJK	515	498	492	500	500	Neutral	Bullish	Neutral	Middle Bands	Under	Under	Upper
CTRAJK	1,450	1,385	1,370	1,450	1,390	Oversold	Bearish	Neutral	Middle Bands	Upper	Upper	Under
CTRPJK	705	690	680	705	690	Neutral	Bearish	Neutral	Middle Bands	Upper	Under	Upper
CTRSJK	2,770	2,710	2,640	2,770	2,720	Neutral	Bullish	Neutral	Middle Bands	Upper	Under	Upper
DILDJK	510	476	444	510	478	Neutral	Bearish	Neutral	Middle Bands	Upper	Under	Under
EXCLJK	3,090	3,070	2,780	3,250	3,190	Neutral	Bearish	Neutral	Middle Bands	Upper	Upper	Upper
GGRMJK	62,850	60,150	61,550	62,075	60,525	Oversold	Bearish	Neutral	Lower Bands	Under	Under	Under
GIAAJK	390	344	338	390	358	Neutral	Bearish	Neutral	Middle Bands	Under	Under	Under
QJTLJK	1,170	1,015	1,015	1,085	1,035	Oversold	Bearish	Neutral	Middle Bands	Under	Under	Under
HEXAJK	3,410	3,390	3,170	3,400	3,350	Neutral	Bullish	Neutral	Middle Bands	Upper	Upper	Upper
HRUMJK	2,110	2,110	1,920	2,220	2,030	Neutral	Bullish	Neutral	Middle Bands	Upper	Under	Upper
ICBPJK	8,700	8,250	8,425	8,525	8,450	Oversold	Bearish	Neutral	Lower Bands	Under	Under	Under
IMASJK	1,350	1,270	1,255	1,315	1,270	Neutral	Bearish	Neutral	Middle Bands	Under	Under	Under
INCOJK	2,430	2,740	2,750	2,850	2,810	Neutral	Bearish	Neutral	Middle Bands	Upper	Under	Upper
INDFJK	8,025	8,150	7,950	8,200	8,025	Neutral	Bullish	Neutral	Upper Bands	Upper	Upper	Upper
INDYJK	785	745	715	785	740	Oversold	Bullish	Neutral	Middle Bands	Upper	Upper	Upper
INTAJK	352	332	324	334	330	Overbought	Bearish	Neutral	Middle Bands	Under	Under	Upper
INTPTK	16,100	15,700	15,350	15,775	15,625	Neutral	Bullish	Neutral	Middle Bands	Upper	Upper	Under
ITMGJK	15,750	16,525	14,950	16,950	15,225	Neutral	Bullish	Neutral	Upper Bands	Upper	Upper	Upper
JPFAJK	1,935	1,885	1,695	1,950	1,915	Neutral	Bearish	Neutral	Middle Bands	Upper	Upper	Upper
JSMRJK	4,280	4,670	4,220	4,830	4,750	Neutral	Bearish	Neutral	Middle Bands	Upper	Upper	Under
KIJAJK	296	298	290	296	296	Overbought	Bullish	Neutral	Upper Bands	Upper	Upper	Upper
KLBFJK	1,495	1,460	1,450	1,495	1,470	Neutral	Bearish	Neutral	Middle Bands	Under	Under	Under
KRASJK	745	690	705	745	715	Neutral	Bearish	Neutral	Lower Bands	Under	Under	Under
LPCKJK	5,425	4,830	4,770	4,870	4,800	Neutral	Bullish	Neutral	Middle Bands	Under	Under	Under
LPKRJK	775	770	745	785	760	Neutral	Bullish	Neutral	Middle Bands	Upper	Upper	Under
LPPFJK	15,525	14,475	14,600	15,350	14,425	Oversold	Bullish	Neutral	Middle Bands	Under	Under	Under
LSIPJK	1,645	1,545	1,540	1,645	1,555	Neutral	Bearish	Neutral	Middle Bands	Under	Under	Under
MAINJK	1,365	1,250	1,170	1,340	1,295	Neutral	Bearish	Neutral	Middle Bands	Upper	Upper	Under
MAPIJK	5,975	5,475	5,350	5,825	5,600	Neutral	Bearish	Neutral	Middle Bands	Upper	Upper	Upper
MASAJK	250	216	212	248	226	Neutral	Bullish	Neutral	Lower Bands	Under	Under	Under
MNCNJK	1,710	1,540	1,495	1,695	1,555	Oversold	Bullish	Neutral	Middle Bands	Under	Under	Under
MPPAJK	1,480	1,255	1,240	1,360	1,270	Oversold	Bullish	Neutral	Middle Bands	Under	Under	Under
MTLAJK	274	308	270	310	302	Overbought	Bearish	Neutral	Middle Bands	Upper	Upper	Upper
MYORJK	1,895	1,890	1,800	1,900	1,885	Overbought	Bullish	Neutral	Middle Bands	Upper	Upper	Upper
PGASJK	2,900	2,690	2,770	2,900	2,750	Oversold	Bearish	Neutral	Lower Bands	Under	Under	Under
FTBAJK	11,850	11,250	10,625	11,400	10,800	Neutral	Bullish	Neutral	Middle Bands	Under	Under	Upper
RALSJK	1,510	1,305	1,300	1,395	1,325	Oversold	Bearish	Neutral	Middle Bands	Under	Upper	Upper
ROTIJK	1,595	1,545	1,515	1,580	1,530	Neutral	Bullish	Neutral	Middle Bands	Under	Under	Upper
SCMAJK	2,980	2,840	2,780	2,960	2,830	Neutral	Bullish	Neutral	Middle Bands	Upper	Upper	Under
SGROJK	2,050	2,000	1,995	2,050	2,040	Neutral	Bearish	Neutral	Middle Bands	Upper	Upper	Upper
SIMPJK	525	515	510	525	515	Neutral	Bearish	Neutral	Middle Bands	Under	Upper	Upper
SMCBJK	915	880	880	915	890	Oversold	Bearish	Neutral	Lower Bands	Under	Under	Under
SMGRJK	9,875	9,150	9,150	9,725	9,300	Oversold	Bearish	Neutral	Middle Bands	Upper	Upper	Under
SMRAJK	1,460	1,400	1,300	1,455	1,400	Neutral	Bearish	Neutral	Middle Bands	Upper	Upper	Under
SRILJK	310	276	272	310	292	Neutral	Bearish	Neutral	Middle Bands	Upper	Upper	Upper
SSIAJK	660	565	550	595	565	Oversold	Bullish	Neutral	Middle Bands	Under	Upper	Under
SSMSJK	1,665	1,630	1,625	1,665	1,655	Neutral	Bearish	Neutral	Middle Bands	Upper	Upper	Upper
TLKMJK	3,920	3,880	3,840	3,900	3,880	Neutral	Bullish	Neutral	Middle Bands	Under	Under	Under
TOTLJK	810	810	795	850	820	Neutral	Bearish	Neutral	Middle Bands	Upper	Upper	Upper
UNTRJK	23,250	24,475	22,775	24,700	23,325	Overbought	Bullish	Overbought	Upper Bands	Upper	Upper	Upper
UNVRJK	42,900	42,750	41,000	42,900	42,750	Neutral	Bearish	Neutral	Middle Bands	Upper	Under	Under

Source : Reliance Research

### Legend :

- Movement: Bullish and Bearish (Indicator Stochastic)
- Momentum: Oversold, Overbought and Neutral (Indicator RSI)
- Resistance Fractal: Strong Resistance
- Support Fractal: Strong Support
- Green: Good Conditions
- Red: Poor Conditions

## FR 66



R3	99.45
R2	99.15
R1	98.70
Last	98.62
S1	98.33
S2	98.04
S3	97.75

**SELL**

### Comment:

Bearish harami candlestick pattern. Reversal signal.

Stochastic dead-cross at overbought oscillator. Broad downside potential.

RSI bearish reversal momentum from overbought oscillator.

Medium term bullish trend movement.

Stop-loss level if broke the MA7 support level at 98.50. Downside potential until 98.33.

## Indonesian Technical Bond

Ticker	Resistance	Price	Support	Weekly	Weekly	Indicator			Moving Average			
	Fractal	2/21/2017	Fractal	High	Low	Stochastic	RSI	B. Band	25 Days	50 Days	200 Days	
FR34	120.37	120.10	120.18	120.36	120.24	Neutral	Bearish	Neutral	Upper Bands	Under	Under	Under
FR43	112.62	112.43	112.33	112.63	112.49	Neutral	Bearish	Neutral	Lower Bands	Upper	Upper	Under
FR47	115.82	115.44	115.11	115.82	115.53	Neutral	Bearish	Neutral	Upper Bands	Upper	Upper	Under
FR53	103.92	103.55	103.74	103.92	103.72	Neutral	Bearish	Neutral	Upper Bands	Under	Upper	Under
FR54	112.47	111.95	111.95	112.24	112.04	Neutral	Bearish	Neutral	Upper Bands	Upper	Upper	Under
FR56	105.71	105.25	105.50	105.71	105.56	Neutral	Bearish	Neutral	Middle Bands	Under	Upper	Under
FR58	102.50	101.48	101.32	102.50	101.63	Neutral	Bearish	Neutral	Lower Bands	Upper	Upper	Under
FR59	96.71	96.04	96.27	96.64	96.31	Neutral	Bearish	Neutral	Lower Bands	Under	Upper	Under
FR64	87.13	86.77	86.43	87.13	86.87	Neutral	Bearish	Neutral	Upper Bands	Upper	Upper	Under
FR66	98.71	98.62	98.49	98.71	98.56	Overbought	Bearish	Neutral	Upper Bands	Upper	Upper	Upper
FR68	103.05	102.49	102.01	103.05	102.57	Neutral	Bearish	Neutral	Upper Bands	Under	Upper	Under
FR69	102.02	101.83	101.87	102.00	101.89	Neutral	Bearish	Neutral	Upper Bands	Under	Upper	Under
FR70	104.67	104.12	103.60	104.67	104.45	Neutral	Bearish	Neutral	Middle Bands	Upper	Upper	Under
FR71	107.97	107.57	107.83	107.94	107.77	Neutral	Bearish	Neutral	Upper Bands	Under	Upper	Under
FR72	102.14	101.23	100.89	102.14	101.42	Oversold	Bearish	Neutral	Lower Bands	Under	Under	Under
FR73	107.08	106.46	105.42	106.88	106.49	Neutral	Bearish	Neutral	Middle Bands	Upper	Under	Under
ORI13	98.21	98.44	98.07	98.44	98.15	Overbought	Bullish	Neutral	Middle Bands	Upper	Upper	Upper
ORI12	103.62	103.48	103.45	103.60	103.49	Neutral	Bearish	Neutral	Lower Bands	Under	Upper	Under
SR06	100.33	100.17	100.11	100.33	100.18	Neutral	Bullish	Oversold	Lower Bands	Under	Under	Under
SR08	102.77	102.50	102.61	102.79	102.59	Neutral	Bearish	Neutral	Upper Bands	Under	Upper	Under

Analyst: Lanjar Nafi, [lanjar@reliance-securities.com](mailto:lanjar@reliance-securities.com)

Source: Reliance Research

### Legend :

- Movement: Bullish and Bearish (Indicator Stochastic)
- Momentum: Oversold, Overbought and Neutral (Indicator RSI)
- Resistance Fractal: Strong Resistance
- Support Fractal: Strong Support
- Green: Good Conditions
- Red: Poor Conditions

## HEAD OFFICE

### Reliance Building

Jl. Pluit Sakti Raya No. 27AB,  
Pluit  
Jakarta 14450  
T. +62 21 661 7768  
F. +62 21 661 9884

## RESEARCH DIVISION

### Robertus Yanuar Hardy

*robertus@reliance-securities.com*

### Rio Adrianus

*rio.adrianus@reliance-securities.com*

### Lanjar Nafi Taulat I

*lanjar@reliance-securities.com*

### Aji Setiawan

*aji@reliance-securities.com*

### Shanti Dwi Jayanti

*santi@reliance-securities.com*

Senior Analyst

Research Analyst

Technical Research Analyst

Associate Research Analyst

Associate Research Analyst

## EQUITY DIVISION

### Jakarta- Pluit

Jl. Pluit Sakti Raya No. 27AB,  
Pluit  
Jakarta 14450  
T. +62 21 661 7768  
F. +62 21 661 9884

### Bandung

Jl.Cisangkuy No.58  
Bandung 40115  
T. +62 22 721 8200  
F. +62 22 721 9255

### Surabaya - Gubeng

Jl. Bangka No. 22  
Surabaya 60281  
T. +62 31 501 1128  
F. +62 31 503 3196

### Makassar

Jl. Boto Lempangan No. 34 J  
Makassar- Sulawesi Selatan  
T. +62 411 3632388  
F. +62 411 3614634

### Jakarta - Sudirman

Menara Batavia Ground Floor  
Jl.KH.Mas Mansyur Kav 126  
Jakarta 10220  
T. +62 21 57905455  
F. +62 21 57950728

### Tasikmalaya

Ruko Tasik Indah Plaza No.21  
Jl. KHZ Mustofa No. 345  
Tasikmalaya 46121  
T. +62 265 345000  
F. +62 265 345003

### Surabaya - Diponegoro

Jl. Diponegoro No.26D  
Surabaya 60261  
T. +62 31 567 0388  
F. +62 31 561 0528

### Medan

Jl. Teuku Amir Hamzah No.40-O  
Medan 20117  
T. +62 61 6638592  
F. +62 61 6638023

### Jakarta - Kebon Jeruk

Plaza Kebon Jeruk  
Jl.Raya Perjuangan Blok A/2  
Jakarta 11530  
T. +62 21 532 4074  
F. +62 21 536 2157

### Malang

Jl. Guntur No. 19  
Malang 65112  
T. +62 341 347 611  
F. +62 341 347 615

### Bali - Denpasar

Dewata Square Blok A3  
Jl. Letda Tantular Renon  
Denpasar 802361  
T. +62 361 225099  
F. +62 361 245099

### Tangerang

Jl. Pahlawan Seribu Ruko BSD  
Sektor 7 Blok RK kav. 9  
Tangerang 15310  
T. +62 21 5387495  
F. +62 21 5387494

### Pekanbaru

Jl. Jendral Sudirman No.73  
Pekanbaru-Riau  
T. +62 761 848414  
F. +62 761 849456

### Pontianak

Jl. MT Haryono No. 6  
Pontianak 78121  
T. +62 561 575674  
F. +62 561 575670

### Jakarta - Centro

Ruko Centro Residence Kav. 4-5  
Tower C Lt. 1 No. 26-29  
Jl. Macan, Daan Mogot  
Jakarta 14450  
T. +62 21 56945227  
F. +62 21 56945226

### Solo

Jl. Slamet Riyadi 330<sup>a</sup>  
Solo 57145  
T. +62 271 736599  
F. +62 271 733478

### Balikpapan

Ruko Bukit Damai Indah  
Blok I, No. 3, Rt.34  
Jl. MT. Haryono, Gunung  
Bahagia, Balikpapan Selatan  
76114  
T. +62 542 746313  
F. +62 542 746317

## IDX CORNER & INVESTMENT GALLERY

### President University

Resto Plaza 1F - Jababeka  
Education Park  
Jl. Ki Hajar Dewantara Raya  
Cikarang - Bekasi 17550  
T. +62 21 89106030

### Universitas Siliwangi Tasikmalaya

Jl. Siliwangi No. 24  
Tasikmalaya 46151  
T. +62 265 323685  
F. +62 265 323534

### Politeknik Kediri

Jl. Mayor Bismo No. 27  
Kediri 64121  
T. +62 354 683128  
F. +62 354 683128

### Universitas Muhammadiyah Sidoarjo

Jl. Majapahit 666 B  
Sidoarjo, Jawa Timur  
T. +62 31 8945444  
F. +62 31 8949333

### Universitas Tanjungpura Pontianak

Jl. Jendral Ahmad Yani  
Pontianak 78124  
T. +62 561 743465  
F. +62 561 766840

### Universitas Pesantren Tinggi Darul Ulum

Kompleks Pp Darul Ulu,  
Peterongan  
Jombang, Jawa Timur 60281  
T. +62 321 873655  
F. +62 321 875771

### STIE "AUB" Surakarta

Jl. Mr. Sartono 97, Cengklik  
Nusukan, Surakarta 57135  
T. +62 271 854803  
F. +62 271 853084

### Universitas Surabaya

Jl. Raya Kalirungkut  
Surabaya 60293  
T. +62 31 298 1203  
F. +62 31 298 1204

### Universitas Muhammadiyah Gresik

Jl. Sumatra 101 GKB  
Gresik 61121  
T. +62 31 395 1414  
F. +62 31 395 2585

### Universitas Negeri Malang

Jl. Surabaya No. 6  
Malang 65145  
T. +62 341 585914  
F. +62 341 55288

### Universitas Muhammadiyah Malang

Jl. Raya Tlogomas 246  
Malang 65144  
T. +62 341 464318-9  
F. +62 341 460782

### FSEI IAIN Antasari

Jl. Ahmad Yani Km. 4,5  
Banjarmasin  
T. + 62 511 3265783

### STIE Malangkececwara

Jl. Terusan Candi Kalasan  
Malang 65142  
T. +62 341 491813  
F. +62 341 495619

### STIESIA Surabaya

Jl. Menur Pumpungan 30  
Surabaya  
T. +62 31 5947505  
F. +62 31 5932218

### Universitas 17 Agustus 1945 Banyuwangi

Jl. Adi Sucipto 26  
Banyuwangi, Jawa Timur  
T. +62 333 419613  
F. +62 333 419163

### STIE Tri Bhakti

Jl. Teuku Umar No. 24  
Cut Meutia Setiakawan,  
Bekasi  
T. +62 21 82429400,  
82429500  
F. +62 271 726156

### Universitas Islam Kalimantan

Jl. Adiyaksa No. 2, Kayu  
Tangi, Banjarmasin  
T. + 62 511 3303871  
F. + 62 511 3303871

### STIKOM Bali

Jalan Puputan No. 86, Renon,  
Denpasar  
T. +62361 244445  
F. +62361 264773

### Universitas Muhammadiyah Pontianak

Fakultas Ekonomi UM  
Pontianak  
Jl. Ahmad Yani, No. 111,  
Pontianak 78124  
T. +62561 743465  
F. +62561 766840

### Universitas Negeri Makassar

Fakultas Ekonomi Gedung BT  
Lt.2  
Jl. A.P. Pettarani, Kampus  
UNM, Gunungsari Baru  
Makassar 90222  
T. +62 411 889464 / 881244  
F. +62 411 887604

### STIE AAS Surakarta

Jl. Slamet Riyadi No. 361,  
Kartasura, Surakarta  
T. +62 271 726156  
F. +62 271 726156

### UPN "Veteran" Yogyakarta

Jl. Babarsari 2, Tambak Bayan  
Yogyakarta  
T. +62 274 485268  
F. +62 274 487147

### Disclaimer:

Information, opinions and recommendations contained in this document are presented by PT Reliance Securities Tbk. from sources that are considered reliable and dependable. This document is not an offer, invitation or any kind of representations to decide to buy or sell stock. Investment decisions taken based on this document is not the responsibility of PT Reliance Securities Tbk. PT Reliance Securities Tbk. reserves the right to change the contents of this document at any time without prior notice.