

## IHSG



5358.68  
17.69  
0.33%

Vol (Mn): 19,309  
Val (Bn): 6,570

## LQ45



891.78  
5.44  
0.61%

Sector Indices	Last	Change	Change %
Agriculture	1834.44	(34.56)	(1.88)
Basic Industry	564.54	(1.53)	(0.27)
Consumer	2355.23	19.59	0.83
Finance	830.28	3.34	0.40
Infrastructure	1060.05	2.27	0.21
Manufacture	1386.72	7.84	0.57
Mining	1420.93	1.19	0.08
Misc Industry	1338.27	7.72	0.58
Property	520.02	0.29	0.06
Trade	855.55	2.38	0.28

Source: relitrade next G

Most Active	Last	Change %	Freq
BUMI	368	25.2	32,954
ELTY	57	14.0	27,343
DEWA	70	34.6	12,125
BNLI	700	2.9	11,089
TIFA	154	(8.3)	9,981

Most Volume	Last	Change %	M share
ELTY	57	14.0	52,340
BUMI	368	25.2	27,389
DEWA	70	34.6	25,789
MYRX	122	(2.4)	22,043
BRMS	89	34.8	18,561

Most Value	Last	Change %	Rp Bil
BUMI	368	25.2	848.06
BMRI	11,300	1.3	298.43
TLKM	3,880	0.0	287.64
ELTY	57	14.0	285.19
MYRX	122	(2.4)	273.93

Source: relitrade next G

## IHSG Technical Review



R3	5700
R2	5540
R1	5400
Last	5358.68
S1	5280
S2	5175
S3	5100

### Comment:

Bearish consolidations at MA25 support level.

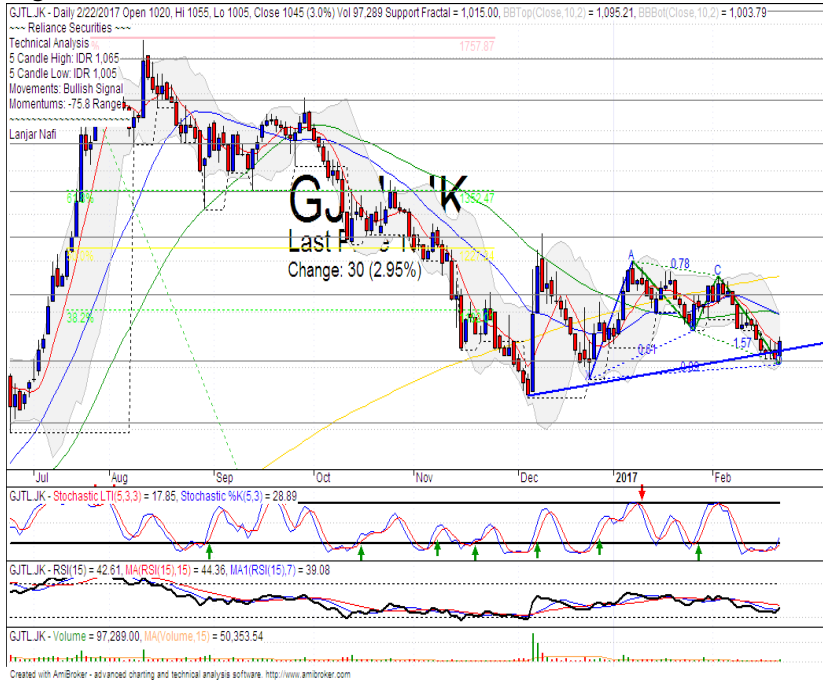
Stochastic, bearish movement at oversold.

RSI broke the MA support of momentum at middle oscillator.

Long term bullish trend movement.

Stop-loss level if broke the MA25 support level at 5310. Downside potential until 5285 (MA50 support level).

## GJTL



R3	1355
R2	1250
R1	1135
Last	1045
S1	1000
S2	910
S3	800

**TRADING BUY**

### Comment:

Above the stomach candlestick pattern. Huge trading volume. Reversal at bullish trend support level indications.

Stochastic, golden-cross at oversold oscillator, broad upside potential.

RSI bullish reversal momentum at oversold oscillator.

Medium term bullish trend movement.

Upside target to 1170 (MA200 resistance level). Stop-loss level if broke the bullish trend line support level at 1020.

## RALS



R3	1515
R2	1410
R1	1325
Last	1315
S1	1235
S2	1150
S3	1070

**TRADING BUY**

### Comment:

Bullish harami candlestick pattern after touching the MA50 support level. Reversal signal.

Stochastic golden-cross at oversold oscillator. Broad upside potential.

RSI Consolidations momentum at near overbought oscillator.

Medium term bullish trend movement.

Upside target to 61.8% of Fibonacci level at 1430. Stop-loss level at 1270 (false confirmations level).



Stocks	S2	S1	Closing Price	R1	R2	Technical Notes	Rec	Stop Loss	Rec Buy Prc	Target Price
<b>Plantation</b>										
AALI	13,000	14,000	14,775	14,900	15,850	Bearish momentum	W	14,500		
LSIP	1,400	1,475	1,510	1,545	1,630	Oversold	W	1,500		
<b>Mining</b>										
INCO	2,500	2,670	2,670	2,870	3,040	Bearish momentum	PS	2,650		
<b>Consumer</b>										
UNVR	41,000	42,500	42,875	44,000	46,000	Bullish consolidations	H	42,400		43,200
INDF	7,250	7,900	8,125	8,500	9,125	Tweezers Top	PS	7,850		
KLBF	1,420	1,485	1,495	1,540	1,600	Bullish consolidations	TB	1,480		1,540
<b>Trading</b>										
ACES	710	755	785	810	870	Consolidations	W	750		
AKRA	6,100	6,100	6,350	6,600	6,925	Bullish momentum	B	6,200	6,300	6,600
UNTR	22,500	24,000	24,375	25,325	26,700	Overbought	H	24,200		25,000
<b>Property &amp; Construction</b>										
LPCK	4,600	4,820	4,830	5,125	5,420	Consolidations	TB	4,800		5,100
WIKA	2,200	2,400	2,480	2,600	2,800	Sideways	W	2,480		
BSDE	1,720	1,830	1,905	1,935	2,030	Overbought	H	1,820		1,935
WSKT	2,260	2,410	2,470	2,600	2,800	Oversold	W	2,400		
ADHI	1,850	1,950	2,160	2,200	2,300	Bearish momentum	S	2,100		
<b>Basic Industry &amp; Chemical</b>										
SMGR	8,150	8,725	9,225	9,350	9,900	Stoch golden-cross	SB	9,100	9,200	9,800
CPIN	2,850	3,000	3,180	3,210	3,400	Bearish momentum	PS	3,000		
MAIN	1,050	1,180	1,215	1,300	1,400	Bearish momentum	PS	1,200		
INTP	14,600	15,500	15,650	16,350	17,550	Consolidations	W	15,500		
<b>Miscellaneous</b>										
SRIL	250	276	274	288	316	Bearish momentum	PS	274		
ASII	7,500	7,850	7,975	8,250	8,650	Rectangle	TB	7,800		8,150
<b>Finance</b>										
BBTN	2,100	2,200	2,240	2,360	2,480	Overbought	H	2,180		2,360
BMRI	10,750	11,000	11,300	11,450	11,800	Consolidations	H	11,000		11,600
BTPN	2,340	2,550	2,610	2,770	3,000	Bearish momentum	PS	2,540		
BJBR	2,140	2,210	2,300	2,470	2,760	Sideways	TB	2,200		2,570
BBRI	11,100	11,725	12,000	12,300	13,000	Consolidations	H	11,700		12,300
<b>Infrastructure</b>										
TLKM	3,510	3,710	3,880	3,950	4,200	Sideways	W	3,700		
PGAS	2,360	2,560	2,690	2,800	3,050	Consolidations at MA200	TB	2,550		2,800

Source : Reliance Securities

### Analyst Conclusions:

The index has bearish movement and arrived at overbought area.

Legend :

- B: BUY (allocate till 100% of the weighted capital to accumulate, higher than 50% upside probability)
- SB: SPECULATIVE BUY (allocate 25%-50% of the weighted capital to accumulate, 25%-50% upside probability)
- W: WAIT (wait for proper entry level, do the stop-loss if necessary)
- H: HOLD (hold the portfolio position, aim for the best price to distribute)
- PS: PARTIAL SELL (distribute 25%-50% part of the portfolio, 25%-50% downside probability)
- S: SELL (distribute till 100% of the portfolio, higher than 50% downside probability)
- TB: TRADING BUY (short term or intraday trading within a tight trading range. Highly speculative).

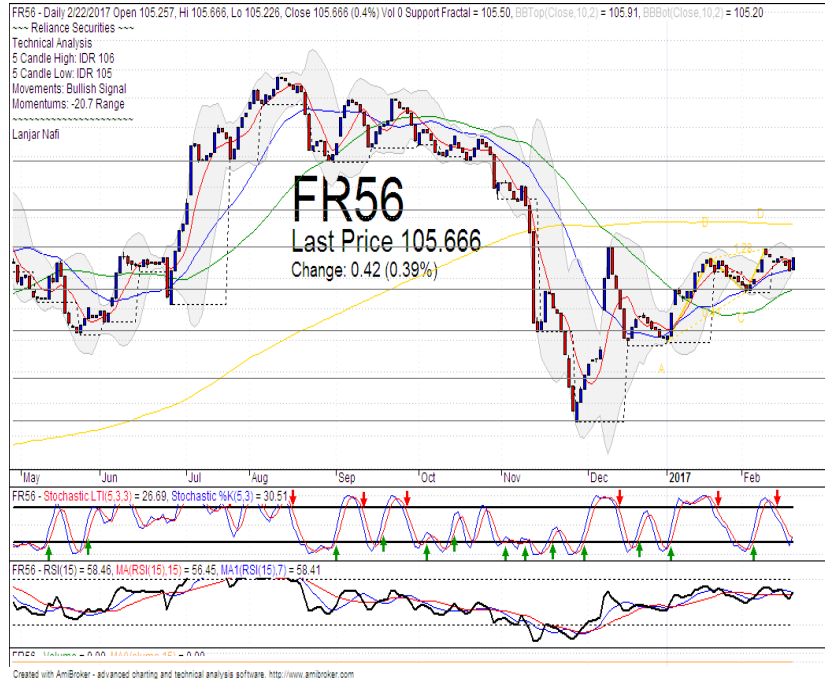
Ticker	Resistance Fractal	Price 2/22/2017	Support Fractal	Weekly High	Weekly Low	Indicator			Moving Average			
						Stochastic	RSI	B. Band	25 Days	50 Days	200 Days	
AALJ.K	16,275	14,775	15,475	15,800	15,225	Oversold	Bearish	Oversold	Lower Bands	Under	Under	Under
ACES.JK	800	785	765	795	785	Neutral	Bullish	Neutral	Middle Bands	Upper	Upper	Under
ADHI.JK	2,350	2,160	2,160	2,310	2,220	Neutral	Bearish	Neutral	Middle Bands	Upper	Upper	Under
ADRO.JK	1,755	1,705	1,615	1,725	1,700	Neutral	Bullish	Neutral	Middle Bands	Under	Upper	Upper
AISA.JK	2,000	1,985	1,945	2,020	1,980	Neutral	Bullish	Neutral	Middle Bands	Upper	Upper	Upper
AKRA.JK	6,750	6,350	6,100	6,625	6,225	Oversold	Bullish	Neutral	Middle Bands	Under	Upper	Under
ANTM.JK	820	785	780	810	800	Oversold	Bullish	Neutral	Middle Bands	Under	Under	Under
APLN.JK	228	224	224	246	228	Oversold	Bearish	Neutral	Middle Bands	Under	Upper	Under
ASII.JK	8,150	7,975	7,850	8,150	7,975	Neutral	Bullish	Neutral	Middle Bands	Under	Upper	Upper
ASRI.JK	398	378	384	392	382	Oversold	Bullish	Neutral	Lower Bands	Under	Upper	Under
BBCA.JK	15,700	15,500	15,350	15,600	15,525	Neutral	Bearish	Neutral	Middle Bands	Upper	Upper	Upper
BBKP.JK	630	605	605	620	610	Oversold	Bearish	Neutral	Middle Bands	Under	Under	Under
BBNI.JK	6,325	6,275	6,125	6,300	6,275	Neutral	Bullish	Overbought	Middle Bands	Upper	Upper	Upper
BBRI.JK	12,125	12,000	11,650	12,000	11,850	Neutral	Bullish	Neutral	Middle Bands	Upper	Upper	Upper
BBTN.JK	1,835	2,240	1,875	2,280	2,170	Overbought	Bearish	Overbought	Upper Bands	Upper	Upper	Upper
BDMN.JK	5,100	5,000	4,410	5,100	4,840	Overbought	Bearish	Overbought	Middle Bands	Upper	Upper	Upper
BHIT.JK	146	131	130	141	131	Oversold	Bullish	Neutral	Middle Bands	Under	Under	Under
BIBR.JK	2,360	2,300	2,270	2,390	2,310	Neutral	Bearish	Neutral	Middle Bands	Under	Under	Upper
BJTM.JK	650	550	570	580	555	Oversold	Bearish	Neutral	Middle Bands	Under	Under	Upper
BKSL.JK	95	97	94	104	97	Neutral	Bearish	Neutral	Middle Bands	Upper	Upper	Upper
BMRI.JK	11,075	11,300	10,900	11,350	11,200	Neutral	Bullish	Neutral	Middle Bands	Upper	Upper	Upper
BMRJ.JK	630	530	590	590	550	Oversold	Bearish	Oversold	Lower Bands	Under	Under	Under
BSDE.JK	1,920	1,905	1,825	1,905	1,900	Neutral	Bullish	Neutral	Middle Bands	Upper	Upper	Under
BTPN.JK	2,650	2,610	2,500	2,670	2,640	Neutral	Bearish	Neutral	Middle Bands	Upper	Upper	Under
BWPT.JK	398	368	344	386	366	Neutral	Bullish	Neutral	Middle Bands	Upper	Upper	Upper
CMNP.JK	1,515	1,475	1,470	1,500	1,485	Oversold	Bullish	Neutral	Lower Bands	Under	Under	Under
CPIN.JK	3,550	3,180	3,100	3,530	3,230	Neutral	Bearish	Neutral	Middle Bands	Under	Under	Under
CSAP.JK	515	500	492	500	500	Neutral	Bullish	Neutral	Middle Bands	Under	Under	Upper
CTRA.JK	1,450	1,385	1,370	1,425	1,390	Oversold	Bullish	Neutral	Middle Bands	Upper	Upper	Under
CTRP.JK	705	690	680	705	690	Neutral	Bearish	Neutral	Middle Bands	Upper	Under	Upper
CTRS.JK	2,770	2,710	2,640	2,770	2,720	Neutral	Bullish	Neutral	Middle Bands	Upper	Under	Upper
DILD.JK	510	474	444	510	478	Neutral	Bearish	Neutral	Middle Bands	Upper	Under	Under
EXCL.JK	3,090	3,130	2,780	3,250	3,150	Neutral	Bearish	Neutral	Middle Bands	Upper	Upper	Upper
GGRM.JK	62,850	62,200	61,550	62,375	60,525	Oversold	Bullish	Neutral	Middle Bands	Under	Under	Under
GIAA.JK	390	336	338	376	350	Oversold	Bearish	Neutral	Middle Bands	Under	Under	Under
QJTL.JK	1,170	1,045	1,015	1,065	1,035	Oversold	Bullish	Neutral	Middle Bands	Under	Under	Under
HEXA.JK	3,410	3,380	3,170	3,400	3,350	Neutral	Bullish	Neutral	Middle Bands	Upper	Upper	Upper
HRUM.JK	2,110	2,070	1,920	2,220	2,030	Neutral	Bearish	Neutral	Middle Bands	Upper	Under	Upper
ICBP.JK	8,700	8,250	8,425	8,425	8,425	Oversold	Bearish	Neutral	Lower Bands	Under	Under	Under
IMAS.JK	1,350	1,275	1,255	1,315	1,270	Neutral	Bearish	Neutral	Middle Bands	Under	Under	Under
INCO.JK	2,430	2,670	2,750	2,850	2,720	Neutral	Bearish	Neutral	Middle Bands	Upper	Under	Upper
INDF.JK	8,025	8,125	7,950	8,200	8,075	Neutral	Bullish	Neutral	Upper Bands	Upper	Upper	Upper
INDY.JK	785	725	715	770	740	Neutral	Bullish	Neutral	Middle Bands	Under	Under	Upper
INTA.JK	352	332	324	336	332	Overbought	Bearish	Neutral	Middle Bands	Under	Under	Upper
INTP.JK	15,725	15,650	15,350	15,725	15,625	Neutral	Bullish	Neutral	Middle Bands	Upper	Upper	Under
ITMG.JK	15,750	16,325	14,950	16,950	15,400	Neutral	Bullish	Neutral	Upper Bands	Upper	Upper	Upper
JPPA.JK	1,950	1,875	1,695	1,950	1,905	Neutral	Bearish	Neutral	Middle Bands	Upper	Upper	Upper
JSMR.JK	4,280	4,730	4,220	4,800	4,750	Neutral	Bearish	Neutral	Middle Bands	Upper	Upper	Under
KIJA.JK	296	298	290	296	296	Overbought	Bullish	Neutral	Middle Bands	Upper	Upper	Upper
KLBF.JK	1,495	1,495	1,450	1,495	1,470	Neutral	Bullish	Neutral	Upper Bands	Upper	Under	Under
KRAS.JK	745	690	705	740	705	Oversold	Bearish	Neutral	Lower Bands	Under	Under	Under
LPCK.JK	5,425	4,830	4,770	4,860	4,800	Neutral	Bullish	Neutral	Middle Bands	Under	Under	Under
LPKR.JK	775	770	750	785	775	Neutral	Bearish	Neutral	Middle Bands	Upper	Upper	Under
LPPF.JK	15,525	14,750	14,050	15,175	14,425	Neutral	Bullish	Neutral	Middle Bands	Under	Under	Under
LSIP.JK	1,645	1,510	1,540	1,645	1,555	Oversold	Bearish	Neutral	Lower Bands	Under	Under	Under
MAIN.JK	1,365	1,215	1,170	1,310	1,270	Neutral	Bearish	Neutral	Middle Bands	Under	Under	Under
MAPI.JK	5,975	5,550	5,350	5,825	5,600	Neutral	Bearish	Neutral	Middle Bands	Upper	Upper	Upper
MASA.JK	250	214	212	248	214	Neutral	Bearish	Neutral	Lower Bands	Under	Under	Under
MNCN.JK	1,710	1,545	1,495	1,590	1,555	Neutral	Bullish	Neutral	Middle Bands	Under	Under	Under
MPPA.JK	1,480	1,220	1,240	1,330	1,270	Oversold	Bearish	Neutral	Middle Bands	Under	Under	Under
MTLA.JK	274	308	300	310	302	Overbought	Bearish	Neutral	Middle Bands	Upper	Upper	Upper
MYOR.JK	1,895	1,850	1,800	1,900	1,885	Overbought	Bearish	Neutral	Middle Bands	Upper	Upper	Upper
PGAS.JK	2,900	2,690	2,680	2,860	2,720	Oversold	Bearish	Neutral	Middle Bands	Under	Under	Under
FTBA.JK	11,850	11,200	10,625	11,400	10,800	Neutral	Bullish	Neutral	Middle Bands	Under	Under	Upper
RALS.JK	1,510	1,315	1,300	1,380	1,315	Oversold	Bullish	Neutral	Middle Bands	Under	Upper	Upper
ROTI.JK	1,595	1,535	1,515	1,580	1,530	Neutral	Bullish	Neutral	Middle Bands	Under	Under	Upper
SCMA.JK	2,960	2,930	2,780	2,960	2,830	Neutral	Bullish	Neutral	Middle Bands	Upper	Upper	Upper
SGRO.JK	2,050	2,020	1,995	2,050	2,050	Neutral	Bearish	Neutral	Middle Bands	Upper	Upper	Upper
SIMP.JK	525	510	510	525	515	Neutral	Bearish	Neutral	Lower Bands	Under	Upper	Upper
SMCB.JK	915	880	880	910	890	Oversold	Bullish	Neutral	Middle Bands	Under	Under	Under
SMGR.JK	9,875	9,225	9,075	9,575	9,250	Oversold	Bullish	Neutral	Middle Bands	Upper	Upper	Under
SMRA.JK	1,460	1,425	1,300	1,440	1,400	Neutral	Bullish	Neutral	Middle Bands	Upper	Upper	Under
SRIL.JK	310	274	272	300	282	Neutral	Bearish	Neutral	Middle Bands	Upper	Upper	Upper
SSIA.JK	660	560	550	585	565	Neutral	Bullish	Neutral	Middle Bands	Under	Upper	Under
SSMS.JK	1,665	1,530	1,625	1,665	1,630	Neutral	Bearish	Neutral	Lower Bands	Under	Upper	Under
TLKM.JK	3,920	3,880	3,840	3,890	3,880	Neutral	Bullish	Neutral	Middle Bands	Under	Under	Under
TOTL.JK	810	805	795	850	810	Neutral	Bearish	Neutral	Middle Bands	Upper	Upper	Upper
UNTR.JK	24,700	24,375	22,775	24,700	23,825	Overbought	Bullish	Neutral	Middle Bands	Upper	Upper	Upper
UNVR.JK	42,900	42,875	42,050	42,900	42,750	Neutral	Bullish	Neutral	Middle Bands	Upper	Upper	Under

Source : Reliance Research

### Legend :

- Movement: Bullish and Bearish (Indicator Stochastic)
- Momentum: Oversold, Overbought and Neutral (Indicator RSI)
- Resistance Fractal: Strong Resistance
- Support Fractal: Strong Support
- Green: Good Conditions
- Red: Poor Conditions

## FR 56



R3	108.90
R2	107.20
R1	106.00
Last	105.67
S1	104.64
S2	103.27
S3	101.77

**TRADING BUY**

**Comment:**

Broke the MA7 and Rebounded at MA25 support level. Reversal signal.

Stochastic golden-cross at oversold oscillator.

RSI consolidations momentum with limited upside potential.

Medium term bullish trend movement.

Upside target to 106.76 (MA200 resistance target level). Stop-loss level if broke the MA25 support level at 105.20.

## Indonesian Technical Bond

Ticker	Resistance		Price		Support		Weekly		Weekly		Indicator			Moving Average		
	Fractal	2/22/2017	Fractal	2/22/2017	High	Low	Stochastic	RSI	B. Band	25 Days	50 Days	200 Days				
FR34	120.37	120.10	120.18	120.36	120.12	Neutral	Bearish	Neutral	Upper Bands	Under	Under	Under				
FR43	112.62	112.47	112.33	112.62	112.47	Neutral	Neutral	Neutral	Upper Bands	Upper	Upper	Under				
FR47	115.82	115.45	115.11	115.73	115.50	Neutral	Bearish	Neutral	Upper Bands	Upper	Upper	Under				
FR53	103.90	103.58	103.74	103.90	103.60	Neutral	Bearish	Neutral	Upper Bands	Under	Upper	Under				
FR54	112.47	111.98	111.95	112.24	112.01	Neutral	Bearish	Neutral	Upper Bands	Upper	Upper	Under				
FR56	105.71	105.67	105.50	105.71	105.56	Neutral	Bullish	Neutral	Upper Bands	Upper	Upper	Under				
FR58	102.50	101.53	101.32	102.50	101.55	Neutral	Bearish	Neutral	Upper Bands	Upper	Upper	Under				
FR59	96.50	96.18	96.27	96.50	96.20	Neutral	Bullish	Neutral	Lower Bands	Under	Upper	Under				
FR64	87.00	86.72	86.43	87.00	86.80	Neutral	Bearish	Neutral	Upper Bands	Upper	Upper	Under				
FR66	98.71	98.63	98.49	98.71	98.63	Neutral	Bearish	Neutral	Upper Bands	Upper	Upper	Upper				
FR68	102.72	102.56	102.01	102.72	102.57	Oversold	Bearish	Neutral	Upper Bands	Upper	Upper	Under				
FR69	102.02	101.82	101.87	101.97	101.85	Neutral	Bearish	Neutral	Upper Bands	Under	Upper	Under				
FR70	104.58	104.35	103.60	104.58	104.35	Neutral	Bearish	Neutral	Middle Bands	Upper	Upper	Under				
FR71	107.94	107.63	107.83	107.94	107.66	Neutral	Bearish	Neutral	Upper Bands	Under	Upper	Under				
FR72	102.14	101.39	100.89	101.59	101.39	Oversold	Bullish	Neutral	Lower Bands	Under	Under	Under				
FR73	107.08	106.24	105.42	106.88	106.28	Neutral	Bearish	Neutral	Middle Bands	Under	Under	Under				
ORI13	98.21	98.44	98.07	98.44	98.15	Overbought	Bullish	Neutral	Middle Bands	Upper	Upper	Upper				
ORI12	103.62	103.48	103.45	103.60	103.49	Neutral	Bearish	Neutral	Lower Bands	Under	Upper	Under				
SR06	100.28	100.16	100.11	100.28	100.18	Neutral	Bearish	Oversold	Lower Bands	Under	Under	Under				
SR08	102.77	102.42	102.61	102.79	102.52	Oversold	Bearish	Neutral	Lower Bands	Under	Upper	Under				

Analyst: Lanjar Nafi, lanjar@reliance-securities.com

Source: Reliance Research

**Legend :**

- Movement: Bullish and Bearish (Indicator Stochastic)
- Momentum: Oversold, Overbought and Neutral (Indicator RSI)
- Resistance Fractal: Strong Resistance
- Support Fractal: Strong Support
- Green: Good Conditions
- Red: Poor Conditions

## HEAD OFFICE

### Reliance Building

Jl. Pluit Sakti Raya No. 27AB,  
Pluit  
Jakarta 14450  
T. +62 21 661 7768  
F. +62 21 661 9884

## EQUITY DIVISION

### Jakarta- Pluit

Jl. Pluit Sakti Raya No. 27AB,  
Pluit  
Jakarta 14450  
T. +62 21 661 7768  
F. +62 21 661 9884

### Jakarta - Sudirman

Menara Batavia Ground Floor  
Jl.KH.Mas Mansyur Kav 126  
Jakarta 10220  
T. +62 21 57905455  
F. +62 21 57950728

### Jakarta – Kebon Jeruk

Plaza Kebon Jeruk  
Jl.Raya Perjuangan Blok A/2  
Jakarta 11530  
T. +62 21 532 4074  
F. +62 21 536 2157

### Tangerang

Jl. Pahlawan Seribu Ruko BSD  
Sektor 7 Blok RK kav. 9  
Tangerang 15310  
T. +62 21 5387495  
F. +62 21 5387494

### Jakarta – Centro

Ruko Centro Residence Kav. 4-5  
Tower C Lt. 1 No. 26-29  
Jl. Macan, Daan Mogot  
Jakarta 14450  
T. +62 21 56945227  
F. +62 21 56945226

### Bandung

Jl.Cisangkuy No.58  
Bandung 40115  
T. +62 22 721 8200  
F. +62 22 721 9255

### Tasikmalaya

Ruko Tasik Indah Plaza No.21  
Jl. KHZ Mustofa No. 345  
Tasikmalaya 46121  
T. +62 265 345000  
F. +62 265 345003

### Malang

Jl. Guntur No. 19  
Malang 65112  
T. +62 341 347 611  
F. +62 341 347 615

### Pekanbaru

Jl. Jendral Sudirman No.73  
Pekanbaru-Riau  
T. +62 761 848414  
F. +62 761 849456

### Solo

Jl. Slamet Riyadi 330<sup>a</sup>  
Solo 57145  
T. +62 271 736599  
F. +62 271 733478

## RESEARCH DIVISION

### Robertus Yanuar Hardy

*robertus@reliance-securities.com*

### Rio Adrianus

*rio.adrianus@reliance-securities.com*

### Lanjar Nafi Taulat I

*lanjar@reliance-securities.com*

### Aji Setiawan

*aji@reliance-securities.com*

### Shanti Dwi Jayanti

*santi@reliance-securities.com*

Senior Analyst

Research Analyst

Technical Research Analyst

Associate Research Analyst

Associate Research Analyst

### Surabaya - Gubeng

Jl. Bangka No. 22  
Surabaya 60281  
T. +62 31 501 1128  
F. +62 31 503 3196

### Surabaya – Diponegoro

Jl. Diponegoro No.26D  
Surabaya 60261  
T. +62 31 567 0388  
F. +62 31 561 0528

### Bali - Denpasar

Dewata Square Blok A3  
Jl. Letda Tantular Renon  
Denpasar 802361  
T. +62 361 225099  
F. +62 361 245099

### Pontianak

Jl. MT Haryono No. 6  
Pontianak 78121  
T. +62 561 575674  
F. +62 561 575670

### Balikpapan

Ruko Bukit Damai Indah  
Blok I, No. 3, Rt.34  
Jl. MT. Haryono, Gunung  
Bahagia, Balikpapan Selatan  
76114  
T. +62 542 746313  
F. +62 542 746317

### Makassar

Jl. Boto Lempangan No. 34 J  
Makassar- Sulawesi Selatan  
T. +62 411 3632388  
F. +62 411 3614634

### Medan

Jl. Teuku Amir Hamzah No.40-O  
Medan 20117  
T. +62 61 6638592  
F. +62 61 6638023

## IDX CORNER & INVESTMENT GALLERY

### President University

Resto Plaza 1F - Jababeka  
Education Park  
Jl. Ki Hajar Dewantara Raya  
Cikarang - Bekasi 17550  
T. +62 21 89106030

### Universitas Siliwangi Tasikmalaya

Jl. Siliwangi No. 24  
Tasikmalaya 46151  
T. +62 265 323685  
F. +62 265 323534

### Politeknik Kediri

Jl. Mayor Bismo No. 27  
Kediri 64121  
T. +62 354 683128  
F. +62 354 683128

### Universitas Muhammadiyah Sidoarjo

Jl. Majapahit 666 B  
Sidoarjo, Jawa Timur  
T. +62 31 8945444  
F. +62 31 8949333

### Universitas Tanjungpura Pontianak

Jl. Jendral Ahmad Yani  
Pontianak 78124  
T. +62 561 743465  
F. +62 561 766840

### Universitas Pesantren Tinggi Darul Ulum

Kompleks Pp Darul Ulu,  
Peterongan  
Jombang, Jawa Timur 60281  
T. +62 321 873655  
F. +62 321 875771

### STIE "AUB" Surakarta

Jl. Mr. Sartono 97, Cengklik  
Nusukan, Surakarta 57135  
T. +62 271 854803  
F. +62 271 853084

### Universitas Surabaya

Jl. Raya Kalirungkut  
Surabaya 60293  
T. +62 31 298 1203  
F. +62 31 298 1204

### Universitas Muhammadiyah Gresik

Jl. Sumatra 101 GKB  
Gresik 61121  
T. +62 31 395 1414  
F. +62 31 395 2585

### Universitas Negeri Malang

Jl. Surabaya No. 6  
Malang 65145  
T. +62 341 585914  
F. +62 341 55288

### Universitas Muhammadiyah Malang

Jl. Raya Tlogomas 246  
Malang 65144  
T. +62 341 464318-9  
F. +62 341 460782

### FSEI IAIN Antasari

Jl. Ahmad Yani Km. 4,5  
Banjarmasin  
T. + 62 511 3265783

### STIE Malangkececwara

Jl. Terusan Candi Kalasan  
Malang 65142  
T. +62 341 491813  
F. +62 341 495619

### STIESIA Surabaya

Jl. Menur Pumpungan 30  
Surabaya  
T. +62 31 5947505  
F. +62 31 5932218

### Universitas 17 Agustus 1945 Banyuwangi

Jl. Adi Sucipto 26  
Banyuwangi, Jawa Timur  
T. +62 333 419613  
F. +62 333 419163

### STIE Tri Bhakti

Jl. Teuku Umar No. 24  
Cut Meutia Setiakawan,  
Bekasi  
T. +62 21 82429400,  
82429500  
F. +62 271 726156

### Universitas Islam Kalimantan

Jl. Adiyaksa No. 2, Kayu  
Tangi, Banjarmasin  
T. + 62 511 3303871  
F. + 62 511 3303871

### STIKOM Bali

Jalan Puputan No. 86, Renon,  
Denpasar  
T. +62361 244445  
F. +62361 264773

### Universitas Muhammadiyah Pontianak

Fakultas Ekonomi UM  
Pontianak  
Jl. Ahmad Yani, No. 111,  
Pontianak 78124  
T. +62561 743465  
F. +62561 766840

### Universitas Negeri Makassar

Fakultas Ekonomi Gedung BT  
Lt.2  
Jl. A.P. Pettarani, Kampus  
UNM, Gunungsari Baru  
Makassar 90222  
T. +62 411 889464 / 881244  
F. +62 411 887604

### STIE AAS Surakarta

Jl. Slamet Riyadi No. 361,  
Kartasura, Surakarta  
T. +62 271 726156  
F. +62 271 726156

### UPN "Veteran" Yogyakarta

Jl. Babarsari 2, Tambak Bayan  
Yogyakarta  
T. +62 274 485268  
F. +62 274 487147

### Disclaimer:

Information, opinions and recommendations contained in this document are presented by PT Reliance Securities Tbk. from sources that are considered reliable and dependable. This document is not an offer, invitation or any kind of representations to decide to buy or sell stock. Investment decisions taken based on this document is not the responsibility of PT Reliance Securities Tbk. PT Reliance Securities Tbk. reserves the right to change the contents of this document at any time without prior notice.