

IHSG



5385.91
13.16
0.24%

Vol (Mn): 11,893
Val (Bn): 6,206

LQ45



895.86
2.75
0.31%

Sector Indices	Last	Change	Change %
Agriculture	1841.22	10.98	0.60
Basic Industry	565.55	5.19	0.92
Consumer	2374.99	14.54	0.61
Finance	829.58	(0.57)	(0.07)
Infrastructure	1062.68	(2.77)	(0.26)
Manufacture	1399.59	10.49	0.75
Mining	1419.62	(11.02)	(0.78)
Misc Industry	1365.62	14.07	1.03
Property	517.05	(2.46)	(0.48)
Trade	871.47	6.47	0.74

Source: relitrade next G

Most Active	Last	Change %	Freq
TRAM	125	(34.2)	23,381
BUMI	332	(7.8)	12,785
BABP	67	0.0	12,737
DGIK	153	18.6	11,914
ELTY	50	(3.8)	10,251

Most Volume	Last	Change %	M share
ELTY	50	(3.8)	25,003
MYRX	131	4.8	20,216
BUMI	332	(7.8)	9,485
TRAM	125	(34.2)	9,091
DEWA	74	(5.1)	8,395

Most Value	Last	Change %	Rp Bil
BUMI	332	(7.8)	334.10
TKLM	3,840	0.0	273.76
MYRX	131	4.8	255.50
ASII	8,125	0.9	218.46
AGRO	980	0.5	182.57

Source: relitrade next G

IHSG Technical Review



R3	5700
R2	5540
R1	5400
Last	5372.75
S1	5280
S2	5175
S3	5100

Comment:

Bullish momentum after broke the MA7 resistance level.

Stochastic, Limited bullish movement at near overbought oscillator.

RSI consolidations at middle oscillator.

Long term bullish trend movement.

Upside target to 5400. Stop-loss level if broke the MA25 support level at 5310. Downside potential until 5285 (MA50 support level).

AAJI



R3	17650
R2	16700
R1	15900
Last	14975
S1	14900
S2	14000
S3	13000
SPECULATIVE BUY	

Comment:

Bullish separating line and whipsaw at support level. Reversal signal.

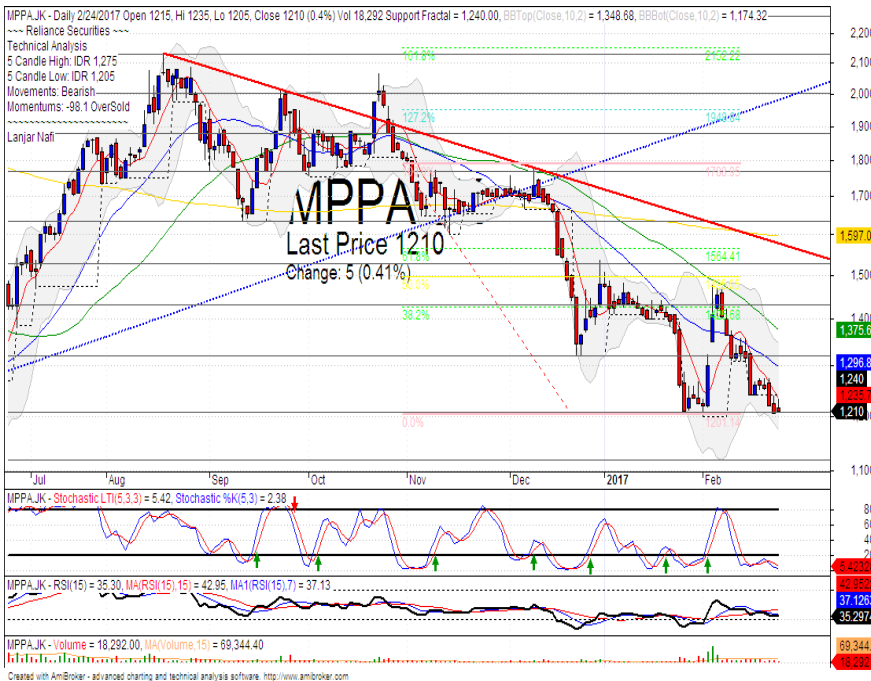
Stochastic, golden-cross at oversold oscillator, broad upside potential.

RSI bullish reversal momentum at near oversold oscillator.

Medium term bearish trend movement.

Upside target to MA200 resistance level at 15650. Stop-loss level if broke the support level at 14700.

MPPA



R3	1530
R2	1430
R1	1320
Last	1210
S1	1200
S2	1120
S3	1060
TRADING BUY	

Comment:

Bullish homing pigeon. Reversal signal. Moderate trading volume.

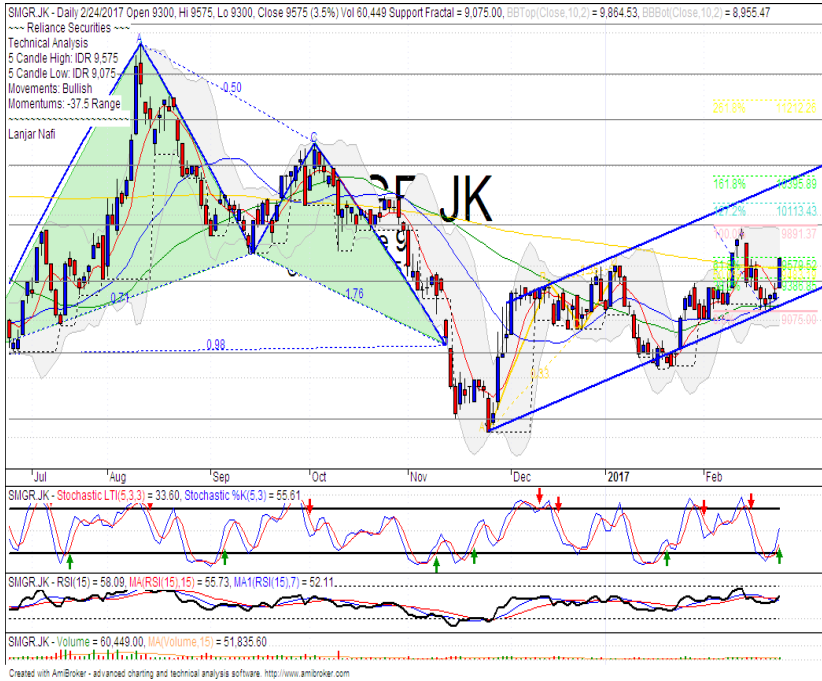
Stochastic golden-cross at oversold oscillator. Broad upside potential.

RSI Consolidations momentum at near overbought oscillator.

Long term bearish trend movement.

Upside target to MA50 resistance level at 1375. Stop-loss level at 1190 (Broke the support level).

SMGR



Stocks	S2	S1	Closing Price	R1	R2	Technical Notes	Rec	Stop Loss	Rec Buy Prc	Target Price
Plantation										
AALI	14,000	14,900	14,975	15,850	16,700	Bullish separating line	TB	14,500		15,850
LSIP	1,400	1,475	1,500	1,545	1,630	Oversold	W	1,470		
Mining										
INCO	2,120	2,300	2,460	2,500	2,670	Bearish momentum	S	2,450		
Consumer										
UNVR	39,800	41,000	42,250	42,500	44,000	Consolidations	PS	42,400		
INDF	7,250	7,900	8,100	8,500	9,125	Bearish momentum	PS	7,850		
KLBF	1,420	1,485	1,495	1,540	1,600	Rebounded at bullish trend	SB	1,480	1,490	1,540
Trading										
ACES	710	755	775	810	870	Pulled back bearish trend	PS	750		
AKRA	6,100	6,100	6,775	6,600	6,925	Bullish momentum	H	6,200	6,500	6,800
UNTR	22,500	24,000	25,500	25,325	26,700	Overbought	H	24,200		25,000
Property & Construction										
LPCK	4,600	4,820	4,740	5,125	5,420	Consolidations	TB	4,800		5,100
WIKA	2,200	2,400	2,500	2,600	2,800	Sideways	H	2,480		2,600
BSDE	1,720	1,830	1,900	1,935	2,030	Overbought	H	1,820		1,935
WSKT	2,260	2,410	2,470	2,600	2,800	Stoch golden-cross	W	2,400		
ADHI	1,850	1,950	2,180	2,200	2,300	Bearish momentum	S	2,100		
Basic Industry & Chemical										
SMGR	8,150	8,725	9,575	9,350	9,900	Stoch golden-cross	SB	9,100	9,200	9,800
CPIN	2,850	3,000	3,270	3,210	3,400	Bearish momentum	W	3,000		
MAIN	1,050	1,180	1,235	1,300	1,400	Oversold	PS	1,200		
INTP	14,600	15,500	15,650	16,350	17,550	Consolidations	W	15,500		
Miscellaneous										
SRIL	250	276	302	288	316	Consolidations	W	274		
ASII	7,500	7,850	8,125	8,250	8,650	Rectangle	TB	7,800		8,150
Finance										
BBTN	2,100	2,200	2,150	2,360	2,480	Dark cloud cover	PS	2,180		
BMRI	10,750	11,000	11,100	11,450	11,800	Consolidations	TB	11,000		11,600
BTPN	2,340	2,550	2,700	2,770	3,000	Bullish momentum	H	2,540		2,770
BJBR	2,140	2,210	2,300	2,470	2,760	Sideways	TB	2,200		2,570
BBRI	11,100	11,725	11,950	12,300	13,000	Consolidations	H	11,700		12,300
Infrastructure										
TLKM	3,510	3,710	3,840	3,950	4,200	Sideways	W	3,700		
PGAS	2,560	2,800	2,860	3,050	3,350	Bullish momentum	H	2,780		3,000

Source : Reliance Securities

Analyst Conclusions:

The index rebounded at support level but having limited momentum.

Legend :

- B: BUY (allocate till 100% of the weighted capital to accumulate, higher than 50% upside probability)
- SB: SPECULATIVE BUY (allocate 25%-50% of the weighted capital to accumulate, 25%-50% upside probability)
- W: WAIT (wait for proper entry level, do the stop-loss if necessary)
- H: HOLD (hold the portfolio position, aim for the best price to distribute)
- PS: PARTIAL SELL (distribute 25%-50% part of the portfolio, 25%-50% downside probability)
- S: SELL (distribute till 100% of the portfolio, higher than 50% downside probability)
- TB: TRADING BUY (short term or intraday trading within a tight trading range. Highly speculative).

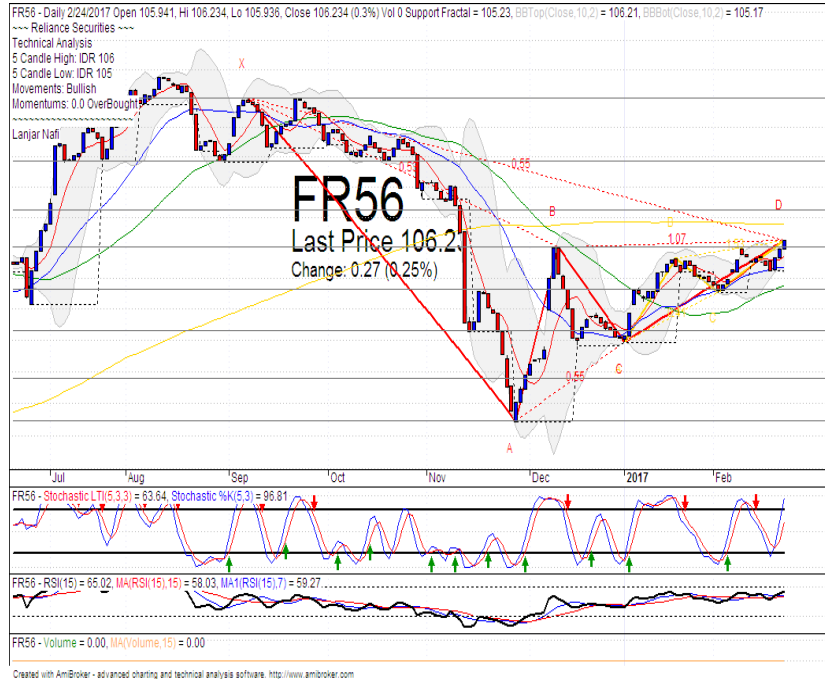
Ticker	Resistance Fractal	Price 2/24/2017	Support Fractal	Weekly High	Weekly Low	Indicator			Moving Average			
						Stochastic	RSI	B. Band	25 Days	50 Days	200 Days	
AALJJK	16,275	14,975	15,475	15,400	14,900	Oversold	Bullish	Neutral	Middle Bands	Under	Under	Under
ACESJK	795	775	765	795	780	Neutral	Bearish	Neutral	Middle Bands	Upper	Under	Under
ADHIJK	2,350	2,180	2,160	2,240	2,220	Neutral	Bullish	Neutral	Middle Bands	Upper	Upper	Under
ADROJK	1,755	1,700	1,665	1,725	1,700	Neutral	Bearish	Neutral	Middle Bands	Under	Under	Upper
AISAJK	2,000	2,040	1,945	2,070	1,995	Neutral	Bullish	Neutral	Upper Bands	Upper	Upper	Upper
AKRAJK	6,750	6,775	6,100	6,850	6,225	Neutral	Bullish	Neutral	Middle Bands	Upper	Upper	Upper
ANTMJK	810	765	780	810	790	Oversold	Bearish	Neutral	Lower Bands	Under	Under	Under
APLNJK	228	230	222	230	228	Neutral	Bullish	Neutral	Middle Bands	Upper	Upper	Under
ASIIJK	8,150	8,125	7,850	8,150	7,975	Neutral	Bullish	Neutral	Middle Bands	Upper	Upper	Upper
ASRIJK	398	378	382	388	382	Neutral	Bullish	Neutral	Middle Bands	Under	Upper	Under
BBCAJK	15,700	15,500	15,400	15,600	15,525	Neutral	Bullish	Neutral	Middle Bands	Upper	Upper	Upper
BBKPKJ	630	605	600	615	610	Oversold	Bullish	Neutral	Middle Bands	Under	Under	Under
BBNIJK	6,325	6,350	6,200	6,375	6,300	Overbought	Bullish	Overbought	Middle Bands	Upper	Upper	Upper
BBRIJK	12,125	11,950	11,650	12,000	11,850	Neutral	Bullish	Neutral	Middle Bands	Upper	Upper	Upper
BBTNJK	1,835	2,150	1,875	2,280	2,170	Neutral	Bearish	Neutral	Middle Bands	Upper	Upper	Upper
BDMNJK	5,100	5,025	4,410	5,100	5,000	Overbought	Bearish	Overbought	Middle Bands	Upper	Upper	Upper
BHITJK	146	129	130	134	130	Neutral	Bullish	Neutral	Middle Bands	Under	Under	Under
BIBRJK	2,390	2,300	2,210	2,390	2,310	Neutral	Bearish	Neutral	Middle Bands	Under	Under	Upper
BJTMJK	650	555	540	575	555	Neutral	Bullish	Neutral	Middle Bands	Under	Under	Upper
BKSLJK	95	96	94	104	98	Neutral	Bearish	Neutral	Middle Bands	Upper	Upper	Upper
BMRIJK	11,075	11,100	11,100	11,300	11,275	Neutral	Bearish	Neutral	Middle Bands	Under	Under	Upper
BMTRJJK	630	505	590	575	520	Oversold	Bearish	Overbought	Middle Bands	Under	Under	Under
BSDEJK	1,920	1,900	1,825	1,920	1,905	Overbought	Bearish	Neutral	Middle Bands	Upper	Upper	Under
BTPNJK	2,650	2,700	2,500	2,700	2,640	Neutral	Bullish	Neutral	Upper Bands	Upper	Upper	Upper
BWPTJK	386	366	344	386	368	Neutral	Bearish	Neutral	Middle Bands	Upper	Upper	Upper
CMNPJK	1,500	1,475	1,470	1,500	1,480	Oversold	Bullish	Neutral	Middle Bands	Under	Under	Under
CPINJK	3,550	3,270	3,100	3,470	3,190	Oversold	Bullish	Neutral	Middle Bands	Upper	Upper	Under
CSAPJK	515	500	492	500	500	Overbought	Bullish	Neutral	Middle Bands	Under	Under	Upper
CTRAJK	1,405	1,380	1,370	1,405	1,390	Oversold	Bullish	Neutral	Middle Bands	Upper	Upper	Under
CTRPJK	705	690	680	705	690	Neutral	Bearish	Neutral	Middle Bands	Upper	Under	Upper
CTRSJK	2,770	2,710	2,640	2,770	2,720	Neutral	Bullish	Neutral	Middle Bands	Upper	Under	Upper
DILDJK	510	468	468	482	474	Oversold	Bearish	Neutral	Middle Bands	Upper	Under	Under
EXCLJK	3,090	3,120	3,020	3,250	3,150	Neutral	Bullish	Neutral	Middle Bands	Upper	Upper	Upper
GGRMJK	62,850	65,000	60,050	65,050	60,525	Neutral	Bullish	Neutral	Upper Bands	Upper	Upper	Under
GIAAJK	390	338	332	360	342	Oversold	Bullish	Neutral	Middle Bands	Under	Under	Under
QJTLJK	1,170	1,240	1,005	1,250	1,045	Neutral	Bullish	Neutral	Upper Bands	Upper	Upper	Upper
HEXAJK	3,410	3,430	3,300	3,450	3,350	Overbought	Bullish	Neutral	Upper Bands	Upper	Upper	Upper
HRUMJK	2,220	2,160	1,920	2,220	2,090	Neutral	Bearish	Neutral	Upper Bands	Upper	Upper	Upper
ICBPJK	8,475	8,325	8,250	8,475	8,375	Oversold	Bullish	Neutral	Middle Bands	Under	Under	Under
IMASJK	1,350	1,300	1,255	1,340	1,270	Neutral	Bullish	Neutral	Middle Bands	Under	Under	Under
INCOJK	2,430	2,460	2,750	2,840	2,500	Oversold	Bearish	Neutral	Lower Bands	Under	Under	Under
INDFJK	8,025	8,100	7,950	8,200	8,125	Neutral	Bearish	Neutral	Middle Bands	Upper	Upper	Upper
INDYJK	770	725	715	770	735	Neutral	Bearish	Neutral	Middle Bands	Under	Under	Upper
INTAJK	336	332	324	336	332	Neutral	Bearish	Neutral	Middle Bands	Under	Under	Upper
INTPJK	15,725	15,650	15,350	15,750	15,700	Neutral	Bullish	Neutral	Middle Bands	Upper	Upper	Under
ITMGJK	15,750	17,225	14,950	17,300	15,500	Overbought	Bullish	Neutral	Upper Bands	Upper	Upper	Upper
JPFAJK	1,950	1,755	1,695	1,950	1,780	Neutral	Bearish	Neutral	Middle Bands	Under	Upper	Upper
JSMRJK	4,280	4,860	4,640	4,990	4,750	Neutral	Bullish	Neutral	Middle Bands	Upper	Upper	Upper
KUJAJK	296	298	294	300	298	Overbought	Bearish	Neutral	Middle Bands	Upper	Upper	Upper
KLBFJK	1,495	1,495	1,445	1,505	1,470	Neutral	Bullish	Neutral	Middle Bands	Upper	Under	Under
KRASJK	745	690	685	725	705	Oversold	Bullish	Neutral	Middle Bands	Under	Under	Under
LPCKJK	5,425	4,740	4,770	4,860	4,830	Neutral	Bearish	Overbought	Middle Bands	Under	Under	Under
LPKRJK	785	750	750	785	770	Neutral	Bearish	Neutral	Middle Bands	Upper	Upper	Under
LPPFJK	15,525	14,400	14,050	15,050	14,425	Neutral	Bullish	Neutral	Middle Bands	Under	Under	Under
LSIPJK	1,645	1,500	1,540	1,565	1,515	Oversold	Bearish	Neutral	Middle Bands	Under	Under	Under
MAINJK	1,365	1,235	1,210	1,295	1,250	Oversold	Bullish	Neutral	Middle Bands	Upper	Upper	Under
MAPIJK	5,975	5,525	5,300	5,800	5,600	Neutral	Bullish	Neutral	Middle Bands	Upper	Upper	Upper
MASAJK	248	220	212	248	214	Oversold	Bearish	Neutral	Middle Bands	Under	Under	Under
MNCNJK	1,710	1,590	1,495	1,595	1,570	Neutral	Bullish	Neutral	Middle Bands	Under	Under	Under
MPPAJK	1,480	1,210	1,240	1,275	1,235	Oversold	Bearish	Neutral	Middle Bands	Under	Under	Under
MTLAJK	274	310	300	312	302	Overbought	Bearish	Neutral	Middle Bands	Upper	Upper	Upper
MYORJK	1,895	1,910	1,800	1,920	1,890	Neutral	Bearish	Neutral	Middle Bands	Upper	Upper	Upper
PGASJK	2,900	2,860	2,680	2,890	2,720	Neutral	Bullish	Neutral	Middle Bands	Upper	Upper	Upper
FTBAJK	11,400	11,150	10,625	11,400	11,100	Neutral	Bearish	Neutral	Middle Bands	Under	Under	Upper
RALSJK	1,350	1,310	1,270	1,350	1,315	Neutral	Bullish	Neutral	Middle Bands	Under	Upper	Upper
ROTIJK	1,595	1,545	1,515	1,565	1,530	Neutral	Bullish	Neutral	Middle Bands	Under	Under	Upper
SCMAJK	2,960	3,150	2,780	3,180	2,950	Neutral	Bullish	Overbought	Upper Bands	Upper	Upper	Upper
SGROJK	2,050	2,040	2,000	2,050	2,040	Neutral	Bullish	Neutral	Middle Bands	Upper	Upper	Upper
SIMPJK	525	510	505	520	515	Neutral	Bearish	Neutral	Lower Bands	Under	Upper	Upper
SMCBJK	915	900	865	950	890	Neutral	Bullish	Neutral	Middle Bands	Under	Under	Under
SMGRJK	9,875	9,575	9,075	9,575	9,250	Neutral	Bullish	Neutral	Middle Bands	Upper	Upper	Upper
SMRAJK	1,440	1,395	1,360	1,440	1,400	Neutral	Bullish	Neutral	Middle Bands	Upper	Upper	Under
SRILJK	298	302	272	304	282	Neutral	Bullish	Neutral	Middle Bands	Upper	Upper	Upper
SSIAJK	580	560	545	580	565	Neutral	Bullish	Neutral	Middle Bands	Under	Upper	Under
SSMSJK	1,665	1,500	1,625	1,660	1,530	Oversold	Bearish	Neutral	Lower Bands	Under	Under	Under
TLKMJK	3,920	3,840	3,840	3,890	3,870	Neutral	Bearish	Neutral	Middle Bands	Under	Under	Under
TOTLJK	810	820	800	835	810	Neutral	Bullish	Neutral	Middle Bands	Upper	Upper	Upper
UNTRJK	24,700	25,500	23,750	25,525	24,550	Overbought	Bullish	Overbought	Upper Bands	Upper	Upper	Upper
UNVRJK	42,900	42,250	42,050	42,900	42,550	Neutral	Bearish	Neutral	Middle Bands	Upper	Under	Under

Source : Reliance Research

Legend :

- Movement: Bullish and Bearish (Indicator Stochastic)
- Momentum: Oversold, Overbought and Neutral (Indicator RSI)
- Resistance Fractal: Strong Resistance
- Support Fractal: Strong Support
- Green: Good Conditions
- Red: Poor Conditions

FR 56



R3	111.03
R2	108.90
R1	107.20
Last	106.23
S1	106.00
S2	104.64
S3	103.27

BUY

Comment:
 Bullish movement after broke the resistance level. Trying to reached the MA200 target level.

Stochastic golden-cross at oversold oscillator.

RSI consolidations momentum with limited upside potential.

Medium term bullish trend movement.

Upside target to 106.76 (MA200 resistance target level). Stop-loss level if broke the MA25 support level at 105.20.

Indonesian Technical Bond

Ticker	Resistance	Price	Support	Weekly	Weekly	Indicator			Moving Average			
	Fractal	2/24/2017	Fractal	High	Low	Stochastic	RSI	B. Band	25 Days	50 Days	200 Days	
FR34	120.37	120.13	120.06	120.30	120.12	Neutral	Bearish	Neutral	Upper Bands	Under	Under	Under
FR43	112.62	112.59	112.33	112.60	112.47	Neutral	Bearish	Neutral	Upper Bands	Upper	Upper	Under
FR47	115.82	115.55	115.11	115.73	115.53	Neutral	Bearish	Neutral	Upper Bands	Upper	Upper	Under
FR53	103.90	103.63	103.54	103.90	103.60	Oversold	Bullish	Neutral	Upper Bands	Under	Upper	Under
FR54	112.47	112.14	111.93	112.17	112.01	Neutral	Bullish	Neutral	Upper Bands	Upper	Upper	Under
FR56	105.71	106.23	105.23	106.23	105.56	Neutral	Bullish	Neutral	Upper Bands	Upper	Upper	Under
FR58	102.50	101.69	101.46	101.77	101.55	Neutral	Bullish	Neutral	Upper Bands	Upper	Upper	Under
FR59	96.50	96.49	96.01	96.50	96.20	Neutral	Bullish	Neutral	Middle Bands	Upper	Upper	Under
FR64	87.00	86.82	86.43	87.00	86.75	Oversold	Bullish	Neutral	Upper Bands	Upper	Upper	Under
FR66	98.71	98.61	98.49	98.70	98.63	Neutral	Bearish	Neutral	Upper Bands	Upper	Upper	Upper
FR68	102.72	102.59	102.46	102.72	102.57	Neutral	Bullish	Neutral	Upper Bands	Upper	Upper	Under
FR69	102.02	101.79	101.79	101.96	101.85	Neutral	Bearish	Neutral	Upper Bands	Under	Upper	Under
FR70	104.58	104.87	104.11	104.88	104.35	Neutral	Bullish	Neutral	Upper Bands	Upper	Upper	Under
FR71	107.94	107.92	107.52	107.94	107.66	Neutral	Bullish	Neutral	Upper Bands	Upper	Upper	Under
FR72	102.14	101.54	101.15	101.54	101.39	Neutral	Bullish	Neutral	Upper Bands	Under	Under	Under
FR73	107.08	106.53	106.19	106.53	106.28	Neutral	Bullish	Neutral	Upper Bands	Upper	Upper	Under
ORI13	98.21	98.44	98.07	98.44	98.15	Oversold	Bullish	Neutral	Middle Bands	Upper	Upper	Upper
ORI12	103.62	103.49	103.45	103.54	103.49	Neutral	Bullish	Neutral	Upper Bands	Under	Upper	Under
SR06	100.28	100.08	100.11	100.28	100.08	Neutral	Bearish	Oversold	Upper Bands	Under	Under	Under
SR08	102.77	102.51	102.61	102.67	102.42	Oversold	Bullish	Neutral	Upper Bands	Under	Upper	Under

Analyst: Lanjar Nafi, lanjar@reliance-securities.com

Source: Reliance Research

Legend :

- Movement: Bullish and Bearish (Indicator Stochastic)
- Momentum: Oversold, Overbought and Neutral (Indicator RSI)
- Resistance Fractal: Strong Resistance
- Support Fractal: Strong Support
- Green: Good Conditions
- Red: Poor Conditions

HEAD OFFICE

Reliance Building

Jl. Pluit Sakti Raya No. 27AB,
Pluit
Jakarta 14450
T. +62 21 661 7768
F. +62 21 661 9884

RESEARCH DIVISION

Robertus Yanuar Hardy

robertus@reliance-securities.com

Rio Adrianus

rio.adrianus@reliance-securities.com

Lanjar Nafi Taulat I

lanjar@reliance-securities.com

Aji Setiawan

aji@reliance-securities.com

Shanti Dwi Jayanti

santi@reliance-securities.com

Senior Analyst

Research Analyst

Technical Research Analyst

Associate Research Analyst

Associate Research Analyst

EQUITY DIVISION

Jakarta- Pluit

Jl. Pluit Sakti Raya No. 27AB,
Pluit
Jakarta 14450
T. +62 21 661 7768
F. +62 21 661 9884

Bandung

Jl.Cisangkuy No.58
Bandung 40115
T. +62 22 721 8200
F. +62 22 721 9255

Surabaya - Gubeng

Jl. Bangka No. 22
Surabaya 60281
T. +62 31 501 1128
F. +62 31 503 3196

Makassar

Jl. Boto Lempangan No. 34 J
Makassar- Sulawesi Selatan
T. +62 411 3632388
F. +62 411 3614634

Jakarta - Sudirman

Menara Batavia Ground Floor
Jl.KH.Mas Mansyur Kav 126
Jakarta 10220
T. +62 21 57905455
F. +62 21 57950728

Tasikmalaya

Ruko Tasik Indah Plaza No.21
Jl. KHZ Mustofa No. 345
Tasikmalaya 46121
T. +62 265 345000
F. +62 265 345003

Surabaya - Diponegoro

Jl. Diponegoro No.26D
Surabaya 60261
T. +62 31 567 0388
F. +62 31 561 0528

Medan

Jl. Teuku Amir Hamzah No.40-O
Medan 20117
T. +62 61 6638592
F. +62 61 6638023

Jakarta - Kebon Jeruk

Plaza Kebon Jeruk
Jl.Raya Perjuangan Blok A/2
Jakarta 11530
T. +62 21 532 4074
F. +62 21 536 2157

Malang

Jl. Guntur No. 19
Malang 65112
T. +62 341 347 611
F. +62 341 347 615

Bali - Denpasar

Dewata Square Blok A3
Jl. Letda Tantular Renon
Denpasar 802361
T. +62 361 225099
F. +62 361 245099

Tangerang

Jl. Pahlawan Seribu Ruko BSD
Sektor 7 Blok RK kav. 9
Tangerang 15310
T. +62 21 5387495
F. +62 21 5387494

Pekanbaru

Jl. Jendral Sudirman No.73
Pekanbaru-Riau
T. +62 761 848414
F. +62 761 849456

Pontianak

Jl. MT Haryono No. 6
Pontianak 78121
T. +62 561 575674
F. +62 561 575670

Jakarta - Centro

Ruko Centro Residence Kav. 4-5
Tower C Lt. 1 No. 26-29
Jl. Macan, Daan Mogot
Jakarta 14450
T. +62 21 56945227
F. +62 21 56945226

Solo

Jl. Slamet Riyadi 330^a
Solo 57145
T. +62 271 736599
F. +62 271 733478

Balikpapan

Ruko Bukit Damai Indah
Blok I, No. 3, Rt.34
Jl. MT. Haryono, Gunung
Bahagia, Balikpapan Selatan
76114
T. +62 542 746313
F. +62 542 746317

IDX CORNER & INVESTMENT GALLERY

President University

Resto Plaza 1F - Jababeka
Education Park
Jl. Ki Hajar Dewantara Raya
Cikarang - Bekasi 17550
T. +62 21 89106030

Universitas Siliwangi Tasikmalaya

Jl. Siliwangi No. 24
Tasikmalaya 46151
T. +62 265 323685
F. +62 265 323534

Politeknik Kediri

Jl. Mayor Bismo No. 27
Kediri 64121
T. +62 354 683128
F. +62 354 683128

Universitas Muhammadiyah Sidoarjo

Jl. Majapahit 666 B
Sidoarjo, Jawa Timur
T. +62 31 8945444
F. +62 31 8949333

Universitas Tanjungpura Pontianak

Jl. Jendral Ahmad Yani
Pontianak 78124
T. +62 561 743465
F. +62 561 766840

Universitas Pesantren Tinggi Darul Ulum

Kompleks Pp Darul Ulu,
Peterongan
Jombang, Jawa Timur 60281
T. +62 321 873655
F. +62 321 875771

STIE "AUB" Surakarta

Jl. Mr. Sartono 97, Cengklik
Nusukan, Surakarta 57135
T. +62 271 854803
F. +62 271 853084

Universitas Surabaya

Jl. Raya Kalirungkut
Surabaya 60293
T. +62 31 298 1203
F. +62 31 298 1204

Universitas Muhammadiyah Gresik

Jl. Sumatra 101 GKB
Gresik 61121
T. +62 31 395 1414
F. +62 31 395 2585

Universitas Negeri Malang

Jl. Surabaya No. 6
Malang 65145
T. +62 341 585914
F. +62 341 55288

Universitas Muhammadiyah Malang

Jl. Raya Tlogomas 246
Malang 65144
T. +62 341 464318-9
F. +62 341 460782

FSEI IAIN Antasari

Jl. Ahmad Yani Km. 4,5
Banjarmasin
T. + 62 511 3265783

STIE Malangkececwara

Jl. Terusan Candi Kalasan
Malang 65142
T. +62 341 491813
F. +62 341 495619

STIESIA Surabaya

Jl. Menur Pumpungan 30
Surabaya
T. +62 31 5947505
F. +62 31 5932218

Universitas 17 Agustus 1945 Banyuwangi

Jl. Adi Sucipto 26
Banyuwangi, Jawa Timur
T. +62 333 419613
F. +62 333 419163

STIE Tri Bhakti

Jl. Teuku Umar No. 24
Cut Meutia Setiakawan,
Bekasi
T. +62 21 82429400,
82429500
F. +62 271 726156

Universitas Islam Kalimantan

Jl. Adiyaksa No. 2, Kayu
Tangi, Banjarmasin
T. + 62 511 3303871
F. + 62 511 3303871

STIKOM Bali

Jalan Puputan No. 86, Renon,
Denpasar
T. +62361 244445
F. +62361 264773

Universitas Muhammadiyah Pontianak

Fakultas Ekonomi UM
Pontianak
Jl. Ahmad Yani, No. 111,
Pontianak 78124
T. +62561 743465
F. +62561 766840

Universitas Negeri Makassar

Fakultas Ekonomi Gedung BT
Lt.2
Jl. A.P. Pettarani, Kampus
UNM, Gunungsari Baru
Makassar 90222
T. +62 411 889464 / 881244
F. +62 411 887604

STIE AAS Surakarta

Jl. Slamet Riyadi No. 361,
Kartasura, Surakarta
T. +62 271 726156
F. +62 271 726156

UPN "Veteran" Yogyakarta

Jl. Babarsari 2, Tambak Bayan
Yogyakarta
T. +62 274 485268
F. +62 274 487147

Disclaimer:

Information, opinions and recommendations contained in this document are presented by PT Reliance Securities Tbk. from sources that are considered reliable and dependable. This document is not an offer, invitation or any kind of representations to decide to buy or sell stock. Investment decisions taken based on this document is not the responsibility of PT Reliance Securities Tbk. PT Reliance Securities Tbk. reserves the right to change the contents of this document at any time without prior notice.