

## IHSG



5386.69  
3.82  
0.07%

Vol (Mn): 3,058  
Val (Bn): 5,839

## LQ45



892.70  
-1.07  
-0.12%

Sector Indices	Last	Change	Change %
Agriculture	1837.47	(25.97)	(1.41)
Basic Industry	559.16	(3.90)	(0.70)
Consumer	2374.98	(13.08)	(0.55)
Finance	830.65	3.59	0.43
Infrastructure	1061.48	(4.17)	(0.39)
Manufacture	1401.06	(1.63)	(0.12)
Mining	1429.60	7.63	0.53
Misc Industry	1389.99	26.64	1.92
Property	517.05	4.22	0.82
Trade	865.63	(0.22)	(0.03)

Source: relitrade next G

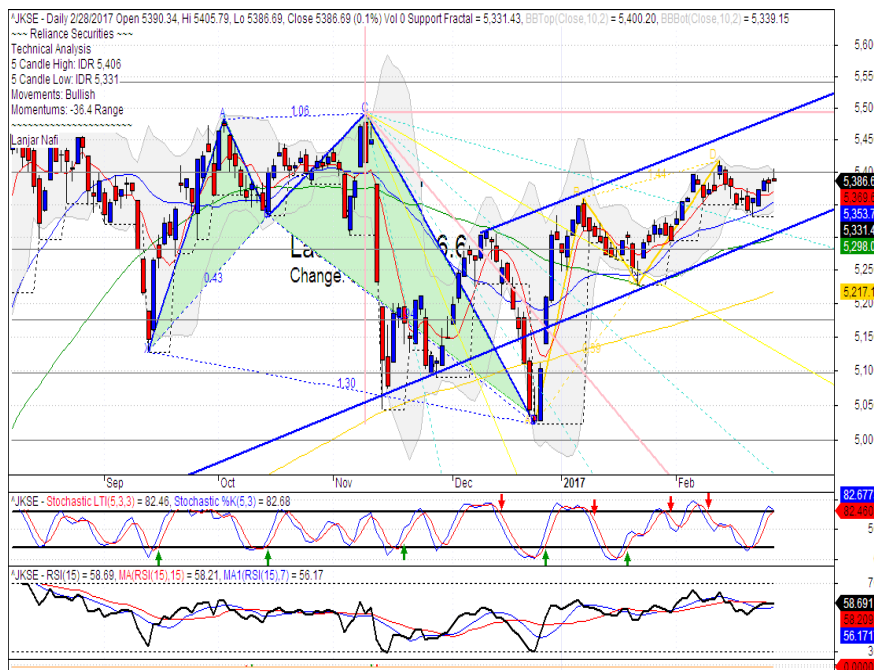
Most Active	Last	Change %	Freq
PPRO	328	21.5	15,283
PKPK	84	6.3	13,263
BMTR	540	4.9	12,031
KOBX	99	4.2	10,994
TRAM	141	11.9	9,147

Most Volume	Last	Change %	M share
MYRX	124	(1.6)	23,757
PPRO	328	21.5	5,773
ELTY	50	0.0	5,324
TRAM	141	11.9	3,927
MAMI	84	20.0	2,898

Most Value	Last	Change %	Rp Bil
ASII	8,200	2.2	777.71
BBCA	15,450	(0.4)	341.05
BBRI	11,950	0.6	324.13
MYRX	124	(1.6)	295.84
TLKM	3,850	(0.5)	254.91

Source: relitrade next G

## IHSG Technical Review



R3	5700
R2	5540
R1	5400
Last	5386.69
S1	5280
S2	5175
S3	5100

### Comment:

Consolidations after reached the resistance level.

Stochastic, Limited bullish movement at near overbought oscillator.

RSI consolidations at middle oscillator.

Long term bullish trend movement.

Upside target to 5400. Stop-loss level if broke the MA25 support level at 5310. Downside potential until 5285 (MA50 support level).

## WSKT



R3	2950
R2	2800
R1	2600
Last	2480
S1	2410
S2	2260
S3	2120
<b>SPECULATIVE BUY</b>	

### Comment:

Bullish separating line candlestick pattern. Whipsaw at bullish trend support level.

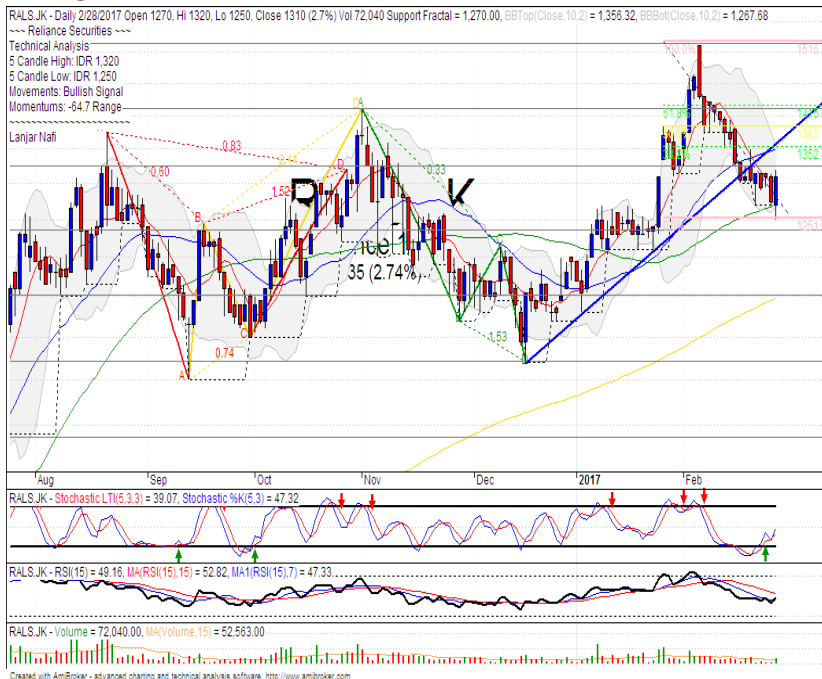
Stochastic, golden-cross at oversold oscillator. Broad upside target.

RSI Bullish reversal momentum at near oversold oscillator.

Medium term bullish trend movement.

Upside target to 2600. Stop-loss level if broke the fractal support level at 2420.

## RALS



R3	1515
R2	1415
R1	1325
Last	1310
S1	1235
S2	1150
S3	1070
<b>TRADING BUY</b>	

### Comment:

Rebounded at MA50 support level. Reversal signal. Huge trading volume.

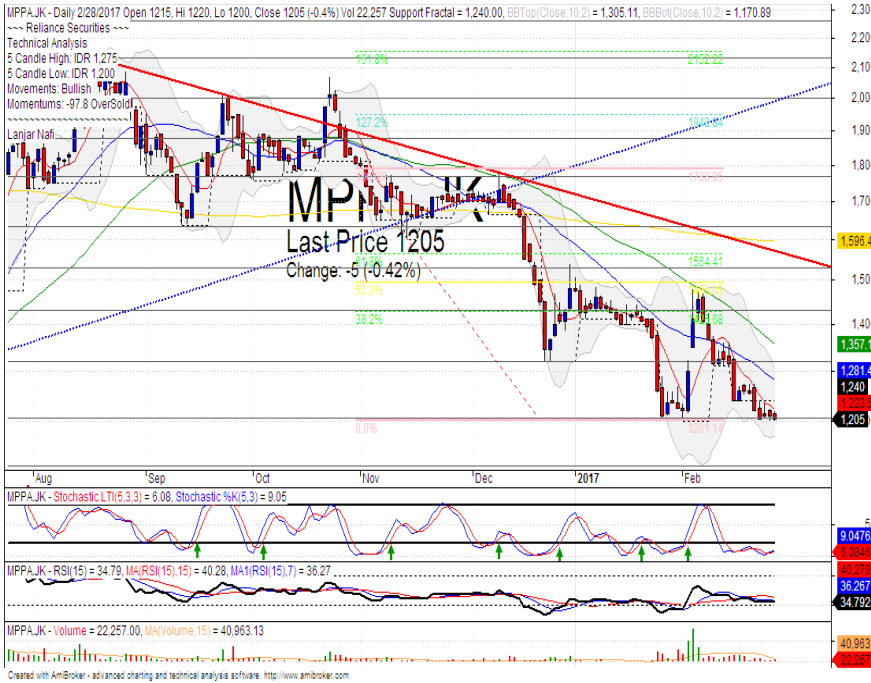
Stochastic bullish movement from oversold oscillator. Broad upside potential.

RSI bullish consolidations momentum at near oversold oscillator.

Short term bearish trend movement.

Upside target to 61.8% Fibonacci resistance level at 1415. Stop-loss level at 1260 (Broke the MA50 support level).

## MPPA



R3	1525
R2	1435
R1	1315
Last	1205
S1	1120
S2	1050
S3	990

**TRADING BUY**

**Comment:**  
Consolidations at support level. Rebound potential.

Stochastic golden-cross at oversold oscillator.

RSI bullish reversal momentum at oversold oscillator.

Long term bearish trend movement.

Upside target to 1355 (MA50 resistance level). Stop-loss level at 65000 (pulled back MA200 confirmations level).

## TINS



R3	1140
R2	1085
R1	1015
Last	990
S1	950
S2	860
S3	800

**BUY**

**Comment:**  
Bullish homing pigeon candlestick pattern confirmations with rebounded at support level. Reversal signal.

Stochastic golden-cross at oversold oscillator. Broad upside potential.

RSI reversal momentum at oversold oscillator.

Long term bullish trend movement.

Upside target to MA50 resistance target level at 1075. Stop-loss if broke the bullish trend support level at 905. Recommended buying price at 980.

Stocks	S2	S1	Closing Price	R1	R2	Technical Notes	Rec	Stop Loss	Rec Buy Prc	Target Price
<b>Plantation</b>										
AALI	14,000	14,900	14,950	15,850	16,700	Pulled back MA200	W	14,800		
LSIP	1,400	1,475	1,475	1,545	1,630	Consolidations	W	1,470		
<b>Mining</b>										
INCO	2,300	2,500	2,550	2,670	2,870	Consolidations	TB	2,450		2,670
<b>Consumer</b>										
UNVR	39,800	41,000	42,175	42,500	44,000	Consolidations	PS	42,400		
INDF	7,250	7,900	8,125	8,500	9,125	Sideways	W	7,850		
KLBF	1,420	1,485	1,530	1,540	1,600	Overbought	PS	1,480		
<b>Trading</b>										
ACES	710	755	770	810	870	Pulled back bearish trend	PS	750		
AKRA	6,100	6,100	6,350	6,600	6,925	Bearish momentum	S	6,200		
UNTR	22,500	24,000	24,650	25,325	26,700	Bearish momentum	S	24,200		
<b>Property &amp; Construction</b>										
LPCK	4,580	4,600	4,710	4,820	5,125	Consolidations	W	4,700		
WIKA	2,200	2,400	2,500	2,600	2,800	Sideways	PS	2,480		
BSDE	1,720	1,830	1,830	1,935	2,030	Bearish momentum	S	1,820		
WSKT	2,260	2,410	2,480	2,600	2,800	Stochastic golden-cross	W	2,400		
ADHI	1,850	1,950	2,130	2,200	2,300	Bearish momentum	S	2,100		
<b>Basic Industry &amp; Chemical</b>										
SMGR	8,725	9,350	9,625	9,900	10,500	Bullish consolidation	SB	9,100	9,200	9,800
CPIN	2,850	3,000	3,100	3,210	3,400	Bearish momentum	W	3,000		
MAIN	1,050	1,180	1,240	1,300	1,400	Oversold	PS	1,200		
INTP	14,600	14,600	15,150	15,500	16,350	Bearish momentum	W	15,500		
<b>Miscellaneous</b>										
SRIL	288	340	340	380	386	Pulled back resistance level	PS	310		
ASII	7,500	7,850	8,200	8,250	8,650	Rectangle	PS	7,800		
<b>Finance</b>										
BBTN	1,980	2,100	2,140	2,200	2,350	Consolidations	TB	2,050		
BMRI	10,750	11,000	11,300	11,450	11,800	Consolidations	W	11,000		
BTPN	2,550	2,770	2,830	3,000	3,240	Consolidations	PS	2,200		
BJBR	2,140	2,210	2,300	2,470	2,760	Sideways	TB	2,200		2,570
BBRI	11,100	11,725	11,950	12,300	13,000	Consolidations	W	11,700		
<b>Infrastructure</b>										
TLKM	3,510	3,710	3,850	3,950	4,200	Sideways	TB	3,700		3,950
PGAS	2,560	2,800	2,830	3,050	3,350	Bullish consolidaitons	TB	2,780		3,000

Source : Reliance Securities

### Analyst Conclusions:

The index rebounded at support level but having limited momentum.

Legend :

- B: BUY (allocate till 100% of the weighted capital to accumulate, higher than 50% upside probability)
- SB: SPECULATIVE BUY (allocate 25%-50% of the weighted capital to accumulate, 25%-50% upside probability)
- W: WAIT (wait for proper entry level, do the stop-loss if necessary)
- H: HOLD (hold the portfolio position, aim for the best price to distribute)
- PS: PARTIAL SELL (distribute 25%-50% part of the portfolio, 25%-50% downside probability)
- S: SELL (distribute till 100% of the portfolio, higher than 50% downside probability)
- TB: TRADING BUY (short term or intraday trading within a tight trading range. Highly speculative).

Ticker	Resistance Fractal	Price 2/28/2017	Support Fractal	Weekly High	Weekly Low	Indicator			Moving Average			
						Stochastic	RSI	B. Band	25 Days	50 Days	200 Days	
AALJJK	16,275	14,950	14,675	15,850	14,900	Neutral	Bullish	Neutral	Middle Bands	Under	Under	Under
ACESJK	795	770	765	795	770	Neutral	Bullish	Neutral	Middle Bands	Upper	Under	Under
ADHIJK	2,350	2,130	2,160	2,240	2,190	Neutral	Bearish	Neutral	Middle Bands	Upper	Upper	Under
ADROJK	1,755	1,695	1,665	1,725	1,700	Neutral	Bearish	Neutral	Middle Bands	Under	Under	Upper
AISAJK	2,070	2,000	1,945	2,070	1,995	Neutral	Bearish	Neutral	Middle Bands	Upper	Upper	Upper
AKRAJK	6,850	6,350	6,100	6,850	6,350	Neutral	Bearish	Neutral	Middle Bands	Under	Upper	Under
ANTMJK	810	745	780	800	770	Oversold	Bearish	Oversold	Lower Bands	Under	Under	Under
APLNJK	228	226	222	234	228	Neutral	Bullish	Neutral	Middle Bands	Upper	Upper	Under
ASIIJK	8,150	8,200	7,850	8,425	8,050	Neutral	Bearish	Neutral	Upper Bands	Upper	Upper	Upper
ASRIJK	398	372	372	384	378	Neutral	Bearish	Neutral	Lower Bands	Under	Under	Under
BBCAJK	15,600	15,450	15,400	15,600	15,525	Neutral	Bearish	Neutral	Middle Bands	Upper	Upper	Upper
BBKPJK	630	605	600	615	610	Neutral	Bullish	Neutral	Middle Bands	Under	Under	Under
BBNIJK	6,375	6,250	6,200	6,375	6,275	Neutral	Bearish	Neutral	Middle Bands	Upper	Upper	Upper
BBRIJK	12,125	11,950	11,850	12,025	12,000	Neutral	Bearish	Neutral	Middle Bands	Upper	Upper	Upper
BBTNJK	1,835	2,140	1,875	2,280	2,180	Neutral	Bearish	Neutral	Middle Bands	Upper	Upper	Upper
BDMNJK	5,100	4,950	4,750	5,050	4,990	Neutral	Bearish	Overbought	Middle Bands	Upper	Upper	Upper
BHITJK	146	132	126	133	130	Neutral	Bullish	Neutral	Middle Bands	Under	Under	Under
BIBRJK	2,390	2,300	2,210	2,350	2,300	Neutral	Bullish	Neutral	Lower Bands	Under	Under	Upper
BJTMJK	575	570	540	575	555	Neutral	Bullish	Neutral	Middle Bands	Under	Under	Upper
BKSLJK	95	97	95	99	97	Oversold	Bullish	Neutral	Middle Bands	Upper	Upper	Upper
BMRIJK	11,075	11,300	11,100	11,400	11,225	Neutral	Bearish	Neutral	Middle Bands	Upper	Upper	Upper
BMTBJK	630	540	505	550	520	Oversold	Bullish	Neutral	Middle Bands	Upper	Under	Under
BSDEJK	1,920	1,830	1,825	1,920	1,855	Neutral	Bearish	Neutral	Lower Bands	Under	Upper	Under
BTPNJK	2,650	2,830	2,610	2,830	2,650	Overbought	Bullish	Upper	Upper Bands	Upper	Upper	Upper
BWPTJK	386	370	362	380	370	Neutral	Bearish	Neutral	Middle Bands	Upper	Upper	Upper
CMNPJK	1,500	1,470	1,465	1,500	1,475	Oversold	Bullish	Neutral	Middle Bands	Under	Under	Under
CPINJK	3,550	3,100	3,050	3,300	3,190	Neutral	Bullish	Neutral	Middle Bands	Under	Under	Under
CSAPJK	515	498	498	500	500	Overbought	Bearish	Neutral	Middle Bands	Under	Under	Upper
CTRAJK	1,405	1,370	1,370	1,405	1,370	Neutral	Bullish	Neutral	Middle Bands	Upper	Upper	Under
CTRPJK	705	690	680	705	690	Neutral	Bearish	Neutral	Middle Bands	Upper	Under	Upper
CTRSJK	2,770	2,710	2,640	2,770	2,720	Neutral	Bullish	Neutral	Middle Bands	Upper	Under	Upper
DILDJK	510	460	468	478	466	Oversold	Bearish	Neutral	Middle Bands	Under	Under	Under
EXCLJK	3,090	2,990	3,020	3,250	3,070	Neutral	Bearish	Neutral	Middle Bands	Under	Upper	Upper
GGRMJK	62,850	65,850	60,050	66,000	62,375	Overbought	Bullish	Neutral	Upper Bands	Upper	Upper	Under
GIAAJK	390	342	332	356	342	Neutral	Bullish	Neutral	Middle Bands	Under	Under	Under
QJTLJK	1,170	1,265	1,005	1,295	1,055	Overbought	Bearish	Neutral	Upper Bands	Upper	Upper	Upper
HEXAJK	3,410	3,680	3,300	3,700	3,390	Overbought	Bearish	Overbought	Upper Bands	Upper	Upper	Upper
HRUMJK	2,220	2,180	1,920	2,280	2,140	Neutral	Bullish	Neutral	Middle Bands	Upper	Upper	Upper
ICBPJK	8,475	8,325	8,250	8,425	8,350	Neutral	Bullish	Neutral	Middle Bands	Under	Under	Under
IMASJK	1,340	1,290	1,255	1,340	1,295	Neutral	Bearish	Neutral	Middle Bands	Under	Under	Under
INCOJK	2,430	2,550	2,420	2,720	2,500	Oversold	Bullish	Neutral	Middle Bands	Under	Under	Under
INDFJK	8,025	8,125	7,950	8,200	8,100	Neutral	Bearish	Neutral	Middle Bands	Upper	Upper	Upper
INDYJK	770	740	720	770	735	Neutral	Bullish	Neutral	Middle Bands	Upper	Upper	Upper
INTAJK	336	338	326	340	332	Neutral	Bullish	Neutral	Upper Bands	Upper	Upper	Upper
INTPJK	15,750	15,150	15,350	15,800	15,700	Neutral	Bearish	Neutral	Lower Bands	Under	Under	Under
ITMGJK	15,750	17,600	14,950	17,675	16,825	Overbought	Bullish	Neutral	Upper Bands	Upper	Upper	Upper
JPFAJK	1,950	1,725	1,675	1,905	1,780	Neutral	Bullish	Neutral	Middle Bands	Under	Upper	Upper
JSMRJK	4,280	4,780	4,640	4,990	4,750	Neutral	Bearish	Neutral	Middle Bands	Upper	Upper	Under
KIAJJK	296	308	294	312	298	Neutral	Bullish	Overbought	Upper Bands	Upper	Upper	Upper
KLBFJK	1,495	1,530	1,445	1,550	1,495	Overbought	Bearish	Neutral	Upper Bands	Upper	Upper	Under
KRASJK	745	685	685	740	705	Neutral	Bullish	Neutral	Middle Bands	Under	Under	Under
LPCKJK	5,425	4,710	4,770	4,830	4,710	Oversold	Bearish	Oversold	Middle Bands	Under	Under	Under
LPKRJK	785	735	750	775	745	Neutral	Bearish	Neutral	Lower Bands	Under	Under	Under
LPPFJK	15,050	13,650	14,050	15,050	13,950	Neutral	Bearish	Neutral	Lower Bands	Under	Under	Under
LSIPJK	1,645	1,475	1,490	1,560	1,515	Neutral	Bullish	Neutral	Lower Bands	Under	Under	Under
MAINJK	1,275	1,240	1,210	1,275	1,250	Neutral	Bullish	Neutral	Middle Bands	Upper	Upper	Under
MAPIJK	5,975	5,375	5,300	5,800	5,425	Neutral	Bearish	Neutral	Middle Bands	Under	Upper	Upper
MASAJK	248	202	212	220	210	Oversold	Bullish	Neutral	Lower Bands	Under	Under	Under
MNCNJK	1,710	1,660	1,495	1,685	1,570	Overbought	Bullish	Neutral	Middle Bands	Upper	Under	Under
MPPAJK	1,480	1,205	1,240	1,275	1,220	Oversold	Bullish	Neutral	Middle Bands	Under	Under	Under
MTLAJK	274	314	300	314	308	Overbought	Bullish	Overbought	Middle Bands	Upper	Upper	Upper
MYORJK	1,895	2,060	1,800	2,070	1,890	Overbought	Bullish	Overbought	Upper Bands	Upper	Upper	Upper
PGASJK	2,890	2,830	2,680	2,890	2,720	Neutral	Bullish	Neutral	Middle Bands	Upper	Upper	Upper
FTBAJK	11,375	11,175	11,025	11,375	11,200	Neutral	Bearish	Neutral	Middle Bands	Upper	Under	Upper
RALSJK	1,350	1,310	1,270	1,320	1,315	Neutral	Bullish	Neutral	Middle Bands	Under	Upper	Upper
ROTIJK	1,595	1,565	1,515	1,575	1,545	Neutral	Bullish	Neutral	Middle Bands	Upper	Under	Upper
SCMAJK	3,180	2,950	2,780	3,180	2,950	Neutral	Bearish	Neutral	Middle Bands	Upper	Upper	Upper
SGROJK	2,050	2,050	2,000	2,080	2,040	Neutral	Bullish	Neutral	Middle Bands	Upper	Upper	Upper
SIMPJK	525	505	505	525	515	Neutral	Bearish	Neutral	Lower Bands	Under	Under	Upper
SMCBJK	950	910	865	950	900	Neutral	Bullish	Neutral	Middle Bands	Upper	Upper	Under
SMGRJK	9,875	9,625	9,075	9,675	9,250	Neutral	Bullish	Neutral	Middle Bands	Upper	Upper	Upper
SMRAJK	1,440	1,370	1,360	1,440	1,380	Neutral	Bearish	Neutral	Middle Bands	Upper	Upper	Under
SRILJK	298	340	272	360	282	Neutral	Bullish	Overbought	Middle Bands	Upper	Upper	Upper
SSIAJK	580	550	545	570	565	Neutral	Bearish	Neutral	Middle Bands	Under	Upper	Under
SSMSJK	1,665	1,525	1,455	1,630	1,520	Neutral	Bullish	Neutral	Middle Bands	Under	Upper	Under
TLKMJK	3,920	3,850	3,830	3,900	3,870	Neutral	Bullish	Neutral	Middle Bands	Under	Under	Under
TOTLJK	810	825	800	830	810	Neutral	Bullish	Neutral	Middle Bands	Upper	Upper	Upper
UNTRJK	25,525	24,650	23,750	25,525	24,550	Overbought	Bearish	Neutral	Middle Bands	Upper	Upper	Upper
UNVRJK	42,900	42,175	42,075	42,900	42,550	Neutral	Bearish	Neutral	Middle Bands	Upper	Under	Under

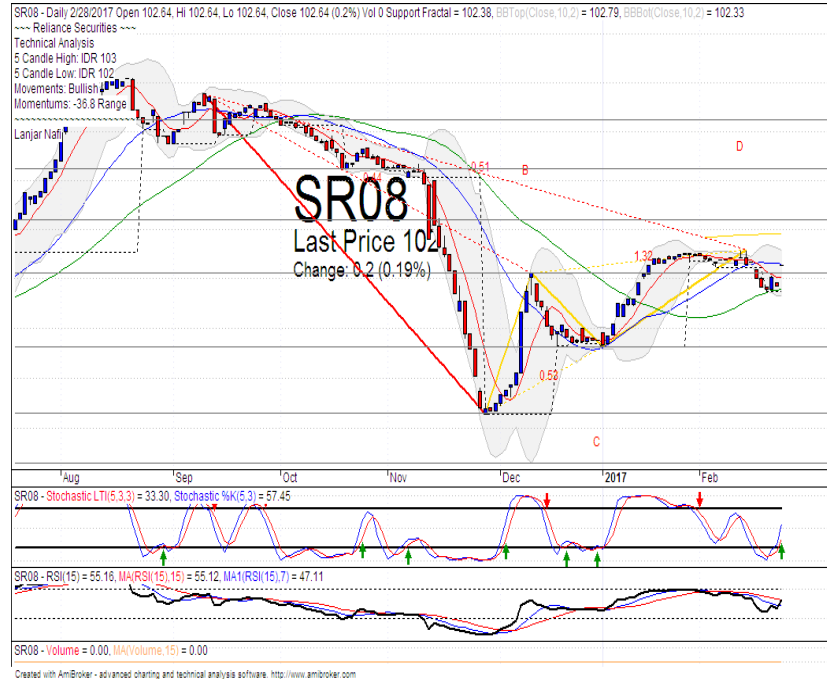
Source : Reliance Research

### Legend :

- Movement: Bullish and Bearish (Indicator Stochastic)
- Momentum: Oversold, Overbought and Neutral (Indicator RSI)
- Resistance Fractal: Strong Resistance
- Support Fractal: Strong Support
- Green: Good Conditions
- Red: Poor Conditions



## SR 08



R3	104.10
R2	103.62
R1	103.08
Last	102.65
S1	102.56
S2	101.82
S3	101.14

**BUY**

**Comment:**  
 Rebounded at MA50 support level. Bullish momentum after broke the resistance level.

Stochastic golden-cross at oversold oscillator.

RSI consolidations momentum with broad upside potential.

Medium term bullish trend movement.

Upside target to 102.97 (MA200 resistance target level). Stop-loss level if broke the MA50 support level at 102.30.

## Indonesian Technical Bond

Ticker	Resistance	Price	Support	Weekly	Weekly	Indicator			Moving Average			
	Fractal	2/28/2017	Fractal	High	Low	Stochastic	RSI	B. Band	25 Days	50 Days	200 Days	
FR34	120.37	120.31	120.06	120.31	120.12	Neutral	Bullish	Neutral	Upper Bands	Upper	Under	Under
FR43	112.57	112.51	112.33	112.57	112.47	Neutral	Bearish	Neutral	Upper Bands	Upper	Upper	Under
FR47	115.82	115.53	115.11	115.82	115.53	Neutral	Bearish	Neutral	Upper Bands	Upper	Upper	Under
FR53	103.90	103.91	103.54	103.91	103.60	Neutral	Bullish	Neutral	Upper Bands	Upper	Upper	Under
FR54	112.47	112.34	111.93	112.47	112.01	Neutral	Bullish	Neutral	Upper Bands	Upper	Upper	Under
FR56	105.71	105.81	105.23	106.37	105.67	Overbought	Bearish	Neutral	Upper Bands	Upper	Upper	Under
FR58	102.50	101.62	101.46	101.83	101.55	Neutral	Bullish	Neutral	Upper Bands	Upper	Upper	Under
FR59	96.50	96.63	96.01	96.63	96.20	Neutral	Bullish	Neutral	Upper Bands	Upper	Upper	Under
FR64	87.00	86.92	86.69	87.13	86.75	Neutral	Bullish	Neutral	Upper Bands	Upper	Upper	Under
FR66	98.71	98.61	98.56	98.64	98.63	Neutral	Bullish	Neutral	Upper Bands	Under	Upper	Upper
FR68	102.72	103.05	102.46	103.05	102.57	Neutral	Bullish	Neutral	Upper Bands	Upper	Upper	Under
FR69	102.02	101.99	101.79	102.02	101.85	Neutral	Bullish	Neutral	Upper Bands	Upper	Upper	Under
FR70	104.88	104.64	104.11	104.88	104.35	Overbought	Bullish	Neutral	Upper Bands	Upper	Upper	Under
FR71	107.94	107.93	107.52	107.93	107.66	Neutral	Bullish	Neutral	Upper Bands	Upper	Upper	Under
FR72	102.14	102.09	101.15	102.09	101.39	Overbought	Bullish	Neutral	Upper Bands	Upper	Under	Under
FR73	107.08	106.75	106.19	106.75	106.28	Neutral	Bullish	Neutral	Upper Bands	Upper	Upper	Under
ORI13	98.21	98.44	98.07	98.44	98.15	Overbought	Bullish	Neutral	Middle Bands	Upper	Upper	Upper
ORI12	103.62	103.62	103.42	103.62	103.49	Neutral	Bullish	Neutral	Upper Bands	Upper	Upper	Under
SR06	100.28	100.32	100.11	100.32	100.08	Overbought	Bullish	Neutral	Upper Bands	Upper	Under	Under
SR08	102.77	102.64	102.38	102.64	102.42	Neutral	Bullish	Neutral	Upper Bands	Under	Under	Under

Analyst: Lanjar Nafi, lanjar@reliance-securities.com

Source: Reliance Research

### Legend :

- Movement: Bullish and Bearish (Indicator Stochastic)
- Momentum: Oversold, Overbought and Neutral (Indicator RSI)
- Resistance Fractal: Strong Resistance
- Support Fractal: Strong Support
- Green: Good Conditions
- Red: Poor Conditions

## HEAD OFFICE

### Reliance Building

Jl. Pluit Sakti Raya No. 27AB,  
Pluit  
Jakarta 14450  
T. +62 21 661 7768  
F. +62 21 661 9884

## RESEARCH DIVISION

### Robertus Yanuar Hardy

*robertus@reliance-securities.com*

### Rio Adrianus

*rio.adrianus@reliance-securities.com*

### Lanjar Nafi Taulat I

*lanjar@reliance-securities.com*

### Aji Setiawan

*aji@reliance-securities.com*

### Shanti Dwi Jayanti

*santi@reliance-securities.com*

Senior Analyst

Research Analyst

Technical Research Analyst

Associate Research Analyst

Associate Research Analyst

## EQUITY DIVISION

### Jakarta- Pluit

Jl. Pluit Sakti Raya No. 27AB,  
Pluit  
Jakarta 14450  
T. +62 21 661 7768  
F. +62 21 661 9884

### Bandung

Jl.Cisangkuy No.58  
Bandung 40115  
T. +62 22 721 8200  
F. +62 22 721 9255

### Surabaya - Gubeng

Jl. Bangka No. 22  
Surabaya 60281  
T. +62 31 501 1128  
F. +62 31 503 3196

### Makassar

Jl. Boto Lempangan No. 34 J  
Makassar- Sulawesi Selatan  
T. +62 411 3632388  
F. +62 411 3614634

### Jakarta - Sudirman

Menara Batavia Ground Floor  
Jl.KH.Mas Mansyur Kav 126  
Jakarta 10220  
T. +62 21 57905455  
F. +62 21 57950728

### Tasikmalaya

Ruko Tasik Indah Plaza No.21  
Jl. KHZ Mustofa No. 345  
Tasikmalaya 46121  
T. +62 265 345000  
F. +62 265 345003

### Surabaya - Diponegoro

Jl. Diponegoro No.26D  
Surabaya 60261  
T. +62 31 567 0388  
F. +62 31 561 0528

### Medan

Jl. Teuku Amir Hamzah No.40-O  
Medan 20117  
T. +62 61 6638592  
F. +62 61 6638023

### Jakarta - Kebon Jeruk

Plaza Kebon Jeruk  
Jl.Raya Perjuangan Blok A/2  
Jakarta 11530  
T. +62 21 532 4074  
F. +62 21 536 2157

### Malang

Jl. Guntur No. 19  
Malang 65112  
T. +62 341 347 611  
F. +62 341 347 615

### Bali - Denpasar

Dewata Square Blok A3  
Jl. Letda Tantular Renon  
Denpasar 802361  
T. +62 361 225099  
F. +62 361 245099

### Tangerang

Jl. Pahlawan Seribu Ruko BSD  
Sektor 7 Blok RK kav. 9  
Tangerang 15310  
T. +62 21 5387495  
F. +62 21 5387494

### Pekanbaru

Jl. Jendral Sudirman No.73  
Pekanbaru-Riau  
T. +62 761 848414  
F. +62 761 849456

### Pontianak

Jl. MT Haryono No. 6  
Pontianak 78121  
T. +62 561 575674  
F. +62 561 575670

### Jakarta - Centro

Ruko Centro Residence Kav. 4-5  
Tower C Lt. 1 No. 26-29  
Jl. Macan, Daan Mogot  
Jakarta 14450  
T. +62 21 56945227  
F. +62 21 56945226

### Solo

Jl. Slamet Riyadi 330<sup>a</sup>  
Solo 57145  
T. +62 271 736599  
F. +62 271 733478

### Balikpapan

Ruko Bukit Damai Indah  
Blok I, No. 3, Rt.34  
Jl. MT. Haryono, Gunung  
Bahagia, Balikpapan Selatan  
76114  
T. +62 542 746313  
F. +62 542 746317

## IDX CORNER & INVESTMENT GALLERY

### President University

Resto Plaza 1F - Jababeka  
Education Park  
Jl. Ki Hajar Dewantara Raya  
Cikarang - Bekasi 17550  
T. +62 21 89106030

### Universitas Siliwangi Tasikmalaya

Jl. Siliwangi No. 24  
Tasikmalaya 46151  
T. +62 265 323685  
F. +62 265 323534

### Politeknik Kediri

Jl. Mayor Bismo No. 27  
Kediri 64121  
T. +62 354 683128  
F. +62 354 683128

### Universitas Muhammadiyah Sidoarjo

Jl. Majapahit 666 B  
Sidoarjo, Jawa Timur  
T. +62 31 8945444  
F. +62 31 8949333

### Universitas Tanjungpura Pontianak

Jl. Jendral Ahmad Yani  
Pontianak 78124  
T. +62 561 743465  
F. +62 561 766840

### Universitas Pesantren Tinggi Darul Ulum

Kompleks Pp Darul Ulu,  
Peterongan  
Jombang, Jawa Timur 60281  
T. +62 321 873655  
F. +62 321 875771

### STIE "AUB" Surakarta

Jl. Mr. Sartono 97, Cengklik  
Nusukan, Surakarta 57135  
T. +62 271 854803  
F. +62 271 853084

### Universitas Surabaya

Jl. Raya Kalirungkut  
Surabaya 60293  
T. +62 31 298 1203  
F. +62 31 298 1204

### Universitas Muhammadiyah Gresik

Jl. Sumatra 101 GKB  
Gresik 61121  
T. +62 31 395 1414  
F. +62 31 395 2585

### Universitas Negeri Malang

Jl. Surabaya No. 6  
Malang 65145  
T. +62 341 585914  
F. +62 341 55288

### Universitas Muhammadiyah Malang

Jl. Raya Tlogomas 246  
Malang 65144  
T. +62 341 464318-9  
F. +62 341 460782

### FSEI IAIN Antasari

Jl. Ahmad Yani Km. 4,5  
Banjarmasin  
T. + 62 511 3265783

### STIE Malangkececwara

Jl. Terusan Candi Kalasan  
Malang 65142  
T. +62 341 491813  
F. +62 341 495619

### STIESIA Surabaya

Jl. Menur Pumpungan 30  
Surabaya  
T. +62 31 5947505  
F. +62 31 5932218

### Universitas 17 Agustus 1945 Banyuwangi

Jl. Adi Sucipto 26  
Banyuwangi, Jawa Timur  
T. +62 333 419613  
F. +62 333 419163

### STIE Tri Bhakti

Jl. Teuku Umar No. 24  
Cut Meutia Setiakawan,  
Bekasi  
T. +62 21 82429400,  
82429500  
F. +62 271 726156

### Universitas Islam Kalimantan

Jl. Adiyaksa No. 2, Kayu  
Tangi, Banjarmasin  
T. + 62 511 3303871  
F. + 62 511 3303871

### STIKOM Bali

Jalan Puputan No. 86, Renon,  
Denpasar  
T. +62361 244445  
F. +62361 264773

### Universitas Muhammadiyah Pontianak

Fakultas Ekonomi UM  
Pontianak  
Jl. Ahmad Yani, No. 111,  
Pontianak 78124  
T. +62561 743465  
F. +62561 766840

### Universitas Negeri Makassar

Fakultas Ekonomi Gedung BT  
Lt.2  
Jl. A.P. Pettarani, Kampus  
UNM, Gunungsari Baru  
Makassar 90222  
T. +62 411 889464 / 881244  
F. +62 411 887604

### STIE AAS Surakarta

Jl. Slamet Riyadi No. 361,  
Kartasura, Surakarta  
T. +62 271 726156  
F. +62 271 726156

### UPN "Veteran" Yogyakarta

Jl. Babarsari 2, Tambak Bayan  
Yogyakarta  
T. +62 274 485268  
F. +62 274 487147

### Disclaimer:

Information, opinions and recommendations contained in this document are presented by PT Reliance Securities Tbk. from sources that are considered reliable and dependable. This document is not an offer, invitation or any kind of representations to decide to buy or sell stock. Investment decisions taken based on this document is not the responsibility of PT Reliance Securities Tbk. PT Reliance Securities Tbk. reserves the right to change the contents of this document at any time without prior notice.