



Weekly IHSG



	5385.91
	34.98
	0.65%
Vol (Mn):	81.65
Val (Bn):	31.34
F Net B (Bn):	(793)

Weekly LQ-45



	895.86
	8.46
	0.95%

International	Last	WoW Chg	(%)
DJIA	20,821.76	201.76	0.98%
Nasdaq	5,845.31	30.31	0.52%
S&P 500	2,367.34	20.34	0.87%
FTSE 100	7,243.70	-34.30	-0.47%
Nikkei 225	19,283.54	-64.46	-0.33%
Hang Seng	23,965.70	-142.30	-0.59%
Sanghai Comp	3,253.4	23.43	0.73%

Source: Bloomberg

Sector	Last	WoW Chg	(%)
Agriculture	1841.22	-24.05	-1.29%
Basic Industry	565.55	-10.24	-1.78%
Composite	5385.91	34.98	0.65%
Consumer	2374.99	25.61	1.09%
Finance	829.58	6.39	0.78%
Infrastructure	1062.68	1.61	0.15%
Manufacture	1399.59	11.86	0.85%
Mining	1419.62	8.03	0.57%
Misc Industry	1365.94	40.16	3.03%
Property	517.05	-6.92	-1.32%
Trade	871.41	17.59	2.06%

Source: Bloomberg

Exchange Rates	Last	WoW Chg	(%)
USD / IDR	13347	25.00	0.19%
US \$ Index	101.13	-0.38	-0.37%
EUR / USD	1.06	0.01	0.51%
USD / JPY	112.17	-1.21	-1.07%
GBP / USD	1.24	-0.01	-0.49%
USD / CNY	6.87	0.00	-0.07%
AUD / USD	0.77	0.00	-0.03%

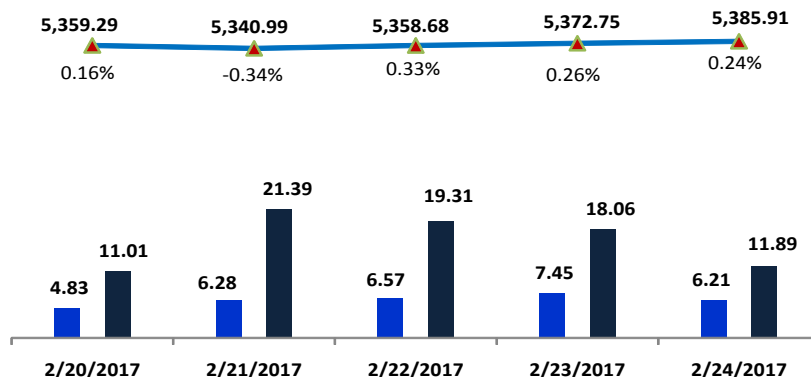
Others	Last	WoW Chg	(%)
S&P 500 Vlty (VIX)	11.47	-0.10	-0.86%
Baltic Dry	875.00	97.00	12.47%

Source: Bloomberg

Monday Recommendation Flashback

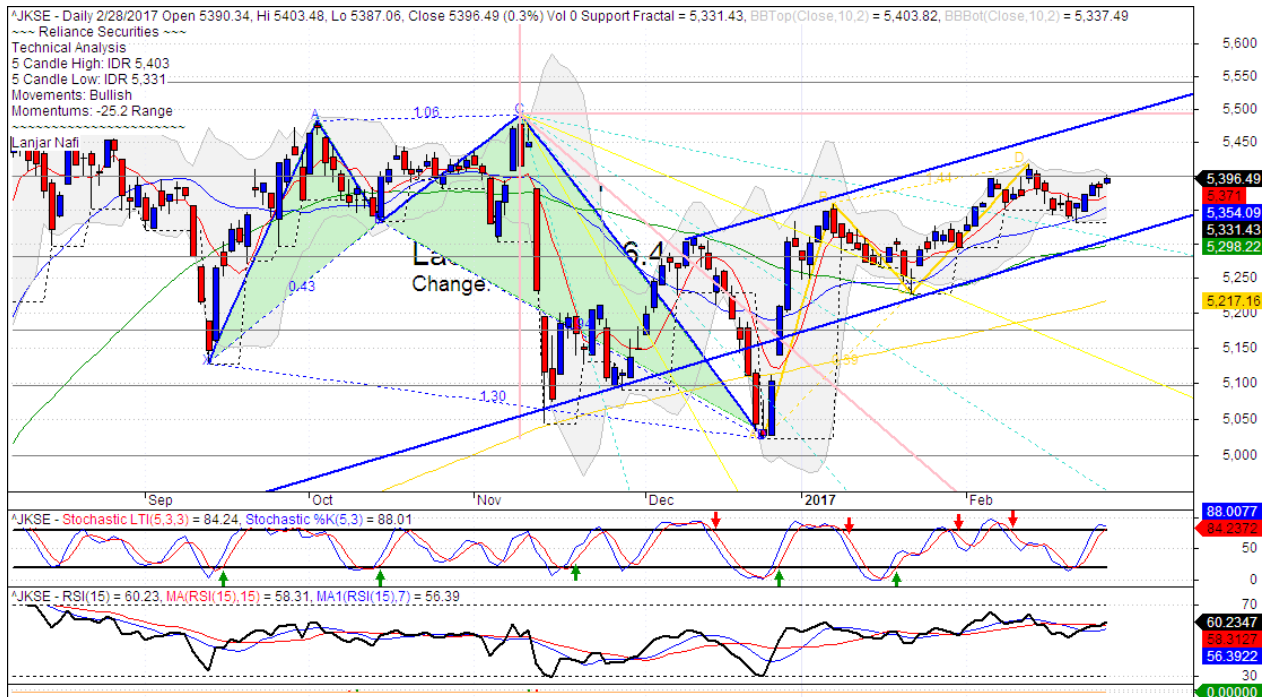
Stock	Rec.	02/17/2016 (close)	Stop Loss	Loss	Week's Highest	Date	Potential Gain	Week's Lowest	Date	Potential Gain
EXCL	S	3,130	3,050	-2.56%	3,250	2/21/2017	3.83%	3,020	2/22/2017	-3.51%
BBTN	H	2,170	2,120	-2.30%	2,280	2/22/2017	5.07%	2,110	2/24/2017	-2.76%
INAF	TB	2,420	2,180	-9.92%	2,500	2/20/2017	3.31%	2,330	2/24/2017	-3.72%
MYRX	TB	130	126	-3.08%	132	2/24/2017	1.54%	112	2/21/2017	-13.85%

IHSG on the Week (02/20/2017 - 02/24/2016)



LS-27 Close	888.20	886.34	891.78	893.11	895.86
LS-27 % Chg	0.00	0.00	0.01	0.00	0.00
Frng Net Buy (Bn)	-160.96	-145.98	95.00	-246.65	-334.10
	727.24	740.36	986.79	646.46	561.76

IHSG



Created with AmiBroker - advanced charting and technical analysis software. <http://www.amibroker.com>

S1	5280	R1	5400
S2	5175	R2	5545
S3	5100	R3	5700

Comment:

IHSG consolidations movement and rebounded at MA25 support level last week. Trading range 5331-5403.

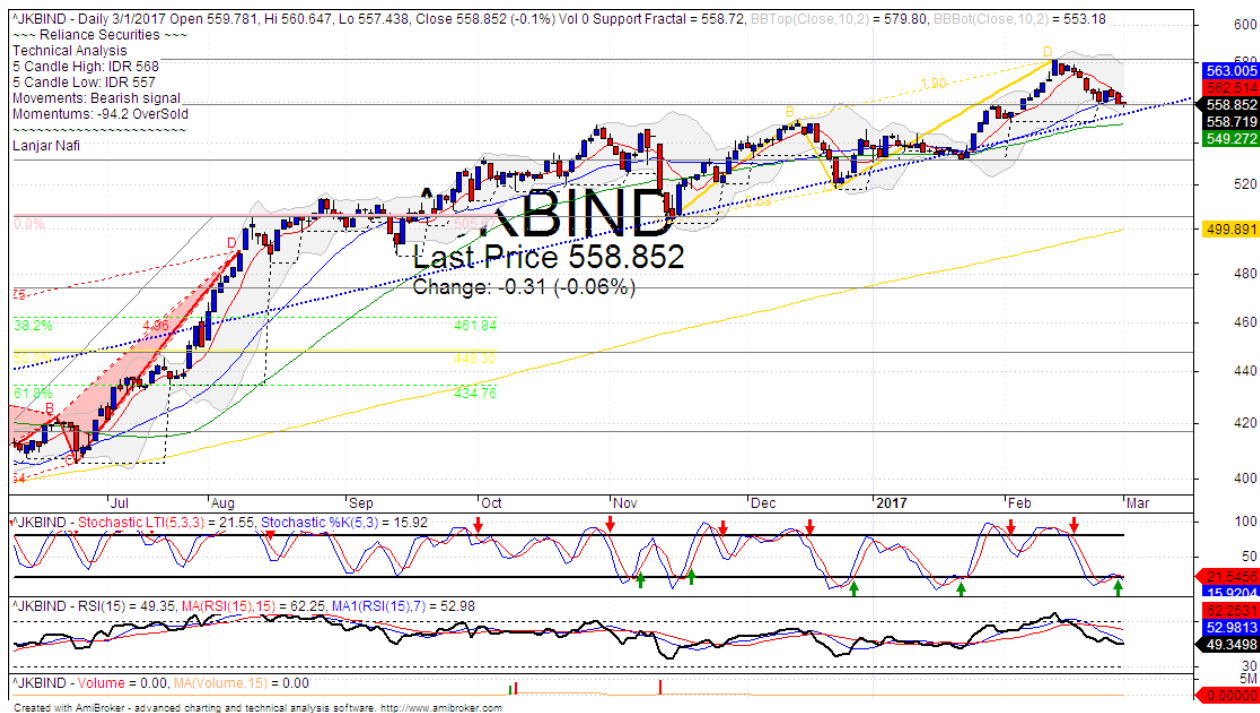
In the first session of the week. The index has reached the resistance at overbought momentum and limited bullish momentum.

Stochastic, dead-cross indications at overbought oscillator. Broad downside potential. RSI indicator still consolidations momentum at middle state.

Long term bullish trend movement.

Stop-loss level if broke the MA7 support level at 5350. Downside potential until 5300 (MA25 support level).

Basic Industry Index



S1	560	R1	580
S2	530	R2	610
S3	505	R3	630

Comment:

Basic Industry index declined significant after pulled back upper Bollinger bands resistance level. Trading range at 558–557.

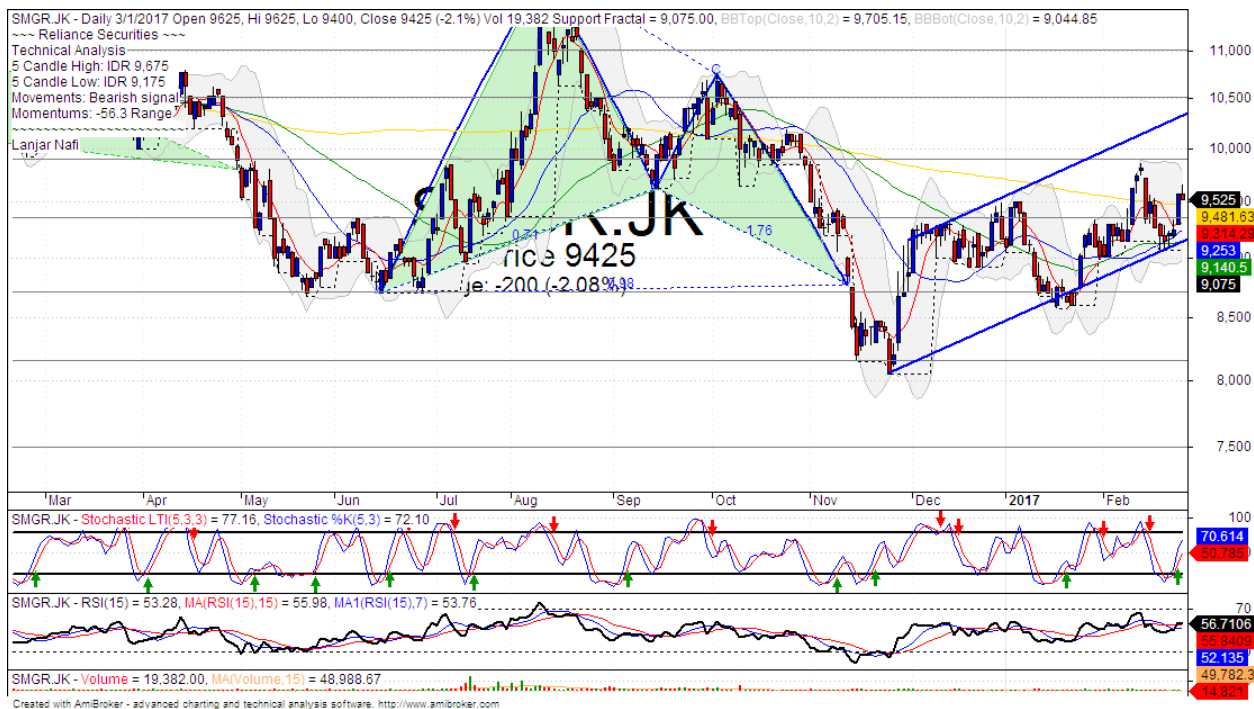
By the first session today, the index arrived at support level and rebound indications.

Stochastic has dead-cross at oversold oscillator and broad upside potential. RSI momentum still consolidations at middle oscillator.

Short term bearish trend movement.

This week resistance at 580 (Upper Bollinger bands resistance level). Stop-loss position if broke the support level at 545.

SMGR



S1	9350	R1	9900
S2	8700	R2	10500
S3	8150	R3	11000

Comment:

SMGR has declined after reached the resistance level last week. Trading range 9175–9675.

By the first session this week, the price has rebounded at bullish trend support level. It's a positive signal.

Stochastic bullish movement at middle oscillator. Broad upside potential. RSI indicator moved at middle oscillator.

Medium term bullish trend movement.

Upside scenario: (Probability 70%)

If the price broke confirmations the MA200 at 9750. Upside target to 10500.

Downside scenario: (Probability 30%)

Stop loss level at 9300 (Broke the support level). Do a tight stop loss on this level. If a break down appeared, the price will potentially continue to 8700 (Support level).

HEAD OFFICE

Reliance Building

Jl. Pluit Sakti Raya No. 27AB,
Pluit
Jakarta 14450
T. +62 21 661 7768
F. +62 21 661 9884

RESEARCH DIVISION

Robertus Yanuar Hardy

robertus@reliance-securities.com

Rio Adrianus

rio.adrianus@reliance-securities.com

Lanjar Nafi Taulat I

lanjar@reliance-securities.com

Aji Setiawan

aji@reliance-securities.com

Shanti Dwi Jayanti

santi@reliance-securities.com

Senior Analyst

Research Analyst

Technical Research Analyst

Associate Research Analyst

Associate Research Analyst

EQUITY DIVISION

Jakarta- Pluit

Jl. Pluit Sakti Raya No. 27AB,
Pluit
Jakarta 14450
T. +62 21 661 7768
F. +62 21 661 9884

Bandung

Jl.Cisangkuy No.58
Bandung 40115
T. +62 22 721 8200
F. +62 22 721 9255

Surabaya - Gubeng

Jl. Bangka No. 22
Surabaya 60281
T. +62 31 501 1128
F. +62 31 503 3196

Makassar

Jl. Boto Lempangan No. 34 J
Makassar- Sulawesi Selatan
T. +62 411 3632388
F. +62 411 3614634

Jakarta - Sudirman

Menara Batavia Ground Floor
Jl.KH.Mas Mansyur Kav 126
Jakarta 10220
T. +62 21 57905455
F. +62 21 57950728

Tasikmalaya

Ruko Tasik Indah Plaza No.21
Jl. KHZ Mustofa No. 345
Tasikmalaya 46121
T. +62 265 345000
F. +62 265 345003

Surabaya - Diponegoro

Jl. Diponegoro No.26D
Surabaya 60261
T. +62 31 567 0388
F. +62 31 561 0528

Medan

Jl. Teuku Amir Hamzah No.40-O
Medan 20117
T. +62 61 6638592
F. +62 61 6638023

Jakarta - Kebon Jeruk

Plaza Kebon Jeruk
Jl.Raya Perjuangan Blok A/2
Jakarta 11530
T. +62 21 532 4074
F. +62 21 536 2157

Malang

Jl. Guntur No. 19
Malang 65112
T. +62 341 347 611
F. +62 341 347 615

Bali - Denpasar

Dewata Square Blok A3
Jl. Letda Tantular Renon
Denpasar 802361
T. +62 361 225099
F. +62 361 245099

Tangerang

Jl. Pahlawan Seribu Ruko BSD
Sektor 7 Blok RK kav. 9
Tangerang 15310
T. +62 21 5387495
F. +62 21 5387494

Pekanbaru

Jl. Jendral Sudirman No.73
Pekanbaru-Riau
T. +62 761 848414
F. +62 761 849456

Pontianak

Jl. MT Haryono No. 6
Pontianak 78121
T. +62 561 575674
F. +62 561 575670

Jakarta - Centro

Ruko Centro Residence Kav. 4-5
Tower C Lt. 1 No. 26-29
Jl. Macan, Daan Mogot
Jakarta 14450
T. +62 21 56945227
F. +62 21 56945226

Solo

Jl. Slamet Riyadi 330^a
Solo 57145
T. +62 271 736599
F. +62 271 733478

Balikpapan

Ruko Bukit Damai Indah
Blok I, No. 3, Rt.34
Jl. MT. Haryono, Gunung
Bahagia, Balikpapan Selatan
76114
T. +62 542 746313
F. +62 542 746317

IDX CORNER & INVESTMENT GALLERY

President University

Resto Plaza 1F - Jababeka
Education Park
Jl. Ki Hajar Dewantara Raya
Cikarang - Bekasi 17550
T. +62 21 89106030

Universitas Siliwangi Tasikmalaya

Jl. Siliwangi No. 24
Tasikmalaya 46151
T. +62 265 323685
F. +62 265 323534

Politeknik Kediri

Jl. Mayor Bismo No. 27
Kediri 64121
T. +62 354 683128
F. +62 354 683128

Universitas Muhammadiyah Sidoarjo

Jl. Majapahit 666 B
Sidoarjo, Jawa Timur
T. +62 31 8945444
F. +62 31 8949333

Universitas Tanjungpura Pontianak

Jl. Jendral Ahmad Yani
Pontianak 78124
T. +62 561 743465
F. +62 561 766840

Universitas Pesantren Tinggi Darul Ulum

Kompleks Pp Darul Ulu,
Peterongan
Jombang, Jawa Timur 60281
T. +62 321 873655
F. +62 321 875771

STIE "AUB" Surakarta

Jl. Mr. Sartono 97, Cengklik
Nusukan, Surakarta 57135
T. +62 271 854803
F. +62 271 853084

Universitas Surabaya

Jl. Raya Kalirungkut
Surabaya 60293
T. +62 31 298 1203
F. +62 31 298 1204

Universitas Muhammadiyah Gresik

Jl. Sumatra 101 GKB
Gresik 61121
T. +62 31 395 1414
F. +62 31 395 2585

Universitas Negeri Malang

Jl. Surabaya No. 6
Malang 65145
T. +62 341 585914
F. +62 341 55288

Universitas Muhammadiyah Malang

Jl. Raya Tlogomas 246
Malang 65144
T. +62 341 464318-9
F. +62 341 460782

FSEI IAIN Antasari

Jl. Ahmad Yani Km. 4,5
Banjarmasin
T. + 62 511 3265783

STIE Malangkececwara

Jl. Terusan Candi Kalasan
Malang 65142
T. +62 341 491813
F. +62 341 495619

STIESIA Surabaya

Jl. Menur Pumpungan 30
Surabaya
T. +62 31 5947505
F. +62 31 5932218

Universitas 17 Agustus 1945 Banyuwangi

Jl. Adi Sucipto 26
Banyuwangi, Jawa Timur
T. +62 333 419613
F. +62 333 419163

STIE Tri Bhakti

Jl. Teuku Umar No. 24
Cut Meutia Setiakawan,
Bekasi
T. +62 21 82429400,
82429500
F. +62 271 726156

Universitas Islam Kalimantan

Jl. Adiyaksa No. 2, Kayu
Tangi, Banjarmasin
T. + 62 511 3303871
F. + 62 511 3303871

STIKOM Bali

Jalan Puputan No. 86, Renon,
Denpasar
T. +62361 244445
F. +62361 264773

Universitas Muhammadiyah Pontianak

Fakultas Ekonomi UM
Pontianak
Jl. Ahmad Yani, No. 111,
Pontianak 78124
T. +62561 743465
F. +62561 766840

Universitas Negeri Makassar

Fakultas Ekonomi Gedung BT
Lt.2
Jl. A.P. Pettarani, Kampus
UNM, Gunungsari Baru
Makassar 90222
T. +62 411 889464 / 881244
F. +62 411 887604

STIE AAS Surakarta

Jl. Slamet Riyadi No. 361,
Kartasura, Surakarta
T. +62 271 726156
F. +62 271 726156

UPN "Veteran" Yogyakarta

Jl. Babarsari 2, Tambak Bayan
Yogyakarta
T. +62 274 485268
F. +62 274 487147

Disclaimer:

Information, opinions and recommendations contained in this document are presented by PT Reliance Securities Tbk. from sources that are considered reliable and dependable. This document is not an offer, invitation or any kind of representations to decide to buy or sell stock. Investment decisions taken based on this document is not the responsibility of PT Reliance Securities Tbk. PT Reliance Securities Tbk. reserves the right to change the contents of this document at any time without prior notice.