

IHSG



5386.69
3.82
0.07%

Vol (Mn): 3,058
Val (Bn): 5,839

LQ45



892.70
-1.07
-0.12%

Sector Indices	Last	Change	Change %
Agriculture	1850.72	13.25	0.72
Basic Industry	556.76	(2.40)	(0.43)
Consumer	2360.90	(14.07)	(0.60)
Finance	829.67	(0.97)	(0.12)
Infrastructure	1056.75	(4.73)	(0.45)
Manufacture	1397.48	(3.58)	(0.26)
Mining	1414.57	(15.04)	(1.06)
Misc Industry	1404.34	14.36	1.02
Property	510.76	(6.29)	(1.23)
Trade	854.73	(10.90)	(1.27)

Source: relitrade next G

Most Active	Last	Change %	Freq
TRAM	106	(24.8)	28,545
LPPF	11,725	(14.1)	27,013
BNLI	710	1.4	14,290
PPRO	304	(7.3)	7,885
BUMI	300	(5.7)	7,319

Most Volume	Last	Change %	M share
MYRX	124	0.0	17,001
TRAM	106	(24.8)	15,991
DEWA	67	(5.6)	4,630
BUMI	300	(5.7)	3,503
PPRO	304	(7.3)	2,952

Most Value	Last	Change %	Rp Bil
LPPF	11,725	(14.1)	678.87
ASII	8,325	1.5	317.87
BBCA	15,500	0.3	316.44
TLKM	3,850	0.0	307.58
BMRI	11,350	0.4	258.63

Source: relitrade next G

IHSG Technical Review



R3	5700
R2	5540
R1	5400
Last	5386.69
S1	5280
S2	5175
S3	5100

Comment:

Bearish momentum after pulled back resistance level.

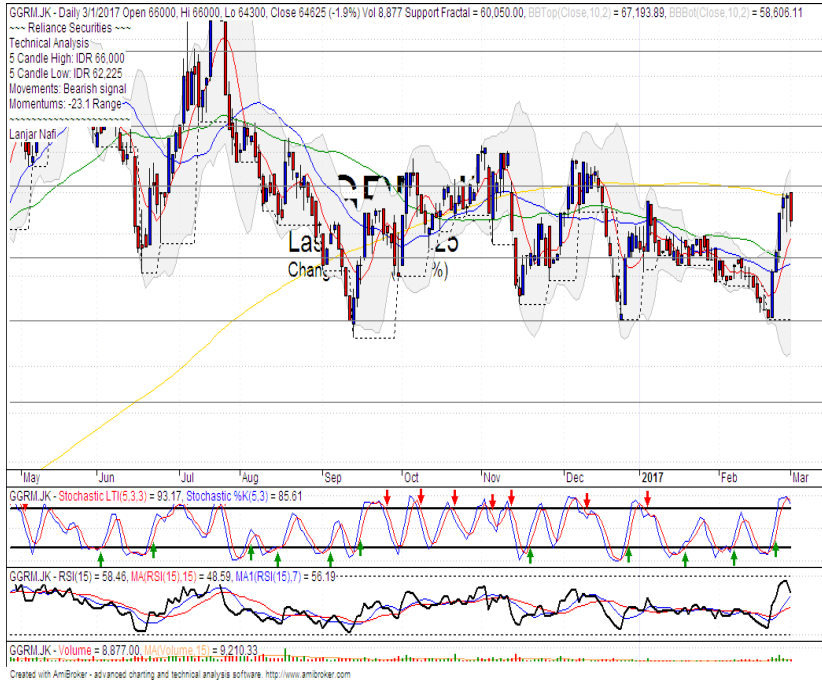
Stochastic, Limited bullish movement at near overbought oscillator.

RSI consolidations at middle oscillator.

Long term bullish trend movement.

Stop-loss level if broke the MA25 support level at 5310. Downside potential until 5285 (MA50 support level).

GGRM



R3	73200
R2	69375
R1	66250
Last	64625
S1	62900
S2	60000
S3	56500

SELL

Comment:
 Bearish engulfing after pulled back resistance and MA200 level.

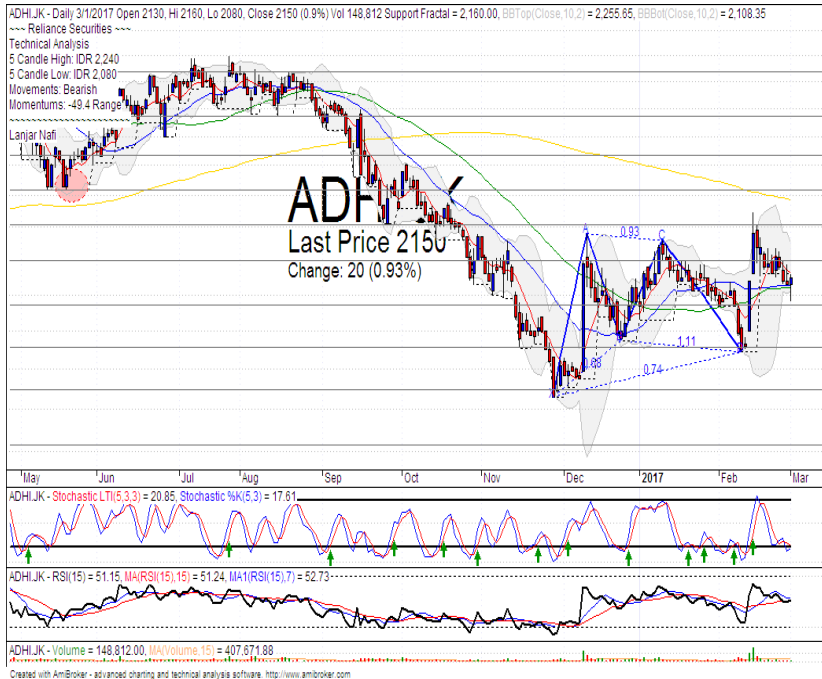
Stochastic, dead-cross at overbought oscillator. Broad downside target.

RSI bearish reversal momentum at overbought oscillator.

Long term bearish trend movement.

Stop-loss level if broke the MA7 support level at 63500. Downside potential until 60050.

ADHI



R3	2410
R2	2300
R1	2200
Last	2150
S1	2070
S2	1960
S3	1850

TRADING BUY

Comment:
 Rebounded at MA25 and MA50 support level. Reversal signal.

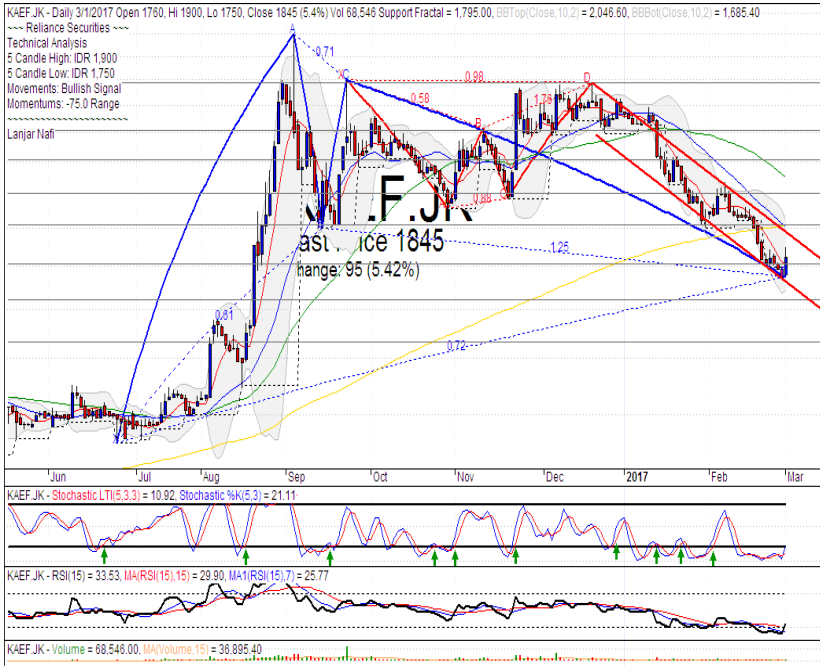
Stochastic Golden-cross at oversold oscillator. Broad upside potential.

RSI bullish consolidations momentum at middle oscillator.

Short term bearish trend movement.

Upside target to MA200 resistance level at 2380. Stop-loss level at 2080 (Broke the MA50 support level).

KAEF



R3	2410
R2	2200
R1	2020
Last	1845
S1	1810
S2	1650
S3	1465
TRADING BUY	

Comment:

Bullish engulfing candlestick pattern. Rebounded at channeling bearish trend support.

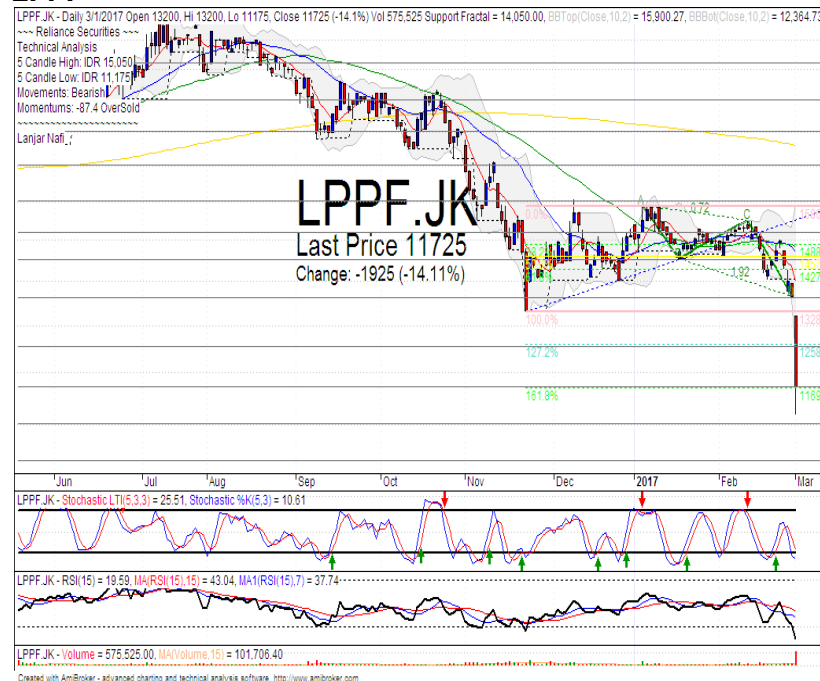
Stochastic golden-cross at oversold oscillator.

RSI bullish reversal momentum at oversold oscillator.

Medium term bearish trend movement.

Upside target to MA200 resistance level at 2020. Stop-loss level at 1780.

LPPF



R3	14525
R2	13600
R1	12500
Last	11700
S1	11700
S2	11000
S3	10325
TRADING BUY	

Comment:

Over reactions, Downside significant and false break 161.8% Fibonacci ratios.

Stochastic arrived at oversold oscillator.

RSI bearish momentum at oversold oscillator.

Long term bearish trend movement.

Upside target to Closing gap target at 13600. Stop-loss if broke support level at 11550.

Stocks	S2	S1	Closing Price	R1	R2	Technical Notes	Rec	Stop Loss	Rec Buy Prc	Target Price
Plantation										
AALI	14,000	14,900	15,175	15,850	16,700	Pulled back MA200	W	14,800		
LSIP	1,400	1,475	1,520	1,545	1,630	Consolidations	TB	1,470		1,560
Mining										
INCO	2,300	2,500	2,510	2,670	2,870	Consolidations	TB	2,450		2,670
Consumer										
UNVR	39,800	41,000	42,175	42,500	44,000	Oversold	W	42,000		
INDF	7,250	7,900	8,000	8,500	9,125	Sideways	W	7,850		
KLBF	1,420	1,485	1,495	1,540	1,600	Overbought	PS	1,480		
Trading										
ACES	710	755	755	810	870	Pulled back bearish trend	PS	750		
AKRA	6,100	6,100	6,250	6,600	6,925	Bearish momentum	S	6,200		
UNTR	21,000	22,500	23,900	24,000	25,325	Bearish momentum	S	23,500		
Property & Construction										
LPCX	4,580	4,600	4,610	4,820	5,125	2 star in the south	TB	4,580		4,800
WIKA	2,200	2,400	2,500	2,600	2,800	Sideways	PS	2,480		
BSDE	1,630	1,720	1,790	1,830	1,935	Bearish momentum	S	1,700		
WSKT	2,260	2,410	2,420	2,600	2,800	Oversold	W	2,400		
ADHI	1,850	1,950	2,150	2,200	2,300	rebouded at MA50	TB	2,100		2,300
Basic Industry & Chemical										
SMGR	8,725	9,350	9,400	9,900	10,500	Bullish consolidation	TB	9,100		9,800
CPIN	2,850	3,000	3,030	3,210	3,400	Broke support fractal	W	3,000		
MAIN	1,050	1,180	1,220	1,300	1,400	Oversold	PS	1,200		
INTP	14,600	14,600	15,325	15,500	16,350	Consolidations	W	15,000		
Miscellaneous										
SRIL	288	340	350	380	386	Consolidations at overbought	H	330		360
ASII	7,850	8,250	8,325	8,650	9,000	Rectangle	H	8,200		
Finance										
BBTN	1,850	1,980	2,060	2,100	2,200	Bearish momentum	PS	1,970		
BMRI	10,750	11,000	11,350	11,450	11,800	Consolidations	W	11,000		
BTPN	2,340	2,550	2,700	2,770	3,000	Stoch dead-cross	PS	2,600		
BJBR	2,140	2,210	2,300	2,470	2,760	Sideways	TB	2,200		2,570
BBRI	11,100	11,725	11,950	12,300	13,000	Consolidations	W	11,700		
Infrastructure										
TLKM	3,510	3,710	3,850	3,950	4,200	Sideways	TB	3,700		3,950
PGAS	2,360	2,560	2,790	2,800	3,050	Broke support fractal	W	2,550		

Source : Reliance Securities

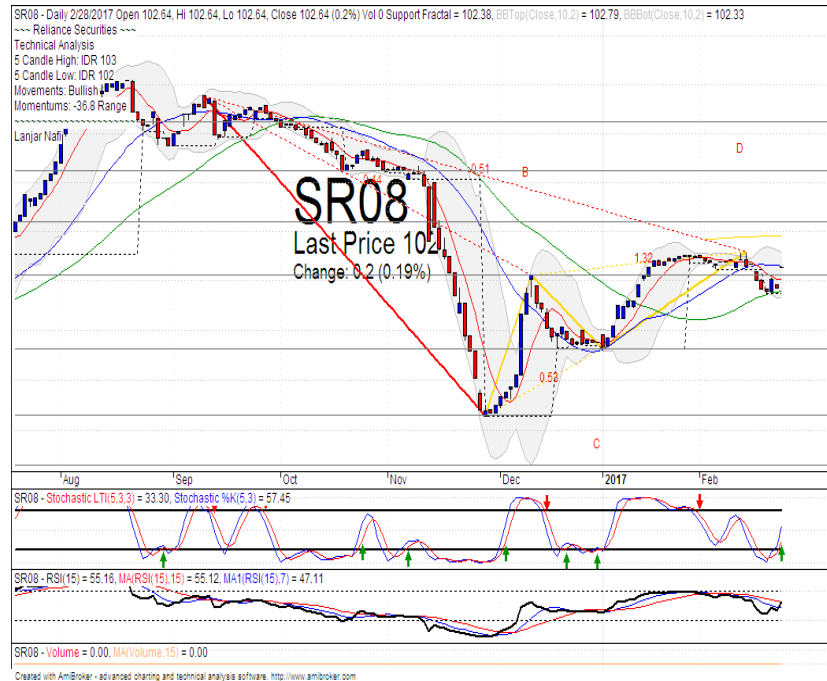
Analyst Conclusions:

The index rebounded at support level but having limited momentum.

Legend :

- B: BUY (allocate till 100% of the weighted capital to accumulate, higher than 50% upside probability)
- SB: SPECULATIVE BUY (allocate 25%-50% of the weighted capital to accumulate, 25%-50% upside probability)
- W: WAIT (wait for proper entry level, do the stop-loss if necessary)
- H: HOLD (hold the portfolio position, aim for the best price to distribute)
- PS: PARTIAL SELL (distribute 25%-50% part of the portfolio, 25%-50% downside probability)
- S: SELL (distribute till 100% of the portfolio, higher than 50% downside probability)
- TB: TRADING BUY (short term or intraday trading within a tight trading range. Highly speculative).

SR 08



R3	104.10
R2	103.62
R1	103.08
Last	102.65
S1	102.56
S2	101.82
S3	101.14

BUY

Comment:

Rebounded at MA50 support level. Bullish momentum after broke the resistance level.

Stochastic golden-cross at oversold oscillator.

RSI consolidations momentum with broad upside potential.

Medium term bullish trend movement.

Upside target to 102.97 (MA200 resistance target level). Stop-loss level if broke the MA50 support level at 102.30.

Indonesian Technical Bond

Ticker	Resistance	Price	Support	Weekly	Weekly	Indicator			Moving Average			
	Fractal	3/1/2017	Fractal	High	Low	Stochastic	RSI	B. Band	25 Days	50 Days	200 Days	
FR34	120.37	120.11	120.06	120.31	120.11	Neutral	Bullish	Neutral	Upper Bands	Under	Upper	Under
FR43	112.57	112.51	112.33	112.57	112.47	Neutral	Bearish	Neutral	Upper Bands	Upper	Upper	Under
FR47	115.82	115.86	115.11	115.86	115.53	Neutral	Bullish	Neutral	Upper Bands	Upper	Upper	Under
FR53	103.90	103.61	103.54	103.91	103.62	Neutral	Bullish	Neutral	Upper Bands	Under	Upper	Under
FR54	112.47	112.25	111.93	112.47	112.03	Neutral	Bearish	Neutral	Upper Bands	Upper	Upper	Under
FR56	106.37	106.28	105.23	106.37	105.81	Overbought	Bearish	Neutral	Upper Bands	Upper	Upper	Under
FR58	101.83	101.74	101.46	101.83	101.62	Neutral	Bearish	Neutral	Upper Bands	Upper	Upper	Under
FR59	96.50	96.37	96.01	96.63	96.28	Neutral	Bearish	Neutral	Lower Bands	Upper	Upper	Under
FR64	87.00	86.91	86.69	86.91	86.75	Neutral	Bullish	Neutral	Upper Bands	Upper	Upper	Under
FR66	98.71	98.63	98.56	98.64	98.63	Neutral	Bullish	Neutral	Upper Bands	Upper	Upper	Upper
FR68	102.72	102.63	102.46	103.05	102.59	Neutral	Bearish	Neutral	Upper Bands	Upper	Upper	Under
FR69	102.02	101.97	101.79	102.02	101.86	Neutral	Bullish	Neutral	Upper Bands	Upper	Upper	Under
FR70	104.88	104.62	104.11	104.88	104.50	Overbought	Bearish	Neutral	Upper Bands	Upper	Upper	Under
FR71	107.94	107.97	107.52	107.98	107.70	Overbought	Bullish	Neutral	Upper Bands	Upper	Upper	Under
FR72	102.14	101.68	101.15	102.09	101.46	Overbought	Bearish	Neutral	Upper Bands	Upper	Under	Under
FR73	107.08	107.08	106.19	107.08	106.32	Overbought	Bullish	Neutral	Upper Bands	Upper	Upper	Under
ORI13	98.21	98.44	98.07	98.44	98.15	Overbought	Bullish	Neutral	Middle Bands	Upper	Upper	Upper
ORI12	103.62	103.36	103.42	103.62	103.46	Neutral	Bearish	Neutral	Lower Bands	Under	Upper	Under
SR06	100.28	100.01	100.11	100.32	100.03	Neutral	Bullish	Neutral	Upper Bands	Under	Under	Under
SR08	102.77	102.46	102.38	102.64	102.42	Neutral	Bullish	Neutral	Lower Bands	Under	Under	Under

Analyst: Lanjar Nafi, lanjar@reliance-securities.com

Source: Reliance Research

Legend :

- Movement: Bullish and Bearish (Indicator Stochastic)
- Momentum: Oversold, Overbought and Neutral (Indicator RSI)
- Resistance Fractal: Strong Resistance
- Support Fractal: Strong Support
- Green: Good Conditions
- Red: Poor Conditions

HEAD OFFICE

Reliance Building

Jl. Pluit Sakti Raya No. 27AB,
Pluit
Jakarta 14450
T. +62 21 661 7768
F. +62 21 661 9884

RESEARCH DIVISION

Robertus Yanuar Hardy

robertus@reliance-securities.com

Rio Adrianus

rio.adrianus@reliance-securities.com

Lanjar Nafi Taulat I

lanjar@reliance-securities.com

Aji Setiawan

aji@reliance-securities.com

Shanti Dwi Jayanti

santi@reliance-securities.com

Senior Analyst

Research Analyst

Technical Research Analyst

Associate Research Analyst

Associate Research Analyst

EQUITY DIVISION

Jakarta- Pluit

Jl. Pluit Sakti Raya No. 27AB,
Pluit
Jakarta 14450
T. +62 21 661 7768
F. +62 21 661 9884

Bandung

Jl.Cisangkuy No.58
Bandung 40115
T. +62 22 721 8200
F. +62 22 721 9255

Surabaya - Gubeng

Jl. Bangka No. 22
Surabaya 60281
T. +62 31 501 1128
F. +62 31 503 3196

Makassar

Jl. Boto Lempangan No. 34 J
Makassar- Sulawesi Selatan
T. +62 411 3632388
F. +62 411 3614634

Jakarta - Sudirman

Menara Batavia Ground Floor
Jl.KH.Mas Mansyur Kav 126
Jakarta 10220
T. +62 21 57905455
F. +62 21 57950728

Tasikmalaya

Ruko Tasik Indah Plaza No.21
Jl. KHZ Mustofa No. 345
Tasikmalaya 46121
T. +62 265 345000
F. +62 265 345003

Surabaya - Diponegoro

Jl. Diponegoro No.26D
Surabaya 60261
T. +62 31 567 0388
F. +62 31 561 0528

Medan

Jl. Teuku Amir Hamzah No.40-O
Medan 20117
T. +62 61 6638592
F. +62 61 6638023

Jakarta - Kebon Jeruk

Plaza Kebon Jeruk
Jl.Raya Perjuangan Blok A/2
Jakarta 11530
T. +62 21 532 4074
F. +62 21 536 2157

Malang

Jl. Guntur No. 19
Malang 65112
T. +62 341 347 611
F. +62 341 347 615

Bali - Denpasar

Dewata Square Blok A3
Jl. Letda Tantular Renon
Denpasar 802361
T. +62 361 225099
F. +62 361 245099

Tangerang

Jl. Pahlawan Seribu Ruko BSD
Sektor 7 Blok RK kav. 9
Tangerang 15310
T. +62 21 5387495
F. +62 21 5387494

Pekanbaru

Jl. Jendral Sudirman No.73
Pekanbaru-Riau
T. +62 761 848414
F. +62 761 849456

Pontianak

Jl. MT Haryono No. 6
Pontianak 78121
T. +62 561 575674
F. +62 561 575670

Jakarta - Centro

Ruko Centro Residence Kav. 4-5
Tower C Lt. 1 No. 26-29
Jl. Macan, Daan Mogot
Jakarta 14450
T. +62 21 56945227
F. +62 21 56945226

Solo

Jl. Slamet Riyadi 330^a
Solo 57145
T. +62 271 736599
F. +62 271 733478

Balikpapan

Ruko Bukit Damai Indah
Blok I, No. 3, Rt.34
Jl. MT. Haryono, Gunung
Bahagia, Balikpapan Selatan
76114
T. +62 542 746313
F. +62 542 746317

IDX CORNER & INVESTMENT GALLERY

President University

Resto Plaza 1F - Jababeka
Education Park
Jl. Ki Hajar Dewantara Raya
Cikarang - Bekasi 17550
T. +62 21 89106030

Universitas Siliwangi Tasikmalaya

Jl. Siliwangi No. 24
Tasikmalaya 46151
T. +62 265 323685
F. +62 265 323534

Politeknik Kediri

Jl. Mayor Bismo No. 27
Kediri 64121
T. +62 354 683128
F. +62 354 683128

Universitas Muhammadiyah Sidoarjo

Jl. Majapahit 666 B
Sidoarjo, Jawa Timur
T. +62 31 8945444
F. +62 31 8949333

Universitas Tanjungpura Pontianak

Jl. Jendral Ahmad Yani
Pontianak 78124
T. +62 561 743465
F. +62 561 766840

Universitas Pesantren Tinggi Darul Ulum

Kompleks Pp Darul Ulu,
Peterongan
Jombang, Jawa Timur 60281
T. +62 321 873655
F. +62 321 875771

STIE "AUB" Surakarta

Jl. Mr. Sartono 97, Cengklik
Nusukan, Surakarta 57135
T. +62 271 854803
F. +62 271 853084

Universitas Surabaya

Jl. Raya Kalirungkut
Surabaya 60293
T. +62 31 298 1203
F. +62 31 298 1204

Universitas Muhammadiyah Gresik

Jl. Sumatra 101 GKB
Gresik 61121
T. +62 31 395 1414
F. +62 31 395 2585

Universitas Negeri Malang

Jl. Surabaya No. 6
Malang 65145
T. +62 341 585914
F. +62 341 55288

Universitas Muhammadiyah Malang

Jl. Raya Tlogomas 246
Malang 65144
T. +62 341 464318-9
F. +62 341 460782

FSEI IAIN Antasari

Jl. Ahmad Yani Km. 4,5
Banjarmasin
T. + 62 511 3265783

STIE Malangkececwara

Jl. Terusan Candi Kalasan
Malang 65142
T. +62 341 491813
F. +62 341 495619

STIESIA Surabaya

Jl. Menur Pumpungan 30
Surabaya
T. +62 31 5947505
F. +62 31 5932218

Universitas 17 Agustus 1945 Banyuwangi

Jl. Adi Sucipto 26
Banyuwangi, Jawa Timur
T. +62 333 419613
F. +62 333 419163

STIE Tri Bhakti

Jl. Teuku Umar No. 24
Cut Meutia Setiakawan,
Bekasi
T. +62 21 82429400,
82429500
F. +62 271 726156

Universitas Islam Kalimantan

Jl. Adiyaksa No. 2, Kayu
Tangi, Banjarmasin
T. + 62 511 3303871
F. + 62 511 3303871

STIKOM Bali

Jalan Puputan No. 86, Renon,
Denpasar
T. +62361 244445
F. +62361 264773

Universitas Muhammadiyah Pontianak

Fakultas Ekonomi UM
Pontianak
Jl. Ahmad Yani, No. 111,
Pontianak 78124
T. +62561 743465
F. +62561 766840

Universitas Negeri Makassar

Fakultas Ekonomi Gedung BT
Lt.2
Jl. A.P. Pettarani, Kampus
UNM, Gunungsari Baru
Makassar 90222
T. +62 411 889464 / 881244
F. +62 411 887604

STIE AAS Surakarta

Jl. Slamet Riyadi No. 361,
Kartasura, Surakarta
T. +62 271 726156
F. +62 271 726156

UPN "Veteran" Yogyakarta

Jl. Babarsari 2, Tambak Bayan
Yogyakarta
T. +62 274 485268
F. +62 274 487147

Disclaimer:

Information, opinions and recommendations contained in this document are presented by PT Reliance Securities Tbk. from sources that are considered reliable and dependable. This document is not an offer, invitation or any kind of representations to decide to buy or sell stock. Investment decisions taken based on this document is not the responsibility of PT Reliance Securities Tbk. PT Reliance Securities Tbk. reserves the right to change the contents of this document at any time without prior notice.