

IHSG



5408.25
45.20
0.84%

Vol (Mn): 7,679
Val (Bn): 7,380

LQ45



898.13
10.23
1.15%

Sector Indices	Last	Change	Change %
Agriculture	1851.26	0.54	0.03
Basic Industry	562.73	5.97	1.06
Consumer	2414.71	53.81	2.23
Finance	829.76	0.08	0.01
Infrastructure	1055.63	(1.12)	(0.11)
Manufacture	1424.31	26.83	1.88
Mining	1430.54	15.97	1.12
Misc Industry	1427.17	22.82	1.60
Property	510.94	0.18	0.03
Trade	862.20	7.47	0.87

Source: relitrade next G

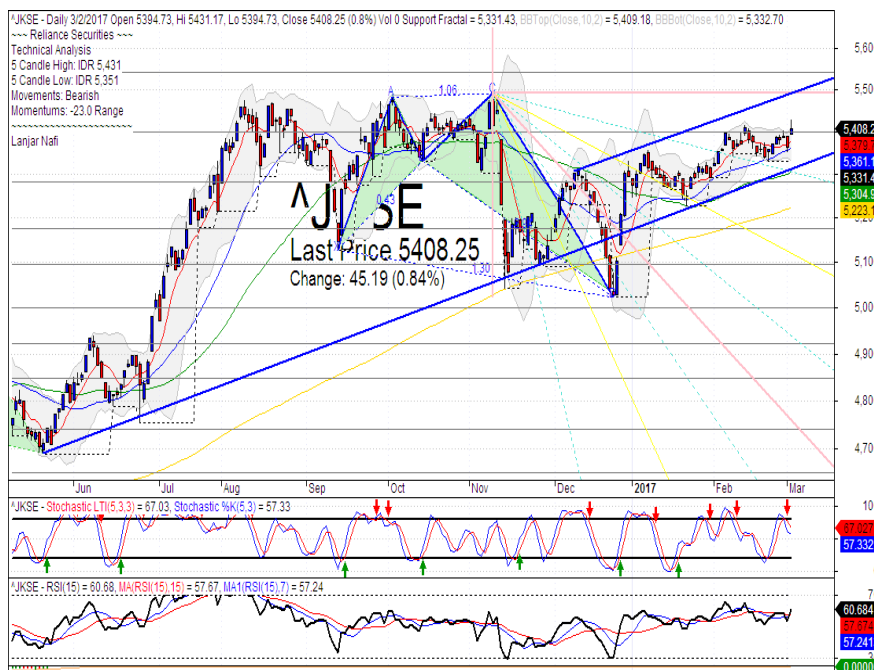
Most Active	Last	Change %	Freq
SRIL	384	9.7	21,097
LPPF	12,925	10.2	16,041
BAPA	88	2.3	8,813
BUMI	292	(2.7)	8,805
HMSP	4,090	6.2	7,805

Most Volume	Last	Change %	M share
MYRX	125	0.8	22,330
SRIL	384	9.7	9,094
BUMI	292	(2.7)	4,859
DEWA	65	(3.0)	3,293
BRMS	88	(2.2)	2,657

Most Value	Last	Change %	Rp Bil
LPPF	12,925	10.2	737.85
ASII	8,475	1.8	530.51
HMSP	4,090	6.2	462.94
SRIL	384	9.7	338.49
MYRX	125	0.8	279.13

Source: relitrade next G

IHSG Technical Review



R3	5850
R2	5700
R1	5540
Last	5408.25
S1	5400
S2	5280
S3	5175

Comment:

Bullish consolidations with break out resistance level.

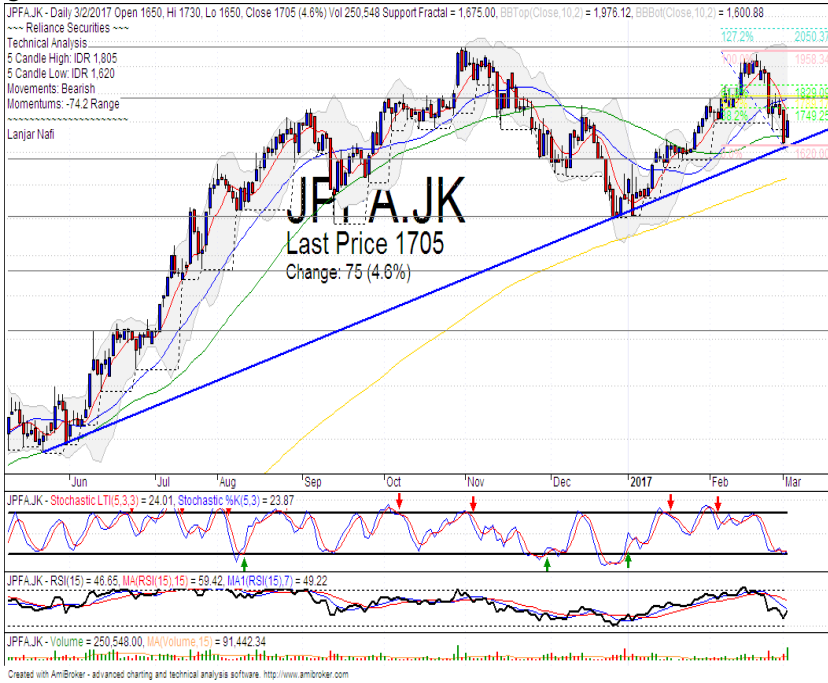
Stochastic, bearish movement after dead-cross at overbought oscillator.

RSI consolidations at middle oscillator.

Long term bullish trend movement.

Stop-loss level if broke the support level at 5380. Downside potential until 5304 (MA50 support level).

JPFA



R3	2170
R2	1980
R1	1780
Last	1705
S1	1580
S2	1400
S3	1265
SPECULATIVE BUY	

Comment:

Bullish harami candlestick pattern with rebounded at bullish trend support level. Huge trading volume. Reversal signal.

Stochastic, golden-cross at oversold oscillator. Broad upside target.

RSI bullish reversal momentum at near oversold oscillator.

Long term bullish trend movement.

Upside target to 1830 until 2050 (Fibonacci retracement target level). Stop-loss level if broke the bullish trend support level at 1590.

LPKR



R3	855
R2	800
R1	750
Last	725
S1	700
S2	660
S3	625
TRADING BUY	

Comment:

Tweezers bottom candlestick pattern. Huge trading volume. Reversal signal.

Stochastic Golden-cross at oversold oscillator. Broad upside potential.

RSI bullish reversal momentum at near oversold oscillator.

Long term bearish trend movement.

Upside target to upper Bollinger bands resistance level at 785. Stop-loss level at 690 if broke support and failed confirmations.

MPPA



R3	1530
R2	1430
R1	1320
Last	1220
S1	1200
S2	1120
S3	1050
TRADING BUY	

Comment:

Tweezers bottom candlestick pattern. Huge trading volume. Reversal signal.

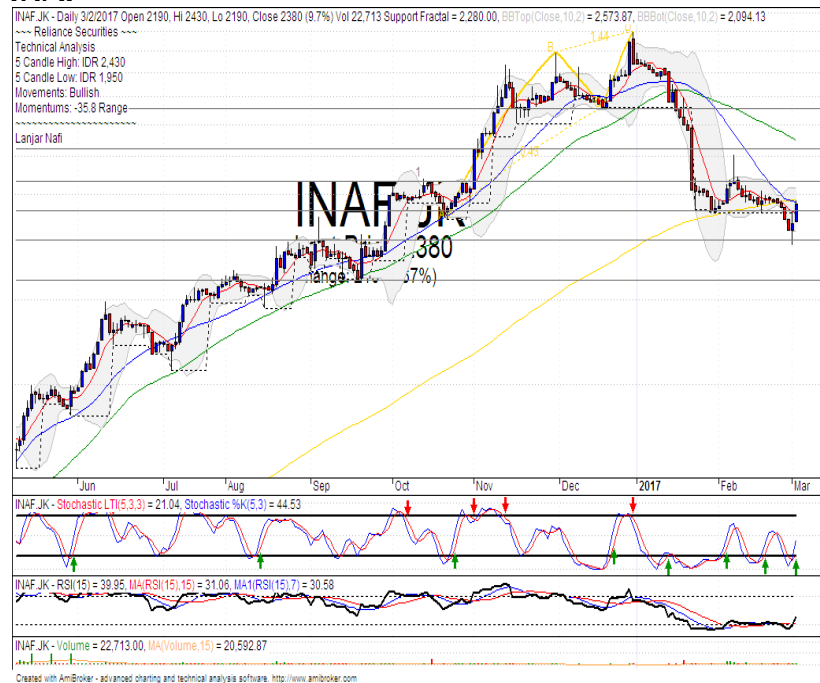
Stochastic bullish movement at oversold oscillator after golden-cross appeared.

RSI bullish reversal momentum at oversold oscillator.

Long term bearish trend movement.

Upside target to MA50 resistance level at 1345. Stop-loss level at 1180 if Broke the support level.

INAF



R3	3770
R2	3130
R1	2670
Last	2380
S1	2300
S2	1990
S3	1660
BUY	

Comment:

Confirmations the bullish harami candlestick pattern. Reversal signal. Whipsaw at MA200 indications.

Stochastic golden-cross at oversold oscillator.

RSI reversal momentum after consolidations at oversold oscillator.

Short term bearish trend movement.

Upside target to MA50 at 3250. Stop-loss level if broke the support level 2220. Recommended buying price at 2360.

Stocks	S2	S1	Closing Price	R1	R2	Technical Notes	Rec	Stop Loss	Rec Buy Prc	Target Price
Plantation										
AALI	14,000	14,900	15,325	15,850	16,700	Consolidations	W	14,800		
LSIP	1,400	1,475	1,525	1,545	1,630	Consolidations	TB	1,470		1,560
Mining										
INCO	2,300	2,500	2,560	2,670	2,870	Consolidations	TB	2,450		2,670
Consumer										
UNVR	39,800	41,000	42,100	42,500	44,000	Oversold	W	42,000		
INDF	7,250	7,900	8,025	8,500	9,125	Sideways	W	7,850		
KLBF	1,420	1,485	1,475	1,540	1,600	Bearish momentum	PS	1,480		
Trading										
ACES	710	755	755	810	870	Pulled back bearish trend	PS	750		
AKRA	6,100	6,100	6,250	6,600	6,925	Bearish momentum	S	6,200		
UNTR	21,000	22,500	25,075	24,000	25,325	Bearish momentum	S	23,500		
Property & Construction										
LPCX	4,580	4,600	4,640	4,820	5,125	2 star in the south	TB	4,580		4,800
WIKA	2,200	2,400	2,510	2,600	2,800	Sideways	PS	2,480		
BSDE	1,630	1,720	1,785	1,830	1,935	Bearish momentum	S	1,700		
WSKT	2,260	2,410	2,440	2,600	2,800	bullish homing pigeon	PS	2,400		
ADHI	1,850	1,950	2,180	2,200	2,300	Rebounded at MA50	SB	2,100	2,170	2,300
Basic Industry & Chemical										
SMGR	8,725	9,350	9,425	9,900	10,500	Bearish momentum	PS	9,100		
CPIN	2,850	3,000	3,170	3,210	3,400	Consolidations	PS	3,000		
MAIN	1,050	1,180	1,240	1,300	1,400	Oversold	PS	1,200		
INTP	14,600	14,600	15,400	15,500	16,350	Consolidations	W	15,000		
Miscellaneous										
SRIL	340	380	384	386	400	Consolidations at overbought	H	330		360
ASII	7,850	8,250	8,475	8,650	9,000	Rectangle	H	8,400		8,650
Finance										
BBTN	1,980	2,100	2,120	2,200	2,360	Consolidations	TB	2,080		2,250
BMRI	10,750	11,000	11,325	11,450	11,800	Consolidations	W	11,000		
BTPN	2,340	2,550	2,750	2,770	3,000	Consolidations	H	2,600		
BJBR	2,140	2,210	2,310	2,470	2,760	Sideways	TB	2,200		2,570
BBRI	11,100	11,725	11,850	12,300	13,000	Consolidations	W	11,700		
Infrastructure										
TLKM	3,510	3,710	3,830	3,950	4,200	Sideways	W	3,700		
PGAS	2,360	2,560	2,770	2,800	3,050	Broke support fractal	W	2,550		

Source : Reliance Securities

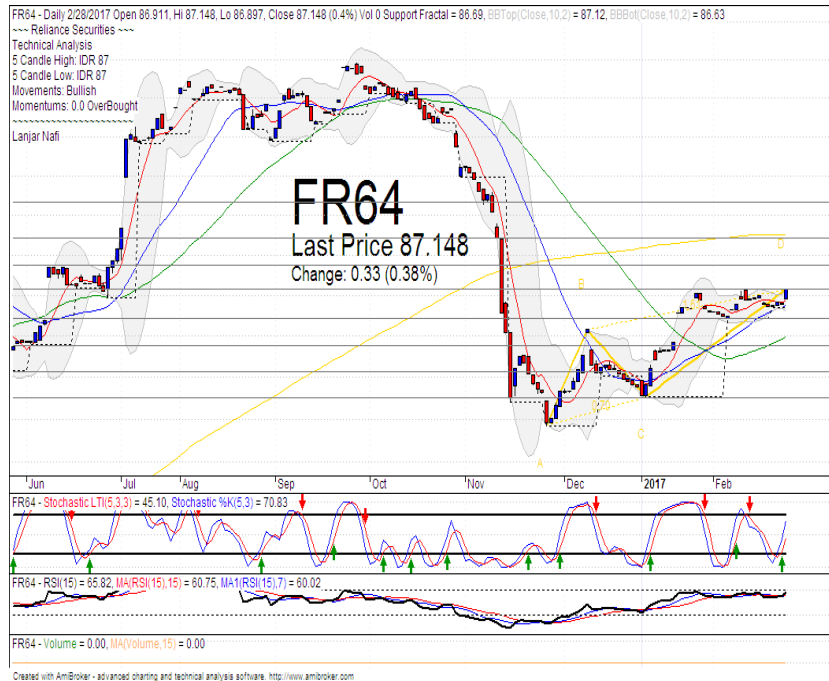
Analyst Conclusions:

The index rebounded at support level but having limited momentum.

Legend :

- B: BUY (allocate till 100% of the weighted capital to accumulate, higher than 50% upside probability)
- SB: SPECULATIVE BUY (allocate 25%-50% of the weighted capital to accumulate, 25%-50% upside probability)
- W: WAIT (wait for proper entry level, do the stop-loss if necessary)
- H: HOLD (hold the portfolio position, aim for the best price to distribute)
- PS: PARTIAL SELL (distribute 25%-50% part of the portfolio, 25%-50% downside probability)
- S: SELL (distribute till 100% of the portfolio, higher than 50% downside probability)
- TB: TRADING BUY (short term or intraday trading within a tight trading range. Highly speculative).

FR 64



R3	88.41
R2	87.74
R1	87.15
Last	86.42
S1	85.80
S2	85.13
S3	84.51
BUY	

Comment:
Bullish momentum after rebounded at MA25 support level.
Stochastic bullish movement after golden-cross at oversold oscillator.
RSI consolidations momentum at near overbought.
Medium term bullish trend movement.
Upside target to 87.74 (Resistance target level). Stop-loss level if broke the MA25 support level at 86.70.

Indonesian Technical Bond

Ticker	Resistance	Price	Support	Weekly	Weekly	Indicator			Moving Average			
	Fractal	3/2/2017	Fractal	High	Low	Stochastic	RSI	B. Band	25 Days	50 Days	200 Days	
FR34	120.37	120.08	120.06	120.31	120.11	Neutral	Bullish	Neutral	Upper Bands	Under	Upper	Under
FR43	112.57	112.55	112.33	112.57	112.47	Neutral	Bearish	Neutral	Upper Bands	Upper	Upper	Under
FR47	115.82	116.14	115.44	116.14	115.53	Neutral	Bullish	Neutral	Upper Bands	Upper	Upper	Under
FR53	103.91	103.65	103.54	103.91	103.62	Neutral	Bearish	Neutral	Upper Bands	Upper	Upper	Under
FR54	112.47	112.57	111.93	112.57	112.17	Neutral	Bullish	Neutral	Upper Bands	Upper	Upper	Under
FR56	106.37	106.23	105.76	106.37	105.81	Neutral	Bearish	Neutral	Upper Bands	Upper	Upper	Under
FR58	101.83	102.00	101.46	102.00	101.69	Neutral	Bearish	Neutral	Upper Bands	Upper	Upper	Under
FR59	96.63	96.61	96.01	96.63	96.39	Overbought	Bearish	Neutral	Upper Bands	Upper	Upper	Under
FR64	87.00	87.15	86.69	87.15	86.75	Neutral	Bullish	Neutral	Upper Bands	Upper	Upper	Under
FR66	98.71	98.61	98.56	98.64	98.63	Neutral	Bullish	Neutral	Upper Bands	Under	Upper	Upper
FR68	103.05	102.74	102.46	103.05	102.59	Neutral	Bearish	Neutral	Upper Bands	Upper	Upper	Under
FR69	102.02	102.05	101.79	102.10	101.86	Neutral	Bullish	Neutral	Upper Bands	Upper	Upper	Under
FR70	104.88	104.63	104.11	104.88	104.62	Neutral	Bearish	Neutral	Upper Bands	Upper	Upper	Under
FR71	107.94	108.19	107.52	108.21	107.90	Overbought	Bullish	Neutral	Upper Bands	Upper	Upper	Under
FR72	102.09	101.97	101.15	102.09	101.54	Neutral	Bearish	Neutral	Upper Bands	Upper	Under	Under
FR73	107.08	107.47	106.19	107.47	106.53	Overbought	Bullish	Neutral	Upper Bands	Upper	Upper	Under
ORI13	98.21	98.44	98.07	98.44	98.15	Overbought	Bullish	Neutral	Middle Bands	Upper	Upper	Upper
ORI12	103.62	103.33	103.42	103.62	103.46	Neutral	Bearish	Neutral	Lower Bands	Under	Upper	Under
SR06	100.28	100.00	100.11	100.32	100.03	Neutral	Bullish	Neutral	Upper Bands	Under	Under	Under
SR08	102.64	102.48	102.38	102.64	102.47	Neutral	Bullish	Neutral	Lower Bands	Under	Under	Under

Analyst: Lanjar Nafi, lanjar@reliance-securities.com

Source: Reliance Research

Legend :

- Movement: Bullish and Bearish (Indicator Stochastic)
- Momentum: Oversold, Overbought and Neutral (Indicator RSI)
- Resistance Fractal: Strong Resistance
- Support Fractal: Strong Support
- Green: Good Conditions
- Red: Poor Conditions

HEAD OFFICE

Reliance Building

Jl. Pluit Sakti Raya No. 27AB,
Pluit
Jakarta 14450
T. +62 21 661 7768
F. +62 21 661 9884

RESEARCH DIVISION

Robertus Yanuar Hardy

robertus@reliance-securities.com

Rio Adrianus

rio.adrianus@reliance-securities.com

Lanjar Nafi Taulat I

lanjar@reliance-securities.com

Aji Setiawan

aji@reliance-securities.com

Shanti Dwi Jayanti

santi@reliance-securities.com

Senior Analyst

Research Analyst

Technical Research Analyst

Associate Research Analyst

Associate Research Analyst

EQUITY DIVISION

Jakarta- Pluit

Jl. Pluit Sakti Raya No. 27AB,
Pluit
Jakarta 14450
T. +62 21 661 7768
F. +62 21 661 9884

Bandung

Jl.Cisangkuy No.58
Bandung 40115
T. +62 22 721 8200
F. +62 22 721 9255

Surabaya - Gubeng

Jl. Bangka No. 22
Surabaya 60281
T. +62 31 501 1128
F. +62 31 503 3196

Makassar

Jl. Boto Lempangan No. 34 J
Makassar- Sulawesi Selatan
T. +62 411 3632388
F. +62 411 3614634

Jakarta - Sudirman

Menara Batavia Ground Floor
Jl.KH.Mas Mansyur Kav 126
Jakarta 10220
T. +62 21 57905455
F. +62 21 57950728

Tasikmalaya

Ruko Tasik Indah Plaza No.21
Jl. KHZ Mustofa No. 345
Tasikmalaya 46121
T. +62 265 345000
F. +62 265 345003

Surabaya - Diponegoro

Jl. Diponegoro No.26D
Surabaya 60261
T. +62 31 567 0388
F. +62 31 561 0528

Medan

Jl. Teuku Amir Hamzah No.40-O
Medan 20117
T. +62 61 6638592
F. +62 61 6638023

Jakarta - Kebon Jeruk

Plaza Kebon Jeruk
Jl.Raya Perjuangan Blok A/2
Jakarta 11530
T. +62 21 532 4074
F. +62 21 536 2157

Malang

Jl. Guntur No. 19
Malang 65112
T. +62 341 347 611
F. +62 341 347 615

Bali - Denpasar

Dewata Square Blok A3
Jl. Letda Tantular Renon
Denpasar 802361
T. +62 361 225099
F. +62 361 245099

Tangerang

Jl. Pahlawan Seribu Ruko BSD
Sektor 7 Blok RK kav. 9
Tangerang 15310
T. +62 21 5387495
F. +62 21 5387494

Pekanbaru

Jl. Jendral Sudirman No.73
Pekanbaru-Riau
T. +62 761 848414
F. +62 761 849456

Pontianak

Jl. MT Haryono No. 6
Pontianak 78121
T. +62 561 575674
F. +62 561 575670

Jakarta - Centro

Ruko Centro Residence Kav. 4-5
Tower C Lt. 1 No. 26-29
Jl. Macan, Daan Mogot
Jakarta 14450
T. +62 21 56945227
F. +62 21 56945226

Solo

Jl. Slamet Riyadi 330^a
Solo 57145
T. +62 271 736599
F. +62 271 733478

Balikpapan

Ruko Bukit Damai Indah
Blok I, No. 3, Rt.34
Jl. MT. Haryono, Gunung
Bahagia, Balikpapan Selatan
76114
T. +62 542 746313
F. +62 542 746317

IDX CORNER & INVESTMENT GALLERY

President University

Resto Plaza 1F - Jababeka
Education Park
Jl. Ki Hajar Dewantara Raya
Cikarang - Bekasi 17550
T. +62 21 89106030

Universitas Siliwangi Tasikmalaya

Jl. Siliwangi No. 24
Tasikmalaya 46151
T. +62 265 323685
F. +62 265 323534

Politeknik Kediri

Jl. Mayor Bismo No. 27
Kediri 64121
T. +62 354 683128
F. +62 354 683128

Universitas Muhammadiyah Sidoarjo

Jl. Majapahit 666 B
Sidoarjo, Jawa Timur
T. +62 31 8945444
F. +62 31 8949333

Universitas Tanjungpura Pontianak

Jl. Jendral Ahmad Yani
Pontianak 78124
T. +62 561 743465
F. +62 561 766840

Universitas Pesantren Tinggi Darul Ulum

Kompleks Pp Darul Ulu,
Peterongan
Jombang, Jawa Timur 60281
T. +62 321 873655
F. +62 321 875771

STIE "AUB" Surakarta

Jl. Mr. Sartono 97, Cengklik
Nusukan, Surakarta 57135
T. +62 271 854803
F. +62 271 853084

Universitas Surabaya

Jl. Raya Kalirungkut
Surabaya 60293
T. +62 31 298 1203
F. +62 31 298 1204

Universitas Muhammadiyah Gresik

Jl. Sumatra 101 GKB
Gresik 61121
T. +62 31 395 1414
F. +62 31 395 2585

Universitas Negeri Malang

Jl. Surabaya No. 6
Malang 65145
T. +62 341 585914
F. +62 341 55288

Universitas Muhammadiyah Malang

Jl. Raya Tlogomas 246
Malang 65144
T. +62 341 464318-9
F. +62 341 460782

FSEI IAIN Antasari

Jl. Ahmad Yani Km. 4,5
Banjarmasin
T. + 62 511 3265783

STIE Malangkececwara

Jl. Terusan Candi Kalasan
Malang 65142
T. +62 341 491813
F. +62 341 495619

STIESIA Surabaya

Jl. Menur Pumpungan 30
Surabaya
T. +62 31 5947505
F. +62 31 5932218

Universitas 17 Agustus 1945 Banyuwangi

Jl. Adi Sucipto 26
Banyuwangi, Jawa Timur
T. +62 333 419613
F. +62 333 419163

STIE Tri Bhakti

Jl. Teuku Umar No. 24
Cut Meutia Setiakawan,
Bekasi
T. +62 21 82429400,
82429500
F. +62 271 726156

Universitas Islam Kalimantan

Jl. Adiyaksa No. 2, Kayu
Tangi, Banjarmasin
T. + 62 511 3303871
F. + 62 511 3303871

STIKOM Bali

Jalan Puputan No. 86, Renon,
Denpasar
T. +62361 244445
F. +62361 264773

Universitas Muhammadiyah Pontianak

Fakultas Ekonomi UM
Pontianak
Jl. Ahmad Yani, No. 111,
Pontianak 78124
T. +62561 743465
F. +62561 766840

Universitas Negeri Makassar

Fakultas Ekonomi Gedung BT
Lt.2
Jl. A.P. Pettarani, Kampus
UNM, Gunungsari Baru
Makassar 90222
T. +62 411 889464 / 881244
F. +62 411 887604

STIE AAS Surakarta

Jl. Slamet Riyadi No. 361,
Kartasura, Surakarta
T. +62 271 726156
F. +62 271 726156

UPN "Veteran" Yogyakarta

Jl. Babarsari 2, Tambak Bayan
Yogyakarta
T. +62 274 485268
F. +62 274 487147

Disclaimer:

Information, opinions and recommendations contained in this document are presented by PT Reliance Securities Tbk. from sources that are considered reliable and dependable. This document is not an offer, invitation or any kind of representations to decide to buy or sell stock. Investment decisions taken based on this document is not the responsibility of PT Reliance Securities Tbk. PT Reliance Securities Tbk. reserves the right to change the contents of this document at any time without prior notice.