

IHSG



5391.22
-17.04
-0.32%

Vol (Mn): 10,857
Val (Bn): 6,937

LQ45



894.12
-4.00
-0.45%

Sector Indices	Last	Change	Change %
Agriculture	1838.09	(13.17)	(0.72)
Basic Industry	562.32	(0.41)	(0.07)
Consumer	2393.67	(21.04)	(0.88)
Finance	829.98	0.22	0.03
Infrastructure	1060.16	4.53	0.43
Manufacture	1414.46	(9.85)	(0.70)
Mining	1429.80	(0.74)	(0.05)
Misc Industry	1416.64	(10.52)	(0.74)
Property	507.95	(2.98)	(0.59)
Trade	857.44	(4.76)	(0.56)

Source: relitrade next G

Most Active	Last	Change %	Freq
SRIL	398	3.6	31,242
BUMI	320	9.6	15,160
DEWA	76	16.9	9,313
TRAM	108	0.9	7,848
TMPI	82	(9.9)	7,825

Most Volume	Last	Change %	M share
MYRX	124	(0.8)	17,710
SRIL	398	3.6	16,443
DEWA	76	16.9	15,657
BUMI	320	9.6	10,640
BRMS	104	18.2	9,070

Most Value	Last	Change %	Rp Bil
SRIL	398	3.6	660.44
TRAM	3,850	0.5	354.99
BUMI	320	9.6	326.72
BBCA	15,475	(0.2)	273.74
LPPF	13,100	1.4	227.47

Source: relitrade next G

IHSG Technical Review



R3	5850
R2	5700
R1	5540
Last	5391.22
S1	5400
S2	5280
S3	5175

Comment:
 Pulled back upper Bollinger bands and false break the resistance level.

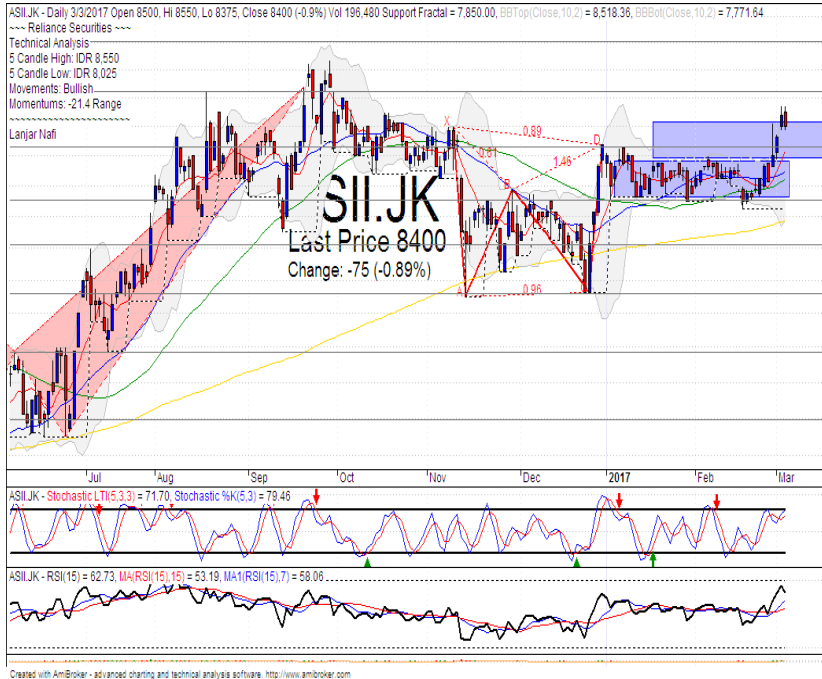
Stochastic, bearish movement after dead-cross at overbought oscillator.

RSI consolidations at middle oscillator.

Long term bullish trend movement.

Stop-loss level if broke the support level at 5380. Downside potential until 5304 (MA50 support level).

ASII



R3	9500
R2	9000
R1	8650
Last	8400
S1	8250
S2	7900
S3	7625

SELL

Comment:
 Reached the target level of rectangle pattern. Tweezers top candlestick pattern. Reversal signal.

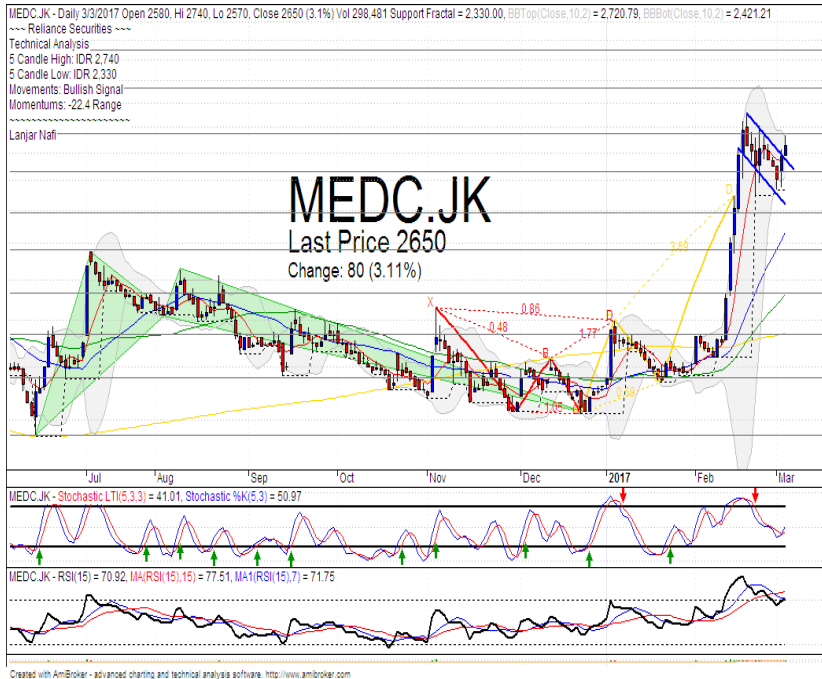
Stochastic, dead-cross indications at overbought oscillator.

RSI bearish reversal momentum at near overbought oscillator.

Short term bullish trend movement.

Stop-loss level if broke the bullish trend support level at 8225. Downside potential until 7775 (MA200 support level).

MEDC



R3	3530
R2	3140
R1	2740
Last	2650
S1	2460
S2	2180
S3	1860

SEPCULATIVE BUY

Comment:
 Flag pattern formations. Reversal signal. Moderate trading volume.

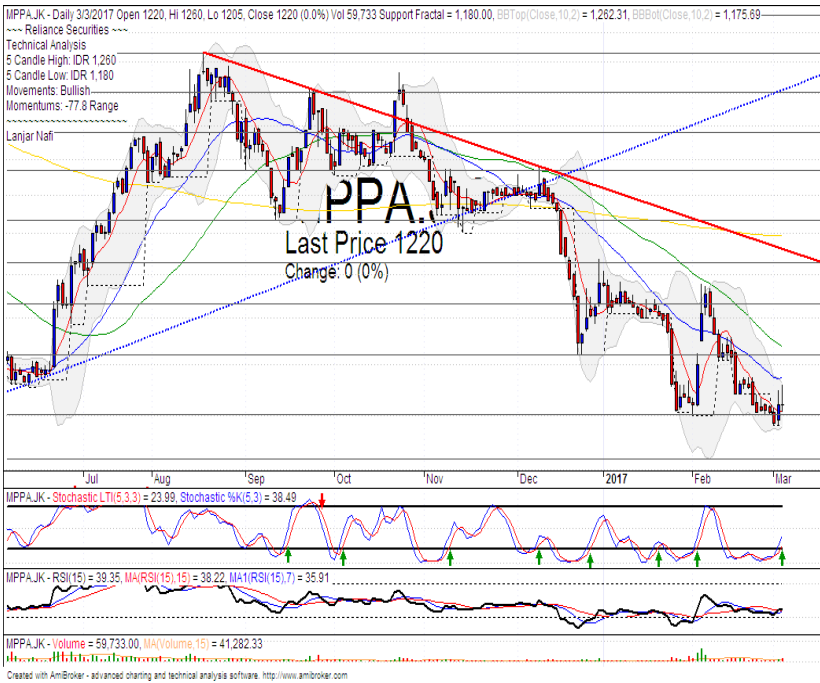
Stochastic Golden-cross at near oversold oscillator. Broad upside potential.

RSI bullish consolidations momentum at near overbought oscillator.

Short term bullish trend movement.

Upside target to flag pattern target level at 3400. Stop-loss level at 2430 if broke support and failed confirmations pattern.

MPPA



R3	1530
R2	1430
R1	1320
Last	1220
S1	1200
S2	1120
S3	1050

Comment:

Tweezers bottom candlestick pattern confirmations. Huge trading volume. Reversal signal.

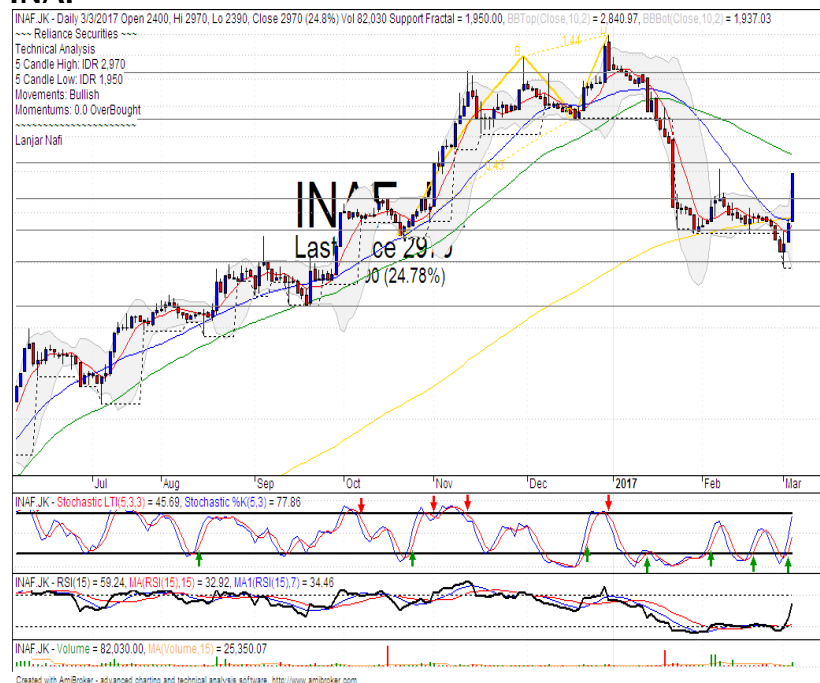
Stochastic bullish movement at oversold oscillator after golden-cross appeared.

RSI bullish reversal momentum at oversold oscillator.

Long term bearish trend movement.

Upside target to MA50 resistance level at 1345. Stop-loss level at 1180 if Broke the support level.

INAF



R3	4650
R2	3775
R1	3110
Last	2970
S1	2300
S2	1990
S3	1660
HOLD	

Comment:

Reached the target level and MA50 resistance level. Waiting for reversal signal.

Stochastic Bullish movement at near overbought.

RSI Bullish momentum after consolidations at oversold oscillator.

Short term bearish trend movement.

Upside target to MA50 at 3250. Stop-loss level if broke the support level 2220. Downside potential if reversal signal appeared at 2450.

Stocks	S2	S1	Closing Price	R1	R2	Technical Notes	Rec	Stop Loss	Rec Buy Prc	Target Price
Plantation										
AALI	14,000	14,900	15,275	15,850	16,700	Consolidations	W	14,800		
LSIP	1,400	1,475	1,495	1,545	1,630	Consolidations	W	1,470		
Mining										
INCO	2,300	2,500	2,520	2,670	2,870	Consolidations	TB	2,450		2,670
Consumer										
UNVR	39,800	41,000	41,975	42,500	44,000	Oversold	W	41,000		
INDF	7,250	7,900	8,050	8,500	9,125	Sideways	W	7,850		
KLBF	1,420	1,485	1,485	1,540	1,600	Bearish momentum	PS	1,480		
Trading										
ACES	675	710	750	755	810	Bearish momentum	PS	750		
AKRA	6,100	6,100	6,200	6,600	6,925	Oversold	W	6,000		
UNTR	22,500	24,000	25,100	25,325	26,750	Consolidations	PS	24,500		
Property & Construction										
LPCK	4,580	4,600	4,620	4,820	5,125	2 star in the south	TB	4,580		4,800
WIKA	2,200	2,400	2,480	2,600	2,800	Sideways	PS	2,480		
BSDE	1,630	1,720	1,765	1,830	1,935	Bearish momentum	W	1,700		
WSKT	2,260	2,410	2,410	2,600	2,800	Oversold	TB	2,400		2,600
ADHI	1,850	1,950	2,190	2,200	2,300	Bullish momentum	B	2,100	2,180	2,300
Basic Industry & Chemical										
SMGR	8,725	9,350	9,425	9,900	10,500	Bearish momentum	PS	9,100		
CPIN	3,000	3,210	3,220	3,400	3,580	Consolidations	TB	3,200		3,400
MAIN	1,050	1,180	1,240	1,300	1,400	Oversold	W	1,200		
INTP	14,600	14,600	15,500	15,500	16,350	Consolidations	W	15,000		
Miscellaneous										
SRIL	380	396	398	400	450	Northern star	S	392		
ASII	7,850	8,250	8,400	8,650	9,000	Bearish engulfing	PS	8,200		
Finance										
BBTN	1,980	2,100	2,110	2,200	2,360	Oversold	TB	2,080		2,250
BMRI	10,750	11,000	11,350	11,450	11,800	Consolidations	W	11,000		
BTPN	2,340	2,550	2,700	2,770	3,000	Bearish momentum	PS	2,600		
BJBR	2,140	2,210	2,300	2,470	2,760	Sideways	TB	2,200		2,570
BBRI	11,100	11,725	11,850	12,300	13,000	Consolidations	W	11,700		
Infrastructure										
TLKM	3,510	3,710	3,850	3,950	4,200	Sideways	W	3,700		
PGAS	2,360	2,560	2,830	2,800	3,050	Consolidations	W	2,550		

Source : Reliance Securities

Analyst Conclusions:

The index rebounded at support level but having limited momentum.

Legend :

- B: BUY (allocate till 100% of the weighted capital to accumulate, higher than 50% upside probability)
- SB: SPECULATIVE BUY (allocate 25%-50% of the weighted capital to accumulate, 25%-50% upside probability)
- W: WAIT (wait for proper entry level, do the stop-loss if necessary)
- H: HOLD (hold the portfolio position, aim for the best price to distribute)
- PS: PARTIAL SELL (distribute 25%-50% part of the portfolio, 25%-50% downside probability)
- S: SELL (distribute till 100% of the portfolio, higher than 50% downside probability)
- TB: TRADING BUY (short term or intraday trading within a tight trading range. Highly speculative).

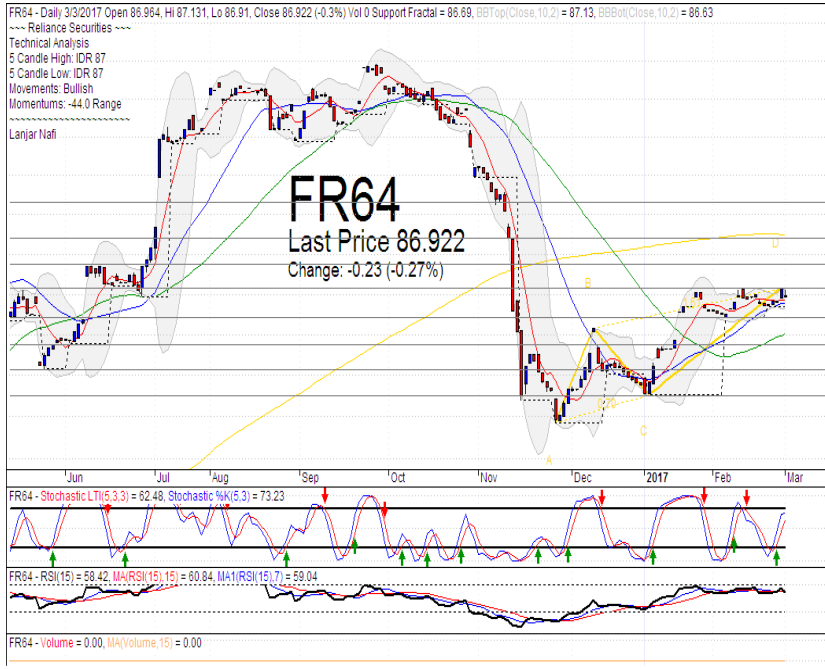
Ticker	Resistance Fractal	Price 3/3/2017	Support Fractal	Weekly High	Weekly Low	Indicator			Moving Average			
						Stochastic	RSI	B. Band	25 Days	50 Days	200 Days	
AALJ.K	15,850	15,275	14,675	15,850	15,225	Neutral	Bearish	Neutral	Middle Bands	Under	Under	Under
ACES.JK	795	750	750	780	755	Neutral	Bearish	Neutral	Lower Bands	Under	Under	Under
ADHI.JK	2,350	2,190	2,080	2,230	2,160	Neutral	Bullish	Neutral	Middle Bands	Upper	Upper	Under
ADRO.JK	1,755	1,685	1,665	1,705	1,690	Neutral	Bearish	Neutral	Middle Bands	Under	Under	Upper
AISA.JK	2,070	2,190	1,950	2,200	2,010	Neutral	Bullish	Neutral	Upper Bands	Upper	Upper	Upper
AKRA.JK	6,850	6,200	6,100	6,725	6,300	Oversold	Bearish	Neutral	Middle Bands	Under	Under	Under
ANTM.JK	810	755	740	785	765	Neutral	Bullish	Neutral	Middle Bands	Under	Under	Under
APLN.JK	234	224	222	234	228	Oversold	Bearish	Neutral	Middle Bands	Under	Upper	Under
ASII.JK	8,150	8,400	7,850	8,550	8,150	Neutral	Bullish	Neutral	Upper Bands	Upper	Upper	Upper
ASRI.JK	398	366	372	382	370	Oversold	Bullish	Neutral	Middle Bands	Under	Under	Under
BBCA.JK	15,600	15,475	15,400	15,675	15,525	Neutral	Bearish	Neutral	Middle Bands	Upper	Upper	Upper
BBKP.JK	630	615	605	620	615	Overbought	Bullish	Neutral	Middle Bands	Upper	Under	Under
BBNI.JK	6,375	6,350	6,125	6,350	6,250	Neutral	Bullish	Neutral	Upper Bands	Upper	Upper	Upper
BBRI.JK	12,025	11,850	11,850	12,025	11,950	Neutral	Bearish	Neutral	Middle Bands	Under	Upper	Upper
BBTN.JK	1,835	2,110	2,050	2,200	2,140	Neutral	Bullish	Neutral	Middle Bands	Upper	Upper	Upper
BDMN.JK	5,050	4,700	4,750	5,050	4,950	Neutral	Bearish	Neutral	Middle Bands	Upper	Upper	Upper
BHIT.JK	135	131	126	135	133	Neutral	Bearish	Neutral	Middle Bands	Under	Under	Under
BJBR.JK	2,390	2,300	2,210	2,330	2,300	Neutral	Bullish	Neutral	Lower Bands	Under	Under	Upper
BJTM.JK	575	565	540	575	570	Neutral	Bearish	Neutral	Middle Bands	Under	Under	Upper
BKSL.JK	99	95	95	99	96	Oversold	Bearish	Neutral	Middle Bands	Under	Upper	Upper
BMRI.JK	11,075	11,350	11,100	11,450	11,225	Neutral	Bullish	Neutral	Middle Bands	Upper	Upper	Upper
BMTR.JK	630	555	505	560	525	Neutral	Bullish	Neutral	Middle Bands	Under	Under	Under
BSDE.JK	1,920	1,765	1,825	1,900	1,795	Oversold	Bearish	Neutral	Lower Bands	Under	Under	Under
BTPN.JK	2,840	2,700	2,630	2,840	2,690	Neutral	Bearish	Neutral	Middle Bands	Upper	Upper	Upper
BWPT.JK	386	366	364	386	372	Neutral	Bearish	Neutral	Middle Bands	Upper	Upper	Upper
CMNP.JK	1,490	1,475	1,465	1,490	1,475	Neutral	Bullish	Neutral	Middle Bands	Under	Under	Under
CPIN.JK	3,300	3,220	3,020	3,300	3,140	Neutral	Bullish	Neutral	Middle Bands	Under	Upper	Under
CSAP.JK	515	494	498	500	498	Neutral	Bearish	Neutral	Lower Bands	Under	Under	Upper
CTRA.JK	1,405	1,285	1,370	1,380	1,335	Neutral	Bearish	Neutral	Lower Bands	Under	Under	Under
DILD.JK	510	454	468	472	454	Oversold	Bearish	Neutral	Middle Bands	Under	Under	Under
EXCL.JK	3,090	2,890	2,870	3,170	2,920	Oversold	Bearish	Neutral	Middle Bands	Under	Upper	Under
GGRM.JK	62,850	64,475	60,050	66,000	65,075	Neutral	Bearish	Neutral	Middle Bands	Upper	Upper	Under
GIAA.JK	356	338	338	356	342	Neutral	Bearish	Neutral	Middle Bands	Under	Under	Under
GJTL.JK	1,295	1,165	1,005	1,295	1,255	Neutral	Bearish	Neutral	Middle Bands	Upper	Upper	Under
HEXA.JK	3,410	4,060	3,300	4,250	3,490	Overbought	Bearish	Overbought	Upper Bands	Upper	Upper	Upper
HRUM.JK	2,280	2,330	2,130	2,340	2,190	Neutral	Bullish	Neutral	Upper Bands	Upper	Upper	Upper
ICBP.JK	8,475	8,225	8,200	8,375	8,325	Neutral	Bearish	Neutral	Middle Bands	Under	Under	Under
IMAS.JK	1,340	1,285	1,255	1,300	1,285	Neutral	Bullish	Neutral	Middle Bands	Under	Under	Under
INCO.JK	2,600	2,520	2,480	2,600	2,560	Neutral	Bullish	Neutral	Middle Bands	Under	Under	Under
INDF.JK	8,175	8,050	7,950	8,175	8,100	Neutral	Bearish	Neutral	Middle Bands	Upper	Upper	Upper
INDY.JK	770	725	720	770	740	Oversold	Bearish	Neutral	Middle Bands	Under	Under	Upper
INTA.JK	336	342	326	346	338	Neutral	Bearish	Neutral	Upper Bands	Upper	Upper	Upper
INTP.JK	15,800	15,500	15,150	15,800	15,550	Neutral	Bullish	Neutral	Middle Bands	Under	Upper	Under
ITMG.JK	15,750	17,525	14,950	18,150	17,300	Overbought	Bearish	Neutral	Middle Bands	Upper	Upper	Upper
JFJA.JK	1,950	1,710	1,620	1,805	1,730	Neutral	Bullish	Neutral	Middle Bands	Under	Upper	Upper
JSMR.JK	4,280	4,680	4,660	4,900	4,770	Neutral	Bearish	Neutral	Middle Bands	Upper	Upper	Under
KUJA.JK	312	314	294	318	308	Neutral	Bullish	Overbought	Upper Bands	Upper	Upper	Upper
KLBF.JK	1,550	1,485	1,445	1,550	1,485	Neutral	Bearish	Neutral	Middle Bands	Upper	Under	Under
KRAS.JK	745	710	660	740	720	Neutral	Bullish	Neutral	Middle Bands	Under	Under	Under
LPCK.JK	5,425	4,620	4,770	4,750	4,650	Oversold	Bearish	Oversold	Middle Bands	Under	Under	Under
LPKR.JK	785	710	750	750	730	Oversold	Bearish	Neutral	Lower Bands	Under	Under	Under
LPFF.JK	15,050	13,100	11,175	14,300	13,025	Neutral	Bullish	Neutral	Middle Bands	Under	Under	Under
LSIP.JK	1,560	1,495	1,470	1,560	1,525	Neutral	Bullish	Neutral	Middle Bands	Under	Under	Under
MAIN.JK	1,275	1,240	1,210	1,270	1,245	Neutral	Bullish	Neutral	Middle Bands	Upper	Upper	Under
MAPI.JK	5,550	5,225	5,275	5,550	5,400	Oversold	Bearish	Neutral	Middle Bands	Under	Under	Upper
MASA.JK	248	218	196	220	210	Neutral	Bullish	Neutral	Middle Bands	Under	Under	Under
MNCN.JK	1,690	1,660	1,495	1,690	1,660	Overbought	Bearish	Neutral	Middle Bands	Upper	Under	Under
MPPA.JK	1,480	1,220	1,180	1,260	1,215	Neutral	Bullish	Neutral	Middle Bands	Under	Under	Under
MTLA.JK	274	330	300	334	314	Overbought	Bearish	Overbought	Upper Bands	Upper	Upper	Upper
MYOR.JK	2,110	2,050	1,800	2,110	1,990	Overbought	Bearish	Overbought	Middle Bands	Upper	Upper	Upper
PGAS.JK	2,890	2,830	2,750	2,870	2,820	Neutral	Bearish	Neutral	Middle Bands	Upper	Upper	Upper
PTBA.JK	11,375	10,975	11,025	11,300	11,200	Neutral	Bullish	Neutral	Middle Bands	Under	Under	Upper
RALS.JK	1,320	1,185	1,270	1,320	1,245	Neutral	Bearish	Neutral	Lower Bands	Under	Under	Upper
ROTI.JK	1,600	1,555	1,535	1,600	1,560	Neutral	Bearish	Neutral	Middle Bands	Under	Under	Under
SCMA.JK	3,180	2,740	2,780	3,090	2,860	Neutral	Bearish	Neutral	Middle Bands	Under	Under	Under
SCRO.JK	2,080	2,040	2,010	2,080	2,050	Neutral	Bearish	Neutral	Middle Bands	Upper	Upper	Upper
SIMP.JK	525	550	505	585	520	Neutral	Bullish	Neutral	Middle Bands	Upper	Upper	Upper
SMCB.JK	920	915	865	920	910	Neutral	Bullish	Neutral	Middle Bands	Upper	Upper	Under
SMGR.JK	9,675	9,425	9,075	9,675	9,500	Neutral	Bearish	Neutral	Middle Bands	Upper	Upper	Under
SMRA.JK	1,440	1,380	1,345	1,415	1,380	Neutral	Bullish	Neutral	Middle Bands	Upper	Upper	Under
SRIL.JK	298	398	272	418	348	Overbought	Bullish	Overbought	Upper Bands	Upper	Upper	Upper
SSIA.JK	570	550	540	570	555	Neutral	Bullish	Neutral	Middle Bands	Under	Upper	Under
SSMS.JK	1,665	1,400	1,455	1,550	1,475	Neutral	Bearish	Oversold	Lower Bands	Under	Under	Under
TLKM.JK	3,900	3,850	3,830	3,900	3,870	Neutral	Bearish	Neutral	Middle Bands	Under	Under	Under
TOTL.JK	810	820	800	840	825	Neutral	Bearish	Neutral	Middle Bands	Upper	Upper	Upper
UNTR.JK	25,525	25,100	23,750	25,475	24,950	Neutral	Bullish	Neutral	Middle Bands	Upper	Upper	Upper
UNVR.JK	42,825	41,975	42,075	42,825	42,150	Neutral	Bullish	Neutral	Lower Bands	Under	Under	Under

Source : Reliance Research

Legend :

- Movement: Bullish and Bearish (Indicator Stochastic)
- Momentum: Oversold, Overbought and Neutral (Indicator RSI)
- Resistance Fractal: Strong Resistance
- Support Fractal: Strong Support
- Green: Good Conditions
- Red: Poor Conditions

FR 64



R3	88.41
R2	87.74
R1	87.15
Last	86.92
S1	85.80
S2	85.13
S3	84.51

BUY

Comment:

Bullish momentum after rebounded at MA25 support level.

Stochastic bullish movement after golden-cross at oversold oscillator.

RSI consolidations momentum at near overbought.

Medium term bullish trend movement.

Upside target to 87.74 (Resistance target level). Stop-loss level if broke the MA25 support level at 86.70.

Indonesian Technical Bond

Ticker	Resistance	Price	Support	Weekly	Weekly	Indicator			Moving Average			
	Fractal	3/3/2017	Fractal	High	Low	Stochastic	RSI	B. Band	25 Days	50 Days	200 Days	
FR34	120.37	120.31	120.06	120.31	120.11	Neutral	Bullish	Neutral	Upper Bands	Upper	Upper	Under
FR43	112.57	112.55	112.33	112.57	112.47	Neutral	Bearish	Neutral	Upper Bands	Upper	Upper	Under
FR47	115.82	116.14	115.44	116.14	115.53	Neutral	Bullish	Neutral	Upper Bands	Upper	Upper	Under
FR53	103.91	103.91	103.54	103.91	103.62	Neutral	Bearish	Neutral	Upper Bands	Upper	Upper	Under
FR54	112.47	112.57	111.93	112.57	112.17	Neutral	Bullish	Neutral	Upper Bands	Upper	Upper	Under
FR56	106.37	105.81	105.76	106.37	105.81	Neutral	Bearish	Neutral	Upper Bands	Upper	Upper	Under
FR58	101.83	101.62	101.46	102.00	101.74	Neutral	Bearish	Neutral	Upper Bands	Upper	Upper	Under
FR59	96.63	96.63	96.01	96.63	96.39	Neutral	Bullish	Neutral	Upper Bands	Upper	Upper	Under
FR64	87.00	86.92	86.69	87.15	86.75	Neutral	Bullish	Neutral	Upper Bands	Upper	Upper	Under
FR66	98.71	98.61	98.56	98.64	98.63	Neutral	Bullish	Neutral	Upper Bands	Under	Upper	Upper
FR68	103.05	103.05	102.46	103.05	102.59	Neutral	Bearish	Neutral	Upper Bands	Upper	Upper	Under
FR69	102.02	101.99	101.79	102.10	101.89	Neutral	Bearish	Neutral	Upper Bands	Upper	Upper	Under
FR70	104.88	104.64	104.11	104.77	104.62	Neutral	Bearish	Neutral	Upper Bands	Upper	Upper	Under
FR71	107.94	107.93	107.52	108.21	107.90	Overbought	Bearish	Neutral	Upper Bands	Upper	Upper	Under
FR72	102.09	102.09	101.15	102.09	101.61	Neutral	Bullish	Neutral	Upper Bands	Upper	Under	Under
FR73	107.08	106.75	106.19	107.47	106.57	Overbought	Bearish	Neutral	Upper Bands	Upper	Upper	Under
ORI13	98.21	98.44	98.07	98.44	98.15	Overbought	Bullish	Neutral	Middle Bands	Upper	Upper	Upper
ORI12	103.62	103.62	103.42	103.62	103.46	Neutral	Bearish	Neutral	Upper Bands	Upper	Upper	Under
SR06	100.28	100.00	100.11	100.32	100.03	Neutral	Bullish	Neutral	Upper Bands	Under	Under	Under
SR08	102.64	102.64	102.38	102.64	102.47	Neutral	Bullish	Neutral	Upper Bands	Upper	Under	Under

Analyst: Lanjar Nafi, lanjar@reliance-securities.com

Source: Reliance Research

Legend :

- Movement: Bullish and Bearish (Indicator Stochastic)
- Momentum: Oversold, Overbought and Neutral (Indicator RSI)
- Resistance Fractal: Strong Resistance
- Support Fractal: Strong Support
- Green: Good Conditions
- Red: Poor Conditions

HEAD OFFICE

Reliance Building

Jl. Pluit Sakti Raya No. 27AB,
Pluit
Jakarta 14450
T. +62 21 661 7768
F. +62 21 661 9884

RESEARCH DIVISION

Robertus Yanuar Hardy

robertus@reliance-securities.com

Rio Adrianus

rio.adrianus@reliance-securities.com

Lanjar Nafi Taulat I

lanjar@reliance-securities.com

Aji Setiawan

aji@reliance-securities.com

Shanti Dwi Jayanti

santi@reliance-securities.com

Senior Analyst

Research Analyst

Technical Research Analyst

Associate Research Analyst

Associate Research Analyst

EQUITY DIVISION

Jakarta- Pluit

Jl. Pluit Sakti Raya No. 27AB,
Pluit
Jakarta 14450
T. +62 21 661 7768
F. +62 21 661 9884

Bandung

Jl.Cisangkuy No.58
Bandung 40115
T. +62 22 721 8200
F. +62 22 721 9255

Surabaya - Gubeng

Jl. Bangka No. 22
Surabaya 60281
T. +62 31 501 1128
F. +62 31 503 3196

Makassar

Jl. Boto Lempangan No. 34 J
Makassar- Sulawesi Selatan
T. +62 411 3632388
F. +62 411 3614634

Jakarta - Sudirman

Menara Batavia Ground Floor
Jl.KH.Mas Mansyur Kav 126
Jakarta 10220
T. +62 21 57905455
F. +62 21 57950728

Tasikmalaya

Ruko Tasik Indah Plaza No.21
Jl. KHZ Mustofa No. 345
Tasikmalaya 46121
T. +62 265 345000
F. +62 265 345003

Surabaya - Diponegoro

Jl. Diponegoro No.26D
Surabaya 60261
T. +62 31 567 0388
F. +62 31 561 0528

Medan

Jl. Teuku Amir Hamzah No.40-O
Medan 20117
T. +62 61 6638592
F. +62 61 6638023

Jakarta - Kebon Jeruk

Plaza Kebon Jeruk
Jl.Raya Perjuangan Blok A/2
Jakarta 11530
T. +62 21 532 4074
F. +62 21 536 2157

Malang

Jl. Guntur No. 19
Malang 65112
T. +62 341 347 611
F. +62 341 347 615

Bali - Denpasar

Dewata Square Blok A3
Jl. Letda Tantular Renon
Denpasar 802361
T. +62 361 225099
F. +62 361 245099

Tangerang

Jl. Pahlawan Seribu Ruko BSD
Sektor 7 Blok RK kav. 9
Tangerang 15310
T. +62 21 5387495
F. +62 21 5387494

Pekanbaru

Jl. Jendral Sudirman No.73
Pekanbaru-Riau
T. +62 761 848414
F. +62 761 849456

Pontianak

Jl. MT Haryono No. 6
Pontianak 78121
T. +62 561 575674
F. +62 561 575670

Jakarta - Centro

Ruko Centro Residence Kav. 4-5
Tower C Lt. 1 No. 26-29
Jl. Macan, Daan Mogot
Jakarta 14450
T. +62 21 56945227
F. +62 21 56945226

Solo

Jl. Slamet Riyadi 330^a
Solo 57145
T. +62 271 736599
F. +62 271 733478

Balikpapan

Ruko Bukit Damai Indah
Blok I, No. 3, Rt.34
Jl. MT. Haryono, Gunung
Bahagia, Balikpapan Selatan
76114
T. +62 542 746313
F. +62 542 746317

IDX CORNER & INVESTMENT GALLERY

President University

Resto Plaza 1F - Jababeka
Education Park
Jl. Ki Hajar Dewantara Raya
Cikarang - Bekasi 17550
T. +62 21 89106030

Universitas Siliwangi Tasikmalaya

Jl. Siliwangi No. 24
Tasikmalaya 46151
T. +62 265 323685
F. +62 265 323534

Politeknik Kediri

Jl. Mayor Bismo No. 27
Kediri 64121
T. +62 354 683128
F. +62 354 683128

Universitas Muhammadiyah Sidoarjo

Jl. Majapahit 666 B
Sidoarjo, Jawa Timur
T. +62 31 8945444
F. +62 31 8949333

Universitas Tanjungpura Pontianak

Jl. Jendral Ahmad Yani
Pontianak 78124
T. +62 561 743465
F. +62 561 766840

Universitas Pesantren Tinggi Darul Ulum

Kompleks Pp Darul Ulu,
Peterongan
Jombang, Jawa Timur 60281
T. +62 321 873655
F. +62 321 875771

STIE "AUB" Surakarta

Jl. Mr. Sartono 97, Cengklik
Nusukan, Surakarta 57135
T. +62 271 854803
F. +62 271 853084

Universitas Surabaya

Jl. Raya Kalirungkut
Surabaya 60293
T. +62 31 298 1203
F. +62 31 298 1204

Universitas Muhammadiyah Gresik

Jl. Sumatra 101 GKB
Gresik 61121
T. +62 31 395 1414
F. +62 31 395 2585

Universitas Negeri Malang

Jl. Surabaya No. 6
Malang 65145
T. +62 341 585914
F. +62 341 55288

Universitas Muhammadiyah Malang

Jl. Raya Tlogomas 246
Malang 65144
T. +62 341 464318-9
F. +62 341 460782

FSEI IAIN Antasari

Jl. Ahmad Yani Km. 4,5
Banjarmasin
T. + 62 511 3265783

STIE Malangkececwara

Jl. Terusan Candi Kalasan
Malang 65142
T. +62 341 491813
F. +62 341 495619

STIESIA Surabaya

Jl. Menur Pumpungan 30
Surabaya
T. +62 31 5947505
F. +62 31 5932218

Universitas 17 Agustus 1945 Banyuwangi

Jl. Adi Sucipto 26
Banyuwangi, Jawa Timur
T. +62 333 419613
F. +62 333 419163

STIE Tri Bhakti

Jl. Teuku Umar No. 24
Cut Meutia Setiakawan,
Bekasi
T. +62 21 82429400,
82429500
F. +62 271 726156

Universitas Islam Kalimantan

Jl. Adiyaksa No. 2, Kayu
Tangi, Banjarmasin
T. + 62 511 3303871
F. + 62 511 3303871

STIKOM Bali

Jalan Puputan No. 86, Renon,
Denpasar
T. +62361 244445
F. +62361 264773

Universitas Muhammadiyah Pontianak

Fakultas Ekonomi UM
Pontianak
Jl. Ahmad Yani, No. 111,
Pontianak 78124
T. +62561 743465
F. +62561 766840

Universitas Negeri Makassar

Fakultas Ekonomi Gedung BT
Lt.2
Jl. A.P. Pettarani, Kampus
UNM, Gunungsari Baru
Makassar 90222
T. +62 411 889464 / 881244
F. +62 411 887604

STIE AAS Surakarta

Jl. Slamet Riyadi No. 361,
Kartasura, Surakarta
T. +62 271 726156
F. +62 271 726156

UPN "Veteran" Yogyakarta

Jl. Babarsari 2, Tambak Bayan
Yogyakarta
T. +62 274 485268
F. +62 274 487147

Disclaimer:

Information, opinions and recommendations contained in this document are presented by PT Reliance Securities Tbk. from sources that are considered reliable and dependable. This document is not an offer, invitation or any kind of representations to decide to buy or sell stock. Investment decisions taken based on this document is not the responsibility of PT Reliance Securities Tbk. PT Reliance Securities Tbk. reserves the right to change the contents of this document at any time without prior notice.