

IHSG



5409.82
18.60
0.35%

Vol (Mn): 10,371
Val (Bn): 7,606

LQ45



898.38
4.26
0.48%

Sector Indices	Last	Change	Change %
Agriculture	1821.60	(16.49)	(0.91)
Basic Industry	562.64	0.32	0.06
Consumer	2392.66	(1.01)	(0.04)
Finance	830.01	0.03	0.00
Infrastructure	1069.51	9.35	0.87
Manufacture	1419.26	4.80	0.34
Mining	1427.53	(2.27)	(0.16)
Misc Industry	1443.12	26.48	1.83
Property	510.10	2.15	0.42
Trade	866.19	8.75	1.01

Source: relitrade next G

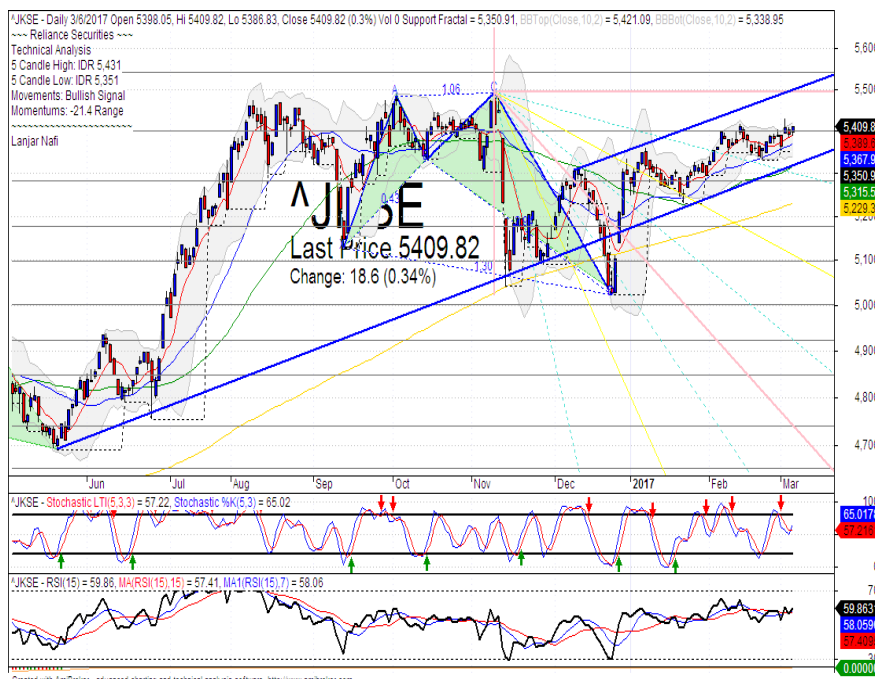
Most Active	Last	Change %	Freq
SRIL	496	24.6	17,056
AGRO	925	(12.7)	15,778
TRAM	105	(2.8)	8,884
BUMI	324	1.3	8,636
ADHI	2,380	8.7	8,080

Most Volume	Last	Change %	M share
MYRX	123	(0.8)	18,075
SRIL	496	24.6	15,970
ELTY	50	0.0	11,055
DEWA	77	1.3	9,605
BRMS	102	(1.9)	6,355

Most Value	Last	Change %	Rp Bil
SRIL	496	24.6	694.97
ASII	8,550	1.8	400.36
TLKM	3,920	1.8	385.99
ADHI	2,380	8.7	252.64
AGRO	925	(12.7)	235.49

Source: relitrade next G

IHSG Technical Review



R3	5850
R2	5700
R1	5540
Last	5409.82
S1	5400
S2	5280
S3	5175

Comment:
 Pulled back upper Bollinger bands and false break the resistance level.

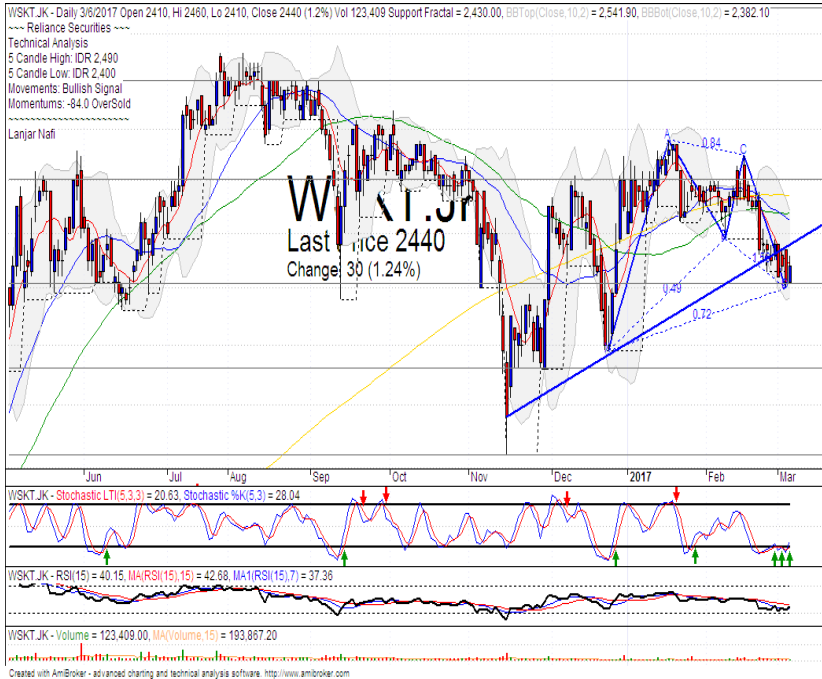
Stochastic, bearish movement after dead-cross at overbought oscillator.

RSI consolidations at middle oscillator.

Long term bullish trend movement.

Stop-loss level if broke the support level at 5380. Downside potential until 5304 (MA50 support level).

WSKT



R3	2950
R2	2800
R1	2600
Last	2440
S1	2410
S2	2260
S3	2120

TRADING BUY

Comment:

Bullish harami candlestick pattern. Reversal signal. Moderate trading volume.

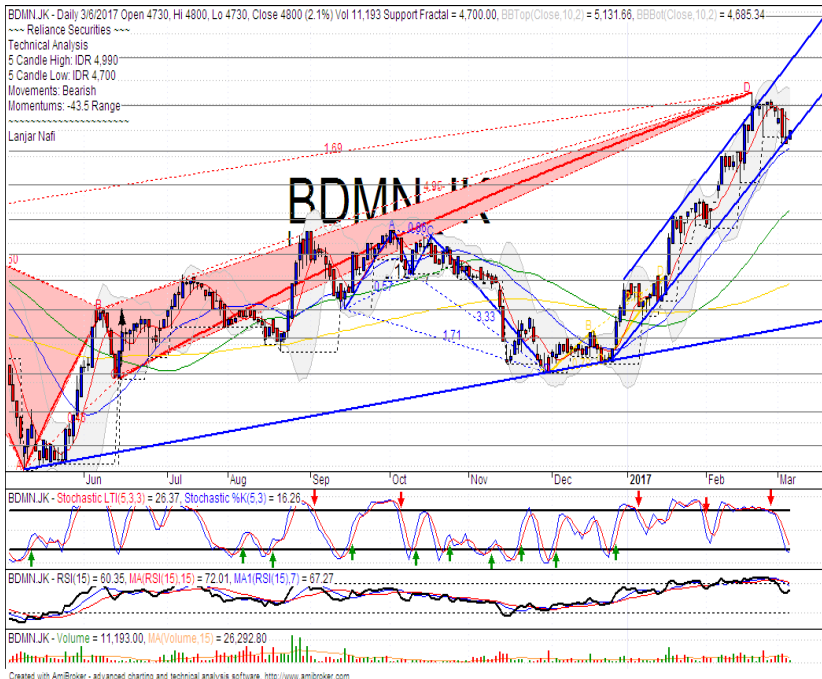
Stochastic, golden-cross at oversold oscillator. Broad upside potential.

RSI bullish reversal momentum at oversold oscillator.

Medium term bullish trend movement.

Upside target to MA200 at 2570. Stop-loss level if broke the support level at 2390.

BDMN



R3	5750
R2	5400
R1	5000
Last	4800
S1	4630
S2	4400
S3	4160

SPECULATIVE BUY

Comment:

Whipsaw at bullish trend support level, and rebounded at MA25 support level.

Stochastic Golden-cross at oversold oscillator. Broad upside potential.

RSI bullish consolidations momentum at near overbought oscillator.

Long term and Short term bullish trend movement.

Upside target to upper Bollinger bands target level at 5125. Stop-loss level at 4650 if broke support and failed confirmations pattern.

BSDE



R3	2030
R2	1935
R1	1825
Last	1765
S1	1720
S2	1625
S3	1550

TRADING BUY

Comment:

Matching low candlestick pattern. Reversal signal. Moderate trading volume.

Stochastic golden-cross at oversold oscillator. Broad upside potential.

RSI bullish reversal momentum at oversold oscillator.

Long term bearish trend movement.

Upside target to MA200 resistance level at 1970. Stop-loss level at 1700 if Broke the support level.

KLBF



R3	1650
R2	1600
R1	1540
Last	1525
S1	1485
S2	1420
S3	1370

SPECULATIVE BUY

Comment:

Whipsaw at bullish trend support level. Reversal signal. Huge trading volume.

Stochastic crossing at near oversold oscillator.

RSI Bullish momentum after consolidations at oversold oscillator.

Medium term bullish trend movement.

Upside target to MA200 at 1575. Stop-loss level if broke the support level 1480.

Stocks	S2	S1	Closing Price	R1	R2	Technical Notes	Rec	Stop Loss	Rec Buy Prc	Target Price
Plantation										
AALI	14,000	14,900	15,300	15,850	16,700	Consolidations	W	14,800		
LSIP	1,400	1,475	1,510	1,545	1,630	Consolidations	W	1,470		
Mining										
INCO	2,300	2,500	2,550	2,670	2,870	Consolidations	TB	2,450		2,670
Consumer										
UNVR	39,800	41,000	42,375	42,500	44,000	Stoch golden-cross	TB	41,000		43,100
INDF	7,250	7,900	8,075	8,500	9,125	Sideways	W	7,850		
KLBF	1,420	1,485	1,525	1,540	1,600	Bullish momentum	SB	1,480	1,500	1,575
Trading										
ACES	675	710	755	755	810	Oversold	W	750		
AKRA	6,100	6,100	6,325	6,350	6,600	Oversold	TB	6,000		6,480
UNTR	24,000	25,325	26,200	26,750	28,175	Overbought	H	25,300		26,750
Property & Construction										
LPCK	4,580	4,600	4,610	4,820	5,125	Oversold	TB	4,580		4,800
WIKA	2,200	2,400	2,490	2,600	2,800	Sideways	W	2,390		
BSDE	1,630	1,720	1,765	1,830	1,935	Matching low	TB	1,700		1,860
WSKT	2,260	2,410	2,440	2,600	2,800	Bullish harami	SB	2,400	2,430	2,600
ADHI	2,200	2,300	2,380	2,410	2,540	Reached at overbought	H	2,350		2,410
Basic Industry & Chemical										
SMGR	8,725	9,350	9,500	9,900	10,500	Consolidations	TB	9,300		9,900
CPIN	2,850	3,000	3,130	3,210	3,400	Consolidations	W	3,100		
MAIN	1,050	1,180	1,225	1,300	1,400	Oversold	W	1,200		
INTP	14,600	14,600	15,475	15,500	16,350	Consolidations	W	15,000		
Miscellaneous										
SRIL	400	450	496	496	555	Overbought	H	480		500
ASII	7,850	8,250	8,550	8,650	9,000	Consolidations	PS	8,200		
Finance										
BBTN	1,850	1,980	2,070	2,100	2,200	Break out support level	W	1,970		
BMRI	10,750	11,000	11,300	11,450	11,800	Consolidations	W	11,000		
BTPN	2,340	2,550	2,750	2,770	3,000	Bearish momentum	PS	2,600		
BJBR	2,140	2,210	2,300	2,470	2,760	Sideways	TB	2,200		2,570
BBRI	11,100	11,725	11,950	12,300	13,000	Sideways	W	11,700		
Infrastructure										
TLKM	3,510	3,710	3,920	3,950	4,200	Sideways	TB	3,700		4,010
PGAS	2,560	2,800	2,830	3,050	3,340	Consolidations	TB	2,790		3,000

Source : Reliance Securities

Analyst Conclusions:

The index rebounded at support level but having limited momentum.

Legend :

- B: BUY (allocate till 100% of the weighted capital to accumulate, higher than 50% upside probability)
- SB: SPECULATIVE BUY (allocate 25%-50% of the weighted capital to accumulate, 25%-50% upside probability)
- W: WAIT (wait for proper entry level, do the stop-loss if necessary)
- H: HOLD (hold the portfolio position, aim for the best price to distribute)
- PS: PARTIAL SELL (distribute 25%-50% part of the portfolio, 25%-50% downside probability)
- S: SELL (distribute till 100% of the portfolio, higher than 50% downside probability)
- TB: TRADING BUY (short term or intraday trading within a tight trading range. Highly speculative).

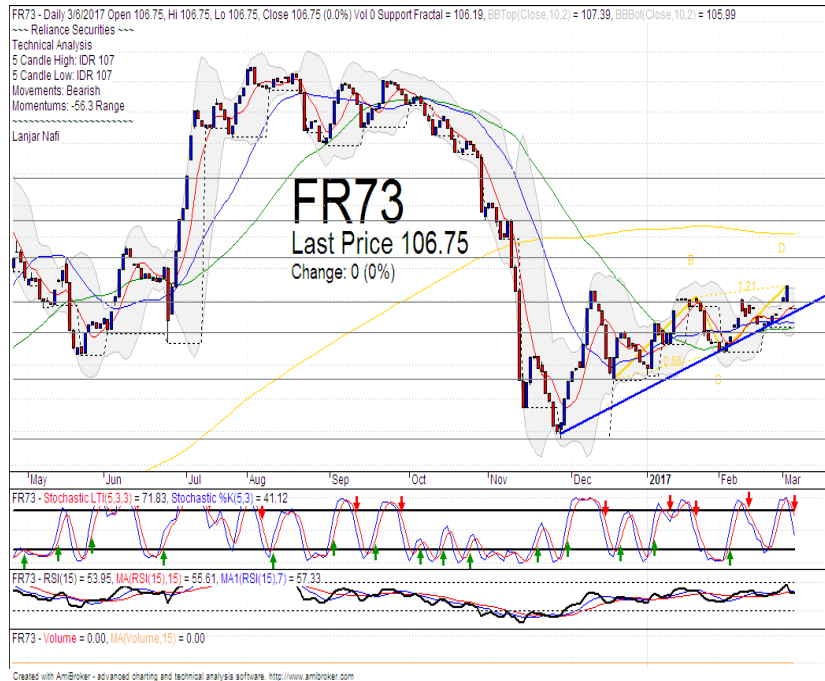
Ticker	Resistance	Price	Support	Weekly	Weekly	Indicator			Moving Average			
	Fractal	3/6/2017	Fractal	High	Low	Stochastic	RSI	B. Band	25 Days	50 Days	200 Days	
AALI.JK	15,850	15,300	14,675	15,850	15,225	Neutral	Bullish	Neutral	Middle Bands	Under	Under	Under
ACES.JK	795	755	750	770	755	Neutral	Bullish	Neutral	Middle Bands	Under	Under	Under
ADHI.JK	2,350	2,380	2,080	2,390	2,160	Neutral	Bullish	Neutral	Upper Bands	Upper	Upper	Under
ADRO.JK	1,755	1,685	1,665	1,705	1,690	Neutral	Bullish	Neutral	Middle Bands	Under	Under	Upper
AISA.JK	2,070	2,130	1,950	2,220	2,010	Neutral	Bullish	Neutral	Middle Bands	Upper	Upper	Upper
AKRA.JK	6,850	6,325	6,100	6,475	6,300	Oversold	Bullish	Neutral	Middle Bands	Under	Under	Under
ANTM.JK	785	760	740	785	765	Neutral	Bullish	Neutral	Middle Bands	Upper	Under	Under
APLN.JK	234	226	222	230	228	Oversold	Bullish	Neutral	Middle Bands	Upper	Upper	Under
ASII.JK	8,150	8,550	7,850	8,550	8,350	Overbought	Bullish	Neutral	Upper Bands	Upper	Upper	Upper
ASRI.JK	398	368	372	378	370	Oversold	Bullish	Neutral	Middle Bands	Under	Under	Under
BBCA.JK	15,675	15,475	15,400	15,675	15,475	Neutral	Bearish	Neutral	Upper Bands	Under	Upper	Upper
BBKP.JK	630	610	605	620	615	Neutral	Bearish	Neutral	Middle Bands	Under	Under	Under
BBNI.JK	6,375	6,300	6,125	6,350	6,250	Neutral	Bullish	Neutral	Middle Bands	Upper	Upper	Upper
BBRI.JK	12,025	11,950	11,850	12,025	11,950	Neutral	Bearish	Neutral	Middle Bands	Upper	Upper	Upper
BBTN.JK	1,835	2,070	2,050	2,200	2,130	Neutral	Bullish	Neutral	Middle Bands	Upper	Upper	Upper
BDMN.JK	5,050	4,800	4,700	4,990	4,800	Neutral	Bearish	Neutral	Middle Bands	Upper	Upper	Upper
BHIT.JK	135	130	126	135	132	Neutral	Bearish	Neutral	Middle Bands	Under	Under	Under
BJBR.JK	2,390	2,300	2,210	2,330	2,300	Neutral	Bearish	Neutral	Lower Bands	Under	Under	Upper
BJTM.JK	575	565	540	575	570	Neutral	Bearish	Neutral	Middle Bands	Under	Under	Upper
BKSL.JK	99	93	95	99	96	Oversold	Bearish	Neutral	Middle Bands	Under	Under	Upper
BMRI.JK	11,450	11,300	11,100	11,450	11,375	Neutral	Bearish	Neutral	Middle Bands	Upper	Upper	Upper
BMTR.JK	630	535	505	560	545	Overbought	Bearish	Neutral	Middle Bands	Under	Under	Under
BSDE.JK	1,920	1,765	1,825	1,855	1,785	Oversold	Bullish	Neutral	Middle Bands	Under	Under	Under
BTPN.JK	2,840	2,750	2,630	2,840	2,760	Neutral	Bearish	Neutral	Middle Bands	Upper	Upper	Upper
BWPT.JK	386	356	364	386	372	Neutral	Bearish	Neutral	Middle Bands	Under	Upper	Upper
CMNP.JK	1,490	1,470	1,465	1,490	1,480	Neutral	Bearish	Neutral	Middle Bands	Under	Under	Under
CPIN.JK	3,300	3,130	3,020	3,230	3,140	Neutral	Bullish	Neutral	Middle Bands	Under	Under	Under
CSAP.JK	515	498	498	500	498	Neutral	Bullish	Neutral	Middle Bands	Under	Under	Upper
CTRA.JK	1,405	1,295	1,370	1,370	1,300	Oversold	Bearish	Neutral	Middle Bands	Under	Under	Under
DILD.JK	510	450	468	466	454	Oversold	Bullish	Neutral	Middle Bands	Under	Under	Under
EXCL.JK	3,090	2,900	2,870	3,070	2,920	Oversold	Bearish	Neutral	Middle Bands	Under	Upper	Under
GGRM.JK	62,850	63,400	60,050	66,000	64,425	Neutral	Bearish	Neutral	Middle Bands	Upper	Upper	Under
GIAA.JK	356	342	338	356	342	Oversold	Bearish	Neutral	Middle Bands	Under	Upper	Under
GJTL.JK	1,295	1,190	1,005	1,295	1,215	Neutral	Bearish	Neutral	Middle Bands	Upper	Upper	Upper
HEXA.JK	4,250	3,870	3,300	4,250	3,700	Overbought	Bearish	Neutral	Middle Bands	Upper	Upper	Upper
HRUM.JK	2,280	2,310	2,130	2,380	2,190	Neutral	Bullish	Neutral	Middle Bands	Upper	Upper	Upper
ICBP.JK	8,475	8,300	8,200	8,375	8,325	Neutral	Bearish	Neutral	Middle Bands	Under	Under	Under
IMAS.JK	1,340	1,295	1,260	1,310	1,285	Neutral	Bullish	Neutral	Middle Bands	Under	Under	Under
INCO.JK	2,600	2,550	2,480	2,600	2,560	Neutral	Bullish	Neutral	Middle Bands	Under	Under	Under
INDF.JK	8,175	8,075	7,950	8,175	8,100	Neutral	Bullish	Neutral	Middle Bands	Upper	Upper	Upper
INDY.JK	770	735	720	770	735	Oversold	Bullish	Neutral	Middle Bands	Under	Upper	Upper
INTA.JK	336	344	328	354	338	Neutral	Bullish	Neutral	Upper Bands	Upper	Upper	Upper
INTP.JK	15,800	15,475	15,150	15,800	15,550	Neutral	Bullish	Neutral	Middle Bands	Under	Upper	Under
ITMG.JK	18,150	17,075	14,950	18,150	17,600	Neutral	Bearish	Neutral	Middle Bands	Upper	Upper	Upper
JFJA.JK	1,950	1,720	1,620	1,785	1,730	Neutral	Bullish	Neutral	Middle Bands	Under	Upper	Upper
JSMR.JK	4,280	4,580	4,660	4,890	4,690	Neutral	Bearish	Neutral	Lower Bands	Under	Upper	Under
KJAJ.JK	312	316	294	318	308	Neutral	Bullish	Overbought	Upper Bands	Upper	Upper	Upper
KLBF.JK	1,550	1,525	1,445	1,550	1,485	Neutral	Bearish	Neutral	Middle Bands	Upper	Upper	Under
KRAS.JK	745	700	660	740	715	Neutral	Bearish	Neutral	Middle Bands	Under	Under	Under
LPCK.JK	5,425	4,610	4,770	4,710	4,650	Oversold	Bearish	Oversold	Middle Bands	Under	Under	Under
LPKR.JK	785	730	750	745	730	Oversold	Bullish	Neutral	Middle Bands	Under	Under	Under
LPPF.JK	15,050	13,075	11,175	13,950	13,025	Neutral	Bullish	Neutral	Middle Bands	Under	Under	Under
LSIP.JK	1,560	1,510	1,470	1,560	1,515	Neutral	Bearish	Neutral	Middle Bands	Under	Under	Under
MAIN.JK	1,275	1,225	1,210	1,270	1,240	Neutral	Bullish	Neutral	Middle Bands	Under	Under	Under
MAPI.JK	5,550	5,350	5,275	5,550	5,375	Oversold	Bullish	Neutral	Middle Bands	Under	Under	Upper
MASA.JK	248	226	200	228	210	Neutral	Bullish	Neutral	Middle Bands	Under	Under	Upper
MNCN.JK	1,690	1,650	1,610	1,690	1,660	Neutral	Bearish	Neutral	Middle Bands	Upper	Under	Under
MPPA.JK	1,480	1,200	1,180	1,260	1,215	Neutral	Bullish	Neutral	Middle Bands	Under	Under	Under
MTLA.JK	274	320	296	334	314	Overbought	Bearish	Neutral	Middle Bands	Upper	Upper	Upper
MYOR.JK	2,110	2,110	1,800	2,130	2,050	Neutral	Bearish	Overbought	Middle Bands	Upper	Upper	Upper
PGAS.JK	2,890	2,830	2,750	2,850	2,820	Neutral	Bullish	Neutral	Middle Bands	Upper	Upper	Upper
PTBA.JK	11,375	10,750	11,025	11,300	11,025	Neutral	Bearish	Neutral	Middle Bands	Under	Under	Upper
RALS.JK	1,320	1,155	1,270	1,320	1,200	Oversold	Bearish	Neutral	Lower Bands	Under	Under	Under
ROTI.JK	1,600	1,535	1,535	1,600	1,550	Neutral	Bearish	Neutral	Middle Bands	Under	Under	Under
SCMA.JK	3,180	2,740	2,780	3,060	2,780	Oversold	Bearish	Neutral	Middle Bands	Under	Under	Under
SGRO.JK	2,080	2,050	2,010	2,080	2,050	Neutral	Bearish	Neutral	Middle Bands	Upper	Upper	Upper
SIMP.JK	585	550	505	585	520	Neutral	Bearish	Neutral	Middle Bands	Upper	Upper	Upper
SMCB.JK	920	910	865	920	910	Neutral	Bullish	Neutral	Middle Bands	Upper	Upper	Under
SMGR.JK	9,675	9,500	9,075	9,650	9,500	Neutral	Bearish	Neutral	Middle Bands	Upper	Upper	Upper
SMRA.JK	1,440	1,400	1,345	1,400	1,380	Neutral	Bullish	Neutral	Middle Bands	Upper	Upper	Under
SRIL.JK	298	496	272	496	352	Overbought	Bullish	Overbought	Upper Bands	Upper	Upper	Upper
SSIA.JK	570	570	540	575	555	Neutral	Bullish	Neutral	Middle Bands	Under	Upper	Under
SSMS.JK	1,665	1,380	1,455	1,550	1,405	Neutral	Bearish	Oversold	Middle Bands	Under	Under	Under
TLKM.JK	3,900	3,920	3,830	3,920	3,870	Neutral	Bullish	Neutral	Upper Bands	Upper	Upper	Under
TOTL.JK	840	820	800	840	825	Neutral	Bearish	Neutral	Middle Bands	Upper	Upper	Upper
UNTR.JK	25,525	26,200	23,750	26,200	24,950	Neutral	Bullish	Neutral	Upper Bands	Upper	Upper	Upper
UNVR.JK	42,825	42,375	42,075	42,600	42,150	Neutral	Bullish	Neutral	Middle Bands	Upper	Upper	Under

Source : Reliance Research

Legend :

- Movement: Bullish and Bearish (Indicator Stochastic)
- Momentum: Oversold, Overbought and Neutral (Indicator RSI)
- Resistance Fractal: Strong Resistance
- Support Fractal: Strong Support
- Green: Good Conditions
- Red: Poor Conditions

FR 73



R3	109.51
R2	108.34
R1	106.94
Last	106.75
S1	106.01
S2	104.60
S3	102.75

BUY

Comment:

Whipsaw at bullish trend support level. Reversal signal.

Stochastic bullish movement after golden-cross at oversold oscillator.

RSI consolidations momentum at near overbought.

Medium term bullish trend movement.

Upside target to 108.34 (Resistance target level). Stop-loss level if broke the MA25 support level at 106.33.

Indonesian Technical Bond

Ticker	Resistance	Price	Support	Weekly	Weekly	Indicator			Moving Average			
	Fractal	3/6/2017	Fractal	High	Low	Stochastic	RSI	B. Band	25 Days	50 Days	200 Days	
FR34	120.37	120.31	120.05	120.31	120.11	Neutral	Bullish	Neutral	Upper Bands	Upper	Upper	Under
FR43	112.57	112.51	112.33	112.57	112.47	Neutral	Bearish	Neutral	Upper Bands	Upper	Upper	Under
FR47	115.82	115.53	115.44	116.14	115.53	Neutral	Bullish	Neutral	Upper Bands	Upper	Upper	Under
FR53	103.91	103.91	103.57	103.91	103.63	Neutral	Bullish	Neutral	Upper Bands	Upper	Upper	Under
FR54	112.47	112.34	111.93	112.57	112.23	Neutral	Bullish	Neutral	Lower Bands	Upper	Upper	Under
FR56	106.29	105.81	105.76	106.29	105.81	Neutral	Bearish	Neutral	Upper Bands	Upper	Upper	Under
FR58	102.00	101.62	101.46	102.00	101.74	Neutral	Bearish	Neutral	Upper Bands	Upper	Upper	Under
FR59	96.63	96.63	96.36	96.63	96.39	Overbought	Bullish	Neutral	Upper Bands	Upper	Upper	Under
FR64	87.15	86.92	86.69	87.15	86.81	Neutral	Bearish	Neutral	Upper Bands	Upper	Upper	Under
FR66	98.71	98.61	98.56	98.63	98.63	Neutral	Bullish	Neutral	Upper Bands	Under	Upper	Upper
FR68	103.05	103.05	102.61	103.05	102.63	Neutral	Bullish	Neutral	Upper Bands	Upper	Upper	Under
FR69	102.10	101.99	101.95	102.10	101.97	Neutral	Bearish	Neutral	Upper Bands	Upper	Upper	Under
FR70	104.88	104.64	104.52	104.67	104.62	Neutral	Bullish	Neutral	Upper Bands	Upper	Upper	Under
FR71	108.21	107.93	107.52	108.21	107.93	Neutral	Bearish	Neutral	Upper Bands	Upper	Upper	Under
FR72	102.09	102.09	101.65	102.09	101.68	Overbought	Bullish	Neutral	Upper Bands	Upper	Upper	Under
FR73	107.47	106.75	106.19	107.47	106.75	Neutral	Bearish	Neutral	Upper Bands	Upper	Upper	Under
ORI13	98.21	98.44	98.07	98.44	98.15	Overbought	Bullish	Neutral	Middle Bands	Upper	Upper	Upper
ORI12	103.62	103.62	103.32	103.62	103.46	Neutral	Bullish	Neutral	Upper Bands	Upper	Under	Under
SR06	100.28	100.32	100.06	100.32	100.08	Neutral	Bullish	Neutral	Upper Bands	Upper	Under	Under
SR08	102.64	102.64	102.44	102.64	102.47	Neutral	Bullish	Neutral	Upper Bands	Upper	Upper	Under

Analyst: Lanjar Nafi, lanjar@reliance-securities.com

Source: Reliance Research

Legend :

- Movement: Bullish and Bearish (Indicator Stochastic)
- Momentum: Oversold, Overbought and Neutral (Indicator RSI)
- Resistance Fractal: Strong Resistance
- Support Fractal: Strong Support
- Green: Good Conditions
- Red: Poor Conditions

HEAD OFFICE

Reliance Building

Jl. Pluit Sakti Raya No. 27AB,
Pluit
Jakarta 14450
T. +62 21 661 7768
F. +62 21 661 9884

RESEARCH DIVISION

Robertus Yanuar Hardy

robertus@reliance-securities.com

Rio Adrianus

rio.adrianus@reliance-securities.com

Lanjar Nafi Taulat I

lanjar@reliance-securities.com

Aji Setiawan

aji@reliance-securities.com

Shanti Dwi Jayanti

santi@reliance-securities.com

Senior Analyst

Research Analyst

Technical Research Analyst

Associate Research Analyst

Associate Research Analyst

EQUITY DIVISION

Jakarta- Pluit

Jl. Pluit Sakti Raya No. 27AB,
Pluit
Jakarta 14450
T. +62 21 661 7768
F. +62 21 661 9884

Bandung

Jl.Cisangkuy No.58
Bandung 40115
T. +62 22 721 8200
F. +62 22 721 9255

Surabaya - Gubeng

Jl. Bangka No. 22
Surabaya 60281
T. +62 31 501 1128
F. +62 31 503 3196

Makassar

Jl. Boto Lempangan No. 34 J
Makassar- Sulawesi Selatan
T. +62 411 3632388
F. +62 411 3614634

Jakarta - Sudirman

Menara Batavia Ground Floor
Jl.KH.Mas Mansyur Kav 126
Jakarta 10220
T. +62 21 57905455
F. +62 21 57950728

Tasikmalaya

Ruko Tasik Indah Plaza No.21
Jl. KHZ Mustofa No. 345
Tasikmalaya 46121
T. +62 265 345000
F. +62 265 345003

Surabaya - Diponegoro

Jl. Diponegoro No.26D
Surabaya 60261
T. +62 31 567 0388
F. +62 31 561 0528

Medan

Jl. Teuku Amir Hamzah No.40-O
Medan 20117
T. +62 61 6638592
F. +62 61 6638023

Jakarta - Kebon Jeruk

Plaza Kebon Jeruk
Jl.Raya Perjuangan Blok A/2
Jakarta 11530
T. +62 21 532 4074
F. +62 21 536 2157

Malang

Jl. Guntur No. 19
Malang 65112
T. +62 341 347 611
F. +62 341 347 615

Bali - Denpasar

Dewata Square Blok A3
Jl. Letda Tantular Renon
Denpasar 802361
T. +62 361 225099
F. +62 361 245099

Tangerang

Jl. Pahlawan Seribu Ruko BSD
Sektor 7 Blok RK kav. 9
Tangerang 15310
T. +62 21 5387495
F. +62 21 5387494

Pekanbaru

Jl. Jendral Sudirman No.73
Pekanbaru-Riau
T. +62 761 848414
F. +62 761 849456

Pontianak

Jl. MT Haryono No. 6
Pontianak 78121
T. +62 561 575674
F. +62 561 575670

Jakarta - Centro

Ruko Centro Residence Kav. 4-5
Tower C Lt. 1 No. 26-29
Jl. Macan, Daan Mogot
Jakarta 14450
T. +62 21 56945227
F. +62 21 56945226

Solo

Jl. Slamet Riyadi 330^a
Solo 57145
T. +62 271 736599
F. +62 271 733478

Balikpapan

Ruko Bukit Damai Indah
Blok I, No. 3, Rt.34
Jl. MT. Haryono, Gunung
Bahagia, Balikpapan Selatan
76114
T. +62 542 746313
F. +62 542 746317

IDX CORNER & INVESTMENT GALLERY

President University

Resto Plaza 1F - Jababeka
Education Park
Jl. Ki Hajar Dewantara Raya
Cikarang - Bekasi 17550
T. +62 21 89106030

Universitas Siliwangi Tasikmalaya

Jl. Siliwangi No. 24
Tasikmalaya 46151
T. +62 265 323685
F. +62 265 323534

Politeknik Kediri

Jl. Mayor Bismo No. 27
Kediri 64121
T. +62 354 683128
F. +62 354 683128

Universitas Muhammadiyah Sidoarjo

Jl. Majapahit 666 B
Sidoarjo, Jawa Timur
T. +62 31 8945444
F. +62 31 8949333

Universitas Tanjungpura Pontianak

Jl. Jendral Ahmad Yani
Pontianak 78124
T. +62 561 743465
F. +62 561 766840

Universitas Pesantren Tinggi Darul Ulum

Kompleks Pp Darul Ulu,
Peterongan
Jombang, Jawa Timur 60281
T. +62 321 873655
F. +62 321 875771

STIE "AUB" Surakarta

Jl. Mr. Sartono 97, Cengklik
Nusukan, Surakarta 57135
T. +62 271 854803
F. +62 271 853084

Universitas Surabaya

Jl. Raya Kalirungkut
Surabaya 60293
T. +62 31 298 1203
F. +62 31 298 1204

Universitas Muhammadiyah Gresik

Jl. Sumatra 101 GKB
Gresik 61121
T. +62 31 395 1414
F. +62 31 395 2585

Universitas Negeri Malang

Jl. Surabaya No. 6
Malang 65145
T. +62 341 585914
F. +62 341 55288

Universitas Muhammadiyah Malang

Jl. Raya Tlogomas 246
Malang 65144
T. +62 341 464318-9
F. +62 341 460782

FSEI IAIN Antasari

Jl. Ahmad Yani Km. 4,5
Banjarmasin
T. + 62 511 3265783

STIE Malangkececwara

Jl. Terusan Candi Kalasan
Malang 65142
T. +62 341 491813
F. +62 341 495619

STIESIA Surabaya

Jl. Menur Pumpungan 30
Surabaya
T. +62 31 5947505
F. +62 31 5932218

Universitas 17 Agustus 1945 Banyuwangi

Jl. Adi Sucipto 26
Banyuwangi, Jawa Timur
T. +62 333 419613
F. +62 333 419163

STIE Tri Bhakti

Jl. Teuku Umar No. 24
Cut Meutia Setiakawan,
Bekasi
T. +62 21 82429400,
82429500
F. +62 271 726156

Universitas Islam Kalimantan

Jl. Adiyaksa No. 2, Kayu
Tangi, Banjarmasin
T. + 62 511 3303871
F. + 62 511 3303871

STIKOM Bali

Jalan Puputan No. 86, Renon,
Denpasar
T. +62361 244445
F. +62361 264773

Universitas Muhammadiyah Pontianak

Fakultas Ekonomi UM
Pontianak
Jl. Ahmad Yani, No. 111,
Pontianak 78124
T. +62561 743465
F. +62561 766840

Universitas Negeri Makassar

Fakultas Ekonomi Gedung BT
Lt.2
Jl. A.P. Pettarani, Kampus
UNM, Gunungsari Baru
Makassar 90222
T. +62 411 889464 / 881244
F. +62 411 887604

STIE AAS Surakarta

Jl. Slamet Riyadi No. 361,
Kartasura, Surakarta
T. +62 271 726156
F. +62 271 726156

UPN "Veteran" Yogyakarta

Jl. Babarsari 2, Tambak Bayan
Yogyakarta
T. +62 274 485268
F. +62 274 487147

Disclaimer:

Information, opinions and recommendations contained in this document are presented by PT Reliance Securities Tbk. from sources that are considered reliable and dependable. This document is not an offer, invitation or any kind of representations to decide to buy or sell stock. Investment decisions taken based on this document is not the responsibility of PT Reliance Securities Tbk. PT Reliance Securities Tbk. reserves the right to change the contents of this document at any time without prior notice.