

## IHSG



5393.76  
-8.85  
-0.16%

Vol (Mn): 7,526  
Val (Bn): 5,905

## LQ45



893.97  
-2.65  
-0.30%

Sector Indices	Last	Change	Change %
Agriculture	1837.49	(6.44)	(0.35)
Basic Industry	560.29	1.65	0.29
Consumer	2394.61	11.17	0.47
Finance	831.43	0.89	0.11
Infrastructure	1058.97	(13.56)	(1.28)
Manufacture	1414.14	1.90	0.13
Mining	1411.34	(13.89)	(0.98)
Misc Industry	1418.42	(15.75)	(1.11)
Property	506.13	(3.50)	(0.69)
Trade	866.63	1.80	0.21

Source: relitrade next G

Most Active	Last	Change %	Freq
SRIL	402	(4.3)	22,315
BMTR	530	0.0	11,004
AGRO	900	(2.2)	10,445
INDX	150	(12.8)	10,157
PKPK	87	(7.4)	7,322

Most Volume	Last	Change %	M share
MYRX	123	(3.1)	19,172
SRIL	402	(4.3)	7,661
DEWA	74	0.0	5,209
BRMS	95	(1.0)	4,900
TRAM	93	(9.7)	3,047

Most Value	Last	Change %	Rp Bil
SRIL	402	(4.3)	315.19
BBCA	15,500	0.3	270.74
MYRX	123	(3.1)	239.02
LPPF	13,050	(1.1)	229.66
BBRI	12,000	0.0	195.66

Source: relitrade next G

## IHSG Technical Review



R3	5700
R2	5540
R1	5400
Last	5393.76
S1	5280
S2	5175
S3	5100

### Comment:

Pulled back upper Bollinger bands and false break the resistance level.

Stochastic, bearish movement after dead-cross at overbought oscillator.

RSI consolidations at middle oscillator.

Long term bullish trend movement.

Stop-loss level if broke the support level at 5380. Downside potential until 5304 (MA50 support level).

## JSMR



R3	5000
R2	4660
R1	4580
Last	4580
S1	4360
S2	4140
S3	3900

**TRADING BUY**

### Comment:

Bullish harami candlestick pattern. Moderate trading volume.

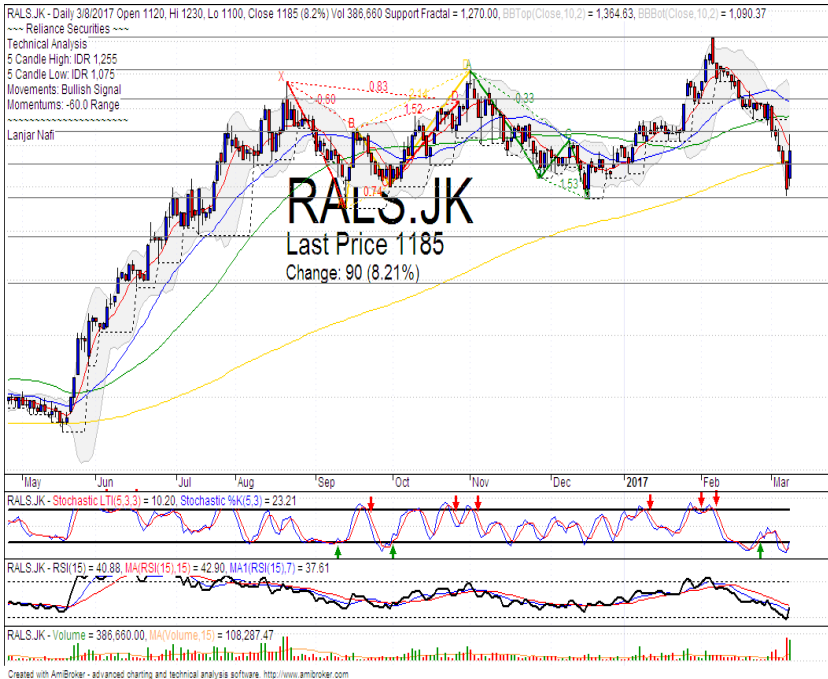
Stochastic, golden-cross at oversold oscillator. Broad upside potential.

RSI bullish reversal momentum at oversold oscillator.

Medium term bullish term bearish trend movement.

Upside target to 4780 (MA200 target level). Stop-loss level if broke the bullish trend support level at 4420.

## RALS



R3	1415
R2	1325
R1	1240
Last	1185
S1	1155
S2	1075
S3	985

**SPECULATIVE BUY**

### Comment:

Whipsaw at MA200 support level. Reversal signal. Huge trading volume.

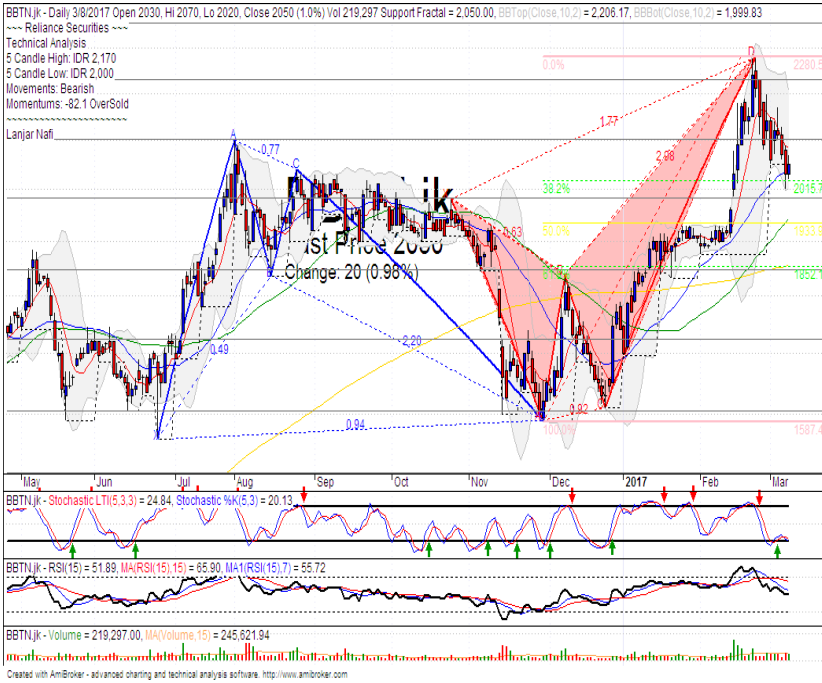
Stochastic Golden-cross at oversold oscillator. Broad upside potential.

RSI bullish reversal momentum at near oversold oscillator.

Short term bearish trend movement.

Upside target to MA25 Resistance target level at 1315. Stop-loss level at 1120 if broke MA200 support level.

## BBTN



R3	2360
R2	2230
R1	2100
Last	2050
S1	1980
S2	1855
S3	1725

### TRADING BUY

#### Comment:

Arrived at 38.2% corrections target of bearish butterfly pattern. Trying rebounded at MA25 support level.

Stochastic golden-cross at oversold oscillator. Broad upside potential.

RSI bearish momentum at middle oscillator.

Short term bearish trend movement.

Upside target to 2200 Upper Bollinger bands resistance level at 2200. Stop-loss level at 1970 if Broke the MA25 support level.

## EXCL



R3	3440
R2	3150
R1	2930
Last	2830
S1	2680
S2	2460
S3	2250

### TRADING BUY

#### Comment:

Inverted hammer candlestick. Reversal signal. Moderate trading volume.

Stochastic Golden-cross at oversold oscillator. Broad upside potential.

RSI bearish momentum at near oversold oscillator.

Medium term bullish trend movement.

Upside target to 3180. Stop-loss level if broke the bullish trend support level 2740.

Stocks	S2	S1	Closing Price	R1	R2	Technical Notes	Rec	Stop Loss	Rec Buy Prc	Target Price
<b>Plantation</b>										
AALI	14,000	14,900	15,200	15,850	16,700	Pulled back bearish trend	PS	14,800		
LSIP	1,400	1,475	1,505	1,545	1,630	Bullish consolidations	TB	1,470		1,620
<b>Mining</b>										
INCO	2,120	2,300	2,460	2,500	2,670	Consolidations	TB	2,400		2,630
<b>Consumer</b>										
UNVR	39,800	41,000	42,425	42,500	44,000	Bullish consolidations	TB	41,000		43,100
INDF	7,250	7,900	7,975	8,500	9,125	Sideways	W	7,850		
KLBF	1,420	1,485	1,500	1,540	1,600	Bullish consolidations	TB	1,480		1,575
<b>Trading</b>										
ACES	710	755	760	810	870	Oversold	W	750		
AKRA	6,100	6,100	6,125	6,350	6,600	Oversold	W	6,000		
UNTR	24,000	25,325	25,600	26,750	28,175	Bearish momentum	S	25,300		
<b>Property &amp; Construction</b>										
LPCK	4,580	4,600	4,600	4,820	5,125	Oversold	TB	4,580		4,800
WIKA	2,200	2,400	2,450	2,600	2,800	Sideways	W	2,390		
BSDE	1,630	1,720	1,765	1,830	1,935	Stoch golden-cross	SB	1,700	1,760	1,860
WSKT	2,260	2,410	2,440	2,600	2,800	Bullish consolidations	SB	2,400	2,430	2,600
ADHI	2,200	2,300	2,320	2,410	2,540	Pulled back MA200	PS	2,280		
<b>Basic Industry &amp; Chemical</b>										
SMGR	8,150	8,725	9,325	9,350	9,900	Consolidations	W	9,100		
CPIN	2,850	3,000	3,080	3,210	3,400	Bearish trend	PS	3,040		
MAIN	1,050	1,180	1,225	1,300	1,400	Oversold	W	1,200		
INTP	14,600	14,600	15,400	15,500	16,350	Consolidations	W	15,300		
<b>Miscellaneous</b>										
SRIL	350	400	402	450	496	Bearish momentum	PS	380		
ASII	7,850	8,250	8,400	8,650	9,000	Bearish momentum	S	8,200		
<b>Finance</b>										
BBTN	1,850	1,980	2,050	2,100	2,200	Bullish harami	TB	1,970		2,200
BMRI	10,750	11,000	11,325	11,450	11,800	Consolidations	W	11,000		
BTPN	2,340	2,550	2,760	2,770	3,000	Bearish momentum	PS	2,600		
BJBR	2,140	2,210	2,300	2,470	2,760	Sideways	TB	2,200		2,570
BBRI	11,100	11,725	12,000	12,300	13,000	Sideways	TB	11,700		12,300
<b>Infrastructure</b>										
TLKM	3,510	3,710	3,880	3,950	4,200	Pulled back resistance level	PS	3,700		
PGAS	2,360	2,560	2,740	2,800	3,050	Broke support level	PS	2,700		

Source : Reliance Securities

### Analyst Conclusions:

The index rebounded at support level but having limited momentum.

Legend :

- B: BUY (allocate till 100% of the weighted capital to accumulate, higher than 50% upside probability)
- SB: SPECULATIVE BUY (allocate 25%-50% of the weighted capital to accumulate, 25%-50% upside probability)
- W: WAIT (wait for proper entry level, do the stop-loss if necessary)
- H: HOLD (hold the portfolio position, aim for the best price to distribute)
- PS: PARTIAL SELL (distribute 25%-50% part of the portfolio, 25%-50% downside probability)
- S: SELL (distribute till 100% of the portfolio, higher than 50% downside probability)
- TB: TRADING BUY (short term or intraday trading within a tight trading range. Highly speculative).

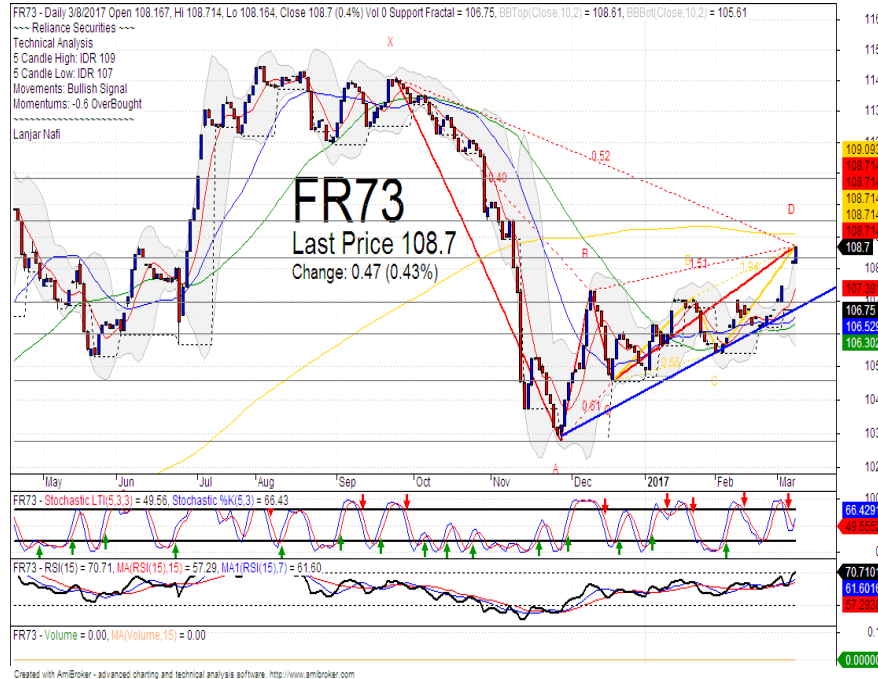
Ticker	Resistance	Price	Support	Weekly	Weekly	Indicator			Moving Average			
	Fractal	3/8/2017	Fractal	High	Low	Stochastic	RSI	B. Band	25 Days	50 Days	200 Days	
AALI.JK	15,850	15,200	14,675	15,400	15,350	Neutral	Bullish	Neutral	Middle Bands	Under	Under	Under
ACES.JK	795	760	745	785	755	Neutral	Bullish	Neutral	Middle Bands	Under	Under	Under
ADHI.JK	2,350	2,320	2,080	2,400	2,210	Overbought	Bearish	Neutral	Middle Bands	Upper	Upper	Under
ADRO.JK	1,755	1,695	1,665	1,755	1,690	Neutral	Bearish	Neutral	Middle Bands	Under	Under	Upper
AISA.JK	2,220	2,200	1,950	2,220	2,170	Overbought	Bearish	Neutral	Middle Bands	Upper	Upper	Upper
AKRA.JK	6,850	6,125	6,150	6,375	6,225	Neutral	Bearish	Neutral	Middle Bands	Under	Under	Under
ANTM.JK	785	730	740	785	750	Neutral	Bearish	Neutral	Middle Bands	Under	Under	Under
APLN.JK	234	226	222	230	228	Neutral	Bullish	Neutral	Middle Bands	Under	Upper	Under
ASII.JK	8,150	8,400	7,850	8,575	8,550	Neutral	Bearish	Neutral	Middle Bands	Upper	Upper	Upper
ASRI.JK	398	372	362	378	370	Neutral	Bullish	Neutral	Middle Bands	Under	Under	Under
BBCA.JK	15,675	15,500	15,350	15,675	15,475	Neutral	Bullish	Neutral	Upper Bands	Upper	Upper	Upper
BBKP.JK	630	610	605	620	615	Neutral	Bearish	Neutral	Middle Bands	Under	Under	Under
BBNI.JK	6,375	6,275	6,125	6,350	6,300	Neutral	Bearish	Neutral	Middle Bands	Upper	Upper	Upper
BBRI.JK	12,025	12,000	11,850	12,125	11,950	Neutral	Bullish	Neutral	Middle Bands	Upper	Upper	Upper
BBTN.JK	2,170	2,050	2,050	2,170	2,070	Neutral	Bearish	Neutral	Middle Bands	Upper	Upper	Upper
BDMN.JK	5,050	4,800	4,700	4,970	4,800	Neutral	Bullish	Neutral	Middle Bands	Upper	Upper	Upper
BHIT.JK	135	128	128	140	131	Neutral	Bearish	Neutral	Lower Bands	Under	Under	Under
BJBR.JK	2,390	2,300	2,210	2,340	2,300	Neutral	Bearish	Neutral	Lower Bands	Under	Under	Upper
BJTM.JK	575	555	540	575	560	Neutral	Bearish	Neutral	Middle Bands	Under	Under	Upper
BKSL.JK	99	94	93	97	95	Overbought	Bullish	Neutral	Middle Bands	Under	Upper	Upper
BMRI.JK	11,450	11,325	11,200	11,450	11,350	Neutral	Bearish	Neutral	Middle Bands	Upper	Upper	Upper
BMTR.JK	630	530	505	560	540	Neutral	Bearish	Neutral	Middle Bands	Under	Under	Under
BSDE.JK	1,920	1,765	1,745	1,815	1,785	Neutral	Bullish	Neutral	Middle Bands	Under	Under	Under
BTPN.JK	2,840	2,760	2,700	2,790	2,760	Neutral	Bullish	Neutral	Middle Bands	Upper	Upper	Upper
BWPT.JK	386	354	344	386	368	Neutral	Bearish	Neutral	Middle Bands	Under	Upper	Upper
CMNP.JK	1,490	1,465	1,465	1,485	1,470	Overbought	Bearish	Neutral	Lower Bands	Under	Under	Under
CPIN.JK	3,230	3,080	3,020	3,230	3,110	Neutral	Bearish	Neutral	Middle Bands	Under	Under	Under
CSAP.JK	515	498	494	500	498	Neutral	Bullish	Neutral	Middle Bands	Under	Under	Upper
CTRA.JK	1,405	1,295	1,265	1,335	1,300	Neutral	Bullish	Neutral	Middle Bands	Under	Under	Under
DILD.JK	510	448	468	460	450	Overbought	Bullish	Neutral	Middle Bands	Under	Under	Under
EXCL.JK	3,090	2,830	2,870	3,000	2,870	Overbought	Bullish	Neutral	Middle Bands	Under	Upper	Under
GGRM.JK	62,850	62,825	60,050	66,000	63,475	Neutral	Bearish	Neutral	Middle Bands	Upper	Under	Under
GAJA.JK	356	340	338	346	342	Overbought	Bullish	Neutral	Middle Bands	Under	Under	Under
GJTL.JK	1,295	1,220	1,135	1,270	1,215	Neutral	Bullish	Neutral	Middle Bands	Upper	Upper	Upper
HEXA.JK	4,250	3,940	3,750	4,250	3,940	Neutral	Bearish	Neutral	Middle Bands	Upper	Upper	Upper
HRUM.JK	2,280	2,400	2,130	2,460	2,240	Neutral	Bearish	Overbought	Middle Bands	Upper	Upper	Upper
ICBP.JK	8,475	8,200	8,200	8,375	8,300	Neutral	Bullish	Neutral	Lower Bands	Under	Under	Under
IMAS.JK	1,310	1,275	1,260	1,310	1,275	Neutral	Bearish	Neutral	Middle Bands	Under	Under	Under
INCO.JK	2,580	2,460	2,480	2,580	2,490	Neutral	Bearish	Neutral	Middle Bands	Under	Under	Under
INDF.JK	8,175	7,975	7,950	8,150	8,050	Neutral	Bearish	Neutral	Lower Bands	Under	Upper	Upper
INDY.JK	770	735	720	775	735	Neutral	Bullish	Neutral	Middle Bands	Under	Upper	Upper
INTA.JK	354	344	328	354	344	Neutral	Bearish	Neutral	Middle Bands	Upper	Upper	Upper
INTP.JK	15,775	15,400	15,325	15,775	15,500	Neutral	Bearish	Neutral	Middle Bands	Under	Upper	Under
ITMG.JK	18,150	17,125	14,950	18,150	17,250	Neutral	Bearish	Neutral	Middle Bands	Upper	Upper	Upper
JFJA.JK	1,775	1,680	1,620	1,775	1,700	Neutral	Bearish	Neutral	Middle Bands	Under	Upper	Upper
JSMR.JK	4,280	4,580	4,660	4,820	4,590	Overbought	Bearish	Neutral	Middle Bands	Under	Upper	Under
KUJA.JK	312	320	294	320	316	Overbought	Bullish	Overbought	Middle Bands	Upper	Upper	Upper
KLBF.JK	1,550	1,500	1,460	1,530	1,485	Neutral	Bullish	Neutral	Middle Bands	Upper	Under	Under
KRAS.JK	745	685	660	740	700	Neutral	Bearish	Neutral	Middle Bands	Under	Under	Under
LPCK.JK	5,425	4,600	4,600	4,680	4,640	Overbought	Bearish	Overbought	Middle Bands	Under	Under	Under
LPKR.JK	785	725	705	740	730	Neutral	Bullish	Neutral	Middle Bands	Under	Under	Under
LPPF.JK	15,050	13,050	11,175	13,375	13,025	Neutral	Bullish	Neutral	Middle Bands	Under	Under	Under
LSIP.JK	1,560	1,505	1,470	1,545	1,515	Neutral	Bullish	Neutral	Middle Bands	Under	Under	Under
MAIN.JK	1,275	1,225	1,210	1,270	1,240	Neutral	Bearish	Neutral	Middle Bands	Under	Under	Under
MAPI.JK	5,550	5,500	5,200	5,600	5,375	Neutral	Bullish	Neutral	Middle Bands	Upper	Upper	Upper
MASA.JK	248	214	200	228	218	Neutral	Bearish	Neutral	Middle Bands	Under	Under	Under
MNCN.JK	1,690	1,655	1,610	1,670	1,655	Neutral	Bearish	Neutral	Middle Bands	Upper	Under	Under
MPPA.JK	1,260	1,230	1,180	1,260	1,225	Neutral	Bullish	Neutral	Middle Bands	Under	Under	Under
MTLA.JK	334	330	296	334	320	Neutral	Bearish	Overbought	Middle Bands	Upper	Upper	Upper
MYOR.JK	2,110	2,150	2,000	2,150	2,050	Overbought	Bullish	Overbought	Middle Bands	Upper	Upper	Upper
PGAS.JK	2,890	2,740	2,750	2,850	2,810	Neutral	Bearish	Neutral	Middle Bands	Under	Under	Upper
PTBA.JK	11,375	10,800	10,750	11,275	11,025	Overbought	Bearish	Neutral	Middle Bands	Under	Under	Upper
RALS.JK	1,320	1,185	1,270	1,255	1,160	Overbought	Bullish	Neutral	Middle Bands	Under	Under	Upper
ROTI.JK	1,600	1,530	1,535	1,570	1,535	Neutral	Bullish	Neutral	Middle Bands	Under	Under	Under
SCMA.JK	3,180	2,800	2,720	2,930	2,780	Overbought	Bullish	Neutral	Middle Bands	Under	Under	Under
SCRO.JK	2,080	2,050	2,010	2,060	2,050	Neutral	Bullish	Neutral	Middle Bands	Upper	Upper	Upper
SIMP.JK	585	610	505	665	560	Neutral	Bullish	Overbought	Upper Bands	Upper	Upper	Upper
SMCB.JK	920	920	895	920	910	Neutral	Bullish	Neutral	Middle Bands	Upper	Upper	Under
SMGR.JK	9,675	9,325	9,075	9,550	9,475	Neutral	Bearish	Neutral	Middle Bands	Under	Upper	Under
SMRA.JK	1,400	1,375	1,345	1,400	1,385	Neutral	Bearish	Neutral	Middle Bands	Upper	Upper	Under
SRIL.JK	496	402	272	496	392	Neutral	Bearish	Neutral	Middle Bands	Upper	Upper	Upper
SSIA.JK	570	580	540	590	555	Neutral	Bullish	Neutral	Upper Bands	Upper	Upper	Under
SSMS.JK	1,665	1,400	1,375	1,505	1,405	Overbought	Bearish	Overbought	Middle Bands	Under	Under	Under
TLKM.JK	3,900	3,880	3,810	3,950	3,870	Neutral	Bullish	Neutral	Middle Bands	Under	Under	Under
TOTL.JK	840	810	810	840	820	Neutral	Bearish	Neutral	Middle Bands	Under	Upper	Upper
UNTR.JK	25,525	25,600	23,750	26,600	25,125	Overbought	Bearish	Neutral	Middle Bands	Upper	Upper	Upper
UNVR.JK	42,825	42,425	41,825	42,525	42,150	Neutral	Bullish	Neutral	Middle Bands	Upper	Upper	Under

Source : Reliance Research

### Legend :

- Movement: Bullish and Bearish (Indicator Stochastic)
- Momentum: Oversold, Overbought and Neutral (Indicator RSI)
- Resistance Fractal: Strong Resistance
- Support Fractal: Strong Support
- Green: Good Conditions
- Red: Poor Conditions

## FR 73



R3	111.92
R2	110.87
R1	109.51
Last	108.70
S1	108.34
S2	106.94
S3	106.01
<b>HOLD</b>	

**Comment:**  
 Bullish momentum trying to reached the MA200 target level.  
 Stochastic bullish movement after golden-cross at oversold oscillator.  
 RSI consolidations momentum at near overbought.  
 Medium term bullish trend movement.  
 Upside target to 109.08 (MA200 target level). Stop-loss level if pulled back upper Bollinger bands at 107.70.

## Indonesian Technical Bond

Ticker	Resistance	Price	Support	Weekly	Weekly	Indicator			Moving Average			
	Fractal	3/8/2017	Fractal	High	Low	Stochastic	RSI	B. Band	25 Days	50 Days	200 Days	
FR34	120.37	120.36	120.05	120.36	120.11	Neutral	Bullish	Neutral	Upper Bands	Upper	Upper	Under
FR43	112.62	113.02	112.33	113.02	112.47	Neutral	Bullish	Neutral	Upper Bands	Upper	Upper	Under
FR47	115.82	117.00	115.44	117.00	115.59	Overbought	Bullish	Overbought	Upper Bands	Upper	Upper	Under
FR53	103.91	103.87	103.57	103.91	103.67	Neutral	Bearish	Neutral	Upper Bands	Upper	Upper	Under
FR54	112.47	113.28	112.17	113.33	112.30	Neutral	Bullish	Overbought	Upper Bands	Upper	Upper	Under
FR56	106.29	106.81	105.76	106.89	105.81	Neutral	Bullish	Neutral	Upper Bands	Upper	Upper	Upper
FR58	102.00	102.50	101.62	102.50	101.82	Neutral	Bullish	Neutral	Upper Bands	Upper	Upper	Under
FR59	96.63	97.24	96.36	97.29	96.61	Overbought	Bearish	Neutral	Upper Bands	Upper	Upper	Upper
FR64	87.15	88.15	86.69	88.15	87.13	Neutral	Bullish	Overbought	Upper Bands	Upper	Upper	Under
FR66	98.71	98.69	98.60	98.69	98.63	Overbought	Bullish	Neutral	Upper Bands	Upper	Upper	Upper
FR68	103.05	103.65	102.61	103.65	102.75	Overbought	Bullish	Overbought	Upper Bands	Upper	Upper	Under
FR69	102.10	102.10	101.95	102.10	102.01	Neutral	Bullish	Neutral	Upper Bands	Upper	Upper	Under
FR70	104.88	105.38	104.52	105.42	104.63	Neutral	Bullish	Overbought	Upper Bands	Upper	Upper	Under
FR71	108.21	109.38	107.89	109.38	107.93	Neutral	Bullish	Overbought	Upper Bands	Upper	Upper	Under
FR72	102.09	103.04	101.65	103.06	101.97	Overbought	Bullish	Neutral	Upper Bands	Upper	Under	Under
FR73	107.47	108.70	106.75	108.71	106.75	Neutral	Bullish	Overbought	Upper Bands	Upper	Upper	Under
ORI13	98.21	98.44	98.07	98.44	98.15	Overbought	Bullish	Neutral	Middle Bands	Upper	Upper	Upper
ORI12	103.62	103.34	103.32	103.62	103.43	Neutral	Bearish	Neutral	Lower Bands	Under	Under	Under
SR06	100.28	100.02	100.11	100.32	100.02	Neutral	Bullish	Neutral	Upper Bands	Under	Under	Under
SR08	102.64	102.55	102.44	102.64	102.48	Neutral	Bearish	Neutral	Upper Bands	Under	Under	Under

Analyst: Lanjar Nafi, lanjar@reliance-securities.com

Source: Reliance Research

### Legend :

- Movement: Bullish and Bearish (Indicator Stochastic)
- Momentum: Oversold, Overbought and Neutral (Indicator RSI)
- Resistance Fractal: Strong Resistance
- Support Fractal: Strong Support
- Green: Good Conditions
- Red: Poor Conditions

## HEAD OFFICE

### Reliance Building

Jl. Pluit Sakti Raya No. 27AB,  
Pluit  
Jakarta 14450  
T. +62 21 661 7768  
F. +62 21 661 9884

## RESEARCH DIVISION

### Robertus Yanuar Hardy

*robertus@reliance-securities.com*

### Rio Adrianus

*rio.adrianus@reliance-securities.com*

### Lanjar Nafi Taulat I

*lanjar@reliance-securities.com*

### Aji Setiawan

*aji@reliance-securities.com*

### Shanti Dwi Jayanti

*santi@reliance-securities.com*

Senior Analyst

Research Analyst

Technical Research Analyst

Associate Research Analyst

Associate Research Analyst

## EQUITY DIVISION

### Jakarta- Pluit

Jl. Pluit Sakti Raya No. 27AB,  
Pluit  
Jakarta 14450  
T. +62 21 661 7768  
F. +62 21 661 9884

### Bandung

Jl.Cisangkuy No.58  
Bandung 40115  
T. +62 22 721 8200  
F. +62 22 721 9255

### Surabaya - Gubeng

Jl. Bangka No. 22  
Surabaya 60281  
T. +62 31 501 1128  
F. +62 31 503 3196

### Makassar

Jl. Boto Lempangan No. 34 J  
Makassar- Sulawesi Selatan  
T. +62 411 3632388  
F. +62 411 3614634

### Jakarta - Sudirman

Menara Batavia Ground Floor  
Jl.KH.Mas Mansyur Kav 126  
Jakarta 10220  
T. +62 21 57905455  
F. +62 21 57950728

### Tasikmalaya

Ruko Tasik Indah Plaza No.21  
Jl. KHZ Mustofa No. 345  
Tasikmalaya 46121  
T. +62 265 345000  
F. +62 265 345003

### Surabaya - Diponegoro

Jl. Diponegoro No.26D  
Surabaya 60261  
T. +62 31 567 0388  
F. +62 31 561 0528

### Medan

Jl. Teuku Amir Hamzah No.40-O  
Medan 20117  
T. +62 61 6638592  
F. +62 61 6638023

### Jakarta - Kebon Jeruk

Plaza Kebon Jeruk  
Jl.Raya Perjuangan Blok A/2  
Jakarta 11530  
T. +62 21 532 4074  
F. +62 21 536 2157

### Malang

Jl. Guntur No. 19  
Malang 65112  
T. +62 341 347 611  
F. +62 341 347 615

### Bali - Denpasar

Dewata Square Blok A3  
Jl. Letda Tantular Renon  
Denpasar 802361  
T. +62 361 225099  
F. +62 361 245099

### Tangerang

Jl. Pahlawan Seribu Ruko BSD  
Sektor 7 Blok RK kav. 9  
Tangerang 15310  
T. +62 21 5387495  
F. +62 21 5387494

### Pekanbaru

Jl. Jendral Sudirman No.73  
Pekanbaru-Riau  
T. +62 761 848414  
F. +62 761 849456

### Pontianak

Jl. MT Haryono No. 6  
Pontianak 78121  
T. +62 561 575674  
F. +62 561 575670

### Jakarta - Centro

Ruko Centro Residence Kav. 4-5  
Tower C Lt. 1 No. 26-29  
Jl. Macan, Daan Mogot  
Jakarta 14450  
T. +62 21 56945227  
F. +62 21 56945226

### Solo

Jl. Slamet Riyadi 330<sup>a</sup>  
Solo 57145  
T. +62 271 736599  
F. +62 271 733478

### Balikpapan

Ruko Bukit Damai Indah  
Blok I, No. 3, Rt.34  
Jl. MT. Haryono, Gunung  
Bahagia, Balikpapan Selatan  
76114  
T. +62 542 746313  
F. +62 542 746317

## IDX CORNER & INVESTMENT GALLERY

### President University

Resto Plaza 1F - Jababeka  
Education Park  
Jl. Ki Hajar Dewantara Raya  
Cikarang - Bekasi 17550  
T. +62 21 89106030

### Universitas Siliwangi Tasikmalaya

Jl. Siliwangi No. 24  
Tasikmalaya 46151  
T. +62 265 323685  
F. +62 265 323534

### Politeknik Kediri

Jl. Mayor Bismo No. 27  
Kediri 64121  
T. +62 354 683128  
F. +62 354 683128

### Universitas Muhammadiyah Sidoarjo

Jl. Majapahit 666 B  
Sidoarjo, Jawa Timur  
T. +62 31 8945444  
F. +62 31 8949333

### Universitas Tanjungpura Pontianak

Jl. Jendral Ahmad Yani  
Pontianak 78124  
T. +62 561 743465  
F. +62 561 766840

### Universitas Pesantren Tinggi Darul Ulum

Kompleks Pp Darul Ulu,  
Peterongan  
Jombang, Jawa Timur 60281  
T. +62 321 873655  
F. +62 321 875771

### STIE "AUB" Surakarta

Jl. Mr. Sartono 97, Cengklik  
Nusukan, Surakarta 57135  
T. +62 271 854803  
F. +62 271 853084

### Universitas Surabaya

Jl. Raya Kalirungkut  
Surabaya 60293  
T. +62 31 298 1203  
F. +62 31 298 1204

### Universitas Muhammadiyah Gresik

Jl. Sumatra 101 GKB  
Gresik 61121  
T. +62 31 395 1414  
F. +62 31 395 2585

### Universitas Negeri Malang

Jl. Surabaya No. 6  
Malang 65145  
T. +62 341 585914  
F. +62 341 55288

### Universitas Muhammadiyah Malang

Jl. Raya Tlogomas 246  
Malang 65144  
T. +62 341 464318-9  
F. +62 341 460782

### FSEI IAIN Antasari

Jl. Ahmad Yani Km. 4,5  
Banjarmasin  
T. + 62 511 3265783

### STIE Malangkececwara

Jl. Terusan Candi Kalasan  
Malang 65142  
T. +62 341 491813  
F. +62 341 495619

### STIESIA Surabaya

Jl. Menur Pumpungan 30  
Surabaya  
T. +62 31 5947505  
F. +62 31 5932218

### Universitas 17 Agustus 1945 Banyuwangi

Jl. Adi Sucipto 26  
Banyuwangi, Jawa Timur  
T. +62 333 419613  
F. +62 333 419163

### STIE Tri Bhakti

Jl. Teuku Umar No. 24  
Cut Meutia Setiakawan,  
Bekasi  
T. +62 21 82429400,  
82429500  
F. +62 271 726156

### Universitas Islam Kalimantan

Jl. Adiyaksa No. 2, Kayu  
Tangi, Banjarmasin  
T. + 62 511 3303871  
F. + 62 511 3303871

### STIKOM Bali

Jalan Puputan No. 86, Renon,  
Denpasar  
T. +62361 244445  
F. +62361 264773

### Universitas Muhammadiyah Pontianak

Fakultas Ekonomi UM  
Pontianak  
Jl. Ahmad Yani, No. 111,  
Pontianak 78124  
T. +62561 743465  
F. +62561 766840

### Universitas Negeri Makassar

Fakultas Ekonomi Gedung BT  
Lt.2  
Jl. A.P. Pettarani, Kampus  
UNM, Gunungsari Baru  
Makassar 90222  
T. +62 411 889464 / 881244  
F. +62 411 887604

### STIE AAS Surakarta

Jl. Slamet Riyadi No. 361,  
Kartasura, Surakarta  
T. +62 271 726156  
F. +62 271 726156

### UPN "Veteran" Yogyakarta

Jl. Babarsari 2, Tambak Bayan  
Yogyakarta  
T. +62 274 485268  
F. +62 274 487147

### Disclaimer:

Information, opinions and recommendations contained in this document are presented by PT Reliance Securities Tbk. from sources that are considered reliable and dependable. This document is not an offer, invitation or any kind of representations to decide to buy or sell stock. Investment decisions taken based on this document is not the responsibility of PT Reliance Securities Tbk. PT Reliance Securities Tbk. reserves the right to change the contents of this document at any time without prior notice.