

## IHSG



5390.68  
-11.71  
-0.22%

Vol (Mn): 8,722  
Val (Bn): 5,250

## LQ45



896.86  
0.56  
0.06%

Sector Indices	Last	Change	Change %
Agriculture	1826.24	(15.48)	(0.85)
Basic Industry	564.06	2.33	0.41
Consumer	2390.80	0.13	0.01
Finance	836.01	(0.51)	(0.06)
Infrastructure	1070.48	(0.40)	(0.04)
Manufacture	1407.39	(2.03)	(0.14)
Mining	1363.90	(29.97)	(2.20)
Misc Industry	1380.31	(17.02)	(1.23)
Property	501.13	(2.90)	(0.58)
Trade	873.90	1.68	0.19

Source: relitrade next G

Most Active	Last	Change %	Freq
SRIL	352	0.6	28,074
TRAM	113	28.4	15,077
TLKM	3,950	(0.3)	7,781
TMPI	72	18.0	7,449
BMTR	530	1.0	6,416

Most Volume	Last	Change %	M share
MYRX	123	(1.6)	24,477
TRAM	113	28.4	10,304
SRIL	352	0.6	8,261
TMPI	72	18.0	4,449
BEKS	54	0.0	2,649

Most Value	Last	Change %	Rp Bil
MYRX	123	(1.6)	303.39
SRIL	352	0.6	288.85
TLKM	3,950	(0.3)	277.57
BBRI	12,075	0.0	183.80
BJBR	2,300	0.4	129.52

Source: relitrade next G

## IHSG Technical Review



R3	5700
R2	5540
R1	5400
Last	5390.68
S1	5280
S2	5175
S3	5100

### Comment:

Pulled back upper Bollinger bands and false break the resistance level.

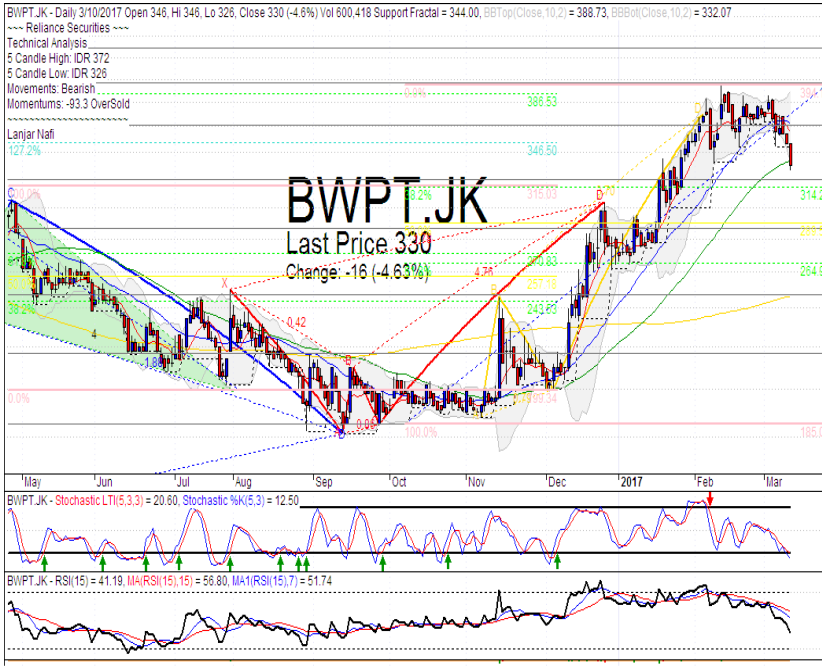
Stochastic, bearish movement after dead-cross at overbought oscillator.

RSI consolidations at middle oscillator.

Long term bullish trend movement.

Stop-loss level if broke the support level at 5380. Downside potential until 5304 (MA50 support level).

## BWPT



R3	428
R2	398
R1	360
Last	330
S1	320
S2	286
S3	246
<b>WAIT</b>	

### Comment:

Bearish movement and arrived at MA50 support level. Waiting for rebound signal.

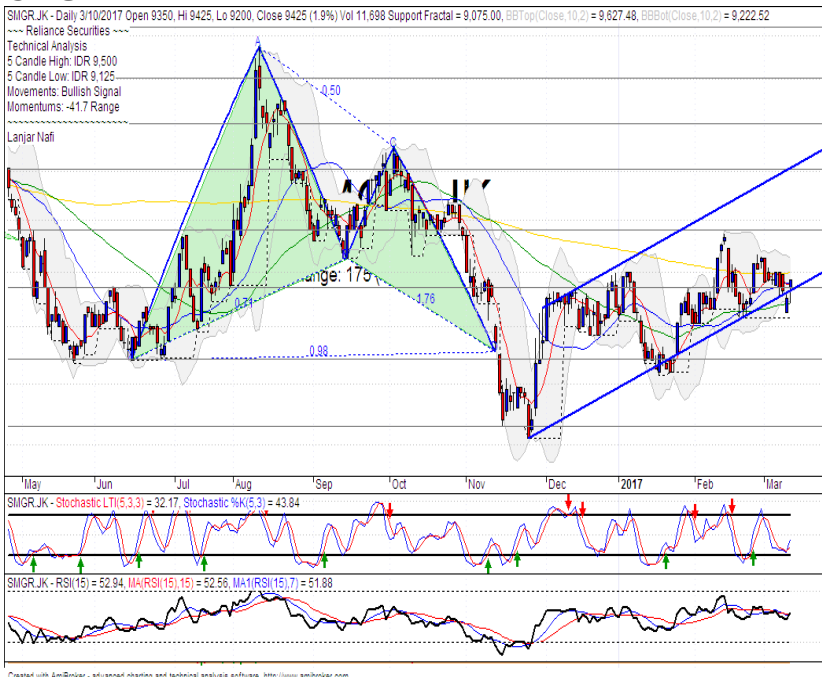
Stochastic, arrived the oversold oscillator with golden-cross indications.

RSI bearish momentum at near oversold oscillator.

Short term bearish trend movement.

Rebound signal if whipsaw MA50 at 336. Stop-loss level at 310 (Broke the 38.2% Fibonacci retracement).

## SMGR



R3	11000
R2	10500
R1	9900
Last	9425
S1	9375
S2	8725
S3	8150
<b>SPECULATIVE BUY</b>	

### Comment:

Whipsaw at bullish trend support level and MA25. Trying to break out the MA200 resistance level.

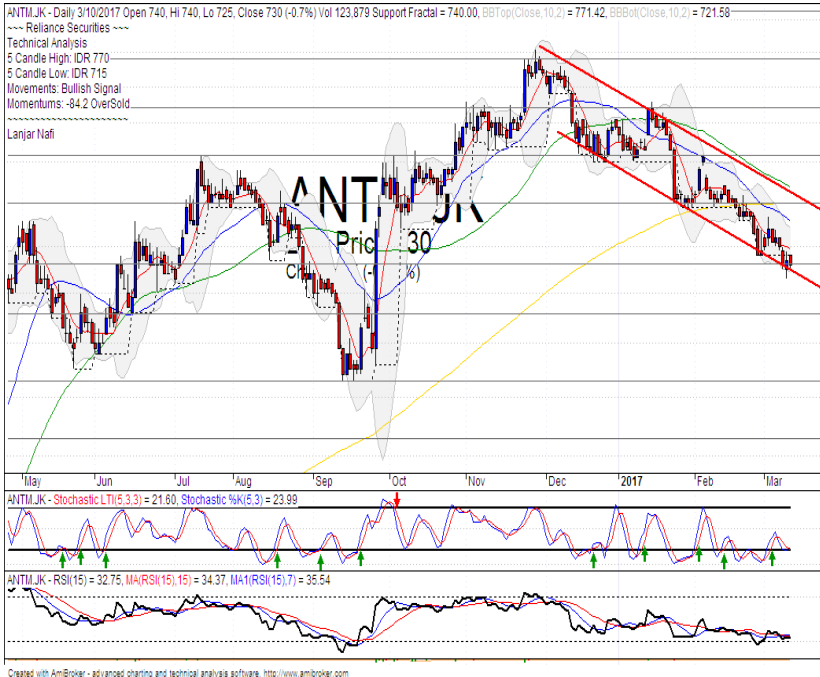
Stochastic Golden-cross at oversold oscillator. Broad upside potential.

RSI bullish reversal momentum at middle oscillator.

Medium term bullish trend movement.

Upside target to channeling bullish trend Resistance target level at 10500. Stop-loss level at 9150 if broke MA25 support level.

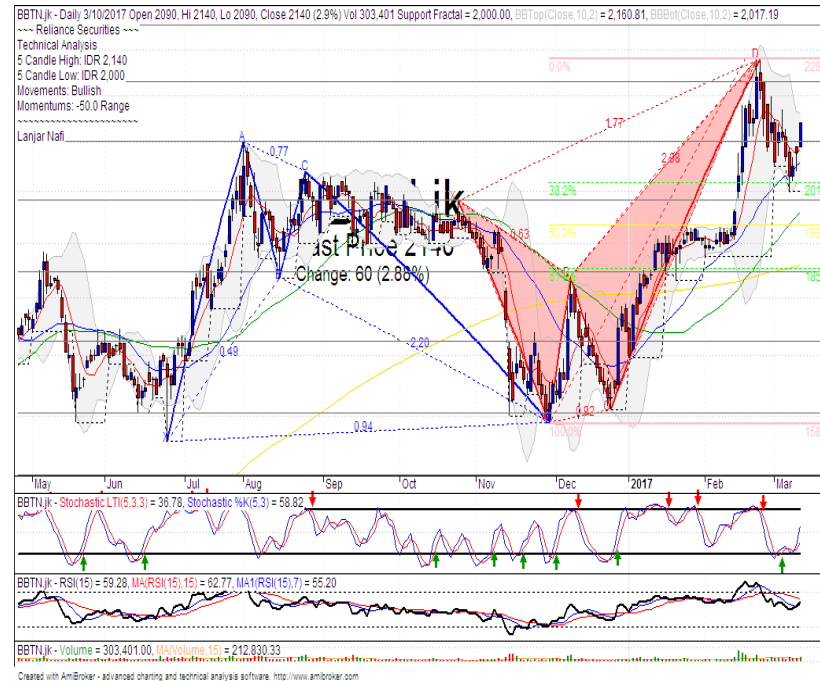
## ANTM



R3	920
R2	860
R1	800
Last	730
S1	730
S2	675
S3	615
<b>TRADING BUY</b>	

**Comment:**  
 Trying to rebounded at support level. Moderate trading volume.  
 Stochastic golden-cross at oversold oscillator. Broad upside potential.  
 RSI consolidations momentum at near oversold oscillator.  
 Short term bearish trend movement.  
 Upside target to bearish trend resistance level at 780. Stop-loss level at 710 if Broke the support level.

## BBTN



R3	2500
R2	2350
R1	2230
Last	2140
S1	2100
S2	1980
S3	1850
<b>HOLD</b>	

**Comment:**  
 Bullish momentum after rebounded MA25 support level. Waiting for reached the target level.  
 Stochastic Golden-cross at oversold oscillator. Broad upside potential.  
 RSI bullish momentum at near oversold oscillator.  
 Medium term bullish trend movement.  
 Upside target to 2230. Stop-loss level if broke the support level 2090.

Stocks	S2	S1	Closing Price	R1	R2	Technical Notes	Rec	Stop Loss	Rec Buy Prc	Target Price
<b>Plantation</b>										
AALI	14,000	14,900	15,200	15,850	16,700	Pulled back bearish trend	PS	14,800		
LSIP	1,330	1,400	1,470	1,475	1,545	Consolidations	W	1,450		
<b>Mining</b>										
INCO	2,120	2,300	2,320	2,500	2,670	Bearish momentum	S	2,270		
<b>Consumer</b>										
UNVR	39,800	41,000	42,300	42,500	44,000	Overbought	PS	42,000		
INDF	7,250	7,900	7,925	8,500	9,125	Sideways	W	7,850		
KLBF	1,370	1,420	1,470	1,485	1,540	Broke support level	W	1,410		
<b>Trading</b>										
ACES	710	755	800	810	870	Broke resistance level	TB	750		840
AKRA	6,100	6,100	6,125	6,350	6,600	Bullish engulfing	TB	6,000		6,500
UNTR	24,000	25,325	25,750	26,750	28,175	Stoch dead-cross	S	25,300		
<b>Property &amp; Construction</b>										
LPCX	4,580	4,600	4,460	4,820	5,125	Oversold	W	4,580		
WIKA	2,200	2,400	2,470	2,600	2,800	Sideways	TB	2,390		2,680
BSDE	1,630	1,720	1,760	1,830	1,935	Bullish meeting line	SB	1,700		1,860
WSKT	2,260	2,410	2,390	2,600	2,800	Consolidations at support level	SB	2,380	2,410	2,600
ADHI	2,200	2,300	2,250	2,410	2,540	Pulled back MA200	S	2,280		
<b>Basic Industry &amp; Chemical</b>										
SMGR	8,150	8,725	9,425	9,350	9,900	Consolidations	W	9,100		
CPIN	2,850	3,000	3,150	3,210	3,400	Consolidations	TB	3,150		3,480
MAIN	1,050	1,180	1,215	1,300	1,400	Oversold	W	1,200		
INTP	14,600	14,600	15,475	15,500	16,350	Consolidations	W	15,300		
<b>Miscellaneous</b>										
SRIL	315	350	352	400	450	Bearish momentum	PS	380		
ASII	7,850	8,250	8,150	8,650	9,000	Consolidations	W	8,200		
<b>Finance</b>										
BBTN	1,850	1,980	2,140	2,100	2,200	Rebounded at MA25	SB	1,970	2,070	2,200
BMRI	10,750	11,000	11,400	11,450	11,800	Consolidations	W	11,000		
BTPN	2,340	2,550	2,700	2,770	3,000	Pulled back bearish trend	PS	2,600		
BJBR	2,140	2,210	2,300	2,470	2,760	Sideways	TB	2,200		2,570
BBRI	11,100	11,725	12,075	12,300	13,000	Sideways	TB	11,700		12,300
<b>Infrastructure</b>										
TLKM	3,710	3,950	3,950	4,200	4,400	Overbought	PS	3,920		
PGAS	2,360	2,560	2,710	2,800	3,050	Consolidations	PS	2,700		

Source : Reliance Securities

### Analyst Conclusions:

The index rebounded at support level but having limited momentum.

Legend :

- B: BUY (allocate till 100% of the weighted capital to accumulate, higher than 50% upside probability)
- SB: SPECULATIVE BUY (allocate 25%-50% of the weighted capital to accumulate, 25%-50% upside probability)
- W: WAIT (wait for proper entry level, do the stop-loss if necessary)
- H: HOLD (hold the portfolio position, aim for the best price to distribute)
- PS: PARTIAL SELL (distribute 25%-50% part of the portfolio, 25%-50% downside probability)
- S: SELL (distribute till 100% of the portfolio, higher than 50% downside probability)
- TB: TRADING BUY (short term or intraday trading within a tight trading range. Highly speculative).

Ticker	Resistance Fractal	Price 3/10/2017	Support Fractal	Weekly High	Weekly Low	Indicator			Moving Average			
						Stochastic	RSI	B. Band	25 Days	50 Days	200 Days	
AALIJK	15,400	15,200	15,050	15,400	15,250	Neutral	Bearish	Neutral	Middle Bands	Under	Under	Under
ACESJK	795	800	745	805	760	Neutral	Bullish	Neutral	Upper Bands	Upper	Upper	Under
ADHIJK	2,400	2,250	2,080	2,400	2,300	Neutral	Bearish	Neutral	Middle Bands	Upper	Upper	Under
ADROJK	1,755	1,600	1,665	1,755	1,695	Neutral	Bearish	Neutral	Lower Bands	Under	Under	Upper
AISAJK	2,220	2,180	1,950	2,220	2,190	Neutral	Bearish	Neutral	Middle Bands	Upper	Upper	Upper
AKRAJK	6,850	6,125	6,150	6,375	6,225	Neutral	Bullish	Neutral	Middle Bands	Under	Under	Under
ANTMJK	785	730	740	770	740	Neutral	Bullish	Neutral	Middle Bands	Under	Under	Under
APLNJK	234	224	222	228	228	Neutral	Bearish	Neutral	Middle Bands	Under	Under	Under
ASIIJK	8,575	8,150	7,850	8,575	8,275	Neutral	Bearish	Neutral	Middle Bands	Under	Upper	Upper
ASRIJK	378	366	362	378	370	Neutral	Bearish	Neutral	Middle Bands	Under	Under	Under
BBCAJK	15,675	15,625	15,350	15,700	15,475	Neutral	Bullish	Neutral	Upper Bands	Upper	Upper	Upper
BBKPKJ	620	605	605	620	610	Neutral	Bearish	Neutral	Middle Bands	Under	Under	Under
BBNIJK	6,375	6,300	6,250	6,425	6,300	Neutral	Bearish	Neutral	Middle Bands	Upper	Upper	Upper
BBRIJK	12,025	12,075	11,850	12,150	11,950	Neutral	Bearish	Neutral	Upper Bands	Upper	Upper	Upper
BBTNJK	2,170	2,140	2,000	2,140	2,070	Neutral	Bullish	Neutral	Middle Bands	Upper	Upper	Upper
BDMNJK	4,900	4,850	4,700	4,900	4,800	Neutral	Bullish	Neutral	Middle Bands	Upper	Upper	Upper
BHITJK	140	130	128	140	131	OverSold	Bearish	Neutral	Middle Bands	Under	Under	Under
BJBRJK	2,340	2,300	2,210	2,450	2,290	Neutral	Bearish	Neutral	Upper Bands	Under	Under	Upper
BJTMJK	575	560	550	570	560	Neutral	Bullish	Neutral	Middle Bands	Under	Under	Upper
BKSIJK	99	92	93	96	94	OverSold	Bullish	Neutral	Middle Bands	Under	Under	Under
BMRIJK	11,450	11,400	11,200	11,400	11,350	Neutral	Bullish	Neutral	Upper Bands	Upper	Upper	Upper
BMTRJK	630	530	515	555	530	Neutral	Bearish	Neutral	Middle Bands	Under	Under	Under
BSDEJK	1,805	1,760	1,745	1,805	1,770	Neutral	Bearish	Neutral	Middle Bands	Under	Under	Under
BTPNJK	2,840	2,700	2,700	2,790	2,750	Neutral	Bearish	Neutral	Middle Bands	Upper	Upper	Upper
BWPTJK	386	330	344	372	346	Neutral	Bearish	Neutral	Lower Bands	Under	Under	Upper
CMNPJK	1,490	1,465	1,465	1,485	1,470	OverSold	Bullish	Neutral	Lower Bands	Under	Under	Under
CPINJK	3,230	3,150	3,060	3,230	3,110	Neutral	Bullish	Neutral	Middle Bands	Under	Under	Under
CSAPJK	515	498	494	498	498	Neutral	Bullish	Neutral	Middle Bands	Under	Under	Upper
CTRAJK	1,405	1,255	1,265	1,305	1,295	Neutral	Bearish	Neutral	Middle Bands	Under	Under	Under
DILDJK	510	438	436	454	442	Neutral	Bullish	OverSold	Middle Bands	Under	Under	Under
EXCLJK	3,090	2,980	2,810	2,990	2,870	Neutral	Bullish	Neutral	Middle Bands	Under	Upper	Upper
GGRMJK	62,850	63,500	62,150	64,425	63,475	Neutral	Bullish	Neutral	Middle Bands	Upper	Upper	Under
GIAAJK	356	342	338	346	344	Neutral	Bullish	Neutral	Middle Bands	Under	Under	Under
QJTLJK	1,260	1,165	1,135	1,260	1,215	Neutral	Bearish	Neutral	Middle Bands	Upper	Upper	Under
HEXAJK	4,250	3,930	3,750	4,060	3,900	Neutral	Bearish	Neutral	Middle Bands	Upper	Upper	Upper
HRUMJK	2,460	2,210	2,130	2,460	2,360	Neutral	Bearish	Neutral	Middle Bands	Upper	Upper	Upper
ICBPKJ	8,475	8,150	8,075	8,305	8,225	Neutral	Bearish	Neutral	Lower Bands	Under	Under	Under
IMASJK	1,310	1,280	1,260	1,310	1,275	Neutral	Bearish	Neutral	Middle Bands	Under	Under	Under
INCOJK	2,580	2,320	2,480	2,580	2,380	OverSold	Bearish	Neutral	Middle Bands	Under	Under	Under
INDFJK	8,175	7,925	7,950	8,100	8,000	Neutral	Bearish	Neutral	Lower Bands	Under	Under	Upper
INDYJK	775	700	720	775	725	Neutral	Bearish	Neutral	Lower Bands	Under	Under	Upper
INTAJK	354	374	328	398	346	Neutral	Bullish	OverBought	Upper Bands	Upper	Upper	Upper
INTPKJ	15,775	15,475	15,325	15,650	15,475	Neutral	Bullish	Neutral	Middle Bands	Under	Upper	Under
ITMGJK	18,150	16,300	14,950	17,600	17,250	Neutral	Bullish	Neutral	Middle Bands	Under	Upper	Upper
JPFAJK	1,775	1,610	1,620	1,755	1,650	Neutral	Bearish	Neutral	Middle Bands	Under	Under	Upper
JSMRJK	4,280	4,440	4,660	4,690	4,560	OverSold	Bullish	Neutral	Middle Bands	Under	Under	Under
KUJAJK	312	318	294	320	316	OverBought	Bearish	OverBought	Middle Bands	Upper	Upper	Upper
KLBFJK	1,550	1,470	1,460	1,530	1,475	Neutral	Bearish	Neutral	Middle Bands	Under	Under	Under
KRASJK	745	665	660	715	675	OverSold	Bearish	Neutral	Lower Bands	Under	Under	Under
LPCKJK	5,425	4,460	4,600	4,650	4,530	OverSold	Bearish	OverSold	Lower Bands	Under	Under	Under
LPKRJK	740	725	705	740	730	Neutral	Bullish	Neutral	Middle Bands	Under	Under	Under
LPPFJK	13,375	13,200	11,175	13,375	13,150	Neutral	Bearish	Neutral	Middle Bands	Under	Under	Under
LSIPJK	1,560	1,470	1,470	1,545	1,490	Neutral	Bearish	Neutral	Middle Bands	Under	Under	Under
MAINJK	1,270	1,215	1,210	1,270	1,235	OverSold	Bearish	Neutral	Middle Bands	Under	Under	Under
MAPJKJ	5,550	5,475	5,200	5,600	5,375	Neutral	Bullish	Neutral	Middle Bands	Under	Upper	Upper
MASAJK	248	214	200	228	214	Neutral	Bearish	Neutral	Middle Bands	Under	Under	Under
MNCNJK	1,690	1,735	1,610	1,735	1,655	Neutral	Bullish	Neutral	Upper Bands	Upper	Upper	Under
MPPAJK	1,240	1,190	1,180	1,240	1,210	Neutral	Bearish	Neutral	Middle Bands	Under	Under	Under
MTLAJK	334	330	320	334	320	Neutral	Bullish	OverBought	Middle Bands	Upper	Upper	Upper
MYORJK	2,110	2,200	2,010	2,250	2,130	OverBought	Bearish	OverBought	Middle Bands	Upper	Upper	Upper
PGASJK	2,890	2,710	2,750	2,850	2,720	Neutral	Bearish	Neutral	Middle Bands	Under	Under	Under
PTBAJK	11,375	10,375	10,750	11,100	10,775	OverSold	Bearish	Neutral	Lower Bands	Under	Under	Under
RALSJK	1,230	1,195	1,075	1,230	1,160	Neutral	Bullish	Neutral	Middle Bands	Under	Under	Upper
ROTIJK	1,600	1,450	1,535	1,550	1,495	Neutral	Bearish	OverSold	Lower Bands	Under	Under	Under
SCMAJK	2,820	2,710	2,720	2,820	2,760	Neutral	Bearish	Neutral	Middle Bands	Under	Under	Under
SGROJK	2,080	1,990	1,990	2,050	2,040	Neutral	Bearish	Neutral	Lower Bands	Under	Upper	Upper
SIMPJK	665	580	505	665	560	Neutral	Bearish	Neutral	Middle Bands	Upper	Upper	Upper
SMCBJK	920	915	900	920	915	Neutral	Bullish	Neutral	Middle Bands	Upper	Upper	Under
SMGRJK	9,675	9,425	9,075	9,500	9,325	Neutral	Bullish	Neutral	Middle Bands	Upper	Upper	Under
SMRAJK	1,400	1,360	1,345	1,400	1,365	Neutral	Bearish	Neutral	Middle Bands	Under	Upper	Under
SRILJK	496	352	272	496	364	Neutral	Bearish	Neutral	Middle Bands	Upper	Upper	Upper
SSIAJK	590	560	540	590	575	Neutral	Bearish	Neutral	Middle Bands	Under	Upper	Under
SSMSJK	1,665	1,480	1,375	1,510	1,405	Neutral	Bullish	Neutral	Middle Bands	Under	Under	Under
TLKMJK	3,900	3,950	3,810	3,990	3,920	OverBought	Bearish	Neutral	Upper Bands	Upper	Upper	Under
TOTLJK	840	815	810	830	820	Neutral	Bullish	Neutral	Middle Bands	Upper	Upper	Upper
UNTRJK	26,600	25,750	23,750	26,600	25,900	Neutral	Bearish	Neutral	Middle Bands	Upper	Upper	Upper
UNVRJK	42,500	42,300	41,825	42,500	42,400	OverBought	Bearish	Neutral	Middle Bands	Upper	Upper	Under

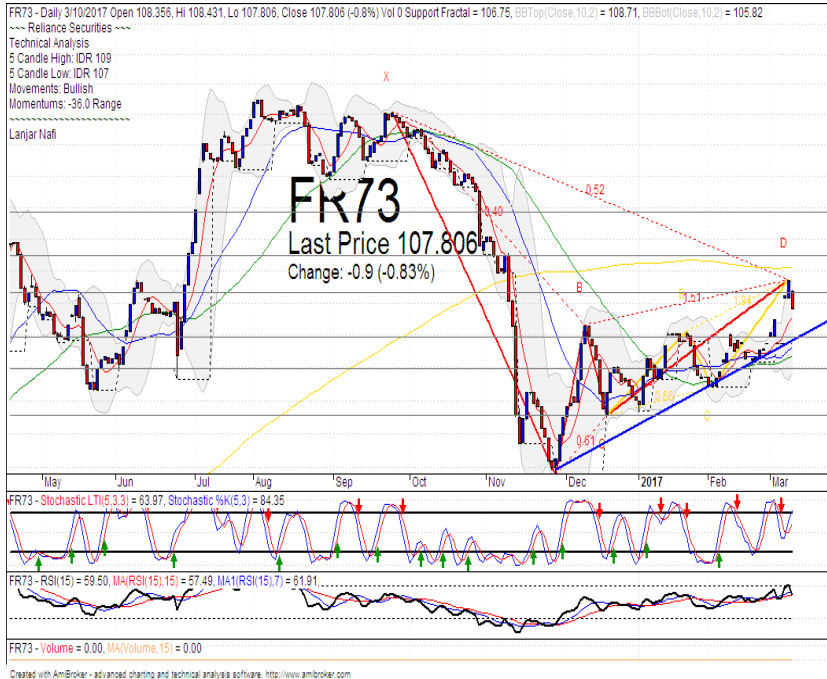
Source : Reliance Research

### Legend :

- Movement: Bullish and Bearish (Indicator Stochastic)
- Momentum: Oversold, Overbought and Neutral (Indicator RSI)
- Resistance Fractal: Strong Resistance
- Support Fractal: Strong Support
- Green: Good Conditions
- Red: Poor Conditions



## FR 73



R3	110.87
R2	109.51
R1	108.34
Last	107.80
S1	106.94
S2	106.01
S3	104.60
<b>SELL</b>	

**Comment:**  
 Pulled back MA200 resistance level. Reversal signal.

Stochastic indications at dead-cross overbought oscillator.

RSI bearish reversal momentum at overbought.

Medium term bullish trend movement.

Stop-loss level at 107.50 (Broke the MA7 support level).  
 Downside potential until 106.34 (MA50 support level).

## Indonesian Technical Bond

Ticker	Resistance		Price		Support		Weekly		Weekly		Indicator			Moving Average		
	Fractal	3/10/2017	Fractal	3/10/2017	High	Low	Stochastic	RSI	B. Band	25 Days	50 Days	200 Days				
FR34	120.37	120.10	120.05	120.36	120.19	Neutral	Bearish	Neutral	Upper Bands	Under	Upper	Under				
FR43	112.62	112.63	112.33	113.02	112.47	Neutral	Bearish	Neutral	Upper Bands	Upper	Upper	Under				
FR47	115.82	116.56	115.44	117.00	115.86	Overbought	Bearish	Neutral	Upper Bands	Upper	Upper	Under				
FR53	103.91	103.57	103.57	103.91	103.62	Neutral	Bearish	Neutral	Upper Bands	Under	Upper	Under				
FR54	112.47	112.99	112.17	113.33	112.47	Overbought	Bullish	Neutral	Upper Bands	Upper	Upper	Under				
FR56	106.29	105.78	105.76	106.89	105.81	Neutral	Bullish	Neutral	Middle Bands	Upper	Upper	Upper				
FR58	102.00	102.24	101.62	102.53	101.82	Neutral	Bullish	Neutral	Upper Bands	Upper	Upper	Under				
FR59	96.63	96.62	96.36	97.29	96.63	Overbought	Bearish	Neutral	Upper Bands	Upper	Upper	Upper				
FR64	87.15	87.87	86.69	88.15	87.13	Neutral	Bullish	Neutral	Upper Bands	Upper	Upper	Under				
FR66	98.71	98.79	98.60	98.81	98.63	Overbought	Bullish	Overbought	Upper Bands	Upper	Upper	Upper				
FR68	103.05	102.95	102.61	103.65	103.05	Overbought	Bearish	Neutral	Upper Bands	Upper	Upper	Under				
FR69	102.10	102.14	101.95	102.14	102.01	Neutral	Bullish	Neutral	Upper Bands	Upper	Upper	Under				
FR70	104.88	104.68	104.52	105.42	104.67	Neutral	Bearish	Neutral	Upper Bands	Upper	Upper	Under				
FR71	108.21	108.93	107.89	109.43	107.93	Neutral	Bullish	Neutral	Upper Bands	Upper	Upper	Under				
FR72	102.09	102.11	101.65	103.06	102.09	Overbought	Bearish	Neutral	Middle Bands	Upper	Under	Under				
FR73	107.47	107.81	106.75	108.71	106.75	Neutral	Bullish	Neutral	Upper Bands	Upper	Upper	Under				
ORI13	98.21	98.44	98.07	98.44	98.15	Overbought	Bullish	Neutral	Middle Bands	Upper	Upper	Upper				
ORI12	103.62	103.33	103.32	103.62	103.34	Neutral	Bearish	Neutral	Lower Bands	Under	Under	Under				
SR06	100.28	100.03	100.11	100.45	100.08	Neutral	Bullish	Neutral	Upper Bands	Under	Under	Under				
SR08	102.64	102.48	102.44	102.64	102.50	Neutral	Bearish	Neutral	Lower Bands	Under	Under	Under				

Analyst: Lanjar Nafi, [lanjar@reliance-securities.com](mailto:lanjar@reliance-securities.com)

Source: Reliance Research

### Legend :

- Movement: Bullish and Bearish (Indicator Stochastic)
- Momentum: Oversold, Overbought and Neutral (Indicator RSI)
- Resistance Fractal: Strong Resistance
- Support Fractal: Strong Support
- Green: Good Conditions
- Red: Poor Conditions

## HEAD OFFICE

### Reliance Building

Jl. Pluit Sakti Raya No. 27AB,  
Pluit  
Jakarta 14450  
T. +62 21 661 7768  
F. +62 21 661 9884

## RESEARCH DIVISION

### Robertus Yanuar Hardy

*robertus@reliance-securities.com*

### Rio Adrianus

*rio.adrianus@reliance-securities.com*

### Lanjar Nafi Taulat I

*lanjar@reliance-securities.com*

### Aji Setiawan

*aji@reliance-securities.com*

### Shanti Dwi Jayanti

*santi@reliance-securities.com*

Senior Analyst

Research Analyst

Technical Research Analyst

Associate Research Analyst

Associate Research Analyst

## EQUITY DIVISION

### Jakarta- Pluit

Jl. Pluit Sakti Raya No. 27AB,  
Pluit  
Jakarta 14450  
T. +62 21 661 7768  
F. +62 21 661 9884

### Bandung

Jl.Cisangkuy No.58  
Bandung 40115  
T. +62 22 721 8200  
F. +62 22 721 9255

### Surabaya - Gubeng

Jl. Bangka No. 22  
Surabaya 60281  
T. +62 31 501 1128  
F. +62 31 503 3196

### Makassar

Jl. Boto Lempangan No. 34 J  
Makassar- Sulawesi Selatan  
T. +62 411 3632388  
F. +62 411 3614634

### Jakarta - Sudirman

Menara Batavia Ground Floor  
Jl.KH.Mas Mansyur Kav 126  
Jakarta 10220  
T. +62 21 57905455  
F. +62 21 57950728

### Tasikmalaya

Ruko Tasik Indah Plaza No.21  
Jl. KHZ Mustofa No. 345  
Tasikmalaya 46121  
T. +62 265 345000  
F. +62 265 345003

### Surabaya - Diponegoro

Jl. Diponegoro No.26D  
Surabaya 60261  
T. +62 31 567 0388  
F. +62 31 561 0528

### Medan

Jl. Teuku Amir Hamzah No.40-O  
Medan 20117  
T. +62 61 6638592  
F. +62 61 6638023

### Jakarta - Kebon Jeruk

Plaza Kebon Jeruk  
Jl.Raya Perjuangan Blok A/2  
Jakarta 11530  
T. +62 21 532 4074  
F. +62 21 536 2157

### Malang

Jl. Guntur No. 19  
Malang 65112  
T. +62 341 347 611  
F. +62 341 347 615

### Bali - Denpasar

Dewata Square Blok A3  
Jl. Letda Tantular Renon  
Denpasar 802361  
T. +62 361 225099  
F. +62 361 245099

### Tangerang

Jl. Pahlawan Seribu Ruko BSD  
Sektor 7 Blok RK kav. 9  
Tangerang 15310  
T. +62 21 5387495  
F. +62 21 5387494

### Pekanbaru

Jl. Jendral Sudirman No.73  
Pekanbaru-Riau  
T. +62 761 848414  
F. +62 761 849456

### Pontianak

Jl. MT Haryono No. 6  
Pontianak 78121  
T. +62 561 575674  
F. +62 561 575670

### Jakarta - Centro

Ruko Centro Residence Kav. 4-5  
Tower C Lt. 1 No. 26-29  
Jl. Macan, Daan Mogot  
Jakarta 14450  
T. +62 21 56945227  
F. +62 21 56945226

### Solo

Jl. Slamet Riyadi 330<sup>a</sup>  
Solo 57145  
T. +62 271 736599  
F. +62 271 733478

### Balikpapan

Ruko Bukit Damai Indah  
Blok I, No. 3, Rt.34  
Jl. MT. Haryono, Gunung  
Bahagia, Balikpapan Selatan  
76114  
T. +62 542 746313  
F. +62 542 746317

## IDX CORNER & INVESTMENT GALLERY

### President University

Resto Plaza 1F - Jababeka  
Education Park  
Jl. Ki Hajar Dewantara Raya  
Cikarang - Bekasi 17550  
T. +62 21 89106030

### Universitas Siliwangi Tasikmalaya

Jl. Siliwangi No. 24  
Tasikmalaya 46151  
T. +62 265 323685  
F. +62 265 323534

### Politeknik Kediri

Jl. Mayor Bismo No. 27  
Kediri 64121  
T. +62 354 683128  
F. +62 354 683128

### Universitas Muhammadiyah Sidoarjo

Jl. Majapahit 666 B  
Sidoarjo, Jawa Timur  
T. +62 31 8945444  
F. +62 31 8949333

### Universitas Tanjungpura Pontianak

Jl. Jendral Ahmad Yani  
Pontianak 78124  
T. +62 561 743465  
F. +62 561 766840

### Universitas Pesantren Tinggi Darul Ulum

Kompleks Pp Darul Ulu,  
Peterongan  
Jombang, Jawa Timur 60281  
T. +62 321 873655  
F. +62 321 875771

### STIE "AUB" Surakarta

Jl. Mr. Sartono 97, Cengklik  
Nusukan, Surakarta 57135  
T. +62 271 854803  
F. +62 271 853084

### Universitas Surabaya

Jl. Raya Kalirungkut  
Surabaya 60293  
T. +62 31 298 1203  
F. +62 31 298 1204

### Universitas Muhammadiyah Gresik

Jl. Sumatra 101 GKB  
Gresik 61121  
T. +62 31 395 1414  
F. +62 31 395 2585

### Universitas Negeri Malang

Jl. Surabaya No. 6  
Malang 65145  
T. +62 341 585914  
F. +62 341 55288

### Universitas Muhammadiyah Malang

Jl. Raya Tlogomas 246  
Malang 65144  
T. +62 341 464318-9  
F. +62 341 460782

### FSEI IAIN Antasari

Jl. Ahmad Yani Km. 4,5  
Banjarmasin  
T. + 62 511 3265783

### STIE Malangkececwara

Jl. Terusan Candi Kalasan  
Malang 65142  
T. +62 341 491813  
F. +62 341 495619

### STIESIA Surabaya

Jl. Menur Pumpungan 30  
Surabaya  
T. +62 31 5947505  
F. +62 31 5932218

### Universitas 17 Agustus 1945 Banyuwangi

Jl. Adi Sucipto 26  
Banyuwangi, Jawa Timur  
T. +62 333 419613  
F. +62 333 419163

### STIE Tri Bhakti

Jl. Teuku Umar No. 24  
Cut Meutia Setiakawan,  
Bekasi  
T. +62 21 82429400,  
82429500  
F. +62 271 726156

### Universitas Islam Kalimantan

Jl. Adiyaksa No. 2, Kayu  
Tangi, Banjarmasin  
T. + 62 511 3303871  
F. + 62 511 3303871

### STIKOM Bali

Jalan Puputan No. 86, Renon,  
Denpasar  
T. +62361 244445  
F. +62361 264773

### Universitas Muhammadiyah Pontianak

Fakultas Ekonomi UM  
Pontianak  
Jl. Ahmad Yani, No. 111,  
Pontianak 78124  
T. +62561 743465  
F. +62561 766840

### Universitas Negeri Makassar

Fakultas Ekonomi Gedung BT  
Lt.2  
Jl. A.P. Pettarani, Kampus  
UNM, Gunungsari Baru  
Makassar 90222  
T. +62 411 889464 / 881244  
F. +62 411 887604

### STIE AAS Surakarta

Jl. Slamet Riyadi No. 361,  
Kartasura, Surakarta  
T. +62 271 726156  
F. +62 271 726156

### UPN "Veteran" Yogyakarta

Jl. Babarsari 2, Tambak Bayan  
Yogyakarta  
T. +62 274 485268  
F. +62 274 487147

### Disclaimer:

Information, opinions and recommendations contained in this document are presented by PT Reliance Securities Tbk. from sources that are considered reliable and dependable. This document is not an offer, invitation or any kind of representations to decide to buy or sell stock. Investment decisions taken based on this document is not the responsibility of PT Reliance Securities Tbk. PT Reliance Securities Tbk. reserves the right to change the contents of this document at any time without prior notice.