

IHSG



5431.59
22.21
0.41%

Vol (Mn): 8,568
Val (Bn): 13,340

LQ45



900.27
3.98
0.44%

Sector Indices	Last	Change	Change %
Agriculture	1827.91	(8.54)	(0.47)
Basic Industry	568.91	(0.77)	(0.14)
Consumer	2406.01	5.38	0.22
Finance	841.30	4.50	0.53
Infrastructure	1088.15	15.50	1.42
Manufacture	1416.73	0.30	0.02
Mining	1387.56	16.26	1.17
Misc Industry	1387.85	(6.75)	(0.49)
Property	498.15	(1.59)	(0.32)
Trade	882.05	4.70	0.53

Source: relitrade next G

Most Active	Last	Change %	Freq
SRIL	334	(2.9)	29,323
PKPK	93	14.8	22,930
TRAM	125	12.6	12,713
SDPC	119	1.7	12,488
TRAM	4,050	2.5	11,228

Most Volume	Last	Change %	M share
MYRX	124	0.8	17,535
SRIL	334	(2.9)	10,720
TRAM	125	12.6	7,057
BUMI	316	(1.9)	4,838
DEWA	72	(1.4)	4,225

Most Value	Last	Change %	Rp Bil
TLKM	4,050	2.5	494.02
SRIL	334	(2.9)	363.94
MYRX	124	0.8	215.68
BBCA	15,675	0.8	195.90
ASII	8,200	(0.6)	176.32

Source: relitrade next G

IHSG Technical Review



R3	5860
R2	5700
R1	5540
Last	5431.59
S1	5400
S2	5280
S3	5175

Comment:

Consolidations at resistance level. Moderate trading volume.

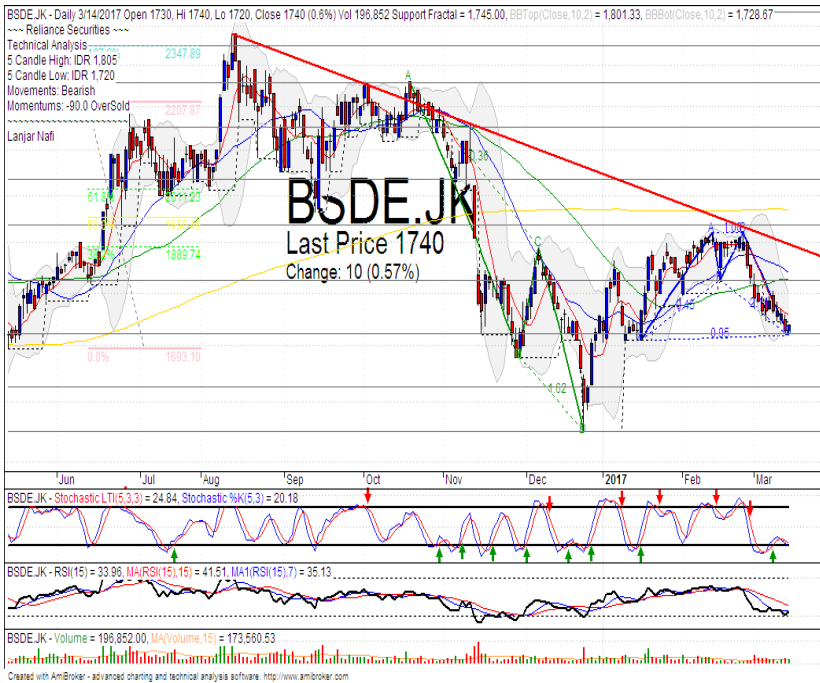
Stochastic, bearish movement after dead-cross at overbought oscillator.

RSI consolidations at middle oscillator.

Short term sideways trend movement.

Stop-loss level if broke the support level at 5380. Downside potential until 5304 (MA50 support level).

BSDE



R3	2030
R2	1930
R1	1825
Last	1740
S1	1720
S2	1625
S3	1550
SPECULATIVE BUY	

Comment:

Bullish harami candlestick pattern at support level. Reversal signal.

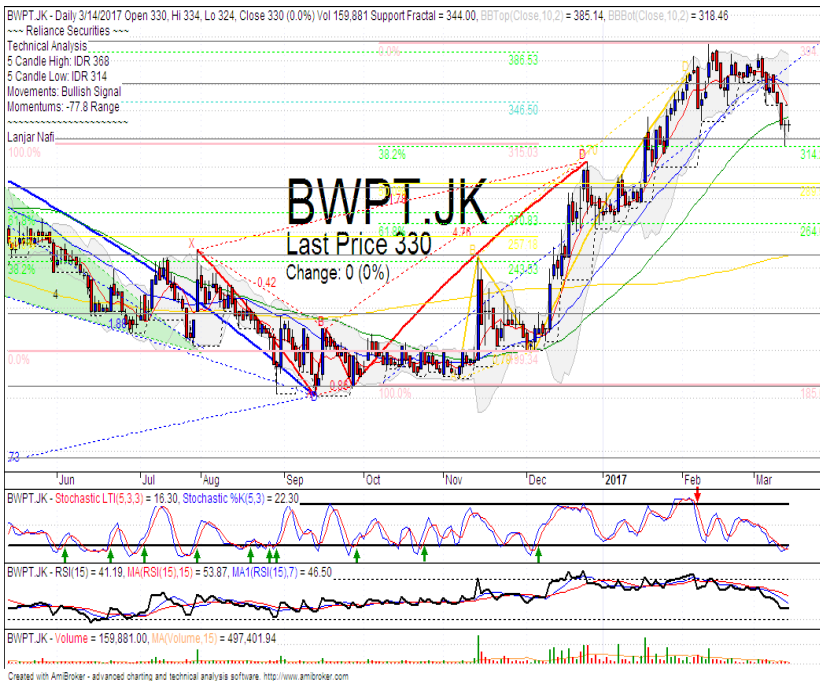
Stochastic, golden-cross at oversold oscillator. Broad upside potential.

RSI bullish reversal momentum at near oversold oscillator.

Long term bearish trend movement.

Upside target to resistance at 1825. Stop-loss level if broke the support level at 1710.

BWPT



R3	430
R2	396
R1	360
Last	330
S1	320
S2	286
S3	246
TRADING BUY	

Comment:

2 star in the south candlestick pattern. Reversal signal at MA50 support level.

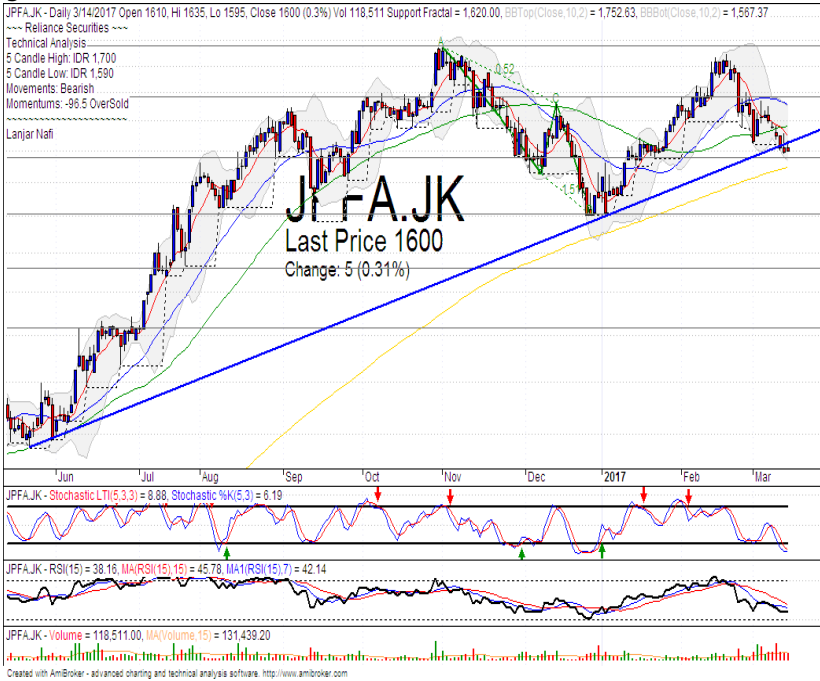
Stochastic golden-cross at oversold oscillator. Broad upside potential.

RSI bullish reversal momentum at middle oscillator.

Short bearish trend movement.

Upside target to MA25 Resistance target level at 316. Stop-loss level at 310 if broke support level.

JPFA



R3	2180
R2	1975
R1	1790
Last	1600
S1	1575
S2	1400
S3	1260

TRADING BUY

Comment:

Bullish homing pigeon candlestick pattern. Reversal signal. Huge trading volume.

Stochastic golden-cross at oversold oscillator. Broad upside potential.

RSI bullish reversal momentum at oversold oscillator.

Long term bullish trend movement.

Upside target to MA25 resistance level at 1760. Stop-loss level at 1560 if Broke the support level.

CTRA



R3	1540
R2	1445
R1	1350
Last	1265
S1	1250
S2	1165
S3	1100

TRADING BUY

Comment:

Bullish harami candlestick pattern at support level. Huge trading volume. Reversal signal.

Stochastic Golden-cross at oversold oscillator. Broad upside potential.

RSI bullish momentum at near oversold oscillator.

Long term bearish trend movement.

Upside target to 1350 (Resistance level). Stop-loss level if broke the support level 1230.

Stocks	S2	S1	Closing Price	R1	R2	Technical Notes	Rec	Stop Loss	Rec Buy Prc	Target Price
Plantation										
AALI	14,000	14,900	15,125	15,850	16,700	Pulled back bearish trend Rebounded at support level	S	14,800		
LSIP	1,400	1,475	1,490	1,545	1,625		SB	1,450	1,480	1,560
Mining										
INCO	2,120	2,300	2,300	2,500	2,670	Oversold	TB	2,270		2,600
Consumer										
UNVR	39,800	41,000	42,200	42,500	44,000	Sideways	W	42,000		
INDF	7,250	7,900	7,925	8,500	9,125	Sideways	W	7,850		
KLBF	1,370	1,420	1,480	1,485	1,540	Consolidations	W	1,410		
Trading										
ACES	710	755	790	810	870	Bearish momentum	PS	750		
AKRA	6,100	6,100	6,275	6,350	6,600	Bullish momentum	B	6,000	6,250	6,500
UNTR	24,000	25,325	25,950	26,750	28,175	Consolidations	H	25,300		26,750
Property & Construction										
LPCK	4,160	4,300	4,370	4,460	4,600	Oversold	W	4,350		
WIKA	2,200	2,400	2,480	2,600	2,800	Sideways	TB	2,390		2,600
BSDE	1,630	1,720	1,740	1,830	1,935	Bullish harami	SB	1,700	1,720	1,860
WSKT	2,120	2,260	2,370	2,410	2,600	Sideways	W	2,250		
ADHI	2,200	2,300	2,330	2,410	2,540	Consolidations	PS	2,280		
Basic Industry & Chemical										
SMGR	8,150	8,725	9,200	9,350	9,900	Consolidations	TB	9,000		9,900
CPIN	2,850	3,000	3,160	3,210	3,400	Consolidations	TB	3,150		3,480
MAIN	1,050	1,180	1,215	1,300	1,400	Oversold	W	1,200		
INTP	14,600	14,600	15,400	15,500	16,350	Consolidations	W	15,300		
Miscellaneous										
SRIL	286	315	334	350	400	Oversold	W	330		
ASII	7,600	7,850	8,200	8,250	9,650	Bullish harami	TB	8,000		8,650
Finance										
BBTN	2,100	2,200	2,260	2,360	2,480	Bullish consolidatiaoas	H	2,230		2,360
BMRI	10,750	11,000	11,425	11,450	11,800	Sideways	H	11,000		11,500
BTPN	2,340	2,550	2,700	2,770	3,000	Bearish momentum	PS	2,600		
BJBR	2,140	2,210	2,250	2,470	2,760	Sideways	W	2,200		
BBRI	11,100	11,725	12,050	12,300	13,000	Sideways	W	11,700		
Infrastructure										
TLKM	3,710	3,950	4,050	4,200	4,400	Overbought	PS	3,920		
PGAS	2,360	2,560	2,710	2,800	3,050	Oversold	TB	2,700		2,900

Source : Reliance Securities

Analyst Conclusions:

The index rebounded at support level but having limited momentum.

Legend :

- B: BUY (allocate till 100% of the weighted capital to accumulate, higher than 50% upside probability)
- SB: SPECULATIVE BUY (allocate 25%-50% of the weighted capital to accumulate, 25%-50% upside probability)
- W: WAIT (wait for proper entry level, do the stop-loss if necessary)
- H: HOLD (hold the portfolio position, aim for the best price to distribute)
- PS: PARTIAL SELL (distribute 25%-50% part of the portfolio, 25%-50% downside probability)
- S: SELL (distribute till 100% of the portfolio, higher than 50% downside probability)
- TB: TRADING BUY (short term or intraday trading within a tight trading range. Highly speculative).

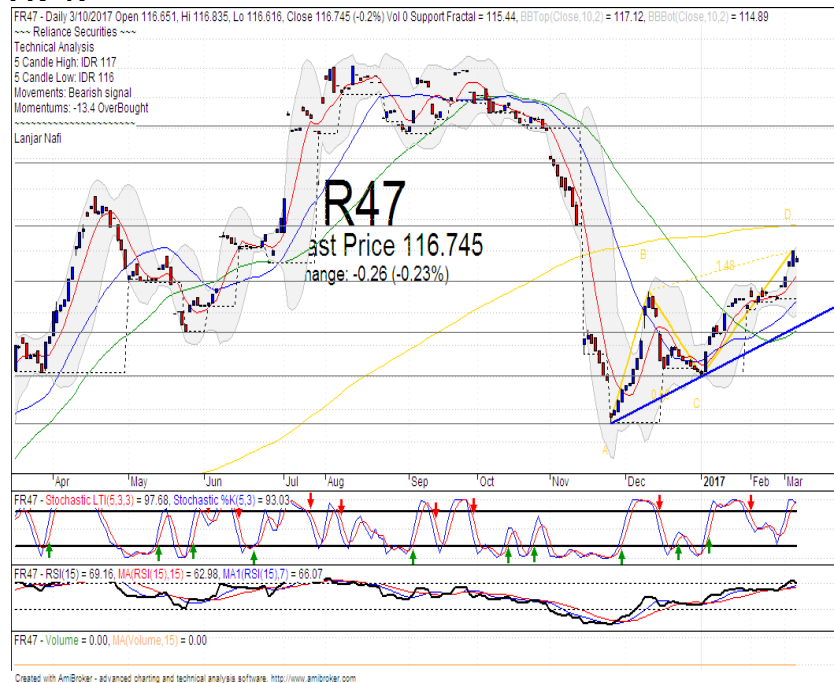
Ticker	Resistance	Price	Support	Weekly	Weekly	Indicator			Moving Average			
	Fractal	3/14/2017	Fractal	High	Low	Stochastic	RSI	B. Band	25 Days	50 Days	200 Days	
AALI.JK	15,400	15,125	15,050	15,375	15,150	Neutral	Bearish	Neutral	Middle Bands	Under	Under	Under
ACES.JK	795	790	745	810	785	Oversold	Bearish	Neutral	Middle Bands	Upper	Upper	Under
ADHI.JK	2,400	2,330	2,230	2,370	2,300	Neutral	Bullish	Neutral	Middle Bands	Upper	Upper	Under
ADRO.JK	1,755	1,645	1,665	1,755	1,645	Neutral	Bullish	Neutral	Middle Bands	Under	Under	Upper
AISA.JK	2,220	2,180	2,100	2,220	2,200	Neutral	Bullish	Neutral	Middle Bands	Upper	Upper	Upper
AKRA.JK	6,850	6,275	6,050	6,325	6,225	Neutral	Bullish	Neutral	Middle Bands	Under	Under	Under
ANTM.JK	785	705	715	750	735	Neutral	Bearish	Oversold	Lower Bands	Under	Under	Under
APLN.JK	234	226	222	240	226	Neutral	Bearish	Neutral	Middle Bands	Under	Upper	Under
ASII.JK	8,575	8,200	8,100	8,550	8,250	Oversold	Bullish	Neutral	Middle Bands	Upper	Upper	Upper
ASRI.JK	378	368	362	376	370	Neutral	Bearish	Neutral	Middle Bands	Under	Under	Under
BBCA.JK	15,675	15,675	15,350	15,900	15,525	Neutral	Bearish	Neutral	Upper Bands	Upper	Upper	Upper
BBKP.JK	620	605	600	620	610	Oversold	Bullish	Neutral	Middle Bands	Under	Under	Under
BBNI.JK	6,375	6,375	6,250	6,450	6,300	Neutral	Bearish	Neutral	Middle Bands	Upper	Upper	Upper
BBRI.JK	12,025	12,050	11,850	12,150	12,125	Neutral	Bearish	Neutral	Middle Bands	Upper	Upper	Upper
BBTN.JK	2,170	2,260	2,000	2,270	2,070	Neutral	Bullish	Neutral	Upper Bands	Upper	Upper	Upper
BDMN.JK	4,900	4,750	4,700	4,900	4,850	Neutral	Bearish	Neutral	Middle Bands	Under	Upper	Upper
BHIT.JK	140	129	128	131	129	Neutral	Bullish	Neutral	Middle Bands	Under	Under	Under
BJBR.JK	2,450	2,250	2,210	2,450	2,280	Neutral	Bearish	Neutral	Lower Bands	Under	Under	Upper
BJTM.JK	575	595	550	600	560	Neutral	Bullish	Neutral	Upper Bands	Upper	Upper	Upper
BKSL.JK	99	89	93	95	91	Oversold	Bearish	Neutral	Lower Bands	Under	Under	Under
BMRI.JK	11,450	11,425	11,200	11,450	11,375	Oversold	Bullish	Neutral	Middle Bands	Upper	Upper	Upper
BMTR.JK	630	515	515	540	525	Neutral	Bearish	Neutral	Middle Bands	Under	Under	Under
BSDE.JK	1,805	1,740	1,745	1,805	1,740	Neutral	Bearish	Neutral	Middle Bands	Under	Under	Under
BTPN.JK	2,840	2,700	2,700	2,760	2,700	Neutral	Bearish	Neutral	Middle Bands	Upper	Upper	Upper
BWPT.JK	386	330	344	368	334	Oversold	Bullish	Neutral	Middle Bands	Under	Under	Upper
CMNP.JK	1,490	1,460	1,460	1,485	1,465	Oversold	Bearish	Neutral	Lower Bands	Under	Under	Under
CPIN.JK	3,210	3,160	3,060	3,210	3,110	Neutral	Bullish	Neutral	Middle Bands	Under	Under	Under
CSAP.JK	515	490	496	498	496	Oversold	Bearish	Neutral	Lower Bands	Under	Under	Upper
CTRA.JK	1,405	1,255	1,265	1,305	1,265	Oversold	Bearish	Neutral	Middle Bands	Under	Under	Under
DILD.JK	510	422	436	450	430	Oversold	Bearish	Oversold	Lower Bands	Under	Under	Under
EXCL.JK	3,090	3,050	2,810	3,060	2,870	Oversold	Bullish	Neutral	Middle Bands	Upper	Upper	Upper
GGRM.JK	62,850	64,475	62,150	64,500	63,475	Neutral	Bullish	Neutral	Middle Bands	Upper	Upper	Under
GAJA.JK	356	340	338	346	344	Neutral	Bearish	Neutral	Middle Bands	Under	Under	Under
GTTL.JK	1,260	1,170	1,135	1,260	1,175	Neutral	Bearish	Neutral	Middle Bands	Upper	Upper	Under
HEXA.JK	4,250	3,970	3,870	4,000	3,900	Neutral	Bullish	Neutral	Middle Bands	Upper	Upper	Upper
HRUM.JK	2,460	2,290	2,130	2,440	2,290	Neutral	Bearish	Neutral	Middle Bands	Upper	Upper	Upper
ICBP.JK	8,475	8,375	8,075	8,475	8,225	Neutral	Bullish	Neutral	Upper Bands	Upper	Under	Under
IMAS.JK	1,310	1,255	1,260	1,310	1,265	Neutral	Bearish	Neutral	Lower Bands	Under	Under	Under
INCO.JK	2,580	2,300	2,480	2,490	2,370	Oversold	Bearish	Neutral	Middle Bands	Under	Under	Under
INDF.JK	8,175	7,925	7,875	8,050	8,000	Neutral	Bearish	Neutral	Lower Bands	Under	Under	Upper
INDY.JK	775	700	720	765	705	Oversold	Bullish	Neutral	Middle Bands	Under	Under	Upper
INTA.JK	398	366	340	398	346	Neutral	Bearish	Neutral	Middle Bands	Upper	Upper	Upper
INTP.JK	15,775	15,400	15,200	15,600	15,475	Neutral	Bullish	Neutral	Middle Bands	Under	Upper	Under
ITMG.JK	17,400	16,800	16,150	17,400	16,600	Neutral	Bullish	Neutral	Middle Bands	Upper	Upper	Upper
JFJA.JK	1,775	1,600	1,620	1,700	1,635	Oversold	Bearish	Neutral	Middle Bands	Under	Under	Upper
JSMR.JK	4,280	4,630	4,430	4,650	4,540	Neutral	Bullish	Neutral	Middle Bands	Under	Upper	Under
KUJA.JK	312	320	316	322	320	Oversold	Bearish	Oversold	Middle Bands	Upper	Upper	Upper
KLBF.JK	1,550	1,480	1,440	1,500	1,475	Neutral	Bullish	Neutral	Middle Bands	Under	Under	Under
KRAS.JK	745	655	660	700	675	Oversold	Bearish	Neutral	Middle Bands	Under	Under	Under
LPCK.JK	5,425	4,370	4,600	4,640	4,390	Oversold	Bearish	Oversold	Lower Bands	Under	Under	Under
LPKR.JK	740	725	715	730	730	Neutral	Bearish	Neutral	Middle Bands	Under	Under	Under
LPPF.JK	13,375	13,150	13,000	13,375	13,200	Neutral	Bearish	Neutral	Middle Bands	Under	Under	Under
LSIP.JK	1,560	1,490	1,470	1,545	1,490	Oversold	Bullish	Neutral	Middle Bands	Under	Under	Under
MAIN.JK	1,270	1,215	1,210	1,270	1,225	Oversold	Bullish	Neutral	Lower Bands	Under	Under	Under
MAPI.JK	5,550	5,575	5,300	5,600	5,500	Neutral	Bullish	Neutral	Middle Bands	Upper	Upper	Upper
MASA.JK	248	218	202	230	214	Neutral	Bullish	Neutral	Middle Bands	Under	Under	Under
MNCN.JK	1,690	1,705	1,610	1,750	1,660	Oversold	Bearish	Neutral	Middle Bands	Upper	Upper	Under
MPPA.JK	1,240	1,145	1,180	1,240	1,185	Oversold	Bearish	Neutral	Lower Bands	Under	Under	Under
MTLA.JK	334	340	320	340	330	Neutral	Bullish	Oversold	Upper Bands	Upper	Upper	Upper
MYOR.JK	2,250	2,120	2,010	2,250	2,140	Neutral	Bearish	Neutral	Middle Bands	Upper	Upper	Upper
PGAS.JK	2,890	2,710	2,680	2,810	2,720	Oversold	Bullish	Neutral	Middle Bands	Under	Under	Under
PTBA.JK	11,375	10,800	10,750	11,075	10,450	Neutral	Bullish	Neutral	Middle Bands	Under	Under	Upper
RALS.JK	1,230	1,150	1,075	1,230	1,180	Neutral	Bearish	Neutral	Middle Bands	Under	Under	Under
ROTI.JK	1,600	1,510	1,440	1,535	1,495	Neutral	Bullish	Neutral	Middle Bands	Under	Under	Under
SCMA.JK	2,820	2,770	2,680	2,820	2,760	Neutral	Bullish	Neutral	Middle Bands	Under	Under	Under
SCRO.JK	2,080	2,000	1,990	2,050	2,000	Neutral	Bearish	Neutral	Middle Bands	Under	Upper	Upper
SIMP.JK	665	575	505	625	585	Neutral	Bearish	Neutral	Middle Bands	Upper	Upper	Upper
SMCB.JK	920	935	900	945	920	Neutral	Bearish	Neutral	Upper Bands	Upper	Upper	Under
SMGR.JK	9,675	9,200	9,125	9,475	9,325	Neutral	Bullish	Neutral	Middle Bands	Under	Under	Under
SMRA.JK	1,400	1,365	1,345	1,390	1,360	Neutral	Bullish	Neutral	Middle Bands	Under	Upper	Under
SRIL.JK	496	334	272	442	358	Oversold	Bearish	Neutral	Middle Bands	Upper	Upper	Upper
SSIA.JK	590	560	540	585	560	Neutral	Bearish	Neutral	Middle Bands	Under	Under	Under
SSMS.JK	1,510	1,480	1,375	1,510	1,415	Neutral	Bullish	Neutral	Middle Bands	Under	Under	Under
TLKM.JK	3,900	4,050	3,880	4,070	3,930	Neutral	Bearish	Neutral	Upper Bands	Upper	Upper	Upper
TOTL.JK	840	810	805	830	815	Neutral	Bearish	Neutral	Lower Bands	Under	Upper	Upper
UNTR.JK	26,600	25,950	25,025	26,300	25,900	Neutral	Bearish	Neutral	Middle Bands	Upper	Upper	Upper
UNVR.JK	42,500	42,200	41,850	42,550	42,400	Neutral	Bearish	Neutral	Middle Bands	Under	Under	Under

Source : Reliance Research

Legend :

- Movement: Bullish and Bearish (Indicator Stochastic)
- Momentum: Oversold, Overbought and Neutral (Indicator RSI)
- Resistance Fractal: Strong Resistance
- Support Fractal: Strong Support
- Green: Good Conditions
- Red: Poor Conditions

FR 47



R3	121.09
R2	119.29
R1	117.87
Last	116.745
S1	116.03
S2	114.42
S3	113.07

SELL

Comment:
 Bearish harami candlestick pattern .Reversal signal.

Stochastic indications at dead-cross overbought oscillator.

RSI bearish reversal momentum at overbought.

Medium term bullish trend movement.

Stop-loss level at 116.20 (Confirmations level). Downside potential until 115.07 (Bullish trend support level).

Indonesian Technical Bond

Ticker	Resistance		Price		Support		Weekly		Weekly		Indicator			Moving Average		
	Fractal	3/14/2017	Fractal	3/14/2017	High	Low	Stochastic	RSI	B. Band	25 Days	50 Days	200 Days				
FR34	120.36	120.27	120.05	120.36	120.19	Neutral	Bearish	Neutral	Upper Bands	Upper	Upper	Under				
FR43	113.02	112.71	112.33	113.02	112.47	Neutral	Bearish	Neutral	Upper Bands	Upper	Upper	Under				
FR47	115.82	116.75	115.44	117.00	115.86	Overbought	Bearish	Overbought	Upper Bands	Upper	Upper	Under				
FR53	103.91	103.94	103.57	103.94	103.62	Neutral	Bullish	Neutral	Upper Bands	Upper	Upper	Under				
FR54	113.33	113.12	112.17	113.33	113.03	Neutral	Bearish	Neutral	Upper Bands	Upper	Upper	Under				
FR56	106.89	106.21	105.76	106.89	106.02	Neutral	Bearish	Neutral	Middle Bands	Upper	Upper	Upper				
FR58	102.00	102.28	101.62	102.53	102.26	Neutral	Bearish	Neutral	Middle Bands	Upper	Upper	Under				
FR59	97.29	97.17	96.52	97.29	96.79	Neutral	Bearish	Neutral	Upper Bands	Upper	Upper	Upper				
FR64	87.15	88.13	86.69	88.20	87.85	Overbought	Bearish	Overbought	Upper Bands	Upper	Upper	Under				
FR66	98.71	98.83	98.60	98.83	98.65	Overbought	Bullish	Overbought	Upper Bands	Upper	Upper	Upper				
FR68	103.65	103.25	102.95	103.65	103.28	Neutral	Bearish	Neutral	Middle Bands	Upper	Upper	Under				
FR69	102.14	102.10	101.95	102.14	102.01	Neutral	Bearish	Neutral	Upper Bands	Upper	Upper	Under				
FR70	105.42	105.12	104.52	105.42	105.01	Neutral	Bearish	Neutral	Upper Bands	Upper	Upper	Under				
FR71	109.43	109.17	108.82	109.43	108.97	Neutral	Bearish	Neutral	Upper Bands	Upper	Upper	Under				
FR72	103.06	102.39	101.65	103.06	102.40	Neutral	Bearish	Neutral	Middle Bands	Upper	Under	Under				
FR73	108.71	108.09	106.75	108.71	107.92	Neutral	Bearish	Neutral	Middle Bands	Upper	Upper	Under				
ORI13	98.21	98.44	98.07	98.44	98.15	Overbought	Bullish	Neutral	Middle Bands	Upper	Upper	Upper				
ORI12	103.62	103.32	103.24	103.45	103.34	Neutral	Bullish	Neutral	Lower Bands	Under	Under	Under				
SR06	100.28	100.03	100.11	100.45	100.08	Neutral	Bullish	Neutral	Upper Bands	Under	Under	Under				
SR08	102.64	102.44	102.44	102.55	102.46	Neutral	Bearish	Neutral	Lower Bands	Under	Under	Under				

Analyst: Lanjar Nafi, lanjar@reliance-securities.com

Source: Reliance Research

Legend :

- Movement: Bullish and Bearish (Indicator Stochastic)
- Momentum: Oversold, Overbought and Neutral (Indicator RSI)
- Resistance Fractal: Strong Resistance
- Support Fractal: Strong Support
- Green: Good Conditions
- Red: Poor Conditions

HEAD OFFICE

Reliance Building

Jl. Pluit Sakti Raya No. 27AB,
Pluit
Jakarta 14450
T. +62 21 661 7768
F. +62 21 661 9884

RESEARCH DIVISION

Robertus Yanuar Hardy

robertus@reliance-securities.com

Rio Adrianus

rio.adrianus@reliance-securities.com

Lanjar Nafi Taulat I

lanjar@reliance-securities.com

Aji Setiawan

aji@reliance-securities.com

Shanti Dwi Jayanti

santi@reliance-securities.com

Senior Analyst

Research Analyst

Technical Research Analyst

Associate Research Analyst

Associate Research Analyst

EQUITY DIVISION

Jakarta- Pluit

Jl. Pluit Sakti Raya No. 27AB,
Pluit
Jakarta 14450
T. +62 21 661 7768
F. +62 21 661 9884

Bandung

Jl.Cisangkuy No.58
Bandung 40115
T. +62 22 721 8200
F. +62 22 721 9255

Surabaya - Gubeng

Jl. Bangka No. 22
Surabaya 60281
T. +62 31 501 1128
F. +62 31 503 3196

Makassar

Jl. Boto Lempangan No. 34 J
Makassar- Sulawesi Selatan
T. +62 411 3632388
F. +62 411 3614634

Jakarta - Sudirman

Menara Batavia Ground Floor
Jl.KH.Mas Mansyur Kav 126
Jakarta 10220
T. +62 21 57905455
F. +62 21 57950728

Tasikmalaya

Ruko Tasik Indah Plaza No.21
Jl. KHZ Mustofa No. 345
Tasikmalaya 46121
T. +62 265 345000
F. +62 265 345003

Surabaya - Diponegoro

Jl. Diponegoro No.26D
Surabaya 60261
T. +62 31 567 0388
F. +62 31 561 0528

Medan

Jl. Teuku Amir Hamzah No.40-O
Medan 20117
T. +62 61 6638592
F. +62 61 6638023

Jakarta - Kebon Jeruk

Plaza Kebon Jeruk
Jl.Raya Perjuangan Blok A/2
Jakarta 11530
T. +62 21 532 4074
F. +62 21 536 2157

Malang

Jl. Guntur No. 19
Malang 65112
T. +62 341 347 611
F. +62 341 347 615

Bali - Denpasar

Dewata Square Blok A3
Jl. Letda Tantular Renon
Denpasar 802361
T. +62 361 225099
F. +62 361 245099

Tangerang

Jl. Pahlawan Seribu Ruko BSD
Sektor 7 Blok RK kav. 9
Tangerang 15310
T. +62 21 5387495
F. +62 21 5387494

Pekanbaru

Jl. Jendral Sudirman No.73
Pekanbaru-Riau
T. +62 761 848414
F. +62 761 849456

Pontianak

Jl. MT Haryono No. 6
Pontianak 78121
T. +62 561 575674
F. +62 561 575670

Jakarta - Centro

Ruko Centro Residence Kav. 4-5
Tower C Lt. 1 No. 26-29
Jl. Macan, Daan Mogot
Jakarta 14450
T. +62 21 56945227
F. +62 21 56945226

Solo

Jl. Slamet Riyadi 330^a
Solo 57145
T. +62 271 736599
F. +62 271 733478

Balikpapan

Ruko Bukit Damai Indah
Blok I, No. 3, Rt.34
Jl. MT. Haryono, Gunung
Bahagia, Balikpapan Selatan
76114
T. +62 542 746313
F. +62 542 746317

IDX CORNER & INVESTMENT GALLERY

President University

Resto Plaza 1F - Jababeka
Education Park
Jl. Ki Hajar Dewantara Raya
Cikarang - Bekasi 17550
T. +62 21 89106030

Universitas Siliwangi Tasikmalaya

Jl. Siliwangi No. 24
Tasikmalaya 46151
T. +62 265 323685
F. +62 265 323534

Politeknik Kediri

Jl. Mayor Bismo No. 27
Kediri 64121
T. +62 354 683128
F. +62 354 683128

Universitas Muhammadiyah Sidoarjo

Jl. Majapahit 666 B
Sidoarjo, Jawa Timur
T. +62 31 8945444
F. +62 31 8949333

Universitas Tanjungpura Pontianak

Jl. Jendral Ahmad Yani
Pontianak 78124
T. +62 561 743465
F. +62 561 766840

Universitas Pesantren Tinggi Darul Ulum

Kompleks Pp Darul Ulu,
Peterongan
Jombang, Jawa Timur 60281
T. +62 321 873655
F. +62 321 875771

STIE "AUB" Surakarta

Jl. Mr. Sartono 97, Cengklik
Nusukan, Surakarta 57135
T. +62 271 854803
F. +62 271 853084

Universitas Surabaya

Jl. Raya Kalirungkut
Surabaya 60293
T. +62 31 298 1203
F. +62 31 298 1204

Universitas Muhammadiyah Gresik

Jl. Sumatra 101 GKB
Gresik 61121
T. +62 31 395 1414
F. +62 31 395 2585

Universitas Negeri Malang

Jl. Surabaya No. 6
Malang 65145
T. +62 341 585914
F. +62 341 55288

Universitas Muhammadiyah Malang

Jl. Raya Tlogomas 246
Malang 65144
T. +62 341 464318-9
F. +62 341 460782

FSEI IAIN Antasari

Jl. Ahmad Yani Km. 4,5
Banjarmasin
T. + 62 511 3265783

STIE Malangkececwara

Jl. Terusan Candi Kalasan
Malang 65142
T. +62 341 491813
F. +62 341 495619

STIESIA Surabaya

Jl. Menur Pumpungan 30
Surabaya
T. +62 31 5947505
F. +62 31 5932218

Universitas 17 Agustus 1945 Banyuwangi

Jl. Adi Sucipto 26
Banyuwangi, Jawa Timur
T. +62 333 419613
F. +62 333 419163

STIE Tri Bhakti

Jl. Teuku Umar No. 24
Cut Meutia Setiakawan,
Bekasi
T. +62 21 82429400,
82429500
F. +62 271 726156

Universitas Islam Kalimantan

Jl. Adiyaksa No. 2, Kayu
Tangi, Banjarmasin
T. + 62 511 3303871
F. + 62 511 3303871

STIKOM Bali

Jalan Puputan No. 86, Renon,
Denpasar
T. +62361 244445
F. +62361 264773

Universitas Muhammadiyah Pontianak

Fakultas Ekonomi UM
Pontianak
Jl. Ahmad Yani, No. 111,
Pontianak 78124
T. +62561 743465
F. +62561 766840

Universitas Negeri Makassar

Fakultas Ekonomi Gedung BT
Lt.2
Jl. A.P. Pettarani, Kampus
UNM, Gunungsari Baru
Makassar 90222
T. +62 411 889464 / 881244
F. +62 411 887604

STIE AAS Surakarta

Jl. Slamet Riyadi No. 361,
Kartasura, Surakarta
T. +62 271 726156
F. +62 271 726156

UPN "Veteran" Yogyakarta

Jl. Babarsari 2, Tambak Bayan
Yogyakarta
T. +62 274 485268
F. +62 274 487147

Disclaimer:

Information, opinions and recommendations contained in this document are presented by PT Reliance Securities Tbk. from sources that are considered reliable and dependable. This document is not an offer, invitation or any kind of representations to decide to buy or sell stock. Investment decisions taken based on this document is not the responsibility of PT Reliance Securities Tbk. PT Reliance Securities Tbk. reserves the right to change the contents of this document at any time without prior notice.