

IHSG



5518.241
85.86
1.58%

Vol (Mn): 8301.453
Val (Bn): 8204.832

LQ45



918.087
19.655
2.19%

Sector Indices	Last	Change	Change %
Agriculture	1829.33	13.35	0.73
Basic Industry	572.72	4.72	0.82
Consumer	5518.24	3117.31	56.49
Finance	855.50	11.88	1.39
Infrastructure	1105.96	19.90	1.80
Manufacture	1442.52	28.56	1.98
Mining	1420.90	23.80	1.68
Misc Industry	1439.62	54.29	3.77
Property	499.67	2.33	0.47
Trade	893.93	9.39	1.05

Source: relitrade next G

Most Active	Last	Change %	Freq
SRIL	294	(7.5)	25,496
BCIP	177	(6.8)	10,957
PBRX	488	0.0	10,283
BNLI	750	(0.7)	8,230
BULL	126	9.6	7,257

Most Volume	Last	Change %	M share
MYRX	124	0.0	19,977
SRIL	294	(7.5)	11,278
BIPI	117	14.7	4,192
TRAM	119	3.5	2,724
BULL	126	9.6	2,561

Most Value	Last	Change %	Rp Bil
BBRI	12,525	3.1	673.56
BBCA	15,875	1.4	590.72
TLKM	4,140	2.5	507.73
ASII	8,575	4.9	473.34
BMRI	11,575	1.1	358.84

Source: relitrade next G

IHSG Technical Review



R3	5860
R2	5700
R1	5540
Last	5518.24
S1	5400
S2	5280
S3	5175

Comment:
 Bullish movement and reached the uptrend channeling resistance level. Huge trading volume.

Stochastic, bullish movement at near overbought oscillator.

RSI bullish momentum at overbought oscillator.

Long term bullish trend movement.

Upside target to 5550. Stop-loss level if pulled back the bullish trend channeling level at 5485.

AKRA



R3	7300
R2	7000
R1	6625
Last	6525
S1	6350
S2	6100
S3	5800
HOLD	

Comment:

Reached the Gartley target level. Waiting for reversal signal and distributions phase.

Stochastic, bullish movement at overbought. Broad dead-cross indications.

RSI bullish consolidations momentum at middle oscillator.

Medium term bearish trend movement.

Upside target to 6625 (Gartley target level). Stop-loss level if pulled back resistance level confirmations at 6450.

JPPFA



R3	2150
R2	1950
R1	1780
Last	1565
S1	1565
S2	1400
S3	1260
TRADING BUY	

Comment:

Bullish homing pigeon candlestick pattern with rebounded at MA200 and bullish trend indications.

Stochastic golden-cross at oversold oscillator. Broad upside potential.

RSI bullish reversal momentum at oversold oscillator.

Long term bullish trend and short term bearish trend movement.

Upside target to 1795 (Retrace the wave). Stop-loss level at 1520 if broke the MA200 support level.

CTRA



R3	1535
R2	1445
R1	1350
Last	1275
S1	1250
S2	1165
S3	1100
SPECULATIVE BUY	

Comment:
 Whipsaw the support level. Reversal signal. Huge trading volume.

Stochastic golden-cross at oversold oscillator. broad upside potential.

RSI bullish momentum from oversold oscillator.

Long term bearish trend movement.

Upside target to bearish trend line at 1370. Stop-loss level at 1240 if broke the support level.

PNLF



R3	242
R2	230
R1	210
Last	210
S1	191
S2	172
S3	155
TRADING BUY	

Comment:
 Flag pattern formations. Bullish continuations.

Stochastic bullish movement at near overbought oscillator.

RSI consolidations momentum at middle oscillator.

Short term bearish trend movement.

Upside target to 230 (flag pattern target level). Stop-loss level if broke the pulled back the upper bound at 200.

Stocks	S2	S1	Closing Price	R1	R2	Technical Notes	Rec	Stop Loss	Rec Buy Prc	Target Price
Plantation										
AALI	14,000	14,900	15,350	15,850	16,700	Break out bearish trend resistance level	H	14,800		15,850
LSIP	1,400	1,475	1,500	1,545	1,630	Consolidations	TB	1,470		1,560
Mining										
INCO	2,120	2,300	2,320	2,500	2,670	Oversold	TB	2,270		2,600
Consumer										
UNVR	41,000	42,500	43,600	44,000	46,000	Broke resistance level	H	42,000		44,000
INDF	7,250	7,900	8,300	8,500	9,125	Sideways	H	8,200		8,500
KLBF	1,370	1,420	1,495	1,485	1,540	Consolidations	W	1,410		
Trading										
ACES	710	755	800	810	870	Bearish momentum	S	750		
AKRA	6,100	6,350	6,525	6,600	6,925	Overbought	H	6,300		6,600
UNTR	24,000	25,325	25,700	26,750	28,175	Bearish momentum	PS	25,300		
Property & Construction										
LPCK	4,160	4,300	4,310	4,460	4,600	Oversold	W	4,290		
WIKA	2,200	2,400	2,450	2,600	2,800	Sideways	W	2,390		
BSDE	1,630	1,720	1,775	1,830	1,935	Bullish momentum	B	1,700	1,770	1,860
WSKT	2,120	2,260	2,330	2,410	2,600	Oversold	W	2,250		2,560
ADHI	2,200	2,300	2,320	2,410	2,540	Consolidations	PS	2,280		
Basic Industry & Chemical										
SMGR	8,150	8,725	9,175	9,350	9,900	Bullish harami	TB	9,000		9,500
CPIN	2,850	3,000	3,190	3,210	3,400	Consolidations	W	3,150		
MAIN	1,050	1,180	1,230	1,300	1,400	Consolidations	W	1,200		
INTP	14,600	15,500	16,000	16,350	17,500	Bullish consolidations	TB	15,300		16,400
Miscellaneous										
SRIL	270	286	294	315	350	Broke support level	W	280		
ASII	7,850	8,250	8,575	8,650	9,000	Rebounded from oversold	H	8,200		8,800
Finance										
BBTN	2,100	2,200	2,300	2,360	2,480	Overbought	H	2,230		2,400
BMRI	10,750	11,000	11,575	11,450	11,800	Stoch dead-cross	PS	11,000		
BTPN	2,340	2,550	2,720	2,770	3,000	Stoch golden-cross	TB	2,600		2,800
BJBR	2,140	2,210	2,240	2,470	2,760	Sideways	W	2,200		
BBRI	11,725	12,300	12,525	13,000	13,500	Broke resistance level	H	12,200		13,000
Infrastructure										
TLKM	3,710	3,950	4,140	4,200	4,400	Overbought	H	3,920		4,200
PGAS	2,360	2,560	2,650	2,800	3,050	Oversold	W	2,600		

Source : Reliance Securities

Analyst Conclusions:

The index has broke the short term sideways trend with gap up and reached the resistance level.

Legend :

- B: BUY (allocate till 100% of the weighted capital to accumulate, higher than 50% upside probability)
- SB: SPECULATIVE BUY (allocate 25%-50% of the weighted capital to accumulate, 25%-50% upside probability)
- W: WAIT (wait for proper entry level, do the stop-loss if necessary)
- H: HOLD (hold the portfolio position, aim for the best price to distribute)
- PS: PARTIAL SELL (distribute 25%-50% part of the portfolio, 25%-50% downside probability)
- S: SELL (distribute till 100% of the portfolio, higher than 50% downside probability)
- TB: TRADING BUY (short term or intraday trading within a tight trading range. Highly speculative).

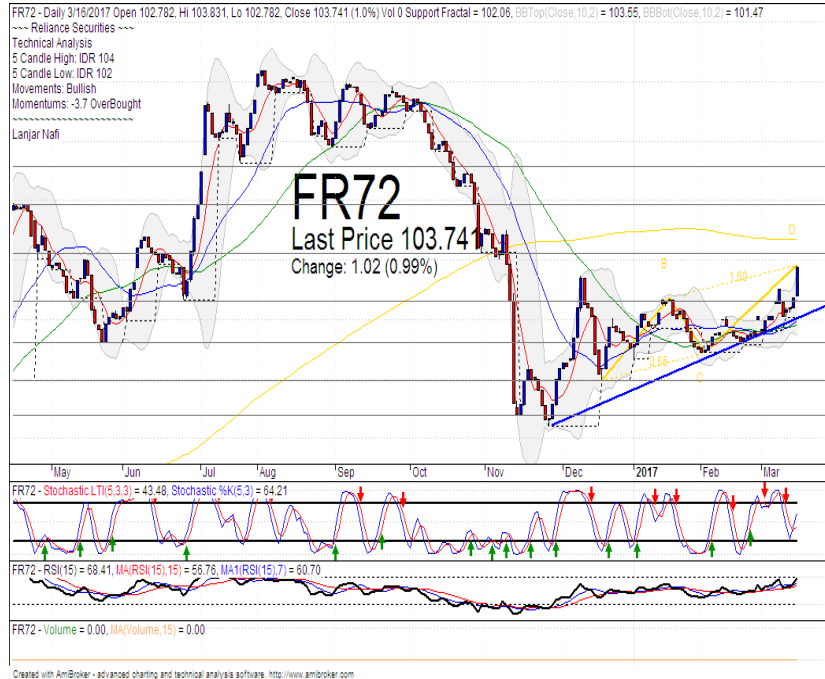
Ticker	Resistance	Price	Support	Weekly	Weekly	Indicator			Moving Average			
	Fractal	3/16/2017	Fractal	High	Low	Stochastic	RSI	B. Band	25 Days	50 Days	200 Days	
AALJ.K	15,400	15,350	15,050	15,375	15,150	Neutral	Bullish	Neutral	Middle Bands	Upper	Under	Under
ACES.JK	810	800	745	810	800	Neutral	Bearish	Neutral	Middle Bands	Upper	Upper	Under
ADHI.JK	2,370	2,320	2,230	2,370	2,300	Neutral	Bullish	Neutral	Middle Bands	Upper	Upper	Under
ADRO.JK	1,755	1,680	1,565	1,700	1,645	Neutral	Bullish	Neutral	Middle Bands	Under	Under	Upper
AISA.JK	2,220	2,280	2,100	2,310	2,200	Neutral	Bullish	Neutral	Middle Bands	Upper	Upper	Upper
AKRA.JK	6,850	6,525	6,050	6,575	6,250	Neutral	Bullish	Neutral	Middle Bands	Upper	Upper	Upper
ANTM.JK	785	715	715	740	710	Oversold	Bullish	Neutral	Middle Bands	Under	Under	Under
APLN.JK	240	224	222	240	226	Neutral	Bearish	Neutral	Middle Bands	Under	Under	Under
ASII.JK	8,575	8,575	8,100	8,575	8,250	Neutral	Bullish	Neutral	Middle Bands	Upper	Upper	Upper
ASRI.JK	374	362	362	374	370	Neutral	Bullish	Neutral	Lower Bands	Under	Under	Under
BBCA.JK	15,675	15,875	15,475	16,000	15,650	Neutral	Bullish	Neutral	Upper Bands	Upper	Upper	Upper
BBKP.JK	620	635	600	640	610	Neutral	Bullish	Neutral	Upper Bands	Upper	Upper	Upper
BBNI.JK	6,450	6,600	6,250	6,600	6,425	Neutral	Bullish	Overbought	Upper Bands	Upper	Upper	Upper
BBRI.JK	12,025	12,525	12,000	12,550	12,125	Neutral	Bullish	Overbought	Upper Bands	Upper	Upper	Upper
BBTN.JK	2,170	2,300	2,000	2,340	2,140	Overbought	Bearish	Neutral	Upper Bands	Upper	Upper	Upper
BDMN.JK	4,900	4,750	4,700	4,900	4,750	Oversold	Bearish	Neutral	Middle Bands	Under	Upper	Upper
BHIT.JK	140	128	126	131	129	Neutral	Bullish	Neutral	Middle Bands	Under	Under	Under
BJBR.JK	2,450	2,240	2,210	2,450	2,250	Oversold	Bullish	Neutral	Lower Bands	Under	Under	Upper
BJTM.JK	575	615	550	620	560	Overbought	Bullish	Neutral	Upper Bands	Upper	Upper	Upper
BKSL.JK	99	90	88	94	91	Oversold	Bullish	Neutral	Middle Bands	Under	Under	Under
BMRI.JK	11,450	11,575	11,200	11,650	11,400	Overbought	Bearish	Neutral	Upper Bands	Upper	Upper	Upper
BMTR.JK	630	510	515	535	520	Oversold	Bearish	Neutral	Middle Bands	Under	Under	Under
BSDE.JK	1,805	1,775	1,745	1,780	1,740	Neutral	Bullish	Neutral	Middle Bands	Under	Under	Under
BTPN.JK	2,840	2,720	2,650	2,750	2,700	Neutral	Bullish	Neutral	Middle Bands	Upper	Upper	Upper
BWPT.JK	386	338	314	346	334	Neutral	Bullish	Neutral	Middle Bands	Under	Under	Upper
CMNP.JK	1,490	1,460	1,460	1,470	1,465	Oversold	Bullish	Neutral	Lower Bands	Under	Under	Under
CPIN.JK	3,210	3,190	3,100	3,210	3,160	Neutral	Bearish	Neutral	Middle Bands	Under	Under	Under
CSAP.JK	515	492	496	498	492	Neutral	Bearish	Neutral	Lower Bands	Under	Under	Upper
CTRA.JK	1,405	1,275	1,265	1,295	1,265	Neutral	Bullish	Neutral	Middle Bands	Under	Under	Under
DILD.JK	510	420	436	442	424	Oversold	Bearish	Overbought	Middle Bands	Under	Under	Under
EXCL.JK	3,090	3,180	2,810	3,190	2,990	Overbought	Bearish	Neutral	Upper Bands	Upper	Upper	Upper
GGRM.JK	62,850	65,050	62,150	65,400	63,500	Neutral	Bullish	Neutral	Middle Bands	Upper	Upper	Under
GIAA.JK	356	354	338	356	342	Neutral	Bullish	Neutral	Upper Bands	Upper	Upper	Under
GJTL.JK	1,260	1,140	1,135	1,215	1,170	Oversold	Bearish	Neutral	Upper Bands	Under	Upper	Under
HEXA.JK	4,250	3,990	3,870	4,000	3,930	Overbought	Bullish	Neutral	Middle Bands	Upper	Upper	Upper
HRUM.JK	2,460	2,300	2,080	2,360	2,290	Neutral	Bullish	Neutral	Middle Bands	Upper	Upper	Upper
ICBP.JK	8,475	8,825	8,075	8,875	8,225	Overbought	Bullish	Overbought	Upper Bands	Upper	Upper	Under
IMAS.JK	1,310	1,265	1,255	1,300	1,255	Oversold	Bearish	Neutral	Middle Bands	Under	Under	Under
INCO.JK	2,580	2,320	2,480	2,380	2,330	Oversold	Bullish	Neutral	Middle Bands	Under	Under	Under
INDF.JK	8,175	8,300	7,875	8,375	8,000	Neutral	Bullish	Neutral	Upper Bands	Upper	Upper	Upper
INDY.JK	775	710	680	745	705	Neutral	Bullish	Neutral	Middle Bands	Under	Under	Upper
INTA.JK	398	366	340	398	368	Neutral	Bearish	Neutral	Middle Bands	Upper	Upper	Upper
INTP.JK	15,775	16,000	15,200	16,000	15,475	Neutral	Bullish	Neutral	Upper Bands	Upper	Upper	Under
ITMG.JK	17,400	17,525	16,150	17,600	16,600	Neutral	Bullish	Neutral	Middle Bands	Upper	Upper	Upper
JFJA.JK	1,775	1,565	1,620	1,660	1,600	Oversold	Bullish	Neutral	Middle Bands	Under	Under	Upper
JSMR.JK	4,650	4,630	4,430	4,650	4,540	Neutral	Bullish	Neutral	Middle Bands	Under	Upper	Under
KUJA.JK	322	320	316	322	320	Neutral	Bearish	Overbought	Middle Bands	Upper	Upper	Upper
KLBF.JK	1,550	1,495	1,440	1,510	1,475	Neutral	Bullish	Neutral	Middle Bands	Upper	Under	Under
KRAS.JK	745	660	660	685	665	Oversold	Bullish	Neutral	Middle Bands	Under	Under	Under
LPCK.JK	5,425	4,310	4,600	4,530	4,390	Oversold	Bullish	Overbought	Middle Bands	Under	Under	Under
LPKR.JK	740	735	715	740	730	Neutral	Bullish	Neutral	Middle Bands	Under	Under	Under
LPFF.JK	13,375	13,525	13,000	13,575	13,200	Neutral	Bullish	Neutral	Middle Bands	Under	Under	Under
LSIP.JK	1,560	1,500	1,455	1,505	1,490	Neutral	Bullish	Neutral	Middle Bands	Under	Under	Under
MAIN.JK	1,270	1,230	1,210	1,275	1,225	Oversold	Bullish	Neutral	Middle Bands	Under	Upper	Under
MAPI.JK	5,600	5,550	5,300	5,600	5,500	Neutral	Bullish	Neutral	Middle Bands	Upper	Upper	Upper
MASA.JK	248	250	202	298	214	Neutral	Bullish	Neutral	Upper Bands	Upper	Upper	Upper
MNCN.JK	1,750	1,725	1,610	1,750	1,710	Neutral	Bearish	Neutral	Middle Bands	Upper	Upper	Under
MPPA.JK	1,240	1,130	1,180	1,210	1,160	Oversold	Bearish	Overbought	Lower Bands	Under	Under	Under
MTLA.JK	340	330	320	340	330	Neutral	Bullish	Neutral	Middle Bands	Upper	Upper	Upper
MYOR.JK	2,250	2,080	2,010	2,250	2,100	Neutral	Bearish	Neutral	Middle Bands	Upper	Upper	Upper
PGAS.JK	2,890	2,650	2,680	2,760	2,710	Oversold	Bearish	Neutral	Middle Bands	Under	Under	Under
PTBA.JK	11,375	11,400	10,200	11,475	10,450	Neutral	Bullish	Neutral	Middle Bands	Upper	Upper	Upper
RALS.JK	1,230	1,120	1,105	1,215	1,155	Neutral	Bearish	Neutral	Middle Bands	Under	Under	Under
ROTI.JK	1,600	1,565	1,440	1,585	1,495	Neutral	Bullish	Neutral	Middle Bands	Upper	Under	Upper
SCMA.JK	2,800	2,710	2,680	2,800	2,750	Neutral	Bearish	Neutral	Middle Bands	Upper	Under	Under
SCRO.JK	2,080	2,010	1,945	2,040	2,000	Neutral	Bullish	Neutral	Middle Bands	Under	Upper	Upper
SIMP.JK	665	575	545	610	580	Neutral	Bullish	Neutral	Middle Bands	Upper	Upper	Upper
SMCB.JK	945	915	900	945	920	Neutral	Bearish	Neutral	Middle Bands	Upper	Upper	Under
SMGR.JK	9,675	9,175	9,125	9,425	9,225	Neutral	Bearish	Neutral	Middle Bands	Under	Upper	Under
SMRA.JK	1,400	1,370	1,330	1,380	1,360	Neutral	Bullish	Neutral	Middle Bands	Under	Upper	Under
SRIL.JK	496	294	272	364	326	Oversold	Bearish	Neutral	Middle Bands	Under	Upper	Upper
SSIA.JK	590	565	545	575	560	Neutral	Bullish	Neutral	Middle Bands	Under	Under	Under
SSMS.JK	1,510	1,465	1,450	1,510	1,480	Neutral	Bearish	Neutral	Middle Bands	Under	Under	Under
TLKM.JK	3,900	4,140	3,880	4,150	3,970	Overbought	Bullish	Overbought	Upper Bands	Upper	Upper	Upper
TOTL.JK	840	810	805	825	815	Neutral	Bearish	Neutral	Lower Bands	Under	Upper	Upper
UNTR.JK	26,125	25,700	25,025	26,125	25,875	Neutral	Bullish	Neutral	Middle Bands	Upper	Upper	Upper
UNVR.JK	42,500	43,600	41,850	43,600	42,400	Neutral	Bearish	Overbought	Upper Bands	Upper	Upper	Upper

Source : Reliance Research

Legend :

- Movement: Bullish and Bearish (Indicator Stochastic)
- Momentum: Oversold, Overbought and Neutral (Indicator RSI)
- Resistance Fractal: Strong Resistance
- Support Fractal: Strong Support
- Green: Good Conditions
- Red: Poor Conditions

FR 72



R3	107.19
R2	105.89
R1	104.20
Last	103.74
S1	102.62
S2	101.24
S3	99.96

BUY

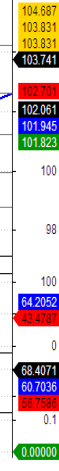
Comment: Bullish momentum after rebounded at bullish trend support level.

Stochastic golden-cross indications at oversold oscillator.

RSI consolidations momentum with limited upside potential at middle oscillator..

Medium term bullish trend movement.

Upside target to MA200 at 104.68. Stop-loss level if broke the bearish trend line at 101.70.



Indonesian Technical Bond

Ticker	Resistance		Price		Support		Weekly		Weekly		Indicator			Moving Average		
	Fractal	3/16/2017	Fractal	High	Low	Stochastic	RSI	B. Band	25 Days	50 Days	200 Days					
FR34	120.36	120.63	120.10	120.63	120.23	Neutral	Bullish	Neutral	Upper Bands	Upper	Upper	Under				
FR43	113.02	113.46	112.33	113.46	112.47	Neutral	Bullish	Neutral	Upper Bands	Upper	Upper	Under				
FR47	115.82	117.43	115.44	117.43	116.14	Overbought	Bearish	Overbought	Upper Bands	Upper	Upper	Under				
FR53	103.91	104.35	103.40	104.35	103.62	Overbought	Bullish	Neutral	Upper Bands	Upper	Under	Under				
FR54	113.33	113.77	112.90	113.77	113.04	Neutral	Bullish	Overbought	Upper Bands	Upper	Upper	Under				
FR56	106.89	107.38	105.62	107.41	106.02	Neutral	Bullish	Neutral	Upper Bands	Upper	Upper	Upper				
FR58	102.00	102.86	102.17	102.86	102.32	Neutral	Bullish	Neutral	Upper Bands	Upper	Upper	Under				
FR59	97.29	98.38	96.52	98.38	96.79	Neutral	Bullish	Overbought	Upper Bands	Upper	Upper	Upper				
FR64	87.15	88.79	86.69	88.79	88.12	Overbought	Bullish	Overbought	Upper Bands	Upper	Upper	Upper				
FR66	98.71	98.85	98.60	98.89	98.81	Overbought	Bearish	Overbought	Upper Bands	Upper	Upper	Upper				
FR68	103.65	104.01	102.95	104.02	103.28	Neutral	Bullish	Neutral	Upper Bands	Upper	Upper	Under				
FR69	102.14	102.09	101.95	102.22	102.07	Neutral	Bearish	Neutral	Upper Bands	Upper	Upper	Upper				
FR70	105.42	106.17	104.63	106.17	105.01	Neutral	Bullish	Overbought	Upper Bands	Upper	Upper	Upper				
FR71	109.43	109.95	108.82	109.99	109.19	Neutral	Bullish	Overbought	Upper Bands	Upper	Upper	Under				
FR72	103.06	103.74	102.06	103.83	102.40	Neutral	Bullish	Neutral	Upper Bands	Upper	Upper	Under				
FR73	108.71	109.09	107.78	109.09	107.92	Neutral	Bullish	Neutral	Upper Bands	Upper	Upper	Under				
ORI13	98.21	98.44	98.07	98.44	98.15	Overbought	Bullish	Neutral	Middle Bands	Upper	Upper	Upper				
ORI12	103.45	103.44	103.24	103.45	103.34	Neutral	Bullish	Neutral	Lower Bands	Under	Under	Under				
SR06	100.28	100.03	100.11	100.45	100.08	Neutral	Bullish	Neutral	Upper Bands	Under	Under	Under				
SR08	102.64	102.56	102.41	102.57	102.44	Neutral	Bullish	Neutral	Upper Bands	Under	Under	Under				

Analyst: Lanjar Nafi, lanjar@reliance-securities.com

Source: Reliance Research

Legend :

- Movement: Bullish and Bearish (Indicator Stochastic)
- Momentum: Oversold, Overbought and Neutral (Indicator RSI)
- Resistance Fractal: Strong Resistance
- Support Fractal: Strong Support
- Green: Good Conditions
- Red: Poor Conditions

HEAD OFFICE

Reliance Building

Jl. Pluit Sakti Raya No. 27AB,
Pluit
Jakarta 14450
T. +62 21 661 7768
F. +62 21 661 9884

RESEARCH DIVISION

Robertus Yanuar Hardy

robertus@reliance-securities.com

Rio Adrianus

rio.adrianus@reliance-securities.com

Lanjar Nafi Taulat I

lanjar@reliance-securities.com

Aji Setiawan

aji@reliance-securities.com

Shanti Dwi Jayanti

santi@reliance-securities.com

Senior Analyst

Research Analyst

Technical Research Analyst

Associate Research Analyst

Associate Research Analyst

EQUITY DIVISION

Jakarta- Pluit

Jl. Pluit Sakti Raya No. 27AB,
Pluit
Jakarta 14450
T. +62 21 661 7768
F. +62 21 661 9884

Bandung

Jl.Cisangkuy No.58
Bandung 40115
T. +62 22 721 8200
F. +62 22 721 9255

Surabaya - Gubeng

Jl. Bangka No. 22
Surabaya 60281
T. +62 31 501 1128
F. +62 31 503 3196

Makassar

Jl. Boto Lempangan No. 34 J
Makassar- Sulawesi Selatan
T. +62 411 3632388
F. +62 411 3614634

Jakarta - Sudirman

Menara Batavia Ground Floor
Jl.KH.Mas Mansyur Kav 126
Jakarta 10220
T. +62 21 57905455
F. +62 21 57950728

Tasikmalaya

Ruko Tasik Indah Plaza No.21
Jl. KHZ Mustofa No. 345
Tasikmalaya 46121
T. +62 265 345000
F. +62 265 345003

Surabaya - Diponegoro

Jl. Diponegoro No.26D
Surabaya 60261
T. +62 31 567 0388
F. +62 31 561 0528

Medan

Jl. Teuku Amir Hamzah No.40-O
Medan 20117
T. +62 61 6638592
F. +62 61 6638023

Jakarta - Kebon Jeruk

Plaza Kebon Jeruk
Jl.Raya Perjuangan Blok A/2
Jakarta 11530
T. +62 21 532 4074
F. +62 21 536 2157

Malang

Jl. Guntur No. 19
Malang 65112
T. +62 341 347 611
F. +62 341 347 615

Bali - Denpasar

Dewata Square Blok A3
Jl. Letda Tantular Renon
Denpasar 802361
T. +62 361 225099
F. +62 361 245099

Tangerang

Jl. Pahlawan Seribu Ruko BSD
Sektor 7 Blok RK kav. 9
Tangerang 15310
T. +62 21 5387495
F. +62 21 5387494

Pekanbaru

Jl. Jendral Sudirman No.73
Pekanbaru-Riau
T. +62 761 848414
F. +62 761 849456

Pontianak

Jl. MT Haryono No. 6
Pontianak 78121
T. +62 561 575674
F. +62 561 575670

Jakarta - Centro

Ruko Centro Residence Kav. 4-5
Tower C Lt. 1 No. 26-29
Jl. Macan, Daan Mogot
Jakarta 14450
T. +62 21 56945227
F. +62 21 56945226

Solo

Jl. Slamet Riyadi 330^a
Solo 57145
T. +62 271 736599
F. +62 271 733478

Balikpapan

Ruko Bukit Damai Indah
Blok I, No. 3, Rt.34
Jl. MT. Haryono, Gunung
Bahagia, Balikpapan Selatan
76114
T. +62 542 746313
F. +62 542 746317

IDX CORNER & INVESTMENT GALLERY

President University

Resto Plaza 1F - Jababeka
Education Park
Jl. Ki Hajar Dewantara Raya
Cikarang - Bekasi 17550
T. +62 21 89106030

Universitas Siliwangi Tasikmalaya

Jl. Siliwangi No. 24
Tasikmalaya 46151
T. +62 265 323685
F. +62 265 323534

Politeknik Kediri

Jl. Mayor Bismo No. 27
Kediri 64121
T. +62 354 683128
F. +62 354 683128

Universitas Muhammadiyah Sidoarjo

Jl. Majapahit 666 B
Sidoarjo, Jawa Timur
T. +62 31 8945444
F. +62 31 8949333

Universitas Tanjungpura Pontianak

Jl. Jendral Ahmad Yani
Pontianak 78124
T. +62 561 743465
F. +62 561 766840

Universitas Pesantren Tinggi Darul Ulum

Kompleks Pp Darul Ulu,
Peterongan
Jombang, Jawa Timur 60281
T. +62 321 873655
F. +62 321 875771

STIE "AUB" Surakarta

Jl. Mr. Sartono 97, Cengklik
Nusukan, Surakarta 57135
T. +62 271 854803
F. +62 271 853084

Universitas Surabaya

Jl. Raya Kalirungkut
Surabaya 60293
T. +62 31 298 1203
F. +62 31 298 1204

Universitas Muhammadiyah Gresik

Jl. Sumatra 101 GKB
Gresik 61121
T. +62 31 395 1414
F. +62 31 395 2585

Universitas Negeri Malang

Jl. Surabaya No. 6
Malang 65145
T. +62 341 585914
F. +62 341 55288

Universitas Muhammadiyah Malang

Jl. Raya Tlogomas 246
Malang 65144
T. +62 341 464318-9
F. +62 341 460782

FSEI IAIN Antasari

Jl. Ahmad Yani Km. 4,5
Banjarmasin
T. + 62 511 3265783

STIE Malangkececwara

Jl. Terusan Candi Kalasan
Malang 65142
T. +62 341 491813
F. +62 341 495619

STIESIA Surabaya

Jl. Menur Pumpungan 30
Surabaya
T. +62 31 5947505
F. +62 31 5932218

Universitas 17 Agustus 1945 Banyuwangi

Jl. Adi Sucipto 26
Banyuwangi, Jawa Timur
T. +62 333 419613
F. +62 333 419163

STIE Tri Bhakti

Jl. Teuku Umar No. 24
Cut Meutia Setiakawan,
Bekasi
T. +62 21 82429400,
82429500
F. +62 271 726156

Universitas Islam Kalimantan

Jl. Adiyaksa No. 2, Kayu
Tangi, Banjarmasin
T. + 62 511 3303871
F. + 62 511 3303871

STIKOM Bali

Jalan Puputan No. 86, Renon,
Denpasar
T. +62361 244445
F. +62361 264773

Universitas Muhammadiyah Pontianak

Fakultas Ekonomi UM
Pontianak
Jl. Ahmad Yani, No. 111,
Pontianak 78124
T. +62561 743465
F. +62561 766840

Universitas Negeri Makassar

Fakultas Ekonomi Gedung BT
Lt.2
Jl. A.P. Pettarani, Kampus
UNM, Gunungsari Baru
Makassar 90222
T. +62 411 889464 / 881244
F. +62 411 887604

STIE AAS Surakarta

Jl. Slamet Riyadi No. 361,
Kartasura, Surakarta
T. +62 271 726156
F. +62 271 726156

UPN "Veteran" Yogyakarta

Jl. Babarsari 2, Tambak Bayan
Yogyakarta
T. +62 274 485268
F. +62 274 487147

Disclaimer:

Information, opinions and recommendations contained in this document are presented by PT Reliance Securities Tbk. from sources that are considered reliable and dependable. This document is not an offer, invitation or any kind of representations to decide to buy or sell stock. Investment decisions taken based on this document is not the responsibility of PT Reliance Securities Tbk. PT Reliance Securities Tbk. reserves the right to change the contents of this document at any time without prior notice.