

IHSG



5540.43
22.189
0.40%

Vol (Mn): 8301.453
Val (Bn): 8204.832

LQ45



922.896
4.809
0.52%

Sector Indices	Last	Change	Change %
Agriculture	1830.98	1.65	0.09
Basic Industry	575.62	2.90	0.50
Consumer	2441.17	(3.66)	(0.15)
Finance	864.58	9.09	1.05
Infrastructure	1101.72	(4.24)	(0.39)
Manufacture	1439.77	(2.75)	(0.19)
Mining	1440.80	19.90	1.38
Misc Industry	1424.64	(14.97)	(1.05)
Property	504.13	4.46	0.88
Trade	903.13	9.20	1.02

Source: relitrade next G

Most Active	Last	Change %	Freq
BUMI	348	13.0	12,755
WICO	91	(6.2)	10,786
PGAS	2,540	(4.2)	10,282
TLKM	4,110	(0.7)	8,992
UNSP	366	17.3	7,610

Most Volume	Last	Change %	M share
MYRX	124	0.0	17,865
BUMI	348	13.0	10,211
DEWA	74	8.8	4,497
BRMS	94	6.8	3,415
BIPI	119	1.7	3,113

Most Value	Last	Change %	Rp Bil
HMSP	4,010	(1.0)	1,007.56
BBRI	13,000	3.8	960.00
LPPF	13,850	2.4	903.20
BBCA	15,950	0.5	714.59
TLKM	4,110	(0.7)	505.00

Source: relitrade next G

IHSG Technical Review



R3	5860
R2	5700
R1	5540
Last	5540.43
S1	5400
S2	5280
S3	5175

Comment:
 Northern star candlestick pattern. Reversal signal at bullish trend channeling resistance level.

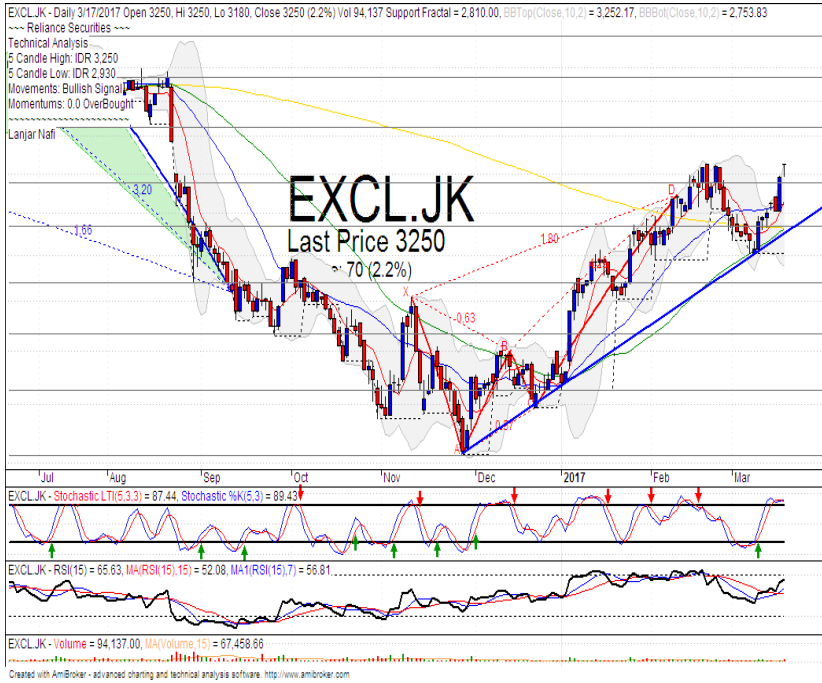
Stochastic, bullish movement at overbought oscillator.

RSI bullish momentum at overbought oscillator.

Long term bullish trend movement.

Stop-loss level if pulled back the channeling bullish trend resistance level at 5485.

EXCL



R3	4000
R2	3740
R1	3450
Last	3250
S1	3150
S2	2940
S3	2670
HOLD	

Comment:

Gravestone doji candlestick pattern. Reversal signal.

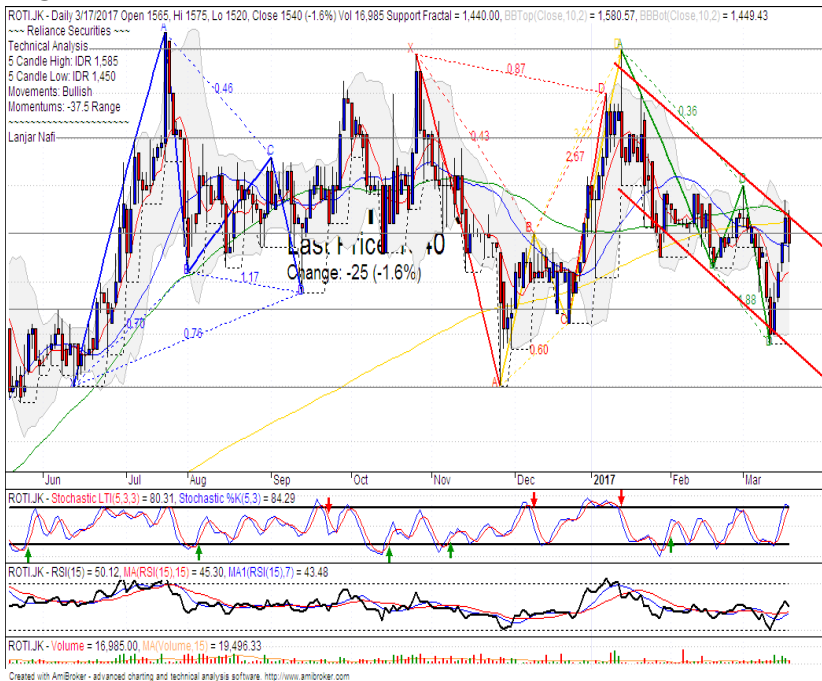
Stochastic, dead-cross at overbought oscillator. broad downside potential.

RSI limited bullish momentum at near overbought.

Medium term bullish trend movement.

Stop-loss level if bearish signal confirmations at 3180. Downside potential until 2930.

ROTI



R3	1750
R2	1650
R1	1550
Last	1540
S1	1475
S2	1400
S3	1310
SELL	

Comment:

Bearish engulfing candlestick pattern. Pulled back bearish trend line resistance level.

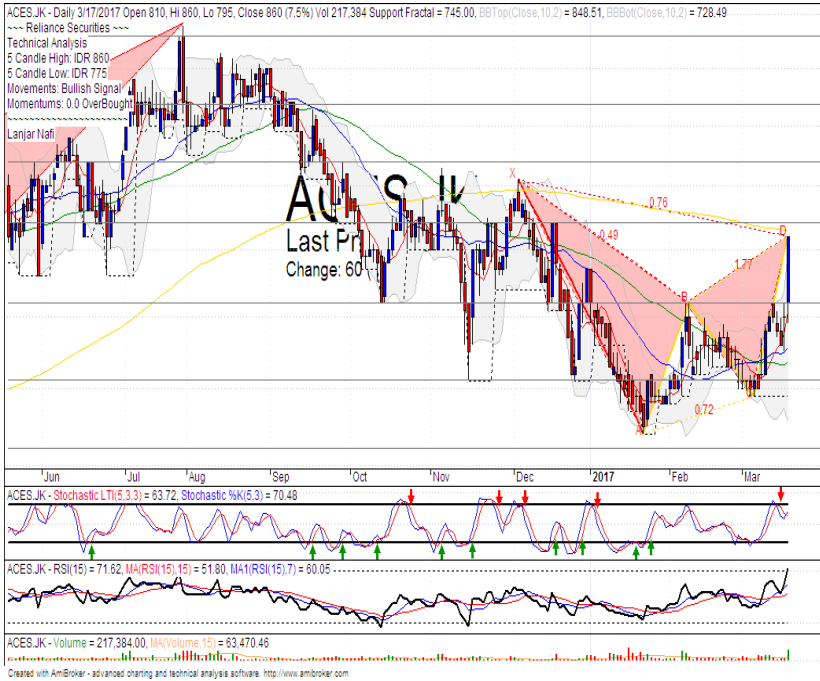
Stochastic dead-cross at overbought oscillator. Broad downside potential.

RSI consolidations momentum at middle oscillator.

Medium term bearish trend movement.

Stop-loss level at 1510 if broke the MA25 support level. Downside potential until 1450 (Lower Bollinger bands).

ACES



R3	970
R2	920
R1	870
Last	860
S1	810
S2	755
S3	710
PARTIAL SELL	

Comment:
Reached the MA200 resistance level. Huge trading volume. Bearish gartley harmonic pattern formations.

Stochastic bearish consolidations movement at near overbought oscillator.

RSI bullish momentum at overbought oscillator.

Short term bullish trend movement.

Stop-loss level if pulled back the MA200 resistance level at 845. Downside potential until 800.

ANTM



R3	920
R2	860
R1	780
Last	760
S1	730
S2	680
S3	615
HOLD	

Comment:
Trying to reached the bearish trend line resistance level.

Stochastic golden-cross at oversold oscillator. broad upside potential.

RSI bullish reversal momentum at oversold oscillator.

Medium term bearish trend movement.

Upside target to 800 (MA200 target level). Stop-loss level if pulled back the MA25 at 750.

Stocks	S2	S1	Closing Price	R1	R2	Technical Notes	Rec	Stop Loss	Rec Buy Prc	Target Price
Plantation										
AALI	14,000	14,900	15,250	15,850	16,700	Consolidations	PS	14,800		
LSIP	1,400	1,475	1,490	1,545	1,630	Consolidations	TB	1,470		1,560
Mining										
INCO	2,120	2,300	2,340	2,500	2,670	Rebounded from oversold	TB	2,270		2,600
Consumer										
UNVR	41,000	42,500	44,000	44,000	46,000	Reached the resistance level	H	42,000		44,000
INDF	7,250	7,900	8,325	8,500	9,125	Pulled back resistance level	PS	8,200		
KLBF	1,420	1,485	1,510	1,540	1,600	Bullish momentum	TB	1,480		1,550
Trading										
ACES	755	810	860	870	920	Bullish consolidations	H	800		870
AKRA	6,100	6,350	6,600	6,600	6,925	Overbought	H	6,300		6,600
UNTR	25,325	26,750	27,000	28,175	30,000	Consolidations	H	26,700		27,500
Property & Construction										
LPCX	4,160	4,300	4,380	4,460	4,600	Oversold	TB	4,290		4,600
WIKA	2,200	2,400	2,490	2,600	2,800	Sideways	W	2,390		
BSDE	1,720	1,830	1,840	1,935	2,030	Bullish momentum	H	1,820		1,900
WSKT	2,120	2,260	2,360	2,410	2,600	Bullish harami	TB	2,300		2,520
ADHI	2,200	2,300	2,370	2,410	2,540	Consolidations	PS	2,280		
Basic Industry & Chemical										
SMGR	8,150	8,725	9,225	9,350	9,900	Bullish consolidations	TB	9,000		9,500
CPIN	3,000	3,210	3,340	3,400	3,580	Consolidations	H	3,200		3,480
MAIN	1,050	1,180	1,240	1,300	1,400	Consolidations	W	1,200		
INTP	14,600	15,500	15,900	16,350	17,500	Overbought	TB	15,300		16,400
Miscellaneous										
SRIL	250	270	280	290	315	Oversold	W	268		
ASII	7,850	8,250	8,475	8,650	9,000	Consolidations	H	8,200		
Finance										
BBTN	2,100	2,200	2,260	2,360	2,480	Dark cloud cover	PS	2,230		
BMRI	10,750	11,000	11,625	11,450	11,800	Stoch dead-cross	PS	11,000		
BTPN	2,340	2,550	2,710	2,770	3,000	Consolidations	TB	2,650		2,800
BJBR	2,140	2,210	2,240	2,470	2,760	Stoch golden-cross	TB	2,200		2,470
BBRI	11,725	12,300	13,000	13,000	13,500	Reached the resistance level	H	12,200		13,000
Infrastructure										
TLKM	3,710	3,950	4,110	4,200	4,400	Bearish harami	PS	3,920		
PGAS	2,360	2,560	2,540	2,800	3,050	Bearish momentum	W	2,600		

Source : Reliance Securities

Analyst Conclusions:

The index has broke the short term sideways trend with gap up and reached the resistance level.

Legend :

- B: BUY (allocate till 100% of the weighted capital to accumulate, higher than 50% upside probability)
- SB: SPECULATIVE BUY (allocate 25%-50% of the weighted capital to accumulate, 25%-50% upside probability)
- W: WAIT (wait for proper entry level, do the stop-loss if necessary)
- H: HOLD (hold the portfolio position, aim for the best price to distribute)
- PS: PARTIAL SELL (distribute 25%-50% part of the portfolio, 25%-50% downside probability)
- S: SELL (distribute till 100% of the portfolio, higher than 50% downside probability)
- TB: TRADING BUY (short term or intraday trading within a tight trading range. Highly speculative).

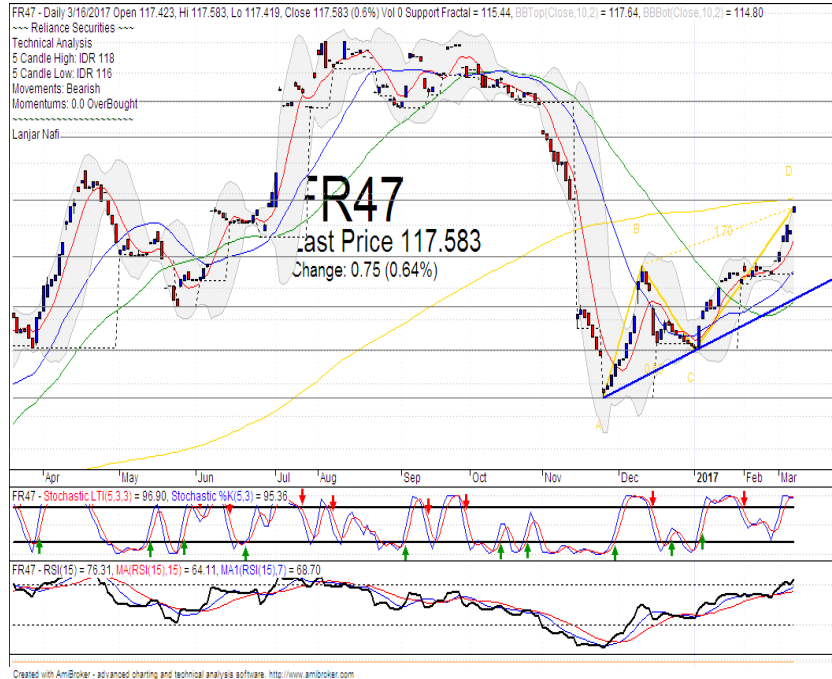
Ticker	Resistance	Price	Support	Weekly	Weekly	Indicator			Moving Average			
	Fractal	3/17/2017	Fractal	High	Low	Stochastic	RSI	B. Band	25 Days	50 Days	200 Days	
AALI.JK	15,400	15,250	14,975	15,400	15,150	Neutral	Bullish	Neutral	Middle Bands	Upper	Under	Under
ACES.JK	810	860	745	860	800	Neutral	Bullish	Overbought	Upper Bands	Upper	Upper	Under
ADHI.JK	2,370	2,370	2,230	2,370	2,340	Neutral	Bullish	Neutral	Middle Bands	Upper	Upper	Under
ADRO.JK	1,755	1,705	1,565	1,705	1,645	Neutral	Bullish	Neutral	Middle Bands	Upper	Upper	Upper
AISA.JK	2,220	2,190	2,100	2,310	2,210	Neutral	Bearish	Neutral	Middle Bands	Upper	Upper	Upper
AKRA.JK	6,850	6,600	6,050	6,600	6,200	Overbought	Bullish	Neutral	Upper Bands	Upper	Upper	Upper
ANTM.JK	785	760	690	780	710	Neutral	Bullish	Neutral	Middle Bands	Under	Under	Under
APLN.JK	240	224	222	240	226	Oversold	Bearish	Neutral	Lower Bands	Under	Under	Under
ASII.JK	8,575	8,475	8,150	8,800	8,250	Neutral	Bullish	Neutral	Middle Bands	Upper	Upper	Upper
ASRI.JK	374	366	362	374	366	Neutral	Bullish	Neutral	Middle Bands	Under	Under	Under
BBKA.JK	15,675	15,950	15,475	16,200	15,650	Neutral	Bullish	Overbought	Upper Bands	Upper	Upper	Upper
BBKP.JK	620	635	575	645	610	Neutral	Bullish	Neutral	Upper Bands	Upper	Upper	Upper
BBNI.JK	6,450	6,700	6,300	6,700	6,425	Neutral	Bullish	Overbought	Upper Bands	Upper	Upper	Upper
BBRI.JK	12,025	13,000	12,000	13,000	12,125	Neutral	Bullish	Overbought	Upper Bands	Upper	Upper	Upper
BBTN.JK	2,170	2,260	2,000	2,340	2,170	Neutral	Bearish	Neutral	Middle Bands	Upper	Upper	Upper
BDMN.JK	4,900	4,900	4,700	4,900	4,750	Oversold	Bullish	Neutral	Middle Bands	Upper	Upper	Upper
BHIT.JK	140	129	126	130	129	Neutral	Bullish	Neutral	Middle Bands	Under	Under	Under
BJBR.JK	2,450	2,240	2,210	2,320	2,250	Oversold	Bullish	Neutral	Middle Bands	Under	Under	Upper
BJTM.JK	575	625	550	625	580	Overbought	Bullish	Overbought	Upper Bands	Upper	Upper	Upper
BKSL.JK	99	90	88	93	91	Neutral	Bullish	Neutral	Middle Bands	Under	Under	Under
BMRI.JK	11,450	11,625	11,200	11,700	11,400	Overbought	Bearish	Neutral	Middle Bands	Upper	Upper	Upper
BMTR.JK	630	515	505	535	520	Oversold	Bullish	Neutral	Middle Bands	Under	Under	Under
BSDE.JK	1,805	1,840	1,700	1,840	1,740	Neutral	Bullish	Neutral	Upper Bands	Upper	Upper	Under
BTPN.JK	2,840	2,710	2,650	2,720	2,700	Neutral	Bullish	Neutral	Middle Bands	Upper	Upper	Upper
BWPT.JK	386	336	314	344	334	Neutral	Bullish	Neutral	Middle Bands	Under	Under	Upper
CMNP.JK	1,490	1,460	1,460	1,470	1,465	Oversold	Bullish	Neutral	Lower Bands	Under	Under	Under
CPIN.JK	3,210	3,340	3,100	3,340	3,160	Neutral	Bullish	Neutral	Upper Bands	Upper	Upper	Under
CSAP.JK	515	494	486	498	492	Neutral	Bullish	Neutral	Middle Bands	Under	Under	Upper
CTRA.JK	1,405	1,260	1,240	1,295	1,265	Neutral	Bullish	Neutral	Middle Bands	Under	Under	Under
DILD.JK	510	444	436	444	424	Oversold	Bullish	Neutral	Middle Bands	Under	Under	Under
EXCL.JK	3,090	3,250	2,810	3,250	3,030	Overbought	Bullish	Neutral	Upper Bands	Upper	Upper	Upper
GGAM.JK	62,850	65,250	62,150	65,950	63,500	Overbought	Bullish	Neutral	Middle Bands	Upper	Upper	Under
GIAA.JK	356	344	338	360	342	Neutral	Bullish	Neutral	Middle Bands	Under	Upper	Under
GIJL.JK	1,260	1,190	1,135	1,195	1,170	Neutral	Bullish	Neutral	Middle Bands	Upper	Upper	Under
HEXA.JK	4,250	3,980	3,950	4,000	3,970	Overbought	Bearish	Neutral	Middle Bands	Upper	Upper	Upper
HRUM.JK	2,460	2,320	2,080	2,350	2,290	Neutral	Bullish	Neutral	Middle Bands	Upper	Upper	Upper
ICBP.JK	8,475	8,700	8,075	8,900	8,325	Overbought	Bearish	Neutral	Upper Bands	Upper	Upper	Under
IMAS.JK	1,310	1,255	1,255	1,300	1,255	Oversold	Bearish	Neutral	Middle Bands	Under	Under	Under
INCO.JK	2,580	2,340	2,280	2,410	2,330	Oversold	Bullish	Neutral	Middle Bands	Under	Under	Under
INDF.JK	8,175	8,325	7,875	8,525	8,000	Neutral	Bullish	Neutral	Upper Bands	Upper	Upper	Upper
INDY.JK	745	705	680	745	705	Neutral	Bullish	Neutral	Middle Bands	Under	Under	Upper
INTA.JK	398	370	358	386	368	Neutral	Bearish	Neutral	Middle Bands	Upper	Upper	Upper
INTP.JK	15,775	15,900	15,300	16,000	15,500	Overbought	Bullish	Neutral	Upper Bands	Upper	Upper	Under
ITMG.JK	17,400	17,750	16,150	17,975	16,600	Neutral	Bullish	Neutral	Middle Bands	Upper	Upper	Upper
JFJA.JK	1,775	1,540	1,620	1,660	1,590	Oversold	Bullish	Neutral	Middle Bands	Under	Under	Under
JSMR.JK	4,650	4,740	4,430	4,740	4,540	Overbought	Bullish	Neutral	Middle Bands	Upper	Upper	Under
KUJA.JK	322	320	316	322	320	Neutral	Bullish	Overbought	Middle Bands	Upper	Upper	Upper
KLBF.JK	1,550	1,510	1,440	1,510	1,485	Neutral	Bullish	Neutral	Middle Bands	Upper	Upper	Under
KRAS.JK	745	680	650	685	665	Neutral	Bullish	Neutral	Middle Bands	Under	Under	Under
LPCK.JK	5,425	4,380	4,600	4,480	4,380	Oversold	Bullish	Oversold	Middle Bands	Under	Under	Under
LPKR.JK	740	750	720	750	730	Overbought	Bullish	Neutral	Upper Bands	Upper	Upper	Under
LPPF.JK	13,375	13,850	13,000	13,950	13,200	Neutral	Bullish	Neutral	Middle Bands	Upper	Under	Under
LSIP.JK	1,560	1,490	1,455	1,510	1,490	Neutral	Bullish	Neutral	Middle Bands	Under	Under	Under
MAIN.JK	1,270	1,240	1,210	1,275	1,225	Neutral	Bullish	Neutral	Upper Bands	Under	Upper	Under
MAPI.JK	5,600	6,075	5,400	6,075	5,500	Neutral	Bullish	Neutral	Upper Bands	Upper	Upper	Upper
MASA.JK	248	242	202	298	230	Neutral	Bearish	Neutral	Middle Bands	Upper	Upper	Upper
MNCN.JK	1,750	1,720	1,610	1,750	1,710	Neutral	Bearish	Neutral	Middle Bands	Upper	Upper	Under
MPPA.JK	1,240	1,120	1,180	1,200	1,155	Oversold	Bearish	Oversold	Middle Bands	Under	Under	Under
MTLA.JK	340	320	320	340	330	Neutral	Bearish	Neutral	Middle Bands	Upper	Upper	Upper
MYOR.JK	2,250	2,070	2,050	2,210	2,100	Oversold	Bearish	Neutral	Middle Bands	Upper	Upper	Upper
PGAS.JK	2,890	2,540	2,680	2,750	2,710	Oversold	Bearish	Neutral	Lower Bands	Under	Under	Under
PTBA.JK	11,375	11,425	10,200	11,600	10,450	Overbought	Bullish	Neutral	Middle Bands	Upper	Upper	Upper
RALS.JK	1,230	1,150	1,105	1,200	1,155	Neutral	Bearish	Neutral	Middle Bands	Under	Under	Under
ROTI.JK	1,600	1,540	1,440	1,585	1,500	Overbought	Bullish	Neutral	Middle Bands	Upper	Under	Under
SCMA.JK	2,800	2,720	2,680	2,800	2,740	Neutral	Bearish	Neutral	Middle Bands	Under	Under	Under
SGRO.JK	2,080	1,995	1,945	2,020	2,000	Neutral	Bullish	Neutral	Middle Bands	Under	Upper	Upper
SIMP.JK	665	590	545	600	580	Neutral	Bullish	Neutral	Middle Bands	Upper	Upper	Upper
SMCB.JK	945	915	900	945	920	Neutral	Bearish	Neutral	Middle Bands	Upper	Upper	Under
SMGR.JK	9,675	9,225	9,050	9,425	9,225	Neutral	Bullish	Neutral	Middle Bands	Under	Upper	Under
SMRA.JK	1,400	1,400	1,330	1,400	1,360	Neutral	Bullish	Neutral	Upper Bands	Upper	Upper	Under
SRIL.JK	496	280	272	362	298	Oversold	Bearish	Neutral	Middle Bands	Under	Under	Upper
SSIA.JK	590	585	545	585	560	Neutral	Bullish	Neutral	Upper Bands	Upper	Upper	Upper
SSMS.JK	1,510	1,455	1,450	1,485	1,480	Neutral	Bearish	Neutral	Middle Bands	Under	Under	Under
TLKM.JK	3,900	4,110	3,880	4,150	3,970	Overbought	Bullish	Neutral	Middle Bands	Upper	Upper	Upper
TOTL.JK	840	815	805	820	815	Neutral	Bullish	Neutral	Middle Bands	Under	Upper	Upper
UNTR.JK	26,125	27,000	25,125	27,000	25,875	Neutral	Bullish	Neutral	Upper Bands	Upper	Upper	Upper
UNVR.JK	42,500	44,000	41,875	44,200	42,400	Neutral	Bullish	Overbought	Upper Bands	Upper	Upper	Upper

Source : Reliance Research

Legend :

- Movement: Bullish and Bearish (Indicator Stochastic)
- Momentum: Oversold, Overbought and Neutral (Indicator RSI)
- Resistance Fractal: Strong Resistance
- Support Fractal: Strong Support
- Green: Good Conditions
- Red: Poor Conditions

FR 47



R3	121.40
R2	119.84
R1	117.75
Last	117.58
S1	115.95
S2	114.39
S3	113.00

SELL

Comment:
 Gap up and reached the MA200 resistance level. Huge trading volume.

Stochastic dead-cross at overbought oscillator.

RSI reversal momentum at overbought oscillator. broad downside potential.

Medium term bullish trend movement.

Stop-loss level if pulled back MA200 resistance level at 117.00.

Indonesian Technical Bond

Ticker	Resistance		Support	Weekly		Indicator			Moving Average			
	Fractal	Price		Fractal	High	Low	Stochastic	RSI	B. Band	25 Days	50 Days	200 Days
FR34	120.36	120.67	120.10	120.67	120.23	Neutral	Bullish	Neutral	Upper Bands	Upper	Upper	Under
FR43	113.02	113.57	112.55	113.57	112.74	Neutral	Bullish	Neutral	Upper Bands	Upper	Upper	Under
FR47	115.82	117.58	115.44	117.58	116.14	Overbought	Bearish	Overbought	Upper Bands	Upper	Upper	Under
FR53	103.91	104.43	103.40	104.47	103.84	Overbought	Bullish	Neutral	Upper Bands	Upper	Under	Upper
FR54	113.33	114.10	112.90	114.10	113.04	Overbought	Bullish	Overbought	Upper Bands	Upper	Upper	Under
FR56	106.89	107.72	105.62	107.72	106.02	Neutral	Bullish	Neutral	Upper Bands	Upper	Upper	Upper
FR58	102.00	102.83	102.17	103.03	102.32	Neutral	Bullish	Neutral	Upper Bands	Upper	Upper	Under
FR59	97.29	98.74	96.52	98.74	96.88	Overbought	Bullish	Overbought	Upper Bands	Upper	Upper	Upper
FR64	87.15	89.09	86.69	89.09	88.13	Overbought	Bullish	Overbought	Upper Bands	Upper	Upper	Upper
FR66	98.71	98.83	98.60	98.89	98.81	Overbought	Bearish	Neutral	Upper Bands	Upper	Upper	Upper
FR68	103.65	104.42	102.95	104.45	103.28	Neutral	Bullish	Overbought	Upper Bands	Upper	Upper	Under
FR69	102.14	102.29	101.95	102.29	102.07	Neutral	Bullish	Neutral	Upper Bands	Upper	Upper	Upper
FR70	105.42	106.54	104.63	106.58	105.04	Overbought	Bullish	Overbought	Upper Bands	Upper	Upper	Upper
FR71	109.43	110.07	108.82	110.09	109.19	Overbought	Bullish	Overbought	Upper Bands	Upper	Upper	Under
FR72	103.06	104.34	102.06	104.38	102.40	Neutral	Bullish	Overbought	Upper Bands	Upper	Upper	Under
FR73	108.71	109.53	107.78	109.53	107.92	Neutral	Bullish	Overbought	Upper Bands	Upper	Upper	Upper
ORI13	98.21	98.44	98.07	98.44	98.15	Overbought	Bullish	Neutral	Middle Bands	Upper	Upper	Upper
ORI12	103.45	103.55	103.24	103.56	103.34	Neutral	Bullish	Neutral	Upper Bands	Upper	Under	Under
SR06	100.28	100.03	100.11	100.45	100.08	Neutral	Bullish	Neutral	Upper Bands	Under	Under	Under
SR08	102.64	102.73	102.41	102.73	102.44	Neutral	Bullish	Neutral	Upper Bands	Upper	Under	Under

Analyst: Lanjar Nafi, lanjar@reliance-securities.com

Source: Reliance Research

Legend :

- Movement: Bullish and Bearish (Indicator Stochastic)
- Momentum: Oversold, Overbought and Neutral (Indicator RSI)
- Resistance Fractal: Strong Resistance
- Support Fractal: Strong Support
- Green: Good Conditions
- Red: Poor Conditions

HEAD OFFICE

Reliance Building

Jl. Pluit Sakti Raya No. 27AB,
Pluit
Jakarta 14450
T. +62 21 661 7768
F. +62 21 661 9884

RESEARCH DIVISION

Robertus Yanuar Hardy

robertus@reliance-securities.com

Rio Adrianus

rio.adrianus@reliance-securities.com

Lanjar Nafi Taulat I

lanjar@reliance-securities.com

Aji Setiawan

aji@reliance-securities.com

Shanti Dwi Jayanti

santi@reliance-securities.com

Senior Analyst

Research Analyst

Technical Research Analyst

Associate Research Analyst

Associate Research Analyst

EQUITY DIVISION

Jakarta- Pluit

Jl. Pluit Sakti Raya No. 27AB,
Pluit
Jakarta 14450
T. +62 21 661 7768
F. +62 21 661 9884

Bandung

Jl.Cisangkuy No.58
Bandung 40115
T. +62 22 721 8200
F. +62 22 721 9255

Surabaya - Gubeng

Jl. Bangka No. 22
Surabaya 60281
T. +62 31 501 1128
F. +62 31 503 3196

Makassar

Jl. Boto Lempangan No. 34 J
Makassar- Sulawesi Selatan
T. +62 411 3632388
F. +62 411 3614634

Jakarta - Sudirman

Menara Batavia Ground Floor
Jl.KH.Mas Mansyur Kav 126
Jakarta 10220
T. +62 21 57905455
F. +62 21 57950728

Tasikmalaya

Ruko Tasik Indah Plaza No.21
Jl. KHZ Mustofa No. 345
Tasikmalaya 46121
T. +62 265 345000
F. +62 265 345003

Surabaya - Diponegoro

Jl. Diponegoro No.26D
Surabaya 60261
T. +62 31 567 0388
F. +62 31 561 0528

Medan

Jl. Teuku Amir Hamzah No.40-O
Medan 20117
T. +62 61 6638592
F. +62 61 6638023

Jakarta - Kebon Jeruk

Plaza Kebon Jeruk
Jl.Raya Perjuangan Blok A/2
Jakarta 11530
T. +62 21 532 4074
F. +62 21 536 2157

Malang

Jl. Guntur No. 19
Malang 65112
T. +62 341 347 611
F. +62 341 347 615

Bali - Denpasar

Dewata Square Blok A3
Jl. Letda Tantular Renon
Denpasar 802361
T. +62 361 225099
F. +62 361 245099

Tangerang

Jl. Pahlawan Seribu Ruko BSD
Sektor 7 Blok RK kav. 9
Tangerang 15310
T. +62 21 5387495
F. +62 21 5387494

Pekanbaru

Jl. Jendral Sudirman No.73
Pekanbaru-Riau
T. +62 761 848414
F. +62 761 849456

Pontianak

Jl. MT Haryono No. 6
Pontianak 78121
T. +62 561 575674
F. +62 561 575670

Jakarta - Centro

Ruko Centro Residence Kav. 4-5
Tower C Lt. 1 No. 26-29
Jl. Macan, Daan Mogot
Jakarta 14450
T. +62 21 56945227
F. +62 21 56945226

Solo

Jl. Slamet Riyadi 330^a
Solo 57145
T. +62 271 736599
F. +62 271 733478

Balikpapan

Ruko Bukit Damai Indah
Blok I, No. 3, Rt.34
Jl. MT. Haryono, Gunung
Bahagia, Balikpapan Selatan
76114
T. +62 542 746313
F. +62 542 746317

IDX CORNER & INVESTMENT GALLERY

President University

Resto Plaza 1F - Jababeka
Education Park
Jl. Ki Hajar Dewantara Raya
Cikarang - Bekasi 17550
T. +62 21 89106030

Universitas Siliwangi Tasikmalaya

Jl. Siliwangi No. 24
Tasikmalaya 46151
T. +62 265 323685
F. +62 265 323534

Politeknik Kediri

Jl. Mayor Bismo No. 27
Kediri 64121
T. +62 354 683128
F. +62 354 683128

Universitas Muhammadiyah Sidoarjo

Jl. Majapahit 666 B
Sidoarjo, Jawa Timur
T. +62 31 8945444
F. +62 31 8949333

Universitas Tanjungpura Pontianak

Jl. Jendral Ahmad Yani
Pontianak 78124
T. +62 561 743465
F. +62 561 766840

Universitas Pesantren Tinggi Darul Ulum

Kompleks Pp Darul Ulu,
Peterongan
Jombang, Jawa Timur 60281
T. +62 321 873655
F. +62 321 875771

STIE "AUB" Surakarta

Jl. Mr. Sartono 97, Cengklik
Nusukan, Surakarta 57135
T. +62 271 854803
F. +62 271 853084

Universitas Surabaya

Jl. Raya Kalirungkut
Surabaya 60293
T. +62 31 298 1203
F. +62 31 298 1204

Universitas Muhammadiyah Gresik

Jl. Sumatra 101 GKB
Gresik 61121
T. +62 31 395 1414
F. +62 31 395 2585

Universitas Negeri Malang

Jl. Surabaya No. 6
Malang 65145
T. +62 341 585914
F. +62 341 55288

Universitas Muhammadiyah Malang

Jl. Raya Tlogomas 246
Malang 65144
T. +62 341 464318-9
F. +62 341 460782

FSEI IAIN Antasari

Jl. Ahmad Yani Km. 4,5
Banjarmasin
T. + 62 511 3265783

STIE Malangkececwara

Jl. Terusan Candi Kalasan
Malang 65142
T. +62 341 491813
F. +62 341 495619

STIESIA Surabaya

Jl. Menur Pumpungan 30
Surabaya
T. +62 31 5947505
F. +62 31 5932218

Universitas 17 Agustus 1945 Banyuwangi

Jl. Adi Sucipto 26
Banyuwangi, Jawa Timur
T. +62 333 419613
F. +62 333 419163

STIE Tri Bhakti

Jl. Teuku Umar No. 24
Cut Meutia Setiakawan,
Bekasi
T. +62 21 82429400,
82429500
F. +62 271 726156

Universitas Islam Kalimantan

Jl. Adiyaksa No. 2, Kayu
Tangi, Banjarmasin
T. + 62 511 3303871
F. + 62 511 3303871

STIKOM Bali

Jalan Puputan No. 86, Renon,
Denpasar
T. +62361 244445
F. +62361 264773

Universitas Muhammadiyah Pontianak

Fakultas Ekonomi UM
Pontianak
Jl. Ahmad Yani, No. 111,
Pontianak 78124
T. +62561 743465
F. +62561 766840

Universitas Negeri Makassar

Fakultas Ekonomi Gedung BT
Lt.2
Jl. A.P. Pettarani, Kampus
UNM, Gunungsari Baru
Makassar 90222
T. +62 411 889464 / 881244
F. +62 411 887604

STIE AAS Surakarta

Jl. Slamet Riyadi No. 361,
Kartasura, Surakarta
T. +62 271 726156
F. +62 271 726156

UPN "Veteran" Yogyakarta

Jl. Babarsari 2, Tambak Bayan
Yogyakarta
T. +62 274 485268
F. +62 274 487147

Disclaimer:

Information, opinions and recommendations contained in this document are presented by PT Reliance Securities Tbk. from sources that are considered reliable and dependable. This document is not an offer, invitation or any kind of representations to decide to buy or sell stock. Investment decisions taken based on this document is not the responsibility of PT Reliance Securities Tbk. PT Reliance Securities Tbk. reserves the right to change the contents of this document at any time without prior notice.