

## IHSG



5606.789  
38.683  
0.69%

Vol (Mn): 15931  
Val (Bn): 7001

## LQ45



931  
9.47  
1.03%

Sector Indices	Last	Change	Change %
Agriculture	1874.47	(7.83)	(0.42)
Basic Industry	593.33	4.26	0.72
Consumer	2442.21	37.54	1.54
Finance	873.90	0.00	0.00
Infrastructure	1110.03	8.11	0.73
Manufacture	1459.45	18.93	1.30
Mining	1526.93	2.58	0.17
Misc Industry	1480.94	16.82	1.14
Property	504.48	(5.88)	(1.17)
Trade	900.91	12.82	1.42

Source: relitrade next G

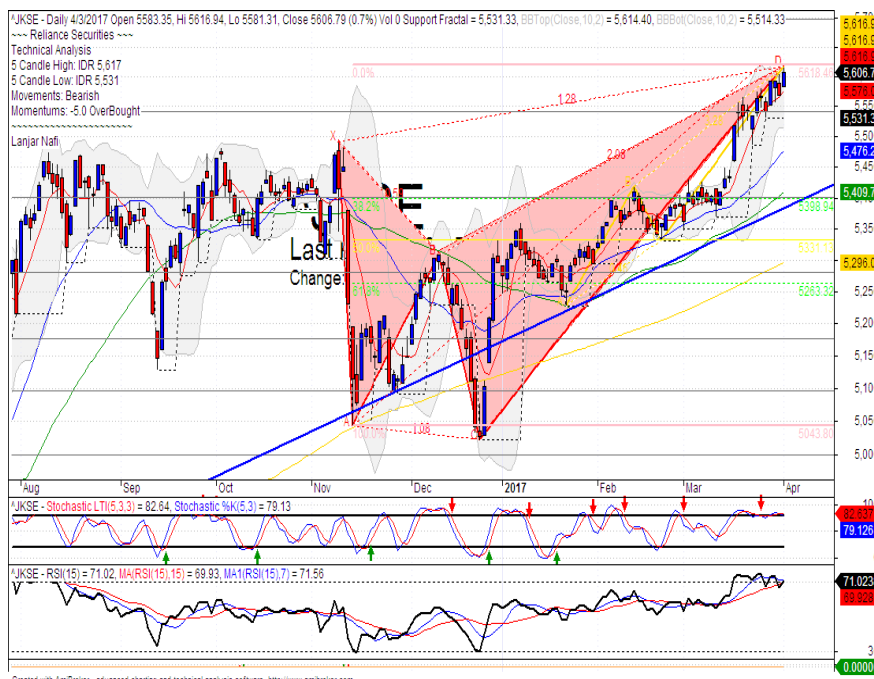
Most Active	Last	Change %	Freq
SRIL	342	(10.5)	53,180
TRAM	107	3.9	10,505
KBLI	635	21.0	9,623
BCIP	160	33.3	8,520
MYRX	135	0.0	7,327

Most Volume	Last	Change %	M share
SRIL	342	(10.5)	34,510
MYRX	135	0.0	21,669
BKSL	94	(1.1)	4,183
BWPT	296	(2.0)	2,159
RIMO	91	(4.2)	2,010

Most Value	Last	Change %	Rp Bil
SRIL	342	(10.5)	1,205.52
BBCA	16,700	0.8	324.09
ASII	8,500	(0.6)	324.03
MYRX	135	0.0	306.16
BBNI	6,350	(3.4)	305.35

Source: relitrade next G

## IHSG Technical Review



## MNCN



R3	2180
R2	2000
R1	1850
Last	1840
S1	1635
S2	1465
S3	1315

**PARTIAL SELL**

**Comment:**  
 Bearish homing pigeon candlestick pattern at resistance level. reversal signal.  
 Stochastic, dead-cross at overbought oscillator.  
 RSI bearish reversal momentum at overbought oscillator.  
 Medium term bullish trend movement.  
 Upside target to resistance level at 396. Stop-loss level if break the support level at 354.

## PTBA

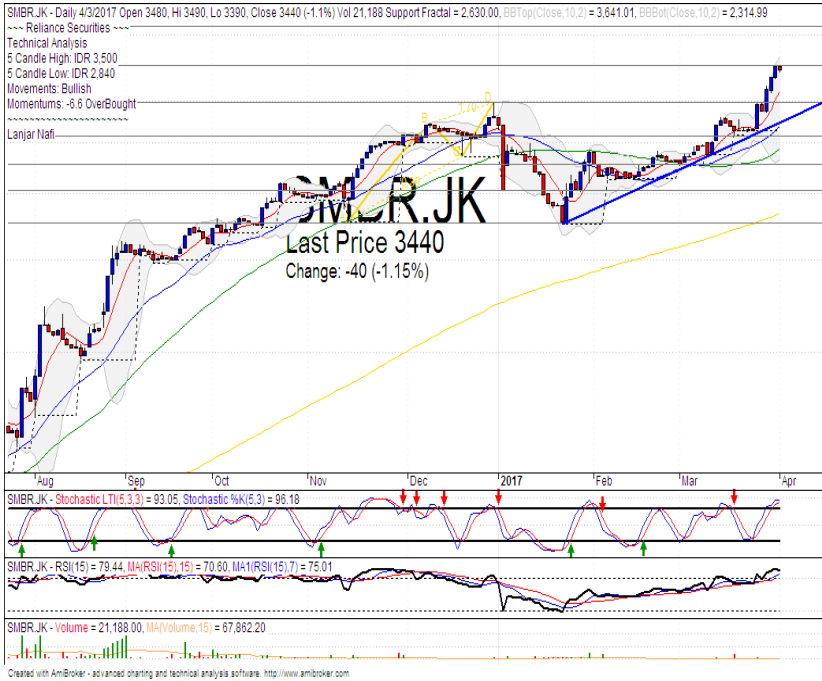


R3	18700
R2	16500
R1	14700
Last	13200
S1	13200
S2	11925
S3	10875

**PARTIAL SELL**

**Comment:**  
 Bearish meeting line candlestick pattern at resistance level.  
 Stochastic dead-cross at overbought oscillator. broad downside potential.  
 RSI bearish reversal momentum at overbought.  
 Short term bullish trend movement.  
 Stop-loss level at 1300 if confirmations the bearish signal. Downside potential until 11900 (Support level).

## SMBR



R3	5000
R2	4125
R1	3450
Last	3440
S1	2980
S2	2570
S3	2270
<b>PARTIAL SELL</b>	

**Comment:**  
 Double top candlestick pattern. Moderate trading volume.

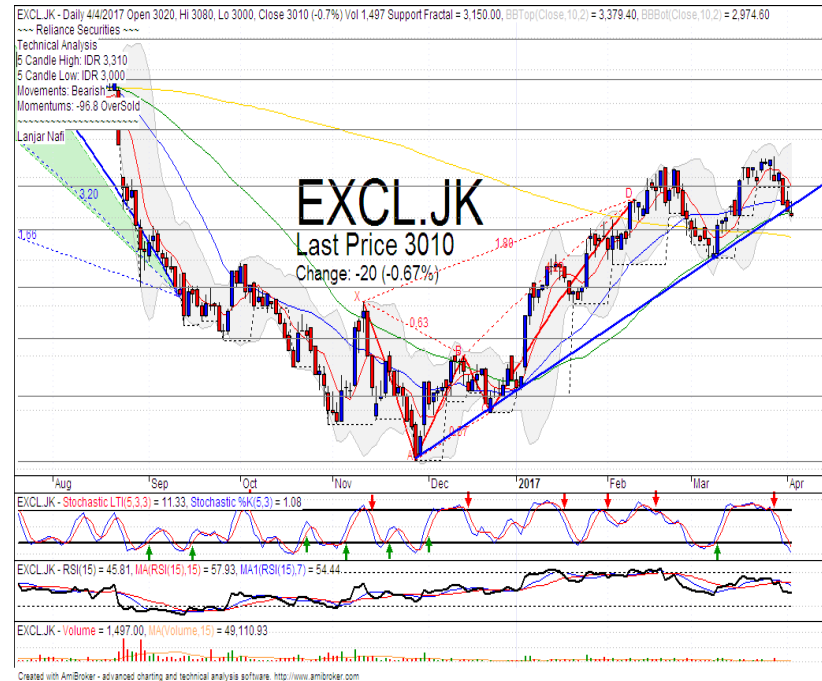
Stochastic dead-cross at overbought oscillator. Broad downside potential.

RSI bearish reversal momentum at overbought oscillator.

Medium term bullish trend movement.

Stop-loss level if broke the MA7 support level at 3120. Downside potential to MA25 at 2725.

## EXCL



R3	3740
R2	3460
R1	3155
Last	3010
S1	2940
S2	2680
S3	2470
<b>TRADING BUY</b>	

**Comment:**  
 Rebounded at lower Bollinger bands and bullish trend support level.

Stochastic golden-cross at oversold oscillator. broad upside potential.

RSI consolidations momentum at middle oscillator.

Medium term bullish trend movement.

Upside target to upper Bollinger bands at 3370. Stop-loss level if pulled back resistance level at 2970.

Stocks	S2	S1	Closing Price	R1	R2	Technical Notes	Rec	Stop Loss	Rec Buy Prc	Target Price
<b>Plantation</b>										
AALI	14,000	14,900	15,000	15,850	16,700	Consolidations	TB	15,000		15,850
LSIP	1,400	1,475	1,480	1,545	2,670	Consolidations	TB	1,440		1,545
<b>Mining</b>										
INCO	2,120	2,300	2,310	2,500	2,680	Consolidations	H	2,280		2,500
<b>Consumer</b>										
UNVR	41,000	42,500	43,875	44,000	46,000	Consolidations	H	42,000		44,000
INDF	7,250	7,900	8,000	8,500	9,125	Stoch golden-cross	TB	7,800		8,500
KLBF	1,485	1,540	1,555	1,600	1,650	Bullish momentum	H	1,530		1,580
<b>Trading</b>										
ACES	755	810	850	870	920	Consolidations	SB	800		870
AKRA	5,800	6,100	6,275	6,350	6,600	Stoch golden-cross	TB	6,300		6,625
UNTR	25,325	26,750	27,825	28,175	29,750	Consolidations	H	26,700		28,175
<b>Property &amp; Construction</b>										
LPCK	4,000	4,160	4,250	4,300	4,460	Oversold	W	4,150		
WIKA	1,990	2,200	2,390	2,400	2,600	Oversold	W	2,390		
BSDE	1,720	1,830	1,880	1,935	2,030	Overbought	PS	1,820		
WSKT	2,120	2,260	2,390	2,410	2,600	Consolidations	TB	2,250		2,410
ADHI	2,200	2,300	2,360	2,410	2,540	Consolidations	TB	2,280		2,450
<b>Basic Industry &amp; Chemical</b>										
SMGR	8,150	8,725	9,050	9,350	9,900	Rebounded at lower bollinger bands	TB	8,700		9,350
CPIN	3,000	3,210	3,240	3,400	3,580	Consolidations	H	3,200		3,480
MAIN	1,050	1,180	1,270	1,300	1,400	Bullish consolidations	TB	1,200		1,300
INTP	15,500	16,350	16,800	17,500	18,400	Overbought	PS	16,500		
<b>Miscellaneous</b>										
SRIL	270	288	308	316	350	Bearish momentum	S	284		
ASII	8,250	8,650	8,775	9,000	9,500	Overbought	H	8,600		9,000
<b>Finance</b>										
BBTN	2,100	2,200	2,280	2,360	2,480	Stoch dead-cross	S	2,180		
BMRI	11,000	11,450	11,750	11,800	12,200	Bearish momentum	S	11,400		
BTPN	2,340	2,550	2,730	2,770	3,000	Bearish momentum	PS	2,540		
BJBR	1,750	1,915	2,010	2,140	2,210	Oversold	W	2,000		
BBRI	12,350	13,000	13,025	13,500	14,250	Bullish consolidations	H	13,000		13,500
<b>Infrastructure</b>										
TLKM	3,710	3,950	4,170	4,200	4,400	Pulled back upper bollinge bands	PS	3,920		
PGAS	2,200	2,360	2,530	2,550	2,800	Consolidations	H	2,350		2,550

Source : Reliance Securities

## Analyst Conclusions:

The index has broke the short term sideways trend with gap up and reached the resistance level.

Legend :

- B: BUY (allocate till 100% of the weighted capital to accumulate, higher than 50% upside probability)
- SB: SPECULATIVE BUY (allocate 25%-50% of the weighted capital to accumulate, 25%-50% upside probability)
- W: WAIT (wait for proper entry level, do the stop-loss if necessary)
- H: HOLD (hold the portfolio position, aim for the best price to distribute)
- PS: PARTIAL SELL (distribute 25%-50% part of the portfolio, 25%-50% downside probability)
- S: SELL (distribute till 100% of the portfolio, higher than 50% downside probability)
- TB: TRADING BUY (short term or intraday trading within a tight trading range. Highly speculative).

Ticker	Resistance	Price	Support	Weekly	Weekly	Indicator			Moving Average			
	Fractal	4/3/2017	Fractal	High	Low	Stochastic	RSI	B. Band	25 Days	50 Days	200 Days	
AALI.JK	15,200	15,000	14,575	15,200	15,000	Neutral	Bearish	Neutral	Middle Bands	Under	Under	Under
ACES.JK	840	850	795	850	830	Neutral	Bullish	Neutral	Middle Bands	Upper	Upper	Under
ADHI.JK	2,420	2,360	2,330	2,420	2,390	Neutral	Bullish	Neutral	Middle Bands	Upper	Upper	Under
ADRO.JK	1,845	1,805	1,565	1,845	1,800	Neutral	Bearish	Neutral	Middle Bands	Upper	Upper	Upper
AISA.JK	2,210	2,190	2,090	2,210	2,150	Neutral	Bullish	Neutral	Middle Bands	Upper	Upper	Upper
AKRA.JK	6,750	6,275	6,250	6,750	6,300	Oversold	Bearish	Neutral	Middle Bands	Under	Under	Under
ANTM.JK	750	715	710	750	735	Neutral	Bearish	Neutral	Middle Bands	Under	Under	Under
APLN.JK	240	214	218	224	218	Neutral	Bearish	Neutral	Lower Bands	Under	Under	Under
ASII.JK	8,800	8,775	8,325	8,800	8,525	Neutral	Bearish	Neutral	Middle Bands	Upper	Upper	Upper
ASRI.JK	370	354	358	370	366	Neutral	Bearish	Neutral	Lower Bands	Under	Under	Under
BBCA.JK	15,675	16,575	15,475	17,000	16,625	Neutral	Bearish	Neutral	Middle Bands	Upper	Upper	Upper
BBKP.JK	630	630	610	635	625	Neutral	Bullish	Neutral	Middle Bands	Upper	Upper	Upper
BBNI.JK	6,950	6,450	6,350	6,775	6,475	Oversold	Bearish	Neutral	Middle Bands	Upper	Upper	Upper
BBRI.JK	13,250	13,025	12,575	13,150	12,950	Neutral	Bullish	Neutral	Middle Bands	Upper	Upper	Upper
BBTN.JK	2,360	2,280	2,230	2,320	2,290	Neutral	Bearish	Neutral	Middle Bands	Upper	Upper	Upper
BDMN.JK	5,000	4,850	4,620	5,000	4,780	Neutral	Bearish	Neutral	Middle Bands	Upper	Upper	Upper
BHIT.JK	131	127	125	131	129	Neutral	Bullish	Neutral	Lower Bands	Under	Under	Under
BJBR.JK	2,240	2,010	2,010	2,200	2,060	Oversold	Bearish	Oversold	Lower Bands	Under	Under	Under
BJTM.JK	575	750	615	840	640	Oversold	Bearish	Oversold	Upper Bands	Upper	Upper	Upper
BKSL.JK	100	94	93	100	95	Neutral	Bearish	Neutral	Middle Bands	Upper	Under	Upper
BMRI.JK	11,450	11,750	11,475	11,900	11,775	Neutral	Bearish	Neutral	Middle Bands	Upper	Upper	Upper
BMTR.JK	535	520	515	535	525	Neutral	Bearish	Neutral	Middle Bands	Under	Under	Under
BSDE.JK	1,885	1,880	1,820	1,900	1,860	Neutral	Bullish	Neutral	Middle Bands	Upper	Upper	Under
BTPN.JK	2,780	2,730	2,720	2,750	2,740	Neutral	Bearish	Neutral	Middle Bands	Upper	Upper	Upper
BWPT.JK	344	354	296	358	326	Neutral	Bullish	Neutral	Upper Bands	Upper	Upper	Upper
CMNP.JK	1,490	1,455	1,420	1,470	1,460	Neutral	Bullish	Neutral	Middle Bands	Under	Under	Under
CPIN.JK	3,210	3,240	3,180	3,340	3,270	Neutral	Bearish	Neutral	Middle Bands	Upper	Upper	Under
CSAP.JK	496	458	446	490	452	Oversold	Bullish	Oversold	Middle Bands	Under	Under	Under
CTRA.JK	1,295	1,235	1,210	1,290	1,245	Oversold	Bullish	Neutral	Middle Bands	Under	Under	Under
DILD.JK	510	418	410	422	416	Neutral	Bullish	Neutral	Middle Bands	Under	Under	Under
EXCL.JK	3,310	3,030	3,150	3,310	3,130	Neutral	Bearish	Neutral	Middle Bands	Under	Upper	Upper
GGRM.JK	66,000	66,700	64,400	67,300	65,225	Neutral	Bullish	Neutral	Upper Bands	Upper	Upper	Upper
GIAA.JK	356	352	340	354	346	Neutral	Bullish	Neutral	Upper Bands	Upper	Upper	Under
GJTL.JK	1,185	1,155	1,095	1,185	1,125	Neutral	Bearish	Neutral	Middle Bands	Under	Upper	Under
HEXA.JK	3,980	3,880	3,750	3,890	3,800	Neutral	Bullish	Neutral	Middle Bands	Under	Upper	Upper
HRUM.JK	2,750	2,470	2,080	2,750	2,530	Neutral	Bearish	Neutral	Middle Bands	Upper	Upper	Upper
ICBP.JK	8,950	8,425	8,500	8,650	8,400	Oversold	Bullish	Neutral	Middle Bands	Upper	Under	Under
IMAS.JK	1,300	1,195	1,160	1,250	1,195	Neutral	Bullish	Neutral	Middle Bands	Under	Under	Under
INCO.JK	2,410	2,310	2,270	2,420	2,330	Neutral	Bullish	Neutral	Middle Bands	Under	Under	Under
INDF.JK	8,300	8,000	7,950	8,150	8,025	Oversold	Bullish	Neutral	Middle Bands	Under	Under	Upper
INDY.JK	745	750	680	780	700	Neutral	Bullish	Neutral	Upper Bands	Upper	Upper	Upper
INTA.JK	406	382	378	394	384	Neutral	Bearish	Neutral	Middle Bands	Upper	Upper	Upper
INTP.JK	16,875	16,800	15,300	16,875	16,250	Neutral	Bearish	Neutral	Middle Bands	Upper	Upper	Upper
ITMG.JK	17,400	20,200	16,150	20,650	20,150	Neutral	Bearish	Oversold	Middle Bands	Upper	Upper	Upper
JFJA.JK	1,640	1,545	1,520	1,580	1,545	Neutral	Bullish	Neutral	Middle Bands	Under	Under	Under
JSMR.JK	4,650	4,580	4,490	4,640	4,570	Neutral	Bullish	Neutral	Middle Bands	Under	Upper	Under
KUJA.JK	322	328	320	330	324	Oversold	Bearish	Oversold	Middle Bands	Upper	Upper	Upper
KLBF.JK	1,525	1,555	1,485	1,560	1,525	Oversold	Bearish	Neutral	Upper Bands	Upper	Upper	Under
KRAS.JK	690	615	650	650	635	Oversold	Bearish	Neutral	Lower Bands	Under	Under	Under
LPCK.JK	4,430	4,250	4,190	4,430	4,270	Neutral	Bearish	Neutral	Middle Bands	Under	Under	Under
LPKR.JK	740	730	720	740	730	Neutral	Bullish	Neutral	Middle Bands	Under	Under	Under
LPPF.JK	14,350	13,500	12,900	13,850	13,200	Neutral	Bullish	Neutral	Middle Bands	Upper	Under	Under
LSIP.JK	1,505	1,480	1,410	1,505	1,465	Neutral	Bullish	Neutral	Middle Bands	Under	Under	Under
MAIN.JK	1,275	1,270	1,210	1,290	1,225	Neutral	Bearish	Neutral	Upper Bands	Upper	Upper	Under
MAPI.JK	6,025	6,150	5,675	6,250	5,850	Neutral	Bullish	Neutral	Middle Bands	Upper	Upper	Upper
MASA.JK	270	250	244	264	250	Neutral	Bullish	Neutral	Middle Bands	Upper	Upper	Upper
MNCN.JK	1,740	1,840	1,730	1,850	1,805	Oversold	Bearish	Oversold	Middle Bands	Upper	Upper	Under
MPPA.JK	1,180	1,100	1,115	1,160	1,125	Oversold	Bearish	Neutral	Middle Bands	Under	Under	Under
MTLA.JK	330	322	318	330	318	Neutral	Bullish	Neutral	Middle Bands	Under	Upper	Upper
MYOR.JK	2,160	2,100	1,985	2,160	2,100	Neutral	Bearish	Neutral	Middle Bands	Upper	Upper	Upper
PGAS.JK	2,890	2,530	2,410	2,580	2,490	Neutral	Bullish	Neutral	Middle Bands	Under	Under	Under
PTBA.JK	11,600	13,200	11,575	13,475	11,925	Oversold	Bearish	Oversold	Middle Bands	Upper	Upper	Upper
RALS.JK	1,195	1,125	1,125	1,170	1,130	Oversold	Bearish	Neutral	Middle Bands	Under	Under	Under
ROTI.JK	1,560	1,540	1,445	1,560	1,500	Neutral	Bearish	Neutral	Middle Bands	Upper	Under	Under
SCMA.JK	2,750	2,810	2,610	2,850	2,670	Neutral	Bullish	Neutral	Upper Bands	Upper	Under	Under
SCRO.JK	2,040	2,040	1,900	2,050	2,010	Oversold	Bullish	Neutral	Upper Bands	Upper	Upper	Upper
SIMP.JK	640	625	575	640	610	Oversold	Bearish	Neutral	Middle Bands	Upper	Upper	Upper
SMCB.JK	940	915	900	915	910	Neutral	Bullish	Neutral	Middle Bands	Upper	Upper	Under
SMGR.JK	9,675	9,050	8,750	9,150	9,000	Neutral	Bullish	Neutral	Middle Bands	Under	Under	Under
SMRA.JK	1,385	1,350	1,275	1,360	1,345	Neutral	Bullish	Neutral	Middle Bands	Under	Under	Under
SRIL.JK	392	308	278	392	354	Neutral	Bearish	Neutral	Middle Bands	Under	Upper	Upper
SSIA.JK	690	670	545	690	610	Oversold	Bearish	Neutral	Middle Bands	Upper	Upper	Upper
SSMS.JK	1,510	1,665	1,450	1,695	1,605	Oversold	Bearish	Oversold	Middle Bands	Upper	Upper	Upper
TLKM.JK	4,150	4,170	4,010	4,200	4,090	Neutral	Bearish	Neutral	Middle Bands	Upper	Upper	Upper
TOTL.JK	815	815	790	815	800	Neutral	Bullish	Neutral	Middle Bands	Upper	Upper	Upper
UNTR.JK	28,200	27,825	27,075	28,375	27,425	Neutral	Bearish	Neutral	Middle Bands	Upper	Upper	Upper
UNVR.JK	44,000	43,875	42,750	44,000	43,500	Neutral	Bullish	Neutral	Middle Bands	Upper	Upper	Upper

Source : Reliance Research

### Legend :

- Movement: Bullish and Bearish (Indicator Stochastic)
- Momentum: Oversold, Overbought and Neutral (Indicator RSI)
- Resistance Fractal: Strong Resistance
- Support Fractal: Strong Support
- Green: Good Conditions
- Red: Poor Conditions

## HEAD OFFICE

### Reliance Building

Jl. Pluit Sakti Raya No. 27AB,  
Pluit  
Jakarta 14450  
T. +62 21 661 7768  
F. +62 21 661 9884

## RESEARCH DIVISION

### Robertus Yanuar Hardy

*robertus@reliance-securities.com*

### Rio Adrianus

*rio.adrianus@reliance-securities.com*

### Lanjar Nafi Taulat I

*lanjar@reliance-securities.com*

### Aji Setiawan

*aji@reliance-securities.com*

### Shanti Dwi Jayanti

*santi@reliance-securities.com*

Senior Analyst

Research Analyst

Technical Research Analyst

Associate Research Analyst

Associate Research Analyst

## EQUITY DIVISION

### Jakarta- Pluit

Jl. Pluit Sakti Raya No. 27AB,  
Pluit  
Jakarta 14450  
T. +62 21 661 7768  
F. +62 21 661 9884

### Bandung

Jl.Cisangkuy No.58  
Bandung 40115  
T. +62 22 721 8200  
F. +62 22 721 9255

### Surabaya - Gubeng

Jl. Bangka No. 22  
Surabaya 60281  
T. +62 31 501 1128  
F. +62 31 503 3196

### Makassar

Jl. Boto Lempangan No. 34 J  
Makassar- Sulawesi Selatan  
T. +62 411 3632388  
F. +62 411 3614634

### Jakarta - Sudirman

Menara Batavia Ground Floor  
Jl.KH.Mas Mansyur Kav 126  
Jakarta 10220  
T. +62 21 57905455  
F. +62 21 57950728

### Tasikmalaya

Ruko Tasik Indah Plaza No.21  
Jl. KHZ Mustofa No. 345  
Tasikmalaya 46121  
T. +62 265 345000  
F. +62 265 345003

### Surabaya - Diponegoro

Jl. Diponegoro No.26D  
Surabaya 60261  
T. +62 31 567 0388  
F. +62 31 561 0528

### Medan

Jl. Teuku Amir Hamzah No.40-O  
Medan 20117  
T. +62 61 6638592  
F. +62 61 6638023

### Jakarta - Kebon Jeruk

Plaza Kebon Jeruk  
Jl.Raya Perjuangan Blok A/2  
Jakarta 11530  
T. +62 21 532 4074  
F. +62 21 536 2157

### Malang

Jl. Guntur No. 19  
Malang 65112  
T. +62 341 347 611  
F. +62 341 347 615

### Bali - Denpasar

Dewata Square Blok A3  
Jl. Letda Tantular Renon  
Denpasar 802361  
T. +62 361 225099  
F. +62 361 245099

### Tangerang

Jl. Pahlawan Seribu Ruko BSD  
Sektor 7 Blok RK kav. 9  
Tangerang 15310  
T. +62 21 5387495  
F. +62 21 5387494

### Pekanbaru

Jl. Jendral Sudirman No.73  
Pekanbaru-Riau  
T. +62 761 848414  
F. +62 761 849456

### Pontianak

Jl. MT Haryono No. 6  
Pontianak 78121  
T. +62 561 575674  
F. +62 561 575670

### Jakarta - Centro

Ruko Centro Residence Kav. 4-5  
Tower C Lt. 1 No. 26-29  
Jl. Macan, Daan Mogot  
Jakarta 14450  
T. +62 21 56945227  
F. +62 21 56945226

### Solo

Jl. Slamet Riyadi 330<sup>a</sup>  
Solo 57145  
T. +62 271 736599  
F. +62 271 733478

### Balikpapan

Ruko Bukit Damai Indah  
Blok I, No. 3, Rt.34  
Jl. MT. Haryono, Gunung  
Bahagia, Balikpapan Selatan  
76114  
T. +62 542 746313  
F. +62 542 746317

## IDX CORNER & INVESTMENT GALLERY

### President University

Resto Plaza 1F - Jababeka  
Education Park  
Jl. Ki Hajar Dewantara Raya  
Cikarang - Bekasi 17550  
T. +62 21 89106030

### Universitas Siliwangi Tasikmalaya

Jl. Siliwangi No. 24  
Tasikmalaya 46151  
T. +62 265 323685  
F. +62 265 323534

### Politeknik Kediri

Jl. Mayor Bismo No. 27  
Kediri 64121  
T. +62 354 683128  
F. +62 354 683128

### Universitas Muhammadiyah Sidoarjo

Jl. Majapahit 666 B  
Sidoarjo, Jawa Timur  
T. +62 31 8945444  
F. +62 31 8949333

### Universitas Tanjungpura Pontianak

Jl. Jendral Ahmad Yani  
Pontianak 78124  
T. +62 561 743465  
F. +62 561 766840

### Universitas Pesantren Tinggi Darul Ulum

Kompleks Pp Darul Ulu,  
Peterongan  
Jombang, Jawa Timur 60281  
T. +62 321 873655  
F. +62 321 875771

### STIE "AUB" Surakarta

Jl. Mr. Sartono 97, Cengklik  
Nusukan, Surakarta 57135  
T. +62 271 854803  
F. +62 271 853084

### Universitas Surabaya

Jl. Raya Kalirungkut  
Surabaya 60293  
T. +62 31 298 1203  
F. +62 31 298 1204

### Universitas Muhammadiyah Gresik

Jl. Sumatra 101 GKB  
Gresik 61121  
T. +62 31 395 1414  
F. +62 31 395 2585

### Universitas Negeri Malang

Jl. Surabaya No. 6  
Malang 65145  
T. +62 341 585914  
F. +62 341 55288

### Universitas Muhammadiyah Malang

Jl. Raya Tlogomas 246  
Malang 65144  
T. +62 341 464318-9  
F. +62 341 460782

### FSEI IAIN Antasari

Jl. Ahmad Yani Km. 4,5  
Banjarmasin  
T. + 62 511 3265783

### STIE Malangkececwara

Jl. Terusan Candi Kalasan  
Malang 65142  
T. +62 341 491813  
F. +62 341 495619

### STIESIA Surabaya

Jl. Menur Pumpungan 30  
Surabaya  
T. +62 31 5947505  
F. +62 31 5932218

### Universitas 17 Agustus 1945 Banyuwangi

Jl. Adi Sucipto 26  
Banyuwangi, Jawa Timur  
T. +62 333 419613  
F. +62 333 419163

### STIE Tri Bhakti

Jl. Teuku Umar No. 24  
Cut Meutia Setiakawan,  
Bekasi  
T. +62 21 82429400,  
82429500  
F. +62 271 726156

### Universitas Islam Kalimantan

Jl. Adiyaksa No. 2, Kayu  
Tangi, Banjarmasin  
T. + 62 511 3303871  
F. + 62 511 3303871

### STIKOM Bali

Jalan Puputan No. 86, Renon,  
Denpasar  
T. +62361 244445  
F. +62361 264773

### Universitas Muhammadiyah Pontianak

Fakultas Ekonomi UM  
Pontianak  
Jl. Ahmad Yani, No. 111,  
Pontianak 78124  
T. +62561 743465  
F. +62561 766840

### Universitas Negeri Makassar

Fakultas Ekonomi Gedung BT  
Lt.2  
Jl. A.P. Pettarani, Kampus  
UNM, Gunungsari Baru  
Makassar 90222  
T. +62 411 889464 / 881244  
F. +62 411 887604

### STIE AAS Surakarta

Jl. Slamet Riyadi No. 361,  
Kartasura, Surakarta  
T. +62 271 726156  
F. +62 271 726156

### UPN "Veteran" Yogyakarta

Jl. Babarsari 2, Tambak Bayan  
Yogyakarta  
T. +62 274 485268  
F. +62 274 487147

### Disclaimer:

Information, opinions and recommendations contained in this document are presented by PT Reliance Securities Tbk. from sources that are considered reliable and dependable. This document is not an offer, invitation or any kind of representations to decide to buy or sell stock. Investment decisions taken based on this document is not the responsibility of PT Reliance Securities Tbk. PT Reliance Securities Tbk. reserves the right to change the contents of this document at any time without prior notice.