

IHSG



5651.823
45.034
0.80%

Vol (Mn): 7488
Val (Bn): 3636

LQ45



940.865
9.865
1.06%

Sector Indices	Last	Change	Change %
Agriculture	1868.58	(5.89)	(0.31)
Basic Industry	601.10	7.77	1.29
Consumer	2458.29	16.08	0.65
Finance	876.81	2.91	0.33
Infrastructure	1122.32	12.29	1.09
Manufacture	1468.77	9.32	0.63
Mining	1581.68	54.75	3.46
Misc Industry	1479.20	(1.74)	(0.12)
Property	504.33	(0.15)	(0.03)
Trade	914.93	14.02	1.53

Source: relitrade next G

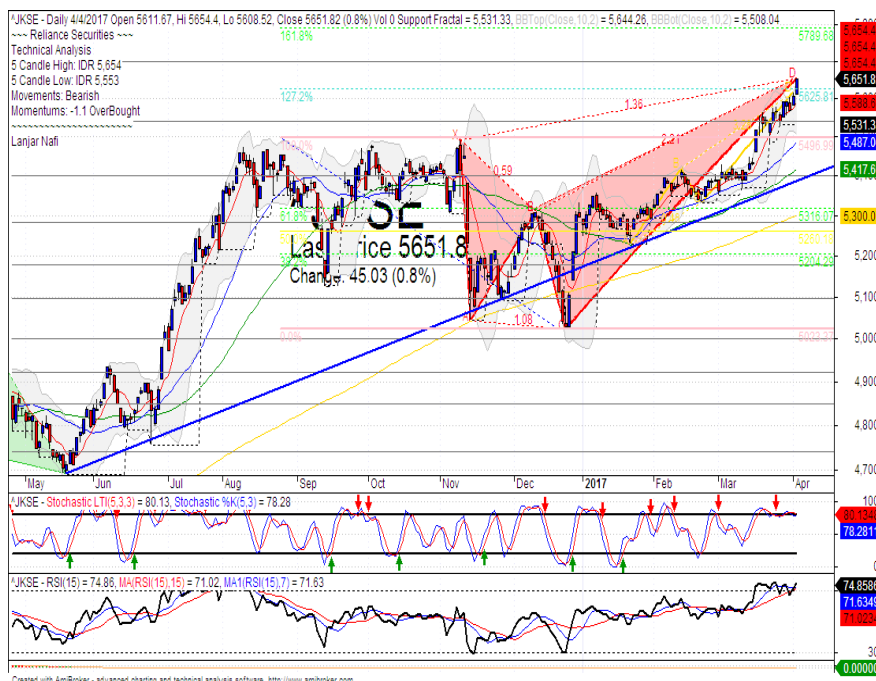
Most Active	Last	Change %	Freq
BUMI	414	24.0	28,273
SRIL	312	1.3	8,213
BAPA	110	(6.8)	8,208
INPC	95	2.2	7,339
KBLI	640	(10.5)	6,893

Most Volume	Last	Change %	M share
BUMI	414	24.0	23,929
MYRX	139	2.2	17,085
DEWA	76	16.9	11,700
BRMS	85	11.8	7,843
BIPI	124	14.8	6,799

Most Value	Last	Change %	Rp Bil
BUMI	414	24.0	932.75
TLKM	4,250	1.9	458.74
ASII	8,775	0.0	292.34
BBCA	16,750	1.1	249.08
MYRX	139	2.2	235.87

Source: relitrade next G

IHSG Technical Review



R3	6030
R2	5860
R1	5700
Last	5651.82
S1	5540
S2	5400
S3	5280

Comment:
Reached the ideal target of butterfly harmonic pattern. Moderate trading volume.

Stochastic, dead-cross at overbought oscillator.

RSI bearish reversal momentum at overbought oscillator.

Long term bullish trend movement.

Stop-loss level if confirmations the harmonic pattern with broke the MA7 at 5588. Downside potential until 5487.

EXCL



R3	3740
R2	3450
R1	3150
Last	3090
S1	2940
S2	2680
S3	2460
SPECULATIVE BUY	

Comment:

Bullish engulfing candlestick pattern at bullish trend support level.

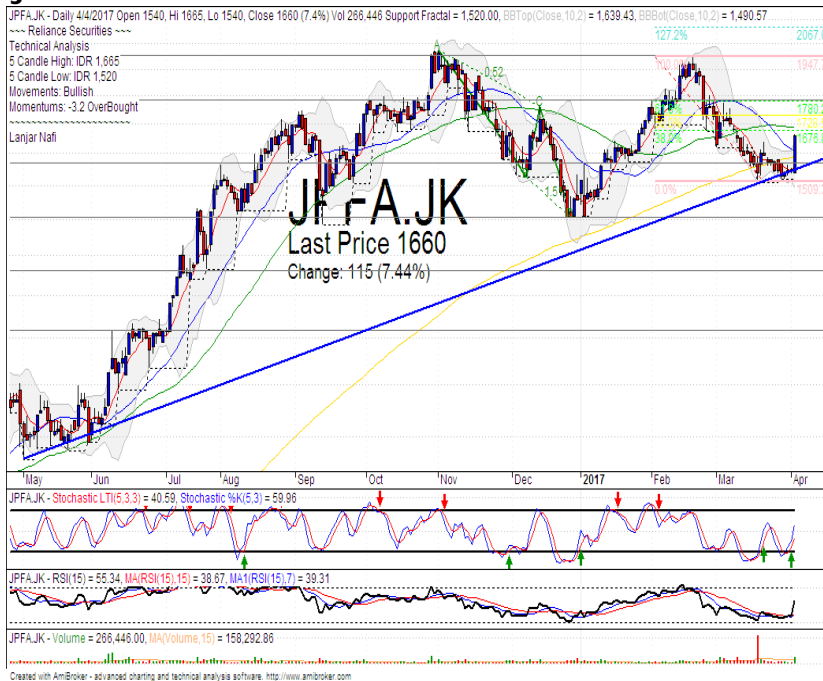
Stochastic, golden-cross at oversold oscillator.

RSI consolidations momentum at middle oscillator.

Medium term bullish trend movement.

Upside target to upper bands resistance level at 3360. Stop-loss level if break the bullish support level at 3000.

JPPFA



R3	2220
R2	1955
R1	1780
Last	1660
S1	1575
S2	1400
S3	1260
HOLD	

Comment:

Bullish break away and reached the 38.2% golden ratios. Huge trading volume. Reversal signal.

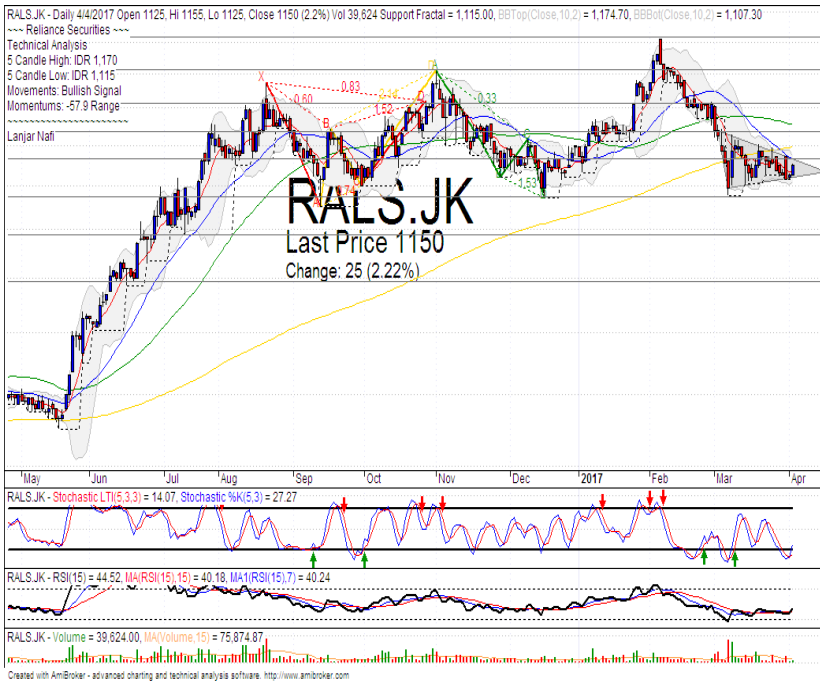
Stochastic bullish movement after golden-cross at middle oscillator. Broad downside potential.

RSI bullish reversal momentum at oversold.

Long term bullish trend movement.

Upside target to 1780. Stop-loss level at 1560 if broke the bullish trend support level.

RALS



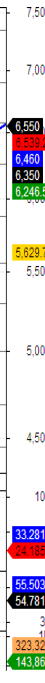
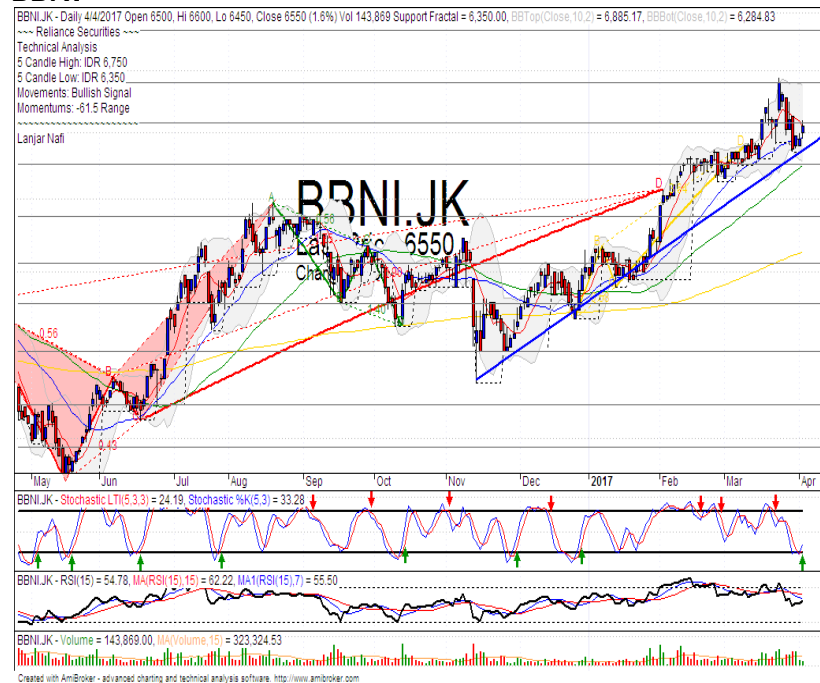
R3	1315
R2	1235
R1	1165
Last	1150
S1	1070
S2	985
S3	895

TRADING BUY

Comment:
Triangle pattern with broke the upper bound potential.
Stochastic golden-cross at oversold oscillator. Broad upside potential.
RSI bullish reversal momentum at oversold oscillator.
Short term bullish and bearish trend movement.

Upside target to MA50 at 1255. Stop-loss level if broke the lower bound support level at 1100.

BBNI



R3	7350
R2	6900
R1	6575
Last	6550
S1	6250
S2	5875
S3	5550

SPECULATIVE BUY

Comment:
Rebounded at bullish trend support level. Reversal signal.
Stochastic golden-cross at oversold oscillator. broad upside potential.
RSI consolidations momentum at middle oscillator.
Medium term bullish trend movement.

Upside target to upper Bollinger bands at 6900. Stop-loss level if broke the bullish trend support level at 6350.

Stocks	S2	S1	Closing Price	R1	R2	Technical Notes	Rec	Stop Loss	Rec Buy Prc	Target Price
Plantation										
AALI	14,000	14,900	15,000	15,850	16,700	Consolidations	TB	15,000		15,850
LSIP	1,400	1,475	1,475	1,545	2,670	Consolidations	TB	1,440		1,545
Mining										
INCO	2,120	2,300	2,280	2,500	2,680	Oversold	TB	2,280		2,500
Consumer										
UNVR	42,500	44,000	44,275	46,000	47,800	Consolidations	H	44,000		45,000
INDF	7,250	7,900	8,075	8,500	9,125	Stoch golden-cross	SB	7,800	8,050	8,500
KLBF	1,485	1,540	1,600	1,600	1,650	Overbought	H	1,550		1,650
Trading										
ACES	810	870	890	920	970	Overbought	H	860		920
AKRA	6,100	6,350	6,475	6,600	7,000	Stoch golden-cross	TB	6,400		6,600
UNTR	26,750	28,175	29,150	29,750	31,500	Northern star	PS	29,000		
Property & Construction										
LPCK	4,000	4,160	4,260	4,300	4,460	Oversold	W	4,150		
WIKA	1,990	2,200	2,360	2,400	2,600	Oversold	W	2,300		
BSDE	1,720	1,830	1,880	1,935	2,030	Overbought	PS	1,820		
WSKT	2,120	2,260	2,380	2,410	2,600	Stoch golden-cross	TB	2,250		2,470
ADHI	2,200	2,300	2,340	2,410	2,540	Bearish momentum	PS	2,280		
Basic Industry & Chemical										
SMGR	8,150	8,725	9,125	9,350	9,900	Bullish momentum	SB	8,700	9,100	9,350
CPIN	3,000	3,210	3,350	3,400	3,580	Consolidations	H	3,200		3,480
MAIN	1,180	1,300	1,310	1,400	1,500	Bullish consolidations	SB	1,290		1,400
INTP	15,500	16,350	16,975	17,500	18,400	Overbought	H	16,500		17,500
Miscellaneous										
SRIL	270	288	312	316	350	Arrived at MA50	TB	284		380
ASII	8,250	8,650	8,775	9,000	9,500	Bearish meeting line	PS	8,600		
Finance										
BBTN	2,100	2,200	2,280	2,360	2,480	Consolidations	S	2,180		
BMRI	11,000	11,450	11,750	11,800	12,200	Consolidations	W	11,400		
BTPN	2,340	2,550	2,620	2,770	3,000	Oversold	W	2,540		
BJBR	1,750	1,915	2,030	2,140	2,210	Oversold	TB	2,000		2,140
BBRI	12,350	13,000	13,025	13,500	14,250	Bullish consolidations	H	13,000		13,500
Infrastructure										
TLKM	3,950	4,200	4,250	4,400	4,580	Overbought	H	4,100		4,400
PGAS	2,200	2,360	2,490	2,550	2,800	Stoch dead-cross	PS	2,350		

Source : Reliance Securities

Analyst Conclusions:

The index reached the all time high level. Be care full from distributions phase.

Legend :

- B: BUY (allocate till 100% of the weighted capital to accumulate, higher than 50% upside probability)
- SB: SPECULATIVE BUY (allocate 25%-50% of the weighted capital to accumulate, 25%-50% upside probability)
- W: WAIT (wait for proper entry level, do the stop-loss if necessary)
- H: HOLD (hold the portfolio position, aim for the best price to distribute)
- PS: PARTIAL SELL (distribute 25%-50% part of the portfolio, 25%-50% downside probability)
- S: SELL (distribute till 100% of the portfolio, higher than 50% downside probability)
- TB: TRADING BUY (short term or intraday trading within a tight trading range. Highly speculative).

Ticker	Resistance	Price	Support	Weekly	Weekly	Indicator			Moving Average			
	Fractal	4/4/2017	Fractal	High	Low	Stochastic	RSI	B. Band	25 Days	50 Days	200 Days	
AALI.JK	15,200	15,000	14,575	15,200	15,050	Neutral	Bearish	Neutral	Middle Bands	Under	Under	Under
ACES.JK	840	890	815	890	835	Neutral	Bullish	Overbought	Upper Bands	Upper	Upper	Upper
ADHI.JK	2,420	2,340	2,330	2,420	2,370	Neutral	Bearish	Neutral	Middle Bands	Upper	Upper	Under
ADRO.JK	1,845	1,930	1,750	1,940	1,815	Neutral	Bullish	Overbought	Upper Bands	Upper	Upper	Upper
AISA.JK	2,210	2,210	2,090	2,250	2,150	Neutral	Bullish	Neutral	Middle Bands	Upper	Upper	Upper
AKRA.JK	6,750	6,475	6,175	6,500	6,300	Neutral	Bullish	Neutral	Middle Bands	Upper	Under	Under
ANTM.JK	750	720	710	750	730	Neutral	Bearish	Neutral	Middle Bands	Under	Under	Under
APLN.JK	240	212	218	224	216	Neutral	Bearish	Neutral	Lower Bands	Under	Under	Under
ASII.JK	8,800	8,775	8,325	8,925	8,725	Neutral	Bearish	Neutral	Middle Bands	Upper	Upper	Upper
ASRI.JK	370	356	358	370	360	Neutral	Bearish	Neutral	Lower Bands	Under	Under	Under
BBCA.JK	17,000	16,750	16,550	17,000	16,825	Neutral	Bearish	Overbought	Middle Bands	Upper	Upper	Upper
BBKP.JK	630	625	620	635	625	Neutral	Bearish	Neutral	Middle Bands	Upper	Upper	Under
BBNI.JK	6,950	6,550	6,350	6,750	6,475	Neutral	Bullish	Neutral	Middle Bands	Upper	Upper	Upper
BBRI.JK	13,250	13,025	12,575	13,150	12,950	Neutral	Bullish	Neutral	Middle Bands	Upper	Upper	Upper
BBTN.JK	2,360	2,280	2,230	2,320	2,290	Neutral	Bearish	Neutral	Middle Bands	Upper	Upper	Upper
BDMN.JK	5,000	4,920	4,700	5,000	4,900	Neutral	Bearish	Neutral	Middle Bands	Upper	Upper	Upper
BHIT.JK	131	127	125	130	128	Neutral	Bullish	Neutral	Middle Bands	Under	Under	Under
BJBR.JK	2,240	2,030	2,010	2,150	2,050	Overbought	Bearish	Overbought	Middle Bands	Under	Under	Upper
BJTM.JK	575	740	615	840	640	Neutral	Bearish	Overbought	Upper Bands	Upper	Upper	Upper
BKSL.JK	100	93	91	100	95	Neutral	Bearish	Neutral	Middle Bands	Under	Under	Under
BMRI.JK	11,450	11,750	11,475	11,950	11,775	Neutral	Bearish	Neutral	Middle Bands	Upper	Upper	Upper
BMTR.JK	535	520	515	530	525	Neutral	Bearish	Neutral	Middle Bands	Under	Under	Under
BSDE.JK	1,885	1,880	1,820	1,900	1,860	Neutral	Bullish	Neutral	Middle Bands	Upper	Upper	Under
BTPN.JK	2,780	2,620	2,720	2,750	2,650	Neutral	Bearish	Neutral	Lower Bands	Under	Under	Under
BWPT.JK	344	342	296	358	326	Neutral	Bullish	Neutral	Middle Bands	Upper	Under	Upper
CMNP.JK	1,490	1,455	1,420	1,470	1,455	Neutral	Bullish	Neutral	Middle Bands	Under	Under	Under
CPIN.JK	3,210	3,350	3,200	3,380	3,270	Neutral	Bearish	Neutral	Middle Bands	Upper	Upper	Under
CSAP.JK	496	458	446	462	452	Neutral	Bullish	Overbought	Middle Bands	Under	Under	Under
CTRA.JK	1,295	1,215	1,210	1,275	1,235	Overbought	Bullish	Neutral	Lower Bands	Under	Under	Under
DILD.JK	510	418	406	422	416	Neutral	Bullish	Neutral	Middle Bands	Under	Under	Under
EXCL.JK	3,310	3,090	3,150	3,310	3,120	Overbought	Bearish	Neutral	Middle Bands	Upper	Upper	Upper
GGRM.JK	66,000	67,700	64,400	67,725	65,500	Neutral	Bullish	Neutral	Upper Bands	Upper	Upper	Upper
GIAA.JK	356	348	340	354	346	Neutral	Bullish	Neutral	Middle Bands	Upper	Upper	Under
GJTL.JK	1,185	1,140	1,100	1,185	1,140	Neutral	Bullish	Neutral	Middle Bands	Under	Upper	Under
HEXA.JK	3,980	3,880	3,750	3,900	3,800	Neutral	Bullish	Neutral	Middle Bands	Under	Upper	Upper
HRUM.JK	2,750	2,630	2,530	2,750	2,530	Neutral	Bearish	Neutral	Middle Bands	Upper	Upper	Upper
ICBP.JK	8,950	8,400	8,150	8,575	8,400	Overbought	Bullish	Neutral	Middle Bands	Under	Under	Under
IMAS.JK	1,300	1,180	1,160	1,240	1,195	Neutral	Bullish	Neutral	Middle Bands	Under	Under	Under
INCO.JK	2,410	2,280	2,270	2,420	2,330	Neutral	Bearish	Neutral	Middle Bands	Under	Under	Under
INDF.JK	8,300	8,075	7,950	8,150	8,025	Neutral	Bullish	Neutral	Middle Bands	Upper	Upper	Upper
INDY.JK	745	775	680	805	710	Neutral	Bullish	Neutral	Upper Bands	Upper	Upper	Upper
INTA.JK	406	414	378	416	384	Neutral	Bullish	Overbought	Upper Bands	Upper	Upper	Upper
INTP.JK	16,875	16,975	15,300	16,975	16,800	Overbought	Bullish	Overbought	Middle Bands	Upper	Upper	Upper
ITMG.JK	17,400	22,200	16,150	22,300	20,150	Neutral	Bullish	Overbought	Upper Bands	Upper	Upper	Upper
JFJA.JK	1,640	1,660	1,520	1,665	1,545	Neutral	Bullish	Neutral	Upper Bands	Upper	Under	Under
JSMR.JK	4,650	4,710	4,490	4,710	4,590	Neutral	Bullish	Neutral	Middle Bands	Upper	Upper	Under
KUJA.JK	322	332	320	332	326	Overbought	Bearish	Overbought	Upper Bands	Upper	Upper	Upper
KLBF.JK	1,525	1,600	1,485	1,600	1,540	Overbought	Bearish	Neutral	Upper Bands	Upper	Upper	Upper
KRAS.JK	690	600	650	645	620	Overbought	Bearish	Overbought	Lower Bands	Under	Under	Under
LPCK.JK	4,430	4,260	4,190	4,430	4,270	Neutral	Bullish	Neutral	Middle Bands	Under	Under	Under
LPKR.JK	740	735	720	740	730	Neutral	Bullish	Neutral	Middle Bands	Upper	Under	Under
LPPF.JK	14,350	13,125	12,900	13,650	13,200	Neutral	Bullish	Neutral	Middle Bands	Under	Under	Under
LSIP.JK	1,505	1,475	1,410	1,505	1,475	Neutral	Bullish	Neutral	Middle Bands	Under	Under	Under
MAIN.JK	1,275	1,310	1,210	1,335	1,245	Neutral	Bullish	Neutral	Upper Bands	Upper	Upper	Under
MAPI.JK	6,025	6,150	5,675	6,250	5,850	Neutral	Bullish	Neutral	Middle Bands	Upper	Upper	Upper
MASA.JK	270	254	244	270	250	Neutral	Bullish	Neutral	Middle Bands	Upper	Upper	Upper
MNCN.JK	1,850	1,835	1,730	1,850	1,810	Overbought	Bearish	Neutral	Middle Bands	Upper	Upper	Under
MPPA.JK	1,180	1,095	1,115	1,135	1,105	Overbought	Bullish	Neutral	Lower Bands	Under	Under	Under
MTLA.JK	330	320	318	330	318	Neutral	Bearish	Neutral	Middle Bands	Under	Upper	Upper
MYOR.JK	2,160	2,090	2,050	2,160	2,100	Neutral	Bearish	Neutral	Middle Bands	Under	Upper	Upper
PGAS.JK	2,580	2,490	2,410	2,580	2,540	Neutral	Bearish	Neutral	Middle Bands	Under	Under	Under
PTBA.JK	11,600	13,850	11,575	14,200	12,350	Overbought	Bearish	Overbought	Upper Bands	Upper	Upper	Upper
RALS.JK	1,170	1,150	1,115	1,170	1,130	Overbought	Bullish	Neutral	Middle Bands	Under	Under	Under
ROTI.JK	1,560	1,550	1,445	1,560	1,540	Overbought	Bearish	Neutral	Middle Bands	Upper	Upper	Under
SCMA.JK	2,750	2,910	2,610	2,920	2,700	Overbought	Bullish	Neutral	Upper Bands	Upper	Upper	Upper
SCRO.JK	2,040	2,050	1,900	2,060	2,040	Overbought	Bearish	Neutral	Upper Bands	Upper	Upper	Upper
SIMP.JK	640	630	575	640	630	Neutral	Bearish	Neutral	Middle Bands	Upper	Upper	Upper
SMCB.JK	940	915	900	915	910	Neutral	Bullish	Neutral	Middle Bands	Upper	Upper	Under
SMGR.JK	9,675	9,125	8,750	9,150	9,000	Neutral	Bullish	Neutral	Middle Bands	Under	Under	Under
SMRA.JK	1,385	1,375	1,275	1,375	1,345	Neutral	Bullish	Neutral	Middle Bands	Upper	Upper	Under
SRIL.JK	392	312	278	392	316	Neutral	Bearish	Neutral	Middle Bands	Under	Upper	Upper
SSIA.JK	690	695	545	705	675	Overbought	Bearish	Overbought	Middle Bands	Upper	Upper	Upper
SSMS.JK	1,510	1,720	1,450	1,735	1,660	Overbought	Bullish	Overbought	Middle Bands	Upper	Upper	Upper
TLKM.JK	4,150	4,250	4,010	4,290	4,150	Neutral	Bearish	Overbought	Upper Bands	Upper	Upper	Upper
TOTL.JK	815	815	790	815	800	Neutral	Bullish	Neutral	Middle Bands	Upper	Upper	Upper
UNTR.JK	28,200	29,150	26,500	29,450	27,900	Neutral	Bullish	Neutral	Upper Bands	Upper	Upper	Upper
UNVR.JK	44,000	44,275	42,750	44,275	43,500	Neutral	Bullish	Neutral	Middle Bands	Upper	Upper	Upper

Source : Reliance Research

Legend :

- Movement: Bullish and Bearish (Indicator Stochastic)
- Momentum: Oversold, Overbought and Neutral (Indicator RSI)
- Resistance Fractal: Strong Resistance
- Support Fractal: Strong Support
- Green: Good Conditions
- Red: Poor Conditions

HEAD OFFICE

Reliance Building

Jl. Pluit Sakti Raya No. 27AB,
Pluit
Jakarta 14450
T. +62 21 661 7768
F. +62 21 661 9884

RESEARCH DIVISION

Robertus Yanuar Hardy

robertus@reliance-securities.com

Rio Adrianus

rio.adrianus@reliance-securities.com

Lanjar Nafi Taulat I

lanjar@reliance-securities.com

Aji Setiawan

aji@reliance-securities.com

Shanti Dwi Jayanti

santi@reliance-securities.com

Senior Analyst

Research Analyst

Technical Research Analyst

Associate Research Analyst

Associate Research Analyst

EQUITY DIVISION

Jakarta- Pluit

Jl. Pluit Sakti Raya No. 27AB,
Pluit
Jakarta 14450
T. +62 21 661 7768
F. +62 21 661 9884

Bandung

Jl.Cisangkuy No.58
Bandung 40115
T. +62 22 721 8200
F. +62 22 721 9255

Surabaya - Gubeng

Jl. Bangka No. 22
Surabaya 60281
T. +62 31 501 1128
F. +62 31 503 3196

Makassar

Jl. Boto Lempangan No. 34 J
Makassar- Sulawesi Selatan
T. +62 411 3632388
F. +62 411 3614634

Jakarta - Sudirman

Menara Batavia Ground Floor
Jl.KH.Mas Mansyur Kav 126
Jakarta 10220
T. +62 21 57905455
F. +62 21 57950728

Tasikmalaya

Ruko Tasik Indah Plaza No.21
Jl. KHZ Mustofa No. 345
Tasikmalaya 46121
T. +62 265 345000
F. +62 265 345003

Surabaya - Diponegoro

Jl. Diponegoro No.26D
Surabaya 60261
T. +62 31 567 0388
F. +62 31 561 0528

Medan

Jl. Teuku Amir Hamzah No.40-O
Medan 20117
T. +62 61 6638592
F. +62 61 6638023

Jakarta - Kebon Jeruk

Plaza Kebon Jeruk
Jl.Raya Perjuangan Blok A/2
Jakarta 11530
T. +62 21 532 4074
F. +62 21 536 2157

Malang

Jl. Guntur No. 19
Malang 65112
T. +62 341 347 611
F. +62 341 347 615

Bali - Denpasar

Dewata Square Blok A3
Jl. Letda Tantular Renon
Denpasar 802361
T. +62 361 225099
F. +62 361 245099

Tangerang

Jl. Pahlawan Seribu Ruko BSD
Sektor 7 Blok RK kav. 9
Tangerang 15310
T. +62 21 5387495
F. +62 21 5387494

Pekanbaru

Jl. Jendral Sudirman No.73
Pekanbaru-Riau
T. +62 761 848414
F. +62 761 849456

Pontianak

Jl. MT Haryono No. 6
Pontianak 78121
T. +62 561 575674
F. +62 561 575670

Jakarta - Centro

Ruko Centro Residence Kav. 4-5
Tower C Lt. 1 No. 26-29
Jl. Macan, Daan Mogot
Jakarta 14450
T. +62 21 56945227
F. +62 21 56945226

Solo

Jl. Slamet Riyadi 330^a
Solo 57145
T. +62 271 736599
F. +62 271 733478

Balikpapan

Ruko Bukit Damai Indah
Blok I, No. 3, Rt.34
Jl. MT. Haryono, Gunung
Bahagia, Balikpapan Selatan
76114
T. +62 542 746313
F. +62 542 746317

IDX CORNER & INVESTMENT GALLERY

President University

Resto Plaza 1F - Jababeka
Education Park
Jl. Ki Hajar Dewantara Raya
Cikarang - Bekasi 17550
T. +62 21 89106030

Universitas Siliwangi Tasikmalaya

Jl. Siliwangi No. 24
Tasikmalaya 46151
T. +62 265 323685
F. +62 265 323534

Politeknik Kediri

Jl. Mayor Bismo No. 27
Kediri 64121
T. +62 354 683128
F. +62 354 683128

Universitas Muhammadiyah Sidoarjo

Jl. Majapahit 666 B
Sidoarjo, Jawa Timur
T. +62 31 8945444
F. +62 31 8949333

Universitas Tanjungpura Pontianak

Jl. Jendral Ahmad Yani
Pontianak 78124
T. +62 561 743465
F. +62 561 766840

Universitas Pesantren Tinggi Darul Ulum

Kompleks Pp Darul Ulu,
Peterongan
Jombang, Jawa Timur 60281
T. +62 321 873655
F. +62 321 875771

STIE "AUB" Surakarta

Jl. Mr. Sartono 97, Cengklik
Nusukan, Surakarta 57135
T. +62 271 854803
F. +62 271 853084

Universitas Surabaya

Jl. Raya Kalirungkut
Surabaya 60293
T. +62 31 298 1203
F. +62 31 298 1204

Universitas Muhammadiyah Gresik

Jl. Sumatra 101 GKB
Gresik 61121
T. +62 31 395 1414
F. +62 31 395 2585

Universitas Negeri Malang

Jl. Surabaya No. 6
Malang 65145
T. +62 341 585914
F. +62 341 55288

Universitas Muhammadiyah Malang

Jl. Raya Tlogomas 246
Malang 65144
T. +62 341 464318-9
F. +62 341 460782

FSEI IAIN Antasari

Jl. Ahmad Yani Km. 4,5
Banjarmasin
T. + 62 511 3265783

STIE Malangkececwara

Jl. Terusan Candi Kalasan
Malang 65142
T. +62 341 491813
F. +62 341 495619

STIESIA Surabaya

Jl. Menur Pumpungan 30
Surabaya
T. +62 31 5947505
F. +62 31 5932218

Universitas 17 Agustus 1945 Banyuwangi

Jl. Adi Sucipto 26
Banyuwangi, Jawa Timur
T. +62 333 419613
F. +62 333 419163

STIE Tri Bhakti

Jl. Teuku Umar No. 24
Cut Meutia Setiakawan,
Bekasi
T. +62 21 82429400,
82429500
F. +62 271 726156

Universitas Islam Kalimantan

Jl. Adiyaksa No. 2, Kayu
Tangi, Banjarmasin
T. + 62 511 3303871
F. + 62 511 3303871

STIKOM Bali

Jalan Puputan No. 86, Renon,
Denpasar
T. +62361 244445
F. +62361 264773

Universitas Muhammadiyah Pontianak

Fakultas Ekonomi UM
Pontianak
Jl. Ahmad Yani, No. 111,
Pontianak 78124
T. +62561 743465
F. +62561 766840

Universitas Negeri Makassar

Fakultas Ekonomi Gedung BT
Lt.2
Jl. A.P. Pettarani, Kampus
UNM, Gunungsari Baru
Makassar 90222
T. +62 411 889464 / 881244
F. +62 411 887604

STIE AAS Surakarta

Jl. Slamet Riyadi No. 361,
Kartasura, Surakarta
T. +62 271 726156
F. +62 271 726156

UPN "Veteran" Yogyakarta

Jl. Babarsari 2, Tambak Bayan
Yogyakarta
T. +62 274 485268
F. +62 274 487147

Disclaimer:

Information, opinions and recommendations contained in this document are presented by PT Reliance Securities Tbk. from sources that are considered reliable and dependable. This document is not an offer, invitation or any kind of representations to decide to buy or sell stock. Investment decisions taken based on this document is not the responsibility of PT Reliance Securities Tbk. PT Reliance Securities Tbk. reserves the right to change the contents of this document at any time without prior notice.