

IHSG



5653.49
-26.753
-0.47%

Vol (Mn): 15702
Val (Bn): 7015

LQ45



937.24
-7.72
-0.82%

Sector Indices	Last	Change	Change %
Agriculture	1883.05	10.34	0.55
Basic Industry	610.62	(4.41)	(0.72)
Consumer	2453.09	(11.65)	(0.47)
Finance	891.78	(6.71)	(0.75)
Infrastructure	1097.16	(10.87)	(0.99)
Manufacture	1466.45	(11.12)	(0.76)
Mining	1548.08	(20.14)	(1.30)
Misc Industry	1452.33	(24.98)	(1.72)
Property	494.91	(3.61)	(0.73)
Trade	921.25	7.39	0.80

Source: relitrade next G

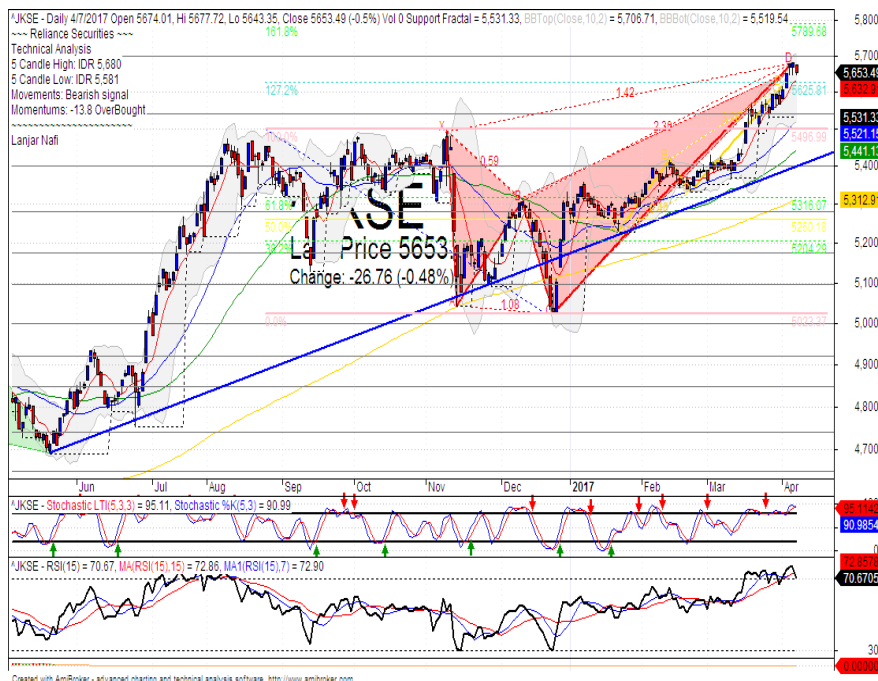
Most Active	Last	Change %	Freq
RBMS	123	25.5	25,904
BUMI	432	4.3	21,372
LMAS	76	(6.2)	12,317
DGIK	127	7.6	8,875
KBLI	645	0.8	8,472

Most Volume	Last	Change %	M share
MYRX	140	0.7	16,216
BUMI	432	4.3	15,348
DEWA	73	(3.9)	6,177
BEKS	54	0.0	4,576
BIPI	123	(0.8)	4,192

Most Value	Last	Change %	Rp Bil
BBCA	17,025	1.6	830.88
BUMI	432	4.3	652.46
TLKM	4,250	0.0	323.00
MYRX	140	0.7	227.10
BBRI	13,000	(0.2)	216.87

Source: relitrade next G

IHSG Technical Review



R3	6030
R2	5860
R1	5700
Last	5653.48
S1	5540
S2	5400
S3	5280

Comment:
Bearish butterfly harmonic pattern formations. Reversal signal. Huge trading volume.

Stochastic, dead-cross at overbought oscillator.

RSI bearish reversal momentum at overbought oscillator.

Long term bullish trend movement.

Stop-loss level if confirmations the harmonic pattern with broke the MA7 at 5588. Downside potential until 5487.

ACES



R3	1090
R2	1030
R1	970
Last	935
S1	915
S2	870
S3	810
SELL	

Comment:

Northern star candlestick pattern. Huge trading volume. Reversal signal.

Stochastic, dead-cross at overbought oscillator.

RSI bearish reversal momentum after reached the overbought oscillator.

Medium term bullish trend movement.

Stop-loss level if break the support level at 910. Downside potential until 855 (38.2% Fibonacci).

INTP



R3	19200
R2	18400
R1	17500
Last	16775
S1	16300
S2	15475
S3	14600
SELL	

Comment:

Bearish harami confirmations after reached the overbought momentum.

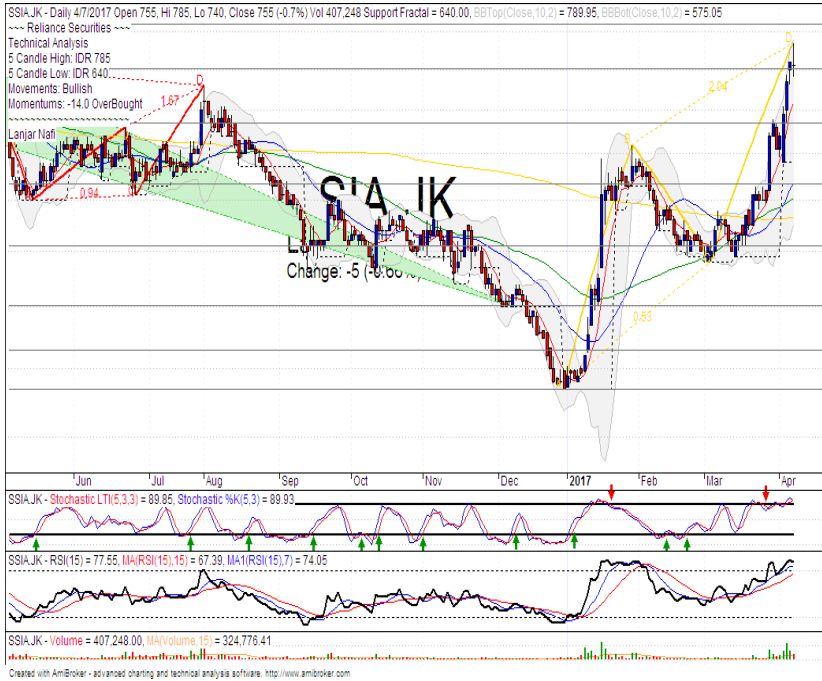
Stochastic dead-cross at overbought oscillator.

RSI bearish reversal momentum.

Medium term bullish trend movement.

Stop-loss level at 16250 if broke the support level. Downside potential until 15320.

SSIA



R3	975
R2	900
R1	810
Last	755
S1	750
S2	685
S3	615
PARTIAL SELL	

Comment:

Bearish harami cross at upper Bollinger bands. Reversal signal.

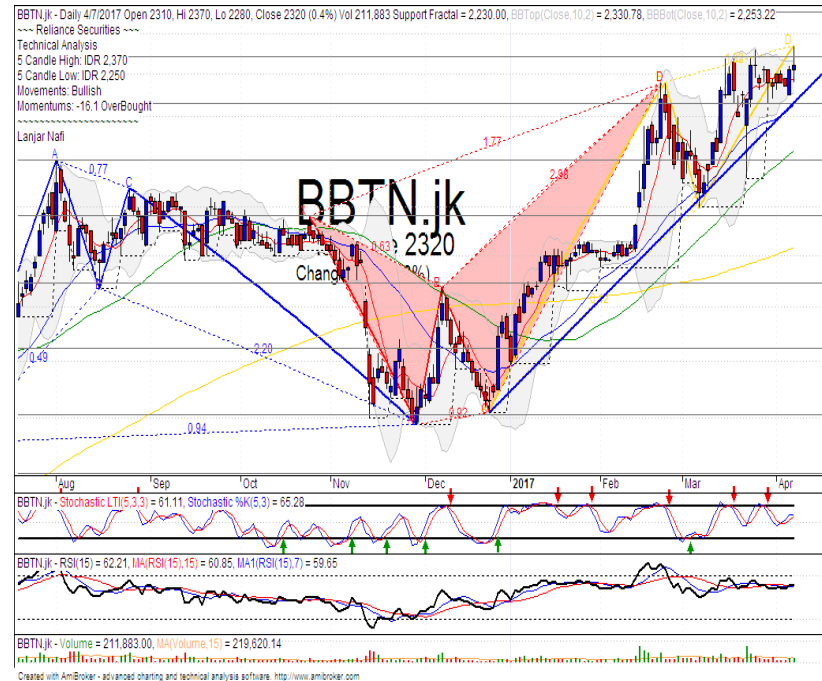
Stochastic dead-cross at overbought oscillator. Broad downside potential.

RSI bearish reversal momentum at overbought oscillator.

Medium term bullish trend movement.

Stop-loss level if broke the support level at 730. Downside potential until MA25 support level at 615.

BBTN



R3	2590
R2	2450
R1	2340
Last	2320
S1	2230
S2	2100
S3	1980
TRADING BUY	

Comment:

Trying to break the resistance level after rebounded at bullish trend support level.

Stochastic consolidations at middle oscillator.

RSI consolidations momentum at middle oscillator.

Medium term bullish trend movement.

Upside target to 2450. Stop-loss level if broke the bullish trend support level at 2250.

Stocks	S2	S1	Closing Price	R1	R2	Technical Notes	Rec	Stop Loss	Rec Buy Prc	Target Price
Plantation										
AALI	14,000	14,900	14,650	15,850	16,700	Consolidations	TB	15,000		15,850
LSIP	1,400	1,475	1,435	1,545	2,670	Consolidations	TB	1,440		1,545
Mining										
INCO	2,120	2,300	2,280	2,500	2,680	Oversold	TB	2,280		2,500
Consumer										
UNVR	42,500	44,000	45,100	46,000	47,800	Consolidations	H	44,000		45,000
INDF	7,250	7,900	7,975	8,500	9,125	Stoch golden-cross	SB	7,800	8,050	8,500
KLBF	1,485	1,540	1,565	1,600	1,650	Overbought	H	1,550		1,650
Trading										
ACES	810	870	935	920	970	Overbought	H	860		920
AKRA	6,100	6,350	6,350	6,600	7,000	Stoch golden-cross	TB	6,400		6,600
UNTR	26,750	28,175	28,700	29,750	31,500	Northern star	PS	29,000		
Property & Construction										
LPCK	4,000	4,160	4,120	4,300	4,460	Oversold	W	4,150		
WIKA	1,990	2,200	2,260	2,400	2,600	Oversold	W	2,300		
BSDE	1,720	1,830	1,815	1,935	2,030	Overbought	PS	1,820		
WSKT	2,120	2,260	2,330	2,410	2,600	Stoch golden-cross	TB	2,250		2,470
ADHI	2,200	2,300	2,230	2,410	2,540	Bearish momentum	PS	2,280		
Basic Industry & Chemical										
SMGR	8,150	8,725	9,175	9,350	9,900	Bullish momentum	SB	8,700	9,100	9,350
CPIN	3,000	3,210	3,200	3,400	3,580	Consolidations	H	3,200		3,480
MAIN	1,180	1,300	1,270	1,400	1,500	Bullish consolidations	SB	1,290		1,400
INTP	15,500	16,350	16,775	17,500	18,400	Overbought	H	16,500		17,500
Miscellaneous										
SRIL	270	288	304	316	350	Arrived at MA50	TB	284		380
ASII	8,250	8,650	8,575	9,000	9,500	Bearish meeting line	PS	8,600		
Finance										
BBTN	2,100	2,200	2,320	2,360	2,480	Consolidations	S	2,180		
BMRI	11,000	11,450	12,200	11,800	12,200	Consolidations	W	11,400		
BTPN	2,340	2,550	2,550	2,770	3,000	Oversold	W	2,540		
BJBR	1,750	1,915	2,250	2,140	2,210	Oversold	TB	2,000		2,140
BBRI	12,350	13,000	13,050	13,500	14,250	Bullish consolidations	H	13,000		13,500
Infrastructure										
TLKM	3,950	4,200	4,130	4,400	4,580	Overbought	H	4,100		4,400
PGAS	2,200	2,360	2,470	2,550	2,800	Stoch dead-cross	PS	2,350		

Source : Reliance Securities

Analyst Conclusions:

The index reached the all time high level. Be care full from distributions phase.

Legend :

- B: BUY (allocate till 100% of the weighted capital to accumulate, higher than 50% upside probability)
- SB: SPECULATIVE BUY (allocate 25%-50% of the weighted capital to accumulate, 25%-50% upside probability)
- W: WAIT (wait for proper entry level, do the stop-loss if necessary)
- H: HOLD (hold the portfolio position, aim for the best price to distribute)
- PS: PARTIAL SELL (distribute 25%-50% part of the portfolio, 25%-50% downside probability)
- S: SELL (distribute till 100% of the portfolio, higher than 50% downside probability)
- TB: TRADING BUY (short term or intraday trading within a tight trading range. Highly speculative).

Ticker	Resistance	Price	Support	Weekly	Weekly	Indicator			Moving Average			
	Fractal	4/7/2017	Fractal	High	Low	Stochastic	RSI	B. Band	25 Days	50 Days	200 Days	
AALI.JK	15,200	14,650	14,575	15,075	14,800	Neutral	Bearish	Neutral	Lower Bands	Under	Under	Under
ACES.JK	840	935	815	940	850	Overbought	Bearish	Overbought	Middle Bands	Upper	Upper	Upper
ADHI.JK	2,420	2,230	2,330	2,390	2,290	Overbought	Bullish	Neutral	Lower Bands	Under	Under	Under
ADRO.JK	1,845	1,890	1,750	1,940	1,835	Neutral	Bearish	Neutral	Middle Bands	Upper	Upper	Upper
AISA.JK	2,250	2,150	2,090	2,250	2,210	Neutral	Bearish	Neutral	Middle Bands	Under	Under	Under
AKRA.JK	6,750	6,350	6,175	6,500	6,300	Neutral	Bearish	Neutral	Middle Bands	Under	Under	Under
ANTM.JK	750	715	710	740	720	Overbought	Bullish	Neutral	Middle Bands	Under	Under	Under
APLN.JK	240	212	210	218	214	Overbought	Bullish	Neutral	Middle Bands	Under	Under	Under
ASII.JK	8,925	8,575	8,325	8,925	8,750	Neutral	Bearish	Neutral	Middle Bands	Upper	Upper	Upper
ASRI.JK	370	348	358	368	352	Overbought	Bearish	Neutral	Middle Bands	Under	Under	Under
BBCA.JK	17,000	17,350	16,550	17,475	16,900	Neutral	Bullish	Overbought	Upper Bands	Upper	Upper	Upper
BBKP.JK	630	640	625	670	630	Neutral	Bearish	Neutral	Upper Bands	Upper	Upper	Upper
BBNI.JK	6,950	6,475	6,350	6,700	6,500	Neutral	Bullish	Neutral	Middle Bands	Under	Upper	Upper
BBRI.JK	13,150	13,050	12,800	13,225	13,075	Neutral	Bearish	Neutral	Middle Bands	Upper	Upper	Upper
BBTN.JK	2,360	2,320	2,230	2,370	2,290	Neutral	Bullish	Neutral	Middle Bands	Upper	Upper	Upper
BDMN.JK	5,000	4,870	4,700	5,000	4,900	Neutral	Bearish	Neutral	Middle Bands	Upper	Upper	Upper
BHIT.JK	131	127	126	130	128	Neutral	Bearish	Neutral	Middle Bands	Under	Under	Under
BJBR.JK	2,240	2,250	1,980	2,470	2,050	Neutral	Bullish	Neutral	Middle Bands	Upper	Under	Upper
BJTM.JK	840	695	615	840	730	Neutral	Bearish	Neutral	Middle Bands	Upper	Upper	Upper
BKSL.JK	100	92	92	98	94	Neutral	Bearish	Neutral	Middle Bands	Under	Under	Under
BMRI.JK	11,450	12,200	11,600	12,425	11,850	Neutral	Bullish	Neutral	Upper Bands	Upper	Upper	Upper
BMTR.JK	535	550	515	565	525	Neutral	Bullish	Neutral	Middle Bands	Upper	Upper	Under
BSDE.JK	1,900	1,815	1,820	1,900	1,825	Neutral	Bearish	Neutral	Lower Bands	Under	Under	Under
BTPN.JK	2,780	2,550	2,570	2,750	2,600	Neutral	Bearish	Neutral	Lower Bands	Under	Under	Under
BWPT.JK	344	346	296	358	346	Neutral	Bearish	Neutral	Middle Bands	Upper	Under	Upper
CMNP.JK	1,490	1,450	1,440	1,460	1,450	Neutral	Bearish	Neutral	Middle Bands	Under	Under	Under
CPIN.JK	3,400	3,200	3,200	3,400	3,240	Neutral	Bearish	Neutral	Middle Bands	Under	Under	Under
CSAP.JK	462	456	446	462	458	Neutral	Bearish	Overbought	Middle Bands	Under	Under	Under
CTRA.JK	1,295	1,095	1,210	1,245	1,125	Overbought	Bearish	Overbought	Lower Bands	Under	Under	Under
DILD.JK	422	414	406	422	414	Neutral	Bearish	Neutral	Lower Bands	Under	Under	Under
EXCL.JK	3,310	2,940	3,150	3,130	3,070	Neutral	Bearish	Neutral	Lower Bands	Under	Under	Upper
GGRM.JK	66,000	68,200	65,025	68,575	67,300	Overbought	Bearish	Neutral	Middle Bands	Upper	Upper	Upper
GIAA.JK	356	370	340	404	354	Neutral	Bearish	Neutral	Middle Bands	Upper	Upper	Under
GJTL.JK	1,185	1,105	1,100	1,160	1,135	Neutral	Bearish	Neutral	Middle Bands	Under	Under	Under
HEXA.JK	3,980	4,100	3,750	4,200	3,890	Overbought	Bearish	Neutral	Middle Bands	Upper	Upper	Upper
HRUM.JK	2,750	2,800	2,400	2,810	2,530	Neutral	Bullish	Overbought	Upper Bands	Upper	Upper	Upper
ICBP.JK	8,950	8,175	8,150	8,450	8,225	Neutral	Bearish	Neutral	Middle Bands	Under	Under	Under
IMAS.JK	1,300	1,185	1,150	1,250	1,180	Neutral	Bullish	Neutral	Middle Bands	Under	Under	Under
INCO.JK	2,410	2,280	2,270	2,420	2,310	Neutral	Bullish	Neutral	Middle Bands	Under	Under	Under
INDF.JK	8,300	7,975	7,925	8,100	8,000	Neutral	Bearish	Neutral	Middle Bands	Under	Under	Under
INDY.JK	805	735	680	805	750	Neutral	Bearish	Neutral	Middle Bands	Upper	Upper	Upper
INTA.JK	406	456	378	460	384	Overbought	Bullish	Overbought	Upper Bands	Upper	Upper	Upper
INTP.JK	17,200	16,775	15,300	17,200	16,800	Overbought	Bearish	Neutral	Middle Bands	Upper	Upper	Upper
ITMG.JK	22,300	20,450	16,150	22,300	20,650	Neutral	Bearish	Neutral	Middle Bands	Upper	Upper	Upper
JFJA.JK	1,725	1,620	1,520	1,725	1,555	Neutral	Bearish	Neutral	Middle Bands	Upper	Under	Upper
JSMR.JK	4,650	4,720	4,570	4,740	4,640	Overbought	Bearish	Neutral	Middle Bands	Upper	Upper	Upper
KUJA.JK	322	330	324	332	330	Overbought	Bearish	Overbought	Middle Bands	Upper	Upper	Upper
KLBF.JK	1,525	1,565	1,485	1,620	1,560	Overbought	Bearish	Neutral	Middle Bands	Upper	Upper	Under
KRAS.JK	690	605	595	640	615	Neutral	Bullish	Neutral	Middle Bands	Under	Under	Under
LPCK.JK	4,430	4,120	4,190	4,330	4,200	Overbought	Bearish	Overbought	Lower Bands	Under	Under	Under
LPKR.JK	740	725	720	740	730	Neutral	Bearish	Neutral	Middle Bands	Under	Under	Under
LPPF.JK	13,600	13,250	13,125	13,600	13,275	Neutral	Bearish	Neutral	Middle Bands	Under	Under	Under
LSIP.JK	1,505	1,435	1,410	1,495	1,460	Neutral	Bearish	Neutral	Middle Bands	Under	Under	Under
MAIN.JK	1,275	1,270	1,210	1,410	1,290	Neutral	Bearish	Neutral	Middle Bands	Upper	Upper	Under
MAPI.JK	6,025	6,350	5,675	6,750	6,150	Neutral	Bearish	Neutral	Middle Bands	Upper	Upper	Upper
MASA.JK	270	252	244	270	254	Neutral	Bearish	Neutral	Middle Bands	Upper	Upper	Upper
MNCN.JK	1,850	1,880	1,730	1,885	1,835	Overbought	Bullish	Overbought	Middle Bands	Upper	Upper	Under
MPPA.JK	1,180	1,030	1,115	1,125	1,060	Overbought	Bearish	Overbought	Lower Bands	Under	Under	Under
MTLA.JK	330	324	320	322	322	Neutral	Bearish	Neutral	Upper Bands	Upper	Upper	Upper
MYOR.JK	2,160	2,080	2,050	2,100	2,090	Neutral	Bullish	Neutral	Middle Bands	Under	Upper	Upper
PGAS.JK	2,580	2,470	2,410	2,560	2,460	Neutral	Bearish	Neutral	Middle Bands	Under	Under	Under
PTBA.JK	14,200	13,100	11,575	14,200	13,225	Neutral	Bearish	Neutral	Middle Bands	Upper	Upper	Upper
RALS.JK	1,185	1,150	1,115	1,185	1,130	Neutral	Bullish	Neutral	Middle Bands	Under	Under	Under
ROTI.JK	1,560	1,640	1,445	1,650	1,545	Overbought	Bullish	Neutral	Upper Bands	Upper	Upper	Upper
SCMA.JK	2,930	2,870	2,610	2,930	2,850	Overbought	Bearish	Neutral	Middle Bands	Upper	Upper	Upper
SGRO.JK	2,040	2,050	1,900	2,070	2,050	Neutral	Bearish	Neutral	Middle Bands	Upper	Upper	Upper
SIMP.JK	640	635	615	690	630	Neutral	Bearish	Neutral	Middle Bands	Upper	Upper	Upper
SMCB.JK	940	905	900	915	905	Neutral	Bearish	Neutral	Middle Bands	Under	Under	Under
SMGR.JK	9,675	9,175	8,750	9,200	8,918	Neutral	Bearish	Neutral	Middle Bands	Upper	Under	Under
SMRA.JK	1,380	1,315	1,275	1,380	1,330	Neutral	Bearish	Neutral	Middle Bands	Under	Under	Under
SRIL.JK	392	304	278	354	316	Overbought	Bearish	Neutral	Middle Bands	Under	Under	Upper
SSIA.JK	690	755	640	785	675	Overbought	Bearish	Overbought	Middle Bands	Upper	Upper	Upper
SSMS.JK	1,510	1,695	1,450	1,735	1,695	Neutral	Bearish	Overbought	Middle Bands	Upper	Upper	Upper
TLKM.JK	4,320	4,130	4,010	4,320	4,140	Neutral	Bearish	Neutral	Middle Bands	Upper	Upper	Upper
TOTL.JK	815	775	790	820	800	Neutral	Bearish	Neutral	Lower Bands	Under	Under	Under
UNTR.JK	29,450	28,700	26,500	29,450	28,375	Overbought	Bearish	Neutral	Middle Bands	Upper	Upper	Upper
UNVR.JK	44,000	45,100	42,750	45,400	43,975	Overbought	Bearish	Overbought	Middle Bands	Upper	Upper	Upper

Source : Reliance Research

Legend :

- Movement: Bullish and Bearish (Indicator Stochastic)
- Momentum: Oversold, Overbought and Neutral (Indicator RSI)
- Resistance Fractal: Strong Resistance
- Support Fractal: Strong Support
- Green: Good Conditions
- Red: Poor Conditions

HEAD OFFICE

Reliance Building

Jl. Pluit Sakti Raya No. 27AB,
Pluit
Jakarta 14450
T. +62 21 661 7768
F. +62 21 661 9884

RESEARCH DIVISION

Robertus Yanuar Hardy

robertus@reliance-securities.com

Rio Adrianus

rio.adrianus@reliance-securities.com

Lanjar Nafi Taulat I

lanjar@reliance-securities.com

Aji Setiawan

aji@reliance-securities.com

Shanti Dwi Jayanti

santi@reliance-securities.com

Senior Analyst

Research Analyst

Technical Research Analyst

Associate Research Analyst

Associate Research Analyst

EQUITY DIVISION

Jakarta- Pluit

Jl. Pluit Sakti Raya No. 27AB,
Pluit
Jakarta 14450
T. +62 21 661 7768
F. +62 21 661 9884

Bandung

Jl.Cisangkuy No.58
Bandung 40115
T. +62 22 721 8200
F. +62 22 721 9255

Surabaya - Gubeng

Jl. Bangka No. 22
Surabaya 60281
T. +62 31 501 1128
F. +62 31 503 3196

Makassar

Jl. Boto Lempangan No. 34 J
Makassar- Sulawesi Selatan
T. +62 411 3632388
F. +62 411 3614634

Jakarta - Sudirman

Menara Batavia Ground Floor
Jl.KH.Mas Mansyur Kav 126
Jakarta 10220
T. +62 21 57905455
F. +62 21 57950728

Tasikmalaya

Ruko Tasik Indah Plaza No.21
Jl. KHZ Mustofa No. 345
Tasikmalaya 46121
T. +62 265 345000
F. +62 265 345003

Surabaya - Diponegoro

Jl. Diponegoro No.26D
Surabaya 60261
T. +62 31 567 0388
F. +62 31 561 0528

Medan

Jl. Teuku Amir Hamzah No.40-O
Medan 20117
T. +62 61 6638592
F. +62 61 6638023

Jakarta - Kebon Jeruk

Plaza Kebon Jeruk
Jl.Raya Perjuangan Blok A/2
Jakarta 11530
T. +62 21 532 4074
F. +62 21 536 2157

Malang

Jl. Guntur No. 19
Malang 65112
T. +62 341 347 611
F. +62 341 347 615

Bali - Denpasar

Dewata Square Blok A3
Jl. Letda Tantular Renon
Denpasar 802361
T. +62 361 225099
F. +62 361 245099

Tangerang

Jl. Pahlawan Seribu Ruko BSD
Sektor 7 Blok RK kav. 9
Tangerang 15310
T. +62 21 5387495
F. +62 21 5387494

Pekanbaru

Jl. Jendral Sudirman No.73
Pekanbaru-Riau
T. +62 761 848414
F. +62 761 849456

Pontianak

Jl. MT Haryono No. 6
Pontianak 78121
T. +62 561 575674
F. +62 561 575670

Jakarta - Centro

Ruko Centro Residence Kav. 4-5
Tower C Lt. 1 No. 26-29
Jl. Macan, Daan Mogot
Jakarta 14450
T. +62 21 56945227
F. +62 21 56945226

Solo

Jl. Slamet Riyadi 330^a
Solo 57145
T. +62 271 736599
F. +62 271 733478

Balikpapan

Ruko Bukit Damai Indah
Blok I, No. 3, Rt.34
Jl. MT. Haryono, Gunung
Bahagia, Balikpapan Selatan
76114
T. +62 542 746313
F. +62 542 746317

IDX CORNER & INVESTMENT GALLERY

President University

Resto Plaza 1F - Jababeka
Education Park
Jl. Ki Hajar Dewantara Raya
Cikarang - Bekasi 17550
T. +62 21 89106030

Universitas Siliwangi Tasikmalaya

Jl. Siliwangi No. 24
Tasikmalaya 46151
T. +62 265 323685
F. +62 265 323534

Politeknik Kediri

Jl. Mayor Bismo No. 27
Kediri 64121
T. +62 354 683128
F. +62 354 683128

Universitas Muhammadiyah Sidoarjo

Jl. Majapahit 666 B
Sidoarjo, Jawa Timur
T. +62 31 8945444
F. +62 31 8949333

Universitas Tanjungpura Pontianak

Jl. Jendral Ahmad Yani
Pontianak 78124
T. +62 561 743465
F. +62 561 766840

Universitas Pesantren Tinggi Darul Ulum

Kompleks Pp Darul Ulu,
Peterongan
Jombang, Jawa Timur 60281
T. +62 321 873655
F. +62 321 875771

STIE "AUB" Surakarta

Jl. Mr. Sartono 97, Cengklik
Nusukan, Surakarta 57135
T. +62 271 854803
F. +62 271 853084

Universitas Surabaya

Jl. Raya Kalirungkut
Surabaya 60293
T. +62 31 298 1203
F. +62 31 298 1204

Universitas Muhammadiyah Gresik

Jl. Sumatra 101 GKB
Gresik 61121
T. +62 31 395 1414
F. +62 31 395 2585

Universitas Negeri Malang

Jl. Surabaya No. 6
Malang 65145
T. +62 341 585914
F. +62 341 55288

Universitas Muhammadiyah Malang

Jl. Raya Tlogomas 246
Malang 65144
T. +62 341 464318-9
F. +62 341 460782

FSEI IAIN Antasari

Jl. Ahmad Yani Km. 4,5
Banjarmasin
T. + 62 511 3265783

STIE Malangkececwara

Jl. Terusan Candi Kalasan
Malang 65142
T. +62 341 491813
F. +62 341 495619

STIESIA Surabaya

Jl. Menur Pumpungan 30
Surabaya
T. +62 31 5947505
F. +62 31 5932218

Universitas 17 Agustus 1945 Banyuwangi

Jl. Adi Sucipto 26
Banyuwangi, Jawa Timur
T. +62 333 419613
F. +62 333 419163

STIE Tri Bhakti

Jl. Teuku Umar No. 24
Cut Meutia Setiakawan,
Bekasi
T. +62 21 82429400,
82429500
F. +62 271 726156

Universitas Islam Kalimantan

Jl. Adiyaksa No. 2, Kayu
Tangi, Banjarmasin
T. + 62 511 3303871
F. + 62 511 3303871

STIKOM Bali

Jalan Puputan No. 86, Renon,
Denpasar
T. +62361 244445
F. +62361 264773

Universitas Muhammadiyah Pontianak

Fakultas Ekonomi UM
Pontianak
Jl. Ahmad Yani, No. 111,
Pontianak 78124
T. +62561 743465
F. +62561 766840

Universitas Negeri Makassar

Fakultas Ekonomi Gedung BT
Lt.2
Jl. A.P. Pettarani, Kampus
UNM, Gunungsari Baru
Makassar 90222
T. +62 411 889464 / 881244
F. +62 411 887604

STIE AAS Surakarta

Jl. Slamet Riyadi No. 361,
Kartasura, Surakarta
T. +62 271 726156
F. +62 271 726156

UPN "Veteran" Yogyakarta

Jl. Babarsari 2, Tambak Bayan
Yogyakarta
T. +62 274 485268
F. +62 274 487147

Disclaimer:

Information, opinions and recommendations contained in this document are presented by PT Reliance Securities Tbk. from sources that are considered reliable and dependable. This document is not an offer, invitation or any kind of representations to decide to buy or sell stock. Investment decisions taken based on this document is not the responsibility of PT Reliance Securities Tbk. PT Reliance Securities Tbk. reserves the right to change the contents of this document at any time without prior notice.