

## IHSG



5627.93  
-16.366  
-0.29%

Vol (Mn): 9831.915  
Val (Bn): 7326.074

## LQ45



929.417  
-5.066  
-0.54%

Sector Indices	Last	Change	Change %
Agriculture	1843.59	(7.09)	(0.38)
Basic Industry	610.04	(3.31)	(0.54)
Consumer	2428.20	(22.28)	(0.92)
Finance	882.67	(7.58)	(0.86)
Infrastructure	1103.99	7.99	0.72
Manufacture	1458.55	(10.27)	(0.70)
Mining	1559.28	3.05	0.20
Misc Industry	1460.01	(2.83)	(0.19)
Property	492.06	3.00	0.61
Trade	925.50	4.78	0.52

Source: relitrade next G

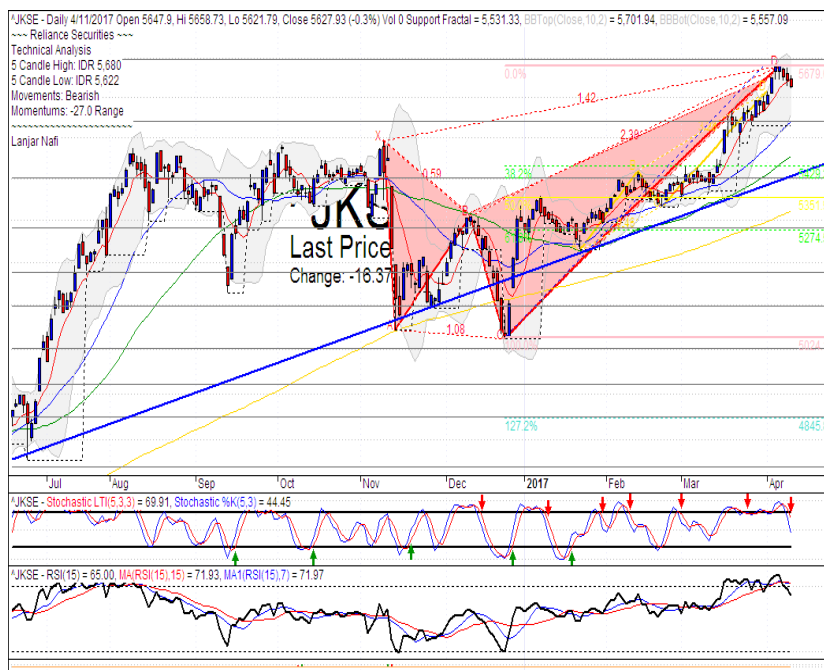
Most Active	Last	Change %	Freq
RIMO	175	4.2	18,721
KBLI	760	1.3	15,469
BNLI	680	3.0	10,888
TRAM	115	5.5	10,633
BULL	165	26.0	9,746

Most Volume	Last	Change %	M share
MYRX	138	4.5	23,767
BRMS	85	14.9	14,982
RIMO	175	4.2	6,712
DEWA	69	1.5	4,991
BULL	165	26.0	4,279

Most Value	Last	Change %	Rp Bil
MYRX	138	4.5	321.25
BBCA	17,450	0.6	309.08
ASII	8,575	(0.3)	239.58
TLKM	4,150	1.2	226.40
UNTR	29,000	1.4	208.67

Source: relitrade next G

## IHSG Technical Review



R3	6030
R2	5860
R1	5700
Last	5627.93
S1	5540
S2	5400
S3	5280

**Comment:**  
Bearish butterfly harmonic pattern formations. Reversal signal. Huge trading volume.

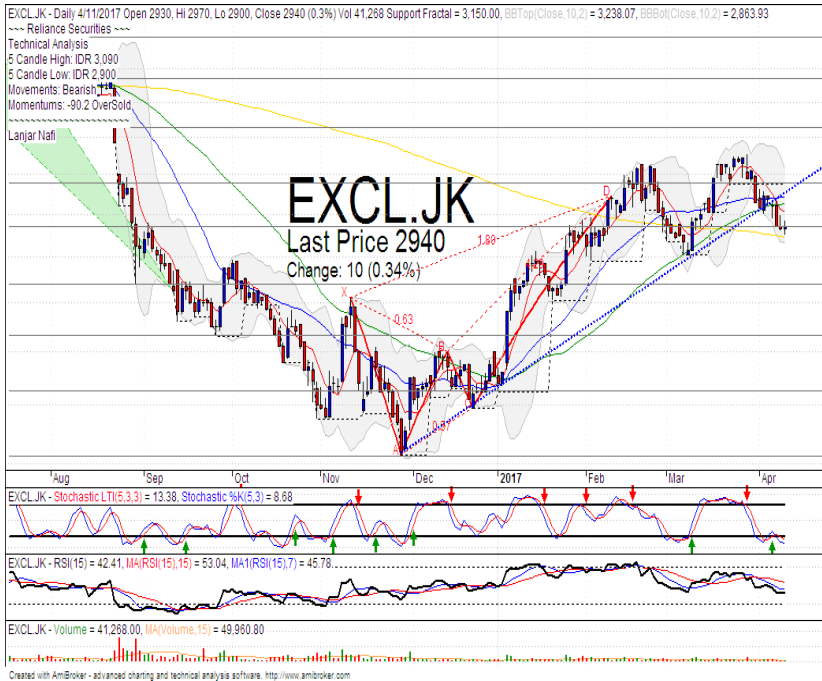
Stochastic, dead-cross at overbought oscillator.

RSI bearish reversal momentum at overbought oscillator.

Long term bullish trend movement.

Stop-loss level if confirmations the harmonic pattern with broke the MA7 at 5588. Downside potential until 5487.

## EXCL



R3	3450
R2	3160
R1	2940
Last	2940
S1	2670
S2	2480
S3	2250

**TRADING BUY**

### Comment:

2 star in the south candlestick pattern. Reversal signal after rebounded at MA200 confirmations.

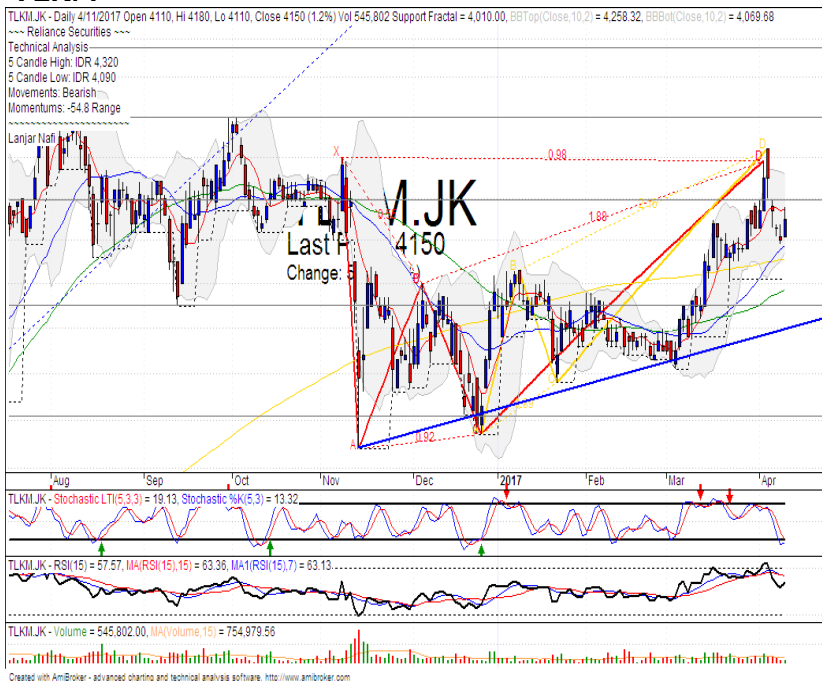
Stochastic, golden-cross at oversold oscillator.

RSI bullish reversal momentum at oversold area.

Short term bearish trend movement.

Upside target to upper Bollinger bands at 3230. Stop-loss level if break the MA200 at 2800.

## TLKM



R3	4570
R2	4400
R1	4200
Last	4150
S1	3950
S2	3710
S3	3510

**TRADING BUY**

### Comment:

Rebounded at MA25 support level and bullish separating line candlestick pattern.

Stochastic golden-cross at oversold oscillator.

RSI bullish reversal momentum at middle oscillator.

Medium term bullish trend movement.

Upside target to upper Bollinger bands resistance level at 4260. Stop-loss level at 4060 if broke the MA25 support level.

## ADHI



R3	2420
R2	2300
R1	2190
Last	2160
S1	2070
S2	1960
S3	1850

**TRADING BUY**

### Comment:

Bullish harami cross candlestick pattern. Reversal signal.

Stochastic golden-cross at oversold oscillator. broad upside potential.

RSI bullish reversal momentum potential at oversold.

Long and medium term bearish trend movement.

Upside target until uptrend channeling resistance level at 2530. Stop-loss level if broke the lower bands support level at 2100.

## INKP



R3	2310
R2	2100
R1	1850
Last	1725
S1	1650
S2	1485
S3	1355

**SELL**

### Comment:

Bearish engulfing candlestick pattern after reached the high resistance level. Distributions phase indications.

Stochastic dead-cross at overbought oscillator. Broad downside potential.

RSI reversal momentum at overbought oscillator.

Medium term bullish trend movement.

Stop-loss level if confirmations the negative signal and broke the support level at 1625. Downside potential until 1480.

Stocks	S2	S1	Closing Price	R1	R2	Technical Notes	Rec	Stop Loss	Rec Buy Prc	Target Price
<b>Plantation</b>										
AALI	13,000	14,000	14,500	14,900	15,850	Consolidations	W	14,000		
LSIP	1,250	1,300	1,380	1,400	1,545	Oversold	W	1,350		
<b>Mining</b>										
INCO	1,965	2,120	2,270	2,300	2,500	Oversold	TB	2,200		2,500
<b>Consumer</b>										
UNVR	42,500	44,000	44,900	46,000	47,800	Bearish engulfing	S	44,500		
INDF	7,250	7,900	7,975	8,500	9,125	Stoch golden-cross	SB	7,800	7,950	8,500
KLBF	1,485	1,540	1,550	1,600	1,650	Bearish momentum	S	1,520		
<b>Trading</b>										
ACES	810	870	905	920	970	Bearish momentum	S	900		
AKRA	6,100	6,350	6,375	6,600	7,000	Consolidations	TB	6,300		6,600
UNTR	26,750	28,175	29,000	29,750	31,500	Consolidations	H	28,400		
<b>Property &amp; Construction</b>										
LPCK	3,850	4,000	4,070	4,160	4,300	Oversold	W	4,040		
WIKA	1,850	1,990	2,190	2,200	2,400	Oversold	W	2,100		
BSDE	1,630	1,720	1,775	1,830	1,935	Bearish momentum	PS	1,720		
WSKT	1,980	2,120	2,250	2,260	2,410	Break out support	W	2,100		
ADHI	1,955	2,120	2,160	2,200	2,300	Bullish harami cross	PS	2,280		
<b>Basic Industry &amp; Chemical</b>										
SMGR	8,150	8,725	8,800	9,350	9,900	Consolidations	W	8,700		
CPIN	3,000	3,210	3,200	3,400	3,580	Consolidations	H	3,200		3,480
MAIN	1,080	1,180	1,260	1,300	1,400	Consolidations	W	1,200		
INTP	15,500	16,350	16,500	17,500	18,400	Bearish momentum	S	16,350		
<b>Miscellaneous</b>										
SRIL	270	288	300	316	350	Stoch golden-cross	TB	284		336
ASII	7,900	8,250	8,575	8,650	9,000	Touching the MA25	PS	8,200		
<b>Finance</b>										
BBTN	2,100	2,200	2,320	2,360	2,480	Consolidations	S	2,180		
BMRI	11,100	11,450	11,750	11,800	12,200	Bearish momentum	S	11,450		
BTPN	2,340	2,550	2,590	2,770	3,000	Bullish kicker signal	SB	2,540	2,580	2,770
BJBR	1,750	1,915	2,030	2,140	2,210	Consolidations	W	2,000		
BBRI	12,350	13,000	12,900	13,500	14,250	Stoch dead-cross	S	13,000		
<b>Infrastructure</b>										
TLKM	3,710	3,950	4,150	4,200	4,400	Rebounded at MA25	TB	4,100		4,300
PGAS	2,200	2,360	2,430	2,550	2,800	Consolidations	W	2,350		

Source : Reliance Securities

### Analyst Conclusions:

The index reached the all time high level. Be care full from distributions phase.

Legend :

- B: BUY (allocate till 100% of the weighted capital to accumulate, higher than 50% upside probability)
- SB: SPECULATIVE BUY (allocate 25%-50% of the weighted capital to accumulate, 25%-50% upside probability)
- W: WAIT (wait for proper entry level, do the stop-loss if necessary)
- H: HOLD (hold the portfolio position, aim for the best price to distribute)
- PS: PARTIAL SELL (distribute 25%-50% part of the portfolio, 25%-50% downside probability)
- S: SELL (distribute till 100% of the portfolio, higher than 50% downside probability)
- TB: TRADING BUY (short term or intraday trading within a tight trading range. Highly speculative).

Ticker	Resistance Fractal	Price 4/11/2017	Support Fractal	Weekly High	Weekly Low	Indicator			Moving Average			
						Stochastic	RSI	B. Band	25 Days	50 Days	200 Days	
AALI.JK	15,200	14,500	14,575	15,025	14,725	Oversold	Bearish	Neutral	Lower Bands	Under	Under	Under
ACES.JK	840	905	815	950	930	Overbought	Bearish	Neutral	Middle Bands	Upper	Upper	Upper
ADHI.JK	2,420	2,160	2,330	2,340	2,210	Oversold	Bearish	Neutral	Middle Bands	Under	Under	Under
ADRO.JK	1,845	1,870	2,150	1,940	1,890	Neutral	Bearish	Neutral	Middle Bands	Upper	Upper	Upper
AISA.JK	2,250	2,290	2,150	2,300	2,220	Neutral	Bullish	Neutral	Upper Bands	Upper	Upper	Upper
AKRA.JK	6,750	6,375	6,125	6,500	6,300	Neutral	Bullish	Neutral	Middle Bands	Upper	Under	Under
ANTM.JK	750	700	710	730	715	Oversold	Bearish	Neutral	Middle Bands	Under	Under	Under
APLN.JK	240	212	210	216	214	Neutral	Bullish	Neutral	Middle Bands	Under	Under	Under
ASII.JK	8,925	8,575	8,325	8,900	8,600	Neutral	Bearish	Neutral	Middle Bands	Upper	Upper	Upper
ASRI.JK	370	346	346	364	352	Oversold	Bearish	Neutral	Middle Bands	Under	Under	Under
BBCA.JK	17,000	17,450	16,550	17,750	17,275	Neutral	Bearish	Overbought	Middle Bands	Upper	Upper	Upper
BBKP.JK	630	645	625	670	630	Neutral	Bullish	Neutral	Middle Bands	Upper	Upper	Upper
BBNI.JK	6,700	6,375	6,350	6,700	6,450	Neutral	Bearish	Neutral	Middle Bands	Under	Upper	Upper
BBRI.JK	13,150	12,900	12,800	13,250	13,075	Neutral	Bearish	Neutral	Middle Bands	Upper	Upper	Upper
BBTN.JK	2,360	2,320	2,250	2,390	2,290	Neutral	Bearish	Neutral	Middle Bands	Upper	Upper	Upper
BDMN.JK	5,000	4,650	4,700	5,000	4,830	Neutral	Bearish	Neutral	Lower Bands	Under	Under	Upper
BHIT.JK	131	125	126	130	129	Neutral	Bearish	Neutral	Lower Bands	Under	Under	Under
BJBR.JK	2,470	2,030	1,960	2,470	2,050	Neutral	Bearish	Neutral	Middle Bands	Under	Under	Upper
BJTM.JK	840	685	615	760	715	Oversold	Bearish	Neutral	Middle Bands	Upper	Upper	Upper
BKSL.JK	100	90	92	95	92	Oversold	Bearish	Neutral	Lower Bands	Under	Under	Under
BMRI.JK	11,450	11,750	11,600	12,425	11,900	Neutral	Bearish	Neutral	Middle Bands	Upper	Upper	Upper
BMTR.JK	535	545	515	565	550	Neutral	Bearish	Neutral	Middle Bands	Upper	Under	Under
BSDE.JK	1,900	1,775	1,820	1,885	1,825	Oversold	Bearish	Neutral	Lower Bands	Under	Under	Under
BTPN.JK	2,780	2,590	2,570	2,640	2,580	Oversold	Bullish	Neutral	Middle Bands	Under	Under	Under
BWPT.JK	344	350	332	366	346	Neutral	Bearish	Neutral	Middle Bands	Upper	Under	Upper
CMNP.JK	1,490	1,450	1,440	1,450	1,450	Neutral	Bullish	Neutral	Middle Bands	Under	Under	Under
CPIN.JK	3,400	3,200	3,200	3,400	3,240	Neutral	Bearish	Neutral	Middle Bands	Under	Under	Under
CSAP.JK	462	462	454	464	458	Neutral	Bullish	Neutral	Middle Bands	Under	Under	Under
CTRA.JK	1,295	1,155	1,080	1,220	1,125	Oversold	Bullish	Neutral	Middle Bands	Under	Under	Under
DILD.JK	422	416	398	418	414	Neutral	Bullish	Neutral	Middle Bands	Under	Under	Under
EXCL.JK	3,310	2,940	3,150	3,090	2,970	Oversold	Bearish	Neutral	Middle Bands	Under	Under	Upper
GGRM.JK	68,575	65,450	65,025	68,575	66,750	Neutral	Bearish	Neutral	Middle Bands	Upper	Upper	Upper
GIAA.JK	404	360	340	404	366	Neutral	Bearish	Neutral	Middle Bands	Upper	Upper	Under
GJTL.JK	1,185	1,075	1,100	1,155	1,100	Oversold	Bearish	Neutral	Lower Bands	Under	Under	Under
HEXA.JK	3,980	4,340	3,750	4,380	4,120	Overbought	Bullish	Overbought	Upper Bands	Upper	Upper	Upper
HRUM.JK	2,750	2,720	2,400	2,880	2,690	Overbought	Bearish	Neutral	Middle Bands	Upper	Upper	Upper
ICBP.JK	8,950	8,125	8,150	8,400	8,225	Oversold	Bearish	Neutral	Middle Bands	Under	Under	Under
IMAS.JK	1,250	1,155	1,150	1,250	1,155	Neutral	Bearish	Neutral	Middle Bands	Under	Under	Under
INCO.JK	2,370	2,270	2,270	2,370	2,290	Oversold	Bearish	Neutral	Middle Bands	Under	Under	Under
INDF.JK	8,300	7,975	7,925	8,100	8,000	Neutral	Bearish	Neutral	Middle Bands	Under	Under	Under
INDY.JK	805	710	725	795	745	Oversold	Bearish	Neutral	Middle Bands	Under	Under	Upper
INTA.JK	406	470	378	478	446	Overbought	Bullish	Overbought	Middle Bands	Upper	Upper	Upper
INTP.JK	17,200	16,500	15,300	17,200	16,975	Neutral	Bearish	Neutral	Middle Bands	Upper	Upper	Upper
ITMG.JK	22,300	19,950	16,150	22,250	20,150	Neutral	Bearish	Neutral	Middle Bands	Upper	Upper	Upper
JFJA.JK	1,725	1,630	1,590	1,725	1,650	Neutral	Bearish	Neutral	Middle Bands	Upper	Under	Upper
JSMR.JK	4,650	4,640	4,620	4,740	4,670	Neutral	Bearish	Neutral	Middle Bands	Upper	Upper	Under
KJAJ.JK	322	328	324	332	330	Neutral	Bearish	Neutral	Middle Bands	Upper	Upper	Upper
KLBF.JK	1,620	1,550	1,485	1,620	1,570	Neutral	Bearish	Neutral	Middle Bands	Upper	Upper	Under
KRAS.JK	690	585	595	630	595	Oversold	Bearish	Overbought	Middle Bands	Under	Under	Under
LPCK.JK	4,430	4,070	4,190	4,300	4,130	Oversold	Bearish	Overbought	Middle Bands	Under	Under	Under
LPKR.JK	740	730	720	740	730	Neutral	Bearish	Neutral	Middle Bands	Under	Under	Under
LPPF.JK	13,550	13,300	13,125	13,550	13,275	Neutral	Bearish	Neutral	Middle Bands	Under	Under	Under
LSIP.JK	1,505	1,380	1,410	1,490	1,415	Oversold	Bearish	Neutral	Lower Bands	Under	Under	Under
MAIN.JK	1,410	1,260	1,210	1,410	1,295	Neutral	Bearish	Neutral	Middle Bands	Upper	Upper	Under
MAPI.JK	6,750	6,400	5,675	6,750	6,150	Neutral	Bearish	Neutral	Middle Bands	Upper	Upper	Upper
MASA.JK	270	246	244	260	252	Neutral	Bearish	Neutral	Middle Bands	Upper	Upper	Upper
MNCN.JK	1,850	1,900	1,730	1,910	1,870	Overbought	Bearish	Overbought	Middle Bands	Upper	Upper	Upper
MPPA.JK	1,180	965	1,115	1,110	1,010	Oversold	Bearish	Overbought	Lower Bands	Under	Under	Under
MTLA.JK	340	322	320	340	322	Oversold	Bearish	Neutral	Middle Bands	Under	Upper	Upper
MYOR.JK	2,160	2,080	2,060	2,100	2,090	Neutral	Bullish	Neutral	Middle Bands	Under	Upper	Upper
PGAS.JK	2,580	2,430	2,410	2,510	2,460	Neutral	Bullish	Neutral	Middle Bands	Under	Under	Under
PTBA.JK	14,200	12,975	12,725	14,075	13,200	Neutral	Bearish	Neutral	Middle Bands	Upper	Upper	Upper
RALS.JK	1,185	1,165	1,145	1,185	1,160	Neutral	Bearish	Neutral	Middle Bands	Upper	Under	Under
ROTI.JK	1,560	1,600	1,445	1,655	1,565	Overbought	Bearish	Neutral	Middle Bands	Upper	Upper	Upper
SCMA.JK	2,930	2,900	2,610	2,930	2,890	Neutral	Bearish	Neutral	Middle Bands	Upper	Upper	Upper
SGRO.JK	2,070	2,030	1,900	2,070	2,050	Neutral	Bearish	Neutral	Middle Bands	Upper	Upper	Upper
SIMP.JK	690	635	615	690	640	Neutral	Bearish	Neutral	Middle Bands	Upper	Upper	Upper
SMCB.JK	940	900	900	915	905	Neutral	Bearish	Neutral	Middle Bands	Under	Under	Under
SMGR.JK	9,675	8,800	8,822	9,200	8,918	Neutral	Bearish	Neutral	Middle Bands	Under	Under	Under
SMRA.JK	1,380	1,350	1,295	1,380	1,330	Neutral	Bearish	Neutral	Middle Bands	Under	Under	Under
SRIL.JK	392	300	298	322	308	Oversold	Bullish	Neutral	Middle Bands	Under	Under	Upper
SSIA.JK	690	795	640	800	745	Overbought	Bearish	Overbought	Middle Bands	Upper	Upper	Upper
SSMS.JK	1,510	1,680	1,450	1,735	1,695	Neutral	Bearish	Neutral	Middle Bands	Upper	Upper	Upper
TLKM.JK	4,320	4,150	4,010	4,320	4,140	Oversold	Bearish	Neutral	Middle Bands	Upper	Upper	Upper
TOTL.JK	815	780	770	820	795	Neutral	Bearish	Neutral	Lower Bands	Under	Under	Under
UNTR.JK	29,450	29,000	26,500	29,200	28,775	Neutral	Bearish	Neutral	Middle Bands	Upper	Upper	Upper
UNVR.JK	44,000	44,900	42,750	45,500	45,000	Overbought	Bearish	Neutral	Middle Bands	Upper	Upper	Upper

Source : Reliance Research

### Legend :

- Movement: Bullish and Bearish (Indicator Stochastic)
- Momentum: Oversold, Overbought and Neutral (Indicator RSI)
- Resistance Fractal: Strong Resistance
- Support Fractal: Strong Support
- Green: Good Conditions
- Red: Poor Conditions



## HEAD OFFICE

### Reliance Building

Jl. Pluit Sakti Raya No. 27AB,  
Pluit  
Jakarta 14450  
T. +62 21 661 7768  
F. +62 21 661 9884

## RESEARCH DIVISION

### Robertus Yanuar Hardy

*robertus@reliance-securities.com*

### Rio Adrianus

*rio.adrianus@reliance-securities.com*

### Lanjar Nafi Taulat I

*lanjar@reliance-securities.com*

### Aji Setiawan

*aji@reliance-securities.com*

### Shanti Dwi Jayanti

*santi@reliance-securities.com*

Senior Analyst

Research Analyst

Technical Research Analyst

Associate Research Analyst

Associate Research Analyst

## EQUITY DIVISION

### Jakarta- Pluit

Jl. Pluit Sakti Raya No. 27AB,  
Pluit  
Jakarta 14450  
T. +62 21 661 7768  
F. +62 21 661 9884

### Bandung

Jl.Cisangkuy No.58  
Bandung 40115  
T. +62 22 721 8200  
F. +62 22 721 9255

### Surabaya - Gubeng

Jl. Bangka No. 22  
Surabaya 60281  
T. +62 31 501 1128  
F. +62 31 503 3196

### Makassar

Jl. Boto Lempangan No. 34 J  
Makassar- Sulawesi Selatan  
T. +62 411 3632388  
F. +62 411 3614634

### Jakarta - Sudirman

Menara Batavia Ground Floor  
Jl.KH.Mas Mansyur Kav 126  
Jakarta 10220  
T. +62 21 57905455  
F. +62 21 57950728

### Tasikmalaya

Ruko Tasik Indah Plaza No.21  
Jl. KHZ Mustofa No. 345  
Tasikmalaya 46121  
T. +62 265 345000  
F. +62 265 345003

### Surabaya - Diponegoro

Jl. Diponegoro No.26D  
Surabaya 60261  
T. +62 31 567 0388  
F. +62 31 561 0528

### Medan

Jl. Teuku Amir Hamzah No.40-O  
Medan 20117  
T. +62 61 6638592  
F. +62 61 6638023

### Jakarta - Kebon Jeruk

Plaza Kebon Jeruk  
Jl.Raya Perjuangan Blok A/2  
Jakarta 11530  
T. +62 21 532 4074  
F. +62 21 536 2157

### Malang

Jl. Guntur No. 19  
Malang 65112  
T. +62 341 347 611  
F. +62 341 347 615

### Bali - Denpasar

Dewata Square Blok A3  
Jl. Letda Tantular Renon  
Denpasar 802361  
T. +62 361 225099  
F. +62 361 245099

### Tangerang

Jl. Pahlawan Seribu Ruko BSD  
Sektor 7 Blok RK kav. 9  
Tangerang 15310  
T. +62 21 5387495  
F. +62 21 5387494

### Pekanbaru

Jl. Jendral Sudirman No.73  
Pekanbaru-Riau  
T. +62 761 848414  
F. +62 761 849456

### Pontianak

Jl. MT Haryono No. 6  
Pontianak 78121  
T. +62 561 575674  
F. +62 561 575670

### Jakarta - Centro

Ruko Centro Residence Kav. 4-5  
Tower C Lt. 1 No. 26-29  
Jl. Macan, Daan Mogot  
Jakarta 14450  
T. +62 21 56945227  
F. +62 21 56945226

### Solo

Jl. Slamet Riyadi 330<sup>a</sup>  
Solo 57145  
T. +62 271 736599  
F. +62 271 733478

### Balikpapan

Ruko Bukit Damai Indah  
Blok I, No. 3, Rt.34  
Jl. MT. Haryono, Gunung  
Bahagia, Balikpapan Selatan  
76114  
T. +62 542 746313  
F. +62 542 746317

## IDX CORNER & INVESTMENT GALLERY

### President University

Resto Plaza 1F - Jababeka  
Education Park  
Jl. Ki Hajar Dewantara Raya  
Cikarang - Bekasi 17550  
T. +62 21 89106030

### Universitas Siliwangi Tasikmalaya

Jl. Siliwangi No. 24  
Tasikmalaya 46151  
T. +62 265 323685  
F. +62 265 323534

### Politeknik Kediri

Jl. Mayor Bismo No. 27  
Kediri 64121  
T. +62 354 683128  
F. +62 354 683128

### Universitas Muhammadiyah Sidoarjo

Jl. Majapahit 666 B  
Sidoarjo, Jawa Timur  
T. +62 31 8945444  
F. +62 31 8949333

### Universitas Tanjungpura Pontianak

Jl. Jendral Ahmad Yani  
Pontianak 78124  
T. +62 561 743465  
F. +62 561 766840

### Universitas Pesantren Tinggi Darul Ulum

Kompleks Pp Darul Ulu,  
Peterongan  
Jombang, Jawa Timur 60281  
T. +62 321 873655  
F. +62 321 875771

### STIE "AUB" Surakarta

Jl. Mr. Sartono 97, Cengklik  
Nusukan, Surakarta 57135  
T. +62 271 854803  
F. +62 271 853084

### Universitas Surabaya

Jl. Raya Kalirungkut  
Surabaya 60293  
T. +62 31 298 1203  
F. +62 31 298 1204

### Universitas Muhammadiyah Gresik

Jl. Sumatra 101 GKB  
Gresik 61121  
T. +62 31 395 1414  
F. +62 31 395 2585

### Universitas Negeri Malang

Jl. Surabaya No. 6  
Malang 65145  
T. +62 341 585914  
F. +62 341 55288

### Universitas Muhammadiyah Malang

Jl. Raya Tlogomas 246  
Malang 65144  
T. +62 341 464318-9  
F. +62 341 460782

### FSEI IAIN Antasari

Jl. Ahmad Yani Km. 4,5  
Banjarmasin  
T. + 62 511 3265783

### STIE Malangkececwara

Jl. Terusan Candi Kalasan  
Malang 65142  
T. +62 341 491813  
F. +62 341 495619

### STIESIA Surabaya

Jl. Menur Pumpungan 30  
Surabaya  
T. +62 31 5947505  
F. +62 31 5932218

### Universitas 17 Agustus 1945 Banyuwangi

Jl. Adi Sucipto 26  
Banyuwangi, Jawa Timur  
T. +62 333 419613  
F. +62 333 419163

### STIE Tri Bhakti

Jl. Teuku Umar No. 24  
Cut Meutia Setiakawan,  
Bekasi  
T. +62 21 82429400,  
82429500  
F. +62 271 726156

### Universitas Islam Kalimantan

Jl. Adiyaksa No. 2, Kayu  
Tangi, Banjarmasin  
T. + 62 511 3303871  
F. + 62 511 3303871

### STIKOM Bali

Jalan Puputan No. 86, Renon,  
Denpasar  
T. +62361 244445  
F. +62361 264773

### Universitas Muhammadiyah Pontianak

Fakultas Ekonomi UM  
Pontianak  
Jl. Ahmad Yani, No. 111,  
Pontianak 78124  
T. +62561 743465  
F. +62561 766840

### Universitas Negeri Makassar

Fakultas Ekonomi Gedung BT  
Lt.2  
Jl. A.P. Pettarani, Kampus  
UNM, Gunungsari Baru  
Makassar 90222  
T. +62 411 889464 / 881244  
F. +62 411 887604

### STIE AAS Surakarta

Jl. Slamet Riyadi No. 361,  
Kartasura, Surakarta  
T. +62 271 726156  
F. +62 271 726156

### UPN "Veteran" Yogyakarta

Jl. Babarsari 2, Tambak Bayan  
Yogyakarta  
T. +62 274 485268  
F. +62 274 487147

### Disclaimer:

Information, opinions and recommendations contained in this document are presented by PT Reliance Securities Tbk. from sources that are considered reliable and dependable. This document is not an offer, invitation or any kind of representations to decide to buy or sell stock. Investment decisions taken based on this document is not the responsibility of PT Reliance Securities Tbk. PT Reliance Securities Tbk. reserves the right to change the contents of this document at any time without prior notice.