

IHSG



5644.16
16.222
0.29%

Vol (Mn): 8715
Val (Bn): 41865

LQ45



933.558
4.141
0.45%

Sector Indices	Last	Change	Change %
Agriculture	1864.58	20.99	1.13
Basic Industry	609.34	(0.69)	(0.11)
Consumer	2438.49	10.29	0.42
Finance	883.08	0.41	0.05
Infrastructure	1110.10	6.11	0.55
Manufacture	1461.49	2.94	0.20
Mining	1538.50	(20.78)	(1.35)
Misc Industry	1457.52	(2.49)	(0.17)
Property	505.75	13.69	2.71
Trade	925.26	(0.24)	(0.03)

Source: relitrade next G

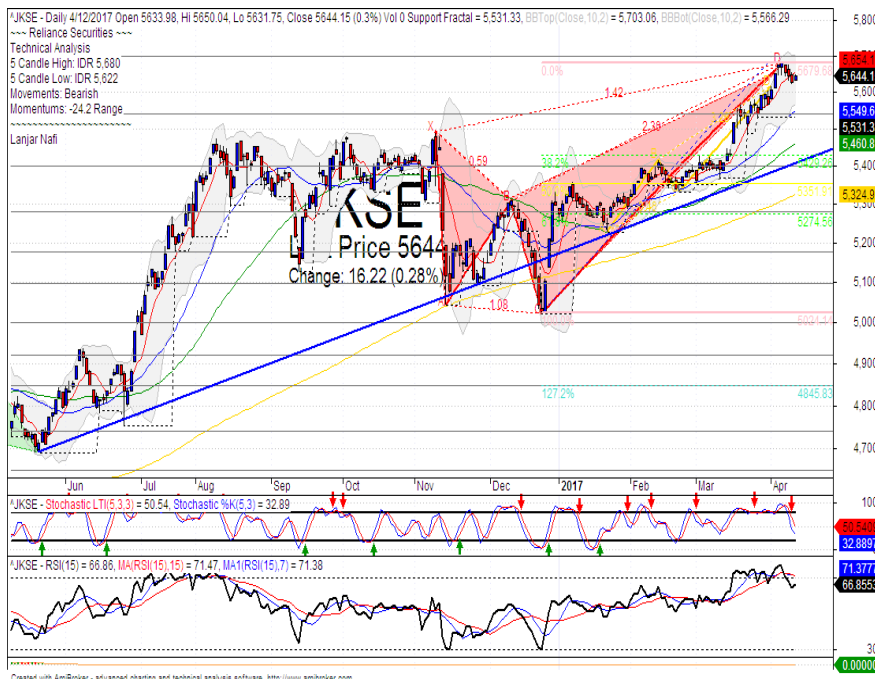
Most Active	Last	Change %	Freq
MAMI	79	14.5	11,336
RIMO	144	(17.7)	9,499
MDRN	62	(4.6)	8,976
DGIK	130	5.7	8,668
TMPI	65	8.3	8,607

Most Volume	Last	Change %	M share
MYRX	137	(0.7)	15,802
MAMI	79	14.5	6,141
BRMS	85	0.0	4,942
RIMO	144	(17.7)	4,502
BKSL	93	3.3	3,669

Most Value	Last	Change %	Rp Bil
MYRX	137	(0.7)	219.22
BBCA	17,650	1.1	199.76
LPKR	775	6.2	195.95
PTPP	3,380	7.0	164.39
BBNI	6,372	0.0	158.00

Source: relitrade next G

IHSG Technical Review



R3	6030
R2	5860
R1	5700
Last	5644.16
S1	5540
S2	5400
S3	5280

Comment:
 Bearish butterfly harmonic pattern formations. Reversal signal. Huge trading volume.

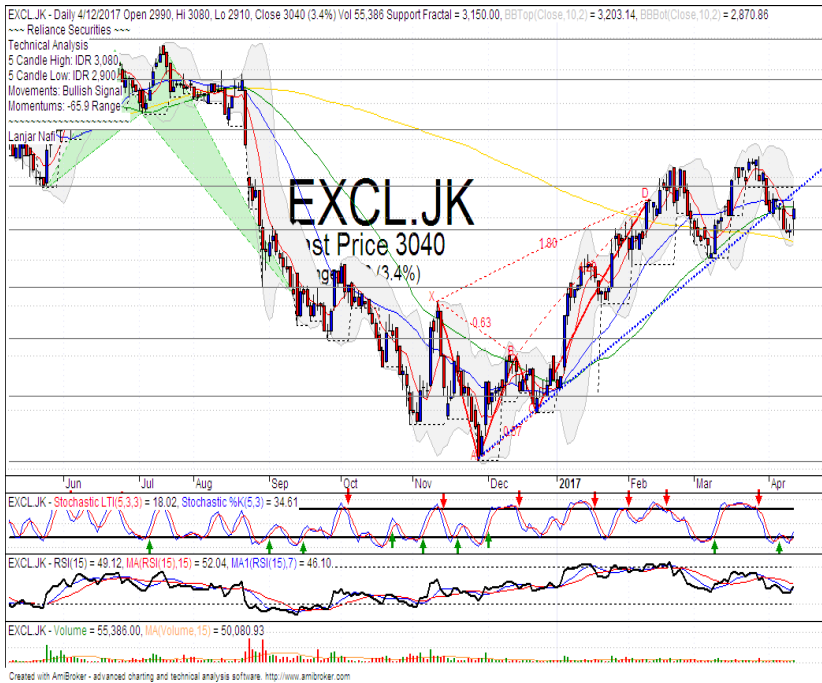
Stochastic, dead-cross at overbought oscillator.

RSI bearish reversal momentum at overbought oscillator.

Long term bullish trend movement.

Stop-loss level if confirmations the harmonic pattern with broke the MA7 at 5588. Downside potential until 5487.

EXCL



R3	3740
R2	3450
R1	3160
Last	3040
S1	2940
S2	2670
S3	2480

BUY

Comment:

Bullish kicker signal and whipsaw at MA200 support level.

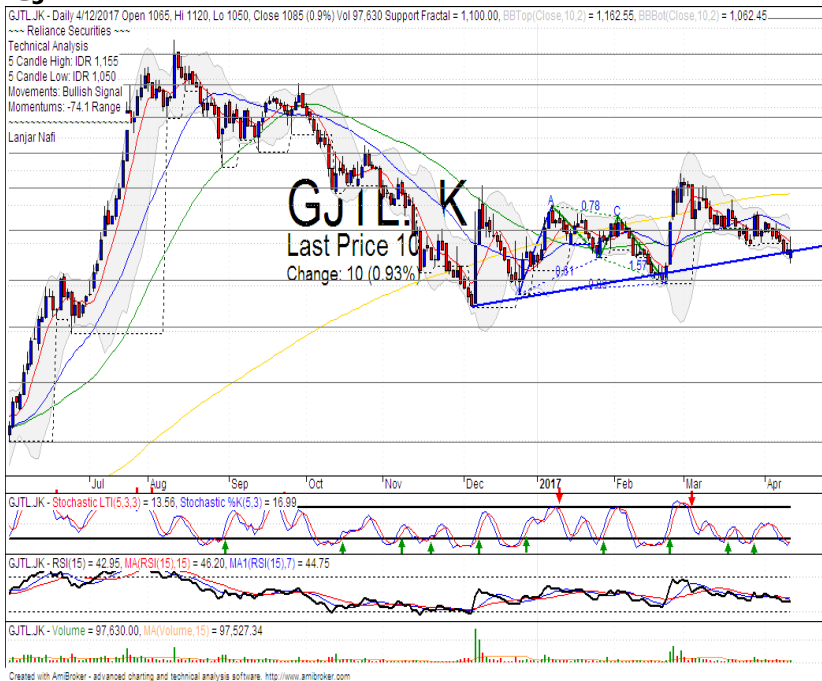
Stochastic, golden-cross at oversold oscillator.

RSI bullish reversal momentum at oversold area.

Short term bearish trend movement.

Upside target to upper Bollinger bands at 3230. Stop-loss level if break the MA200 at 2800. Recommended buying price at 3020.

GJTL



R3	1350
R2	1250
R1	1135
Last	1085
S1	1015
S2	905
S3	795

TRADING BUY

Comment:

Rebounded at bullish trend support level with bullish harami formations.

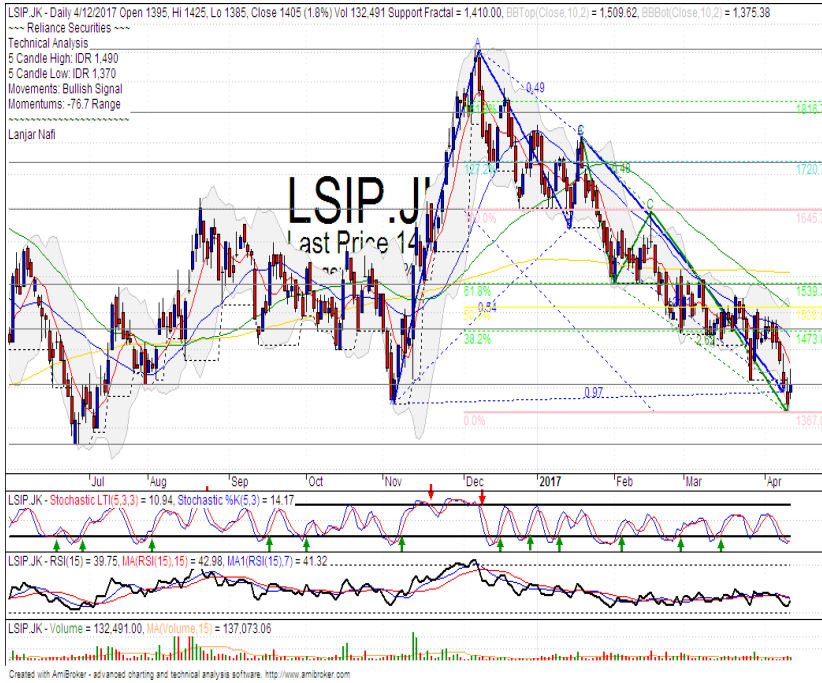
Stochastic golden-cross at oversold oscillator.

RSI bullish reversal momentum at middle oscillator.

Medium term bullish trend movement.

Upside target to MA200 resistance level at 1235. Stop-loss level at 1050 if broke the bullish trend support level.

LSIP



R3	1645
R2	1540
R1	1475
Last	1410
S1	1400
S2	1330
S3	1250

TRADING BUY

Comment:
 Bullish separating line candlestick pattern, Moderate trading volume. Reversal signal. AB=CD pattern.

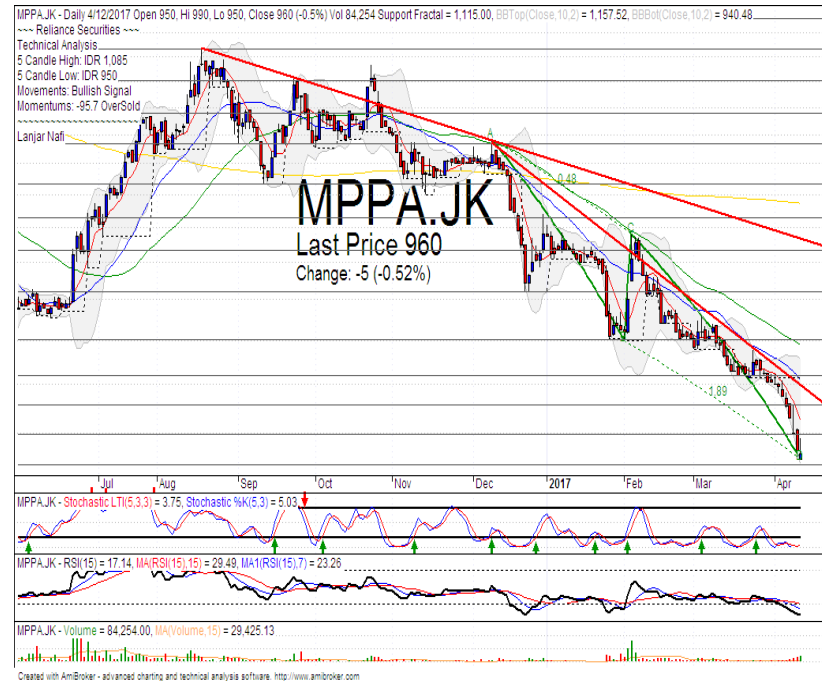
Stochastic golden-cross at oversold oscillator. Broad upside potential.

RSI bullish reversal momentum potential at oversold.

Medium term bearish trend movement.

Upside target until ideal target from AB=CD pattern at 1475. Stop-loss level if false confirmations the bullish pattern at 1380.

MPPA



R3	1115
R2	1055
R1	995
Last	960
S1	940
S2	890
S3	845

SPECULATIVE BUY

Comment:
 Inverted hammer candlestick pattern. Huge trading volume. Reversal signal.

Stochastic golden-cross at oversold oscillator. broad upside potential.

RSI reversal momentum at oversold oscillator.

Long and Medium term bearish trend movement.

Upside target to channeling bearish trend resistance level at 1055. Stop-loss level if false confirmations the reversal pattern at 930.

Stocks	S2	S1	Closing Price	R1	R2	Technical Notes	Rec	Stop Loss	Rec Buy Prc	Target Price
Plantation										
AALI	13,000	14,000	14,550	14,900	15,850	Stoch golden-cross	TB	14,000		15,000
LSIP	1,250	1,300	1,405	1,405	1,545	Bullish separating	TB	1,350		1,465
Mining										
INCO	1,965	2,120	2,250	2,300	2,500	Oversold	TB	2,200		2,500
Consumer										
UNVR	42,500	44,000	45,475	46,000	47,800	Consolidations	PS	45,000		
INDF	7,250	7,900	7,975	8,500	9,125	Stoch golden-cross	TB	7,800		8,500
KLBF	1,485	1,540	1,595	1,600	1,650	Consolidations	H	1,550		1,600
Trading										
ACES	810	870	905	920	970	Bearish momentum	S	900		
AKRA	6,100	6,350	6,400	6,600	7,000	Consolidations	TB	6,300		6,600
UNTR	26,750	28,175	29,000	29,750	31,500	Consolidations	H	28,400		
Property & Construction										
LPCK	3,850	4,000	4,150	4,160	4,300	Stoch golden-cross	TB	4,040		4,300
WIKA	1,990	2,200	2,360	2,400	2,600	Bullish Consolidations	H	2,200		2,450
BSDE	1,630	1,720	1,780	1,830	1,935	Oversold	W	1,720		
WSKT	2,120	2,260	2,340	2,410	2,600	Stoch golden-cross	H	2,250		2,410
ADHI	2,200	2,300	2,360	2,420	2,530	Bullish Consolidations	H	2,280		2,450
Basic Industry & Chemical										
SMGR	8,150	8,725	8,975	9,350	9,900	Consolidations	TB	8,700		9,350
CPIN	3,000	3,210	3,200	3,400	3,580	Stoch golden-cross	TB	3,200		3,480
MAIN	1,080	1,180	1,255	1,300	1,400	Consolidations	W	1,200		
INTP	15,500	16,350	16,500	17,500	18,400	Bearish momentum	S	16,350		
Miscellaneous										
SRIL	270	288	302	316	350	Stoch golden-cross	TB	284		336
ASII	7,900	8,250	8,575	8,650	9,000	Stoch golden-cross	TB	8,200		8,800
Finance										
BBTN	2,100	2,200	2,320	2,360	2,480	Consolidations	S	2,180		
BMRI	11,100	11,450	11,700	11,800	12,200	Consolidations	W	11,450		
BTPN	2,340	2,550	2,600	2,770	3,000	Bullish momentum	B	2,540	2,580	2,770
BJBR	1,750	1,915	1,970	2,140	2,210	Consolidations	W	2,000		
BBRI	11,750	12,350	12,775	13,000	13,500	Bearish momentum	S	12,700		
Infrastructure										
TLKM	3,710	3,950	4,150	4,200	4,400	Stoch golden-cross	TB	4,100		4,300
PGAS	2,200	2,360	2,530	2,550	2,800	Consolidations	TB	2,350		2,730

Source : Reliance Securities

Analyst Conclusions:

The index reached the all time high level. Be care full from distributions phase.

Legend :

- B: BUY (allocate till 100% of the weighted capital to accumulate, higher than 50% upside probability)
- SB: SPECULATIVE BUY (allocate 25%-50% of the weighted capital to accumulate, 25%-50% upside probability)
- W: WAIT (wait for proper entry level, do the stop-loss if necessary)
- H: HOLD (hold the portfolio position, aim for the best price to distribute)
- PS: PARTIAL SELL (distribute 25%-50% part of the portfolio, 25%-50% downside probability)
- S: SELL (distribute till 100% of the portfolio, higher than 50% downside probability)
- TB: TRADING BUY (short term or intraday trading within a tight trading range. Highly speculative).

Ticker	Resistance	Price	Support	Weekly	Weekly	Indicator			Moving Average			
	Fractal	4/12/2017	Fractal	High	Low	Stochastic	RSI	B. Band	25 Days	50 Days	200 Days	
AALI.JK	15,200	14,550	14,575	15,025	14,725	Oversold	Bullish	Neutral	Middle Bands	Under	Under	Under
ACES.JK	950	905	815	950	905	Neutral	Bearish	Neutral	Middle Bands	Upper	Upper	Upper
ADHI.JK	2,420	2,360	2,150	2,380	2,210	Oversold	Bullish	Neutral	Middle Bands	Upper	Upper	Upper
ADRO.JK	1,845	1,890	1,840	1,920	1,890	Neutral	Bearish	Neutral	Middle Bands	Upper	Upper	Upper
AISA.JK	2,250	2,350	2,150	2,380	2,220	Neutral	Bullish	Neutral	Upper Bands	Upper	Upper	Upper
AKRA.JK	6,750	6,400	6,125	6,400	6,300	Neutral	Bullish	Neutral	Middle Bands	Upper	Under	Under
ANTM.JK	750	725	710	730	715	Oversold	Bullish	Neutral	Middle Bands	Under	Under	Under
APLN.JK	240	220	210	222	214	Neutral	Bullish	Neutral	Middle Bands	Under	Under	Under
ASII.JK	8,925	8,575	8,500	8,750	8,600	Neutral	Bullish	Neutral	Middle Bands	Upper	Upper	Upper
ASRI.JK	370	358	346	366	352	Oversold	Bullish	Neutral	Middle Bands	Under	Under	Under
BBCA.JK	17,750	17,650	16,550	17,750	17,375	Neutral	Bearish	Overbought	Upper Bands	Upper	Upper	Upper
BBKP.JK	630	645	625	670	650	Neutral	Bullish	Neutral	Middle Bands	Upper	Upper	Upper
BBNI.JK	6,700	6,375	6,350	6,700	6,425	Neutral	Bearish	Neutral	Middle Bands	Under	Upper	Upper
BBRI.JK	13,250	12,775	12,800	13,250	12,950	Neutral	Bearish	Neutral	Lower Bands	Upper	Upper	Upper
BBTN.JK	2,390	2,320	2,250	2,390	2,320	Neutral	Bearish	Neutral	Middle Bands	Upper	Upper	Upper
BDMN.JK	5,000	4,760	4,700	5,000	4,770	Neutral	Bearish	Neutral	Middle Bands	Under	Upper	Upper
BHIT.JK	131	123	126	130	127	Neutral	Bearish	Overbought	Lower Bands	Under	Under	Under
BJBR.JK	2,470	1,970	1,960	2,470	2,130	Neutral	Bearish	Neutral	Middle Bands	Under	Under	Upper
BJTM.JK	840	685	615	760	700	Oversold	Bearish	Neutral	Middle Bands	Upper	Upper	Upper
BKSL.JK	100	93	90	95	92	Oversold	Bullish	Neutral	Middle Bands	Under	Under	Under
BMRI.JK	11,450	11,700	11,600	12,425	11,800	Neutral	Bearish	Neutral	Middle Bands	Under	Upper	Upper
BMTR.JK	535	535	515	565	550	Neutral	Bearish	Neutral	Middle Bands	Upper	Under	Under
BSDE.JK	1,900	1,780	1,820	1,875	1,790	Oversold	Bullish	Neutral	Lower Bands	Under	Under	Under
BTPN.JK	2,780	2,600	2,540	2,620	2,580	Neutral	Bullish	Neutral	Middle Bands	Under	Under	Under
BWPT.JK	344	374	332	384	346	Neutral	Bullish	Neutral	Upper Bands	Upper	Upper	Upper
CMNP.JK	1,490	1,440	1,440	1,450	1,450	Neutral	Bullish	Neutral	Lower Bands	Under	Under	Under
CPIN.JK	3,400	3,200	3,180	3,330	3,240	Neutral	Bearish	Neutral	Middle Bands	Under	Under	Under
CSAP.JK	462	458	454	464	458	Neutral	Bullish	Neutral	Middle Bands	Under	Under	Under
CTRA.JK	1,295	1,235	1,080	1,265	1,125	Neutral	Bullish	Neutral	Middle Bands	Upper	Under	Under
DILD.JK	422	430	398	450	414	Neutral	Bullish	Neutral	Upper Bands	Upper	Under	Under
EXCL.JK	3,310	3,040	3,150	3,080	2,970	Oversold	Bullish	Neutral	Middle Bands	Under	Under	Upper
GGRM.JK	68,575	64,950	65,025	68,575	65,500	Neutral	Bearish	Neutral	Middle Bands	Under	Upper	Under
GIAA.JK	404	360	340	404	366	Neutral	Bearish	Neutral	Middle Bands	Upper	Upper	Under
GJTL.JK	1,185	1,085	1,100	1,155	1,100	Oversold	Bullish	Neutral	Middle Bands	Under	Under	Under
HEXA.JK	3,980	4,400	4,100	4,440	4,120	Overbought	Bullish	Overbought	Upper Bands	Upper	Upper	Upper
HRUM.JK	2,880	2,670	2,400	2,880	2,690	Neutral	Bearish	Neutral	Middle Bands	Upper	Upper	Upper
ICBP.JK	8,950	8,100	8,150	8,325	8,125	Oversold	Bullish	Neutral	Middle Bands	Under	Under	Under
IMAS.JK	1,250	1,160	1,150	1,150	1,155	Oversold	Bearish	Neutral	Middle Bands	Under	Under	Under
INCO.JK	2,370	2,250	2,270	2,370	2,290	Oversold	Bearish	Neutral	Middle Bands	Under	Under	Under
INDF.JK	8,300	7,975	7,925	8,075	8,000	Neutral	Bearish	Neutral	Middle Bands	Under	Under	Under
INDY.JK	805	710	725	765	745	Oversold	Bearish	Neutral	Middle Bands	Under	Under	Upper
INTA.JK	406	470	378	482	454	Overbought	Bearish	Overbought	Middle Bands	Upper	Upper	Upper
INTP.JK	17,200	16,500	15,300	17,175	16,850	Neutral	Bearish	Neutral	Middle Bands	Upper	Upper	Upper
ITMG.JK	22,300	19,850	16,150	20,950	20,100	Oversold	Bullish	Neutral	Middle Bands	Upper	Upper	Upper
JFJA.JK	1,665	1,620	1,590	1,665	1,645	Neutral	Bearish	Neutral	Middle Bands	Upper	Under	Upper
JSMR.JK	4,650	4,680	4,620	4,740	4,670	Neutral	Bearish	Neutral	Middle Bands	Upper	Upper	Under
KJAJ.JK	322	328	324	332	328	Neutral	Bullish	Neutral	Middle Bands	Upper	Upper	Upper
KLBF.JK	1,620	1,595	1,545	1,620	1,570	Neutral	Bearish	Neutral	Middle Bands	Upper	Upper	Upper
KRAS.JK	690	600	585	625	595	Oversold	Bullish	Neutral	Middle Bands	Under	Under	Under
LPCK.JK	4,430	4,150	4,190	4,250	4,130	Oversold	Bullish	Neutral	Middle Bands	Under	Under	Under
LPKR.JK	740	775	720	775	730	Neutral	Bullish	Neutral	Upper Bands	Upper	Upper	Under
LPPF.JK	13,550	13,875	13,125	13,875	13,275	Neutral	Bullish	Neutral	Middle Bands	Upper	Under	Under
LSIP.JK	1,505	1,405	1,410	1,490	1,415	Oversold	Bullish	Neutral	Middle Bands	Under	Under	Under
MAIN.JK	1,410	1,255	1,210	1,410	1,275	Neutral	Bearish	Neutral	Middle Bands	Upper	Upper	Under
MAPI.JK	6,750	6,350	5,675	6,750	6,350	Neutral	Bearish	Neutral	Middle Bands	Upper	Upper	Upper
MASA.JK	270	246	244	260	246	Neutral	Bearish	Neutral	Middle Bands	Upper	Upper	Upper
MNCN.JK	1,850	1,900	1,730	1,910	1,880	Overbought	Bearish	Overbought	Middle Bands	Upper	Upper	Upper
MPPA.JK	1,180	960	1,115	1,085	990	Oversold	Bullish	Overbought	Lower Bands	Under	Under	Under
MTLA.JK	340	324	320	340	322	Oversold	Bearish	Neutral	Middle Bands	Upper	Upper	Upper
MYOR.JK	2,160	2,060	2,060	2,100	2,090	Neutral	Bearish	Neutral	Middle Bands	Under	Upper	Upper
PGAS.JK	2,580	2,530	2,410	2,550	2,460	Neutral	Bullish	Neutral	Middle Bands	Under	Under	Under
PTBA.JK	14,200	11,975	12,725	13,700	13,000	Oversold	Bearish	Neutral	Middle Bands	Under	Upper	Upper
RALS.JK	1,185	1,155	1,145	1,190	1,160	Neutral	Bearish	Neutral	Middle Bands	Under	Under	Under
ROTI.JK	1,655	1,545	1,445	1,655	1,600	Neutral	Bearish	Neutral	Middle Bands	Upper	Upper	Under
SCMA.JK	2,930	2,900	2,780	2,910	2,890	Neutral	Bullish	Neutral	Middle Bands	Upper	Upper	Upper
SCRO.JK	2,070	2,020	1,990	2,070	2,040	Neutral	Bearish	Neutral	Middle Bands	Under	Under	Upper
SIMP.JK	690	650	615	690	650	Neutral	Bearish	Neutral	Middle Bands	Upper	Upper	Upper
SMCB.JK	940	900	900	910	905	Oversold	Bearish	Neutral	Middle Bands	Under	Under	Under
SMGR.JK	9,675	8,975	8,822	9,200	8,918	Neutral	Bearish	Neutral	Middle Bands	Under	Under	Under
SMRA.JK	1,380	1,385	1,295	1,395	1,330	Neutral	Bullish	Neutral	Middle Bands	Upper	Upper	Under
SRIL.JK	392	302	298	316	308	Oversold	Bullish	Neutral	Middle Bands	Under	Under	Upper
SSIA.JK	690	780	725	800	750	Overbought	Bearish	Overbought	Middle Bands	Upper	Upper	Upper
SSMS.JK	1,510	1,715	1,450	1,720	1,695	Neutral	Bullish	Neutral	Middle Bands	Upper	Upper	Upper
TLKM.JK	4,320	4,150	4,090	4,200	4,140	Oversold	Bullish	Neutral	Middle Bands	Upper	Upper	Upper
TOTL.JK	815	810	770	820	795	Neutral	Bullish	Neutral	Middle Bands	Upper	Upper	Upper
UNTR.JK	29,450	29,000	26,500	29,200	28,775	Neutral	Bullish	Neutral	Middle Bands	Upper	Upper	Upper
UNVR.JK	44,000	45,475	42,750	45,500	45,000	Overbought	Bearish	Overbought	Middle Bands	Upper	Upper	Upper

Source : Reliance Research

Legend :

- Movement: Bullish and Bearish (Indicator Stochastic)
- Momentum: Oversold, Overbought and Neutral (Indicator RSI)
- Resistance Fractal: Strong Resistance
- Support Fractal: Strong Support
- Green: Good Conditions
- Red: Poor Conditions

HEAD OFFICE

Reliance Building

Jl. Pluit Sakti Raya No. 27AB,
Pluit
Jakarta 14450
T. +62 21 661 7768
F. +62 21 661 9884

RESEARCH DIVISION

Robertus Yanuar Hardy

robertus@reliance-securities.com

Rio Adrianus

rio.adrianus@reliance-securities.com

Lanjar Nafi Taulat I

lanjar@reliance-securities.com

Aji Setiawan

aji@reliance-securities.com

Shanti Dwi Jayanti

santi@reliance-securities.com

Senior Analyst

Research Analyst

Technical Research Analyst

Associate Research Analyst

Associate Research Analyst

EQUITY DIVISION

Jakarta- Pluit

Jl. Pluit Sakti Raya No. 27AB,
Pluit
Jakarta 14450
T. +62 21 661 7768
F. +62 21 661 9884

Bandung

Jl.Cisangkuy No.58
Bandung 40115
T. +62 22 721 8200
F. +62 22 721 9255

Surabaya - Gubeng

Jl. Bangka No. 22
Surabaya 60281
T. +62 31 501 1128
F. +62 31 503 3196

Makassar

Jl. Boto Lempangan No. 34 J
Makassar- Sulawesi Selatan
T. +62 411 3632388
F. +62 411 3614634

Jakarta - Sudirman

Menara Batavia Ground Floor
Jl.KH.Mas Mansyur Kav 126
Jakarta 10220
T. +62 21 57905455
F. +62 21 57950728

Tasikmalaya

Ruko Tasik Indah Plaza No.21
Jl. KHZ Mustofa No. 345
Tasikmalaya 46121
T. +62 265 345000
F. +62 265 345003

Surabaya - Diponegoro

Jl. Diponegoro No.26D
Surabaya 60261
T. +62 31 567 0388
F. +62 31 561 0528

Medan

Jl. Teuku Amir Hamzah No.40-O
Medan 20117
T. +62 61 6638592
F. +62 61 6638023

Jakarta - Kebon Jeruk

Plaza Kebon Jeruk
Jl.Raya Perjuangan Blok A/2
Jakarta 11530
T. +62 21 532 4074
F. +62 21 536 2157

Malang

Jl. Guntur No. 19
Malang 65112
T. +62 341 347 611
F. +62 341 347 615

Bali - Denpasar

Dewata Square Blok A3
Jl. Letda Tantular Renon
Denpasar 802361
T. +62 361 225099
F. +62 361 245099

Tangerang

Jl. Pahlawan Seribu Ruko BSD
Sektor 7 Blok RK kav. 9
Tangerang 15310
T. +62 21 5387495
F. +62 21 5387494

Pekanbaru

Jl. Jendral Sudirman No.73
Pekanbaru-Riau
T. +62 761 848414
F. +62 761 849456

Pontianak

Jl. MT Haryono No. 6
Pontianak 78121
T. +62 561 575674
F. +62 561 575670

Jakarta - Centro

Ruko Centro Residence Kav. 4-5
Tower C Lt. 1 No. 26-29
Jl. Macan, Daan Mogot
Jakarta 14450
T. +62 21 56945227
F. +62 21 56945226

Solo

Jl. Slamet Riyadi 330^a
Solo 57145
T. +62 271 736599
F. +62 271 733478

Balikpapan

Ruko Bukit Damai Indah
Blok I, No. 3, Rt.34
Jl. MT. Haryono, Gunung
Bahagia, Balikpapan Selatan
76114
T. +62 542 746313
F. +62 542 746317

IDX CORNER & INVESTMENT GALLERY

President University

Resto Plaza 1F - Jababeka
Education Park
Jl. Ki Hajar Dewantara Raya
Cikarang - Bekasi 17550
T. +62 21 89106030

Universitas Siliwangi Tasikmalaya

Jl. Siliwangi No. 24
Tasikmalaya 46151
T. +62 265 323685
F. +62 265 323534

Politeknik Kediri

Jl. Mayor Bismo No. 27
Kediri 64121
T. +62 354 683128
F. +62 354 683128

Universitas Muhammadiyah Sidoarjo

Jl. Majapahit 666 B
Sidoarjo, Jawa Timur
T. +62 31 8945444
F. +62 31 8949333

Universitas Tanjungpura Pontianak

Jl. Jendral Ahmad Yani
Pontianak 78124
T. +62 561 743465
F. +62 561 766840

Universitas Pesantren Tinggi Darul Ulum

Kompleks Pp Darul Ulu,
Peterongan
Jombang, Jawa Timur 60281
T. +62 321 873655
F. +62 321 875771

STIE "AUB" Surakarta

Jl. Mr. Sartono 97, Cengklik
Nusukan, Surakarta 57135
T. +62 271 854803
F. +62 271 853084

Universitas Surabaya

Jl. Raya Kalirungkut
Surabaya 60293
T. +62 31 298 1203
F. +62 31 298 1204

Universitas Muhammadiyah Gresik

Jl. Sumatra 101 GKB
Gresik 61121
T. +62 31 395 1414
F. +62 31 395 2585

Universitas Negeri Malang

Jl. Surabaya No. 6
Malang 65145
T. +62 341 585914
F. +62 341 55288

Universitas Muhammadiyah Malang

Jl. Raya Tlogomas 246
Malang 65144
T. +62 341 464318-9
F. +62 341 460782

FSEI IAIN Antasari

Jl. Ahmad Yani Km. 4,5
Banjarmasin
T. + 62 511 3265783

STIE Malangkececwara

Jl. Terusan Candi Kalasan
Malang 65142
T. +62 341 491813
F. +62 341 495619

STIESIA Surabaya

Jl. Menur Pumpungan 30
Surabaya
T. +62 31 5947505
F. +62 31 5932218

Universitas 17 Agustus 1945 Banyuwangi

Jl. Adi Sucipto 26
Banyuwangi, Jawa Timur
T. +62 333 419613
F. +62 333 419163

STIE Tri Bhakti

Jl. Teuku Umar No. 24
Cut Meutia Setiakawan,
Bekasi
T. +62 21 82429400,
82429500
F. +62 271 726156

Universitas Islam Kalimantan

Jl. Adiyaksa No. 2, Kayu
Tangi, Banjarmasin
T. + 62 511 3303871
F. + 62 511 3303871

STIKOM Bali

Jalan Puputan No. 86, Renon,
Denpasar
T. +62361 244445
F. +62361 264773

Universitas Muhammadiyah Pontianak

Fakultas Ekonomi UM
Pontianak
Jl. Ahmad Yani, No. 111,
Pontianak 78124
T. +62561 743465
F. +62561 766840

Universitas Negeri Makassar

Fakultas Ekonomi Gedung BT
Lt.2
Jl. A.P. Pettarani, Kampus
UNM, Gunungsari Baru
Makassar 90222
T. +62 411 889464 / 881244
F. +62 411 887604

STIE AAS Surakarta

Jl. Slamet Riyadi No. 361,
Kartasura, Surakarta
T. +62 271 726156
F. +62 271 726156

UPN "Veteran" Yogyakarta

Jl. Babarsari 2, Tambak Bayan
Yogyakarta
T. +62 274 485268
F. +62 274 487147

Disclaimer:

Information, opinions and recommendations contained in this document are presented by PT Reliance Securities Tbk. from sources that are considered reliable and dependable. This document is not an offer, invitation or any kind of representations to decide to buy or sell stock. Investment decisions taken based on this document is not the responsibility of PT Reliance Securities Tbk. PT Reliance Securities Tbk. reserves the right to change the contents of this document at any time without prior notice.