

## Weekly IHSG



5653.49  
85.38  
1.53%

Vol (Mn): 46.61  
Val (Bn): 28.78  
F Net B (Bn): 3,313

## Weekly LQ-45



937.24  
15.71  
1.70%

Sector	Last	WoW Chg	(%)
Agriculture	1883.05	8.58	0.46%
Basic Industry	610.62	17.29	2.91%
Composite	5653.49	85.38	1.53%
Consumer	2453.09	10.88	0.45%
Finance	891.78	17.88	2.05%
Infrastructure	1097.16	-12.87	-1.16%
Manufacture	1466.45	7.00	0.48%
Mining	1548.08	21.15	1.39%
Misc Industry	1452.33	-28.61	-1.93%
Property	494.91	-9.57	-1.90%
Trade	921.25	20.34	2.26%

Source: Bloomberg

International	Last	WoW Chg	(%)
DJIA	20,656.10	-7.12	-0.03%
Nasdaq	5,877.81	-33.93	-0.57%
S&P 500	2,355.54	5.79	0.25%
FTSE 100	7,349.37	18.08	0.25%
Nikkei 225	18,664.63	-318.60	-1.68%
Hang Seng	24,267.30	5.82	0.02%
Sanghai Comp	3,286.6	64.11	1.99%

Source: Bloomberg

Exchange Rates	Last	WoW Chg	(%)
USD / IDR	13322	-9.00	-0.07%
US \$ Index	101.27	0.63	0.63%
EUR / USD	1.06	-0.01	-0.70%
USD / JPY	111.44	0.91	0.82%
GBP / USD	1.24	-0.01	-0.40%
USD / CNY	6.91	0.02	0.29%
AUD / USD	0.75	-0.01	-1.10%

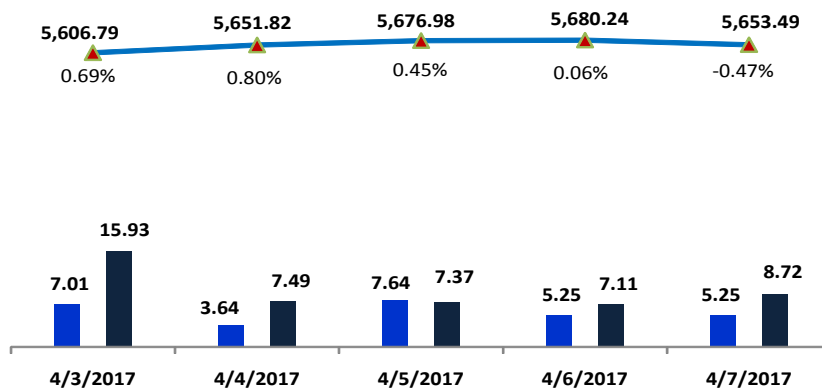
Others	Last	WoW Chg	(%)
S&P 500 Vltv (VIX)	12.87	0.05	0.39%
Baltic Dry	1,223.00	-59.00	-4.60%

Source: Bloomberg

## Monday Recommendation Flashback

Stock	Rec.	04/04/2016 (close)	Stop Loss	Loss	Week's Highest	Date	Potential Gain	Week's Lowest	Date	Potential Gain
MNCN	PS	1,840	354	-80.76%	1,885	4/7/2017	2.45%	1,800	4/4/2017	-2.17%
PTBA	PS	13,200	13,000	-1.52%	14,200	4/4/2017	7.58%	12,725	4/6/2017	-3.60%
SMBR	PS	3,540	3,200	-9.60%	3,650	4/5/2017	3.11%	3,340	4/4/2017	-5.65%
EXCL	TB	3,010	2,970	-1.33%	3,120	4/4/2017	3.65%	2,940	4/7/2017	-2.33%

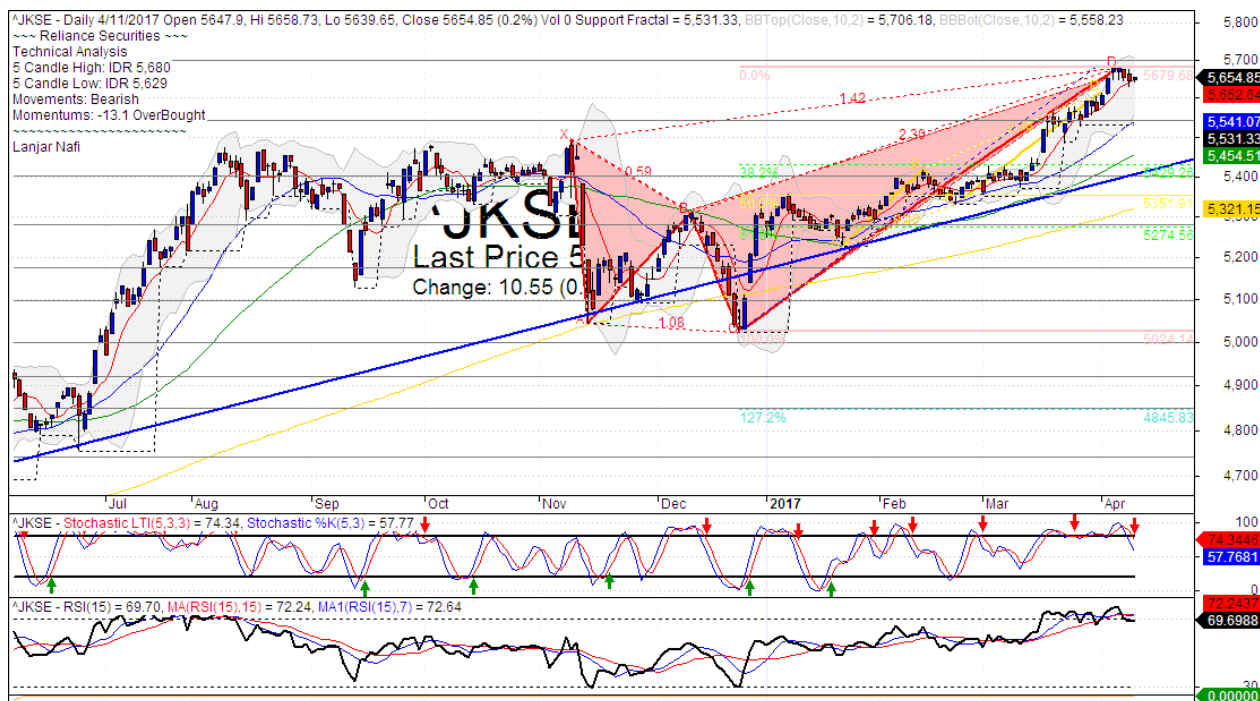
## IHSG on the Week (03/31/2017 - 04/07/2016)



LS-27 Close	931.00	940.87	943.81	944.96	937.24
LS-27 % Chg	0.01	0.01	0.00	0.00	-0.01
Frgn Net Buy (Bn)	438.50	616.31	316.37	585.55	1356.50
	1369.51	1557.19	1260.18	1530.51	2293.73

your **reliable** partner | 1

### IHSG



S1	5545	R1	5700
S2	5400	R2	5860
S3	5280	R3	6000

#### Comment:

IHSG bearish consolidations at the resistance level last week. Trading range 5629–5680.

In the first session of the week. The index pulled back the upper Bollinger bands and trying to confirmations the bearish butterfly harmonic pattern.

Stochastic, dead-cross at overbought oscillator. Broad downside potential. RSI indicator reversal reached the overbought oscillator.

Long term bullish trend movement.

Stop-loss level if broke the MA7 support level at 5649. Downside potential until 5540 (MA25 support level).

### Infrastructure Index



Created with AmiBroker - advanced charting and technical analysis software. <http://www.amibroker.com>

S1	1100	R1	1150
S2	1045	R2	1195
S3	1000	R3	1240

#### Comment:

Infrastructure index surged decline after forming the bearish meeting line last week. Trading range 1091-1133.

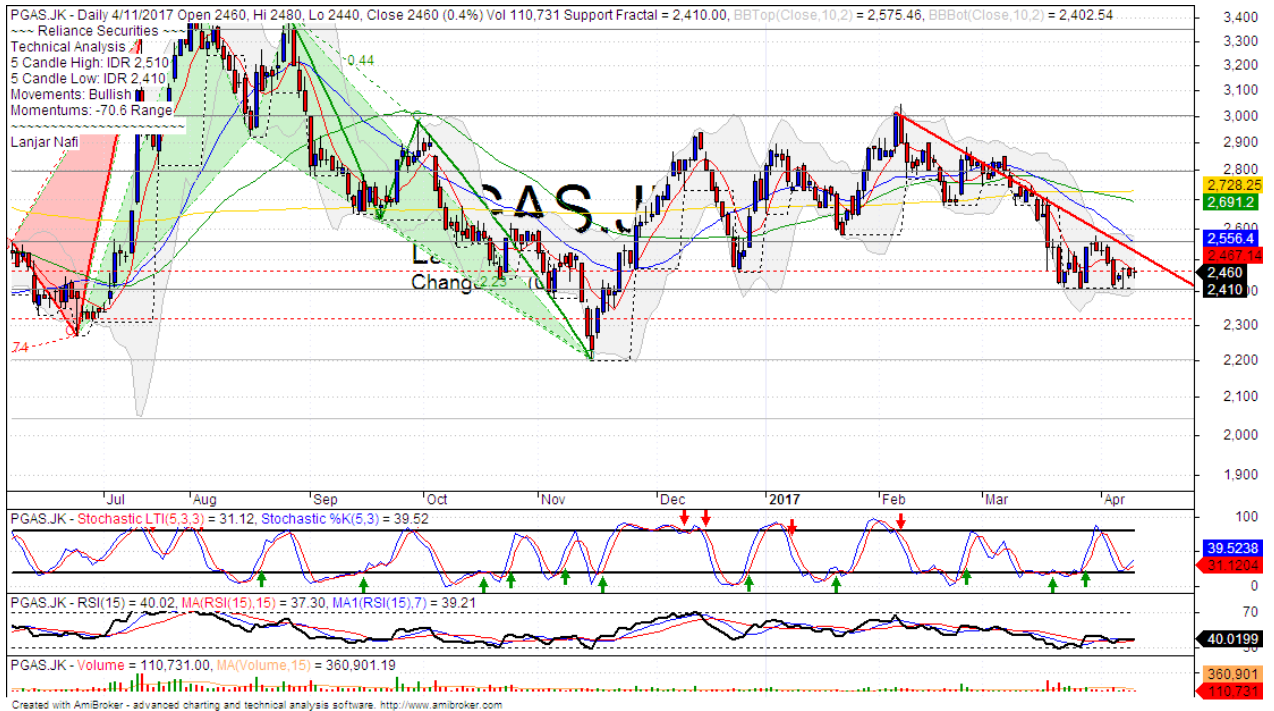
By the first session today, the index has rebounded at MA25 and bullish trend support level. Reversal signal.

Stochastic has golden-cross at oversold oscillator and broad upside potential. RSI consolidations momentum at middle oscillator.

Long term bullish trend movement.

Upside target to 1150. This week resistance at 1125 (Upper Bollinger bands resistance level). Stop-loss position if broke the support level at 1090.

### PGAS



S1	2400	R1	2550
S2	2200	R2	2800
S3	2040	R3	3000

#### Comment:

PGAS has consolidations at support level last week. Trading range at 2410–2510.

By the first session this week, the price has forming the double bottom chart pattern indications.

Stochastic golden-cross at oversold oscillator. Broad upside potential. RSI consolidations at oversold oscillator with flat momentum.

Medium term bearish trend movement.

#### Upside scenario: (Probability 70%)

If the price has a break out confirmations at 2520. Upside target to 2730 (MA200 and double bottom target level).

#### Downside scenario: (Probability 30%)

Stop loss level at 2380 (Broke the support level). Do a tight stop loss on this level. If a break down appeared, the price will potentially continue to 2320.

## HEAD OFFICE

### Reliance Building

Jl. Pluit Sakti Raya No. 27AB,  
Pluit  
Jakarta 14450  
T. +62 21 661 7768  
F. +62 21 661 9884

## RESEARCH DIVISION

### Robertus Yanuar Hardy

*robertus@reliance-securities.com*

### Rio Adrianus

*rio.adrianus@reliance-securities.com*

### Lanjar Nafi Taulat I

*lanjar@reliance-securities.com*

### Aji Setiawan

*aji@reliance-securities.com*

### Shanti Dwi Jayanti

*santi@reliance-securities.com*

Senior Analyst

Research Analyst

Technical Research Analyst

Associate Research Analyst

Associate Research Analyst

## EQUITY DIVISION

### Jakarta- Pluit

Jl. Pluit Sakti Raya No. 27AB,  
Pluit  
Jakarta 14450  
T. +62 21 661 7768  
F. +62 21 661 9884

### Bandung

Jl.Cisangkuy No.58  
Bandung 40115  
T. +62 22 721 8200  
F. +62 22 721 9255

### Surabaya - Gubeng

Jl. Bangka No. 22  
Surabaya 60281  
T. +62 31 501 1128  
F. +62 31 503 3196

### Makassar

Jl. Boto Lempangan No. 34 J  
Makassar- Sulawesi Selatan  
T. +62 411 3632388  
F. +62 411 3614634

### Jakarta - Sudirman

Menara Batavia Ground Floor  
Jl.KH.Mas Mansyur Kav 126  
Jakarta 10220  
T. +62 21 57905455  
F. +62 21 57950728

### Tasikmalaya

Ruko Tasik Indah Plaza No.21  
Jl. KHZ Mustofa No. 345  
Tasikmalaya 46121  
T. +62 265 345000  
F. +62 265 345003

### Surabaya - Diponegoro

Jl. Diponegoro No.26D  
Surabaya 60261  
T. +62 31 567 0388  
F. +62 31 561 0528

### Medan

Jl. Teuku Amir Hamzah No.40-O  
Medan 20117  
T. +62 61 6638592  
F. +62 61 6638023

### Jakarta - Kebon Jeruk

Plaza Kebon Jeruk  
Jl.Raya Perjuangan Blok A/2  
Jakarta 11530  
T. +62 21 532 4074  
F. +62 21 536 2157

### Malang

Jl. Guntur No. 19  
Malang 65112  
T. +62 341 347 611  
F. +62 341 347 615

### Bali - Denpasar

Dewata Square Blok A3  
Jl. Letda Tantular Renon  
Denpasar 802361  
T. +62 361 225099  
F. +62 361 245099

### Tangerang

Jl. Pahlawan Seribu Ruko BSD  
Sektor 7 Blok RK kav. 9  
Tangerang 15310  
T. +62 21 5387495  
F. +62 21 5387494

### Pekanbaru

Jl. Jendral Sudirman No.73  
Pekanbaru-Riau  
T. +62 761 848414  
F. +62 761 849456

### Pontianak

Jl. MT Haryono No. 6  
Pontianak 78121  
T. +62 561 575674  
F. +62 561 575670

### Jakarta - Centro

Ruko Centro Residence Kav. 4-5  
Tower C Lt. 1 No. 26-29  
Jl. Macan, Daan Mogot  
Jakarta 14450  
T. +62 21 56945227  
F. +62 21 56945226

### Solo

Jl. Slamet Riyadi 330<sup>a</sup>  
Solo 57145  
T. +62 271 736599  
F. +62 271 733478

### Balikpapan

Ruko Bukit Damai Indah  
Blok I, No. 3, Rt.34  
Jl. MT. Haryono, Gunung  
Bahagia, Balikpapan Selatan  
76114  
T. +62 542 746313  
F. +62 542 746317

## IDX CORNER & INVESTMENT GALLERY

### President University

Resto Plaza 1F - Jababeka  
Education Park  
Jl. Ki Hajar Dewantara Raya  
Cikarang - Bekasi 17550  
T. +62 21 89106030

### Universitas Siliwangi Tasikmalaya

Jl. Siliwangi No. 24  
Tasikmalaya 46151  
T. +62 265 323685  
F. +62 265 323534

### Politeknik Kediri

Jl. Mayor Bismo No. 27  
Kediri 64121  
T. +62 354 683128  
F. +62 354 683128

### Universitas Muhammadiyah Sidoarjo

Jl. Majapahit 666 B  
Sidoarjo, Jawa Timur  
T. +62 31 8945444  
F. +62 31 8949333

### Universitas Tanjungpura Pontianak

Jl. Jendral Ahmad Yani  
Pontianak 78124  
T. +62 561 743465  
F. +62 561 766840

### Universitas Pesantren Tinggi Darul Ulum

Kompleks Pp Darul Ulu,  
Peterongan  
Jombang, Jawa Timur 60281  
T. +62 321 873655  
F. +62 321 875771

### STIE "AUB" Surakarta

Jl. Mr. Sartono 97, Cengklik  
Nusukan, Surakarta 57135  
T. +62 271 854803  
F. +62 271 853084

### Universitas Surabaya

Jl. Raya Kalirungkut  
Surabaya 60293  
T. +62 31 298 1203  
F. +62 31 298 1204

### Universitas Muhammadiyah Gresik

Jl. Sumatra 101 GKB  
Gresik 61121  
T. +62 31 395 1414  
F. +62 31 395 2585

### Universitas Negeri Malang

Jl. Surabaya No. 6  
Malang 65145  
T. +62 341 585914  
F. +62 341 55288

### Universitas Muhammadiyah Malang

Jl. Raya Tlogomas 246  
Malang 65144  
T. +62 341 464318-9  
F. +62 341 460782

### FSEI IAIN Antasari

Jl. Ahmad Yani Km. 4,5  
Banjarmasin  
T. + 62 511 3265783

### STIE Malangkececwara

Jl. Terusan Candi Kalasan  
Malang 65142  
T. +62 341 491813  
F. +62 341 495619

### STIESIA Surabaya

Jl. Menur Pumpungan 30  
Surabaya  
T. +62 31 5947505  
F. +62 31 5932218

### Universitas 17 Agustus 1945 Banyuwangi

Jl. Adi Sucipto 26  
Banyuwangi, Jawa Timur  
T. +62 333 419613  
F. +62 333 419163

### STIE Tri Bhakti

Jl. Teuku Umar No. 24  
Cut Meutia Setiakawan,  
Bekasi  
T. +62 21 82429400,  
82429500  
F. +62 271 726156

### Universitas Islam Kalimantan

Jl. Adiyaksa No. 2, Kayu  
Tangi, Banjarmasin  
T. + 62 511 3303871  
F. + 62 511 3303871

### STIKOM Bali

Jalan Puputan No. 86, Renon,  
Denpasar  
T. +62361 244445  
F. +62361 264773

### Universitas Muhammadiyah Pontianak

Fakultas Ekonomi UM  
Pontianak  
Jl. Ahmad Yani, No. 111,  
Pontianak 78124  
T. +62561 743465  
F. +62561 766840

### Universitas Negeri Makassar

Fakultas Ekonomi Gedung BT  
Lt.2  
Jl. A.P. Pettarani, Kampus  
UNM, Gunungsari Baru  
Makassar 90222  
T. +62 411 889464 / 881244  
F. +62 411 887604

### STIE AAS Surakarta

Jl. Slamet Riyadi No. 361,  
Kartasura, Surakarta  
T. +62 271 726156  
F. +62 271 726156

### UPN "Veteran" Yogyakarta

Jl. Babarsari 2, Tambak Bayan  
Yogyakarta  
T. +62 274 485268  
F. +62 274 487147

### Disclaimer:

Information, opinions and recommendations contained in this document are presented by PT Reliance Securities Tbk. from sources that are considered reliable and dependable. This document is not an offer, invitation or any kind of representations to decide to buy or sell stock. Investment decisions taken based on this document is not the responsibility of PT Reliance Securities Tbk. PT Reliance Securities Tbk. reserves the right to change the contents of this document at any time without prior notice.