

## IHSG



5616.55  
-27.61  
-0.49%

Vol (Mn): 5944  
Val (Bn): 3318

## LQ45



926.281  
-7.277  
-0.78%

Sector Indices	Last	Change	Change %
Agriculture	1850.65	(13.93)	(0.75)
Basic Industry	607.08	(2.26)	(0.37)
Consumer	2430.34	(8.15)	(0.34)
Finance	877.41	(5.67)	(0.65)
Infrastructure	1102.55	(7.55)	(0.68)
Manufacture	1455.22	(6.27)	(0.43)
Mining	1546.88	8.37	0.54
Misc Industry	1445.92	(11.60)	(0.80)
Property	506.25	0.50	0.10
Trade	916.99	(8.27)	(0.90)

Source: relitrade next G

Most Active	Last	Change %	Freq
INDX	136	2.3	11,876
BAPA	120	(11.1)	9,941
MAMI	76	(3.8)	6,941
RIMO	141	(2.1)	6,496
BSDE	1,765	(0.8)	6,257

Most Volume	Last	Change %	M share
MYRX	137	0.0	20,167
MAMI	76	(3.8)	3,766
BRMS	85	0.0	2,535
RIMO	141	(2.1)	1,843
BWPT	370	(1.1)	1,667

Most Value	Last	Change %	Rp Bil
BBNI	6,275	(1.6)	340.66
MYRX	137	0.0	278.14
TLKM	4,090	(1.4)	194.94
ASII	8,500	(0.9)	184.77
BBCA	17,350	(1.7)	183.06

Source: relitrade next G

## IHSG Technical Review



R3	6030
R2	5860
R1	5700
Last	5616.55
S1	5540
S2	5400
S3	5280

### Comment:

Bearish butterfly harmonic pattern formations. Reversal signal. Huge trading volume.

Stochastic, dead-cross at overbought oscillator.

RSI bearish reversal momentum at overbought oscillator.

Long term bullish trend movement.

Stop-loss level if confirmations the harmonic pattern with broke the MA7 at 5588. Downside potential until 5487.

## PTPP



R3	4000
R2	3770
R1	3600
Last	3470
S1	3440
S2	3260
S3	3150

**PARTIAL SELL**

### Comment:

Reached the bearish trend resistance level. Huge trading volume. Distributions potential.

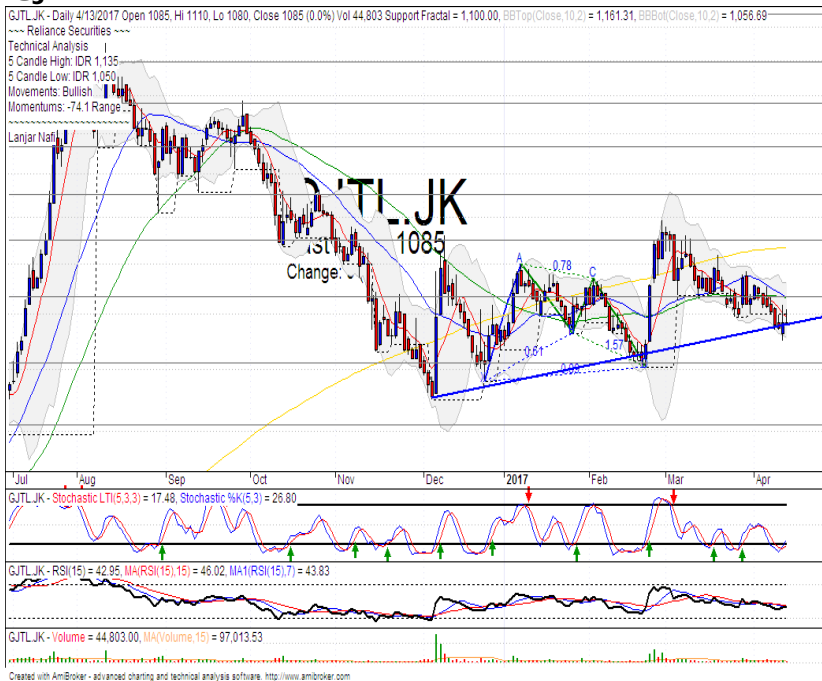
Stochastic, Bullish momentum at near overbought oscillator.

RSI bullish momentum at middle area.

Long term bearish trend movement.

Stop-loss level if pulled back the bearish trend line resistance level at 3400. Downside potential until lower Bollinger bands at 3000.

## GJTL



R3	1350
R2	1250
R1	1135
Last	1085
S1	1015
S2	905
S3	795

**SPECULATIVE BUY**

### Comment:

Rebounded at bullish trend support level with bullish harami formations.

Stochastic golden-cross at oversold oscillator.

RSI bullish reversal momentum at middle oscillator.

Medium term bullish trend movement.

Upside target to MA200 resistance level at 1235. Stop-loss level at 1050 if broke the bullish trend support level.

## BMRI



R3	12675
R2	12200
R1	11800
Last	11650
S1	11450
S2	11100
S3	10750

**TRADING BUY**

### Comment:

Touching the MA50 and bullish trend support level. Rebound indications.

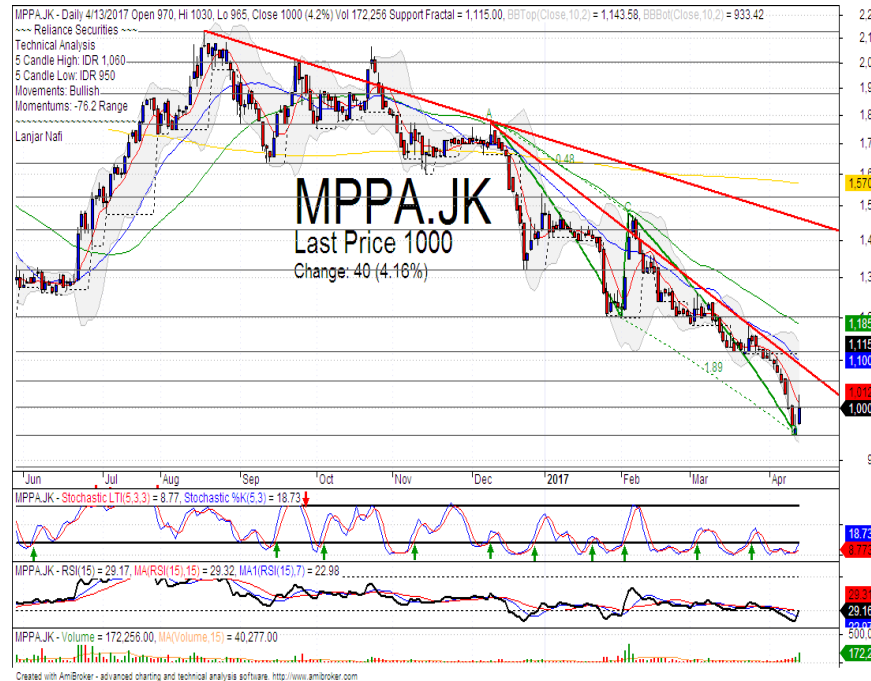
Stochastic golden-cross oscillators at oversold potential. Broad upside potential.

RSI bearish consolidations momentum at middle oscillator.

Long term bullish trend movement.

Upside target until upper Bollinger bands resistance level at 12400. Stop-loss level if broke the bullish trend support level at 11400.

## MPPA



R3	1120
R2	1055
R1	1000
Last	1000
S1	950
S2	890
S3	840

**SPECULATIVE BUY**

### Comment:

Inverted hammer candlestick pattern confirmations. Abandoned baby formations candle. Reversal signal.

Stochastic golden-cross at oversold oscillator. broad upside potential.

RSI reversal momentum at oversold oscillator.

Long and Medium term bearish trend movement.

Upside target to channeling bearish trend resistance level at 1055 until 1100. Stop-loss level if false confirmations the reversal pattern at 970.

Stocks	S2	S1	Closing Price	R1	R2	Technical Notes	Rec	Stop Loss	Rec Buy Prc	Target Price
<b>Plantation</b>										
AALI	13,000	14,000	14,575	14,900	15,850	Stoch golden-cross	TB	14,000		15,000
LSIP	1,250	1,300	1,395	1,405	1,545	Consolidations	TB	1,350		1,465
<b>Mining</b>										
INCO	1,965	2,120	2,230	2,300	2,500	Oversold	W	2,200		
<b>Consumer</b>										
UNVR	42,500	44,000	45,325	46,000	47,800	Consolidations	PS	45,000		
INDF	7,250	7,900	7,975	8,500	9,125	Oversold	W	7,800		
KLBF	1,485	1,540	1,580	1,600	1,650	Consolidations	H	1,550		1,600
<b>Trading</b>										
ACES	810	870	900	920	970	Bearish momentum	PS	900		
AKRA	6,100	6,350	6,550	6,600	7,000	Bullish momentum	H	6,300		6,700
UNTR	25,325	26,750	28,150	28,175	29,750	Bearish momentum	PS	26,700		
<b>Property &amp; Construction</b>										
LPCK	3,850	4,000	4,130	4,160	4,300	Stoch golden-cross	TB	4,040		4,300
WIKA	1,990	2,200	2,380	2,400	2,600	Bullish Consolidations	H	2,200		2,450
BSDE	1,630	1,720	1,765	1,830	1,935	Oversold	W	1,720		
WSKT	2,120	2,260	2,370	2,410	2,600	Bullish Consolidations	H	2,250		2,410
ADHI	2,200	2,300	2,330	2,420	2,530	Bullish Consolidations	H	2,280		2,450
<b>Basic Industry &amp; Chemical</b>										
SMGR	8,150	8,725	8,875	9,350	9,900	Consolidations	TB	8,700		9,350
CPIN	3,000	3,210	3,220	3,400	3,580	Stoch golden-cross	TB	3,200		3,480
MAIN	1,080	1,180	1,260	1,300	1,400	Oversold	TB	1,200		1,300
INTP	15,500	16,350	16,500	17,500	18,400	Oversold	W	16,350		
<b>Miscellaneous</b>										
SRIL	270	288	300	316	350	Oversold	W	284		
ASII	7,900	8,250	8,500	8,650	9,000	Stoch golden-cross	TB	8,200		8,800
<b>Finance</b>										
BBTN	2,100	2,200	2,280	2,360	2,480	Bearish momentum	S	2,180		
BMRI	11,100	11,450	11,650	11,800	12,200	Consolidations	TB	11,450		11,800
BTPN	2,340	2,550	2,620	2,770	3,000	Bullish momentum	B	2,540	2,580	2,770
BJBR	1,750	1,915	2,140	2,140	2,210	Consolidations	TB	2,000		2,420
BBRI	11,750	12,350	12,700	13,000	13,500	Bearish momentum	S	12,700		
<b>Infrastructure</b>										
TLKM	3,710	3,950	4,090	4,200	4,400	Oversold	TB	4,100		4,300
PGAS	2,200	2,360	2,530	2,550	2,800	Bullish Consolidations	SB	2,350		2,730

Source : Reliance Securities

### Analyst Conclusions:

The index reached the all time high level. Be care full from distributions phase.

Legend :

- B: BUY (allocate till 100% of the weighted capital to accumulate, higher than 50% upside probability)
- SB: SPECULATIVE BUY (allocate 25%-50% of the weighted capital to accumulate, 25%-50% upside probability)
- W: WAIT (wait for proper entry level, do the stop-loss if necessary)
- H: HOLD (hold the portfolio position, aim for the best price to distribute)
- PS: PARTIAL SELL (distribute 25%-50% part of the portfolio, 25%-50% downside probability)
- S: SELL (distribute till 100% of the portfolio, higher than 50% downside probability)
- TB: TRADING BUY (short term or intraday trading within a tight trading range. Highly speculative).

Ticker	Resistance	Price	Support	Weekly	Weekly	Indicator			Moving Average			
	Fractal	4/13/2017	Fractal	High	Low	Stochastic	RSI	B. Band	25 Days	50 Days	200 Days	
AALI.JK	15,200	14,575	14,400	14,800	14,725	Neutral	Bullish	Neutral	Middle Bands	Under	Under	Under
ACES.JK	950	900	815	950	905	Neutral	Bearish	Neutral	Middle Bands	Upper	Upper	Upper
ADHI.JK	2,420	2,330	2,150	2,420	2,210	Neutral	Bullish	Neutral	Middle Bands	Upper	Upper	Under
ADRO.JK	1,845	1,860	1,850	1,920	1,890	Neutral	Bearish	Neutral	Middle Bands	Upper	Upper	Upper
AISA.JK	2,250	2,360	2,150	2,470	2,220	Neutral	Bullish	Neutral	Upper Bands	Upper	Upper	Upper
AKRA.JK	6,750	6,550	6,125	6,625	6,350	Neutral	Bullish	Neutral	Middle Bands	Upper	Upper	Upper
ANTM.JK	750	735	700	745	715	Neutral	Bullish	Neutral	Middle Bands	Upper	Under	Under
APLN.JK	240	222	210	226	214	Neutral	Bullish	Neutral	Middle Bands	Upper	Under	Under
ASII.JK	8,925	8,500	8,500	8,750	8,600	Oversold	Bearish	Neutral	Middle Bands	Under	Upper	Upper
ASRI.JK	370	354	346	366	352	Neutral	Bullish	Neutral	Middle Bands	Under	Under	Under
BBKA.JK	17,750	17,350	16,550	17,750	17,475	Neutral	Bearish	Overbought	Middle Bands	Upper	Upper	Upper
BBKP.JK	630	645	625	670	650	Neutral	Bearish	Neutral	Middle Bands	Upper	Upper	Upper
BBNI.JK	6,700	6,275	6,350	6,625	6,425	Oversold	Bearish	Neutral	Middle Bands	Under	Under	Upper
BBRI.JK	13,250	12,700	12,800	13,250	12,950	Neutral	Bearish	Neutral	Lower Bands	Under	Upper	Upper
BBTN.JK	2,390	2,280	2,250	2,390	2,340	Neutral	Bearish	Neutral	Middle Bands	Upper	Upper	Upper
BDMN.JK	5,000	4,770	4,650	4,900	4,770	Neutral	Bullish	Neutral	Middle Bands	Under	Upper	Upper
BHIT.JK	131	124	126	129	125	Oversold	Bearish	Neutral	Middle Bands	Under	Under	Under
BJBR.JK	2,470	2,140	1,960	2,470	2,130	Neutral	Bearish	Neutral	Middle Bands	Under	Under	Upper
BJTM.JK	840	675	615	740	700	Oversold	Bullish	Neutral	Middle Bands	Upper	Upper	Upper
BKSL.JK	100	91	90	95	92	Oversold	Bullish	Neutral	Middle Bands	Under	Under	Under
BMRI.JK	11,450	11,650	11,600	12,425	11,800	Neutral	Bearish	Neutral	Middle Bands	Under	Upper	Upper
BMTR.JK	535	535	515	565	545	Neutral	Bearish	Neutral	Middle Bands	Upper	Under	Under
BSDE.JK	1,900	1,765	1,820	1,840	1,790	Oversold	Bearish	Neutral	Lower Bands	Under	Under	Under
BTPN.JK	2,780	2,620	2,540	2,620	2,580	Neutral	Bullish	Neutral	Middle Bands	Under	Under	Under
BWPT.JK	344	370	332	384	346	Neutral	Bullish	Neutral	Middle Bands	Upper	Upper	Upper
CMNP.JK	1,490	1,445	1,430	1,450	1,450	Neutral	Bullish	Neutral	Middle Bands	Under	Under	Under
CPIN.JK	3,400	3,220	3,180	3,300	3,230	Neutral	Bearish	Neutral	Middle Bands	Under	Under	Under
CSAP.JK	464	456	454	464	458	Neutral	Bearish	Neutral	Middle Bands	Under	Under	Under
CTRA.JK	1,295	1,245	1,080	1,265	1,125	Neutral	Bullish	Neutral	Middle Bands	Upper	Under	Under
DILD.JK	422	432	398	450	414	Neutral	Bearish	Neutral	Upper Bands	Upper	Under	Under
EXCL.JK	3,310	3,030	2,900	3,080	2,970	Neutral	Bullish	Neutral	Middle Bands	Under	Under	Upper
GGRM.JK	68,575	64,675	65,025	68,250	65,225	Oversold	Bearish	Neutral	Middle Bands	Under	Upper	Under
GIAA.JK	404	380	340	390	366	Neutral	Bullish	Neutral	Middle Bands	Upper	Upper	Under
GJTL.JK	1,185	1,085	1,100	1,135	1,100	Oversold	Bullish	Neutral	Middle Bands	Under	Under	Under
HEXA.JK	3,980	4,400	4,100	4,440	4,120	Overbought	Bearish	Overbought	Middle Bands	Upper	Upper	Upper
HRUM.JK	2,880	2,670	2,400	2,880	2,720	Neutral	Bearish	Neutral	Middle Bands	Upper	Upper	Upper
ICBP.JK	8,950	8,125	8,150	8,250	8,125	Oversold	Bullish	Neutral	Middle Bands	Under	Under	Under
IMAS.JK	1,250	1,150	1,150	1,240	1,155	Oversold	Bearish	Neutral	Middle Bands	Under	Under	Under
INCO.JK	2,370	2,230	2,270	2,310	2,280	Oversold	Bullish	Neutral	Lower Bands	Under	Under	Under
INDF.JK	8,300	7,975	7,925	8,075	8,000	Neutral	Bullish	Neutral	Middle Bands	Under	Under	Under
INDY.JK	805	700	725	750	715	Oversold	Bullish	Neutral	Middle Bands	Under	Under	Under
INTA.JK	406	468	378	482	460	Overbought	Bearish	Overbought	Middle Bands	Upper	Upper	Upper
INTP.JK	17,200	16,500	15,300	17,000	16,675	Oversold	Bearish	Neutral	Middle Bands	Upper	Upper	Upper
ITMG.JK	22,300	19,800	16,150	20,950	19,875	Oversold	Bullish	Neutral	Middle Bands	Upper	Upper	Upper
JFJA.JK	1,665	1,560	1,590	1,665	1,595	Neutral	Bearish	Neutral	Middle Bands	Under	Under	Under
JSMR.JK	4,650	4,640	4,620	4,740	4,670	Neutral	Bearish	Neutral	Middle Bands	Upper	Upper	Under
KUJA.JK	322	328	324	330	328	Neutral	Bullish	Neutral	Middle Bands	Upper	Upper	Upper
KLBF.JK	1,620	1,580	1,545	1,600	1,570	Neutral	Bullish	Neutral	Middle Bands	Upper	Upper	Under
KRAS.JK	690	615	585	640	595	Oversold	Bullish	Neutral	Middle Bands	Under	Under	Under
LPCK.JK	4,430	4,130	4,060	4,200	4,130	Oversold	Bullish	Neutral	Middle Bands	Under	Under	Under
LPKR.JK	740	755	720	780	730	Neutral	Bullish	Neutral	Middle Bands	Upper	Upper	Under
LPPF.JK	13,550	13,450	13,125	13,875	13,275	Neutral	Bearish	Neutral	Middle Bands	Under	Under	Under
LSIP.JK	1,505	1,395	1,370	1,460	1,415	Oversold	Bullish	Neutral	Middle Bands	Under	Under	Under
MAIN.JK	1,410	1,260	1,210	1,335	1,275	Oversold	Bearish	Neutral	Middle Bands	Upper	Upper	Under
MAPI.JK	6,550	6,225	5,675	6,550	6,300	Neutral	Bearish	Neutral	Middle Bands	Upper	Upper	Upper
MASA.JK	270	242	244	254	246	Neutral	Bearish	Neutral	Lower Bands	Under	Upper	Upper
MNCN.JK	1,910	1,815	1,730	1,910	1,880	Overbought	Bearish	Neutral	Middle Bands	Upper	Upper	Under
MPPA.JK	1,180	1,000	1,115	1,060	990	Oversold	Bullish	Oversold	Middle Bands	Under	Under	Under
MTLA.JK	340	322	320	322	322	Neutral	Bullish	Neutral	Middle Bands	Under	Upper	Upper
MYOR.JK	2,100	1,970	2,060	2,100	2,080	Neutral	Bearish	Neutral	Lower Bands	Under	Under	Upper
PGAS.JK	2,580	2,530	2,410	2,560	2,480	Neutral	Bullish	Neutral	Middle Bands	Under	Under	Under
PTBA.JK	14,200	12,500	12,725	13,275	12,575	Oversold	Bullish	Neutral	Middle Bands	Upper	Upper	Upper
RALS.JK	1,185	1,155	1,145	1,190	1,160	Neutral	Bearish	Neutral	Middle Bands	Upper	Under	Under
ROTI.JK	1,655	1,615	1,445	1,655	1,600	Neutral	Bearish	Neutral	Middle Bands	Upper	Upper	Upper
SCMA.JK	2,910	2,750	2,780	2,910	2,890	Neutral	Bearish	Neutral	Middle Bands	Under	Under	Under
SGRO.JK	2,070	2,020	1,990	2,070	2,040	Neutral	Bearish	Neutral	Middle Bands	Under	Under	Upper
SIMP.JK	690	635	630	670	650	Neutral	Bearish	Neutral	Middle Bands	Upper	Upper	Upper
SMCB.JK	940	900	895	910	905	Neutral	Bullish	Neutral	Middle Bands	Under	Under	Under
SMGR.JK	9,675	8,875	8,775	9,200	8,950	Neutral	Bearish	Neutral	Middle Bands	Under	Under	Under
SMRA.JK	1,380	1,345	1,295	1,395	1,330	Neutral	Bullish	Neutral	Middle Bands	Under	Under	Under
SRIL.JK	392	300	298	316	306	Oversold	Bearish	Neutral	Middle Bands	Under	Under	Upper
SSIA.JK	690	770	725	800	750	Neutral	Bearish	Overbought	Middle Bands	Upper	Upper	Upper
SSMS.JK	1,510	1,715	1,630	1,725	1,695	Neutral	Bullish	Neutral	Middle Bands	Upper	Upper	Upper
TLKM.JK	4,180	4,090	4,090	4,180	4,140	Neutral	Bullish	Neutral	Middle Bands	Under	Upper	Upper
TOTL.JK	815	815	770	820	795	Neutral	Bullish	Neutral	Middle Bands	Upper	Upper	Upper
UNTR.JK	29,450	28,150	26,500	29,200	28,775	Neutral	Bullish	Neutral	Middle Bands	Upper	Upper	Upper
UNVR.JK	44,000	45,325	44,900	45,500	45,325	Overbought	Bearish	Neutral	Middle Bands	Upper	Upper	Upper

Source : Reliance Research

### Legend :

- Movement: Bullish and Bearish (Indicator Stochastic)
- Momentum: Oversold, Overbought and Neutral (Indicator RSI)
- Resistance Fractal: Strong Resistance
- Support Fractal: Strong Support
- Green: Good Conditions
- Red: Poor Conditions

## HEAD OFFICE

### Reliance Building

Jl. Pluit Sakti Raya No. 27AB,  
Pluit  
Jakarta 14450  
T. +62 21 661 7768  
F. +62 21 661 9884

## RESEARCH DIVISION

### Robertus Yanuar Hardy

*robertus@reliance-securities.com*

### Rio Adrianus

*rio.adrianus@reliance-securities.com*

### Lanjar Nafi Taulat I

*lanjar@reliance-securities.com*

### Aji Setiawan

*aji@reliance-securities.com*

### Shanti Dwi Jayanti

*santi@reliance-securities.com*

Senior Analyst

Research Analyst

Technical Research Analyst

Associate Research Analyst

Associate Research Analyst

## EQUITY DIVISION

### Jakarta- Pluit

Jl. Pluit Sakti Raya No. 27AB,  
Pluit  
Jakarta 14450  
T. +62 21 661 7768  
F. +62 21 661 9884

### Bandung

Jl.Cisangkuy No.58  
Bandung 40115  
T. +62 22 721 8200  
F. +62 22 721 9255

### Surabaya - Gubeng

Jl. Bangka No. 22  
Surabaya 60281  
T. +62 31 501 1128  
F. +62 31 503 3196

### Makassar

Jl. Boto Lempangan No. 34 J  
Makassar- Sulawesi Selatan  
T. +62 411 3632388  
F. +62 411 3614634

### Jakarta - Sudirman

Menara Batavia Ground Floor  
Jl.KH.Mas Mansyur Kav 126  
Jakarta 10220  
T. +62 21 57905455  
F. +62 21 57950728

### Tasikmalaya

Ruko Tasik Indah Plaza No.21  
Jl. KHZ Mustofa No. 345  
Tasikmalaya 46121  
T. +62 265 345000  
F. +62 265 345003

### Surabaya - Diponegoro

Jl. Diponegoro No.26D  
Surabaya 60261  
T. +62 31 567 0388  
F. +62 31 561 0528

### Medan

Jl. Teuku Amir Hamzah No.40-O  
Medan 20117  
T. +62 61 6638592  
F. +62 61 6638023

### Jakarta - Kebon Jeruk

Plaza Kebon Jeruk  
Jl.Raya Perjuangan Blok A/2  
Jakarta 11530  
T. +62 21 532 4074  
F. +62 21 536 2157

### Malang

Jl. Guntur No. 19  
Malang 65112  
T. +62 341 347 611  
F. +62 341 347 615

### Bali - Denpasar

Dewata Square Blok A3  
Jl. Letda Tantular Renon  
Denpasar 802361  
T. +62 361 225099  
F. +62 361 245099

### Tangerang

Jl. Pahlawan Seribu Ruko BSD  
Sektor 7 Blok RK kav. 9  
Tangerang 15310  
T. +62 21 5387495  
F. +62 21 5387494

### Pekanbaru

Jl. Jendral Sudirman No.73  
Pekanbaru-Riau  
T. +62 761 848414  
F. +62 761 849456

### Pontianak

Jl. MT Haryono No. 6  
Pontianak 78121  
T. +62 561 575674  
F. +62 561 575670

### Jakarta - Centro

Ruko Centro Residence Kav. 4-5  
Tower C Lt. 1 No. 26-29  
Jl. Macan, Daan Mogot  
Jakarta 14450  
T. +62 21 56945227  
F. +62 21 56945226

### Solo

Jl. Slamet Riyadi 330<sup>a</sup>  
Solo 57145  
T. +62 271 736599  
F. +62 271 733478

### Balikpapan

Ruko Bukit Damai Indah  
Blok I, No. 3, Rt.34  
Jl. MT. Haryono, Gunung  
Bahagia, Balikpapan Selatan  
76114  
T. +62 542 746313  
F. +62 542 746317

## IDX CORNER & INVESTMENT GALLERY

### President University

Resto Plaza 1F - Jababeka  
Education Park  
Jl. Ki Hajar Dewantara Raya  
Cikarang - Bekasi 17550  
T. +62 21 89106030

### Universitas Siliwangi Tasikmalaya

Jl. Siliwangi No. 24  
Tasikmalaya 46151  
T. +62 265 323685  
F. +62 265 323534

### Politeknik Kediri

Jl. Mayor Bismo No. 27  
Kediri 64121  
T. +62 354 683128  
F. +62 354 683128

### Universitas Muhammadiyah Sidoarjo

Jl. Majapahit 666 B  
Sidoarjo, Jawa Timur  
T. +62 31 8945444  
F. +62 31 8949333

### Universitas Tanjungpura Pontianak

Jl. Jendral Ahmad Yani  
Pontianak 78124  
T. +62 561 743465  
F. +62 561 766840

### Universitas Pesantren Tinggi Darul Ulum

Kompleks Pp Darul Ulu,  
Peterongan  
Jombang, Jawa Timur 60281  
T. +62 321 873655  
F. +62 321 875771

### STIE "AUB" Surakarta

Jl. Mr. Sartono 97, Cengklik  
Nusukan, Surakarta 57135  
T. +62 271 854803  
F. +62 271 853084

### Universitas Surabaya

Jl. Raya Kalirungkut  
Surabaya 60293  
T. +62 31 298 1203  
F. +62 31 298 1204

### Universitas Muhammadiyah Gresik

Jl. Sumatra 101 GKB  
Gresik 61121  
T. +62 31 395 1414  
F. +62 31 395 2585

### Universitas Negeri Malang

Jl. Surabaya No. 6  
Malang 65145  
T. +62 341 585914  
F. +62 341 55288

### Universitas Muhammadiyah Malang

Jl. Raya Tlogomas 246  
Malang 65144  
T. +62 341 464318-9  
F. +62 341 460782

### FSEI IAIN Antasari

Jl. Ahmad Yani Km. 4,5  
Banjarmasin  
T. + 62 511 3265783

### STIE Malangkececwara

Jl. Terusan Candi Kalasan  
Malang 65142  
T. +62 341 491813  
F. +62 341 495619

### STIESIA Surabaya

Jl. Menur Pumpungan 30  
Surabaya  
T. +62 31 5947505  
F. +62 31 5932218

### Universitas 17 Agustus 1945 Banyuwangi

Jl. Adi Sucipto 26  
Banyuwangi, Jawa Timur  
T. +62 333 419613  
F. +62 333 419163

### STIE Tri Bhakti

Jl. Teuku Umar No. 24  
Cut Meutia Setiakawan,  
Bekasi  
T. +62 21 82429400,  
82429500  
F. +62 271 726156

### Universitas Islam Kalimantan

Jl. Adiyaksa No. 2, Kayu  
Tangi, Banjarmasin  
T. + 62 511 3303871  
F. + 62 511 3303871

### STIKOM Bali

Jalan Puputan No. 86, Renon,  
Denpasar  
T. +62361 244445  
F. +62361 264773

### Universitas Muhammadiyah Pontianak

Fakultas Ekonomi UM  
Pontianak  
Jl. Ahmad Yani, No. 111,  
Pontianak 78124  
T. +62561 743465  
F. +62561 766840

### Universitas Negeri Makassar

Fakultas Ekonomi Gedung BT  
Lt.2  
Jl. A.P. Pettarani, Kampus  
UNM, Gunungsari Baru  
Makassar 90222  
T. +62 411 889464 / 881244  
F. +62 411 887604

### STIE AAS Surakarta

Jl. Slamet Riyadi No. 361,  
Kartasura, Surakarta  
T. +62 271 726156  
F. +62 271 726156

### UPN "Veteran" Yogyakarta

Jl. Babarsari 2, Tambak Bayan  
Yogyakarta  
T. +62 274 485268  
F. +62 274 487147

### Disclaimer:

Information, opinions and recommendations contained in this document are presented by PT Reliance Securities Tbk. from sources that are considered reliable and dependable. This document is not an offer, invitation or any kind of representations to decide to buy or sell stock. Investment decisions taken based on this document is not the responsibility of PT Reliance Securities Tbk. PT Reliance Securities Tbk. reserves the right to change the contents of this document at any time without prior notice.