

IHSG



5577.49
-39.058
-0.70%

LQ45



916.852
-9.429
-1.02%

Vol (Mn): 12088
Val (Bn): 7433

Sector Indices	Last	Change	Change %
Agriculture	1852.13	1.48	0.08
Basic Industry	606.54	(0.54)	(0.09)
Consumer	2434.05	3.71	0.15
Finance	866.16	(11.25)	(1.30)
Infrastructure	1086.60	(15.95)	(1.47)
Manufacture	1452.93	(2.30)	(0.16)
Mining	1547.53	0.65	0.04
Misc Industry	1428.02	(17.91)	(1.25)
Property	502.19	(4.06)	(0.81)
Trade	910.89	(6.11)	(0.67)

Source: relitrade next G

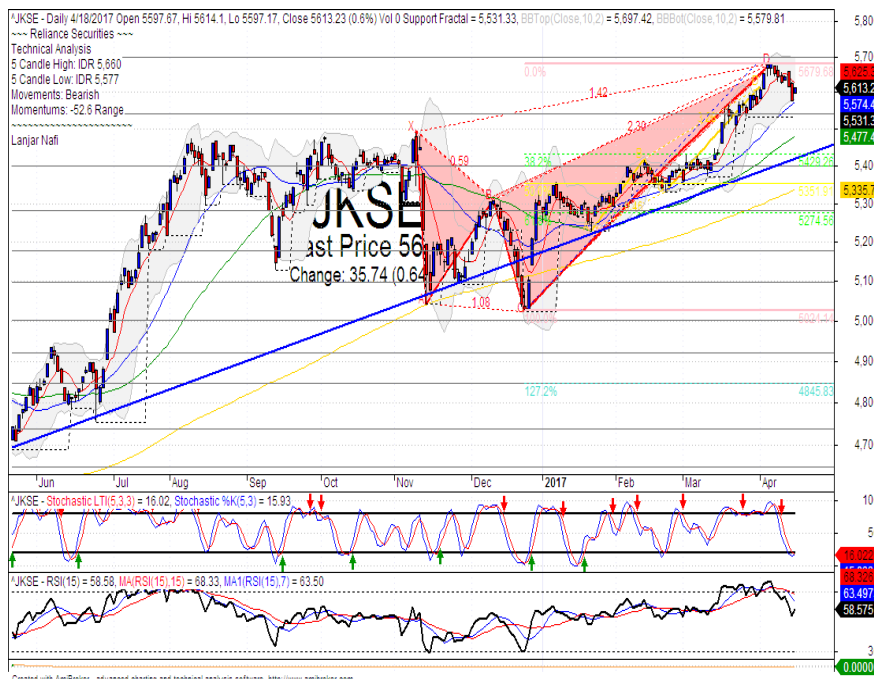
Most Active	Last	Change %	Freq
BUMI	386	(0.5)	13,288
BAPA	134	11.7	10,667
MDRN	64	1.6	8,505
STAR	102	30.8	7,988
MNCN	1,740	(4.1)	4,471

Most Volume	Last	Change %	M share
MYRX	137	0.0	21,038
BUMI	386	(0.5)	7,069
BRMS	82	(3.5)	3,807
STRA	102	30.8	2,836
MAMI	78	2.6	1,627

Most Value	Last	Change %	Rp Bil
BBCAI	16,925	(2.4)	317.61
MYRX	137	0.0	288.13
BUMI	386	(0.5)	284.56
TLKM	4,010	(2.0)	207.83
ASII	8,375	(1.5)	123.20

Source: relitrade next G

IHSG Technical Review



R3	6030
R2	5860
R1	5700
Last	5577.49
S1	5540
S2	5400
S3	5280

Comment:

Bearish butterfly harmonic pattern formations. Reversal signal. Huge trading volume.

Stochastic, dead-cross at overbought oscillator.

RSI bearish reversal momentum at overbought oscillator.

Long term bullish trend movement.

Stop-loss level if confirmations the harmonic pattern with broke the MA7 at 5588. Downside potential until 5487.

PTPP



R3	3770
R2	3600
R1	3440
Last	3360
S1	3260
S2	3150
S3	3000

SELL

Comment:
 Pulled back the bearish trend resistance level confirmations. Distributions signal.

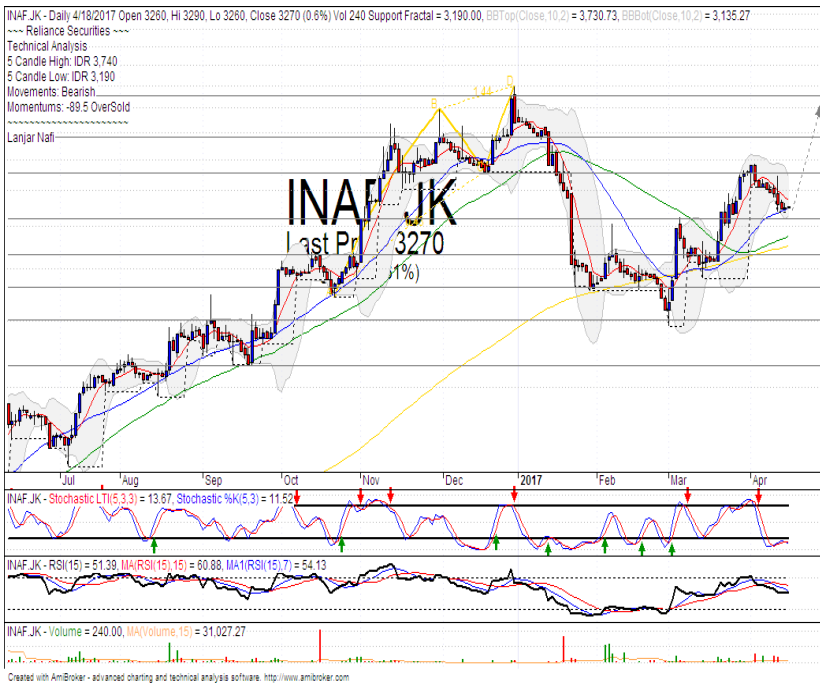
Stochastic, dead-cross at overbought oscillator.

RSI bearish consolidations momentum at middle area.

Long term bearish trend movement.

Stop-loss level if broke the MA25 support level at 3290. Downside potential until lower Bollinger bands at 3020.

INAF



R3	5250
R2	4440
R1	3790
Last	3270
S1	3120
S2	2670
S3	2300

TRADING BUY

Comment:
 Rebounded at MA25 support level and forming the Elliot Wave indications with Wave 5 target.

Stochastic golden-cross at oversold oscillator.

RSI bullish reversal momentum at middle oscillator.

Medium term bullish trend movement.

Upside target to ideal wave 5 target level at 5000. Stop-loss level at 3220 if broke the MA25 support level.

MAIN



R3	1500
R2	1400
R1	1300
Last	1275
S1	1200
S2	1125
S3	1065

TRADING BUY

Comment:
Rebounded at MA50 and MA25. Reversal signal. Moderate trading volume.

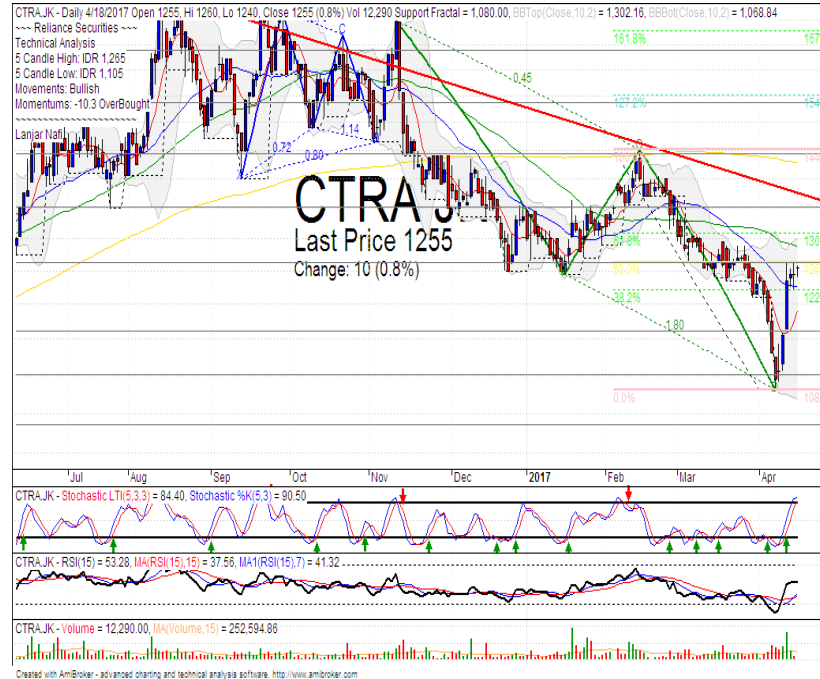
Stochastic golden-cross at oversold oscillator. Broad upside potential.

RSI consolidations momentum at middle oscillator.

Long term bullish trend movement.

Upside target until upper Bollinger bands resistance level at 1350. Stop-loss level if broke the bullish trend support level at 1230.

CTRA



R3	1450
R2	1350
R1	1265
Last	1245
S1	1160
S2	1100
S3	1035

PARTIAL SELL

Comment:
Pulled back resistance level after surged significant. Reversal signal.

Stochastic dead-cross at over oscillator. Broad downside potential.

RSI reversal momentum indications at near overbought oscillator.

Long and Medium term bearish trend movement.

Stop-loss level if pulled back confirmation at 1200. Downside potential until 1160.

Stocks	S2	S1	Closing Price	R1	R2	Technical Notes	Rec	Stop Loss	Rec Buy Prc	Target Price
Plantation										
AALI	13,000	14,000	14,575	14,900	15,850	Consolidations	TB	14,000		15,000
LSIP	1,250	1,300	1,395	1,405	1,545	Consolidations	TB	1,350		1,465
Mining										
INCO	1,965	2,120	2,230	2,300	2,500	Oversold	W	2,200		
Consumer										
UNVR	42,500	44,000	45,300	46,000	47,800	Overbought	PS	45,000		
INDF	7,250	7,900	7,975	8,500	9,125	Oversold	W	7,800		
KLBF	1,485	1,540	1,540	1,600	1,650	Bearish momentum	PS	1,500		
Trading										
ACES	810	870	900	920	970	Bearish momentum	PS	860		
AKRA	6,100	6,350	6,525	6,600	7,000	Overbought	H	6,300		6,700
UNTR	25,325	26,750	27,225	28,175	29,750	Bearish momentum	S	26,700		
Property & Construction										
LPCK	3,850	4,000	4,100	4,160	4,300	Bullish momentum	TB	4,040		4,300
WIKA	1,990	2,200	2,340	2,400	2,600	Pulled back MA25	PS	2,200		
BSDE	1,630	1,720	1,765	1,830	1,935	Oversold	W	1,720		
WSKT	2,120	2,260	2,330	2,410	2,600	Pulled back MA25	PS	2,300		
ADHI	2,070	2,200	2,260	2,300	2,420	Consolidations	W	2,220		
Basic Industry & Chemical										
SMGR	8,150	8,725	8,800	9,350	9,900	Consolidations	W	8,700		
CPIN	3,000	3,210	3,180	3,400	3,580	Oversold	TB	3,200		3,480
MAIN	1,080	1,180	1,275	1,300	1,400	Stoch golden-cross	B	1,200	1,300	1,350
INTP	15,500	16,350	16,650	17,500	18,400	Oversold	W	16,350		
Miscellaneous										
SRIL	270	288	300	316	350	Oversold	W	284		
ASII	7,900	8,250	8,375	8,650	9,000	Oversold	W	8,200		
Finance										
BBTN	2,100	2,200	2,270	2,360	2,480	Bearish momentum	S	2,180		
BMRI	11,100	11,450	11,625	11,800	12,200	Oversold	W	11,450		
BTPN	2,340	2,550	2,620	2,770	3,000	Bullish momentum	H	2,540		2,770
BJBR	1,750	1,915	2,110	2,140	2,210	Consolidations	TB	2,000		2,420
BBRI	11,750	12,350	12,425	13,000	13,500	Bearish momentum	S	12,300		
Infrastructure										
TLKM	3,710	3,950	4,010	4,200	4,400	Oversold	W	3,950		
PGAS	2,200	2,360	2,480	2,550	2,800	Pulled back bearish trend	PS	2,440		

Source : Reliance Sekuritas Indonesia

Analyst Conclusions:

The index reached the all time high level. Be care full from distributions phase.

Legend :

- B: BUY (allocate till 100% of the weighted capital to accumulate, higher than 50% upside probability)
- SB: SPECULATIVE BUY (allocate 25%-50% of the weighted capital to accumulate, 25%-50% upside probability)
- W: WAIT (wait for proper entry level, do the stop-loss if necessary)
- H: HOLD (hold the portfolio position, aim for the best price to distribute)
- PS: PARTIAL SELL (distribute 25%-50% part of the portfolio, 25%-50% downside probability)
- S: SELL (distribute till 100% of the portfolio, higher than 50% downside probability)
- TB: TRADING BUY (short term or intraday trading within a tight trading range. Highly speculative).

Ticker	Resistance	Price	Support	Weekly	Weekly	Indicator			Moving Average			
	Fractal	4/17/2017	Fractal	High	Low	Stochastic	RSI	B. Band	25 Days	50 Days	200 Days	
AALIJK	15,200	14,575	14,400	14,800	14,725	Neutral	Bullish	Neutral	Middle Bands	Under	Under	Under
ACESJK	950	900	865	950	905	Neutral	Bearish	Neutral	Middle Bands	Upper	Upper	Upper
ADHIJK	2,420	2,260	2,150	2,420	2,210	Neutral	Bullish	Neutral	Middle Bands	Under	Upper	Under
ADROJK	1,845	1,850	1,850	1,920	1,880	Neutral	Bearish	Neutral	Middle Bands	Upper	Upper	Upper
AISAJK	2,250	2,260	2,150	2,470	2,230	Neutral	Bearish	Neutral	Middle Bands	Upper	Upper	Upper
AKRAJK	6,750	6,525	6,125	6,625	6,375	Overbought	Bullish	Neutral	Middle Bands	Upper	Upper	Upper
ANTMJK	750	720	700	745	715	Neutral	Bullish	Neutral	Middle Bands	Under	Under	Under
APLNJK	240	218	210	226	214	Neutral	Bullish	Neutral	Middle Bands	Under	Under	Under
ASIIJK	8,925	8,375	8,500	8,650	8,575	Overbought	Bearish	Neutral	Lower Bands	Under	Upper	Upper
ASRIJK	366	350	346	366	352	Neutral	Bullish	Neutral	Middle Bands	Under	Under	Under
BBCAJK	17,750	16,925	16,550	17,750	17,350	Neutral	Bearish	Neutral	Middle Bands	Upper	Upper	Upper
BBKPJK	630	635	625	670	645	Neutral	Bearish	Neutral	Middle Bands	Upper	Upper	Upper
BBNIJK	6,700	6,250	6,350	6,575	6,300	Overbought	Bullish	Neutral	Middle Bands	Under	Under	Upper
BBRIJK	13,250	12,425	12,800	13,250	12,750	Overbought	Bearish	Neutral	Lower Bands	Under	Upper	Upper
BBTNJK	2,390	2,270	2,250	2,390	2,290	Neutral	Bearish	Neutral	Middle Bands	Under	Upper	Upper
BDMNJK	5,000	4,700	4,650	4,870	4,770	Neutral	Bullish	Neutral	Middle Bands	Under	Under	Upper
BHITJK	131	124	123	129	125	Overbought	Bullish	Neutral	Middle Bands	Under	Under	Under
BJBRJK	2,470	2,110	1,960	2,300	2,130	Overbought	Bullish	Neutral	Middle Bands	Under	Under	Upper
BJTMJK	840	660	615	740	685	Overbought	Bearish	Neutral	Middle Bands	Upper	Upper	Upper
BKSLJK	100	90	90	95	92	Neutral	Bearish	Neutral	Middle Bands	Under	Under	Under
BMRIJK	11,450	11,625	11,600	12,275	11,700	Overbought	Bearish	Neutral	Middle Bands	Under	Upper	Upper
BMTRJK	535	510	515	555	540	Neutral	Bearish	Neutral	Middle Bands	Under	Under	Under
BSDEJK	1,900	1,765	1,820	1,840	1,775	Overbought	Bearish	Neutral	Middle Bands	Under	Under	Under
BTPNJK	2,780	2,620	2,540	2,630	2,580	Neutral	Bullish	Neutral	Middle Bands	Under	Under	Under
BWPTJK	344	368	332	384	360	Neutral	Bullish	Neutral	Middle Bands	Upper	Upper	Upper
CMNPJK	1,490	1,435	1,430	1,450	1,440	Neutral	Bearish	Neutral	Lower Bands	Under	Under	Under
CPINJK	3,400	3,180	3,180	3,300	3,230	Overbought	Bearish	Neutral	Middle Bands	Under	Under	Under
CSAPJK	464	454	454	464	456	Neutral	Bearish	Neutral	Middle Bands	Under	Under	Under
CTRAJK	1,295	1,245	1,080	1,265	1,145	Neutral	Bullish	Neutral	Middle Bands	Upper	Under	Under
DILDJK	422	428	398	450	416	Neutral	Bearish	Neutral	Middle Bands	Upper	Under	Under
EXCLJK	3,310	2,940	2,900	3,080	2,970	Neutral	Bullish	Neutral	Middle Bands	Under	Under	Upper
GGRMJK	68,575	64,600	65,025	67,950	65,000	Overbought	Bearish	Neutral	Middle Bands	Under	Upper	Under
GIAAJK	404	384	356	396	366	Neutral	Bullish	Neutral	Middle Bands	Upper	Upper	Under
GJTLJK	1,120	1,070	1,050	1,120	1,095	Neutral	Bullish	Neutral	Middle Bands	Under	Under	Under
HEXAJK	3,980	4,530	4,100	4,600	4,230	Overbought	Bearish	Overbought	Middle Bands	Upper	Upper	Upper
HRUMJK	2,880	2,650	2,400	2,880	2,720	Neutral	Bearish	Neutral	Middle Bands	Upper	Upper	Upper
ICBPJK	8,950	8,150	7,975	8,250	8,125	Neutral	Bullish	Neutral	Middle Bands	Under	Under	Under
IMASJK	1,250	1,155	1,150	1,200	1,155	Overbought	Bullish	Neutral	Middle Bands	Under	Under	Under
INCOJK	2,370	2,230	2,270	2,310	2,260	Overbought	Bearish	Neutral	Middle Bands	Under	Under	Under
INDFJK	8,075	7,975	7,925	8,075	8,000	Neutral	Bullish	Neutral	Middle Bands	Under	Under	Under
INDYJK	805	700	725	750	710	Overbought	Bullish	Neutral	Middle Bands	Under	Under	Under
INTAJK	482	450	378	482	466	Neutral	Bearish	Overbought	Middle Bands	Upper	Upper	Upper
INTPJK	17,200	16,650	15,300	17,000	16,675	Overbought	Bullish	Neutral	Middle Bands	Upper	Upper	Upper
ITMGJK	22,300	19,600	19,425	20,650	19,825	Overbought	Bullish	Neutral	Middle Bands	Upper	Upper	Upper
JFPAJK	1,665	1,550	1,590	1,665	1,575	Neutral	Bearish	Neutral	Middle Bands	Under	Under	Under
JSMRJK	4,650	4,610	4,620	4,740	4,640	Neutral	Bearish	Neutral	Middle Bands	Under	Under	Under
KUJAJK	322	328	290	330	328	Overbought	Bullish	Neutral	Middle Bands	Upper	Upper	Upper
KLBFJK	1,620	1,540	1,545	1,600	1,570	Neutral	Bullish	Neutral	Middle Bands	Upper	Upper	Under
KRASJK	690	615	585	640	595	Neutral	Bullish	Neutral	Middle Bands	Under	Under	Under
LPCKJK	4,430	4,100	4,060	4,190	4,130	Neutral	Bullish	Neutral	Middle Bands	Under	Under	Under
LPKRJK	740	740	720	780	730	Neutral	Bearish	Neutral	Middle Bands	Upper	Under	Under
LPPFJK	13,875	13,350	13,225	13,875	13,425	Neutral	Bearish	Neutral	Middle Bands	Under	Under	Under
LSIPJK	1,505	1,395	1,370	1,445	1,405	Neutral	Bullish	Neutral	Middle Bands	Under	Under	Under
MAINJK	1,410	1,275	1,210	1,310	1,275	Overbought	Bullish	Neutral	Middle Bands	Upper	Upper	Under
MAPIJK	6,550	6,225	5,675	6,550	6,225	Neutral	Bearish	Neutral	Middle Bands	Upper	Upper	Upper
MASAJK	270	240	244	252	242	Neutral	Bullish	Neutral	Lower Bands	Under	Upper	Upper
MNCNJK	1,910	1,740	1,730	1,910	1,800	Neutral	Bearish	Neutral	Lower Bands	Under	Upper	Under
MPPAJK	1,180	970	950	1,060	990	Overbought	Bullish	Overbought	Middle Bands	Under	Under	Under
MTLAJK	340	326	320	328	322	Neutral	Bullish	Neutral	Upper Bands	Upper	Upper	Upper
MYORJK	2,100	2,050	2,060	2,100	2,050	Neutral	Bearish	Neutral	Middle Bands	Under	Upper	Upper
PGASJK	2,580	2,480	2,410	2,560	2,480	Neutral	Bullish	Neutral	Middle Bands	Under	Under	Under
PTBAJK	14,200	12,825	11,975	13,275	12,575	Neutral	Bullish	Neutral	Middle Bands	Upper	Upper	Upper
RALSJK	1,190	1,150	1,145	1,190	1,160	Neutral	Bearish	Neutral	Middle Bands	Under	Under	Under
ROTIJK	1,655	1,625	1,540	1,655	1,600	Neutral	Bullish	Neutral	Middle Bands	Upper	Upper	Upper
SCMAJK	2,910	2,810	2,780	2,910	2,820	Neutral	Bearish	Neutral	Middle Bands	Upper	Under	Under
SGROJK	2,070	2,030	1,990	2,050	2,030	Neutral	Bullish	Neutral	Middle Bands	Upper	Upper	Upper
SIMPJK	690	625	630	670	640	Neutral	Bearish	Neutral	Middle Bands	Upper	Upper	Upper
SMCBJK	940	900	895	905	905	Neutral	Bullish	Neutral	Middle Bands	Under	Under	Under
SMGRJK	9,675	8,800	8,775	9,000	8,900	Neutral	Bearish	Neutral	Middle Bands	Under	Under	Under
SMRAJK	1,380	1,335	1,295	1,395	1,355	Neutral	Bearish	Neutral	Middle Bands	Under	Under	Under
SRILJK	392	300	298	310	306	Overbought	Bullish	Neutral	Middle Bands	Under	Under	Upper
SSIAJK	690	760	725	800	750	Neutral	Bearish	Neutral	Middle Bands	Upper	Upper	Upper
SSMSJK	1,510	1,715	1,630	1,725	1,695	Neutral	Bullish	Neutral	Middle Bands	Upper	Upper	Upper
TLKMJK	4,180	4,010	4,090	4,180	4,090	Neutral	Bearish	Neutral	Lower Bands	Under	Upper	Under
TOTLJK	815	800	770	820	795	Neutral	Bullish	Neutral	Middle Bands	Under	Under	Under
UNTRJK	29,200	27,225	26,500	29,200	28,475	Neutral	Bearish	Neutral	Middle Bands	Under	Upper	Upper
UNVRJK	44,000	45,300	44,900	45,500	45,325	Overbought	Bearish	Neutral	Middle Bands	Upper	Upper	Upper

Source : Reliance Research

Legend :

- Movement: Bullish and Bearish (Indicator Stochastic)
- Momentum: Oversold, Overbought and Neutral (Indicator RSI)
- Resistance Fractal: Strong Resistance
- Support Fractal: Strong Support
- Green: Good Conditions
- Red: Poor Conditions

HEAD OFFICE

Reliance Building

Jl. Pluit Sakti Raya No. 27AB,
Pluit
Jakarta 14450
T. +62 21 661 7768
F. +62 21 661 9884

RESEARCH DIVISION

Robertus Yanuar Hardy

robertus@reliance-securities.com

Rio Adrianus

rio.adrianus@reliance-securities.com

Lanjar Nafi Taulat I

lanjar@reliance-securities.com

Aji Setiawan

aji@reliance-securities.com

Shanti Dwi Jayanti

santi@reliance-securities.com

Senior Analyst

Research Analyst

Technical Research Analyst

Associate Research Analyst

Associate Research Analyst

EQUITY DIVISION

Jakarta- Pluit

Jl. Pluit Sakti Raya No. 27AB,
Pluit
Jakarta 14450
T. +62 21 661 7768
F. +62 21 661 9884

Bandung

Jl.Cisangkuy No.58
Bandung 40115
T. +62 22 721 8200
F. +62 22 721 9255

Surabaya - Gubeng

Jl. Bangka No. 22
Surabaya 60281
T. +62 31 501 1128
F. +62 31 503 3196

Makassar

Jl. Boto Lempangan No. 34 J
Makassar- Sulawesi Selatan
T. +62 411 3632388
F. +62 411 3614634

Jakarta - Sudirman

Menara Batavia Ground Floor
Jl.KH.Mas Mansyur Kav 126
Jakarta 10220
T. +62 21 57905455
F. +62 21 57950728

Tasikmalaya

Ruko Tasik Indah Plaza No.21
Jl. KHZ Mustofa No. 345
Tasikmalaya 46121
T. +62 265 345000
F. +62 265 345003

Surabaya - Diponegoro

Jl. Diponegoro No.26D
Surabaya 60261
T. +62 31 567 0388
F. +62 31 561 0528

Medan

Jl. Teuku Amir Hamzah No.40-O
Medan 20117
T. +62 61 6638592
F. +62 61 6638023

Jakarta - Kebon Jeruk

Plaza Kebon Jeruk
Jl.Raya Perjuangan Blok A/2
Jakarta 11530
T. +62 21 532 4074
F. +62 21 536 2157

Malang

Jl. Guntur No. 19
Malang 65112
T. +62 341 347 611
F. +62 341 347 615

Bali - Denpasar

Dewata Square Blok A3
Jl. Letda Tantular Renon
Denpasar 802361
T. +62 361 225099
F. +62 361 245099

Tangerang

Jl. Pahlawan Seribu Ruko BSD
Sektor 7 Blok RK kav. 9
Tangerang 15310
T. +62 21 5387495
F. +62 21 5387494

Pekanbaru

Jl. Jendral Sudirman No.73
Pekanbaru-Riau
T. +62 761 848414
F. +62 761 849456

Pontianak

Jl. MT Haryono No. 6
Pontianak 78121
T. +62 561 575674
F. +62 561 575670

Jakarta - Centro

Ruko Centro Residence Kav. 4-5
Tower C Lt. 1 No. 26-29
Jl. Macan, Daan Mogot
Jakarta 14450
T. +62 21 56945227
F. +62 21 56945226

Solo

Jl. Slamet Riyadi 330^a
Solo 57145
T. +62 271 736599
F. +62 271 733478

Balikpapan

Ruko Bukit Damai Indah
Blok I, No. 3, Rt.34
Jl. MT. Haryono, Gunung
Bahagia, Balikpapan Selatan
76114
T. +62 542 746313
F. +62 542 746317

IDX CORNER & INVESTMENT GALLERY

President University

Resto Plaza 1F - Jababeka
Education Park
Jl. Ki Hajar Dewantara Raya
Cikarang - Bekasi 17550
T. +62 21 89106030

Universitas Siliwangi Tasikmalaya

Jl. Siliwangi No. 24
Tasikmalaya 46151
T. +62 265 323685
F. +62 265 323534

Politeknik Kediri

Jl. Mayor Bismo No. 27
Kediri 64121
T. +62 354 683128
F. +62 354 683128

Universitas Muhammadiyah Sidoarjo

Jl. Majapahit 666 B
Sidoarjo, Jawa Timur
T. +62 31 8945444
F. +62 31 8949333

Universitas Tanjungpura Pontianak

Jl. Jendral Ahmad Yani
Pontianak 78124
T. +62 561 743465
F. +62 561 766840

Universitas Pesantren Tinggi Darul Ulum

Kompleks Pp Darul Ulu,
Peterongan
Jombang, Jawa Timur 60281
T. +62 321 873655
F. +62 321 875771

STIE "AUB" Surakarta

Jl. Mr. Sartono 97, Cengklik
Nusukan, Surakarta 57135
T. +62 271 854803
F. +62 271 853084

Universitas Surabaya

Jl. Raya Kalirungkut
Surabaya 60293
T. +62 31 298 1203
F. +62 31 298 1204

Universitas Muhammadiyah Gresik

Jl. Sumatra 101 GKB
Gresik 61121
T. +62 31 395 1414
F. +62 31 395 2585

Universitas Negeri Malang

Jl. Surabaya No. 6
Malang 65145
T. +62 341 585914
F. +62 341 55288

Universitas Muhammadiyah Malang

Jl. Raya Tlogomas 246
Malang 65144
T. +62 341 464318-9
F. +62 341 460782

FSEI IAIN Antasari

Jl. Ahmad Yani Km. 4,5
Banjarmasin
T. + 62 511 3265783

STIE Malangkececwara

Jl. Terusan Candi Kalasan
Malang 65142
T. +62 341 491813
F. +62 341 495619

STIESIA Surabaya

Jl. Menur Pumpungan 30
Surabaya
T. +62 31 5947505
F. +62 31 5932218

Universitas 17 Agustus 1945 Banyuwangi

Jl. Adi Sucipto 26
Banyuwangi, Jawa Timur
T. +62 333 419613
F. +62 333 419163

STIE Tri Bhakti

Jl. Teuku Umar No. 24
Cut Meutia Setiakawan,
Bekasi
T. +62 21 82429400,
82429500
F. +62 271 726156

Universitas Islam Kalimantan

Jl. Adiyaksa No. 2, Kayu
Tangi, Banjarmasin
T. + 62 511 3303871
F. + 62 511 3303871

STIKOM Bali

Jalan Puputan No. 86, Renon,
Denpasar
T. +62361 244445
F. +62361 264773

Universitas Muhammadiyah Pontianak

Fakultas Ekonomi UM
Pontianak
Jl. Ahmad Yani, No. 111,
Pontianak 78124
T. +62561 743465
F. +62561 766840

Universitas Negeri Makassar

Fakultas Ekonomi Gedung BT
Lt.2
Jl. A.P. Pettarani, Kampus
UNM, Gunungsari Baru
Makassar 90222
T. +62 411 889464 / 881244
F. +62 411 887604

STIE AAS Surakarta

Jl. Slamet Riyadi No. 361,
Kartasura, Surakarta
T. +62 271 726156
F. +62 271 726156

UPN "Veteran" Yogyakarta

Jl. Babarsari 2, Tambak Bayan
Yogyakarta
T. +62 274 485268
F. +62 274 487147

Disclaimer:

Information, opinions and recommendations contained in this document are presented by PT Reliance Sekuritas Indonesia Tbk. from sources that are considered reliable and dependable. This document is not an offer, invitation or any kind of representations to decide to buy or sell stock. Investment decisions taken based on this document is not the responsibility of PT Reliance Sekuritas Indonesia Tbk. PT Reliance Sekuritas Indonesia Tbk. reserves the right to change the contents of this document at any time without prior notice.