

## IHSG



5595.31  
-11.211  
-0.20%

Vol (Mn): 7552  
Val (Bn): 8470.815

## LQ45



922.713  
-1.282  
-0.14%

Sector Indices	Last	Change	Change %
Agriculture	1844.79	(6.17)	(0.33)
Basic Industry	603.92	(1.55)	(0.26)
Consumer	2428.26	(14.38)	(0.59)
Finance	873.89	(1.85)	(0.21)
Infrastructure	1097.49	4.87	0.44
Manufacture	1454.61	(0.33)	(0.02)
Mining	1536.62	(12.42)	(0.81)
Misc Industry	1454.87	29.93	2.06
Property	502.49	(5.60)	(1.11)
Trade	908.00	(5.45)	(0.60)

Source: relitrade next G

Most Active	Last	Change %	Freq
BUMI	398	(5.2)	23,945
RBMS	103	(1.0)	9,670
TLKM	4,110	1.0	7,698
SRIL	308	0.7	6,899
ARTI	50	0.0	6,459

Most Volume	Last	Change %	M share
BUMI	398	0.5	21,199
MYRX	137	33.0	14,553
BRMS	78	(2.5)	3,745
DEWA	67	9.8	3,633
BEKS	54	0.0	2,162

Most Value	Last	Change %	Rp Bil
BUMI	398	(5.2)	884.18
BBCA	17,325	2.4	508.10
TLKM	4,110	1.0	452.41
ASII	8,575	2.4	319.01
BBNI	6,250	(1.6)	307.71

Source: relitrade next G

## IHSG Technical Review



R3	6030
R2	5860
R1	5700
Last	5595.31
S1	5540
S2	5400
S3	5280

### Comment:

Pulled back MA7 resistance bearish momentum. Trying MA25 support level.

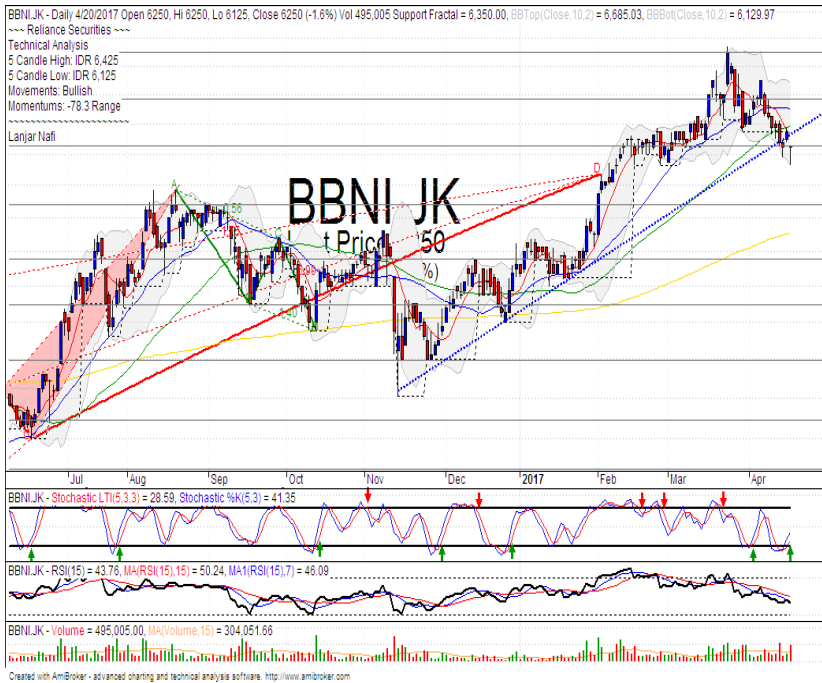
Stochastic, golden-cross at oversold oscillator.

RSI bearish reversal momentum at overbought oscillator.

Long term bullish trend movement.

Limited upside potential until 5680. Stop-loss if broke the MA25 at 5570. Downside potential 5480.

## BBNI



R3	7350
R2	6900
R1	6550
Last	6250
S1	6250
S2	5875
S3	5550
<b>BUY</b>	

**Comment:**  
Dragon fly candlestick pattern. Huge trading volume.

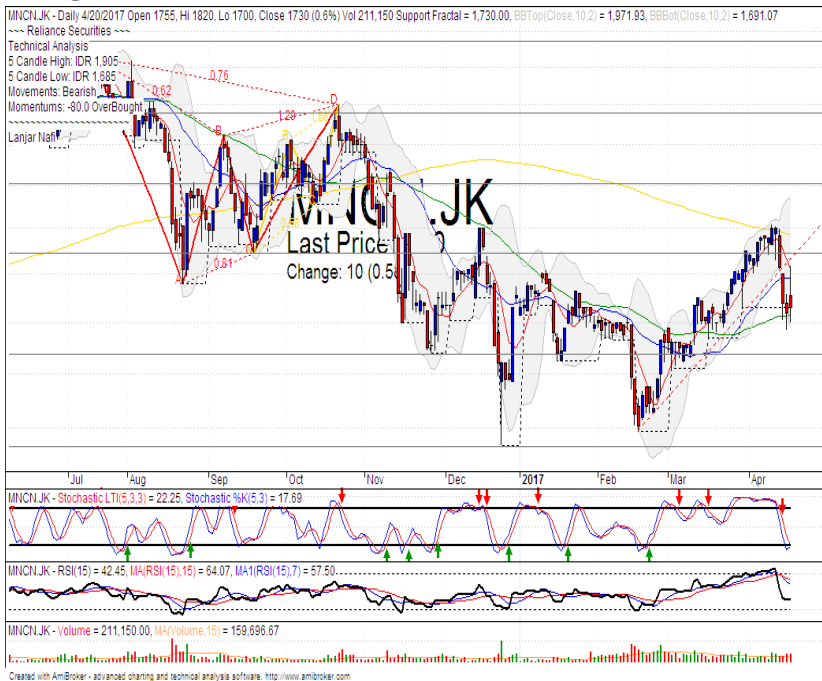
Stochastic, golden-cross at oversold oscillator.

RSI bullish reversal momentum at middle oscillator.

Long term bullish trend movement.

Upside target until upper Bollinger bands at 6750. Stop-loss level if broke the bullish trend support level at 6200. Recommended buying price at 6325.

## MNCN



R3	2180
R2	2000
R1	1845
Last	1730
S1	1640
S2	1465
S3	1315
<b>TRADING BUY</b>	

**Comment:**  
Rebounded at MA50 support level indications. Reversal signal.

Stochastic golden-cross at oversold oscillator.

RSI Flat momentum at middle oscillator with limited upside potential.

Medium term bullish trend movement.

Upside target to 1885 (MA200 resistance target level). Stop-loss if broke the MA50 support level at 1700.

## CTRA



R3	1550
R2	1450
R1	1350
Last	1265
S1	1265
S2	1160
S3	1075

**SELL**

### Comment:

Touching the AB=CD target level and pulled back MA50 resistance. Huge trading volume. Reversal signal.

Stochastic dead-cross at overbought oscillator. broad downside potential.

RSI limited bullish momentum at near overbought oscillator.

Long term bullish trend movement.

Stop-loss level if pulled back the MA50 confirmations at 1250. Corrections potential until support level at 1160.

## ASII



R3	9500
R2	9000
R1	8650
Last	8575
S1	8250
S2	7900
S3	7625

**SPECULATIVE BUY**

### Comment:

Whipsaw at bullish trend support level and pulled back the MA50 support. Reversal signal.

Stochastic golden-cross at oversold oscillator. broad upside potential.

RSI bullish reversal momentum at middle oscillator. with limited upside potential.

Medium term bullish trend movement.

Upside target to upper Bollinger bands at 8825 until 9000. Stop-loss level if broke the bullish trend support level at 8400.

Stocks	S2	S1	Closing Price	R1	R2	Technical Notes	Rec	Stop Loss	Rec Buy Prc	Target Price
<b>Plantation</b>										
AALI	13,000	14,000	14,800	14,900	15,850	Consolidations	TB	14,000		15,000
LSIP	1,250	1,300	1,385	1,405	1,545	Consolidations	TB	1,350		1,465
<b>Mining</b>										
INCO	1,965	2,120	2,180	2,300	2,500	Oversold	W	2,200		
<b>Consumer</b>										
UNVR	42,500	44,000	45,300	46,000	47,800	Overbought	PS	45,000		
INDF	7,250	7,900	7,950	8,500	9,125	Oversold	W	7,800		
KLBF	1,485	1,540	1,570	1,600	1,650	Consolidations	PS	1,500		
<b>Trading</b>										
ACES	810	870	895	920	970	Bearish momentum	S	860		
AKRA	6,100	6,350	6,425	6,600	7,000	Stoch dead-cross	PS	6,300		
UNTR	25,325	26,750	27,400	28,175	29,750	Consolidations	W	26,700		
<b>Property &amp; Construction</b>										
LPCK	3,850	4,000	4,090	4,160	4,300	Consolidations	TB	4,040		4,300
WIKA	1,990	2,200	2,330	2,400	2,600	Pulled back MA25	S	2,200		
BSDE	1,630	1,720	1,805	1,830	1,935	Consolidations	TB	1,750		1,900
WSKT	2,120	2,260	2,380	2,410	2,600	Reached the bearish trend line	PS	2,400		
ADHI	2,070	2,200	2,240	2,300	2,420	Consolidations	W	2,220		
<b>Basic Industry &amp; Chemical</b>										
SMGR	7,500	8,150	8,675	8,725	9,350	Oversold	W	8,600		
CPIN	3,000	3,210	3,290	3,400	3,580	Consolidations	TB	3,200		3,440
MAIN	1,080	1,180	1,230	1,300	1,400	Bearish momentum	W	1,200		
INTP	14,600	15,500	16,000	16,350	17,500	Break the support level	W	16,350		
<b>Miscellaneous</b>										
SRIL	270	288	308	316	350	Stoch golden-cross	SB	284		316
ASII	7,900	8,250	8,575	8,650	9,000	Stoch golden-cross	SB	8,200		8,650
<b>Finance</b>										
BBTN	2,100	2,200	2,320	2,360	2,480	Consolidations	TB	2,180		2,400
BMRI	11,100	11,450	11,525	11,800	12,200	Oversold	TB	11,400		12,400
BTPN	2,340	2,550	2,620	2,770	3,000	Pulled back	PS	2,540		2,770
BJBR	1,750	1,915	2,030	2,140	2,210	Consolidations	W	2,000		
BBRI	11,750	12,350	12,750	13,000	13,500	Consolidations	W	12,300		
<b>Infrastructure</b>										
TLKM	3,710	3,950	4,110	4,200	4,400	Oversold	TB	3,950		4,200
PGAS	2,200	2,360	2,390	2,550	2,800	Pulled back bearish trend	S	2,350		

Source : Reliance Sekuritas Indonesia

## Analyst Conclusions:

The index has consolidations after decline and arrived the MA25 support level.

Legend :

- B: BUY (allocate till 100% of the weighted capital to accumulate, higher than 50% upside probability)
- SB: SPECULATIVE BUY (allocate 25%-50% of the weighted capital to accumulate, 25%-50% upside probability)
- W: WAIT (wait for proper entry level, do the stop-loss if necessary)
- H: HOLD (hold the portfolio position, aim for the best price to distribute)
- PS: PARTIAL SELL (distribute 25%-50% part of the portfolio, 25%-50% downside probability)
- S: SELL (distribute till 100% of the portfolio, higher than 50% downside probability)
- TB: TRADING BUY (short term or intraday trading within a tight trading range. Highly speculative).

Ticker	Resistance	Price	Support	Weekly	Weekly	Indicator			Moving Average			
	Fractal	4/20/2017	Fractal	High	Low	Stochastic	RSI	B. Band	25 Days	50 Days	200 Days	
AALIJK	15,200	14,800	14,400	14,950	14,700	Neutral	Bullish	Neutral	Middle Bands	Under	Under	Under
ACESJK	920	895	865	920	905	Neutral	Bullish	Neutral	Middle Bands	Upper	Upper	Upper
ADHIJK	2,420	2,240	2,150	2,420	2,260	Neutral	Bearish	Neutral	Middle Bands	Under	Under	Under
ADROJK	1,845	1,840	1,850	1,850	1,870	Oversold	Bearish	Neutral	Middle Bands	Upper	Upper	Upper
AISAJK	2,470	2,160	2,150	2,470	2,190	Neutral	Bearish	Neutral	Middle Bands	Under	Upper	Upper
AKRAJK	6,750	6,425	6,125	6,625	6,400	Neutral	Bearish	Neutral	Middle Bands	Under	Upper	Under
ANTMJK	750	700	700	745	715	Neutral	Bearish	Neutral	Middle Bands	Under	Under	Under
APLNJK	240	210	210	226	222	Neutral	Bearish	Neutral	Middle Bands	Under	Under	Under
ASIIJK	8,925	8,575	8,500	8,650	8,525	Oversold	Bullish	Neutral	Middle Bands	Upper	Upper	Upper
ASRIJK	366	348	346	366	352	Neutral	Bearish	Neutral	Middle Bands	Under	Under	Under
BBCAJK	17,750	17,325	16,700	17,700	17,050	Neutral	Bullish	Neutral	Middle Bands	Upper	Upper	Upper
BBKPKJK	630	625	625	655	635	Neutral	Bearish	Neutral	Middle Bands	Under	Upper	Under
BBNIJK	6,700	6,250	6,350	6,425	6,250	Neutral	Bullish	Neutral	Middle Bands	Under	Under	Upper
BBRIJK	13,250	12,750	12,425	13,075	12,750	Oversold	Bullish	Neutral	Middle Bands	Under	Upper	Upper
BBTNJK	2,390	2,320	2,140	2,340	2,290	Neutral	Bullish	Neutral	Middle Bands	Upper	Upper	Upper
BDMNJK	5,000	4,620	4,650	4,800	4,740	Neutral	Bearish	Neutral	Middle Bands	Under	Under	Upper
BHITJK	128	123	123	128	125	Oversold	Bullish	Neutral	Middle Bands	Under	Under	Under
BJBRJK	2,240	2,030	1,960	2,240	2,100	Neutral	Bullish	Neutral	Middle Bands	Under	Under	Upper
BJTMJK	840	655	615	715	680	Oversold	Bearish	Neutral	Middle Bands	Under	Upper	Upper
BKSLJK	100	88	90	94	90	Oversold	Bearish	Neutral	Lower Bands	Under	Under	Under
BMRIJK	11,450	11,525	11,500	11,850	11,700	Neutral	Bullish	Neutral	Middle Bands	Under	Under	Upper
BMTRJK	535	520	510	550	515	Oversold	Bearish	Neutral	Middle Bands	Under	Under	Under
BSDEJK	1,900	1,805	1,750	1,820	1,775	Neutral	Bullish	Neutral	Middle Bands	Under	Under	Under
BTPNJK	2,780	2,620	2,540	2,630	2,620	Overbought	Bearish	Neutral	Middle Bands	Under	Under	Under
BWPTJK	344	348	332	394	374	Neutral	Bearish	Neutral	Middle Bands	Upper	Under	Upper
CMNPJK	1,490	1,400	1,430	1,450	1,435	Neutral	Bearish	Oversold	Lower Bands	Under	Under	Under
CPINJK	3,400	3,290	3,180	3,290	3,230	Neutral	Bullish	Neutral	Middle Bands	Upper	Upper	Under
CSAPJK	464	454	454	462	454	Oversold	Bearish	Neutral	Middle Bands	Under	Under	Under
CTRAJK	1,295	1,265	1,080	1,315	1,255	Overbought	Bearish	Neutral	Middle Bands	Upper	Under	Under
DILDJK	422	430	398	450	434	Neutral	Bearish	Neutral	Middle Bands	Upper	Under	Under
EXCLJK	3,310	3,000	2,900	3,080	3,010	Neutral	Bearish	Neutral	Middle Bands	Under	Under	Upper
GGRMJK	68,575	63,575	65,025	65,500	64,625	Oversold	Bullish	Neutral	Lower Bands	Under	Under	Under
GIAAJK	396	372	356	396	370	Neutral	Bearish	Neutral	Middle Bands	Upper	Upper	Under
GJTLJK	1,120	1,035	1,050	1,120	1,070	Neutral	Bearish	Neutral	Lower Bands	Under	Under	Under
HEXAJK	4,600	4,550	4,100	4,600	4,420	Overbought	Bearish	Overbought	Middle Bands	Upper	Upper	Upper
HRUMJK	2,880	2,530	2,400	2,730	2,590	Oversold	Bearish	Neutral	Middle Bands	Under	Upper	Upper
ICBPJK	8,950	8,175	7,975	8,225	8,125	Neutral	Bullish	Neutral	Middle Bands	Under	Under	Under
IMASJK	1,200	1,130	1,150	1,200	1,155	Oversold	Bearish	Neutral	Lower Bands	Under	Under	Under
INCOJK	2,370	2,180	2,270	2,290	2,210	Oversold	Bearish	Neutral	Lower Bands	Under	Under	Under
INDFJK	8,075	7,950	7,925	8,075	8,000	Neutral	Bearish	Neutral	Lower Bands	Under	Under	Under
INDYJK	805	690	725	745	700	Oversold	Bearish	Neutral	Middle Bands	Under	Under	Under
INTAJK	482	454	378	482	460	Neutral	Bearish	Overbought	Middle Bands	Upper	Upper	Upper
INTPJK	17,200	16,000	16,450	16,850	16,675	Oversold	Bearish	Neutral	Lower Bands	Under	Upper	Under
ITMGJK	22,300	19,700	19,425	20,350	19,825	Neutral	Bullish	Neutral	Middle Bands	Upper	Upper	Upper
JFFAJK	1,665	1,520	1,590	1,645	1,560	Oversold	Bearish	Neutral	Middle Bands	Under	Under	Under
JSMRJK	4,700	4,510	4,620	4,700	4,640	Neutral	Bearish	Neutral	Lower Bands	Under	Under	Under
KUJAJK	322	330	290	338	328	Overbought	Bearish	Neutral	Middle Bands	Upper	Upper	Upper
KLBFJK	1,620	1,570	1,540	1,605	1,560	Neutral	Bearish	Neutral	Middle Bands	Upper	Upper	Under
KRASJK	640	585	585	640	600	Neutral	Bearish	Neutral	Middle Bands	Under	Under	Under
LPCKJK	4,190	4,090	4,060	4,190	4,150	Neutral	Bearish	Neutral	Middle Bands	Under	Under	Under
LPKRJK	780	760	720	780	760	Neutral	Bearish	Neutral	Middle Bands	Upper	Upper	Under
LPPFJK	13,875	13,250	13,225	13,875	13,300	Neutral	Bearish	Neutral	Middle Bands	Under	Under	Under
LSIPJK	1,505	1,385	1,370	1,425	1,400	Neutral	Bearish	Neutral	Middle Bands	Under	Under	Under
MAINJK	1,410	1,230	1,245	1,295	1,275	Neutral	Bullish	Neutral	Middle Bands	Under	Under	Under
MAPIJK	6,550	6,200	6,150	6,350	6,225	Oversold	Bearish	Neutral	Middle Bands	Upper	Upper	Upper
MASAJK	270	234	230	256	242	Neutral	Bullish	Neutral	Lower Bands	Under	Under	Upper
MNCNJK	1,910	1,730	1,730	1,905	1,760	Neutral	Bearish	Neutral	Middle Bands	Under	Under	Under
MPPAJK	1,030	930	950	1,030	960	Oversold	Bearish	Oversold	Middle Bands	Under	Under	Under
MTLAJK	340	326	320	328	324	Neutral	Bullish	Neutral	Upper Bands	Upper	Upper	Upper
MYORJK	2,100	1,980	1,940	2,090	2,050	Neutral	Bullish	Neutral	Lower Bands	Under	Under	Upper
PGASJK	2,560	2,390	2,410	2,560	2,420	Neutral	Bearish	Neutral	Middle Bands	Under	Under	Under
PTBAJK	14,200	12,600	11,975	13,000	12,575	Neutral	Bullish	Neutral	Middle Bands	Upper	Upper	Upper
RALSJK	1,190	1,145	1,145	1,190	1,160	Neutral	Bullish	Neutral	Middle Bands	Under	Under	Under
ROTIJK	1,655	1,640	1,540	1,650	1,600	Neutral	Bullish	Neutral	Middle Bands	Upper	Upper	Upper
SCMAJK	2,910	2,780	2,730	2,900	2,820	Neutral	Bearish	Neutral	Middle Bands	Upper	Under	Under
SGROJK	2,070	2,030	1,990	2,040	2,030	Neutral	Bullish	Neutral	Middle Bands	Upper	Upper	Upper
SIMPJK	690	615	630	665	620	Oversold	Bullish	Neutral	Middle Bands	Upper	Upper	Upper
SMCBJK	940	905	895	905	905	Neutral	Bullish	Neutral	Middle Bands	Under	Under	Under
SMGRJK	9,675	8,675	8,775	8,975	8,750	Oversold	Bearish	Neutral	Lower Bands	Under	Under	Under
SMRAJK	1,380	1,335	1,330	1,395	1,355	Neutral	Bearish	Neutral	Middle Bands	Under	Under	Under
SRILJK	392	308	298	316	306	Neutral	Bullish	Neutral	Middle Bands	Under	Under	Upper
SSIAJK	690	750	725	800	770	Neutral	Bearish	Neutral	Middle Bands	Upper	Upper	Upper
SSMSJK	1,725	1,705	1,630	1,725	1,715	Overbought	Bearish	Neutral	Middle Bands	Upper	Upper	Upper
TLKMJK	4,180	4,110	4,010	4,170	4,090	Neutral	Bullish	Neutral	Middle Bands	Under	Upper	Upper
TOTLJK	820	795	770	820	810	Neutral	Bearish	Neutral	Middle Bands	Under	Under	Under
UNTRJK	29,200	27,400	26,500	29,200	27,825	Neutral	Bearish	Neutral	Middle Bands	Under	Upper	Upper
UNVRJK	44,000	45,300	44,900	45,500	45,350	Neutral	Bearish	Neutral	Middle Bands	Upper	Upper	Upper

Source : Reliance Research

### Legend :

- Movement: Bullish and Bearish (Indicator Stochastic)
- Momentum: Oversold, Overbought and Neutral (Indicator RSI)
- Resistance Fractal: Strong Resistance
- Support Fractal: Strong Support
- Green: Good Conditions
- Red: Poor Conditions

## HEAD OFFICE

### Reliance Building

Jl. Pluit Sakti Raya No. 27AB,  
Pluit  
Jakarta 14450  
T. +62 21 661 7768  
F. +62 21 661 9884

## RESEARCH DIVISION

### Robertus Yanuar Hardy

*robertus@reliance-securities.com*

### Rio Adrianus

*rio.adrianus@reliance-securities.com*

### Lanjar Nafi Taulat I

*lanjar@reliance-securities.com*

### Aji Setiawan

*aji@reliance-securities.com*

### Shanti Dwi Jayanti

*santi@reliance-securities.com*

Senior Analyst

Research Analyst

Technical Research Analyst

Associate Research Analyst

Associate Research Analyst

## EQUITY DIVISION

### Jakarta- Pluit

Jl. Pluit Sakti Raya No. 27AB,  
Pluit  
Jakarta 14450  
T. +62 21 661 7768  
F. +62 21 661 9884

### Bandung

Jl.Cisangkuy No.58  
Bandung 40115  
T. +62 22 721 8200  
F. +62 22 721 9255

### Surabaya - Gubeng

Jl. Bangka No. 22  
Surabaya 60281  
T. +62 31 501 1128  
F. +62 31 503 3196

### Makassar

Jl. Boto Lempangan No. 34 J  
Makassar- Sulawesi Selatan  
T. +62 411 3632388  
F. +62 411 3614634

### Jakarta - Sudirman

Menara Batavia Ground Floor  
Jl.KH.Mas Mansyur Kav 126  
Jakarta 10220  
T. +62 21 57905455  
F. +62 21 57950728

### Tasikmalaya

Ruko Tasik Indah Plaza No.21  
Jl. KHZ Mustofa No. 345  
Tasikmalaya 46121  
T. +62 265 345000  
F. +62 265 345003

### Surabaya - Diponegoro

Jl. Diponegoro No.26D  
Surabaya 60261  
T. +62 31 567 0388  
F. +62 31 561 0528

### Medan

Jl. Teuku Amir Hamzah No.40-O  
Medan 20117  
T. +62 61 6638592  
F. +62 61 6638023

### Jakarta - Kebon Jeruk

Plaza Kebon Jeruk  
Jl.Raya Perjuangan Blok A/2  
Jakarta 11530  
T. +62 21 532 4074  
F. +62 21 536 2157

### Malang

Jl. Guntur No. 19  
Malang 65112  
T. +62 341 347 611  
F. +62 341 347 615

### Bali - Denpasar

Dewata Square Blok A3  
Jl. Letda Tantular Renon  
Denpasar 802361  
T. +62 361 225099  
F. +62 361 245099

### Tangerang

Jl. Pahlawan Seribu Ruko BSD  
Sektor 7 Blok RK kav. 9  
Tangerang 15310  
T. +62 21 5387495  
F. +62 21 5387494

### Pekanbaru

Jl. Jendral Sudirman No.73  
Pekanbaru-Riau  
T. +62 761 848414  
F. +62 761 849456

### Pontianak

Jl. MT Haryono No. 6  
Pontianak 78121  
T. +62 561 575674  
F. +62 561 575670

### Jakarta - Centro

Ruko Centro Residence Kav. 4-5  
Tower C Lt. 1 No. 26-29  
Jl. Macan, Daan Mogot  
Jakarta 14450  
T. +62 21 56945227  
F. +62 21 56945226

### Solo

Jl. Slamet Riyadi 330<sup>a</sup>  
Solo 57145  
T. +62 271 736599  
F. +62 271 733478

### Balikpapan

Ruko Bukit Damai Indah  
Blok I, No. 3, Rt.34  
Jl. MT. Haryono, Gunung  
Bahagia, Balikpapan Selatan  
76114  
T. +62 542 746313  
F. +62 542 746317

**IDX CORNER & INVESTMENT GALLERY****President University**

Resto Plaza 1F - Jababeka  
Education Park  
Jl. Ki Hajar Dewantara Raya  
Cikarang - Bekasi 17550  
T. +62 21 89106030

**Universitas Siliwangi  
Tasikmalaya**

Jl. Siliwangi No. 24  
Tasikmalaya 46151  
T. +62 265 323685  
F. +62 265 323534

**Politeknik Kediri**

Jl. Mayor Bismo No. 27  
Kediri 64121  
T. +62 354 683128  
F. +62 354 683128

**Universitas Muhammadiyah  
Sidoarjo**

Jl. Majapahit 666 B  
Sidoarjo, Jawa Timur  
T. +62 31 8945444  
F. +62 31 8949333

**Universitas Tanjungpura  
Pontianak**

Jl. Jendral Ahmad Yani  
Pontianak 78124  
T. +62 561 743465  
F. +62 561 766840

**Universitas Pesantren Tinggi  
Darul Ulum**

Kompleks Pp Darul Ulu,  
Peterongan  
Jombang, Jawa Timur 60281  
T. +62 321 873655  
F. +62 321 875771

**STIE "AUB" Surakarta**

Jl. Mr. Sartono 97, Cengklik  
Nusukan, Surakarta 57135  
T. +62 271 854803  
F. +62 271 853084

**Universitas Surabaya**

Jl. Raya Kalirungkut  
Surabaya 60293  
T. +62 31 298 1203  
F. +62 31 298 1204

**Universitas Muhammadiyah  
Gresik**

Jl. Sumatra 101 GKB  
Gresik 61121  
T. +62 31 395 1414  
F. +62 31 395 2585

**Universitas Negeri Malang**

Jl. Surabaya No. 6  
Malang 65145  
T. +62 341 585914  
F. +62 341 55288

**Universitas Muhammadiyah  
Malang**

Jl. Raya Tlogomas 246  
Malang 65144  
T. +62 341 464318-9  
F. +62 341 460782

**FSEI IAIN Antasari**

Jl. Ahmad Yani Km. 4,5  
Banjarmasin  
T. + 62 511 3265783

**STIE Malangkececwara**

Jl. Terusan Candi Kalasan  
Malang 65142  
T. +62 341 491813  
F. +62 341 495619

**STIESIA Surabaya**

Jl. Menur Pumpungan 30  
Surabaya  
T. +62 31 5947505  
F. +62 31 5932218

**Universitas 17 Agustus  
1945 Banyuwangi**

Jl. Adi Sucipto 26  
Banyuwangi, Jawa Timur  
T. +62 333 419613  
F. +62 333 419163

**STIE Tri Bhakti**

Jl. Teuku Umar No. 24  
Cut Meutia Setiakawan,  
Bekasi  
T. +62 21 82429400,  
82429500  
F. +62 271 726156

**Universitas Islam  
Kalimantan**

Jl. Adiyaksa No. 2, Kayu  
Tangi, Banjarmasin  
T. + 62 511 3303871  
F. + 62 511 3303871

**STIKOM Bali**

Jalan Puputan No. 86, Renon,  
Denpasar  
T. +62361 244445  
F. +62361 264773

**Universitas Muhammadiyah  
Pontianak**

Fakultas Ekonomi UM  
Pontianak  
Jl. Ahmad Yani, No. 111,  
Pontianak 78124  
T. +62561 743465  
F. +62561 766840

**Universitas Negeri  
Makassar**

Fakultas Ekonomi Gedung BT  
Lt.2  
Jl. A.P. Pettarani, Kampus  
UNM, Gunungsari Baru  
Makassar 90222  
T. +62 411 889464 / 881244  
F. +62 411 887604

**STIE AAS Surakarta**

Jl. Slamet Riyadi No. 361,  
Kartasura, Surakarta  
T. +62 271 726156  
F. +62 271 726156

**UPN "Veteran" Yogyakarta**

Jl. Babarsari 2, Tambak Bayan  
Yogyakarta  
T. +62 274 485268  
F. +62 274 487147

**Disclaimer:**

Information, opinions and recommendations contained in this document are presented by PT Reliance Sekuritas Indonesia Tbk. from sources that are considered reliable and dependable. This document is not an offer, invitation or any kind of representations to decide to buy or sell stock. Investment decisions taken based on this document is not the responsibility of PT Reliance Sekuritas Indonesia Tbk. PT Reliance Sekuritas Indonesia Tbk. reserves the right to change the contents of this document at any time without prior notice.