

IHSG



5664.48
69.169
1.24%

Vol (Mn): 9838
Val (Bn): 7987

LQ45



938.177
15.464
1.68%

Sector Indices	Last	Change	Change %
Agriculture	1823.24	(21.55)	(1.18)
Basic Industry	604.67	0.75	0.12
Consumer	2438.36	10.11	0.41
Finance	876.61	2.72	0.31
Infrastructure	1144.59	47.10	4.12
Manufacture	1474.14	19.53	1.32
Mining	1527.26	(9.37)	(0.61)
Misc Industry	1536.73	81.86	5.33
Property	508.32	5.83	1.15
Trade	917.71	9.71	1.06

Source: relitrade next G

Most Active	Last	Change %	Freq
BNLI	695	3.0	12,394
TLKM	420	281.8	10,004
ASII	9,150	6.7	7,868
SRIL	306	(0.6)	5,936
KBLI	670	3.9	5,514

Most Volume	Last	Change %	M share
MYRX	141	2.9	20,291
RIMO	166	8.5	3,133
TLKM	4,420	7.5	2,370
LPKR	775	2.0	1,663
BUMI	402	1.0	1,599

Most Value	Last	Change %	Rp Bil
TLKM	4,420	7.5	1,021.42
ASII	9,150	6.7	658.00
BBNI	6,150	(1.6)	334.05
BBCA	17,475	0.9	301.11
MYRX	141	2.9	276.91

Source: relitrade next G

IHSG Technical Review



R3	6030
R2	5860
R1	5700
Last	5664.48
S1	5540
S2	5400
S3	5280

Comment:

Rebounded at MA25 and break out the MA7. Bullish consolidations and trying reached to high level.

Stochastic, golden-cross at oversold oscillator.

RSI bearish reversal momentum at overbought oscillator.

Long term bullish trend movement.

Limited upside potential until 5680. Stop-loss if broke the MA25 at 5570. Downside potential 5480.

KLBF



R3	1700
R2	1650
R1	1600
Last	1580
S1	1540
S2	1485
S3	1420

BUY

Comment:

Flag pattern. Continuations signal. Moderate trading volume.

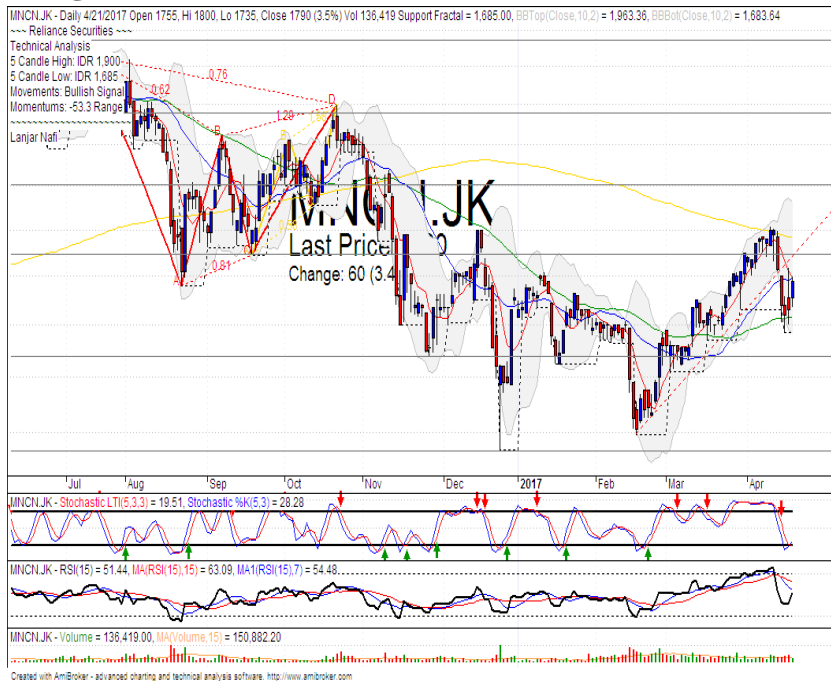
Stochastic, golden-cross at oversold oscillator.

RSI bullish reversal momentum at middle oscillator.

Long term bullish trend movement.

Upside target until flag pole target at 1665. Stop-loss if broke the MA25 support level at 1540. Recommended buying price at 1575.

MNCN



R3	2180
R2	2000
R1	1845
Last	1790
S1	1640
S2	1465
S3	1315

BUY

Comment:

Bullish separating line after whipsaw at MA50 support level. Reversal signal.

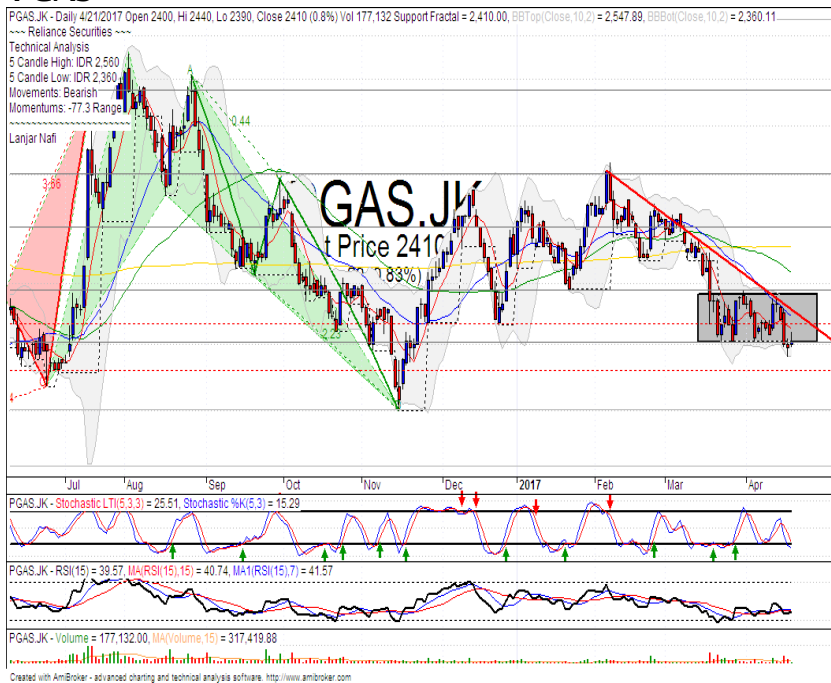
Stochastic golden-cross at oversold oscillator.

RSI Flat momentum at middle oscillator with limited upside potential.

Medium term bullish trend movement.

Upside target to 1885 (MA200 resistance target level). Stop-loss if broke the MA50 support level at 1700. Recommended buying price at 1785.

PGAS



R3	3000
R2	2800
R1	2570
Last	2410
S1	2410
S2	2200
S3	2050
TRADING BUY	

Comment:

Rectangle pattern. Trying to whipsaw at the lower bound. Moderate trading volume.

Stochastic golden-cross at oversold oscillator.

RSI Flat momentum at near oversold oscillator.

Medium term bearish trend movement.

Upside target to upper bound rectangle pattern at 2570. Stop-loss if broke the lower bound rectangle support pattern at 2380.

ASII



R3	10500
R2	10000
R1	9500
Last	9150
S1	9000
S2	8650
S3	8250
PARTIAL SELL	

Comment:

Reached the target channeling trend level with surged significant. Distributions potential at the high level.

Stochastic limited upside after golden-cross at oversold.

RSI reached the overbought momentum.

Medium term bullish trend movement.

Stop-loss if pulled back the channeling trend at 9075. Corrections target until bullish trend support level at 8750.

Stocks	S2	S1	Closing Price	R1	R2	Technical Notes	Rec	Stop Loss	Rec Buy Prc	Target Price
Plantation										
AALI	13,000	14,000	14,500	14,900	15,850	Consolidations	W	14,000		
LSIP	1,250	1,300	1,370	1,405	1,545	Consolidations	W	1,350		
Mining										
INCO	1,965	2,120	2,150	2,300	2,500	Oversold	W	2,100		
Consumer										
UNVR	42,500	44,000	45,525	46,000	47,800	Overbought	PS	45,000		
INDF	7,250	7,900	8,025	8,500	9,125	Oversold	TB	7,800		8,500
KLBF	1,485	1,540	1,580	1,600	1,650	Consolidations	TB	1,530		1,600
Trading										
ACES	810	870	900	920	970	Consolidations	TB	860		920
AKRA	6,100	6,350	6,600	6,600	7,000	Stoch dead-cross	PS	6,300		
UNTR	25,325	26,750	26,925	28,175	29,750	Consolidations	W	26,700		
Property & Construction										
LPCK	4,000	4,160	4,180	4,300	4,450	Broke the support level	TB	4,130		4,300
WIKA	1,990	2,200	2,370	2,400	2,600	Pulled back MA25	S	2,200		
BSDE	1,630	1,720	1,820	1,830	1,935	Consolidations	TB	1,750		1,900
WSKT	2,120	2,260	2,400	2,410	2,600	Reached the bearish trend line	PS	2,400		
ADHI	2,070	2,200	2,290	2,300	2,420	Consolidations	W	2,220		
Basic Industry & Chemical										
SMGR	7,500	8,150	8,700	8,725	9,350	Stoch golden-cross	TB	8,600		9,200
CPIN	3,000	3,210	3,300	3,400	3,580	Consolidations	TB	3,200		3,440
MAIN	1,080	1,180	1,225	1,300	1,400	Bearish momentum	W	1,200		
INTP	14,600	15,500	16,000	16,350	17,500	Consolidations	W	16,350		
Miscellaneous										
SRIL	270	288	306	316	350	Stoch golden-cross	SB	284		316
ASII	8,650	9,000	9,150	9,500	10,000	Bullish momentum	H	9,100		9,500
Finance										
BBTN	2,100	2,200	2,330	2,360	2,480	Consolidations	TB	2,180		2,400
BMRI	11,100	11,450	11,400	11,800	12,200	Oversold	TB	11,400		12,400
BTPN	2,340	2,550	2,600	2,770	3,000	Consolidations	PS	2,540		
BJBR	1,750	1,915	2,040	2,140	2,210	Consolidations	W	2,000		
BBRI	11,750	12,350	12,925	13,000	13,500	Consolidations	W	12,300		
Infrastructure										
TLKM	4,200	4,400	4,420	4,580	4,740	Bullish momentum	H	4,380		4,500
PGAS	2,200	2,360	2,410	2,550	2,800	Oversold	S	2,400		

Source : Reliance Sekuritas Indonesia

Analyst Conclusions:

The index has consolidations after decline and arrived the MA25 support level.

Legend :

- B: BUY (allocate till 100% of the weighted capital to accumulate, higher than 50% upside probability)
- SB: SPECULATIVE BUY (allocate 25%-50% of the weighted capital to accumulate, 25%-50% upside probability)
- W: WAIT (wait for proper entry level, do the stop-loss if necessary)
- H: HOLD (hold the portfolio position, aim for the best price to distribute)
- PS: PARTIAL SELL (distribute 25%-50% part of the portfolio, 25%-50% downside probability)
- S: SELL (distribute till 100% of the portfolio, higher than 50% downside probability)
- TB: TRADING BUY (short term or intraday trading within a tight trading range. Highly speculative).

Ticker	Resistance	Price	Support	Weekly	Weekly	Indicator			Moving Average			
	Fractal	4/21/2017	Fractal	High	Low	Stochastic	RSI	B. Band	25 Days	50 Days	200 Days	
AALIJK	15,200	14,500	14,400	14,950	14,650	Neutral	Bearish	Neutral	Middle Bands	Under	Under	Under
ACESJK	920	900	880	920	910	Neutral	Bullish	Neutral	Middle Bands	Upper	Upper	Upper
ADHIJK	2,420	2,290	2,150	2,420	2,260	Neutral	Bearish	Neutral	Middle Bands	Under	Upper	Under
ADROJK	1,845	1,840	1,850	1,890	1,850	Oversold	Bullish	Neutral	Middle Bands	Upper	Upper	Upper
AISAJK	2,470	2,210	2,150	2,470	2,190	Neutral	Bearish	Neutral	Middle Bands	Under	Upper	Upper
AKRAJK	6,750	6,600	6,125	6,625	6,550	Neutral	Bearish	Neutral	Middle Bands	Upper	Upper	Upper
ANTMJK	750	700	700	745	705	Neutral	Bearish	Neutral	Middle Bands	Under	Under	Under
APLNJK	240	216	210	226	216	Neutral	Bearish	Neutral	Middle Bands	Under	Under	Under
ASIIJK	8,925	9,150	8,350	9,150	8,525	Neutral	Bullish	Overbought	Upper Bands	Upper	Upper	Upper
ASRIJK	366	346	346	360	350	Neutral	Bearish	Neutral	Middle Bands	Under	Under	Under
BBCAJK	17,750	17,475	16,700	17,700	17,050	Neutral	Bullish	Neutral	Middle Bands	Upper	Upper	Upper
BBKPJK	630	625	625	650	635	Oversold	Bearish	Neutral	Middle Bands	Under	Upper	Under
BBNIJK	6,700	6,150	6,350	6,425	6,250	Neutral	Bullish	Neutral	Lower Bands	Under	Under	Upper
BBRIJK	13,250	12,925	12,425	13,075	12,750	Neutral	Bullish	Neutral	Middle Bands	Upper	Upper	Upper
BBTNJK	2,390	2,330	2,140	2,360	2,290	Neutral	Bullish	Neutral	Middle Bands	Upper	Upper	Upper
BDMNJK	5,000	4,550	4,650	4,800	4,620	Oversold	Bearish	Neutral	Lower Bands	Under	Under	Upper
BHITJK	128	123	120	128	125	Neutral	Bullish	Neutral	Middle Bands	Under	Under	Under
BJBRJK	2,240	2,040	1,960	2,240	2,090	Neutral	Bearish	Neutral	Middle Bands	Under	Under	Upper
BJTMJK	840	665	615	715	665	Oversold	Bullish	Neutral	Middle Bands	Under	Upper	Upper
BKSLJK	100	89	90	93	89	Oversold	Bullish	Neutral	Middle Bands	Under	Under	Under
BMRIJK	11,450	11,400	11,500	11,850	11,675	Neutral	Bearish	Neutral	Middle Bands	Under	Under	Upper
BMTRJK	535	540	510	545	515	Oversold	Bullish	Neutral	Middle Bands	Upper	Upper	Under
BSDEJK	1,900	1,820	1,750	1,820	1,775	Neutral	Bullish	Neutral	Middle Bands	Under	Under	Under
BTPNJK	2,780	2,600	2,540	2,630	2,620	Neutral	Bearish	Neutral	Middle Bands	Under	Under	Under
BWPTJK	394	328	332	394	352	Neutral	Bearish	Neutral	Middle Bands	Under	Under	Upper
CMNPJK	1,490	1,410	1,430	1,450	1,420	Neutral	Bearish	Neutral	Lower Bands	Under	Under	Under
CPINJK	3,400	3,300	3,180	3,300	3,230	Neutral	Bullish	Neutral	Middle Bands	Upper	Upper	Under
CSAPJK	464	454	454	458	454	Oversold	Bearish	Neutral	Middle Bands	Under	Under	Under
CTRAJK	1,295	1,300	1,080	1,315	1,255	Overbought	Bearish	Neutral	Middle Bands	Upper	Upper	Under
DILDJK	422	430	398	450	434	Neutral	Bearish	Neutral	Middle Bands	Upper	Under	Under
EXCLJK	3,310	3,000	2,900	3,080	3,010	Neutral	Bullish	Neutral	Middle Bands	Under	Under	Upper
GGRMJK	68,575	64,200	65,025	65,225	64,450	Oversold	Bullish	Neutral	Middle Bands	Under	Under	Under
GIAAJK	396	370	356	396	376	Neutral	Bearish	Neutral	Middle Bands	Upper	Upper	Under
GJTLJK	1,120	1,045	1,050	1,110	1,050	Oversold	Bearish	Neutral	Middle Bands	Under	Under	Under
HEXAJK	4,600	4,520	4,100	4,600	4,420	Overbought	Bearish	Overbought	Middle Bands	Upper	Upper	Upper
HRUMJK	2,880	2,520	2,400	2,730	2,570	Oversold	Bearish	Neutral	Middle Bands	Under	Upper	Upper
ICBPJK	8,950	8,400	8,075	8,425	8,200	Neutral	Bullish	Neutral	Upper Bands	Upper	Upper	Under
IMASJK	1,200	1,150	1,150	1,200	1,150	Oversold	Bullish	Neutral	Middle Bands	Under	Under	Under
INCOJK	2,370	2,150	2,270	2,280	2,200	Oversold	Bearish	Oversold	Lower Bands	Under	Under	Under
INDFJK	8,075	8,025	7,925	8,100	8,000	Neutral	Bullish	Neutral	Upper Bands	Under	Under	Under
INDYJK	805	695	690	715	700	Oversold	Bullish	Neutral	Middle Bands	Under	Under	Under
INTAJK	482	454	446	480	460	Oversold	Bullish	Overbought	Middle Bands	Upper	Upper	Upper
INTPJK	17,200	16,000	16,450	16,750	16,350	Oversold	Bearish	Neutral	Lower Bands	Under	Upper	Under
ITMGJK	22,300	18,800	19,425	20,350	19,750	Neutral	Bullish	Neutral	Middle Bands	Under	Upper	Upper
JFPAJK	1,665	1,525	1,590	1,595	1,545	Oversold	Bullish	Neutral	Middle Bands	Under	Under	Under
JSMRJK	4,700	4,470	4,620	4,700	4,540	Neutral	Bearish	Neutral	Lower Bands	Under	Under	Under
KUJAJK	322	330	290	338	330	Overbought	Bearish	Neutral	Middle Bands	Upper	Upper	Upper
KLBFJK	1,620	1,580	1,540	1,605	1,560	Neutral	Bullish	Neutral	Middle Bands	Upper	Upper	Under
KRASJK	640	580	585	640	595	Neutral	Bearish	Neutral	Middle Bands	Under	Under	Under
LPCKJK	4,190	4,180	4,060	4,240	4,160	Neutral	Bullish	Neutral	Middle Bands	Under	Under	Under
LPKRJK	780	775	735	780	760	Neutral	Bullish	Neutral	Middle Bands	Upper	Upper	Under
LPPFJK	13,875	13,300	13,225	13,725	13,300	Neutral	Bullish	Neutral	Middle Bands	Under	Under	Under
LSIPJK	1,505	1,370	1,370	1,415	1,400	Neutral	Bearish	Neutral	Middle Bands	Under	Under	Under
MAINJK	1,295	1,225	1,245	1,295	1,240	Neutral	Bearish	Neutral	Middle Bands	Under	Under	Under
MAPIJK	6,550	6,150	6,150	6,300	6,225	Oversold	Bearish	Neutral	Middle Bands	Upper	Upper	Upper
MASAJK	256	232	230	256	234	Neutral	Bearish	Neutral	Lower Bands	Under	Under	Upper
MNCNJK	1,910	1,790	1,685	1,900	1,760	Oversold	Bullish	Neutral	Middle Bands	Under	Upper	Under
MPPAJK	1,030	925	950	1,030	940	Oversold	Bearish	Oversold	Middle Bands	Under	Under	Under
MTLAJK	340	324	320	328	324	Neutral	Bearish	Neutral	Middle Bands	Upper	Upper	Upper
MYORJK	2,100	2,000	1,940	2,080	2,010	Neutral	Bearish	Neutral	Middle Bands	Under	Under	Upper
PGASJK	2,560	2,410	2,410	2,560	2,420	Neutral	Bearish	Neutral	Middle Bands	Under	Under	Under
PTBAJK	14,200	12,450	11,975	12,975	12,575	Neutral	Bearish	Neutral	Middle Bands	Upper	Upper	Upper
RALSJK	1,190	1,125	1,145	1,170	1,150	Neutral	Bearish	Neutral	Middle Bands	Under	Under	Under
ROTIJK	1,655	1,620	1,540	1,655	1,620	Neutral	Bullish	Neutral	Middle Bands	Upper	Upper	Upper
SCMAJK	2,910	2,870	2,730	2,900	2,820	Neutral	Bullish	Neutral	Middle Bands	Upper	Upper	Upper
SGROJK	2,070	2,040	1,960	2,040	2,030	Neutral	Bullish	Neutral	Middle Bands	Upper	Upper	Upper
SIMPJK	690	615	600	660	620	Oversold	Bullish	Neutral	Middle Bands	Under	Upper	Upper
SMCBJK	940	900	895	905	905	Neutral	Bullish	Neutral	Middle Bands	Under	Under	Under
SMGRJK	9,675	8,700	8,775	8,950	8,750	Oversold	Bearish	Neutral	Middle Bands	Under	Under	Under
SMRAJK	1,380	1,390	1,330	1,400	1,355	Neutral	Bullish	Neutral	Upper Bands	Upper	Upper	Under
SRILJK	392	306	300	316	306	Neutral	Bullish	Neutral	Middle Bands	Under	Under	Upper
SSIAJK	690	740	740	790	760	Neutral	Bearish	Neutral	Middle Bands	Upper	Upper	Upper
SSMSJK	1,725	1,665	1,630	1,725	1,710	Neutral	Bearish	Neutral	Middle Bands	Upper	Upper	Upper
TLKMJK	4,180	4,420	4,010	4,420	4,090	Neutral	Bullish	Overbought	Upper Bands	Upper	Upper	Upper
TOTLJK	820	815	770	820	810	Neutral	Bearish	Neutral	Middle Bands	Upper	Upper	Upper
UNTRJK	29,200	26,925	26,500	28,950	27,350	Oversold	Bearish	Neutral	Middle Bands	Under	Upper	Upper
UNVRJK	44,000	45,525	44,900	45,600	45,350	Neutral	Bullish	Neutral	Middle Bands	Upper	Upper	Upper

Source : Reliance Research

Legend :

- Movement: Bullish and Bearish (Indicator Stochastic)
- Momentum: Oversold, Overbought and Neutral (Indicator RSI)
- Resistance Fractal: Strong Resistance
- Support Fractal: Strong Support
- Green: Good Conditions
- Red: Poor Conditions

HEAD OFFICE

Reliance Building

Jl. Pluit Sakti Raya No. 27AB,
Pluit
Jakarta 14450
T. +62 21 661 7768
F. +62 21 661 9884

RESEARCH DIVISION

Robertus Yanuar Hardy

robertus@reliance-securities.com

Rio Adrianus

rio.adrianus@reliance-securities.com

Lanjar Nafi Taulat I

lanjar@reliance-securities.com

Aji Setiawan

aji@reliance-securities.com

Shanti Dwi Jayanti

santi@reliance-securities.com

Senior Analyst

Research Analyst

Technical Research Analyst

Associate Research Analyst

Associate Research Analyst

EQUITY DIVISION

Jakarta- Pluit

Jl. Pluit Sakti Raya No. 27AB,
Pluit
Jakarta 14450
T. +62 21 661 7768
F. +62 21 661 9884

Bandung

Jl.Cisangkuy No.58
Bandung 40115
T. +62 22 721 8200
F. +62 22 721 9255

Surabaya - Gubeng

Jl. Bangka No. 22
Surabaya 60281
T. +62 31 501 1128
F. +62 31 503 3196

Makassar

Jl. Boto Lempangan No. 34 J
Makassar- Sulawesi Selatan
T. +62 411 3632388
F. +62 411 3614634

Jakarta - Sudirman

Menara Batavia Ground Floor
Jl.KH.Mas Mansyur Kav 126
Jakarta 10220
T. +62 21 57905455
F. +62 21 57950728

Tasikmalaya

Ruko Tasik Indah Plaza No.21
Jl. KHZ Mustofa No. 345
Tasikmalaya 46121
T. +62 265 345000
F. +62 265 345003

Surabaya - Diponegoro

Jl. Diponegoro No.26D
Surabaya 60261
T. +62 31 567 0388
F. +62 31 561 0528

Medan

Jl. Teuku Amir Hamzah No.40-O
Medan 20117
T. +62 61 6638592
F. +62 61 6638023

Jakarta - Kebon Jeruk

Plaza Kebon Jeruk
Jl.Raya Perjuangan Blok A/2
Jakarta 11530
T. +62 21 532 4074
F. +62 21 536 2157

Malang

Jl. Guntur No. 19
Malang 65112
T. +62 341 347 611
F. +62 341 347 615

Bali - Denpasar

Dewata Square Blok A3
Jl. Letda Tantular Renon
Denpasar 802361
T. +62 361 225099
F. +62 361 245099

Tangerang

Jl. Pahlawan Seribu Ruko BSD
Sektor 7 Blok RK kav. 9
Tangerang 15310
T. +62 21 5387495
F. +62 21 5387494

Pekanbaru

Jl. Jendral Sudirman No.73
Pekanbaru-Riau
T. +62 761 848414
F. +62 761 849456

Pontianak

Jl. MT Haryono No. 6
Pontianak 78121
T. +62 561 575674
F. +62 561 575670

Jakarta - Centro

Ruko Centro Residence Kav. 4-5
Tower C Lt. 1 No. 26-29
Jl. Macan, Daan Mogot
Jakarta 14450
T. +62 21 56945227
F. +62 21 56945226

Solo

Jl. Slamet Riyadi 330^a
Solo 57145
T. +62 271 736599
F. +62 271 733478

Balikpapan

Ruko Bukit Damai Indah
Blok I, No. 3, Rt.34
Jl. MT. Haryono, Gunung
Bahagia, Balikpapan Selatan
76114
T. +62 542 746313
F. +62 542 746317

IDX CORNER & INVESTMENT GALLERY**President University**

Resto Plaza 1F - Jababeka
Education Park
Jl. Ki Hajar Dewantara Raya
Cikarang - Bekasi 17550
T. +62 21 89106030

**Universitas Siliwangi
Tasikmalaya**

Jl. Siliwangi No. 24
Tasikmalaya 46151
T. +62 265 323685
F. +62 265 323534

Politeknik Kediri

Jl. Mayor Bismo No. 27
Kediri 64121
T. +62 354 683128
F. +62 354 683128

**Universitas Muhammadiyah
Sidoarjo**

Jl. Majapahit 666 B
Sidoarjo, Jawa Timur
T. +62 31 8945444
F. +62 31 8949333

**Universitas Tanjungpura
Pontianak**

Jl. Jendral Ahmad Yani
Pontianak 78124
T. +62 561 743465
F. +62 561 766840

**Universitas Pesantren Tinggi
Darul Ulum**

Kompleks Pp Darul Ulu,
Peterongan
Jombang, Jawa Timur 60281
T. +62 321 873655
F. +62 321 875771

STIE "AUB" Surakarta

Jl. Mr. Sartono 97, Cengklik
Nusukan, Surakarta 57135
T. +62 271 854803
F. +62 271 853084

Universitas Surabaya

Jl. Raya Kalirungkut
Surabaya 60293
T. +62 31 298 1203
F. +62 31 298 1204

**Universitas Muhammadiyah
Gresik**

Jl. Sumatra 101 GKB
Gresik 61121
T. +62 31 395 1414
F. +62 31 395 2585

Universitas Negeri Malang

Jl. Surabaya No. 6
Malang 65145
T. +62 341 585914
F. +62 341 55288

**Universitas Muhammadiyah
Malang**

Jl. Raya Tlogomas 246
Malang 65144
T. +62 341 464318-9
F. +62 341 460782

FSEI IAIN Antasari

Jl. Ahmad Yani Km. 4,5
Banjarmasin
T. + 62 511 3265783

STIE Malangkececwara

Jl. Terusan Candi Kalasan
Malang 65142
T. +62 341 491813
F. +62 341 495619

STIESIA Surabaya

Jl. Menur Pumpungan 30
Surabaya
T. +62 31 5947505
F. +62 31 5932218

**Universitas 17 Agustus
1945 Banyuwangi**

Jl. Adi Sucipto 26
Banyuwangi, Jawa Timur
T. +62 333 419613
F. +62 333 419163

STIE Tri Bhakti

Jl. Teuku Umar No. 24
Cut Meutia Setiakawan,
Bekasi
T. +62 21 82429400,
82429500
F. +62 271 726156

**Universitas Islam
Kalimantan**

Jl. Adiyaksa No. 2, Kayu
Tangi, Banjarmasin
T. + 62 511 3303871
F. + 62 511 3303871

STIKOM Bali

Jalan Puputan No. 86, Renon,
Denpasar
T. +62361 244445
F. +62361 264773

**Universitas Muhammadiyah
Pontianak**

Fakultas Ekonomi UM
Pontianak
Jl. Ahmad Yani, No. 111,
Pontianak 78124
T. +62561 743465
F. +62561 766840

**Universitas Negeri
Makassar**

Fakultas Ekonomi Gedung BT
Lt.2
Jl. A.P. Pettarani, Kampus
UNM, Gunungsari Baru
Makassar 90222
T. +62 411 889464 / 881244
F. +62 411 887604

STIE AAS Surakarta

Jl. Slamet Riyadi No. 361,
Kartasura, Surakarta
T. +62 271 726156
F. +62 271 726156

UPN "Veteran" Yogyakarta

Jl. Babarsari 2, Tambak Bayan
Yogyakarta
T. +62 274 485268
F. +62 274 487147

Disclaimer:

Information, opinions and recommendations contained in this document are presented by PT Reliance Sekuritas Indonesia Tbk. from sources that are considered reliable and dependable. This document is not an offer, invitation or any kind of representations to decide to buy or sell stock. Investment decisions taken based on this document is not the responsibility of PT Reliance Sekuritas Indonesia Tbk. PT Reliance Sekuritas Indonesia Tbk. reserves the right to change the contents of this document at any time without prior notice.