

IHSG



5680.80
16.321
0.29%

Vol (Mn): 8968
Val (Bn): 8357

LQ45



941.08
2.903
0.31%

Sector Indices	Last	Change	Change %
Agriculture	1818.60	(4.64)	(0.26)
Basic Industry	610.83	6.17	1.01
Consumer	2440.90	2.54	0.10
Finance	882.63	6.02	0.68
Infrastructure	1154.63	10.05	0.87
Manufacture	1474.45	0.32	0.02
Mining	1530.27	3.01	0.20
Misc Industry	1517.57	(19.16)	(1.26)
Property	510.11	1.79	0.35
Trade	914.62	(3.09)	(0.34)

Source: relitrade next G

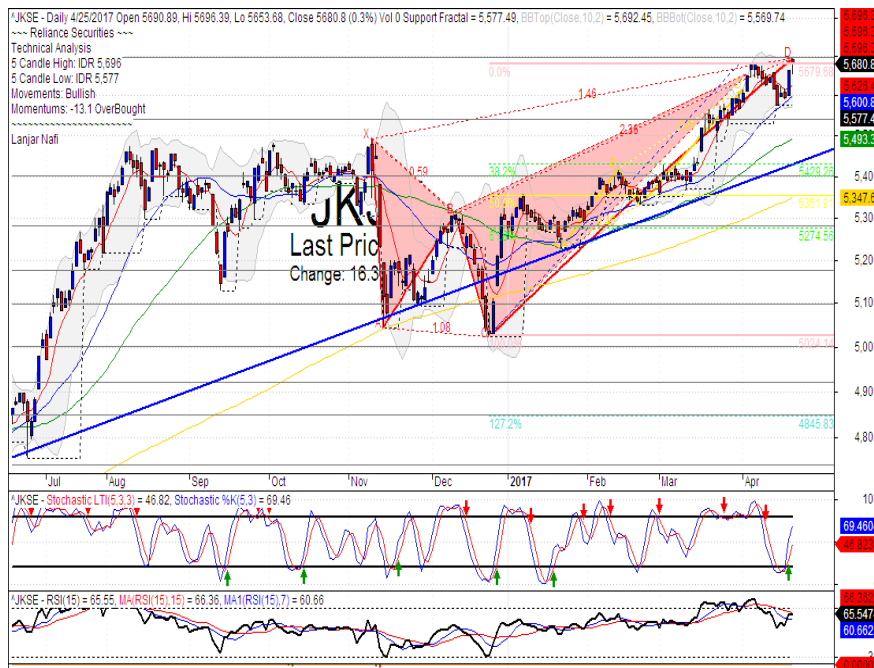
Most Active	Last	Change %	Freq
BABP	68	(2.9)	15,355
SRIL	310	1.3	11,020
TLKM	4,420	0.0	10,399
MDRN	79	27.4	9,212
ASII	9,025	(1.4)	8,184

Most Volume	Last	Change %	M share
MYRX	139	(1.4)	11,428
MDRN	79	27.4	7,836
BUMI	408	1.5	3,917
RIMO	164	(1.2)	2,741
LPKR	805	3.9	2,242

Most Value	Last	Change %	Rp Bil
TLKM	4,420	0.0	940.11
BBRI	13,125	1.5	498.70
BMRI	11,550	1.3	431.44
BBCA	17,400	(0.4)	386.62
EMTK	10,000	(4.8)	360.09

Source: relitrade next G

IHSG Technical Review



R3	6030
R2	5860
R1	5700
Last	5680.80
S1	5540
S2	5400
S3	5280

Comment:

Hanging man candlestick pattern. Moderate trading volume. Reversal signal

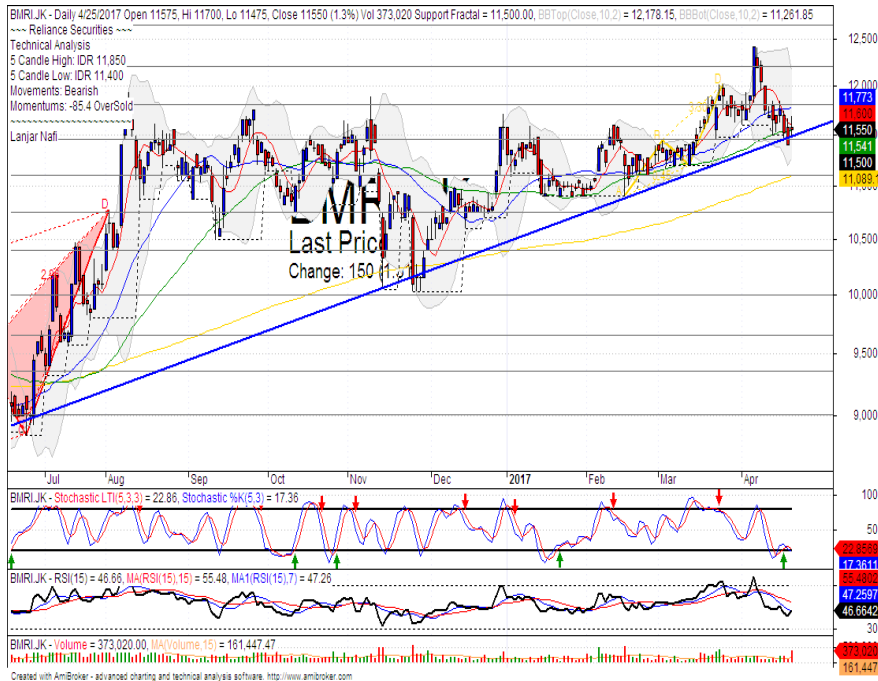
Stochastic, limited upside potential at middle oscillator.

RSI bearish reversal momentum at overbought oscillator.

Long term bullish trend movement.

Stop-loss if confirmations the negative signal at 5660. Corrections target until 5493 (MA50 support level).

BMRI



R3	12650
R2	12200
R1	11800
Last	11550
S1	11450
S2	11100
S3	10750

SPECULATIVE BUY

Comment:

Bullish homing pigeon candlestick pattern at bullish trend support level. Reversal signal.

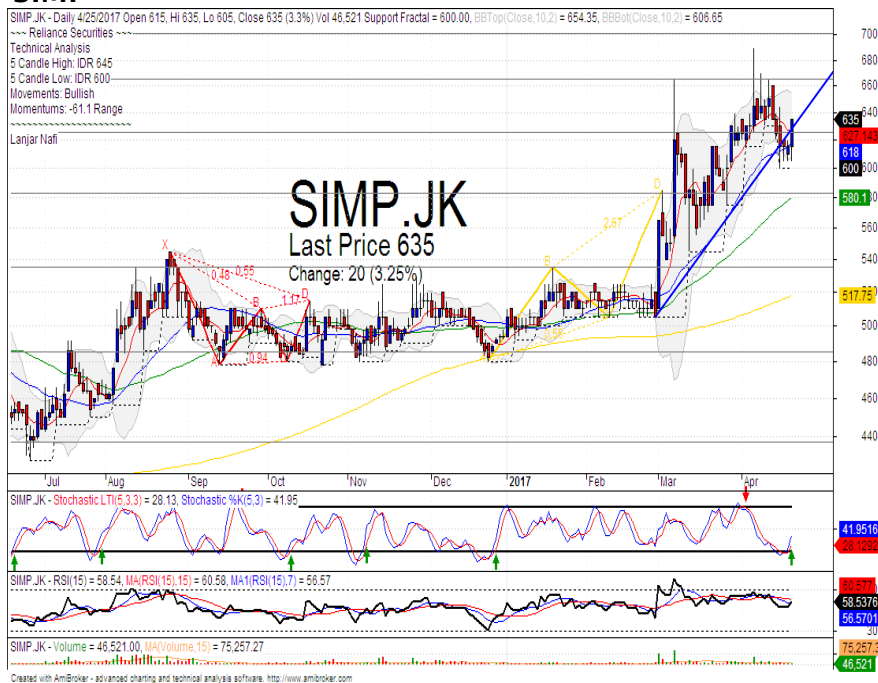
Stochastic, golden-cross at oversold oscillator.

RSI bullish reversal momentum at middle oscillator.

Long term bullish trend movement.

Upside target to upper Bollinger bands at 12200. Stop-loss if broke the bullish trend support level at 11400.

SIMP



R3	740
R2	700
R1	665
Last	635
S1	625
S2	580
S3	535

BUY

Comment:

Whipsaw at bullish trend support level. Moderate trading volume.

Stochastic golden-cross at oversold oscillator.

RSI Flat momentum at middle oscillator with limited upside potential.

Medium term bullish trend movement.

Upside target to 700. Stop-loss if broke the bullish trend support level at 610. Recommended buying price at 630.

TLKM



R3	5025
R2	4800
R1	4570
Last	4420
S1	4200
S2	3950
S3	3700

SELL

Comment:

Bearish meeting line candlestick pattern. Bearish reversal signal. Huge trading volume.

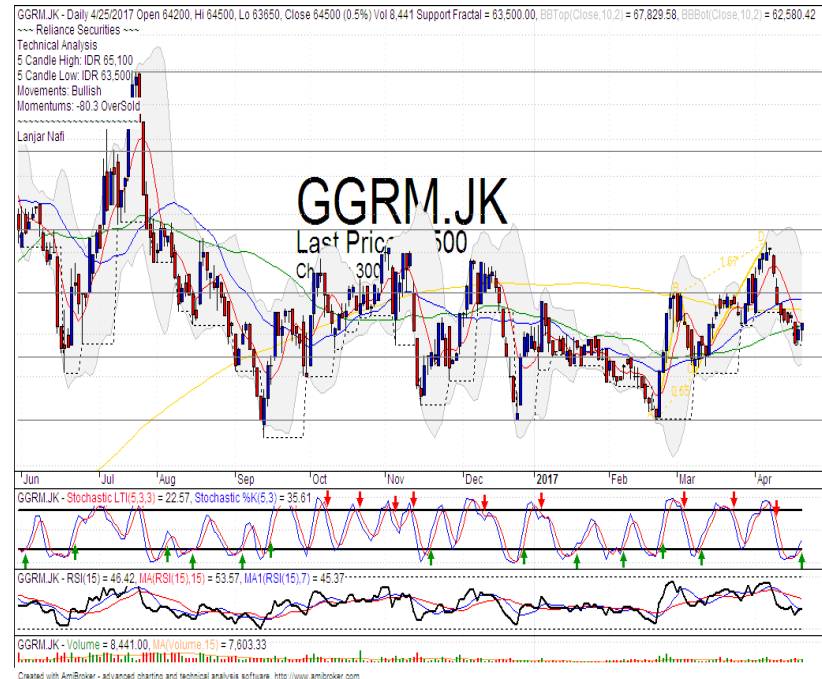
Stochastic limited upside after reached the overbought oscillator.

RSI bearish reversal momentum at overbought oscillator.

Medium term bullish trend movement.

Stop-loss if broke the support level at 4380. Corrections target 4180 until 3980 (Bearish butterfly corrections target).

GGRM



R3	73350
R2	69250
R1	66000
Last	64500
S1	62875
S2	60000
S3	56500

BUY

Comment:

Bullish harami confirmations pattern. Moderate trading volume reversal signal.

Stochastic golden-cross at oversold oscillator.

RSI consolidations at neat oversold oscillator.

Medium term bullish trend movement.

Upside target to upper Bollinger bands at 68000. Stop-loss if broke the MA50 and pulled back MA200 at 63600. Recommended buying price at 64600 and accumulations phase if broke MA200 at 65775.

Stocks	S2	S1	Closing Price	R1	R2	Technical Notes	Rec	Stop Loss	Rec Buy Prc	Target Price
Plantation										
AALI	13,000	14,000	14,500	14,900	15,850	Consolidations	W	14,000		
LSIP	1,250	1,300	1,370	1,405	1,545	Consolidations	W	1,350		
Mining										
INCO	1,965	2,120	2,150	2,300	2,500	Oversold	W	2,100		
Consumer										
UNVR	42,500	44,000	45,300	46,000	47,800	Overbought	PS	45,000		
INDF	7,250	7,900	8,100	8,500	9,125	Oversold	TB	7,800		8,500
KLBF	1,485	1,540	1,600	1,600	1,650	Flag pattern	TB	1,530		1,670
Trading										
ACES	870	920	930	970	1,030	Consolidations	TB	910		970
AKRA	6,100	6,350	6,600	6,600	7,000	Stoch dead-cross	PS	6,300		
UNTR	24,000	25,325	26,600	26,750	28,175	Consolidations	W	26,000		
Property & Construction										
LPCK	4,160	4,300	4,380	4,450	4,600	Broke the support level	TB	4,350		4,600
WIKA	1,990	2,200	2,360	2,400	2,600	Pulled back MA25	S	2,200		
BSDE	1,630	1,720	1,810	1,830	1,935	Consolidations	W	1,750		
WSKT	2,120	2,260	2,380	2,410	2,600	Reached the bearish trend line	PS	2,300		
ADHI	2,070	2,200	2,270	2,300	2,420	Consolidations	W	2,220		
Basic Industry & Chemical										
SMGR	8,150	8,725	8,975	9,350	9,900	Bullish kicker signal	B	8,850	8,900	9,500
CPIN	3,000	3,210	3,370	3,400	3,580	Bullish momentum	H	3,200		3,440
MAIN	1,080	1,180	1,235	1,300	1,400	Oversold	W	1,200		
INTP	14,600	15,500	16,300	16,350	17,500	Rebounded at MA50 support level	SB	16,000	16,300	17,200
Miscellaneous										
SRIL	270	288	310	316	350	Consolidations	SB	284		316
ASII	8,650	9,000	9,025	9,500	10,000	False break channeling trend	PS	8,900		
Finance										
BBTN	2,100	2,200	2,350	2,360	2,480	Consolidations	H	2,180		2,400
BMRI	11,100	11,450	11,550	11,800	12,200	Bullish homing pigeon	TB	11,400		12,400
BTPN	2,340	2,550	2,580	2,770	3,000	Bearish momentum	PS	2,540		
BJBR	1,750	1,915	2,040	2,140	2,210	Consolidations	W	2,000		
BBRI	12,350	13,000	13,125	13,500	14,275	Bullish momentum	H	13,000		13,500
Infrastructure										
TLKM	4,200	4,400	4,420	4,580	4,740	Bearish meeting line	S	4,380		
PGAS	2,200	2,360	2,500	2,550	2,800	Rectangle	SB	2,400		2,630

Source : Reliance Sekuritas Indonesia

Analyst Conclusions:

The index has forming the negative signal at resistance level.

Legend :

- B: BUY (allocate till 100% of the weighted capital to accumulate, higher than 50% upside probability)
- SB: SPECULATIVE BUY (allocate 25%-50% of the weighted capital to accumulate, 25%-50% upside probability)
- W: WAIT (wait for proper entry level, do the stop-loss if necessary)
- H: HOLD (hold the portfolio position, aim for the best price to distribute)
- PS: PARTIAL SELL (distribute 25%-50% part of the portfolio, 25%-50% downside probability)
- S: SELL (distribute till 100% of the portfolio, higher than 50% downside probability)
- TB: TRADING BUY (short term or intraday trading within a tight trading range. Highly speculative).

Ticker	Resistance	Price	Support	Weekly	Weekly	Indicator			Moving Average			
	Fractal	4/25/2017	Fractal	High	Low	Stochastic	RSI	B. Band	25 Days	50 Days	200 Days	
AALIJK	14,950	14,500	14,400	14,950	14,650	Neutral	Bearish	Neutral	Middle Bands	Under	Under	Under
ACESJK	920	930	880	935	910	Neutral	Bullish	Neutral	Middle Bands	Upper	Upper	Upper
ADHIJK	2,420	2,270	2,220	2,330	2,260	Neutral	Bearish	Neutral	Middle Bands	Under	Upper	Under
ADROJK	1,885	1,845	1,850	1,885	1,850	Oversold	Bullish	Neutral	Middle Bands	Upper	Upper	Upper
AISAJK	2,470	2,130	2,100	2,440	2,190	Oversold	Bearish	Neutral	Middle Bands	Under	Under	Upper
AKRAJK	6,750	6,600	6,350	6,625	6,550	Neutral	Bullish	Neutral	Middle Bands	Upper	Upper	Upper
ANTMJK	750	700	695	745	705	Oversold	Bearish	Neutral	Middle Bands	Under	Under	Under
APLNJK	240	212	208	226	216	Neutral	Bearish	Neutral	Middle Bands	Under	Under	Under
ASIIJK	8,925	9,025	8,350	9,350	8,525	Neutral	Bullish	Neutral	Middle Bands	Upper	Upper	Upper
ASRIJK	366	348	346	354	350	Oversold	Bearish	Neutral	Middle Bands	Under	Under	Under
BBCAJK	17,750	17,400	16,700	17,650	17,050	Neutral	Bullish	Neutral	Middle Bands	Upper	Upper	Upper
BBKPKJK	630	645	625	655	635	Oversold	Bullish	Neutral	Middle Bands	Upper	Upper	Upper
BBNIJK	6,700	6,200	6,350	6,375	6,250	Neutral	Bearish	Neutral	Middle Bands	Under	Under	Upper
BBRIJK	13,250	13,125	12,425	13,150	12,750	Neutral	Bullish	Neutral	Middle Bands	Upper	Upper	Upper
BBTNJK	2,390	2,350	2,140	2,360	2,290	Overbought	Bullish	Neutral	Upper Bands	Upper	Upper	Upper
BDMNJK	5,000	4,520	4,650	4,800	4,560	Oversold	Bullish	Neutral	Middle Bands	Under	Under	Upper
BHITJK	128	120	120	128	124	Neutral	Bearish	Oversold	Lower Bands	Under	Under	Under
BJBRJK	2,240	2,040	1,960	2,170	2,080	Neutral	Bearish	Neutral	Middle Bands	Under	Under	Upper
BJTMJK	840	700	615	700	665	Neutral	Bullish	Neutral	Middle Bands	Upper	Upper	Upper
BKSLJK	100	89	90	92	89	Oversold	Bullish	Neutral	Middle Bands	Under	Under	Under
BMRIJK	11,450	11,550	11,500	11,850	11,675	Neutral	Bearish	Neutral	Middle Bands	Under	Upper	Upper
BMTRJK	535	530	510	550	515	Neutral	Bullish	Neutral	Middle Bands	Upper	Under	Under
BSDEJK	1,900	1,810	1,750	1,840	1,775	Neutral	Bullish	Neutral	Middle Bands	Under	Under	Under
BTPNJK	2,780	2,580	2,540	2,630	2,610	Neutral	Bearish	Neutral	Middle Bands	Under	Under	Under
BWPTJK	394	320	332	394	334	Oversold	Bearish	Neutral	Lower Bands	Under	Under	Upper
CMNPJK	1,490	1,410	1,390	1,440	1,415	Neutral	Bullish	Neutral	Middle Bands	Under	Under	Under
CPINJK	3,400	3,370	3,180	3,370	3,230	Neutral	Bullish	Neutral	Upper Bands	Upper	Upper	Under
CSAPJK	464	452	454	456	454	Oversold	Bearish	Oversold	Lower Bands	Under	Under	Under
CTRAJK	1,295	1,300	1,080	1,320	1,265	Overbought	Bearish	Neutral	Middle Bands	Upper	Upper	Under
DILDJK	422	430	420	446	434	Neutral	Bearish	Neutral	Middle Bands	Upper	Under	Under
EXCLJK	3,310	3,190	2,900	3,200	3,010	Neutral	Bullish	Neutral	Middle Bands	Upper	Upper	Upper
GGRMJK	68,575	64,500	63,500	65,100	64,450	Neutral	Bullish	Neutral	Middle Bands	Under	Upper	Under
GIAAJK	396	368	356	396	376	Neutral	Bearish	Neutral	Middle Bands	Upper	Upper	Under
GJTLJK	1,120	1,060	1,025	1,095	1,050	Oversold	Bullish	Neutral	Middle Bands	Under	Under	Under
HEXAJK	4,600	4,360	4,100	4,600	4,520	Neutral	Bearish	Neutral	Middle Bands	Upper	Upper	Upper
HRUMJK	2,880	2,500	2,400	2,730	2,540	Oversold	Bullish	Neutral	Middle Bands	Under	Upper	Upper
ICBPJK	8,950	8,500	8,075	8,500	8,200	Overbought	Bullish	Neutral	Upper Bands	Upper	Upper	Under
IMASJK	1,200	1,160	1,130	1,185	1,150	Oversold	Bullish	Neutral	Middle Bands	Under	Under	Under
INCOJK	2,370	2,150	2,270	2,260	2,180	Oversold	Bearish	Oversold	Middle Bands	Under	Under	Under
INDFJK	8,075	8,100	7,925	8,125	8,000	Neutral	Bullish	Neutral	Upper Bands	Upper	Upper	Upper
INDYJK	805	695	690	730	700	Oversold	Bearish	Neutral	Middle Bands	Under	Under	Under
INTAJK	482	454	446	470	456	Oversold	Bullish	Overbought	Middle Bands	Upper	Upper	Upper
INTPJK	17,200	16,300	15,975	16,750	16,300	Oversold	Bullish	Neutral	Middle Bands	Under	Upper	Under
ITMGJK	20,350	19,100	19,425	20,350	19,375	Neutral	Bearish	Neutral	Middle Bands	Under	Upper	Upper
JFPAJK	1,665	1,555	1,510	1,575	1,545	Oversold	Bullish	Neutral	Middle Bands	Under	Under	Under
JSMRJK	4,700	4,460	4,620	4,690	4,490	Neutral	Bearish	Neutral	Lower Bands	Under	Under	Under
KUJAJK	322	332	290	340	330	Neutral	Bearish	Neutral	Upper Bands	Upper	Upper	Upper
KLBFJK	1,605	1,600	1,540	1,605	1,560	Neutral	Bullish	Neutral	Middle Bands	Upper	Upper	Upper
KRASJK	640	575	585	630	590	Oversold	Bearish	Neutral	Middle Bands	Under	Under	Under
LPCKJK	4,190	4,380	4,090	4,380	4,160	Neutral	Bullish	Neutral	Upper Bands	Upper	Under	Under
LPKRJK	780	805	735	815	760	Neutral	Bullish	Neutral	Upper Bands	Upper	Upper	Under
LPPFJK	13,875	13,450	13,225	13,675	13,300	Neutral	Bullish	Neutral	Middle Bands	Under	Under	Under
LSIPJK	1,505	1,370	1,370	1,405	1,390	Oversold	Bearish	Neutral	Middle Bands	Under	Under	Under
MAINJK	1,295	1,235	1,225	1,295	1,240	Oversold	Bearish	Neutral	Middle Bands	Under	Under	Under
MAPIJK	6,550	6,175	6,150	6,225	6,225	Oversold	Bullish	Neutral	Middle Bands	Upper	Upper	Upper
MASAJK	256	230	230	256	232	Neutral	Bearish	Neutral	Lower Bands	Under	Under	Under
MNCNJK	1,820	1,805	1,685	1,820	1,760	Neutral	Bullish	Neutral	Middle Bands	Upper	Upper	Under
MPPAJK	1,030	920	950	1,015	935	Oversold	Bearish	Oversold	Middle Bands	Under	Under	Under
MTLAJK	340	330	324	330	326	Neutral	Bullish	Neutral	Upper Bands	Upper	Upper	Upper
MYORJK	2,070	2,040	1,950	2,070	2,010	Neutral	Bullish	Neutral	Middle Bands	Under	Upper	Upper
PGASJK	2,560	2,500	2,360	2,530	2,420	Neutral	Bullish	Neutral	Middle Bands	Upper	Under	Under
PTBAJK	14,200	12,675	11,975	12,975	12,725	Neutral	Bearish	Neutral	Middle Bands	Upper	Upper	Upper
RALSJK	1,190	1,175	1,145	1,175	1,150	Neutral	Bullish	Neutral	Middle Bands	Upper	Under	Under
ROTIJK	1,655	1,640	1,540	1,670	1,625	Neutral	Bearish	Neutral	Middle Bands	Upper	Upper	Upper
SCMAJK	2,910	2,890	2,730	2,950	2,820	Neutral	Bullish	Neutral	Middle Bands	Upper	Upper	Upper
SCROJK	2,070	2,050	1,960	2,050	2,030	Overbought	Bullish	Neutral	Upper Bands	Upper	Upper	Upper
SIMPJK	690	635	600	645	620	Neutral	Bullish	Neutral	Middle Bands	Upper	Upper	Upper
SMCBJK	940	905	895	905	905	Neutral	Bullish	Neutral	Middle Bands	Under	Under	Under
SMGRJK	9,675	8,975	8,650	8,975	8,750	Neutral	Bullish	Neutral	Middle Bands	Under	Under	Under
SMRAJK	1,380	1,395	1,330	1,415	1,355	Neutral	Bullish	Neutral	Upper Bands	Upper	Upper	Under
SRILJK	392	310	300	316	306	Neutral	Bullish	Neutral	Middle Bands	Under	Under	Upper
SSIAJK	690	710	740	775	740	Oversold	Bearish	Neutral	Middle Bands	Upper	Upper	Upper
SSMSJK	1,725	1,640	1,630	1,720	1,670	Neutral	Bearish	Neutral	Lower Bands	Upper	Upper	Upper
TLKMJK	4,180	4,420	4,010	4,520	4,090	Neutral	Bullish	Overbought	Upper Bands	Upper	Upper	Upper
TOTLJK	820	795	795	820	810	Neutral	Bearish	Neutral	Middle Bands	Under	Under	Under
UNTRJK	29,200	26,600	26,500	28,475	26,925	Oversold	Bearish	Neutral	Middle Bands	Under	Upper	Upper
UNVRJK	44,000	45,300	44,900	45,600	45,350	Neutral	Bullish	Neutral	Middle Bands	Upper	Upper	Upper

Source : Reliance Research

Legend :

- Movement: Bullish and Bearish (Indicator Stochastic)
- Momentum: Oversold, Overbought and Neutral (Indicator RSI)
- Resistance Fractal: Strong Resistance
- Support Fractal: Strong Support
- Green: Good Conditions
- Red: Poor Conditions

HEAD OFFICE

Reliance Building

Jl. Pluit Sakti Raya No. 27AB,
Pluit
Jakarta 14450
T. +62 21 661 7768
F. +62 21 661 9884

RESEARCH DIVISION

Robertus Yanuar Hardy

robertus@reliance-securities.com

Rio Adrianus

rio.adrianus@reliance-securities.com

Lanjar Nafi Taulat I

lanjar@reliance-securities.com

Aji Setiawan

aji@reliance-securities.com

Shanti Dwi Jayanti

santi@reliance-securities.com

Head of Research

Research Analyst

Technical Research Analyst

Associate Research Analyst

Associate Research Analyst

EQUITY DIVISION

Jakarta- Pluit

Jl. Pluit Sakti Raya No. 27AB,
Pluit
Jakarta 14450
T. +62 21 661 7768
F. +62 21 661 9884

Bandung

Jl.Cisangkuy No.58
Bandung 40115
T. +62 22 721 8200
F. +62 22 721 9255

Surabaya - Gubeng

Jl. Bangka No. 22
Surabaya 60281
T. +62 31 501 1128
F. +62 31 503 3196

Makassar

Jl. Boto Lempangan No. 34 J
Makassar- Sulawesi Selatan
T. +62 411 3632388
F. +62 411 3614634

Jakarta - Sudirman

Menara Batavia Ground Floor
Jl.KH.Mas Mansyur Kav 126
Jakarta 10220
T. +62 21 57905455
F. +62 21 57950728

Tasikmalaya

Ruko Tasik Indah Plaza No.21
Jl. KHZ Mustofa No. 345
Tasikmalaya 46121
T. +62 265 345000
F. +62 265 345003

Surabaya - Diponegoro

Jl. Diponegoro No.26D
Surabaya 60261
T. +62 31 567 0388
F. +62 31 561 0528

Medan

Jl. Teuku Amir Hamzah No.40-O
Medan 20117
T. +62 61 6638592
F. +62 61 6638023

Jakarta - Kebon Jeruk

Plaza Kebon Jeruk
Jl.Raya Perjuangan Blok A/2
Jakarta 11530
T. +62 21 532 4074
F. +62 21 536 2157

Malang

Jl. Guntur No. 19
Malang 65112
T. +62 341 347 611
F. +62 341 347 615

Bali - Denpasar

Dewata Square Blok A3
Jl. Letda Tantular Renon
Denpasar 802361
T. +62 361 225099
F. +62 361 245099

Tangerang

Jl. Pahlawan Seribu Ruko BSD
Sektor 7 Blok RK kav. 9
Tangerang 15310
T. +62 21 5387495
F. +62 21 5387494

Pekanbaru

Jl. Jendral Sudirman No.73
Pekanbaru-Riau
T. +62 761 848414
F. +62 761 849456

Pontianak

Jl. MT Haryono No. 6
Pontianak 78121
T. +62 561 575674
F. +62 561 575670

Jakarta - Centro

Ruko Centro Residence Kav. 4-5
Tower C Lt. 1 No. 26-29
Jl. Macan, Daan Mogot
Jakarta 14450
T. +62 21 56945227
F. +62 21 56945226

Solo

Jl. Slamet Riyadi 330^a
Solo 57145
T. +62 271 736599
F. +62 271 733478

Balikpapan

Ruko Bukit Damai Indah
Blok I, No. 3, Rt.34
Jl. MT. Haryono, Gunung
Bahagia, Balikpapan Selatan
76114
T. +62 542 746313
F. +62 542 746317

IDX CORNER & INVESTMENT GALLERY

President University

Resto Plaza 1F - Jababeka
Education Park
Jl. Ki Hajar Dewantara Raya
Cikarang - Bekasi 17550
T. +62 21 89106030

Universitas Siliwangi Tasikmalaya

Jl. Siliwangi No. 24
Tasikmalaya 46151
T. +62 265 323685
F. +62 265 323534

Politeknik Kediri

Jl. Mayor Bismo No. 27
Kediri 64121
T. +62 354 683128
F. +62 354 683128

Universitas Muhammadiyah Sidoarjo

Jl. Majapahit 666 B
Sidoarjo, Jawa Timur
T. +62 31 8945444
F. +62 31 8949333

Universitas Tanjungpura Pontianak

Jl. Jendral Ahmad Yani
Pontianak 78124
T. +62 561 743465
F. +62 561 766840

Universitas Pesantren Tinggi Darul Ulum

Kompleks Pp Darul Ulu,
Peterongan
Jombang, Jawa Timur 60281
T. +62 321 873655
F. +62 321 875771

STIE "AUB" Surakarta

Jl. Mr. Sartono 97, Cengklik
Nusukan, Surakarta 57135
T. +62 271 854803
F. +62 271 853084

Universitas Surabaya

Jl. Raya Kalirungkut
Surabaya 60293
T. +62 31 298 1203
F. +62 31 298 1204

Universitas Muhammadiyah Gresik

Jl. Sumatra 101 GKB
Gresik 61121
T. +62 31 395 1414
F. +62 31 395 2585

Universitas Negeri Malang

Jl. Surabaya No. 6
Malang 65145
T. +62 341 585914
F. +62 341 55288

Universitas Muhammadiyah Malang

Jl. Raya Tlogomas 246
Malang 65144
T. +62 341 464318-9
F. +62 341 460782

FSEI IAIN Antasari

Jl. Ahmad Yani Km. 4,5
Banjarmasin
T. + 62 511 3265783

STIE Malangkececwara

Jl. Terusan Candi Kalasan
Malang 65142
T. +62 341 491813
F. +62 341 495619

STIESIA Surabaya

Jl. Menur Pumpungan 30
Surabaya
T. +62 31 5947505
F. +62 31 5932218

Universitas 17 Agustus 1945 Banyuwangi

Jl. Adi Sucipto 26
Banyuwangi, Jawa Timur
T. +62 333 419613
F. +62 333 419163

STIE Tri Bhakti

Jl. Teuku Umar No. 24
Cut Meutia Setiakawan,
Bekasi
T. +62 21 82429400,
82429500
F. +62 271 726156

Universitas Islam Kalimantan

Jl. Adiyaksa No. 2, Kayu
Tangi, Banjarmasin
T. + 62 511 3303871
F. + 62 511 3303871

STIKOM Bali

Jalan Puputan No. 86, Renon,
Denpasar
T. +62361 244445
F. +62361 264773

Universitas Muhammadiyah Pontianak

Fakultas Ekonomi UM
Pontianak
Jl. Ahmad Yani, No. 111,
Pontianak 78124
T. +62561 743465
F. +62561 766840

Universitas Negeri Makassar

Fakultas Ekonomi Gedung BT
Lt.2
Jl. A.P. Pettarani, Kampus
UNM, Gunungsari Baru
Makassar 90222
T. +62 411 889464 / 881244
F. +62 411 887604

STIE AAS Surakarta

Jl. Slamet Riyadi No. 361,
Kartasura, Surakarta
T. +62 271 726156
F. +62 271 726156

UPN "Veteran" Yogyakarta

Jl. Babarsari 2, Tambak Bayan
Yogyakarta
T. +62 274 485268
F. +62 274 487147

Disclaimer:

Information, opinions and recommendations contained in this document are presented by PT Reliance Sekuritas Indonesia Tbk. from sources that are considered reliable and dependable. This document is not an offer, invitation or any kind of representations to decide to buy or sell stock. Investment decisions taken based on this document is not the responsibility of PT Reliance Sekuritas Indonesia Tbk. PT Reliance Sekuritas Indonesia Tbk. reserves the right to change the contents of this document at any time without prior notice.