

IHSG



5726.53
45.734
0.81%

Vol (Mn): 6688
Val (Bn): 7520

LQ45



950.75
9.67
1.03%

Sector Indices	Last	Change	Change %
Agriculture	1823.78	5.18	0.28
Basic Industry	613.60	2.76	0.45
Consumer	2457.55	16.65	0.68
Finance	897.94	15.31	1.70
Infrastructure	1152.42	(2.22)	(0.19)
Manufacture	1482.05	7.59	0.51
Mining	1534.56	4.29	0.28
Misc Industry	1518.53	0.96	0.06
Property	509.66	(0.45)	(0.09)
Trade	929.36	14.74	1.59

Source: relitrade next G

Most Active	Last	Change %	Freq
BUMI	434	6.4	20,342
JPRS	145	(2.7)	7,895
KICI	120	(7.7)	6,856
MNCN	1,760	(2.5)	6,043
TLKM	4,400	(0.5)	5,707

Most Volume	Last	Change %	M share
BUMI	434	6.4	15,033
MYRX	139	0.0	13,345
DEWA	66	1.5	3,093
RIMO	163	(0.6)	2,683
MDRN	71	(10.1)	2,214

Most Value	Last	Change %	Rp Bil
BMRI	11,825	2.4	949.10
BUMI	434	6.4	650.70
TLKM	4,400	(0.5)	455.92
BBRI	13,225	0.8	416.86
ASII	9,025	0.0	305.59

Source: relitrade next G

IHSG Technical Review



R3	6200
R2	6030
R1	5860
Last	5726.53
S1	5700
S2	5540
S3	5400

Comment:

Consolidations at all time high and broke the resistance level.

Stochastic, limited upside potential at middle oscillator.

RSI reached at overbought oscillator.

Long term bullish trend movement.

Stop-loss if confirmations the false break the resistance level at 5680. Corrections potential until 5610.

BDMN



R3	5400
R2	5000
R1	4630
Last	4630
S1	4400
S2	4160
S3	3930
SPECULATIVE BUY	

Comment:

Confirmations the bullish counter attack candlestick pattern.

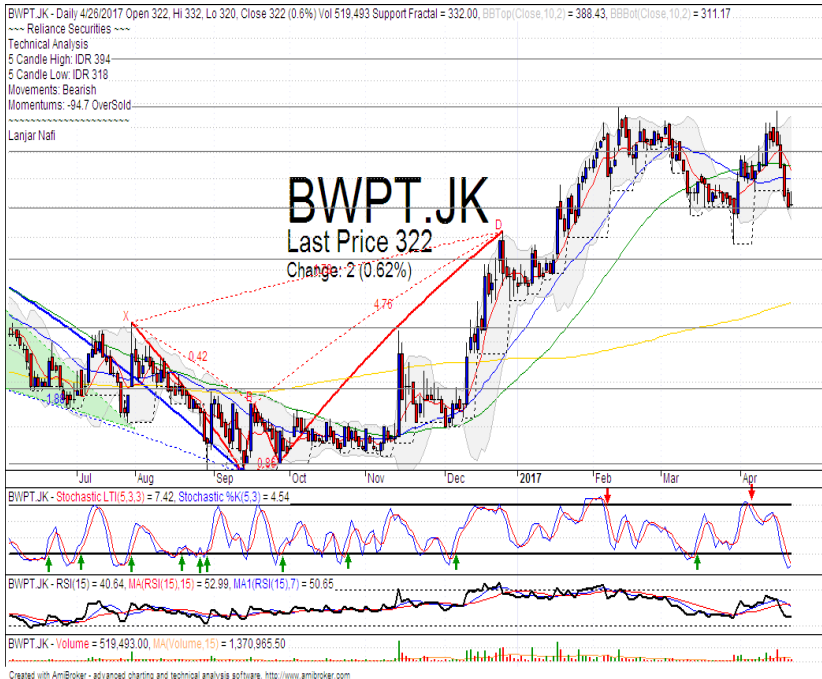
Stochastic, golden-cross at oversold oscillator.

RSI bullish reversal momentum at middle oscillator.

Long term bullish trend movement.

Upside target to upper Bollinger bands at 4840. Stop-loss if pulled back resistance level at 4600.

BWPT



R3	440
R2	396
R1	360
Last	322
S1	320
S2	286
S3	246
TRADING BUY	

Comment:

Bullish harami cross candlestick patter at support level. Reversal signal.

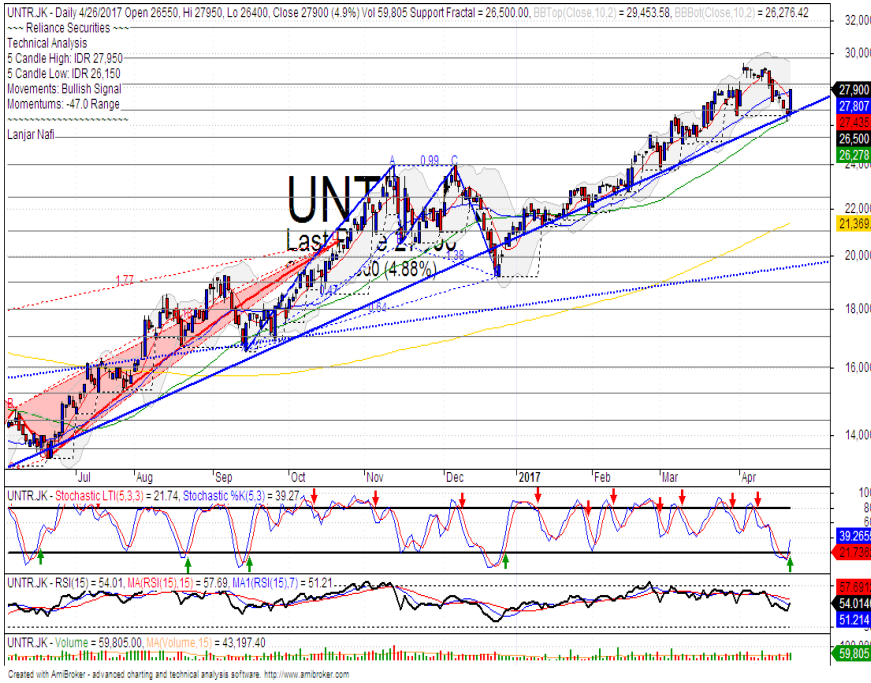
Stochastic golden-cross indications at oversold oscillator.

RSI bullish reversal momentum at near oversold oscillator.

Medium term bullish trend movement.

Upside target to 388 (Upper Bollinger bands resistance level). Stop-loss if broke the support level at 314.

UNTR



R3	31650
R2	29700
R1	28225
Last	27900
S1	26750
S2	25400
S3	24000
SPECULATIVE BUY	

Comment:

Bullish break away candlestick pattern and rebounded at bullish trend support level.

Stochastic golden-cross at oversold oscillator. broad upside potential.

RSI bullish reversal momentum at near oversold oscillator.

Long term bullish trend movement.

Upside target to 29500. Stop-loss if broke the support level at 26375).

ELSA



R3	535
R2	480
R1	426
Last	392
S1	382
S2	346
S3	316
SPECULATIVE BUY	

Comment:

Above the stomach candlestick pattern. Reversal signal at support level.

Stochastic golden-cross at oversold oscillator.

RSI consolidations at near oversold oscillator.

Medium term bullish trend movement.

Upside target to MA200 at 450. Stop-loss if broke the support level at 376.

Stocks	S2	S1	Closing Price	R1	R2	Technical Notes	Rec	Stop Loss	Rec Buy Prc	Target Price
Plantation										
AALI	13,000	14,000	14,375	14,900	15,850	Bearish momentum	W	14,000		
LSIP	1,250	1,300	1,365	1,405	1,545	Consolidations	W	1,350		
Mining										
INCO	1,965	2,120	2,150	2,300	2,500	Oversold	W	2,100		
Consumer										
UNVR	42,500	44,000	45,800	46,000	47,800	Overbought	PS	45,000		
INDF	7,250	7,900	8,125	8,500	9,125	Oversold	TB	7,800		8,500
KLBF	1,540	1,600	1,605	1,650	1,700	Flag pattern	B	1,530	1,600	1,670
Trading										
ACES	870	920	955	970	1,030	Consolidations	H	910		970
AKRA	6,350	6,600	6,700	7,000	7,300	Overbought	PS	6,500		
UNTR	25,325	26,750	27,900	28,175	29,750	Rebounded at MA50 support level	SB	26,000	27,800	29,750
Property & Construction										
LPCK	4,300	4,450	4,600	4,600	4,830	Bullish momentum	H	4,400		4,650
WIKA	1,990	2,200	2,330	2,400	2,600	Pulled back MA25	S	2,200		
BSDE	1,630	1,720	1,825	1,830	1,935	Stoch dead-cross	PS	1,750		
WSKT	2,120	2,260	2,380	2,410	2,600	Reached the bearish trend line	PS	2,300		
ADHI	2,070	2,200	2,270	2,300	2,420	Consolidations	W	2,220		
Basic Industry & Chemical										
SMGR	8,150	8,725	9,000	9,350	9,900	Bullish momentum	B	8,850	8,900	9,500
CPIN	3,000	3,210	3,340	3,400	3,580	Overbought	PS	3,200		3,440
MAIN	1,080	1,180	1,250	1,300	1,400	Stoch golden-cross	TB	1,200		1,400
INTP	15,500	16,350	16,725	17,500	18,425	Bullish momentum	H	16,500		17,500
Miscellaneous										
SRIL	270	288	306	316	350	Consolidations	TB	284		316
ASII	8,650	9,000	9,025	9,500	10,000	False break channeling trend	S	8,900		
Finance										
BBTN	2,100	2,200	2,330	2,360	2,480	Stoch dead-cross	PS	2,180		
BMRI	11,100	11,800	11,825	12,200	12,675	Bullish momentum	B	11,600	11,800	12,400
BTPN	2,340	2,550	2,590	2,770	3,000	Bearish momentum	PS	2,540		
BJBR	1,750	1,915	2,020	2,140	2,210	Consolidations	W	2,000		
BBRI	12,350	13,000	13,225	13,500	14,275	Overbought	H	13,000		13,500
Infrastructure										
TLKM	4,200	4,400	4,400	4,580	4,740	Bearish meeting line	S	4,380		
PGAS	2,200	2,360	2,490	2,550	2,800	Rectangle	SB	2,400		2,630

Source : Reliance Sekuritas Indonesia

Analyst Conclusions:

The index broke the resistance level with consolidations movement.

Legend :

- B: BUY (allocate till 100% of the weighted capital to accumulate, higher than 50% upside probability)
- SB: SPECULATIVE BUY (allocate 25%-50% of the weighted capital to accumulate, 25%-50% upside probability)
- W: WAIT (wait for proper entry level, do the stop-loss if necessary)
- H: HOLD (hold the portfolio position, aim for the best price to distribute)
- PS: PARTIAL SELL (distribute 25%-50% part of the portfolio, 25%-50% downside probability)
- S: SELL (distribute till 100% of the portfolio, higher than 50% downside probability)
- TB: TRADING BUY (short term or intraday trading within a tight trading range. Highly speculative).

Ticker	Resistance	Price	Support	Weekly	Weekly	Indicator			Moving Average			
	Fractal	4/26/2017	Fractal	High	Low	Stochastic	RSI	B. Band	25 Days	50 Days	200 Days	
AALIJK	14,950	14,375	14,400	14,950	14,575	Neutral	Bearish	Neutral	Middle Bands	Under	Under	Under
ACESJK	920	955	880	965	910	Neutral	Bullish	Overbought	Upper Bands	Upper	Upper	Upper
ADHIJK	2,420	2,270	2,220	2,320	2,260	Neutral	Bullish	Neutral	Middle Bands	Under	Upper	Under
ADROJK	1,885	1,820	1,850	1,885	1,845	Neutral	Bullish	Neutral	Middle Bands	Under	Upper	Upper
AISAJK	2,470	2,200	2,100	2,320	2,190	Neutral	Bullish	Neutral	Middle Bands	Under	Upper	Upper
AKRAJK	6,750	6,700	6,350	6,700	6,550	Neutral	Bullish	Neutral	Upper Bands	Upper	Upper	Upper
ANTMJK	750	700	695	725	705	Oversold	Bearish	Neutral	Middle Bands	Under	Under	Under
APLNJK	240	212	208	226	216	Neutral	Bearish	Neutral	Middle Bands	Under	Under	Under
ASIIJK	8,925	9,025	8,350	9,350	8,525	Neutral	Bullish	Neutral	Middle Bands	Upper	Upper	Upper
ASRIJK	366	350	346	360	350	Oversold	Bullish	Neutral	Middle Bands	Under	Under	Under
BBCAJK	17,750	18,000	16,700	18,000	17,050	Neutral	Bullish	Overbought	Upper Bands	Upper	Upper	Upper
BBKPK	630	640	625	655	635	Neutral	Bullish	Neutral	Middle Bands	Upper	Upper	Upper
BBNIJK	6,700	6,400	6,075	6,450	6,250	Neutral	Bullish	Neutral	Middle Bands	Under	Upper	Upper
BBRIJK	13,250	13,225	12,425	13,225	12,950	Neutral	Bullish	Neutral	Middle Bands	Upper	Upper	Upper
BBTNJK	2,390	2,330	2,140	2,360	2,320	Overbought	Bearish	Neutral	Middle Bands	Upper	Upper	Upper
BDMNJK	5,000	4,630	4,650	4,780	4,560	Oversold	Bullish	Neutral	Middle Bands	Under	Under	Upper
BHITJK	128	121	120	126	123	Neutral	Bearish	Neutral	Middle Bands	Under	Under	Under
BJBRJK	2,240	2,020	1,960	2,140	2,070	Neutral	Bearish	Neutral	Middle Bands	Under	Under	Upper
BJTMJK	840	700	645	720	665	Neutral	Bullish	Neutral	Middle Bands	Upper	Upper	Upper
BKSLJK	100	88	87	91	89	Neutral	Bullish	Neutral	Middle Bands	Under	Under	Under
BMRIJK	11,450	11,825	11,400	12,275	11,675	Neutral	Bullish	Neutral	Middle Bands	Upper	Upper	Upper
BMTRJK	535	530	510	550	515	Neutral	Bullish	Neutral	Middle Bands	Upper	Under	Under
BSDEJK	1,900	1,825	1,750	1,840	1,815	Overbought	Bearish	Neutral	Middle Bands	Under	Under	Under
BTPNJK	2,780	2,590	2,540	2,630	2,600	Neutral	Bearish	Neutral	Middle Bands	Under	Under	Under
BWPTJK	394	322	332	394	332	Oversold	Bearish	Neutral	Middle Bands	Under	Under	Upper
CMNPJK	1,490	1,395	1,390	1,440	1,405	Neutral	Bearish	Oversold	Lower Bands	Under	Under	Under
CPINJK	3,400	3,340	3,180	3,370	3,230	Overbought	Bullish	Neutral	Middle Bands	Upper	Upper	Under
CSAPJK	464	448	454	456	452	Oversold	Bearish	Oversold	Lower Bands	Under	Under	Under
CTRAJK	1,295	1,285	1,080	1,320	1,275	Neutral	Bearish	Neutral	Middle Bands	Upper	Upper	Under
DILDJK	422	426	420	446	434	Neutral	Bearish	Neutral	Middle Bands	Upper	Under	Under
EXCLJK	3,310	3,230	2,900	3,230	3,010	Neutral	Bullish	Neutral	Upper Bands	Upper	Upper	Upper
GGRMJK	68,575	65,950	63,500	65,950	64,450	Neutral	Bullish	Neutral	Middle Bands	Upper	Upper	Upper
GIAAJK	396	376	356	390	376	Neutral	Bearish	Neutral	Middle Bands	Upper	Upper	Under
GJTLJK	1,120	1,020	1,025	1,080	1,050	Neutral	Bullish	Neutral	Middle Bands	Under	Under	Under
HEXAJK	4,600	4,400	4,100	4,590	4,470	Neutral	Bearish	Neutral	Middle Bands	Upper	Upper	Upper
HRUMJK	2,880	2,490	2,400	2,670	2,530	Oversold	Bullish	Neutral	Middle Bands	Under	Upper	Upper
ICBPJK	8,950	8,525	8,075	8,550	8,200	Overbought	Bullish	Neutral	Upper Bands	Upper	Upper	Under
IMASJK	1,200	1,150	1,130	1,160	1,150	Neutral	Bullish	Neutral	Middle Bands	Under	Under	Under
INCOJK	2,370	2,150	2,270	2,240	2,170	Oversold	Bullish	Oversold	Middle Bands	Under	Under	Under
INDFJK	8,075	8,125	7,925	8,175	8,000	Neutral	Bullish	Neutral	Upper Bands	Upper	Upper	Upper
INDYJK	805	700	690	730	700	Oversold	Bullish	Neutral	Middle Bands	Under	Under	Under
INTAJK	482	462	446	466	456	Neutral	Bullish	Overbought	Middle Bands	Upper	Upper	Upper
INTPJK	17,200	16,725	15,975	16,725	16,300	Neutral	Bullish	Neutral	Middle Bands	Upper	Upper	Upper
ITMGJK	20,350	19,500	18,450	20,350	19,375	Neutral	Bearish	Neutral	Middle Bands	Under	Upper	Upper
JFPAJK	1,665	1,555	1,510	1,580	1,545	Neutral	Bullish	Neutral	Middle Bands	Under	Under	Under
JSMRJK	4,700	4,460	4,620	4,690	4,490	Oversold	Bearish	Neutral	Middle Bands	Under	Under	Under
KUJAJK	322	330	326	340	332	Neutral	Bearish	Neutral	Middle Bands	Upper	Upper	Upper
KLBFJK	1,605	1,605	1,540	1,610	1,560	Neutral	Bullish	Neutral	Middle Bands	Upper	Upper	Upper
KRASJK	640	580	585	620	590	Oversold	Bullish	Neutral	Middle Bands	Under	Under	Under
LPCKJK	4,190	4,600	4,090	4,600	4,160	Neutral	Bullish	Neutral	Upper Bands	Upper	Upper	Under
LPKRJK	780	805	735	815	770	Overbought	Bullish	Neutral	Upper Bands	Upper	Upper	Under
LPPFJK	13,875	14,000	13,025	14,000	13,300	Neutral	Bullish	Neutral	Upper Bands	Upper	Upper	Under
LSIPJK	1,405	1,365	1,370	1,405	1,380	Oversold	Bearish	Neutral	Middle Bands	Under	Under	Under
MAINJK	1,295	1,250	1,225	1,295	1,240	Oversold	Bullish	Neutral	Middle Bands	Under	Upper	Under
MAPIJK	6,550	6,175	6,150	6,225	6,200	Neutral	Bullish	Neutral	Middle Bands	Upper	Upper	Upper
MASAJK	256	234	230	256	232	Neutral	Bearish	Neutral	Middle Bands	Under	Under	Upper
MNCNJK	1,820	1,760	1,685	1,820	1,760	Neutral	Bullish	Neutral	Middle Bands	Under	Upper	Under
MPPAJK	1,030	950	950	985	935	Oversold	Bullish	Oversold	Middle Bands	Under	Under	Under
MTLAJK	340	326	324	330	326	Neutral	Bearish	Neutral	Middle Bands	Upper	Upper	Upper
MYORJK	2,070	2,050	1,950	2,070	2,010	Neutral	Bullish	Neutral	Middle Bands	Under	Upper	Upper
PGASJK	2,560	2,490	2,360	2,520	2,420	Neutral	Bullish	Neutral	Middle Bands	Upper	Under	Under
PTBAJK	14,200	12,675	12,300	12,975	12,725	Neutral	Bearish	Neutral	Middle Bands	Upper	Upper	Upper
RALSJK	1,190	1,270	1,145	1,275	1,150	Neutral	Bullish	Neutral	Upper Bands	Upper	Upper	Upper
ROTIJK	1,655	1,640	1,540	1,670	1,635	Neutral	Bearish	Neutral	Middle Bands	Upper	Upper	Upper
SCMAJK	2,910	2,890	2,730	2,950	2,820	Neutral	Bullish	Neutral	Middle Bands	Upper	Upper	Upper
SCROJK	2,070	2,050	1,960	2,060	2,040	Overbought	Bullish	Neutral	Middle Bands	Upper	Upper	Upper
SIMPJK	690	630	600	645	620	Neutral	Bullish	Neutral	Middle Bands	Upper	Upper	Upper
SMCBJK	940	900	895	905	905	Neutral	Bearish	Neutral	Middle Bands	Under	Under	Under
SMGRJK	9,675	9,000	8,650	9,025	8,750	Neutral	Bullish	Neutral	Middle Bands	Upper	Under	Under
SMRAJK	1,380	1,400	1,330	1,415	1,365	Neutral	Bullish	Neutral	Middle Bands	Upper	Upper	Under
SRILJK	392	306	300	316	312	Neutral	Bearish	Neutral	Middle Bands	Under	Under	Upper
SSIAJK	690	730	740	770	735	Oversold	Bullish	Neutral	Middle Bands	Upper	Upper	Upper
SSMSJK	1,725	1,700	1,630	1,720	1,670	Neutral	Bearish	Neutral	Middle Bands	Upper	Upper	Upper
TLKMJK	4,180	4,400	4,010	4,520	4,120	Neutral	Bullish	Neutral	Middle Bands	Upper	Upper	Upper
TOTLJK	820	800	795	820	805	Neutral	Bearish	Neutral	Middle Bands	Under	Under	Under
UNTRJK	29,200	27,900	26,500	27,950	26,925	Neutral	Bullish	Neutral	Middle Bands	Upper	Upper	Upper
UNVRJK	44,000	45,800	44,500	45,800	45,350	Neutral	Bullish	Neutral	Middle Bands	Upper	Upper	Upper

Source : Reliance Research

Legend :

- Movement: Bullish and Bearish (Indicator Stochastic)
- Momentum: Oversold, Overbought and Neutral (Indicator RSI)
- Resistance Fractal: Strong Resistance
- Support Fractal: Strong Support
- Green: Good Conditions
- Red: Poor Conditions

HEAD OFFICE

Reliance Building

Jl. Pluit Sakti Raya No. 27AB,
Pluit
Jakarta 14450
T. +62 21 661 7768
F. +62 21 661 9884

RESEARCH DIVISION

Robertus Yanuar Hardy

robertus@reliance-securities.com

Rio Adrianus

rio.adrianus@reliance-securities.com

Lanjar Nafi Taulat I

lanjar@reliance-securities.com

Aji Setiawan

aji@reliance-securities.com

Shanti Dwi Jayanti

santi@reliance-securities.com

Head of Research

Research Analyst

Technical Research Analyst

Associate Research Analyst

Associate Research Analyst

EQUITY DIVISION

Jakarta- Pluit

Jl. Pluit Sakti Raya No. 27AB,
Pluit
Jakarta 14450
T. +62 21 661 7768
F. +62 21 661 9884

Bandung

Jl.Cisangkuy No.58
Bandung 40115
T. +62 22 721 8200
F. +62 22 721 9255

Surabaya - Gubeng

Jl. Bangka No. 22
Surabaya 60281
T. +62 31 501 1128
F. +62 31 503 3196

Makassar

Jl. Boto Lempangan No. 34 J
Makassar- Sulawesi Selatan
T. +62 411 3632388
F. +62 411 3614634

Jakarta - Sudirman

Menara Batavia Ground Floor
Jl.KH.Mas Mansyur Kav 126
Jakarta 10220
T. +62 21 57905455
F. +62 21 57950728

Tasikmalaya

Ruko Tasik Indah Plaza No.21
Jl. KHZ Mustofa No. 345
Tasikmalaya 46121
T. +62 265 345000
F. +62 265 345003

Surabaya - Diponegoro

Jl. Diponegoro No.26D
Surabaya 60261
T. +62 31 567 0388
F. +62 31 561 0528

Medan

Jl. Teuku Amir Hamzah No.40-O
Medan 20117
T. +62 61 6638592
F. +62 61 6638023

Jakarta - Kebon Jeruk

Plaza Kebon Jeruk
Jl.Raya Perjuangan Blok A/2
Jakarta 11530
T. +62 21 532 4074
F. +62 21 536 2157

Malang

Jl. Guntur No. 19
Malang 65112
T. +62 341 347 611
F. +62 341 347 615

Bali - Denpasar

Dewata Square Blok A3
Jl. Letda Tantular Renon
Denpasar 802361
T. +62 361 225099
F. +62 361 245099

Tangerang

Jl. Pahlawan Seribu Ruko BSD
Sektor 7 Blok RK kav. 9
Tangerang 15310
T. +62 21 5387495
F. +62 21 5387494

Pekanbaru

Jl. Jendral Sudirman No.73
Pekanbaru-Riau
T. +62 761 848414
F. +62 761 849456

Pontianak

Jl. MT Haryono No. 6
Pontianak 78121
T. +62 561 575674
F. +62 561 575670

Jakarta - Centro

Ruko Centro Residence Kav. 4-5
Tower C Lt. 1 No. 26-29
Jl. Macan, Daan Mogot
Jakarta 14450
T. +62 21 56945227
F. +62 21 56945226

Solo

Jl. Slamet Riyadi 330^a
Solo 57145
T. +62 271 736599
F. +62 271 733478

Balikpapan

Ruko Bukit Damai Indah
Blok I, No. 3, Rt.34
Jl. MT. Haryono, Gunung
Bahagia, Balikpapan Selatan
76114
T. +62 542 746313
F. +62 542 746317

IDX CORNER & INVESTMENT GALLERY**President University**

Resto Plaza 1F - Jababeka
Education Park
Jl. Ki Hajar Dewantara Raya
Cikarang - Bekasi 17550
T. +62 21 89106030

**Universitas Siliwangi
Tasikmalaya**

Jl. Siliwangi No. 24
Tasikmalaya 46151
T. +62 265 323685
F. +62 265 323534

Politeknik Kediri

Jl. Mayor Bismo No. 27
Kediri 64121
T. +62 354 683128
F. +62 354 683128

**Universitas Muhammadiyah
Sidoarjo**

Jl. Majapahit 666 B
Sidoarjo, Jawa Timur
T. +62 31 8945444
F. +62 31 8949333

**Universitas Tanjungpura
Pontianak**

Jl. Jendral Ahmad Yani
Pontianak 78124
T. +62 561 743465
F. +62 561 766840

**Universitas Pesantren Tinggi
Darul Ulum**

Kompleks Pp Darul Ulu,
Peterongan
Jombang, Jawa Timur 60281
T. +62 321 873655
F. +62 321 875771

STIE "AUB" Surakarta

Jl. Mr. Sartono 97, Cengklik
Nusukan, Surakarta 57135
T. +62 271 854803
F. +62 271 853084

Universitas Surabaya

Jl. Raya Kalirungkut
Surabaya 60293
T. +62 31 298 1203
F. +62 31 298 1204

**Universitas Muhammadiyah
Gresik**

Jl. Sumatra 101 GKB
Gresik 61121
T. +62 31 395 1414
F. +62 31 395 2585

Universitas Negeri Malang

Jl. Surabaya No. 6
Malang 65145
T. +62 341 585914
F. +62 341 55288

**Universitas Muhammadiyah
Malang**

Jl. Raya Tlogomas 246
Malang 65144
T. +62 341 464318-9
F. +62 341 460782

FSEI IAIN Antasari

Jl. Ahmad Yani Km. 4,5
Banjarmasin
T. + 62 511 3265783

STIE Malangkececwara

Jl. Terusan Candi Kalasan
Malang 65142
T. +62 341 491813
F. +62 341 495619

STIESIA Surabaya

Jl. Menur Pumpungan 30
Surabaya
T. +62 31 5947505
F. +62 31 5932218

**Universitas 17 Agustus
1945 Banyuwangi**

Jl. Adi Sucipto 26
Banyuwangi, Jawa Timur
T. +62 333 419613
F. +62 333 419163

STIE Tri Bhakti

Jl. Teuku Umar No. 24
Cut Meutia Setiakawan,
Bekasi
T. +62 21 82429400,
82429500
F. +62 271 726156

**Universitas Islam
Kalimantan**

Jl. Adiyaksa No. 2, Kayu
Tangi, Banjarmasin
T. + 62 511 3303871
F. + 62 511 3303871

STIKOM Bali

Jalan Puputan No. 86, Renon,
Denpasar
T. +62361 244445
F. +62361 264773

**Universitas Muhammadiyah
Pontianak**

Fakultas Ekonomi UM
Pontianak
Jl. Ahmad Yani, No. 111,
Pontianak 78124
T. +62561 743465
F. +62561 766840

**Universitas Negeri
Makassar**

Fakultas Ekonomi Gedung BT
Lt.2
Jl. A.P. Pettarani, Kampus
UNM, Gunungsari Baru
Makassar 90222
T. +62 411 889464 / 881244
F. +62 411 887604

STIE AAS Surakarta

Jl. Slamet Riyadi No. 361,
Kartasura, Surakarta
T. +62 271 726156
F. +62 271 726156

UPN "Veteran" Yogyakarta

Jl. Babarsari 2, Tambak Bayan
Yogyakarta
T. +62 274 485268
F. +62 274 487147

Disclaimer:

Information, opinions and recommendations contained in this document are presented by PT Reliance Sekuritas Indonesia Tbk. from sources that are considered reliable and dependable. This document is not an offer, invitation or any kind of representations to decide to buy or sell stock. Investment decisions taken based on this document is not the responsibility of PT Reliance Sekuritas Indonesia Tbk. PT Reliance Sekuritas Indonesia Tbk. reserves the right to change the contents of this document at any time without prior notice.