

IHSG



5707.03
-19.502
-0.34%

Vol (Mn): 10914
Val (Bn): 7449

LQ45



946.09
-4.66
-0.49%

Sector Indices	Last	Change	Change %
Agriculture	1819.04	(4.73)	(0.26)
Basic Industry	610.83	(2.77)	(0.45)
Consumer	2463.51	5.96	0.24
Finance	888.47	(9.48)	(1.07)
Infrastructure	1148.50	(3.91)	(0.34)
Manufacture	1482.11	0.06	0.00
Mining	1546.57	12.01	0.78
Misc Industry	1514.52	(4.01)	(0.26)
Property	508.28	(1.39)	(0.27)
Trade	926.18	(3.18)	(0.34)

Source: relitrade next G

Most Active	Last	Change %	Freq
BAPA	134	(0.7)	22,645
BUMI	454	4.6	14,408
INPC	97	2.1	14,247
LMAS	76	(2.6)	6,435
BBCA	17,525	(2.6)	5,317

Most Volume	Last	Change %	M share
MYRX	137	(1.4)	22,368
BUMI	454	4.6	9,849
RIMO	155	(4.9)	2,603
BRMS	77	(2.5)	1,967
DEWA	66	0.0	1,622

Most Value	Last	Change %	Rp Bil
INDF	8,450	4.0	535.26
BUMI	454	4.6	440.80
TLKM	4,370	(0.7)	344.49
BMRI	11,725	(0.8)	313.11
MYRX	137	(1.4)	309.06

Source: relitrade next G

IHSG Technical Review



R3	6200
R2	6030
R1	5860
Last	5707.03
S1	5700
S2	5540
S3	5400

Comment:

Consolidations at all time high and broke the resistance level.

Stochastic, limited upside potential at middle oscillator.

RSI reached at overbought oscillator.

Long term bullish trend movement.

Stop-loss if confirmations the false break the resistance level at 5680. Corrections potential until 5610.

BBRI



R3	14750
R2	14000
R1	13200
Last	13000
S1	12425
S2	11725
S3	11125

SELL

Comment:
 Triple top formations with bearish separating line candlestick pattern. Reversal signal.

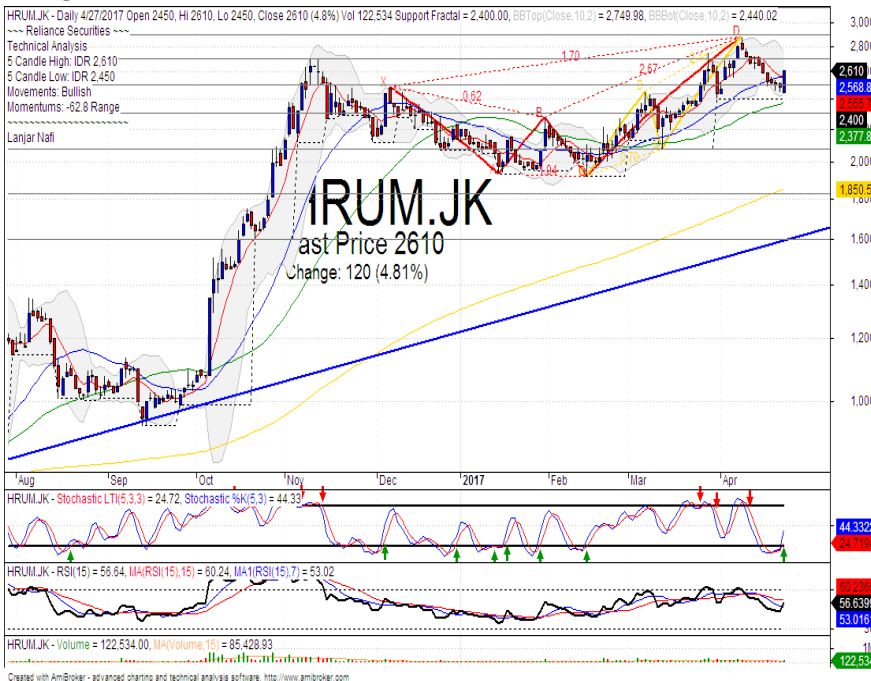
Stochastic, dead-cross at overbought oscillator.

RSI bearish consolidations momentum at middle oscillator.

Long term bullish trend movement.

Stop-loss if broke the MA25 support level. Corrections potential until 12450 (MA50 support level).

HRUM



R3	3120
R2	2890
R1	2700
Last	2610
S1	2500
S2	2300
S3	2070

SPECULATIVE BUY

Comment:
 Bullish break away and false break MA25 support level. Reversal signal.

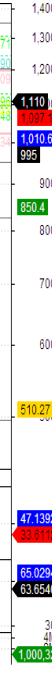
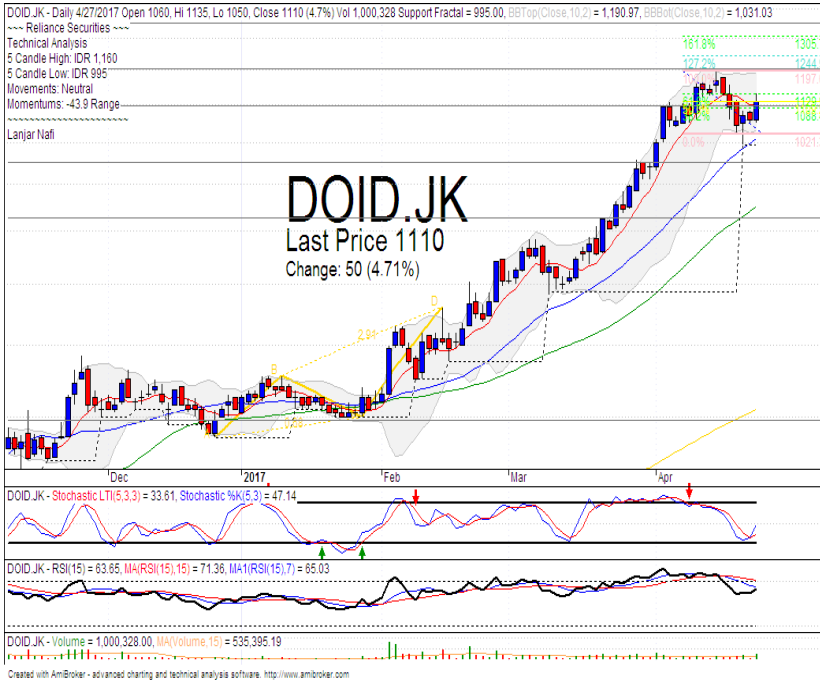
Stochastic golden-cross at oversold oscillator.

RSI bullish reversal momentum at middle oscillator. limited upside.

Long term bullish trend movement.

Upside target to 2770 (Upper Bollinger bands resistance level). Stop-loss if broke the support level at 2470.

DOID



R3	1480
R2	1350
R1	1200
Last	1110
S1	1100
S2	950
S3	830
SPECULATIVE BUY	

Comment:

Rebounded at MA25 support level. EW formations. Huge trading volume.

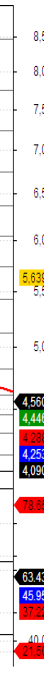
Stochastic golden-cross at oversold oscillator. Broad upside potential.

RSI consolidations momentum at middle oscillator.

Long term bullish trend movement.

Upside target to ideal target of wave 5 at 1305. Stop-loss if broke the support level at 1080.

LPCK



R3	5400
R2	5100
R1	4610
Last	4560
S1	4450
S2	4320
S3	4160
PARTIAL SELL	

Comment:

Touching the bearish trend resistance level. Distributions signal.

Stochastic dead-cross indications at overbought oscillator. Broad downside potential.

RSI bearish reversal momentum at overbought oscillator.

Long term bullish trend movement.

Stop-loss if broke the support level at 4420. Corrections target to 4170.

Stocks	S2	S1	Closing Price	R1	R2	Technical Notes	Rec	Stop Loss	Rec Buy Prc	Target Price
Plantation										
AALI	13,000	14,000	14,450	14,900	15,850	Bullish harami	TB	14,000		15,000
LSIP	1,250	1,300	1,365	1,405	1,545	Oversold	W	1,350		
Mining										
INCO	1,965	2,120	2,170	2,300	2,500	Stoch golden-cross	TB	2,100		2,300
Consumer										
UNVR	42,500	44,000	45,750	46,000	47,800	Overbought	PS	45,000		
INDF	7,250	7,900	8,450	8,500	9,125	Reached the resistance level	H	8,200		8,500
KLBF	1,540	1,600	1,595	1,650	1,700	Flag pattern	H	1,580		1,670
Trading										
ACES	870	920	945	970	1,030	Pulled back upper bollinger bands	PS	910		
AKRA	6,350	6,600	6,850	7,000	7,300	Overbought	PS	6,700		
UNTR	25,325	26,750	27,250	28,175	29,750	Rebounded at MA50 support level	TB	26,000		29,750
Property & Construction										
LPCK	4,300	4,450	4,560	4,600	4,830	Pulled back bearish trend	PS	4,550		
WIKA	1,990	2,200	2,380	2,400	2,600	Touching the MA50 resistance	S	2,340		
BSDE	1,630	1,720	1,800	1,830	1,935	Stoch dead-cross	S	1,750		
WSKT	2,120	2,260	2,400	2,410	2,600	Reached the bearish trend line	S	2,300		
ADHI	2,070	2,200	2,300	2,300	2,420	Consolidations	W	2,270		
Basic Industry & Chemical										
SMGR	8,150	8,725	8,825	9,350	9,900	Consolidations	H	8,700		9,500
CPIN	3,000	3,210	3,280	3,400	3,580	Pulled back bearish trend	S	3,250		
MAIN	1,080	1,180	1,245	1,300	1,400	Stoch golden-cross	TB	1,200		1,400
INTP	15,500	16,350	17,075	17,500	18,425	Bullish momentum	H	16,800		17,500
Miscellaneous										
SRIL	270	288	304	316	350	Consolidations	W	284		
ASII	8,650	9,000	9,000	9,500	10,000	Stoch dead-cross	S	8,900		
Finance										
BBTN	2,100	2,200	2,330	2,360	2,480	Stoch dead-cross	PS	2,180		
BMRI	11,100	11,800	11,725	12,200	12,675	Bullish momentum	B	11,600	11,800	12,400
BTPN	2,340	2,550	2,590	2,770	3,000	Oversold	W	2,540		
BJBR	1,750	1,915	2,030	2,140	2,210	Consolidations	W	2,000		
BBRI	12,350	13,000	13,000	13,500	14,275	Bearish separating line	PS	12,950		
Infrastructure										
TLKM	3,950	4,200	4,370	4,400	4,570	Bearish meeting line	S	4,350		
PGAS	2,200	2,360	2,470	2,550	2,800	Pulled back bearish trend	H	2,450		2,550

Source : Reliance Sekuritas Indonesia

Analyst Conclusions:

The index broke the resistance level with consolidations movement.

Legend :

- B: BUY (allocate till 100% of the weighted capital to accumulate, higher than 50% upside probability)
- SB: SPECULATIVE BUY (allocate 25%-50% of the weighted capital to accumulate, 25%-50% upside probability)
- W: WAIT (wait for proper entry level, do the stop-loss if necessary)
- H: HOLD (hold the portfolio position, aim for the best price to distribute)
- PS: PARTIAL SELL (distribute 25%-50% part of the portfolio, 25%-50% downside probability)
- S: SELL (distribute till 100% of the portfolio, higher than 50% downside probability)
- TB: TRADING BUY (short term or intraday trading within a tight trading range. Highly speculative).

HEAD OFFICE

Reliance Building

Jl. Pluit Sakti Raya No. 27AB,
Pluit
Jakarta 14450
T. +62 21 661 7768
F. +62 21 661 9884

RESEARCH DIVISION

Robertus Yanuar Hardy

robertus@reliance-securities.com

Rio Adrianus

rio.adrianus@reliance-securities.com

Lanjar Nafi Taulat I

lanjar@reliance-securities.com

Aji Setiawan

aji@reliance-securities.com

Shanti Dwi Jayanti

santi@reliance-securities.com

Head of Research

Research Analyst

Technical Research Analyst

Associate Research Analyst

Associate Research Analyst

EQUITY DIVISION

Jakarta- Pluit

Jl. Pluit Sakti Raya No. 27AB,
Pluit
Jakarta 14450
T. +62 21 661 7768
F. +62 21 661 9884

Bandung

Jl.Cisangkuy No.58
Bandung 40115
T. +62 22 721 8200
F. +62 22 721 9255

Surabaya - Gubeng

Jl. Bangka No. 22
Surabaya 60281
T. +62 31 501 1128
F. +62 31 503 3196

Makassar

Jl. Boto Lempangan No. 34 J
Makassar- Sulawesi Selatan
T. +62 411 3632388
F. +62 411 3614634

Jakarta - Sudirman

Menara Batavia Ground Floor
Jl.KH.Mas Mansyur Kav 126
Jakarta 10220
T. +62 21 57905455
F. +62 21 57950728

Tasikmalaya

Ruko Tasik Indah Plaza No.21
Jl. KHZ Mustofa No. 345
Tasikmalaya 46121
T. +62 265 345000
F. +62 265 345003

Surabaya - Diponegoro

Jl. Diponegoro No.26D
Surabaya 60261
T. +62 31 567 0388
F. +62 31 561 0528

Medan

Jl. Teuku Amir Hamzah No.40-O
Medan 20117
T. +62 61 6638592
F. +62 61 6638023

Jakarta - Kebon Jeruk

Plaza Kebon Jeruk
Jl.Raya Perjuangan Blok A/2
Jakarta 11530
T. +62 21 532 4074
F. +62 21 536 2157

Malang

Jl. Guntur No. 19
Malang 65112
T. +62 341 347 611
F. +62 341 347 615

Bali - Denpasar

Dewata Square Blok A3
Jl. Letda Tantular Renon
Denpasar 802361
T. +62 361 225099
F. +62 361 245099

Tangerang

Jl. Pahlawan Seribu Ruko BSD
Sektor 7 Blok RK kav. 9
Tangerang 15310
T. +62 21 5387495
F. +62 21 5387494

Pekanbaru

Jl. Jendral Sudirman No.73
Pekanbaru-Riau
T. +62 761 848414
F. +62 761 849456

Pontianak

Jl. MT Haryono No. 6
Pontianak 78121
T. +62 561 575674
F. +62 561 575670

Jakarta - Centro

Ruko Centro Residence Kav. 4-5
Tower C Lt. 1 No. 26-29
Jl. Macan, Daan Mogot
Jakarta 14450
T. +62 21 56945227
F. +62 21 56945226

Solo

Jl. Slamet Riyadi 330^a
Solo 57145
T. +62 271 736599
F. +62 271 733478

Balikpapan

Ruko Bukit Damai Indah
Blok I, No. 3, Rt.34
Jl. MT. Haryono, Gunung
Bahagia, Balikpapan Selatan
76114
T. +62 542 746313
F. +62 542 746317

IDX CORNER & INVESTMENT GALLERY**President University**

Resto Plaza 1F - Jababeka
Education Park
Jl. Ki Hajar Dewantara Raya
Cikarang - Bekasi 17550
T. +62 21 89106030

**Universitas Siliwangi
Tasikmalaya**

Jl. Siliwangi No. 24
Tasikmalaya 46151
T. +62 265 323685
F. +62 265 323534

Politeknik Kediri

Jl. Mayor Bismo No. 27
Kediri 64121
T. +62 354 683128
F. +62 354 683128

**Universitas Muhammadiyah
Sidoarjo**

Jl. Majapahit 666 B
Sidoarjo, Jawa Timur
T. +62 31 8945444
F. +62 31 8949333

**Universitas Tanjungpura
Pontianak**

Jl. Jendral Ahmad Yani
Pontianak 78124
T. +62 561 743465
F. +62 561 766840

**Universitas Pesantren Tinggi
Darul Ulum**

Kompleks Pp Darul Ulu,
Peterongan
Jombang, Jawa Timur 60281
T. +62 321 873655
F. +62 321 875771

STIE "AUB" Surakarta

Jl. Mr. Sartono 97, Cengklik
Nusukan, Surakarta 57135
T. +62 271 854803
F. +62 271 853084

Universitas Surabaya

Jl. Raya Kalirungkut
Surabaya 60293
T. +62 31 298 1203
F. +62 31 298 1204

**Universitas Muhammadiyah
Gresik**

Jl. Sumatra 101 GKB
Gresik 61121
T. +62 31 395 1414
F. +62 31 395 2585

Universitas Negeri Malang

Jl. Surabaya No. 6
Malang 65145
T. +62 341 585914
F. +62 341 55288

**Universitas Muhammadiyah
Malang**

Jl. Raya Tlogomas 246
Malang 65144
T. +62 341 464318-9
F. +62 341 460782

FSEI IAIN Antasari

Jl. Ahmad Yani Km. 4,5
Banjarmasin
T. + 62 511 3265783

STIE Malangkececwara

Jl. Terusan Candi Kalasan
Malang 65142
T. +62 341 491813
F. +62 341 495619

STIESIA Surabaya

Jl. Menur Pumpungan 30
Surabaya
T. +62 31 5947505
F. +62 31 5932218

**Universitas 17 Agustus
1945 Banyuwangi**

Jl. Adi Sucipto 26
Banyuwangi, Jawa Timur
T. +62 333 419613
F. +62 333 419163

STIE Tri Bhakti

Jl. Teuku Umar No. 24
Cut Meutia Setiakawan,
Bekasi
T. +62 21 82429400,
82429500
F. +62 271 726156

**Universitas Islam
Kalimantan**

Jl. Adiyaksa No. 2, Kayu
Tangi, Banjarmasin
T. + 62 511 3303871
F. + 62 511 3303871

STIKOM Bali

Jalan Puputan No. 86, Renon,
Denpasar
T. +62361 244445
F. +62361 264773

**Universitas Muhammadiyah
Pontianak**

Fakultas Ekonomi UM
Pontianak
Jl. Ahmad Yani, No. 111,
Pontianak 78124
T. +62561 743465
F. +62561 766840

**Universitas Negeri
Makassar**

Fakultas Ekonomi Gedung BT
Lt.2
Jl. A.P. Pettarani, Kampus
UNM, Gunungsari Baru
Makassar 90222
T. +62 411 889464 / 881244
F. +62 411 887604

STIE AAS Surakarta

Jl. Slamet Riyadi No. 361,
Kartasura, Surakarta
T. +62 271 726156
F. +62 271 726156

UPN "Veteran" Yogyakarta

Jl. Babarsari 2, Tambak Bayan
Yogyakarta
T. +62 274 485268
F. +62 274 487147

Disclaimer:

Information, opinions and recommendations contained in this document are presented by PT Reliance Sekuritas Indonesia Tbk. from sources that are considered reliable and dependable. This document is not an offer, invitation or any kind of representations to decide to buy or sell stock. Investment decisions taken based on this document is not the responsibility of PT Reliance Sekuritas Indonesia Tbk. PT Reliance Sekuritas Indonesia Tbk. reserves the right to change the contents of this document at any time without prior notice.