

IHSG



5685.30
-21.73
-0.38%

Vol (Mn): 4464
Val (Bn): 3166

LQ45



940.76
-5.33
-0.56%

Sector Indices	Last	Change	Change %
Agriculture	1839.38	20.34	1.11
Basic Industry	609.50	(1.32)	(0.22)
Consumer	2433.79	(29.72)	(1.22)
Finance	891.91	3.45	0.39
Infrastructure	1143.42	(5.08)	(0.44)
Manufacture	1469.05	(13.06)	(0.89)
Mining	1529.12	(17.45)	(1.14)
Misc Industry	1506.11	(8.41)	(0.56)
Property	505.55	(2.72)	(0.54)
Trade	923.10	(3.08)	(0.33)

Source: relitrade next G

Most Active	Last	Change %	Freq
INDY	900	20.0	13,026
BUMI	448	(1.3)	8,233
DOID	1,100	(0.9)	6,266
BIPI	108	8.0	5,738
TRAM	108	0.9	5,465

Most Volume	Last	Change %	M share
MYRX	139	1.5	13,362
BUMI	448	(1.3)	4,822
BIPI	108	8.0	4,359
INDY	900	20.0	2,917
TRAM	108	0.9	2,865

Most Value	Last	Change %	Rp Bil
TLKM	4,370	0.0	547.74
ASII	8,950	(0.6)	261.68
INDY	900	20.0	248.41
BMRI	11,700	(0.2)	244.94
BBCA	17,750	1.3	243.92

Source: relitrade next G

IHSG Technical Review



R3	6030
R2	5860
R1	5700
Last	5685.30
S1	5540
S2	5400
S3	5285

Comment:
Bearish homing pigeon candlestick pattern confirmations.

Stochastic, dead-cross at overbought oscillator.

RSI reached at overbought oscillator.

Long term bullish trend movement.

Stop-loss if confirmations the false break the resistance level at 5680. Corrections potential until 5610.

AKRA



R3	7675
R2	7300
R1	7000
Last	6775
S1	6625
S2	6350
S3	6100
SELL	

Comment:

Bearish harami candlestick pattern after reached the upper Bollinger bands. Reversal signal.

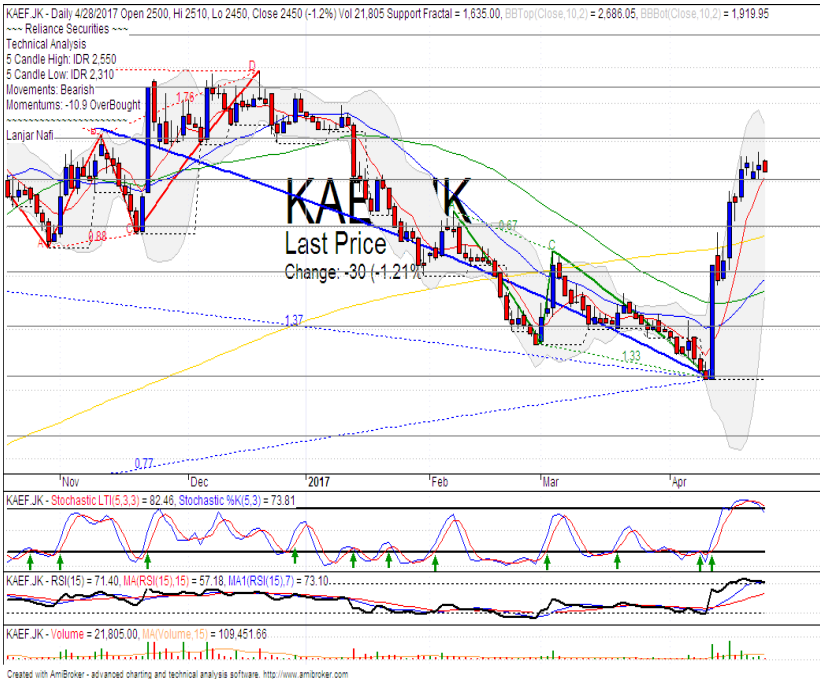
Stochastic, dead-cross at overbought oscillator.

RSI bearish consolidations momentum at near overbought oscillator.

Long term bullish trend movement.

Stop-loss if broke the support level at 6600. Corrections potential until 6350 (support level).

KAEF



R3	3200
R2	2890
R1	2600
Last	2450
S1	2400
S2	2190
S3	2010
SELL	

Comment:

Bearish engulfing after consolidations at overbought momentum. Reversal signal.

Stochastic dead-cross at overbought oscillator.

RSI bearish reversal momentum from overbought oscillator.

Short term bullish trend movement.

Stop-loss if broke the support level at 2380. Corrections potential until MA200 at 2160.

ICBP



R3	9450
R2	9100
R1	8775
Last	8775
S1	8325
S2	8075
S3	7750
SELL	

Comment:

Shooting star candlestick pattern. Huge trading volume. Reversal signal.

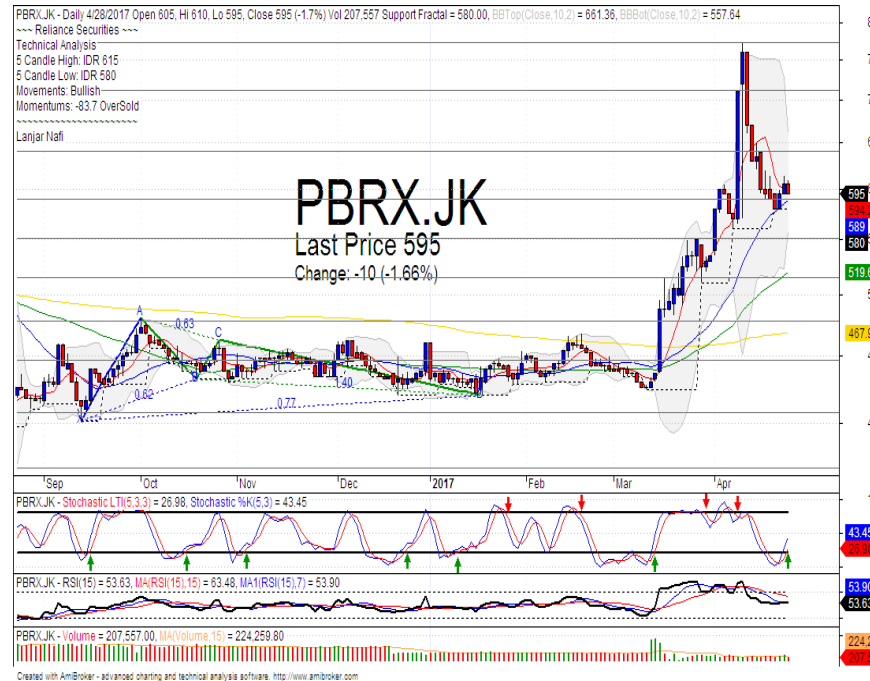
Stochastic dead-cross at overbought oscillator. Broad downside potential.

RSI reached the overbought momentum.

Long term bearish trend movement.

Stop-loss if false breaks confirmations at 8650. Corrections target until fractal support level at 8075.

PBRX



R3	770
R2	710
R1	640
Last	595
S1	585
S2	550
S3	515
TRADING BUY	

Comment:

Rebounded at MA25 support level. Reversal signal.

Stochastic golden-cross confirmations at oversold oscillator.

RSI consolidations momentum at middle oscillator.

Medium term bullish trend movement.

Upside target to upper Bollinger bands at 660. Stop-loss if broke the MA25 support level at 580.

Stocks	S2	S1	Closing Price	R1	R2	Technical Notes	Rec	Stop Loss	Rec Buy Prc	Target Price
Plantation										
AALI	13,000	14,000	14,400	14,900	15,850	Consolidations	TB	14,000		15,000
LSIP	1,250	1,300	1,395	1,405	1,545	Bullish kicker signal	TB	1,350		1,470
Mining										
INCO	1,965	2,120	2,220	2,300	2,500	Stoch golden-cross	SB	2,100	2,210	2,300
Consumer										
UNVR	42,500	44,000	44,500	46,000	47,800	Stoch dead-cross	S	44,200		
INDF	7,250	7,900	8,375	8,500	9,125	Double top	S	8,200		
KLBF	1,540	1,600	1,585	1,650	1,700	Flag pattern	H	1,580		1,670
Trading										
ACES	870	920	935	970	1,030	Stoch dead-cross	S	910		
AKRA	6,350	6,600	6,775	7,000	7,300	Bearish harami	S	6,700		
UNTR	25,325	26,750	26,900	28,175	29,750	Consolidations	W	26,000		
Property & Construction										
LPCK	4,300	4,450	4,480	4,600	4,830	Pulled back bearish trend	S	4,550		
WIKA	1,990	2,200	2,370	2,400	2,600	Touching the MA50 resistance	S	2,340		
BSDE	1,630	1,720	1,790	1,830	1,935	Stoch dead-cross	S	1,750		
WSKT	2,120	2,260	2,390	2,410	2,600	Pulled back bearish trend	S	2,300		
ADHI	2,070	2,200	2,260	2,300	2,420	Consolidations	W	2,270		
Basic Industry & Chemical										
SMGR	8,150	8,725	8,825	9,350	9,900	Consolidations	W	8,700		
CPIN	2,850	3,000	3,190	3,210	3,400	Break out support level	S	3,250		
MAIN	1,080	1,180	1,220	1,300	1,400	Consolidations	TB	1,200		1,400
INTP	15,500	16,350	16,950	17,500	18,425	Pulled back upper bollinger bands	PS	16,800		
Miscellaneous										
SRIL	270	288	302	316	350	Consolidations	W	284		
ASII	8,250	8,650	8,950	9,000	9,500	Pulled back resistance level	S	8,900		
Finance										
BBTN	2,100	2,200	2,300	2,360	2,480	Stoch dead-cross	S	2,180		
BMRI	11,100	11,800	11,700	12,200	12,675	Bullish momentum	B	11,600	11,800	12,400
BTPN	2,340	2,550	2,610	2,770	3,000	Stoch golden-cross	TB	2,540		2,770
BJBR	1,750	1,915	2,010	2,140	2,210	Consolidations	W	2,000		
BBRI	11,725	12,350	12,900	13,000	13,500	Triple top formations	S	12,950		
Infrastructure										
TLKM	3,950	4,200	4,370	4,400	4,570	Stoch dead-cross	S	4,350		
PGAS	2,200	2,360	2,430	2,550	2,800	Pulled back bearish trend	W	2,380		

Source : Reliance Sekuritas Indonesia

Analyst Conclusions:

The index broke the resistance level with consolidations movement.

Legend :

- B: BUY (allocate till 100% of the weighted capital to accumulate, higher than 50% upside probability)
- SB: SPECULATIVE BUY (allocate 25%-50% of the weighted capital to accumulate, 25%-50% upside probability)
- W: WAIT (wait for proper entry level, do the stop-loss if necessary)
- H: HOLD (hold the portfolio position, aim for the best price to distribute)
- PS: PARTIAL SELL (distribute 25%-50% part of the portfolio, 25%-50% downside probability)
- S: SELL (distribute till 100% of the portfolio, higher than 50% downside probability)
- TB: TRADING BUY (short term or intraday trading within a tight trading range. Highly speculative).

Ticker	Resistance	Price	Support	Weekly	Weekly	Indicator			Moving Average			
	Fractal	4/28/2017	Fractal	High	Low	Stochastic	RSI	B. Band	25 Days	50 Days	200 Days	
AALIJK	14,950	14,400	14,400	14,650	14,575	Oversold	Bullish	Neutral	Middle Bands	Under	Under	Under
ACESJK	965	935	880	965	910	Neutral	Bearish	Neutral	Middle Bands	Upper	Upper	Upper
ADHIJK	2,420	2,260	2,220	2,330	2,290	Neutral	Bullish	Neutral	Middle Bands	Under	Under	Under
ADROJK	1,885	1,775	1,850	1,850	1,845	Neutral	Bearish	Neutral	Lower Bands	Under	Upper	Upper
AISAJK	2,280	2,220	2,100	2,280	2,200	Neutral	Bullish	Neutral	Middle Bands	Upper	Upper	Upper
AKRAJK	6,750	6,775	6,350	6,900	6,625	Overbought	Bearish	Neutral	Middle Bands	Upper	Upper	Upper
ANTMJK	750	695	695	715	700	Oversold	Bullish	Neutral	Middle Bands	Under	Under	Under
APLNJK	240	210	208	218	212	Oversold	Bearish	Neutral	Middle Bands	Under	Under	Under
ASIIJK	9,350	8,950	8,350	9,350	9,050	Neutral	Bearish	Neutral	Middle Bands	Upper	Upper	Upper
ASRIJK	360	348	346	360	350	Neutral	Bullish	Neutral	Middle Bands	Under	Under	Under
BBCAJK	18,000	17,750	16,700	18,000	17,500	Neutral	Bearish	Neutral	Middle Bands	Upper	Upper	Upper
BBKPJK	655	630	625	655	635	Neutral	Bearish	Neutral	Middle Bands	Under	Upper	Under
BBNIJK	6,450	6,375	6,075	6,450	6,250	Neutral	Bullish	Neutral	Middle Bands	Under	Under	Upper
BBRIJK	13,225	12,900	12,425	13,225	12,975	Neutral	Bearish	Neutral	Middle Bands	Under	Upper	Upper
BBTNJK	2,390	2,300	2,140	2,360	2,320	Neutral	Bearish	Neutral	Middle Bands	Under	Upper	Upper
BDMNJK	5,000	4,860	4,420	5,025	4,560	Neutral	Bullish	Neutral	Middle Bands	Upper	Upper	Upper
BHITJK	128	120	120	125	121	Oversold	Bullish	Oversold	Middle Bands	Under	Under	Under
BJBRJK	2,240	2,010	2,000	2,090	2,030	Neutral	Bearish	Neutral	Middle Bands	Under	Under	Upper
BJTMJK	720	685	645	720	665	Neutral	Bearish	Neutral	Middle Bands	Upper	Upper	Upper
BKSLJK	100	88	87	90	89	Neutral	Bullish	Neutral	Middle Bands	Under	Under	Under
BMRIJK	12,275	11,700	11,400	12,275	11,675	Neutral	Bullish	Neutral	Middle Bands	Under	Upper	Upper
BMTRJK	550	535	510	550	535	Neutral	Bearish	Neutral	Middle Bands	Upper	Upper	Under
BSDEJK	1,840	1,790	1,840	1,750	1,815	Neutral	Bearish	Neutral	Middle Bands	Under	Under	Under
BTPNJK	2,780	2,610	2,580	2,650	2,600	Oversold	Bullish	Neutral	Middle Bands	Under	Under	Under
BWPTJK	394	314	318	352	326	Oversold	Bullish	Neutral	Middle Bands	Under	Under	Upper
CMNPJK	1,490	1,400	1,390	1,420	1,395	Oversold	Bearish	Neutral	Middle Bands	Under	Under	Under
CPINJK	3,400	3,190	3,180	3,370	3,280	Neutral	Bearish	Neutral	Middle Bands	Under	Under	Under
CSAPJK	464	464	448	468	452	Neutral	Bullish	Neutral	Upper Bands	Upper	Under	Under
CTRAJK	1,320	1,280	1,080	1,320	1,290	Neutral	Bearish	Neutral	Middle Bands	Upper	Upper	Under
DILDJK	422	440	420	442	434	Neutral	Bullish	Neutral	Upper Bands	Upper	Upper	Under
EXCLJK	3,310	3,210	2,900	3,270	3,030	Overbought	Bearish	Neutral	Middle Bands	Upper	Upper	Upper
GGRMJK	68,575	66,400	63,500	67,525	64,450	Neutral	Bullish	Neutral	Middle Bands	Upper	Upper	Upper
GIAAJK	396	368	366	380	376	Neutral	Bullish	Neutral	Middle Bands	Upper	Upper	Under
GJTLJK	1,120	1,035	1,020	1,070	1,040	Oversold	Bearish	Neutral	Middle Bands	Under	Under	Under
HEXAJK	4,600	4,400	4,350	4,550	4,420	Neutral	Bearish	Neutral	Middle Bands	Upper	Upper	Upper
HRUMJK	2,880	2,570	2,520	2,450	2,530	Neutral	Bullish	Neutral	Middle Bands	Under	Upper	Upper
ICBPJK	8,950	8,775	8,075	8,950	8,425	Overbought	Bearish	Neutral	Upper Bands	Upper	Upper	Under
IMASJK	1,200	1,150	1,130	1,160	1,150	Neutral	Bullish	Neutral	Middle Bands	Under	Under	Under
INCOJK	2,370	2,220	2,140	2,250	2,170	Neutral	Bullish	Neutral	Middle Bands	Under	Under	Under
INDFJK	8,075	8,375	7,925	8,525	8,100	Overbought	Bullish	Overbought	Upper Bands	Upper	Upper	Upper
INDYJK	805	900	690	925	705	Neutral	Bullish	Overbought	Upper Bands	Upper	Upper	Upper
INTAJK	482	464	446	472	456	Neutral	Bullish	Overbought	Middle Bands	Upper	Upper	Upper
INTPJK	17,200	16,950	15,975	17,075	16,300	Neutral	Bullish	Neutral	Middle Bands	Upper	Upper	Upper
ITMGJK	19,850	19,125	18,450	19,850	19,375	Neutral	Bullish	Neutral	Middle Bands	Under	Upper	Upper
JFPAJK	1,580	1,465	1,510	1,580	1,520	Neutral	Bearish	Neutral	Lower Bands	Under	Under	Under
JSMRJK	4,700	4,640	4,400	4,700	4,490	Neutral	Bullish	Neutral	Middle Bands	Upper	Under	Under
KUJAJK	340	330	326	340	330	Neutral	Bearish	Neutral	Middle Bands	Upper	Upper	Upper
KLBFJK	1,605	1,585	1,540	1,615	1,585	Overbought	Bearish	Neutral	Middle Bands	Upper	Upper	Under
KRASJK	640	580	570	605	590	Neutral	Bullish	Neutral	Middle Bands	Under	Under	Under
LPCKJK	4,190	4,480	4,090	4,750	4,240	Overbought	Bearish	Neutral	Middle Bands	Upper	Upper	Under
LPKRJK	815	790	735	815	775	Overbought	Bearish	Neutral	Middle Bands	Upper	Upper	Under
LPPFJK	13,875	14,600	13,025	15,150	13,400	Neutral	Bullish	Neutral	Upper Bands	Upper	Upper	Under
LSIPJK	1,405	1,395	1,355	1,420	1,380	Neutral	Bullish	Neutral	Middle Bands	Under	Under	Under
MAINJK	1,265	1,220	1,225	1,265	1,240	Neutral	Bullish	Neutral	Middle Bands	Under	Under	Under
MAPIJK	6,550	6,325	6,125	6,475	6,200	Neutral	Bullish	Neutral	Middle Bands	Upper	Upper	Upper
MASAJK	256	232	226	244	232	Neutral	Bullish	Neutral	Middle Bands	Under	Under	Under
MNCNJK	1,820	1,825	1,720	1,825	1,800	Neutral	Bullish	Neutral	Middle Bands	Upper	Upper	Under
MPPAJK	1,030	945	915	960	935	Neutral	Bullish	Neutral	Middle Bands	Under	Under	Under
MTLAJK	330	326	324	330	326	Neutral	Bearish	Neutral	Middle Bands	Upper	Upper	Upper
MYORJK	2,070	2,030	1,950	2,140	2,010	Neutral	Bearish	Neutral	Middle Bands	Under	Under	Upper
PGASJK	2,520	2,430	2,360	2,520	2,440	Neutral	Bearish	Neutral	Middle Bands	Under	Under	Under
PTBAJK	14,200	12,675	12,300	13,075	12,725	Neutral	Bullish	Neutral	Middle Bands	Upper	Upper	Upper
RALSJK	1,190	1,275	1,075	1,320	1,150	Overbought	Bullish	Neutral	Middle Bands	Upper	Upper	Upper
ROTIJK	1,655	1,640	1,540	1,670	1,655	Neutral	Bullish	Neutral	Middle Bands	Upper	Upper	Upper
SCMAJK	2,950	2,860	2,730	2,950	2,900	Neutral	Bearish	Neutral	Middle Bands	Upper	Upper	Upper
SGROJK	2,070	2,120	1,960	2,150	2,040	Overbought	Bearish	Overbought	Upper Bands	Upper	Upper	Upper
SIMPJK	690	635	605	650	620	Neutral	Bearish	Neutral	Middle Bands	Upper	Upper	Upper
SMCBJK	940	900	895	905	905	Neutral	Bearish	Neutral	Lower Bands	Under	Under	Under
SMGRJK	9,025	8,825	8,650	9,025	8,825	Neutral	Bearish	Neutral	Middle Bands	Under	Under	Under
SMRAJK	1,415	1,360	1,330	1,415	1,400	Neutral	Bearish	Neutral	Middle Bands	Upper	Under	Under
SRILJK	392	302	300	314	306	Neutral	Bearish	Neutral	Middle Bands	Under	Under	Upper
SSIAJK	690	730	695	760	735	Neutral	Bullish	Neutral	Middle Bands	Upper	Upper	Upper
SSMSJK	1,725	1,750	1,625	1,750	1,670	Neutral	Bullish	Neutral	Upper Bands	Upper	Upper	Upper
TLKMJK	4,520	4,370	4,010	4,520	4,400	Neutral	Bearish	Neutral	Middle Bands	Upper	Upper	Upper
TOTLJK	820	790	795	820	800	Oversold	Bearish	Neutral	Middle Bands	Under	Under	Under
UNTRJK	27,950	26,900	26,150	27,950	26,925	Neutral	Bullish	Neutral	Middle Bands	Under	Upper	Upper
UNVRJK	44,000	44,500	44,500	45,800	45,400	Overbought	Bearish	Neutral	Lower Bands	Under	Upper	Upper

Source : Reliance Research

Legend :

- Movement: Bullish and Bearish (Indicator Stochastic)
- Momentum: Oversold, Overbought and Neutral (Indicator RSI)
- Resistance Fractal: Strong Resistance
- Support Fractal: Strong Support
- Green: Good Conditions
- Red: Poor Conditions

HEAD OFFICE

Reliance Building

Jl. Pluit Sakti Raya No. 27AB,
Pluit
Jakarta 14450
T. +62 21 661 7768
F. +62 21 661 9884

RESEARCH DIVISION

Robertus Yanuar Hardy

robertus@reliance-securities.com

Rio Adrianus

rio.adrianus@reliance-securities.com

Lanjar Nafi Taulat I

lanjar@reliance-securities.com

Aji Setiawan

aji@reliance-securities.com

Shanti Dwi Jayanti

santi@reliance-securities.com

Head of Research

Research Analyst

Technical Research Analyst

Associate Research Analyst

Associate Research Analyst

EQUITY DIVISION

Jakarta- Pluit

Jl. Pluit Sakti Raya No. 27AB,
Pluit
Jakarta 14450
T. +62 21 661 7768
F. +62 21 661 9884

Bandung

Jl.Cisangkuy No.58
Bandung 40115
T. +62 22 721 8200
F. +62 22 721 9255

Surabaya - Gubeng

Jl. Bangka No. 22
Surabaya 60281
T. +62 31 501 1128
F. +62 31 503 3196

Makassar

Jl. Boto Lempangan No. 34 J
Makassar- Sulawesi Selatan
T. +62 411 3632388
F. +62 411 3614634

Jakarta - Sudirman

Menara Batavia Ground Floor
Jl.KH.Mas Mansyur Kav 126
Jakarta 10220
T. +62 21 57905455
F. +62 21 57950728

Tasikmalaya

Ruko Tasik Indah Plaza No.21
Jl. KHZ Mustofa No. 345
Tasikmalaya 46121
T. +62 265 345000
F. +62 265 345003

Surabaya - Diponegoro

Jl. Diponegoro No.26D
Surabaya 60261
T. +62 31 567 0388
F. +62 31 561 0528

Medan

Jl. Teuku Amir Hamzah No.40-O
Medan 20117
T. +62 61 6638592
F. +62 61 6638023

Jakarta - Kebon Jeruk

Plaza Kebon Jeruk
Jl.Raya Perjuangan Blok A/2
Jakarta 11530
T. +62 21 532 4074
F. +62 21 536 2157

Malang

Jl. Guntur No. 19
Malang 65112
T. +62 341 347 611
F. +62 341 347 615

Bali - Denpasar

Dewata Square Blok A3
Jl. Letda Tantular Renon
Denpasar 802361
T. +62 361 225099
F. +62 361 245099

Tangerang

Jl. Pahlawan Seribu Ruko BSD
Sektor 7 Blok RK kav. 9
Tangerang 15310
T. +62 21 5387495
F. +62 21 5387494

Pekanbaru

Jl. Jendral Sudirman No.73
Pekanbaru-Riau
T. +62 761 848414
F. +62 761 849456

Pontianak

Jl. MT Haryono No. 6
Pontianak 78121
T. +62 561 575674
F. +62 561 575670

Jakarta - Centro

Ruko Centro Residence Kav. 4-5
Tower C Lt. 1 No. 26-29
Jl. Macan, Daan Mogot
Jakarta 14450
T. +62 21 56945227
F. +62 21 56945226

Solo

Jl. Slamet Riyadi 330^a
Solo 57145
T. +62 271 736599
F. +62 271 733478

Balikpapan

Ruko Bukit Damai Indah
Blok I, No. 3, Rt.34
Jl. MT. Haryono, Gunung
Bahagia, Balikpapan Selatan
76114
T. +62 542 746313
F. +62 542 746317

IDX CORNER & INVESTMENT GALLERY**President University**

Resto Plaza 1F - Jababeka
Education Park
Jl. Ki Hajar Dewantara Raya
Cikarang - Bekasi 17550
T. +62 21 89106030

**Universitas Siliwangi
Tasikmalaya**

Jl. Siliwangi No. 24
Tasikmalaya 46151
T. +62 265 323685
F. +62 265 323534

Politeknik Kediri

Jl. Mayor Bismo No. 27
Kediri 64121
T. +62 354 683128
F. +62 354 683128

**Universitas Muhammadiyah
Sidoarjo**

Jl. Majapahit 666 B
Sidoarjo, Jawa Timur
T. +62 31 8945444
F. +62 31 8949333

**Universitas Tanjungpura
Pontianak**

Jl. Jendral Ahmad Yani
Pontianak 78124
T. +62 561 743465
F. +62 561 766840

**Universitas Pesantren Tinggi
Darul Ulum**

Kompleks Pp Darul Ulu,
Peterongan
Jombang, Jawa Timur 60281
T. +62 321 873655
F. +62 321 875771

STIE "AUB" Surakarta

Jl. Mr. Sartono 97, Cengklik
Nusukan, Surakarta 57135
T. +62 271 854803
F. +62 271 853084

Universitas Surabaya

Jl. Raya Kalirungkut
Surabaya 60293
T. +62 31 298 1203
F. +62 31 298 1204

**Universitas Muhammadiyah
Gresik**

Jl. Sumatra 101 GKB
Gresik 61121
T. +62 31 395 1414
F. +62 31 395 2585

Universitas Negeri Malang

Jl. Surabaya No. 6
Malang 65145
T. +62 341 585914
F. +62 341 55288

**Universitas Muhammadiyah
Malang**

Jl. Raya Tlogomas 246
Malang 65144
T. +62 341 464318-9
F. +62 341 460782

FSEI IAIN Antasari

Jl. Ahmad Yani Km. 4,5
Banjarmasin
T. + 62 511 3265783

STIE Malangkececwara

Jl. Terusan Candi Kalasan
Malang 65142
T. +62 341 491813
F. +62 341 495619

STIESIA Surabaya

Jl. Menur Pumpungan 30
Surabaya
T. +62 31 5947505
F. +62 31 5932218

**Universitas 17 Agustus
1945 Banyuwangi**

Jl. Adi Sucipto 26
Banyuwangi, Jawa Timur
T. +62 333 419613
F. +62 333 419163

STIE Tri Bhakti

Jl. Teuku Umar No. 24
Cut Meutia Setiakawan,
Bekasi
T. +62 21 82429400,
82429500
F. +62 271 726156

**Universitas Islam
Kalimantan**

Jl. Adiyaksa No. 2, Kayu
Tangi, Banjarmasin
T. + 62 511 3303871
F. + 62 511 3303871

STIKOM Bali

Jalan Puputan No. 86, Renon,
Denpasar
T. +62361 244445
F. +62361 264773

**Universitas Muhammadiyah
Pontianak**

Fakultas Ekonomi UM
Pontianak
Jl. Ahmad Yani, No. 111,
Pontianak 78124
T. +62561 743465
F. +62561 766840

**Universitas Negeri
Makassar**

Fakultas Ekonomi Gedung BT
Lt.2
Jl. A.P. Pettarani, Kampus
UNM, Gunungsari Baru
Makassar 90222
T. +62 411 889464 / 881244
F. +62 411 887604

STIE AAS Surakarta

Jl. Slamet Riyadi No. 361,
Kartasura, Surakarta
T. +62 271 726156
F. +62 271 726156

UPN "Veteran" Yogyakarta

Jl. Babarsari 2, Tambak Bayan
Yogyakarta
T. +62 274 485268
F. +62 274 487147

Disclaimer:

Information, opinions and recommendations contained in this document are presented by PT Reliance Sekuritas Indonesia Tbk. from sources that are considered reliable and dependable. This document is not an offer, invitation or any kind of representations to decide to buy or sell stock. Investment decisions taken based on this document is not the responsibility of PT Reliance Sekuritas Indonesia Tbk. PT Reliance Sekuritas Indonesia Tbk. reserves the right to change the contents of this document at any time without prior notice.