

## Weekly IHSG



5664.48  
47.93  
0.85%

Vol (Mn): 47.41  
Val (Bn): 33.92  
F Net B (Bn): 3,315

## Weekly LQ-45



938.18  
11.90  
1.28%

International	Last	WoW Chg	(%)
DJIA	20,764	310.89	1.52%
Nasdaq	5,984	178.82	3.08%
S&P 500	2,374	45.15	1.94%
FTSE 100	7,265	-63.32	-0.86%
Nikkei 225	18,876	448.88	2.44%
Hang Seng	24,139	-122.52	-0.50%
Sanghai Comp	3,130	-146.47	-4.47%

Source: Bloomberg

Sector	Last	WoW Chg	(%)
Agriculture	1823.24	-27.41	-1.48%
Basic Industry	604.67	-2.42	-0.40%
Composite	5664.48	50.94	0.91%
Consumer	2438.36	8.02	0.33%
Finance	876.61	-0.80	-0.09%
Infrastructure	1144.59	42.04	3.81%
Manufacture	1474.14	18.91	1.30%
Mining	1527.26	-19.62	-1.27%
Misc Industry	1536.73	90.80	6.28%
Property	508.32	2.07	0.41%
Trade	917.71	0.72	0.08%

Source: Bloomberg

Exchange Rates	Last	WoW Chg	(%)
USD / IDR	13284	19.00	0.14%
US \$ Index	98.99	-1.26	-1.25%
EUR / USD	1.09	0.02	2.32%
USD / JPY	110.38	2.11	1.95%
GBP / USD	1.28	0.03	2.14%
USD / CNY	6.89	0.00	-0.01%
AUD / USD	0.75	-0.01	-0.70%

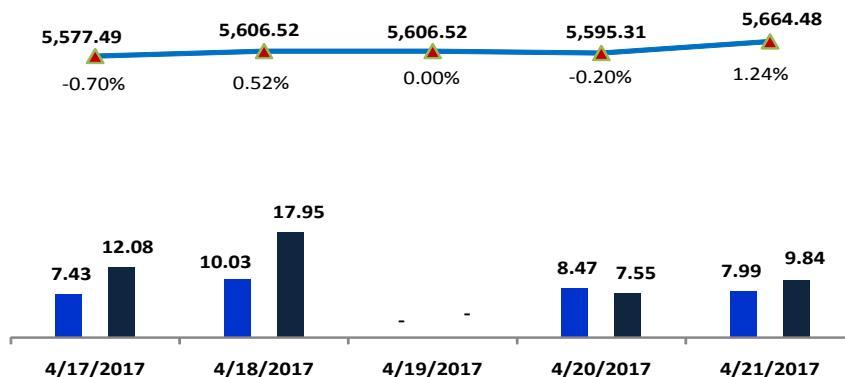
Others	Last	WoW Chg	(%)
S&P 500 Vlty (VIX)	10.72	-5.50	-33.91%
Baltic Dry	1,170.00	-126.00	-9.72%

Source: Bloomberg

## Monday Recommendation Flashback

Stock	Rec.	04/10/2016 (close)	Stop Loss	Loss	Week's Highest	Date	Potential Gain	Week's Lowest	Date	Potential Gain
PTPP	PS	3,470	3,400	-2.02%	3,470	4/17/2017	0.00%	3,200	4/21/2017	-7.78%
GJTL	SB	1,085	1,050	-3.23%	1,095	4/17/2017	0.92%	1,025	4/20/2017	-5.53%
BMRI	TB	11,650	11,400	-2.15%	11,850	4/18/2017	1.72%	11,400	4/21/2017	-2.15%
MPPA	SB	1,000	970	-3.00%	1,015	4/17/2017	1.50%	925	4/21/2017	-7.50%

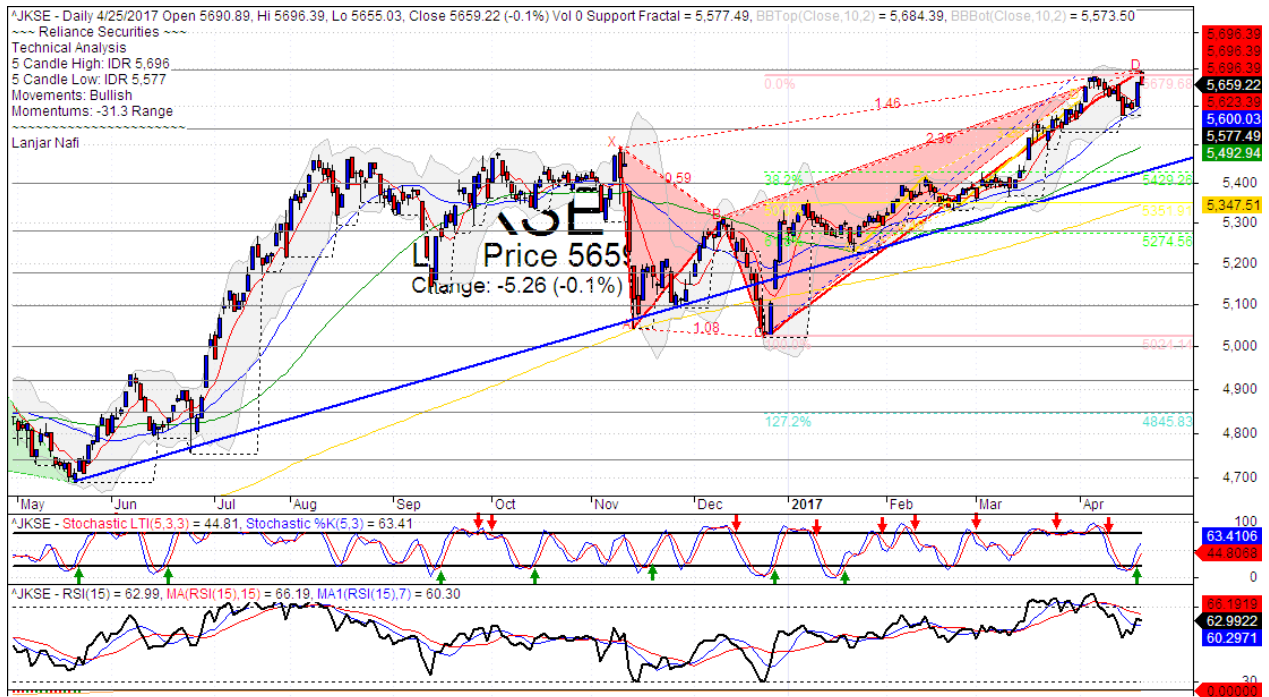
## IHSG on the Week (04/17/2017 - 04/21/2017)



LS-27 Close	916.85	924.00	924.00	922.71	938.18
LS-27 % Chg	-0.01	0.01	0.00	0.00	0.02
Frgn Net Buy (Bn)	871.88	768.87	0.00	1362.00	312.15
	1788.72	1692.87	924.00	2284.71	1250.34

your **reliable** partner | 1

## IHSG



Created with AmiBroker - advanced charting and technical analysis software. <http://www.amibroker.com>

S1	5545	R1	5700
S2	5400	R2	5860
S3	5280	R3	6000

### Comment:

IHSG consolidations after declined significant last week. Trading range 5577–5696.

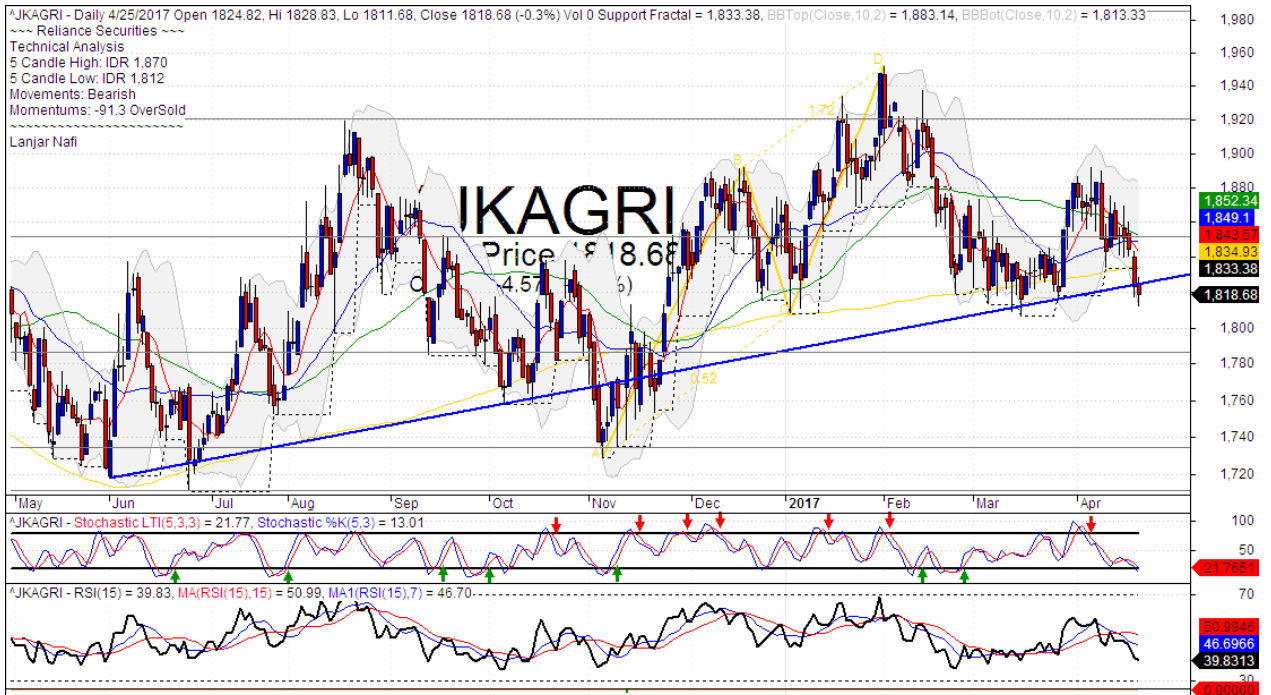
In the first session of the week. Reached the upper Bollinger bands, but forming a hanging man candlestick pattern with bearish reversal signal.

Stochastic, consolidations movement at middle oscillator. Limited upside potential. RSI, still flat momentum at near overbought oscillator.

Long term bullish trend movement.

Stop-loss level if pulled back the upper Bollinger bands at 5670. Downside potential until 5600 (MA25 support level) until 5500 (MA50 and bullish trend support level).

**Agriculture Index**



S1	1785	R1	1850
S2	1735	R2	1920
S3	1695	R3	1985

**Comment:**

Agriculture index declined significant after pulled back the MA50 resistance level last week. Trading range 1812-1870.

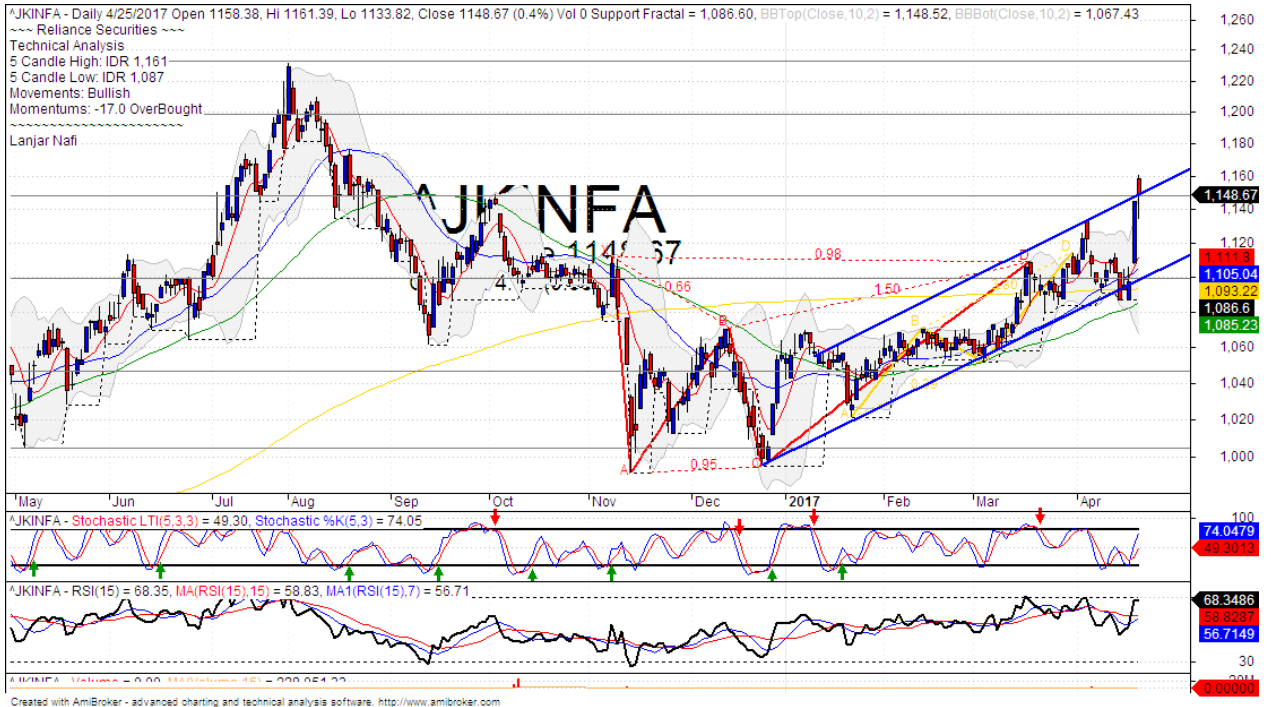
By the first session today, the index has trying to whipsaw at bullish trend and MA200 support level.

Stochastic has golden-cross indications at oversold momentum. RSI consolidations at near oversold oscillator.

Long term bearish trend movement.

This week resistance at 1850 (MA50 resistance level). Stop-loss position if broke the bullish trend support level at 1800. Upside target to 1850 (MA50 resistance level).

**Infrastructure Index**



S1	1145	R1	1200
S2	1100	R2	1245
S3	1045	R3	1290

**Comment:**

Infrastructure index surged significant after rebounded at bullish trend and MA50 support level last week. Trading range 1087–1161.

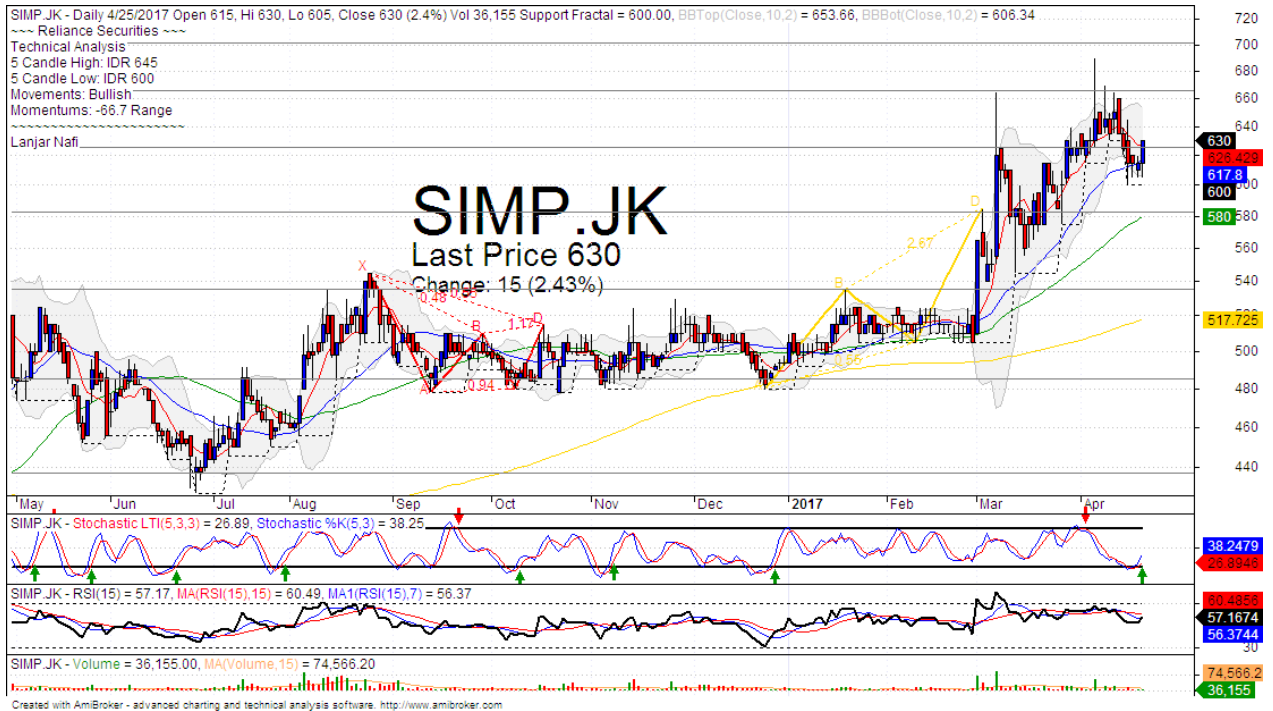
By the first session today, the index formations the bearish meeting line at bullish trend channeling resistance level. It's a distributions signal.

Stochastic, limited bullish movement at overbought oscillator. Broad downside potential.

Long term bullish trend movement.

This week resistance level at 1160 (bullish trend channeling resistance level). Stop-loss level at 1130 (Break out the support level). Downside potential until 1100 (bullish trend support level).

### SIMP



S1	625	R1	665
S2	580	R2	700
S3	535	R3	740

#### Comment:

SIMP has declined significant after pulled back the upper Bollinger bands last week. Trading range 600–645.

By the first session this week, the price has whipsaw at MA25 support level with bullish reversal signal.

Stochastic golden-cross at oversold oscillator. Broad upside potential. RSI consolidations at middle oscillator.

Long term bearish trend movement.

#### Upside scenario: (Probability 70%)

If the price has a break out confirmations with MA7 resistance level at 630. Upside target at 700.

#### Downside scenario: (Probability 30%)

Stop loss level at 610 (Broke the bullish trend support level). Do a tight stop loss on this level. If a break down appeared, the price will potentially continue to MA50 support level at 580.

### TLKM



S1	4400	R1	4570
S2	4200	R2	4800
S3	3950	R3	5050

#### Comment:

TLKM surged significant after rebounded at MA50 support level last week. Trading range 4010-4520.

By the first session this week, The price bearish meeting line candlestick pattern at resistance level. Reversal signal. Bearish butterfly harmonic pattern formations.

Stochastic, limited bullish movement at near overbought oscillator. RSI, has reversal momentum at overbought oscillator.

Long term bearish movement.

#### Upside scenario: (Probability 20%)

If the price has broke the resistance level at 4570. Upside target to 4800.

#### Downside scenario: (Probability 80%)

Stop loss level at 4360 (Break out support level). Do a tight stop loss on this level. If a break down appeared, the price will potentially continue to 4180 (Bullish butterfly corrections target level).

## HEAD OFFICE

### Reliance Building

Jl. Pluit Sakti Raya No. 27AB,  
Pluit  
Jakarta 14450  
T. +62 21 661 7768  
F. +62 21 661 9884

## RESEARCH DIVISION

### Robertus Yanuar Hardy

*robertus@reliance-securities.com*

### Rio Adrianus

*rio.adrianus@reliance-securities.com*

### Lanjar Nafi Taulat I

*lanjar@reliance-securities.com*

### Aji Setiawan

*aji@reliance-securities.com*

### Shanti Dwi Jayanti

*santi@reliance-securities.com*

Senior Analyst

Research Analyst

Technical Research Analyst

Associate Research Analyst

Associate Research Analyst

## EQUITY DIVISION

### Jakarta- Pluit

Jl. Pluit Sakti Raya No. 27AB,  
Pluit  
Jakarta 14450  
T. +62 21 661 7768  
F. +62 21 661 9884

### Bandung

Jl.Cisangkuy No.58  
Bandung 40115  
T. +62 22 721 8200  
F. +62 22 721 9255

### Surabaya - Gubeng

Jl. Bangka No. 22  
Surabaya 60281  
T. +62 31 501 1128  
F. +62 31 503 3196

### Makassar

Jl. Boto Lempangan No. 34 J  
Makassar- Sulawesi Selatan  
T. +62 411 3632388  
F. +62 411 3614634

### Jakarta - Sudirman

Menara Batavia Ground Floor  
Jl.KH.Mas Mansyur Kav 126  
Jakarta 10220  
T. +62 21 57905455  
F. +62 21 57950728

### Tasikmalaya

Ruko Tasik Indah Plaza No.21  
Jl. KHZ Mustofa No. 345  
Tasikmalaya 46121  
T. +62 265 345000  
F. +62 265 345003

### Surabaya - Diponegoro

Jl. Diponegoro No.26D  
Surabaya 60261  
T. +62 31 567 0388  
F. +62 31 561 0528

### Medan

Jl. Teuku Amir Hamzah No.40-O  
Medan 20117  
T. +62 61 6638592  
F. +62 61 6638023

### Jakarta - Kebon Jeruk

Plaza Kebon Jeruk  
Jl.Raya Perjuangan Blok A/2  
Jakarta 11530  
T. +62 21 532 4074  
F. +62 21 536 2157

### Malang

Jl. Guntur No. 19  
Malang 65112  
T. +62 341 347 611  
F. +62 341 347 615

### Bali - Denpasar

Dewata Square Blok A3  
Jl. Letda Tantular Renon  
Denpasar 802361  
T. +62 361 225099  
F. +62 361 245099

### Tangerang

Jl. Pahlawan Seribu Ruko BSD  
Sektor 7 Blok RK kav. 9  
Tangerang 15310  
T. +62 21 5387495  
F. +62 21 5387494

### Pekanbaru

Jl. Jendral Sudirman No.73  
Pekanbaru-Riau  
T. +62 761 848414  
F. +62 761 849456

### Pontianak

Jl. MT Haryono No. 6  
Pontianak 78121  
T. +62 561 575674  
F. +62 561 575670

### Jakarta - Centro

Ruko Centro Residence Kav. 4-5  
Tower C Lt. 1 No. 26-29  
Jl. Macan, Daan Mogot  
Jakarta 14450  
T. +62 21 56945227  
F. +62 21 56945226

### Solo

Jl. Slamet Riyadi 330<sup>a</sup>  
Solo 57145  
T. +62 271 736599  
F. +62 271 733478

### Balikpapan

Ruko Bukit Damai Indah  
Blok I, No. 3, Rt.34  
Jl. MT. Haryono, Gunung  
Bahagia, Balikpapan Selatan  
76114  
T. +62 542 746313  
F. +62 542 746317

## IDX CORNER & INVESTMENT GALLERY

**President University**  
Resto Plaza 1F - Jababeka  
Education Park  
Jl. Ki Hajar Dewantara Raya  
Cikarang - Bekasi 17550  
T. +62 21 89106030

**Universitas Siliwangi  
Tasikmalaya**  
Jl. Siliwangi No. 24  
Tasikmalaya 46151  
T. +62 265 323685  
F. +62 265 323534

**Politeknik Kediri**  
Jl. Mayor Bismo No. 27  
Kediri 64121  
T. +62 354 683128  
F. +62 354 683128

**Universitas Muhammadiyah  
Sidoarjo**  
Jl. Majapahit 666 B  
Sidoarjo, Jawa Timur  
T. +62 31 8945444  
F. +62 31 8949333

**Universitas Tanjungpura  
Pontianak**  
Jl. Jendral Ahmad Yani  
Pontianak 78124  
T. +62 561 743465  
F. +62 561 766840

**Universitas Pesantren Tinggi  
Darul Ulum**  
Kompleks Pp Darul Ulu,  
Peterongan  
Jombang, Jawa Timur 60281  
T. +62 321 873655  
F. +62 321 875771

**STIE "AUB" Surakarta**  
Jl. Mr. Sartono 97, Cengklik  
Nusukan, Surakarta 57135  
T. +62 271 854803  
F. +62 271 853084

**Universitas Surabaya**  
Jl. Raya Kalirungkut  
Surabaya 60293  
T. +62 31 298 1203  
F. +62 31 298 1204

**Universitas Muhammadiyah  
Gresik**  
Jl. Sumatra 101 GKB  
Gresik 61121  
T. +62 31 395 1414  
F. +62 31 395 2585

**Universitas Negeri Malang**  
Jl. Surabaya No. 6  
Malang 65145  
T. +62 341 585914  
F. +62 341 55288

**Universitas Muhammadiyah  
Malang**  
Jl. Raya Tlogomas 246  
Malang 65144  
T. +62 341 464318-9  
F. +62 341 460782

**FSEI IAIN Antasari**  
Jl. Ahmad Yani Km. 4,5  
Banjarmasin  
T. + 62 511 3265783

**STIE Malangkececwara**  
Jl. Terusan Candi Kalasan  
Malang 65142  
T. +62 341 491813  
F. +62 341 495619

**STIESIA Surabaya**  
Jl. Menur Pumpungan 30  
Surabaya  
T. +62 31 5947505  
F. +62 31 5932218

**Universitas 17 Agustus  
1945 Banyuwangi**  
Jl. Adi Sucipto 26  
Banyuwangi, Jawa Timur  
T. +62 333 419613  
F. +62 333 419163

**STIE Tri Bhakti**  
Jl. Teuku Umar No. 24  
Cut Meutia Setiakawan,  
Bekasi  
T. +62 21 82429400,  
82429500  
F. +62 271 726156

**Universitas Islam  
Kalimantan**  
Jl. Adiyaksa No. 2, Kayu  
Tangi, Banjarmasin  
T. + 62 511 3303871  
F. + 62 511 3303871

**STIKOM Bali**  
Jalan Puputan No. 86, Renon,  
Denpasar  
T. +62361 244445  
F. +62361 264773

**Universitas Muhammadiyah  
Pontianak**  
Fakultas Ekonomi UM  
Pontianak  
Jl. Ahmad Yani, No. 111,  
Pontianak 78124  
T. +62561 743465  
F. +62561 766840

**Universitas Negeri  
Makassar**  
Fakultas Ekonomi Gedung BT  
Lt.2  
Jl. A.P. Pettarani, Kampus  
UNM, Gunungsari Baru  
Makassar 90222  
T. +62 411 889464 / 881244  
F. +62 411 887604

**STIE AAS Surakarta**  
Jl. Slamet Riyadi No. 361,  
Kartasura, Surakarta  
T. +62 271 726156  
F. +62 271 726156

**UPN "Veteran" Yogyakarta**  
Jl. Babarsari 2, Tambak Bayan  
Yogyakarta  
T. +62 274 485268  
F. +62 274 487147

### Disclaimer:

Information, opinions and recommendations contained in this document are presented by PT Reliance Sekuritas Indonesia Tbk. from sources that are considered reliable and dependable. This document is not an offer, invitation or any kind of representations to decide to buy or sell stock. Investment decisions taken based on this document is not the responsibility of PT Reliance Sekuritas Indonesia Tbk. PT Reliance Sekuritas Indonesia Tbk. reserves the right to change the contents of this document at any time without prior notice.