

## IHSG



5647.37  
-28.44  
-0.50%

## LQ45



936.55  
-4.24  
-0.45%

Vol (Mn): 9294  
Val (Bn): 6615

Sector Indices	Last	Change	Change %
Agriculture	1815.41	(4.40)	(0.24)
Basic Industry	599.56	(2.82)	(0.47)
Consumer	2452.27	15.41	0.63
Finance	893.15	(2.71)	(0.30)
Infrastructure	1130.84	(15.73)	(1.39)
Manufacture	1468.67	0.16	0.01
Mining	1465.52	(33.82)	(2.31)
Misc Industry	1494.24	(21.54)	(1.44)
Property	493.74	(5.06)	(1.02)
Trade	909.91	(5.48)	(0.60)

Source: relitrade next G

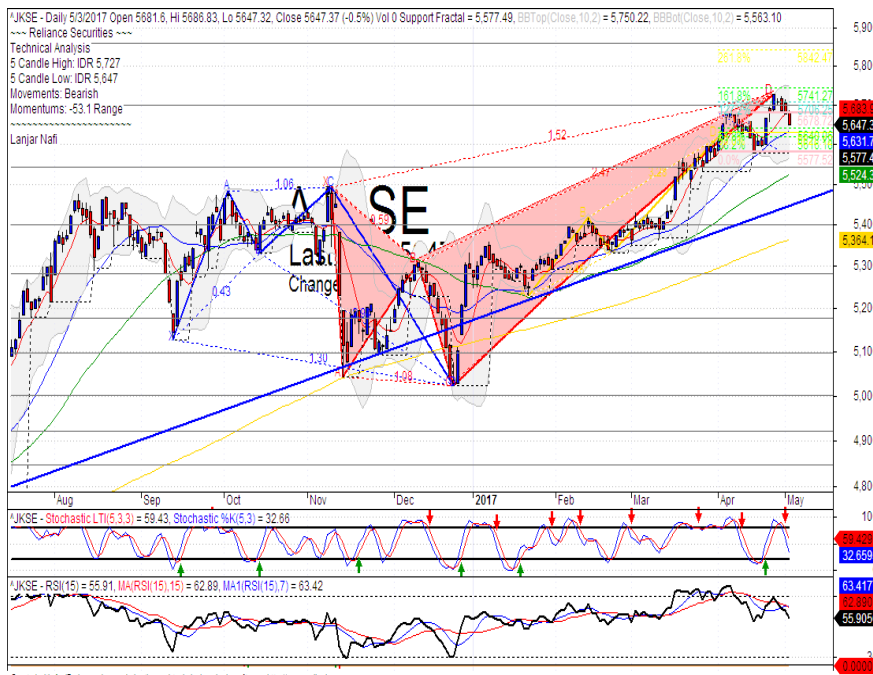
Most Active	Last	Change %	Freq
INDY	920	8.2	11,078
SRIL	298	2.8	9,209
PBRX	595	(0.8)	7,268
DOID	945	(5.5)	6,948
BUMI	428	(1.4)	6,566

Most Volume	Last	Change %	M share
MYRX	134	0.8	14,485
RIMO	159	12.0	7,097
BUMI	428	(1.4)	4,964
BRMS	67	(8.2)	4,243
SRIL	298	2.8	3,579

Most Value	Last	Change %	Rp Bil
TLKM	4,340	(1.6)	405.26
BBRI	13,200	1.1	403.13
BMRI	11,575	(0.9)	288.71
BUMI	428	(1.4)	215.21
INDY	920	8.2	199.24

Source: relitrade next G

## IHSG Technical Review



## BDMN



R3	5775
R2	5400
R1	5000
Last	4900
S1	4630
S2	4390
S3	4160

### PARTIAL SELL

#### Comment:

Pulled back resistance level indications. Reversal signal.

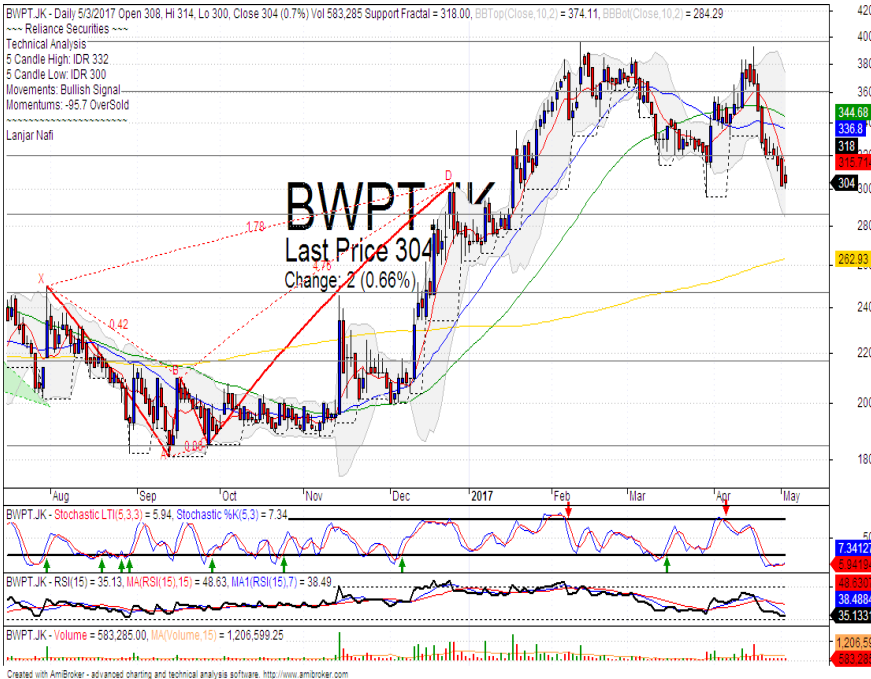
Stochastic, dead-cross indications at overbought oscillator.

RSI consolidations momentum at near overbought oscillator.

Long term bullish and medium term bearish trend movement.

Stop-loss if pulled back confirmations at 4820. Corrections potential until Lower Bollinger bands at 4420.

## BWPT



R3	394
R2	360
R1	320
Last	304
S1	286
S2	246
S3	216

### TRADING BUY

#### Comment:

Bullish homing pigeon candlestick pattern moderate trading volume. Reversal signal.

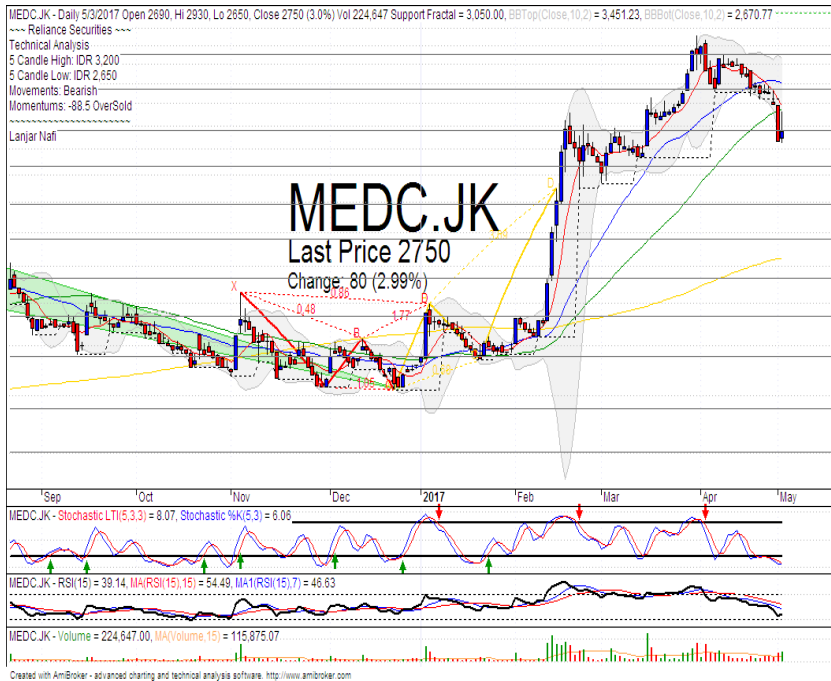
Stochastic golden-cross at oversold oscillator.

RSI bullish reversal momentum at oversold oscillator.

Short term bearish trend movement.

Upside target to MA50 at 344. Stop-loss if false confirmations pattern at 296.

## MEDC



R3	3500
R2	3150
R1	2750
Last	2750
S1	2460
S2	2180
S3	1960

**TRADING BUY**

### Comment:

Bullish harami candlestick pattern with huge trading volume. Reversal signal.

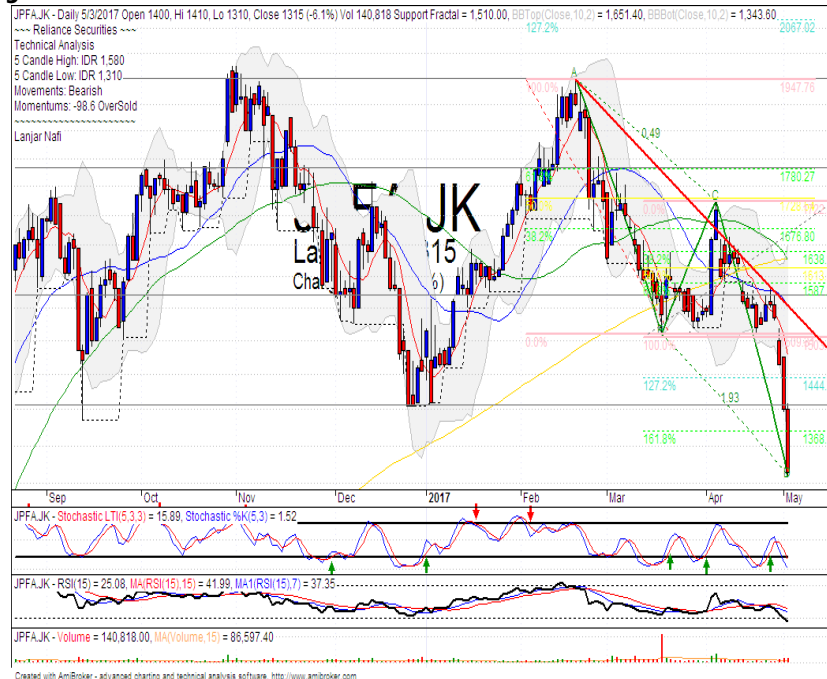
Stochastic golden-cross at oversold oscillator.

RSI bullish reversal momentum at the oversold oscillator.

Medium term bearish trend movement.

Upside target to MA25 at 3210. Stop-loss if false confirmations reversal pattern at 2720.

## JPPA



R3	1780
R2	1570
R1	1400
Last	1315
S1	1260
S2	1150
S3	1060

**TRADING BUY**

### Comment:

Declined significant. Arrived at AB=CD pattern formations. Speculative phase.

Stochastic arrived at oversold wait for golden-cross confirmations.

RSI oversold momentum.

Medium term bearish trend movement.

Upside target to 1370 until 1445. Stop-loss if broke the support level at 1250.

Stocks	S2	S1	Closing Price	R1	R2	Technical Notes	Rec	Stop Loss	Rec Buy Prc	Target Price
<b>Plantation</b>										
AALI	13,000	14,000	14,175	14,900	15,850	Consolidations	W	14,000		
LSIP	1,250	1,300	1,385	1,405	1,545	Consolidations	W	1,350		
<b>Mining</b>										
INCO	1,800	1,965	2,110	2,120	2,300	Consolidations	W	2,100		
<b>Consumer</b>										
UNVR	42,500	44,000	45,100	46,000	47,800	Bearish momentum	S	44,700		
INDF	7,250	7,900	8,475	8,500	9,125	Stoch golden-cross	S	8,200		
KLBF	1,490	1,540	1,545	1,600	1,650	Bearish momentum	W	1,500		
<b>Trading</b>										
ACES	810	870	910	920	970	Bearish momentum	S	900		
AKRA	6,100	6,350	6,450	6,600	7,000	Bearish momentum	S	6,400		
UNTR	24,000	25,325	25,900	26,750	28,175	Consolidations	W	25,800		
<b>Property &amp; Construction</b>										
LPCK	4,000	4,170	4,250	4,300	4,450	Bearish momentum	S	4,200		
WIKA	1,990	2,200	2,300	2,400	2,600	Pulled back resistance level	S	2,300		
BSDE	1,630	1,720	1,765	1,830	1,935	Pulled back bearish trend	S	1,750		
WSKT	2,120	2,260	2,290	2,410	2,600	Pulled back bearish trend	S	2,250		
ADHI	1,950	2,070	2,160	2,200	2,300	Break out support level	S	2,050		
<b>Basic Industry &amp; Chemical</b>										
SMGR	8,150	8,725	8,725	9,350	9,900	Consolidations	W	8,700		
CPIN	2,850	3,000	3,170	3,210	3,400	Arrived at support level	TB	3,250		3,420
MAIN	1,000	1,070	1,110	1,130	1,200	Break out support level	W	1,050		
INTP	14,600	15,500	16,200	16,350	17,500	Break out support level	S	16,000		
<b>Miscellaneous</b>										
SRIL	270	288	298	316	350	Piercing line	SB	284	296	350
ASII	8,250	8,650	8,850	9,000	9,500	Bearish momentum	S	8,700		
<b>Finance</b>										
BBTN	2,100	2,200	2,300	2,360	2,480	Bearish momentum	S	2,180		
BMRI	11,100	11,450	11,575	11,800	12,200	Consolidations	TB	11,500		12,400
BTPN	2,340	2,550	2,590	2,770	3,000	Oversold	TB	2,540		2,770
BJBR	1,750	1,915	2,020	2,140	2,210	Stoch golden-cross	TB	2,000		2,140
BBRI	12,350	13,000	13,200	13,500	14,000	Touching the resistance level	PS	13,000		
<b>Infrastructure</b>										
TLKM	3,950	4,200	4,340	4,400	4,570	Bearish momentum	S	4,300		
PGAS	2,040	2,200	2,340	2,360	2,550	Broke the support level	W	2,380		

Source : Reliance Sekuritas Indonesia

## Analyst Conclusions:

The index has trying strong support level. Waiting for rebound signal or break out confirmations.

Legend :

- B: BUY (allocate till 100% of the weighted capital to accumulate, higher than 50% upside probability)
- SB: SPECULATIVE BUY (allocate 25%-50% of the weighted capital to accumulate, 25%-50% upside probability)
- W: WAIT (wait for proper entry level, do the stop-loss if necessary)
- H: HOLD (hold the portfolio position, aim for the best price to distribute)
- PS: PARTIAL SELL (distribute 25%-50% part of the portfolio, 25%-50% downside probability)
- S: SELL (distribute till 100% of the portfolio, higher than 50% downside probability)
- TB: TRADING BUY (short term or intraday trading within a tight trading range. Highly speculative).

Ticker	Resistance	Price	Support	Weekly	Weekly	Indicator			Moving Average			
	Fractal	5/3/2017	Fractal	High	Low	Stochastic	RSI	B. Band	25 Days	50 Days	200 Days	
AALIJK	14,950	14,175	14,400	14,625	14,400	Oversold	Bearish	Neutral	Lower Bands	Under	Under	Under
ACESJK	965	910	880	965	930	Neutral	Bearish	Neutral	Middle Bands	Upper	Upper	Upper
ADHIJK	2,330	2,160	2,220	2,330	2,230	Neutral	Bearish	Neutral	Middle Bands	Under	Under	Under
ADROJK	1,885	1,630	1,850	1,850	1,750	Oversold	Bearish	Oversold	Lower Bands	Under	Under	Upper
AISAJK	2,280	2,240	2,100	2,370	2,200	Neutral	Bullish	Neutral	Middle Bands	Upper	Upper	Upper
AKRAJK	6,900	6,450	6,350	6,900	6,600	Neutral	Bearish	Neutral	Middle Bands	Under	Upper	Under
ANTMJK	715	665	695	715	700	Oversold	Bearish	Oversold	Lower Bands	Under	Under	Under
APLNJK	240	206	208	216	212	Oversold	Bullish	Neutral	Middle Bands	Under	Under	Under
ASIIJK	9,350	8,850	8,350	9,100	9,025	Neutral	Bearish	Neutral	Middle Bands	Upper	Upper	Upper
ASRIJK	360	336	346	360	346	Oversold	Bearish	Neutral	Lower Bands	Under	Under	Under
BBCAJK	18,000	17,750	16,700	18,000	17,625	Neutral	Bullish	Neutral	Middle Bands	Upper	Upper	Upper
BBKPK	655	630	625	650	635	Neutral	Bearish	Neutral	Middle Bands	Under	Upper	Under
BBNIJK	6,450	6,400	6,075	6,450	6,400	Overbought	Bearish	Neutral	Middle Bands	Under	Under	Upper
BBRIJK	13,225	13,200	12,900	13,275	13,125	Neutral	Bearish	Neutral	Middle Bands	Upper	Upper	Upper
BBTNJK	2,390	2,300	2,230	2,360	2,300	Neutral	Bearish	Neutral	Middle Bands	Under	Upper	Upper
BDMNJK	5,025	4,900	4,420	5,025	4,630	Neutral	Bearish	Neutral	Middle Bands	Upper	Upper	Upper
BHITJK	128	117	119	123	120	Oversold	Bearish	Oversold	Lower Bands	Under	Under	Under
BJBRJK	2,240	2,020	2,000	2,070	2,030	Oversold	Bearish	Neutral	Middle Bands	Under	Under	Upper
BJTMJK	720	670	665	720	685	Neutral	Bearish	Neutral	Middle Bands	Under	Upper	Upper
BKSLJK	100	83	87	90	87	Neutral	Bearish	Oversold	Lower Bands	Under	Under	Under
BMRIJK	12,275	11,575	11,400	12,275	11,650	Neutral	Bearish	Neutral	Middle Bands	Under	Upper	Upper
BMTRJK	550	545	525	550	535	Neutral	Bullish	Neutral	Middle Bands	Upper	Upper	Under
BSDEJK	1,840	1,765	1,750	1,825	1,775	Neutral	Bearish	Neutral	Middle Bands	Under	Under	Under
BTPNJK	2,650	2,590	2,580	2,650	2,600	Neutral	Bearish	Neutral	Middle Bands	Under	Under	Under
BWPTJK	394	304	318	332	314	Oversold	Bullish	Neutral	Middle Bands	Under	Under	Upper
CMNPJK	1,420	1,390	1,390	1,420	1,395	Oversold	Bullish	Neutral	Middle Bands	Under	Under	Under
CPINJK	3,400	3,170	3,180	3,370	3,200	Neutral	Bearish	Neutral	Middle Bands	Under	Under	Under
CSAPJK	464	456	448	468	452	Neutral	Bearish	Neutral	Middle Bands	Under	Under	Under
CTRAJK	1,320	1,180	1,080	1,310	1,235	Neutral	Bearish	Neutral	Middle Bands	Under	Under	Under
DILDJK	442	428	420	442	430	Neutral	Bearish	Neutral	Middle Bands	Upper	Under	Under
EXCLJK	3,270	3,080	2,900	3,270	3,120	Neutral	Bearish	Neutral	Middle Bands	Under	Upper	Upper
GGRMJK	68,575	67,800	63,500	68,125	65,950	Overbought	Bullish	Neutral	Middle Bands	Upper	Upper	Upper
GIAAJK	396	352	366	380	360	Oversold	Bearish	Neutral	Lower Bands	Under	Under	Under
GJTLJK	1,120	985	1,020	1,070	1,025	Oversold	Bullish	Neutral	Lower Bands	Under	Under	Under
HEXAJK	4,600	4,200	4,350	4,470	4,300	Neutral	Bearish	Neutral	Middle Bands	Upper	Upper	Upper
HRUMJK	2,880	2,410	2,450	2,650	2,500	Neutral	Bearish	Neutral	Middle Bands	Under	Upper	Upper
ICBPJK	8,950	8,600	8,075	8,950	8,550	Neutral	Bearish	Neutral	Middle Bands	Upper	Upper	Under
IMASJK	1,200	1,150	1,095	1,160	1,150	Overbought	Bullish	Neutral	Middle Bands	Under	Under	Under
INCOJK	2,370	2,110	2,140	2,300	2,170	Neutral	Bearish	Neutral	Lower Bands	Under	Under	Under
INDFJK	8,075	8,475	7,925	8,550	8,175	Overbought	Bearish	Overbought	Upper Bands	Upper	Upper	Upper
INDYJK	805	920	690	990	710	Neutral	Bullish	Overbought	Upper Bands	Upper	Upper	Upper
INTAJK	472	354	446	472	450	Neutral	Bearish	Oversold	Lower Bands	Under	Under	Upper
INTPJK	17,075	16,200	15,975	17,075	16,275	Neutral	Bearish	Neutral	Middle Bands	Under	Upper	Under
ITMGJK	19,850	18,050	18,450	19,850	19,000	Neutral	Bearish	Neutral	Lower Bands	Under	Under	Upper
JFPAJK	1,580	1,315	1,510	1,580	1,410	Oversold	Bearish	Oversold	Lower Bands	Under	Under	Under
JSMRJK	4,700	4,610	4,400	4,700	4,490	Neutral	Bullish	Neutral	Middle Bands	Under	Under	Under
KUJAJK	340	326	326	334	328	Neutral	Bullish	Neutral	Lower Bands	Under	Upper	Upper
KLBFJK	1,615	1,545	1,540	1,615	1,555	Neutral	Bearish	Neutral	Middle Bands	Under	Upper	Under
KRASJK	605	545	570	605	575	Neutral	Bearish	Oversold	Lower Bands	Under	Under	Under
LPCKJK	4,750	4,250	4,090	4,750	4,370	Neutral	Bearish	Neutral	Middle Bands	Under	Under	Under
LPKRJK	815	785	775	810	795	Neutral	Bearish	Neutral	Middle Bands	Upper	Upper	Under
LPPFJK	15,150	14,875	13,025	15,150	14,000	Overbought	Bearish	Neutral	Middle Bands	Upper	Upper	Under
LSIPJK	1,405	1,385	1,355	1,420	1,380	Neutral	Bullish	Neutral	Middle Bands	Under	Under	Under
MAINJK	1,265	1,110	1,225	1,265	1,185	Oversold	Bearish	Oversold	Lower Bands	Under	Under	Under
MAPIJK	6,475	6,300	6,125	6,475	6,200	Neutral	Bearish	Neutral	Middle Bands	Upper	Upper	Upper
MASAJK	244	226	226	244	234	Neutral	Bearish	Neutral	Middle Bands	Under	Under	Under
MNCNJK	1,820	1,860	1,720	1,860	1,805	Overbought	Bullish	Neutral	Middle Bands	Upper	Upper	Under
MPPAJK	1,030	925	915	1,010	955	Neutral	Bearish	Neutral	Middle Bands	Under	Under	Under
MTLAJK	330	328	326	330	326	Neutral	Bullish	Neutral	Middle Bands	Upper	Upper	Upper
MYORJK	2,140	2,010	1,950	2,140	2,050	Neutral	Bearish	Neutral	Middle Bands	Under	Under	Upper
PGASJK	2,520	2,340	2,360	2,520	2,430	Neutral	Bearish	Neutral	Lower Bands	Under	Under	Under
PTBAJK	13,075	12,375	12,300	13,075	12,550	Neutral	Bearish	Neutral	Middle Bands	Under	Upper	Upper
RALSJK	1,190	1,320	1,075	1,330	1,275	Overbought	Bearish	Neutral	Middle Bands	Upper	Upper	Upper
ROTIJK	1,655	1,640	1,610	1,670	1,640	Neutral	Bearish	Neutral	Middle Bands	Upper	Upper	Upper
SCMAJK	2,950	2,820	2,730	2,900	2,880	Neutral	Bearish	Neutral	Middle Bands	Upper	Upper	Upper
SGROJK	2,150	2,070	1,960	2,150	2,060	Neutral	Bearish	Neutral	Middle Bands	Upper	Upper	Upper
SIMPJK	690	620	605	660	640	Neutral	Bearish	Neutral	Middle Bands	Under	Upper	Upper
SMCBJK	940	895	895	905	895	Neutral	Bullish	Neutral	Lower Bands	Under	Under	Under
SMGRJK	9,025	8,725	8,650	9,025	8,800	Neutral	Bearish	Neutral	Middle Bands	Under	Under	Under
SMRAJK	1,415	1,350	1,330	1,405	1,370	Neutral	Bearish	Neutral	Middle Bands	Under	Under	Under
SRILJK	392	298	300	312	302	Oversold	Bullish	Neutral	Middle Bands	Under	Under	Upper
SSIAJK	690	740	695	790	735	Neutral	Bullish	Neutral	Middle Bands	Upper	Upper	Upper
SSMSJK	1,725	1,700	1,625	1,750	1,700	Overbought	Bearish	Neutral	Middle Bands	Upper	Upper	Upper
TLKMJK	4,520	4,340	4,010	4,450	4,400	Neutral	Bearish	Neutral	Middle Bands	Upper	Upper	Upper
TOTLJK	820	800	790	810	800	Oversold	Bullish	Neutral	Middle Bands	Under	Under	Under
UNTRJK	27,950	25,900	26,150	27,950	26,425	Neutral	Bearish	Neutral	Middle Bands	Under	Under	Upper
UNVRJK	44,000	45,100	44,325	45,800	45,400	Neutral	Bearish	Neutral	Middle Bands	Upper	Upper	Upper

Source : Reliance Research

### Legend :

- Movement: Bullish and Bearish (Indicator Stochastic)
- Momentum: Oversold, Overbought and Neutral (Indicator RSI)
- Resistance Fractal: Strong Resistance
- Support Fractal: Strong Support
- Green: Good Conditions
- Red: Poor Conditions

## HEAD OFFICE

### Reliance Building

Jl. Pluit Sakti Raya No. 27AB,  
Pluit  
Jakarta 14450  
T. +62 21 661 7768  
F. +62 21 661 9884

## RESEARCH DIVISION

### Robertus Yanuar Hardy

*robertus@reliance-securities.com*

### Rio Adrianus

*rio.adrianus@reliance-securities.com*

### Lanjar Nafi Taulat I

*lanjar@reliance-securities.com*

### Aji Setiawan

*aji@reliance-securities.com*

### Shanti Dwi Jayanti

*santi@reliance-securities.com*

Head of Research

Research Analyst

Technical Research Analyst

Associate Research Analyst

Associate Research Analyst

## EQUITY DIVISION

### Jakarta- Pluit

Jl. Pluit Sakti Raya No. 27AB,  
Pluit  
Jakarta 14450  
T. +62 21 661 7768  
F. +62 21 661 9884

### Bandung

Jl.Cisangkuy No.58  
Bandung 40115  
T. +62 22 721 8200  
F. +62 22 721 9255

### Surabaya - Gubeng

Jl. Bangka No. 22  
Surabaya 60281  
T. +62 31 501 1128  
F. +62 31 503 3196

### Makassar

Jl. Boto Lempangan No. 34 J  
Makassar- Sulawesi Selatan  
T. +62 411 3632388  
F. +62 411 3614634

### Jakarta - Sudirman

Menara Batavia Ground Floor  
Jl.KH.Mas Mansyur Kav 126  
Jakarta 10220  
T. +62 21 57905455  
F. +62 21 57950728

### Tasikmalaya

Ruko Tasik Indah Plaza No.21  
Jl. KHZ Mustofa No. 345  
Tasikmalaya 46121  
T. +62 265 345000  
F. +62 265 345003

### Surabaya - Diponegoro

Jl. Diponegoro No.26D  
Surabaya 60261  
T. +62 31 567 0388  
F. +62 31 561 0528

### Medan

Jl. Teuku Amir Hamzah No.40-O  
Medan 20117  
T. +62 61 6638592  
F. +62 61 6638023

### Jakarta - Kebon Jeruk

Plaza Kebon Jeruk  
Jl.Raya Perjuangan Blok A/2  
Jakarta 11530  
T. +62 21 532 4074  
F. +62 21 536 2157

### Malang

Jl. Guntur No. 19  
Malang 65112  
T. +62 341 347 611  
F. +62 341 347 615

### Bali - Denpasar

Dewata Square Blok A3  
Jl. Letda Tantular Renon  
Denpasar 802361  
T. +62 361 225099  
F. +62 361 245099

### Tangerang

Jl. Pahlawan Seribu Ruko BSD  
Sektor 7 Blok RK kav. 9  
Tangerang 15310  
T. +62 21 5387495  
F. +62 21 5387494

### Pekanbaru

Jl. Jendral Sudirman No.73  
Pekanbaru-Riau  
T. +62 761 848414  
F. +62 761 849456

### Pontianak

Jl. MT Haryono No. 6  
Pontianak 78121  
T. +62 561 575674  
F. +62 561 575670

### Jakarta - Centro

Ruko Centro Residence Kav. 4-5  
Tower C Lt. 1 No. 26-29  
Jl. Macan, Daan Mogot  
Jakarta 14450  
T. +62 21 56945227  
F. +62 21 56945226

### Solo

Jl. Slamet Riyadi 330<sup>a</sup>  
Solo 57145  
T. +62 271 736599  
F. +62 271 733478

### Balikpapan

Ruko Bukit Damai Indah  
Blok I, No. 3, Rt.34  
Jl. MT. Haryono, Gunung  
Bahagia, Balikpapan Selatan  
76114  
T. +62 542 746313  
F. +62 542 746317

**IDX CORNER & INVESTMENT GALLERY****President University**

Resto Plaza 1F - Jababeka  
Education Park  
Jl. Ki Hajar Dewantara Raya  
Cikarang - Bekasi 17550  
T. +62 21 89106030

**Universitas Siliwangi  
Tasikmalaya**

Jl. Siliwangi No. 24  
Tasikmalaya 46151  
T. +62 265 323685  
F. +62 265 323534

**Politeknik Kediri**

Jl. Mayor Bismo No. 27  
Kediri 64121  
T. +62 354 683128  
F. +62 354 683128

**Universitas Muhammadiyah  
Sidoarjo**

Jl. Majapahit 666 B  
Sidoarjo, Jawa Timur  
T. +62 31 8945444  
F. +62 31 8949333

**Universitas Tanjungpura  
Pontianak**

Jl. Jendral Ahmad Yani  
Pontianak 78124  
T. +62 561 743465  
F. +62 561 766840

**Universitas Pesantren Tinggi  
Darul Ulum**

Kompleks Pp Darul Ulu,  
Peterongan  
Jombang, Jawa Timur 60281  
T. +62 321 873655  
F. +62 321 875771

**STIE "AUB" Surakarta**

Jl. Mr. Sartono 97, Cengklik  
Nusukan, Surakarta 57135  
T. +62 271 854803  
F. +62 271 853084

**Universitas Surabaya**

Jl. Raya Kalirungkut  
Surabaya 60293  
T. +62 31 298 1203  
F. +62 31 298 1204

**Universitas Muhammadiyah  
Gresik**

Jl. Sumatra 101 GKB  
Gresik 61121  
T. +62 31 395 1414  
F. +62 31 395 2585

**Universitas Negeri Malang**

Jl. Surabaya No. 6  
Malang 65145  
T. +62 341 585914  
F. +62 341 55288

**Universitas Muhammadiyah  
Malang**

Jl. Raya Tlogomas 246  
Malang 65144  
T. +62 341 464318-9  
F. +62 341 460782

**FSEI IAIN Antasari**

Jl. Ahmad Yani Km. 4,5  
Banjarmasin  
T. + 62 511 3265783

**STIE Malangkececwara**

Jl. Terusan Candi Kalasan  
Malang 65142  
T. +62 341 491813  
F. +62 341 495619

**STIESIA Surabaya**

Jl. Menur Pumpungan 30  
Surabaya  
T. +62 31 5947505  
F. +62 31 5932218

**Universitas 17 Agustus  
1945 Banyuwangi**

Jl. Adi Sucipto 26  
Banyuwangi, Jawa Timur  
T. +62 333 419613  
F. +62 333 419163

**STIE Tri Bhakti**

Jl. Teuku Umar No. 24  
Cut Meutia Setiakawan,  
Bekasi  
T. +62 21 82429400,  
82429500  
F. +62 271 726156

**Universitas Islam  
Kalimantan**

Jl. Adiyaksa No. 2, Kayu  
Tangi, Banjarmasin  
T. + 62 511 3303871  
F. + 62 511 3303871

**STIKOM Bali**

Jalan Puputan No. 86, Renon,  
Denpasar  
T. +62361 244445  
F. +62361 264773

**Universitas Muhammadiyah  
Pontianak**

Fakultas Ekonomi UM  
Pontianak  
Jl. Ahmad Yani, No. 111,  
Pontianak 78124  
T. +62561 743465  
F. +62561 766840

**Universitas Negeri  
Makassar**

Fakultas Ekonomi Gedung BT  
Lt.2  
Jl. A.P. Pettarani, Kampus  
UNM, Gunungsari Baru  
Makassar 90222  
T. +62 411 889464 / 881244  
F. +62 411 887604

**STIE AAS Surakarta**

Jl. Slamet Riyadi No. 361,  
Kartasura, Surakarta  
T. +62 271 726156  
F. +62 271 726156

**UPN "Veteran" Yogyakarta**

Jl. Babarsari 2, Tambak Bayan  
Yogyakarta  
T. +62 274 485268  
F. +62 274 487147

**Disclaimer:**

Information, opinions and recommendations contained in this document are presented by PT Reliance Sekuritas Indonesia Tbk. from sources that are considered reliable and dependable. This document is not an offer, invitation or any kind of representations to decide to buy or sell stock. Investment decisions taken based on this document is not the responsibility of PT Reliance Sekuritas Indonesia Tbk. PT Reliance Sekuritas Indonesia Tbk. reserves the right to change the contents of this document at any time without prior notice.