

## IHSG



5669.44  
22.075  
0.39%

Vol (Mn): 6810  
Val (Bn): 11572

## LQ45



942.98  
6.43  
0.69%

Sector Indices	Last	Change	Change %
Agriculture	1793.49	(21.92)	(1.22)
Basic Industry	604.56	5.00	0.83
Consumer	2461.25	8.98	0.36
Finance	904.62	11.47	1.27
Infrastructure	1138.23	7.39	0.65
Manufacture	1472.87	4.20	0.29
Mining	1442.74	(22.78)	(1.58)
Misc Industry	1486.24	(8.00)	(0.54)
Property	495.56	1.82	0.37
Trade	905.23	(4.68)	(0.52)

Source: relitrade next G

Most Active	Last	Change %	Freq
SRIL	314	5.4	28,307
KOBX	117	1.7	22,982
INDY	1,125	22.3	13,050
PTPP	2,700	(4.9)	10,578
KBLI	488	(12.9)	8,857

Most Volume	Last	Change %	M share
MYRX	135	0.7	10,884
SRIL	314	5.4	5,934
RIMO	150	(5.7)	4,528
DEWA	54	(10.0)	3,947
BUMI	408	(4.7)	3,227

Most Value	Last	Change %	Rp Bil
BBRI	13,925	(0.5)	549.18
BBCA	17,825	0.8	438.99
TLKM	4,370	(2.2)	438.15
BMRI	11,700	(0.1)	393.09
PTPP	2,700	2.7	295.16

Source: relitrade next G

## IHSG Technical Review



R3	6030
R2	5860
R1	5700
Last	5669.44
S1	5540
S2	5400
S3	5285

**Comment:**  
Bullish consolidation at MA25 support level. Reversal signal for short term trading.

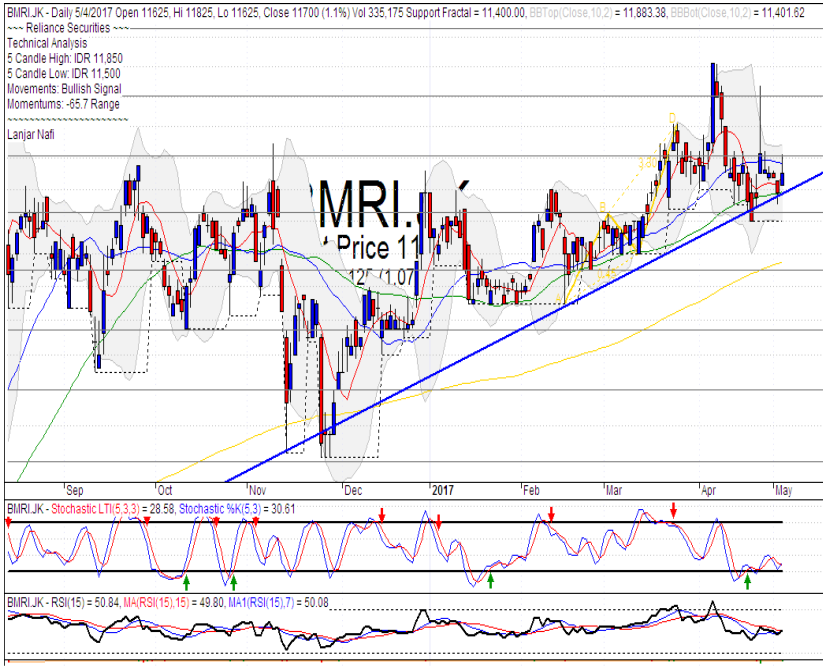
Stochastic, still bearish movement at near oversold.

RSI consolidations at near overbought oscillator.

Long term bullish trend movement.

Upside target to 5700. Stop-loss if broke the MA25 support level at 5620.

## BMRI



R3	12650
R2	12200
R1	11800
Last	11700
S1	11450
S2	11100
S3	10750

**TRADING BUY**

**Comment:**  
 Rebounded at bullish trend line and MA50 support level. Above the stomach candlestick pattern.

Stochastic, golden-cross indications at oversold oscillator.

RSI consolidations momentum at near oversold oscillator.

Long term bullish trend movement.

Upside target to 12200. Stop-loss if broke the bullish trend support level at 11400.

## RALS



R3	1510
R2	1410
R1	1315
Last	1305
S1	1235
S2	1165
S3	1070

**SELL**

**Comment:**  
 Bearish engulfing candlestick pattern after reached the triangle target level.

Stochastic dead-cross at overbought oscillator. broad downside potential.

RSI bearish reversal momentum at overbought.

Short term bullish trend movement.

Stop-loss if broke the MA7 support level at 1270. Downside potential until MA25 support level at 1180.

## BEST



R3	346
R2	324
R1	302
Last	290
S1	286
S2	262
S3	244
<b>SPECULATIVE BUY</b>	

### Comment:

Bullish harami candlestick pattern at support level. Reversal signal.

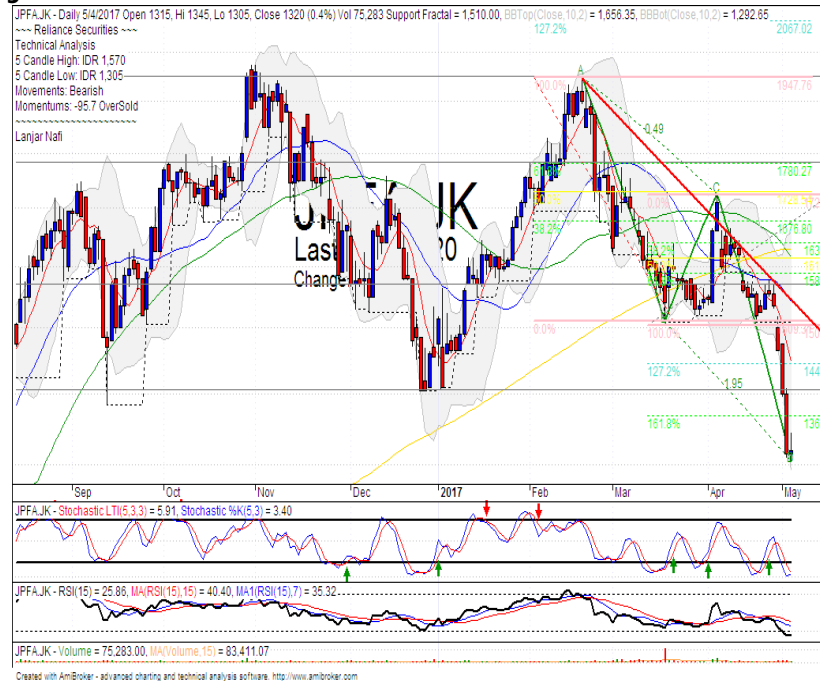
Stochastic golden-cross at oversold oscillator.

RSI bullish reversal momentum at the oversold oscillator.

Medium term bearish trend movement.

Upside target to bearish trend line resistance level at 306. Stop-loss if broke the channeling support level at 272.

## JPPFA



R3	1780
R2	1570
R1	1400
Last	1320
S1	1260
S2	1150
S3	1060
<b>SPECULATIVE BUY</b>	

### Comment:

Bullish harami candlestick pattern after decline significant.

Stochastic arrived at oversold wait for golden-cross confirmations.

RSI oversold momentum.

Medium term bearish trend movement.

Upside target to 1370 until 1445. Stop-loss if broke the support level at 1250. Recommended buying price if reversal confirmations at 1340.

Stocks	S2	S1	Closing Price	R1	R2	Technical Notes	Rec	Stop Loss	Rec Buy Prc	Target Price
<b>Plantation</b>										
AALI	13,000	14,000	14,100	14,900	15,850	Consolidations	W	14,000		
LSIP	1,250	1,300	1,370	1,405	1,545	Consolidations	W	1,350		
<b>Mining</b>										
INCO	1,800	1,965	2,050	2,120	2,300	Consolidations	W	1,960		
<b>Consumer</b>										
UNVR	42,500	44,000	45,425	46,000	47,800	Consolidations	H	45,000		46,000
INDF	7,250	7,900	8,475	8,500	9,125	Overbought	PS	8,200		
KLBF	1,490	1,540	1,575	1,600	1,650	Consolidations	H	1,500		1,600
<b>Trading</b>										
ACES	870	920	950	970	1,030	Consolidations	H	940		970
AKRA	5,800	6,100	6,300	6,350	6,600	Bearish momentum	S	6,000		
UNTR	22,500	24,000	25,050	25,325	26,750	Oversold	W	25,000		
<b>Property &amp; Construction</b>										
LPCK	4,300	4,450	4,490	4,610	4,810	Consolidations	W	4,440		
WIKA	1,990	2,200	2,230	2,400	2,600	Bearish momentum	S	2,210		
BSDE	1,630	1,720	1,775	1,830	1,935	Pulled back bearish trend	S	1,750		
WSKT	2,120	2,260	2,290	2,410	2,600	Bearish momentum	S	2,250		
ADHI	1,950	2,070	2,160	2,200	2,300	Oversold	W	2,050		
<b>Basic Industry &amp; Chemical</b>										
SMGR	7,500	8,150	8,650	8,725	9,350	Consolidations	W	8,500		
CPIN	2,850	3,000	3,140	3,210	3,400	Stoch golden-cross	TB	3,100		3,420
MAIN	1,000	1,065	1,065	1,070	1,130	Break out support level	W	1,050		
INTP	14,600	15,500	16,225	16,350	17,500	Break out support level	W	16,000		
<b>Miscellaneous</b>										
SRIL	270	288	314	316	350	Stoch golden-cross	B	284	312	350
ASII	8,250	8,650	8,800	9,000	9,500	Bearish momentum	S	8,700		
<b>Finance</b>										
BBTN	2,100	2,200	2,350	2,360	2,480	Consolidations	H	2,180		2,360
BMRI	11,100	11,450	11,700	11,800	12,200	Consolidations	SB	11,500		12,400
BTPN	2,340	2,550	2,580	2,770	3,000	Oversold	W	2,540		
BJBR	1,750	1,915	2,000	2,140	2,210	Stoch golden-cross	TB	1,910		2,140
BBRI	13,000	13,500	13,925	14,000	14,725	Broke resistance level	H	13,800		14,000
<b>Infrastructure</b>										
TLKM	3,950	4,200	4,370	4,400	4,570	Bearish momentum	S	4,300		
PGAS	2,200	2,360	2,420	2,550	2,800	Consolidations	W	2,380		

Source : Reliance Sekuritas Indonesia

## Analyst Conclusions:

The index has trying strong support level. Waiting for rebound signal or break out confirmations.

Legend :

- B: BUY (allocate till 100% of the weighted capital to accumulate, higher than 50% upside probability)
- SB: SPECULATIVE BUY (allocate 25%-50% of the weighted capital to accumulate, 25%-50% upside probability)
- W: WAIT (wait for proper entry level, do the stop-loss if necessary)
- H: HOLD (hold the portfolio position, aim for the best price to distribute)
- PS: PARTIAL SELL (distribute 25%-50% part of the portfolio, 25%-50% downside probability)
- S: SELL (distribute till 100% of the portfolio, higher than 50% downside probability)
- TB: TRADING BUY (short term or intraday trading within a tight trading range. Highly speculative).

Ticker	Resistance	Price	Support	Weekly	Weekly	Indicator			Moving Average			
	Fractal	5/4/2017	Fractal	High	Low	Stochastic	RSI	B. Band	25 Days	50 Days	200 Days	
AALIJK	14,950	14,100	14,400	14,625	14,225	Oversold	Bearish	Neutral	Lower Bands	Under	Under	Under
ACESJK	965	950	880	960	930	Neutral	Bearish	Neutral	Middle Bands	Upper	Upper	Upper
ADHIJK	2,330	2,160	2,220	2,330	2,200	Oversold	Bearish	Neutral	Middle Bands	Under	Under	Under
ADROJK	1,885	1,615	1,850	1,850	1,660	Oversold	Bearish	Oversold	Lower Bands	Under	Under	Upper
AISAJK	2,280	2,300	2,100	2,370	2,200	Neutral	Bullish	Neutral	Middle Bands	Upper	Upper	Upper
AKRAJK	6,900	6,300	6,350	6,900	6,425	Neutral	Bearish	Neutral	Middle Bands	Under	Under	Under
ANTMJK	715	645	695	715	670	Oversold	Bearish	Oversold	Lower Bands	Under	Under	Under
APLNJK	240	206	208	214	208	Oversold	Bearish	Neutral	Middle Bands	Under	Under	Under
ASIIJK	9,350	8,800	8,350	9,075	8,900	Neutral	Bearish	Neutral	Middle Bands	Upper	Upper	Upper
ASRIJK	360	338	346	352	340	Oversold	Bearish	Neutral	Lower Bands	Under	Under	Under
BBCAJK	18,000	17,825	16,700	18,000	17,625	Neutral	Bullish	Neutral	Middle Bands	Upper	Upper	Upper
BBKPKJ	655	625	625	650	635	Neutral	Bearish	Neutral	Middle Bands	Under	Upper	Under
BBNIJK	6,450	6,625	6,075	6,625	6,400	Overbought	Bullish	Neutral	Upper Bands	Upper	Upper	Upper
BBRIJK	13,225	13,925	12,900	13,925	13,125	Neutral	Bullish	Overbought	Upper Bands	Upper	Upper	Upper
BBTNJK	2,390	2,350	2,230	2,350	2,300	Neutral	Bullish	Neutral	Upper Bands	Upper	Upper	Upper
BDMNJK	5,025	4,950	4,420	5,025	4,790	Overbought	Bearish	Neutral	Middle Bands	Upper	Upper	Upper
BHITJK	128	117	119	122	120	Oversold	Bearish	Oversold	Middle Bands	Under	Under	Under
BJBRJK	2,240	2,000	2,000	2,060	2,030	Oversold	Bullish	Neutral	Middle Bands	Under	Under	Upper
BJTMJK	720	665	665	710	680	Neutral	Bearish	Neutral	Middle Bands	Under	Upper	Upper
BKSLJK	100	83	87	89	84	Oversold	Bearish	Oversold	Lower Bands	Under	Under	Under
BMRIJK	12,275	11,700	11,400	11,850	11,650	Neutral	Bullish	Neutral	Middle Bands	Under	Upper	Upper
BMTRJK	550	585	525	590	540	Neutral	Bullish	Overbought	Upper Bands	Upper	Upper	Under
BSDEJK	1,840	1,775	1,750	1,820	1,775	Oversold	Bullish	Neutral	Middle Bands	Under	Under	Under
BTPNJK	2,650	2,580	2,580	2,650	2,590	Oversold	Bearish	Neutral	Middle Bands	Under	Under	Under
BWPTJK	394	296	318	328	308	Oversold	Bearish	Neutral	Middle Bands	Under	Under	Upper
CMNPJK	1,420	1,385	1,385	1,420	1,395	Oversold	Bearish	Neutral	Middle Bands	Under	Under	Under
CPINJK	3,400	3,140	3,180	3,330	3,160	Oversold	Bullish	Neutral	Middle Bands	Under	Under	Under
CSAPJK	464	450	448	468	456	Neutral	Bearish	Neutral	Middle Bands	Under	Under	Under
CTRAJK	1,320	1,230	1,080	1,300	1,235	Neutral	Bearish	Neutral	Middle Bands	Upper	Under	Under
DILDJK	442	424	420	442	426	Neutral	Bearish	Neutral	Middle Bands	Under	Under	Under
EXCLJK	3,270	3,180	3,080	3,270	3,120	Neutral	Bearish	Neutral	Middle Bands	Upper	Upper	Upper
GGRMJK	68,575	68,000	63,500	68,125	67,000	Overbought	Bullish	Neutral	Middle Bands	Upper	Upper	Upper
GIAAJK	396	344	366	380	360	Oversold	Bearish	Neutral	Lower Bands	Under	Under	Under
GIJLJK	1,045	975	1,020	1,045	995	Oversold	Bearish	Neutral	Lower Bands	Under	Under	Under
HEXAJK	4,600	4,000	4,350	4,460	4,150	Oversold	Bearish	Neutral	Lower Bands	Under	Upper	Upper
HRUMJK	2,650	2,390	2,650	2,450	2,460	Neutral	Bearish	Neutral	Middle Bands	Under	Under	Upper
ICBPJK	8,950	8,600	8,075	8,950	8,650	Neutral	Bearish	Neutral	Middle Bands	Upper	Upper	Under
IMASJK	1,200	1,155	1,095	1,155	1,150	Overbought	Bullish	Neutral	Middle Bands	Under	Under	Under
INCOJK	2,300	2,050	2,140	2,300	2,140	Neutral	Bearish	Neutral	Lower Bands	Under	Under	Under
INDFJK	8,075	8,475	7,925	8,550	8,500	Overbought	Bearish	Overbought	Middle Bands	Upper	Upper	Upper
INDYJK	805	1,125	690	1,130	770	Neutral	Bullish	Overbought	Upper Bands	Upper	Upper	Upper
INTAJK	472	330	446	472	360	Neutral	Bearish	Oversold	Lower Bands	Under	Under	Upper
INTPJK	17,075	16,225	15,800	17,075	16,250	Neutral	Bearish	Neutral	Middle Bands	Under	Upper	Under
ITMGJK	19,850	18,475	18,450	19,800	18,800	Neutral	Bearish	Neutral	Middle Bands	Under	Under	Upper
JFPAJK	1,580	1,320	1,510	1,570	1,345	Oversold	Bearish	Oversold	Lower Bands	Under	Under	Under
JSMRJK	4,700	4,650	4,400	4,700	4,460	Neutral	Bearish	Neutral	Middle Bands	Upper	Upper	Under
KUJAJK	340	326	326	332	328	Neutral	Bullish	Neutral	Lower Bands	Under	Upper	Upper
KLBFJK	1,615	1,575	1,515	1,615	1,555	Neutral	Bearish	Neutral	Middle Bands	Upper	Upper	Under
KRASJK	605	555	570	605	560	Oversold	Bearish	Neutral	Middle Bands	Under	Under	Under
LPCKJK	4,750	4,490	4,090	4,750	4,370	Neutral	Bearish	Neutral	Middle Bands	Upper	Upper	Under
LPKRJK	815	785	775	810	795	Neutral	Bearish	Neutral	Middle Bands	Upper	Upper	Under
LPPFJK	15,150	15,275	13,025	15,300	14,900	Overbought	Bullish	Overbought	Upper Bands	Upper	Upper	Under
LSIPJK	1,405	1,370	1,355	1,420	1,380	Neutral	Bearish	Neutral	Middle Bands	Under	Under	Under
MAINJK	1,265	1,065	1,225	1,250	1,115	Oversold	Bearish	Oversold	Lower Bands	Under	Under	Under
MAPIJK	6,475	6,350	6,125	6,500	6,450	Neutral	Bearish	Neutral	Middle Bands	Upper	Upper	Upper
MASAJK	244	236	226	252	234	Oversold	Bearish	Neutral	Middle Bands	Under	Upper	Upper
MNCNJK	1,820	1,900	1,720	1,900	1,820	Overbought	Bearish	Neutral	Middle Bands	Upper	Upper	Upper
MPPAJK	1,010	880	915	1,010	930	Neutral	Bearish	Oversold	Lower Bands	Under	Under	Under
MTLAJK	330	330	326	332	326	Neutral	Bullish	Neutral	Upper Bands	Upper	Upper	Upper
MYORJK	2,140	2,090	1,950	2,180	2,060	Neutral	Bearish	Neutral	Middle Bands	Upper	Upper	Upper
PGASJK	2,520	2,420	2,360	2,490	2,420	Neutral	Bearish	Neutral	Middle Bands	Under	Under	Under
PTBAJK	13,075	11,875	12,300	13,075	12,500	Neutral	Bearish	Neutral	Lower Bands	Under	Under	Upper
RALSJK	1,190	1,305	1,225	1,345	1,310	Overbought	Bearish	Neutral	Middle Bands	Upper	Upper	Upper
ROTIJK	1,655	1,635	1,610	1,670	1,640	Neutral	Bearish	Neutral	Middle Bands	Upper	Upper	Upper
SCMAJK	2,950	2,810	2,730	2,900	2,840	Oversold	Bearish	Neutral	Middle Bands	Under	Under	Upper
SCROJK	2,150	2,050	1,960	2,150	2,100	Neutral	Bearish	Neutral	Middle Bands	Upper	Upper	Upper
SIMPJK	660	605	605	660	630	Neutral	Bearish	Neutral	Lower Bands	Under	Upper	Upper
SMCBJK	940	880	895	905	890	Neutral	Bearish	Neutral	Lower Bands	Under	Under	Under
SMGRJK	9,025	8,650	8,650	9,000	8,725	Neutral	Bearish	Neutral	Middle Bands	Under	Under	Under
SMRAJK	1,415	1,385	1,330	1,400	1,370	Neutral	Bullish	Neutral	Middle Bands	Upper	Upper	Under
SRILJK	392	314	300	320	302	Neutral	Bullish	Neutral	Upper Bands	Under	Under	Upper
SSIAJK	790	750	695	790	740	Neutral	Bearish	Neutral	Middle Bands	Upper	Upper	Upper
SSMSJK	1,725	1,650	1,625	1,750	1,700	Neutral	Bearish	Neutral	Middle Bands	Under	Upper	Upper
TLKMJK	4,450	4,370	4,010	4,450	4,390	Neutral	Bearish	Neutral	Middle Bands	Upper	Upper	Upper
TOTLJK	820	800	790	810	800	Neutral	Bullish	Neutral	Middle Bands	Under	Under	Under
UNTRJK	27,950	25,050	26,150	27,900	26,100	Oversold	Bearish	Neutral	Lower Bands	Under	Under	Upper
UNVRJK	44,000	45,425	44,325	45,800	45,400	Neutral	Bullish	Neutral	Middle Bands	Upper	Upper	Upper

Source : Reliance Research

### Legend :

- Movement: Bullish and Bearish (Indicator Stochastic)
- Momentum: Oversold, Overbought and Neutral (Indicator RSI)
- Resistance Fractal: Strong Resistance
- Support Fractal: Strong Support
- Green: Good Conditions
- Red: Poor Conditions



## HEAD OFFICE

### Reliance Building

Jl. Pluit Sakti Raya No. 27AB,  
Pluit  
Jakarta 14450  
T. +62 21 661 7768  
F. +62 21 661 9884

## RESEARCH DIVISION

### Robertus Yanuar Hardy

*robertus@reliance-securities.com*

### Rio Adrianus

*rio.adrianus@reliance-securities.com*

### Lanjar Nafi Taulat I

*lanjar@reliance-securities.com*

### Aji Setiawan

*aji@reliance-securities.com*

### Shanti Dwi Jayanti

*santi@reliance-securities.com*

Head of Research

Research Analyst

Technical Research Analyst

Associate Research Analyst

Associate Research Analyst

## EQUITY DIVISION

### Jakarta- Pluit

Jl. Pluit Sakti Raya No. 27AB,  
Pluit  
Jakarta 14450  
T. +62 21 661 7768  
F. +62 21 661 9884

### Bandung

Jl.Cisangkuy No.58  
Bandung 40115  
T. +62 22 721 8200  
F. +62 22 721 9255

### Surabaya - Gubeng

Jl. Bangka No. 22  
Surabaya 60281  
T. +62 31 501 1128  
F. +62 31 503 3196

### Makassar

Jl. Boto Lempangan No. 34 J  
Makassar- Sulawesi Selatan  
T. +62 411 3632388  
F. +62 411 3614634

### Jakarta - Sudirman

Menara Batavia Ground Floor  
Jl.KH.Mas Mansyur Kav 126  
Jakarta 10220  
T. +62 21 57905455  
F. +62 21 57950728

### Tasikmalaya

Ruko Tasik Indah Plaza No.21  
Jl. KHZ Mustofa No. 345  
Tasikmalaya 46121  
T. +62 265 345000  
F. +62 265 345003

### Surabaya - Diponegoro

Jl. Diponegoro No.26D  
Surabaya 60261  
T. +62 31 567 0388  
F. +62 31 561 0528

### Medan

Jl. Teuku Amir Hamzah No.40-O  
Medan 20117  
T. +62 61 6638592  
F. +62 61 6638023

### Jakarta - Kebon Jeruk

Plaza Kebon Jeruk  
Jl.Raya Perjuangan Blok A/2  
Jakarta 11530  
T. +62 21 532 4074  
F. +62 21 536 2157

### Malang

Jl. Guntur No. 19  
Malang 65112  
T. +62 341 347 611  
F. +62 341 347 615

### Bali - Denpasar

Dewata Square Blok A3  
Jl. Letda Tantular Renon  
Denpasar 802361  
T. +62 361 225099  
F. +62 361 245099

### Tangerang

Jl. Pahlawan Seribu Ruko BSD  
Sektor 7 Blok RK kav. 9  
Tangerang 15310  
T. +62 21 5387495  
F. +62 21 5387494

### Pekanbaru

Jl. Jendral Sudirman No.73  
Pekanbaru-Riau  
T. +62 761 848414  
F. +62 761 849456

### Pontianak

Jl. MT Haryono No. 6  
Pontianak 78121  
T. +62 561 575674  
F. +62 561 575670

### Jakarta - Centro

Ruko Centro Residence Kav. 4-5  
Tower C Lt. 1 No. 26-29  
Jl. Macan, Daan Mogot  
Jakarta 14450  
T. +62 21 56945227  
F. +62 21 56945226

### Solo

Jl. Slamet Riyadi 330<sup>a</sup>  
Solo 57145  
T. +62 271 736599  
F. +62 271 733478

### Balikpapan

Ruko Bukit Damai Indah  
Blok I, No. 3, Rt.34  
Jl. MT. Haryono, Gunung  
Bahagia, Balikpapan Selatan  
76114  
T. +62 542 746313  
F. +62 542 746317

**IDX CORNER & INVESTMENT GALLERY****President University**

Resto Plaza 1F - Jababeka  
Education Park  
Jl. Ki Hajar Dewantara Raya  
Cikarang - Bekasi 17550  
T. +62 21 89106030

**Universitas Siliwangi  
Tasikmalaya**

Jl. Siliwangi No. 24  
Tasikmalaya 46151  
T. +62 265 323685  
F. +62 265 323534

**Politeknik Kediri**

Jl. Mayor Bismo No. 27  
Kediri 64121  
T. +62 354 683128  
F. +62 354 683128

**Universitas Muhammadiyah  
Sidoarjo**

Jl. Majapahit 666 B  
Sidoarjo, Jawa Timur  
T. +62 31 8945444  
F. +62 31 8949333

**Universitas Tanjungpura  
Pontianak**

Jl. Jendral Ahmad Yani  
Pontianak 78124  
T. +62 561 743465  
F. +62 561 766840

**Universitas Pesantren Tinggi  
Darul Ulum**

Kompleks Pp Darul Ulu,  
Peterongan  
Jombang, Jawa Timur 60281  
T. +62 321 873655  
F. +62 321 875771

**STIE "AUB" Surakarta**

Jl. Mr. Sartono 97, Cengklik  
Nusukan, Surakarta 57135  
T. +62 271 854803  
F. +62 271 853084

**Universitas Surabaya**

Jl. Raya Kalirungkut  
Surabaya 60293  
T. +62 31 298 1203  
F. +62 31 298 1204

**Universitas Muhammadiyah  
Gresik**

Jl. Sumatra 101 GKB  
Gresik 61121  
T. +62 31 395 1414  
F. +62 31 395 2585

**Universitas Negeri Malang**

Jl. Surabaya No. 6  
Malang 65145  
T. +62 341 585914  
F. +62 341 55288

**Universitas Muhammadiyah  
Malang**

Jl. Raya Tlogomas 246  
Malang 65144  
T. +62 341 464318-9  
F. +62 341 460782

**FSEI IAIN Antasari**

Jl. Ahmad Yani Km. 4,5  
Banjarmasin  
T. + 62 511 3265783

**STIE Malangkececwara**

Jl. Terusan Candi Kalasan  
Malang 65142  
T. +62 341 491813  
F. +62 341 495619

**STIESIA Surabaya**

Jl. Menur Pumpungan 30  
Surabaya  
T. +62 31 5947505  
F. +62 31 5932218

**Universitas 17 Agustus  
1945 Banyuwangi**

Jl. Adi Sucipto 26  
Banyuwangi, Jawa Timur  
T. +62 333 419613  
F. +62 333 419163

**STIE Tri Bhakti**

Jl. Teuku Umar No. 24  
Cut Meutia Setiakawan,  
Bekasi  
T. +62 21 82429400,  
82429500  
F. +62 271 726156

**Universitas Islam  
Kalimantan**

Jl. Adiyaksa No. 2, Kayu  
Tangi, Banjarmasin  
T. + 62 511 3303871  
F. + 62 511 3303871

**STIKOM Bali**

Jalan Puputan No. 86, Renon,  
Denpasar  
T. +62361 244445  
F. +62361 264773

**Universitas Muhammadiyah  
Pontianak**

Fakultas Ekonomi UM  
Pontianak  
Jl. Ahmad Yani, No. 111,  
Pontianak 78124  
T. +62561 743465  
F. +62561 766840

**Universitas Negeri  
Makassar**

Fakultas Ekonomi Gedung BT  
Lt.2  
Jl. A.P. Pettarani, Kampus  
UNM, Gunungsari Baru  
Makassar 90222  
T. +62 411 889464 / 881244  
F. +62 411 887604

**STIE AAS Surakarta**

Jl. Slamet Riyadi No. 361,  
Kartasura, Surakarta  
T. +62 271 726156  
F. +62 271 726156

**UPN "Veteran" Yogyakarta**

Jl. Babarsari 2, Tambak Bayan  
Yogyakarta  
T. +62 274 485268  
F. +62 274 487147

**Disclaimer:**

Information, opinions and recommendations contained in this document are presented by PT Reliance Sekuritas Indonesia Tbk. from sources that are considered reliable and dependable. This document is not an offer, invitation or any kind of representations to decide to buy or sell stock. Investment decisions taken based on this document is not the responsibility of PT Reliance Sekuritas Indonesia Tbk. PT Reliance Sekuritas Indonesia Tbk. reserves the right to change the contents of this document at any time without prior notice.