

IHSG



5683.38
13.934
0.25%

Vol (Mn): 4760
Val (Bn): 3568

LQ45



945.97
2.99
0.32%

Sector Indices	Last	Change	Change %
Agriculture	1796.32	2.83	0.16
Basic Industry	604.93	0.37	0.06
Consumer	2483.57	22.32	0.90
Finance	907.65	3.03	0.33
Infrastructure	1132.27	(5.96)	(0.53)
Manufacture	1478.29	5.42	0.37
Mining	1417.51	(25.24)	(1.78)
Misc Industry	1470.94	(15.30)	(1.04)
Property	501.90	6.34	1.26
Trade	912.34	7.11	0.78

Source: relitrade next G

Most Active	Last	Change %	Freq
SRIL	338	7.6	67,251
LMAS	73	(11.0)	33,975
INDY	1,260	12.0	14,322
PTPP	2,980	10.4	10,471
AGRO	800	16.8	10,012

Most Volume	Last	Change %	M share
MYRX	132	(2.2)	12,415
SRIL	338	7.6	10,154
BUMI	398	(2.5)	5,979
DEWA	50	(7.4)	4,274
INDY	1,260	12.0	3,110

Most Value	Last	Change %	Rp Bil
BMRI	11,975	(0.6)	440.53
PTPP	2,980	5.3	433.10
INDY	1,260	(7.4)	386.26
SRIL	338	(1.7)	335.05
ASII	8,700	0.8	258.81

Source: relitrade next G

IHSG Technical Review



R3	6030
R2	5860
R1	5700
Last	5683.38
S1	5540
S2	5400
S3	5285

Comment:
Bullish consolidation at MA7 resistance level.
Consolidations movement in the short term.

Stochastic, still bearish movement at near oversold.

RSI consolidations at near overbought oscillator.

Long term bullish trend movement.

Upside target to 5700. Stop-loss if broke the MA25 support level at 5620.

AKRA



R3	7325
R2	7000
R1	6625
Last	6450
S1	6350
S2	6100
S3	5800
SPECULATIVE BUY	

Comment:

Rebounded at bullish trend support level after declined significant.

Stochastic, golden-cross indications at oversold oscillator.

RSI consolidations momentum at near oversold oscillator.

Medium term bullish trend movement.

Upside target to 6900 (Upper Bollinger bands). Stop-loss if broke the bullish trend support level at 6275.

BBRI



R3	15500
R2	14725
R1	14000
Last	13925
S1	13200
S2	12400
S3	11800
PARTIAL SELL	

Comment:

Hanging man candlestick pattern. Reversal signal. Moderate trading volume.

Stochastic dead-cross indications at overbought oscillator. broad downside potential.

RSI bearish reversal momentum at overbought.

Long term bullish trend movement.

Stop-loss if confirmations the bearish reversal signal at 13750. Corrections target to MA50 and bullish trend support level at 12650.

ELSA



R3	424
R2	384
R1	346
Last	340
S1	320
S2	300
S3	280
SPECULATIVE BUY	

Comment:

Dragon fly candlestick pattern. Bullish reversal signal.

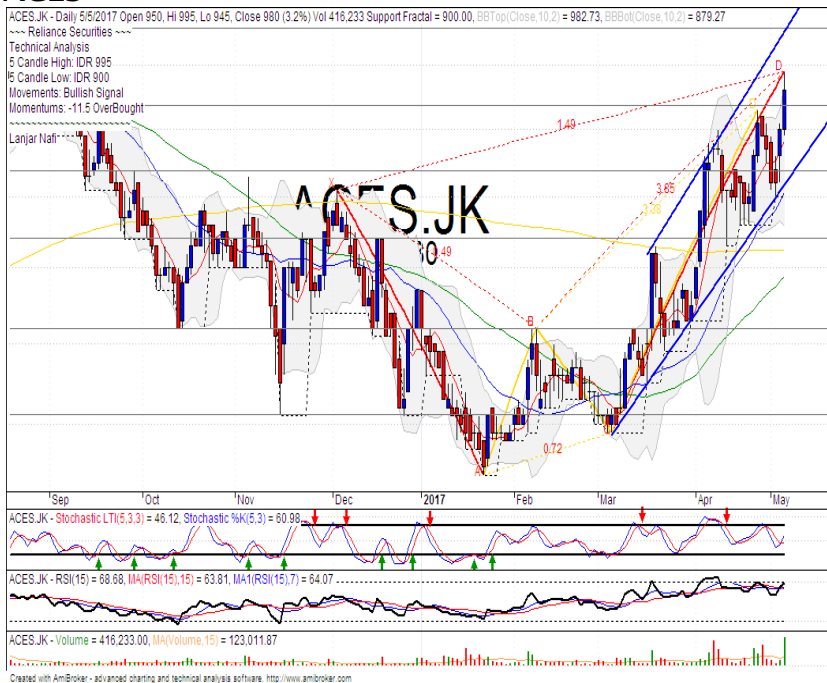
Stochastic golden-cross at oversold oscillator.

RSI bullish reversal momentum at the oversold oscillator.

Long term bearish trend movement.

Upside target to bearish trend line resistance level at 396. Stop-loss if false confirmations at 330.

ACES



R3	1175
R2	1090
R1	1030
Last	980
S1	970
S2	920
S3	870
HOLD	

Comment:

Bullish momentum and trying reach to bullish trend channeling resistance level.

Stochastic bullish movement after consolidations at middle state.

RSI bullish momentum at overbought oscillator.

Medium term bullish trend movement.

Upside target to 1030. Stop-loss if broke the support level at 965.

Stocks	S2	S1	Closing Price	R1	R2	Technical Notes	Rec	Stop Loss	Rec Buy Prc	Target Price
Plantation										
AALI	13,000	14,000	14,150	14,900	15,850	Consolidations	W	14,000		
LSIP	1,250	1,300	1,380	1,405	1,545	Consolidations	W	1,350		
Mining										
INCO	1,800	1,965	1,980	2,120	2,300	Consolidations	W	1,960		
Consumer										
UNVR	42,500	44,000	45,475	46,000	47,800	Consolidations	H	45,000		46,000
INDF	7,250	7,900	8,475	8,500	9,125	Stoch dead-cross	PS	8,200		
KLBF	1,490	1,540	1,550	1,600	1,650	Consolidations	W	1,500		
Trading										
ACES	920	970	980	1,030	1,090	Break out resistance level	H	960		1,030
AKRA	6,100	6,350	6,450	6,600	7,000	Rebounded at bullish trend	TB	6,400		6,800
UNTR	22,500	24,000	25,050	25,325	26,750	Bullish homing pigeon	TB	25,000		27,500
Property & Construction										
LPCK	4,450	4,600	4,800	4,800	5,125	Break out resistance level	H	4,780		5,000
WIKA	1,990	2,200	2,290	2,400	2,600	Consolidations	W	2,280		
BSDE	1,630	1,720	1,815	1,830	1,935	Consolidations	H	1,750		1,830
WSKT	2,120	2,260	2,330	2,410	2,600	Consolidations	H	2,320		2,450
ADHI	2,070	2,200	2,250	2,300	2,420	Stoch golden-cross	TB	2,230		2,420
Basic Industry & Chemical										
SMGR	8,150	8,725	8,800	9,350	9,900	Stoch golden-cross	TB	8,700		9,350
CPIN	2,850	3,000	3,070	3,210	3,400	Oversold	TB	3,050		3,300
MAIN	950	1,000	1,060	1,065	1,130	Oversold	W	1,050		
INTP	15,500	16,350	16,400	17,500	18,400	Rebounded at MA50	W	16,300		
Miscellaneous										
SRIL	288	316	338	350	400	Stoch golden-cross	H	332		350
ASII	8,250	8,650	8,700	9,000	9,500	Oversold	W	8,700		
Finance										
BBTN	2,100	2,200	2,340	2,360	2,480	Consolidations	H	2,180		2,360
BMRI	11,450	11,800	11,975	12,200	12,650	Bullish momentum	SB	11,800		12,400
BTPN	2,340	2,550	2,590	2,770	3,000	Oversold	W	2,540		
BJBR	1,750	1,915	1,995	2,140	2,210	Stoch golden-cross	TB	1,910		2,140
BBRI	13,000	13,500	13,925	14,000	14,725	Hanging man	PS	13,800		
Infrastructure										
TLKM	3,950	4,200	4,340	4,400	4,570	Bearish momentum	W	4,300		
PGAS	2,200	2,360	2,390	2,550	2,800	Consolidations	W	2,380		

Source : Reliance Sekuritas Indonesia

Analyst Conclusions:

The index has trying strong support level. Waiting for rebound signal or break out confirmations.

Legend :

- B: BUY (allocate till 100% of the weighted capital to accumulate, higher than 50% upside probability)
- SB: SPECULATIVE BUY (allocate 25%-50% of the weighted capital to accumulate, 25%-50% upside probability)
- W: WAIT (wait for proper entry level, do the stop-loss if necessary)
- H: HOLD (hold the portfolio position, aim for the best price to distribute)
- PS: PARTIAL SELL (distribute 25%-50% part of the portfolio, 25%-50% downside probability)
- S: SELL (distribute till 100% of the portfolio, higher than 50% downside probability)
- TB: TRADING BUY (short term or intraday trading within a tight trading range. Highly speculative).

Ticker	Resistance	Price	Support	Weekly	Weekly	Indicator			Moving Average			
	Fractal	5/5/2017	Fractal	High	Low	Stochastic	RSI	B. Band	25 Days	50 Days	200 Days	
AALIJK	14,950	14,150	14,400	14,625	14,225	Oversold	Bullish	Neutral	Middle Bands	Under	Under	Under
ACESJK	965	980	900	995	930	Neutral	Bullish	Neutral	Upper Bands	Upper	Upper	Upper
ADHIJK	2,330	2,250	2,150	2,320	2,200	Oversold	Bullish	Neutral	Middle Bands	Under	Under	Under
ADROJK	1,885	1,560	1,850	1,850	1,620	Oversold	Bearish	Oversold	Lower Bands	Under	Under	Upper
AISAJK	2,370	2,240	2,100	2,370	2,240	Neutral	Bearish	Neutral	Middle Bands	Upper	Upper	Upper
AKRAJK	6,900	6,450	6,350	6,850	6,425	Neutral	Bearish	Neutral	Middle Bands	Under	Upper	Under
ANTMJK	715	630	695	715	640	Oversold	Bearish	Oversold	Lower Bands	Under	Under	Under
APLNJK	240	204	208	214	208	Oversold	Bearish	Neutral	Middle Bands	Under	Under	Under
ASIIJK	9,350	8,700	8,350	9,075	8,775	Oversold	Bearish	Neutral	Middle Bands	Under	Upper	Upper
ASRIJK	360	340	346	352	340	Oversold	Bullish	Neutral	Middle Bands	Under	Under	Under
BBCAJK	18,000	17,775	16,700	18,000	17,775	Neutral	Bearish	Neutral	Middle Bands	Upper	Upper	Upper
BBKPKJK	655	615	625	645	630	Oversold	Bearish	Neutral	Lower Bands	Under	Under	Under
BBNIJK	6,450	6,575	6,075	6,625	6,400	Oversold	Bearish	Neutral	Upper Bands	Upper	Upper	Upper
BBRIJK	13,225	13,925	12,900	14,000	13,125	Neutral	Bullish	Oversold	Upper Bands	Upper	Upper	Upper
BBTNJK	2,390	2,340	2,230	2,370	2,300	Neutral	Bullish	Neutral	Middle Bands	Upper	Upper	Upper
BDMNJK	5,025	4,920	4,420	5,025	4,930	Neutral	Bearish	Neutral	Middle Bands	Upper	Upper	Upper
BHITJK	128	122	117	123	120	Oversold	Bullish	Neutral	Middle Bands	Under	Under	Under
BJBRJK	2,060	1,995	1,985	2,060	2,030	Neutral	Bullish	Neutral	Middle Bands	Under	Under	Upper
BJTMJK	720	670	665	695	680	Neutral	Bullish	Neutral	Middle Bands	Under	Upper	Upper
BKSLJK	100	82	87	89	84	Oversold	Bearish	Oversold	Lower Bands	Under	Under	Under
BMRIJK	12,275	11,975	11,500	12,125	11,650	Neutral	Bullish	Neutral	Upper Bands	Upper	Upper	Upper
BMTRJK	550	640	530	640	545	Neutral	Bullish	Oversold	Upper Bands	Upper	Upper	Under
BSDEJK	1,840	1,815	1,750	1,825	1,775	Neutral	Bullish	Neutral	Middle Bands	Under	Under	Under
BTPNJK	2,650	2,590	2,580	2,650	2,590	Oversold	Bearish	Neutral	Middle Bands	Under	Under	Under
BWPTJK	394	280	318	326	300	Oversold	Bearish	Oversold	Middle Bands	Under	Under	Upper
CMNPJK	1,420	1,390	1,385	1,420	1,390	Oversold	Bearish	Neutral	Middle Bands	Under	Under	Under
CPINJK	3,400	3,070	3,180	3,280	3,130	Oversold	Bearish	Neutral	Lower Bands	Under	Under	Under
CSAPJK	464	446	448	468	450	Neutral	Bearish	Neutral	Lower Bands	Under	Under	Under
CTRAJK	1,320	1,200	1,080	1,290	1,235	Neutral	Bullish	Neutral	Middle Bands	Under	Under	Under
DILDJK	442	418	420	442	424	Neutral	Bearish	Neutral	Lower Bands	Under	Under	Under
EXCLJK	3,270	3,140	3,080	3,270	3,120	Neutral	Bearish	Neutral	Middle Bands	Upper	Upper	Upper
GGRMJK	68,575	71,400	63,500	71,475	67,250	Oversold	Bullish	Oversold	Upper Bands	Upper	Upper	Upper
GIAAJK	396	344	366	376	350	Oversold	Bearish	Neutral	Middle Bands	Under	Under	Under
GJTLJK	1,045	995	1,020	1,045	995	Oversold	Bullish	Neutral	Middle Bands	Under	Under	Under
HEXAJK	4,600	3,930	4,350	4,420	4,080	Oversold	Bearish	Neutral	Lower Bands	Under	Under	Upper
HRUMJK	2,650	2,360	2,360	2,650	2,390	Oversold	Bearish	Neutral	Middle Bands	Under	Under	Upper
ICBPJK	8,950	8,625	8,075	8,950	8,650	Neutral	Bearish	Neutral	Middle Bands	Upper	Upper	Under
IMASJK	1,200	1,115	1,095	1,155	1,120	Oversold	Bearish	Neutral	Lower Bands	Under	Under	Under
INCOJK	2,300	1,980	2,140	2,300	2,060	Neutral	Bearish	Oversold	Lower Bands	Under	Under	Under
INDFJK	8,550	8,475	7,925	8,550	8,500	Neutral	Bearish	Oversold	Middle Bands	Upper	Upper	Upper
INDYJK	805	1,260	690	1,320	920	Oversold	Bullish	Oversold	Upper Bands	Upper	Upper	Upper
INTAJK	472	338	446	468	338	Oversold	Bullish	Oversold	Upper Bands	Under	Under	Upper
INTPJK	17,075	16,400	15,800	17,025	16,250	Neutral	Bearish	Neutral	Middle Bands	Under	Upper	Under
ITMGJK	19,850	18,400	18,050	19,800	18,800	Oversold	Bearish	Neutral	Middle Bands	Under	Under	Upper
JFPAJK	1,580	1,275	1,510	1,520	1,330	Oversold	Bullish	Oversold	Lower Bands	Under	Under	Under
JSMRJK	4,700	4,740	4,400	4,750	4,640	Neutral	Bullish	Neutral	Middle Bands	Upper	Upper	Upper
KUJAJK	340	322	318	330	326	Neutral	Bullish	Neutral	Lower Bands	Under	Upper	Upper
KLBFJK	1,615	1,550	1,515	1,595	1,555	Neutral	Bullish	Neutral	Middle Bands	Under	Upper	Upper
KRASJK	605	545	570	595	560	Oversold	Bullish	Oversold	Middle Bands	Under	Under	Under
LPCKJK	4,750	4,800	4,090	4,850	4,370	Neutral	Bullish	Neutral	Upper Bands	Upper	Upper	Under
LPKRJK	815	825	775	825	795	Neutral	Bullish	Neutral	Upper Bands	Upper	Upper	Under
LPPFJK	15,150	15,775	13,025	15,850	14,900	Oversold	Bullish	Oversold	Upper Bands	Upper	Upper	Under
LSIPJK	1,405	1,380	1,355	1,420	1,385	Neutral	Bearish	Neutral	Middle Bands	Under	Under	Under
MAINJK	1,265	1,060	1,225	1,245	1,100	Oversold	Bearish	Oversold	Lower Bands	Under	Under	Under
MAPIJK	6,475	6,525	6,125	6,750	6,450	Neutral	Bearish	Neutral	Upper Bands	Upper	Upper	Upper
MASAJK	244	230	226	252	236	Oversold	Bullish	Neutral	Middle Bands	Under	Under	Under
MNCNJK	1,820	1,980	1,720	1,990	1,825	Oversold	Bearish	Oversold	Upper Bands	Upper	Upper	Upper
MPPAJK	1,010	865	915	1,010	890	Neutral	Bearish	Oversold	Lower Bands	Under	Under	Under
MTLAJK	330	330	326	332	326	Neutral	Bearish	Neutral	Middle Bands	Upper	Upper	Upper
MYORJK	2,140	2,180	2,000	2,340	2,060	Neutral	Bullish	Neutral	Upper Bands	Upper	Upper	Upper
PGASJK	2,520	2,390	2,340	2,480	2,420	Neutral	Bullish	Neutral	Middle Bands	Under	Under	Under
PTBAJK	13,075	11,500	12,300	13,075	11,975	Oversold	Bearish	Neutral	Lower Bands	Under	Under	Upper
RALSJK	1,190	1,320	1,225	1,385	1,310	Oversold	Bearish	Neutral	Middle Bands	Upper	Upper	Upper
ROTIJK	1,655	1,640	1,610	1,670	1,640	Neutral	Bullish	Neutral	Middle Bands	Upper	Upper	Upper
SCMAJK	2,950	2,860	2,730	2,900	2,840	Oversold	Bullish	Neutral	Middle Bands	Upper	Upper	Upper
SCROJK	2,150	2,060	1,960	2,150	2,100	Neutral	Bearish	Neutral	Middle Bands	Upper	Upper	Upper
SIMPJK	660	615	605	660	620	Neutral	Bearish	Neutral	Middle Bands	Under	Upper	Upper
SMCBJK	940	885	870	905	890	Neutral	Bearish	Neutral	Lower Bands	Under	Under	Under
SMGRJK	9,025	8,800	8,650	8,875	8,725	Neutral	Bullish	Neutral	Middle Bands	Under	Under	Under
SMRAJK	1,415	1,380	1,330	1,400	1,370	Neutral	Bullish	Neutral	Middle Bands	Upper	Upper	Under
SRILJK	392	338	282	344	302	Neutral	Bullish	Neutral	Upper Bands	Upper	Upper	Upper
SSIAJK	790	750	695	790	740	Neutral	Bearish	Neutral	Middle Bands	Upper	Upper	Upper
SSMSJK	1,725	1,675	1,625	1,750	1,700	Neutral	Bearish	Neutral	Middle Bands	Under	Upper	Upper
TLKMJK	4,450	4,340	4,330	4,450	4,360	Neutral	Bearish	Neutral	Middle Bands	Upper	Upper	Upper
TOTLJK	820	800	790	815	800	Neutral	Bullish	Neutral	Middle Bands	Under	Under	Under
UNTRJK	27,950	25,050	26,150	27,450	25,200	Oversold	Bearish	Neutral	Middle Bands	Under	Under	Upper
UNVRJK	44,000	45,475	44,325	45,850	45,400	Neutral	Bullish	Neutral	Middle Bands	Upper	Upper	Upper

Source : Reliance Research

Legend :

- Movement: Bullish and Bearish (Indicator Stochastic)
- Momentum: Oversold, Overbought and Neutral (Indicator RSI)
- Resistance Fractal: Strong Resistance
- Support Fractal: Strong Support
- Green: Good Conditions
- Red: Poor Conditions

HEAD OFFICE

Reliance Building

Jl. Pluit Sakti Raya No. 27AB,
Pluit
Jakarta 14450
T. +62 21 661 7768
F. +62 21 661 9884

RESEARCH DIVISION

Robertus Yanuar Hardy

robertus@reliance-securities.com

Rio Adrianus

rio.adrianus@reliance-securities.com

Lanjar Nafi Taulat I

lanjar@reliance-securities.com

Aji Setiawan

aji@reliance-securities.com

Shanti Dwi Jayanti

santi@reliance-securities.com

Head of Research

Research Analyst

Technical Research Analyst

Associate Research Analyst

Associate Research Analyst

EQUITY DIVISION

Jakarta- Pluit

Jl. Pluit Sakti Raya No. 27AB,
Pluit
Jakarta 14450
T. +62 21 661 7768
F. +62 21 661 9884

Bandung

Jl.Cisangkuy No.58
Bandung 40115
T. +62 22 721 8200
F. +62 22 721 9255

Surabaya - Gubeng

Jl. Bangka No. 22
Surabaya 60281
T. +62 31 501 1128
F. +62 31 503 3196

Makassar

Jl. Boto Lempangan No. 34 J
Makassar- Sulawesi Selatan
T. +62 411 3632388
F. +62 411 3614634

Jakarta - Sudirman

Menara Batavia Ground Floor
Jl.KH.Mas Mansyur Kav 126
Jakarta 10220
T. +62 21 57905455
F. +62 21 57950728

Tasikmalaya

Ruko Tasik Indah Plaza No.21
Jl. KHZ Mustofa No. 345
Tasikmalaya 46121
T. +62 265 345000
F. +62 265 345003

Surabaya - Diponegoro

Jl. Diponegoro No.26D
Surabaya 60261
T. +62 31 567 0388
F. +62 31 561 0528

Medan

Jl. Teuku Amir Hamzah No.40-O
Medan 20117
T. +62 61 6638592
F. +62 61 6638023

Jakarta - Kebon Jeruk

Plaza Kebon Jeruk
Jl.Raya Perjuangan Blok A/2
Jakarta 11530
T. +62 21 532 4074
F. +62 21 536 2157

Malang

Jl. Guntur No. 19
Malang 65112
T. +62 341 347 611
F. +62 341 347 615

Bali - Denpasar

Dewata Square Blok A3
Jl. Letda Tantular Renon
Denpasar 802361
T. +62 361 225099
F. +62 361 245099

Tangerang

Jl. Pahlawan Seribu Ruko BSD
Sektor 7 Blok RK kav. 9
Tangerang 15310
T. +62 21 5387495
F. +62 21 5387494

Pekanbaru

Jl. Jendral Sudirman No.73
Pekanbaru-Riau
T. +62 761 848414
F. +62 761 849456

Pontianak

Jl. MT Haryono No. 6
Pontianak 78121
T. +62 561 575674
F. +62 561 575670

Jakarta - Centro

Ruko Centro Residence Kav. 4-5
Tower C Lt. 1 No. 26-29
Jl. Macan, Daan Mogot
Jakarta 14450
T. +62 21 56945227
F. +62 21 56945226

Solo

Jl. Slamet Riyadi 330^a
Solo 57145
T. +62 271 736599
F. +62 271 733478

Balikpapan

Ruko Bukit Damai Indah
Blok I, No. 3, Rt.34
Jl. MT. Haryono, Gunung
Bahagia, Balikpapan Selatan
76114
T. +62 542 746313
F. +62 542 746317

IDX CORNER & INVESTMENT GALLERY**President University**

Resto Plaza 1F - Jababeka
Education Park
Jl. Ki Hajar Dewantara Raya
Cikarang - Bekasi 17550
T. +62 21 89106030

**Universitas Siliwangi
Tasikmalaya**

Jl. Siliwangi No. 24
Tasikmalaya 46151
T. +62 265 323685
F. +62 265 323534

Politeknik Kediri

Jl. Mayor Bismo No. 27
Kediri 64121
T. +62 354 683128
F. +62 354 683128

**Universitas Muhammadiyah
Sidoarjo**

Jl. Majapahit 666 B
Sidoarjo, Jawa Timur
T. +62 31 8945444
F. +62 31 8949333

**Universitas Tanjungpura
Pontianak**

Jl. Jendral Ahmad Yani
Pontianak 78124
T. +62 561 743465
F. +62 561 766840

**Universitas Pesantren Tinggi
Darul Ulum**

Kompleks Pp Darul Ulu,
Peterongan
Jombang, Jawa Timur 60281
T. +62 321 873655
F. +62 321 875771

STIE "AUB" Surakarta

Jl. Mr. Sartono 97, Cengklik
Nusukan, Surakarta 57135
T. +62 271 854803
F. +62 271 853084

Universitas Surabaya

Jl. Raya Kalirungkut
Surabaya 60293
T. +62 31 298 1203
F. +62 31 298 1204

**Universitas Muhammadiyah
Gresik**

Jl. Sumatra 101 GKB
Gresik 61121
T. +62 31 395 1414
F. +62 31 395 2585

Universitas Negeri Malang

Jl. Surabaya No. 6
Malang 65145
T. +62 341 585914
F. +62 341 55288

**Universitas Muhammadiyah
Malang**

Jl. Raya Tlogomas 246
Malang 65144
T. +62 341 464318-9
F. +62 341 460782

FSEI IAIN Antasari

Jl. Ahmad Yani Km. 4,5
Banjarmasin
T. + 62 511 3265783

STIE Malangkececwara

Jl. Terusan Candi Kalasan
Malang 65142
T. +62 341 491813
F. +62 341 495619

STIESIA Surabaya

Jl. Menur Pumpungan 30
Surabaya
T. +62 31 5947505
F. +62 31 5932218

**Universitas 17 Agustus
1945 Banyuwangi**

Jl. Adi Sucipto 26
Banyuwangi, Jawa Timur
T. +62 333 419613
F. +62 333 419163

STIE Tri Bhakti

Jl. Teuku Umar No. 24
Cut Meutia Setiakawan,
Bekasi
T. +62 21 82429400,
82429500
F. +62 271 726156

**Universitas Islam
Kalimantan**

Jl. Adiyaksa No. 2, Kayu
Tangi, Banjarmasin
T. + 62 511 3303871
F. + 62 511 3303871

STIKOM Bali

Jalan Puputan No. 86, Renon,
Denpasar
T. +62361 244445
F. +62361 264773

**Universitas Muhammadiyah
Pontianak**

Fakultas Ekonomi UM
Pontianak
Jl. Ahmad Yani, No. 111,
Pontianak 78124
T. +62561 743465
F. +62561 766840

**Universitas Negeri
Makassar**

Fakultas Ekonomi Gedung BT
Lt.2
Jl. A.P. Pettarani, Kampus
UNM, Gunungsari Baru
Makassar 90222
T. +62 411 889464 / 881244
F. +62 411 887604

STIE AAS Surakarta

Jl. Slamet Riyadi No. 361,
Kartasura, Surakarta
T. +62 271 726156
F. +62 271 726156

UPN "Veteran" Yogyakarta

Jl. Babarsari 2, Tambak Bayan
Yogyakarta
T. +62 274 485268
F. +62 274 487147

Disclaimer:

Information, opinions and recommendations contained in this document are presented by PT Reliance Sekuritas Indonesia Tbk. from sources that are considered reliable and dependable. This document is not an offer, invitation or any kind of representations to decide to buy or sell stock. Investment decisions taken based on this document is not the responsibility of PT Reliance Sekuritas Indonesia Tbk. PT Reliance Sekuritas Indonesia Tbk. reserves the right to change the contents of this document at any time without prior notice.