

IHSG



5707.86
24.485
0.43%

Vol (Mn): 7080
Val (Bn): 8800

LQ45



948.97
3.00
0.32%

Sector Indices	Last	Change	Change %
Agriculture	1817.93	21.61	1.19
Basic Industry	618.33	13.40	2.17
Consumer	2459.60	(23.97)	(0.97)
Finance	916.69	9.04	0.99
Infrastructure	1131.53	(0.74)	(0.07)
Manufacture	1479.29	0.99	0.07
Mining	1423.73	6.23	0.44
Misc Industry	1487.74	16.81	1.13
Property	500.14	(1.76)	(0.35)
Trade	922.76	10.42	1.13

Source: relitrade next G

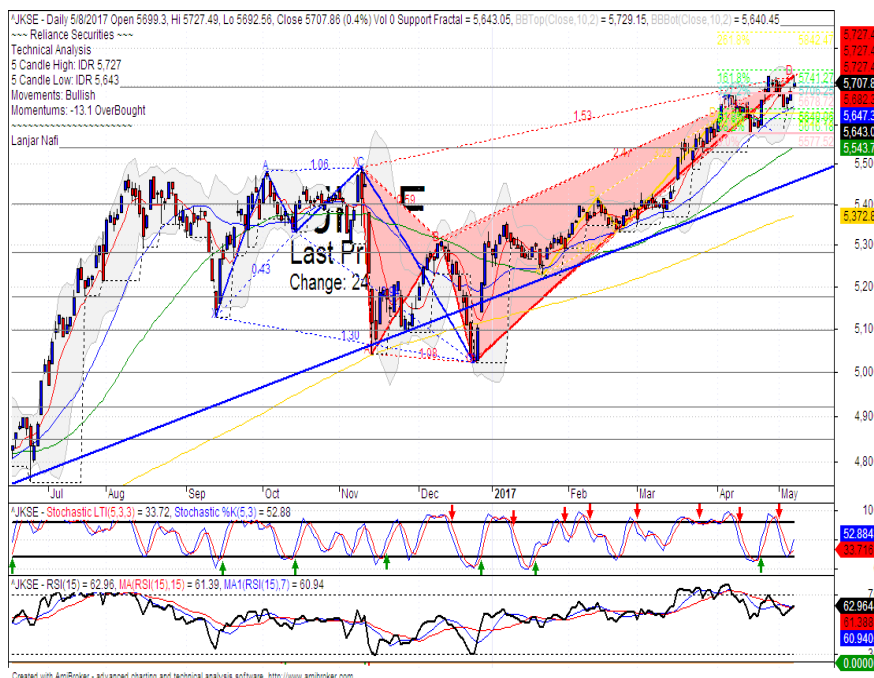
Most Active	Last	Change %	Freq
SRIL	338	0.0	38,136
INDY	1,170	(7.1)	10,468
KBLI	500	4.6	6,534
INPC	95	(2.1)	6,016
PPRO	238	(2.5)	5,611

Most Volume	Last	Change %	M share
MYRX	131	(0.8)	15,082
BUMI	392	0.0	5,851
BRMS	54	(12.9)	5,335
SRIL	324	0.0	5,114
RIMO	142	0.0	4,716

Most Value	Last	Change %	Rp Bil
BBRI	14,100	1.3	514.34
BMRI	12,050	0.6	456.82
TLKM	4,340	0.0	371.84
ASII	8,800	1.1	334.62
INDY	1,170	(7.1)	282.82

Source: relitrade next G

IHSG Technical Review



R3	6200
R2	6030
R1	5860
Last	5707.86
S1	5700
S2	5540
S3	5400

Comment:
Bullish consolidation at resistance level. Consolidations movement in the short term.

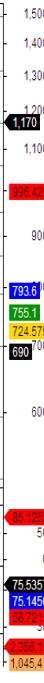
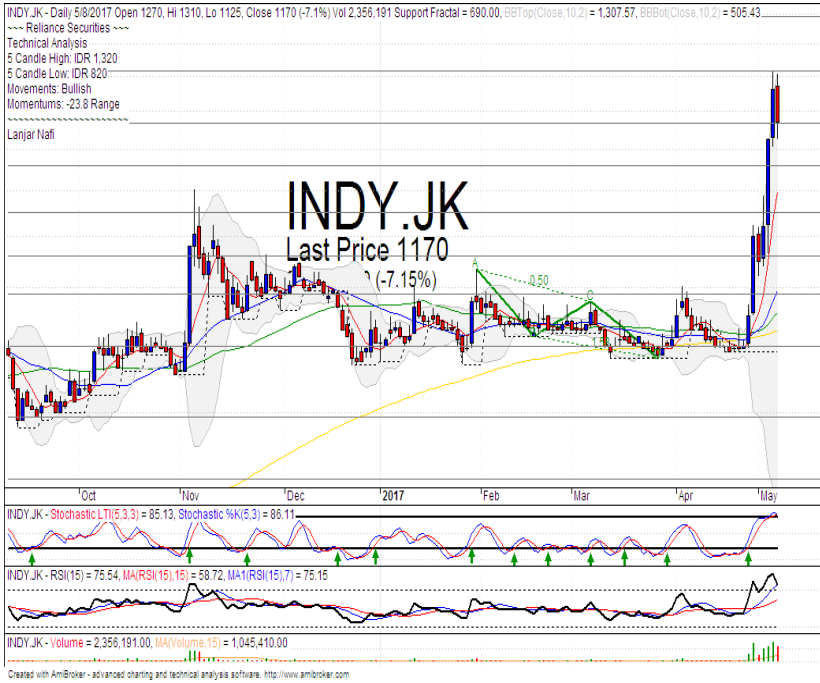
Stochastic, still bearish movement at near oversold.

RSI consolidations at near overbought oscillator.

Long term bullish trend movement.

Upside target to 5700. Stop-loss if broke the MA25 support level at 5620.

INDY



R3	1700
R2	1485
R1	1315
Last	1170
S1	1170
S2	1060
S3	950

SELL

Comment:
Dark cloud cover candlestick pattern. Huge trading volume. Bearish reversal signal.

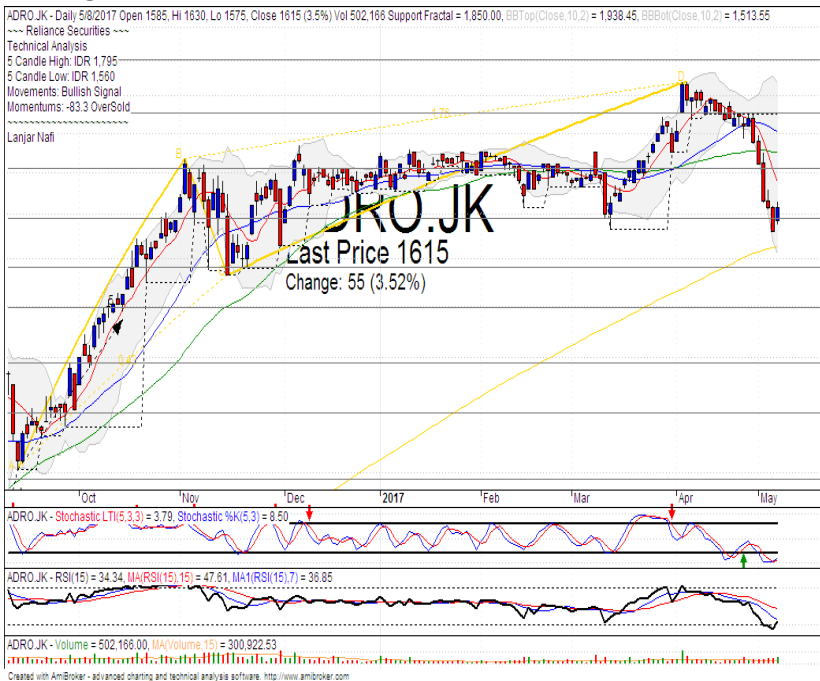
Stochastic, dead-cross at overbought oscillator.

RSI bearish reversal momentum at overbought oscillator.

Short term bullish trend movement.

Stop-loss if broke the support level and confirmations the negative signal at 1150. Corrections potential until MA7 at 995.

ADRO



R3	2000
R2	1850
R1	1710
Last	1615
S1	1590
S2	1480
S3	1400

SPECULATIVE BUY

Comment:
Bullish harami candlestick pattern at MA200 support level.

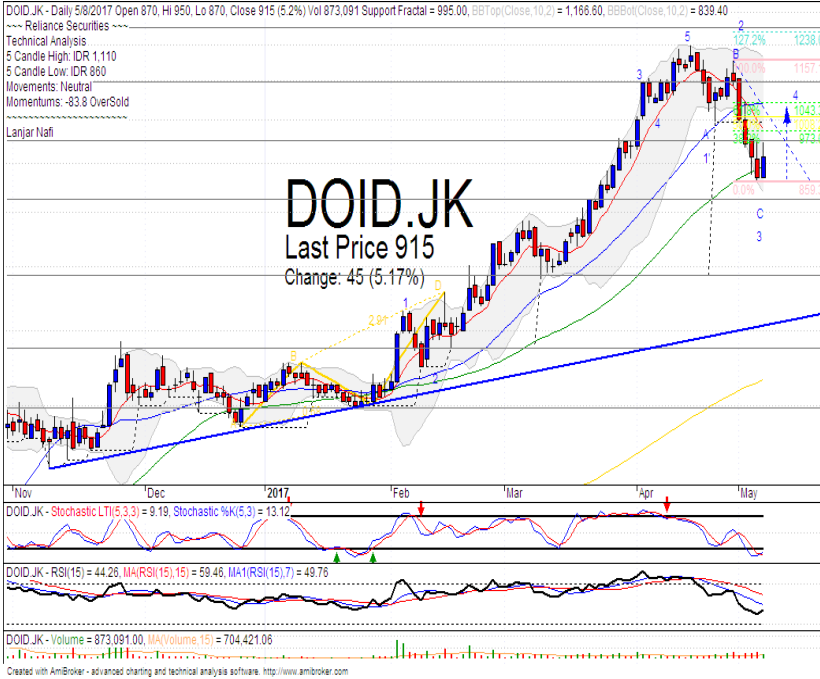
Stochastic golden-cross at oversold oscillator.

RSI bullish reversal momentum signal.

Short term bearish trend movement.

Upside target to MA50 resistance level at 1750. Stop-loss level at 1550 (Broke the support level).

DOID



R3	1255
R2	1100
R1	955
Last	915
S1	825
S2	690
S3	575
SPECULATIVE BUY	

Comment:
Bullish engulfing candlestick pattern. Whipsaw at MA50 support level. wave 4' indications.

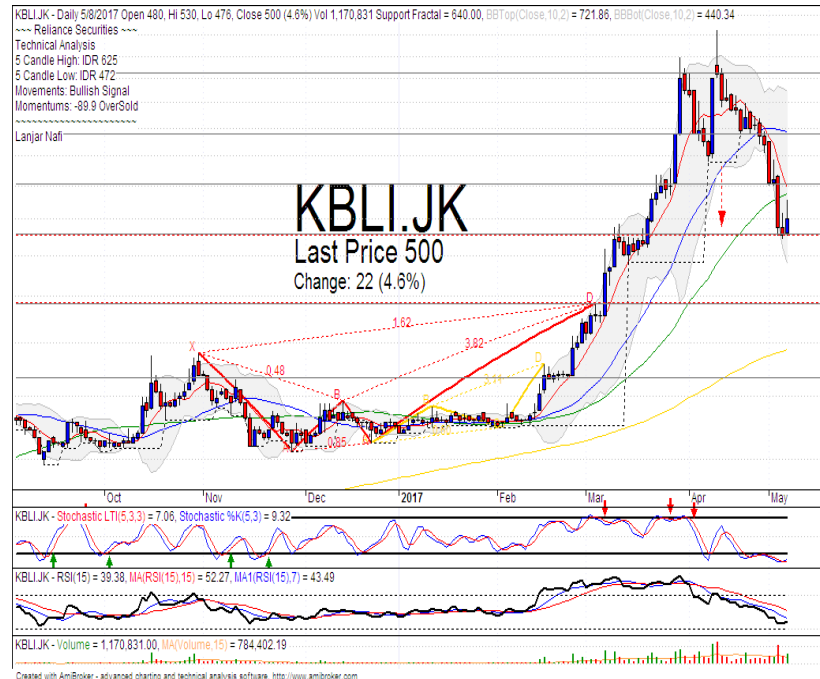
Stochastic golden-cross at oversold oscillator.

RSI bullish reversal momentum at the oversold oscillator.

Short term bearish trend movement.

Upside target to 61.8% Fibonacci of wave 4 at 1045. Stop-loss if broke the MA50 support level at 880.

KLBI



R3	765
R2	640
R1	550
Last	500
S1	480
S2	390
S3	316
TRADING BUY	

Comment:
Bullish engulfing candlestick pattern and whipsaw at support level. Arrived at 1st corrections target.

Stochastic golden-cross at oversold oscillator.

RSI bullish momentum at overbought oscillator.

Medium term bearish trend movement.

Upside target to MA25 resistance level at 645. Stop-loss if broke the support level at 460.

Stocks	S2	S1	Closing Price	R1	R2	Technical Notes	Rec	Stop Loss	Rec Buy Prc	Target Price
Plantation										
AALI	13,000	14,000	14,525	14,900	15,850	Consolidations	TB	14,000		14,900
LSIP	1,300	1,405	1,445	1,475	1,535	Broke resistance level	H	1,430		1,475
Mining										
INCO	1,800	1,965	1,975	2,120	2,300	Bullish homing pigeon	TB	1,960		2,120
Consumer										
UNVR	42,500	44,000	46,000	46,000	47,800	Bullish momentum	H	45,000		46,100
INDF	7,250	7,900	8,450	8,500	9,125	Stoch dead-cross	PS	8,200		
KLBF	1,420	1,490	1,520	1,540	1,600	Consolidations	W	1,500		
Trading										
ACES	920	970	995	1,030	1,090	Bearish momentum	PS	960		
AKRA	6,350	6,600	6,700	7,000	7,300	Bullish momentum	B	6,400		7,000
UNTR	22,500	24,000	25,900	25,325	26,750	Bullish kicker signal	TB	25,000		27,500
Property & Construction										
LPCK	4,600	4,800	4,870	5,125	5,425	Overbought	H	4,780		5,100
WIKA	1,990	2,200	2,280	2,400	2,600	Consolidations	W	2,280		
BSDE	1,630	1,720	1,830	1,830	1,935	Consolidations	H	1,750		1,830
WSKT	2,120	2,260	2,290	2,410	2,600	Consolidations	H	2,320		2,450
ADHI	2,070	2,200	2,230	2,300	2,420	Stoch golden-cross	TB	2,230		2,420
Basic Industry & Chemical										
SMGR	8,150	8,725	8,750	9,350	9,900	Stoch golden-cross	TB	8,700		9,350
CPIN	2,850	3,000	3,120	3,210	3,400	Bullish harami	SB	3,050	3,100	3,300
MAIN	950	1,000	1,065	1,065	1,130	Bullish harami	SB	1,050		1,135
INTP	15,500	16,350	16,775	17,500	18,400	Bullish momentum	H	16,300		17,200
Miscellaneous										
SRIL	288	316	338	350	400	Consolidations	PS	332		
ASII	8,250	8,650	8,800	9,000	9,500	Oversold	TB	8,700		9,000
Finance										
BBTN	2,200	2,360	2,440	2,480	2,580	Consolidations	H	2,360		2,580
BMRI	11,450	11,800	12,050	12,200	12,650	Consolidations	H	11,800		12,400
BTPN	2,340	2,550	2,590	2,770	3,000	Oversold	W	2,540		
BJBR	1,750	1,915	1,995	2,140	2,210	Stoch golden-cross	TB	1,910		2,140
BBRI	13,500	14,000	14,100	14,725	15,500	Overbought	PS	13,800		
Infrastructure										
TLKM	3,950	4,200	4,340	4,400	4,570	Bearish momentum	W	4,300		
PGAS	2,200	2,360	2,420	2,550	2,800	Consolidations	W	2,380		

Source : Reliance Sekuritas Indonesia

Analyst Conclusions:

The index has trying break out all time high level. Consolidations signal at resistance level.

Legend :

- B: BUY (allocate till 100% of the weighted capital to accumulate, higher than 50% upside probability)
- SB: SPECULATIVE BUY (allocate 25%-50% of the weighted capital to accumulate, 25%-50% upside probability)
- W: WAIT (wait for proper entry level, do the stop-loss if necessary)
- H: HOLD (hold the portfolio position, aim for the best price to distribute)
- PS: PARTIAL SELL (distribute 25%-50% part of the portfolio, 25%-50% downside probability)
- S: SELL (distribute till 100% of the portfolio, higher than 50% downside probability)
- TB: TRADING BUY (short term or intraday trading within a tight trading range. Highly speculative).

Ticker	Resistance	Price	Support	Weekly	Weekly	Indicator			Moving Average			
	Fractal	5/8/2017	Fractal	High	Low	Stochastic	RSI	B. Band	25 Days	50 Days	200 Days	
AALIJK	14,950	14,525	14,100	14,600	14,225	Oversold	Bullish	Neutral	Middle Bands	Under	Under	Under
ACESJK	965	995	900	1,010	930	Neutral	Bullish	Overbought	Upper Bands	Upper	Upper	Upper
ADHIJK	2,330	2,230	2,150	2,290	2,200	Neutral	Bullish	Neutral	Middle Bands	Under	Under	Under
ADROJK	1,885	1,615	1,850	1,795	1,620	Oversold	Bullish	Neutral	Middle Bands	Under	Under	Upper
AISAJK	2,370	2,280	2,100	2,370	2,290	Neutral	Bearish	Neutral	Middle Bands	Upper	Upper	Upper
AKRAJK	6,900	6,700	6,350	6,825	6,425	Neutral	Bullish	Neutral	Middle Bands	Upper	Upper	Upper
ANTMJK	715	640	695	705	640	Oversold	Bullish	Overbought	Middle Bands	Under	Under	Under
APLNJK	240	204	208	212	208	Oversold	Bullish	Neutral	Middle Bands	Under	Under	Under
ASIIJK	9,350	8,800	8,675	9,050	8,775	Oversold	Bullish	Neutral	Middle Bands	Upper	Upper	Upper
ASRIJK	360	342	334	352	340	Neutral	Bullish	Neutral	Middle Bands	Under	Under	Under
BBCAJK	18,000	17,950	16,700	18,150	17,825	Neutral	Bearish	Neutral	Middle Bands	Upper	Upper	Upper
BBKPJK	655	640	625	645	630	Neutral	Bullish	Neutral	Middle Bands	Upper	Upper	Upper
BBNIJK	6,450	6,725	6,075	6,800	6,450	Overbought	Bullish	Neutral	Upper Bands	Upper	Upper	Upper
BBRIJK	13,225	14,100	12,900	14,200	13,125	Overbought	Bullish	Overbought	Upper Bands	Upper	Upper	Upper
BBTNJK	2,390	2,440	2,230	2,450	2,300	Neutral	Bullish	Overbought	Upper Bands	Upper	Upper	Upper
BDMNJK	5,025	4,940	4,420	4,990	4,930	Neutral	Bearish	Neutral	Middle Bands	Upper	Upper	Upper
BHITJK	128	120	117	123	120	Neutral	Bullish	Neutral	Middle Bands	Under	Under	Under
BJBRJK	2,060	1,995	1,985	2,060	2,030	Oversold	Bearish	Neutral	Middle Bands	Under	Under	Upper
BJTMJK	720	705	655	710	680	Neutral	Bullish	Neutral	Upper Bands	Upper	Upper	Upper
BKSLJK	100	81	87	89	83	Oversold	Bullish	Overbought	Middle Bands	Under	Under	Under
BMRIJK	12,275	12,050	11,500	12,275	11,650	Neutral	Bullish	Neutral	Upper Bands	Upper	Upper	Upper
BMTRJK	550	620	530	650	550	Overbought	Bullish	Overbought	Upper Bands	Upper	Upper	Under
BSDEJK	1,840	1,830	1,750	1,850	1,775	Neutral	Bullish	Neutral	Middle Bands	Upper	Upper	Under
BTPNJK	2,650	2,590	2,580	2,620	2,590	Oversold	Bullish	Neutral	Middle Bands	Under	Under	Under
BWPTJK	394	294	318	320	300	Oversold	Bullish	Neutral	Middle Bands	Under	Under	Upper
CMNPJK	1,420	1,400	1,385	1,415	1,390	Oversold	Bullish	Neutral	Middle Bands	Under	Under	Under
CPINJK	3,400	3,120	3,180	3,220	3,120	Oversold	Bullish	Neutral	Middle Bands	Under	Under	Under
CSAPJK	464	468	448	480	450	Neutral	Bullish	Neutral	Upper Bands	Upper	Under	Under
CTRAJK	1,320	1,175	1,170	1,280	1,235	Neutral	Bullish	Neutral	Middle Bands	Under	Under	Under
DILDJK	442	418	420	440	424	Neutral	Bearish	Neutral	Lower Bands	Under	Under	Under
EXCLJK	3,270	3,060	3,080	3,240	3,120	Neutral	Bullish	Neutral	Middle Bands	Under	Under	Upper
GGRMJK	68,575	70,000	63,500	71,475	67,250	Overbought	Bearish	Neutral	Middle Bands	Upper	Upper	Upper
GIAAJK	396	350	366	368	350	Oversold	Bullish	Neutral	Middle Bands	Under	Under	Under
GJTLJK	1,045	1,050	1,020	1,070	995	Neutral	Bullish	Neutral	Middle Bands	Under	Under	Under
HEXAJK	4,600	4,000	4,350	4,400	4,000	Oversold	Bullish	Neutral	Middle Bands	Under	Under	Upper
HRUMJK	2,650	2,400	2,400	2,650	2,390	Oversold	Bullish	Neutral	Middle Bands	Under	Under	Upper
ICBPJK	8,950	8,600	8,425	8,775	8,650	Neutral	Bullish	Neutral	Middle Bands	Upper	Upper	Under
IMASJK	1,200	1,130	1,095	1,155	1,120	Neutral	Bearish	Neutral	Middle Bands	Under	Under	Under
INCOJK	2,300	1,975	2,140	2,300	2,040	Oversold	Bearish	Overbought	Lower Bands	Under	Under	Under
INDFJK	8,550	8,450	7,925	8,575	8,500	Neutral	Bearish	Overbought	Middle Bands	Upper	Upper	Upper
INDYJK	805	1,170	690	1,320	920	Overbought	Bullish	Overbought	Middle Bands	Upper	Upper	Upper
INTAJK	472	354	282	466	338	Neutral	Bullish	Neutral	Middle Bands	Under	Under	Upper
INTPJK	17,075	16,775	15,800	16,900	16,250	Neutral	Bullish	Neutral	Middle Bands	Upper	Upper	Upper
ITMGJK	19,850	18,400	18,050	19,450	18,600	Oversold	Bullish	Neutral	Middle Bands	Under	Under	Upper
JFPAJK	1,580	1,265	1,510	1,475	1,295	Oversold	Bullish	Overbought	Middle Bands	Under	Under	Under
JSMRJK	4,700	4,840	4,550	4,900	4,640	Overbought	Bullish	Neutral	Upper Bands	Upper	Upper	Upper
KUJAJK	340	320	318	330	322	Neutral	Bearish	Neutral	Lower Bands	Under	Under	Upper
KLBFJK	1,615	1,520	1,515	1,595	1,555	Neutral	Bearish	Neutral	Middle Bands	Under	Under	Under
KRASJK	605	545	540	585	560	Oversold	Bullish	Overbought	Middle Bands	Under	Under	Under
LPCKJK	4,750	4,870	4,210	4,980	4,370	Neutral	Bullish	Neutral	Upper Bands	Upper	Upper	Under
LPKJJK	815	835	775	850	795	Neutral	Bullish	Overbought	Upper Bands	Upper	Upper	Under
LPPFJK	15,150	15,750	13,025	15,850	15,050	Overbought	Bullish	Overbought	Middle Bands	Upper	Upper	Under
LSIPJK	1,405	1,445	1,360	1,455	1,385	Neutral	Bullish	Neutral	Upper Bands	Upper	Under	Under
MAINJK	1,265	1,065	1,225	1,225	1,080	Oversold	Bullish	Overbought	Middle Bands	Under	Under	Under
MAPIJK	6,475	6,700	6,225	6,775	6,450	Neutral	Bullish	Neutral	Upper Bands	Upper	Upper	Upper
MASAJK	252	230	226	252	230	Oversold	Bullish	Neutral	Middle Bands	Under	Under	Under
MNCNJK	1,820	2,000	1,720	2,010	1,845	Overbought	Bearish	Overbought	Upper Bands	Upper	Upper	Upper
MPPAJK	1,010	860	915	1,010	890	Oversold	Bearish	Overbought	Middle Bands	Under	Under	Under
MTLAJK	332	330	326	332	330	Neutral	Bullish	Neutral	Middle Bands	Upper	Upper	Upper
MYORJK	2,140	2,250	2,000	2,340	2,060	Neutral	Bullish	Neutral	Upper Bands	Upper	Upper	Upper
PGASJK	2,520	2,420	2,340	2,470	2,420	Neutral	Bullish	Neutral	Middle Bands	Under	Under	Under
PTBAJK	13,075	11,650	12,300	12,600	11,850	Oversold	Bullish	Neutral	Middle Bands	Under	Under	Upper
RALSJK	1,190	1,315	1,225	1,385	1,325	Neutral	Bearish	Neutral	Middle Bands	Under	Upper	Upper
ROTIJK	1,670	1,650	1,610	1,670	1,640	Neutral	Bullish	Neutral	Middle Bands	Upper	Upper	Upper
SCMAJK	2,950	2,860	2,790	2,890	2,840	Neutral	Bullish	Neutral	Middle Bands	Upper	Upper	Upper
SCROJK	2,150	2,090	1,960	2,150	2,100	Neutral	Bullish	Neutral	Middle Bands	Upper	Upper	Upper
SIMPJK	660	625	600	660	620	Neutral	Bullish	Neutral	Middle Bands	Under	Upper	Upper
SMCBJK	940	890	870	900	890	Neutral	Bearish	Neutral	Middle Bands	Under	Under	Under
SMGRJK	9,025	8,750	8,600	8,875	8,725	Neutral	Bullish	Neutral	Middle Bands	Under	Under	Under
SMRAJK	1,415	1,390	1,340	1,390	1,370	Neutral	Bullish	Neutral	Middle Bands	Upper	Upper	Under
SRILJK	392	338	282	348	302	Neutral	Bullish	Neutral	Upper Bands	Upper	Upper	Upper
SSIAJK	790	730	695	790	755	Neutral	Bearish	Neutral	Middle Bands	Under	Upper	Upper
SSMSJK	1,725	1,675	1,625	1,750	1,680	Neutral	Bearish	Neutral	Middle Bands	Under	Upper	Upper
TLKMJK	4,450	4,340	4,330	4,450	4,360	Neutral	Bearish	Neutral	Middle Bands	Upper	Upper	Upper
TOTLJK	820	805	790	815	805	Neutral	Bullish	Neutral	Middle Bands	Upper	Under	Upper
UNTRJK	27,950	25,900	26,150	26,900	25,200	Oversold	Bullish	Neutral	Middle Bands	Under	Under	Upper
UNVRJK	44,000	46,000	44,325	46,300	45,400	Neutral	Bullish	Neutral	Upper Bands	Upper	Upper	Upper

Source : Reliance Research

Legend :

- Movement: Bullish and Bearish (Indicator Stochastic)
- Momentum: Oversold, Overbought and Neutral (Indicator RSI)
- Resistance Fractal: Strong Resistance
- Support Fractal: Strong Support
- Green: Good Conditions
- Red: Poor Conditions

HEAD OFFICE

Reliance Building

Jl. Pluit Sakti Raya No. 27AB,
Pluit
Jakarta 14450
T. +62 21 661 7768
F. +62 21 661 9884

RESEARCH DIVISION

Robertus Yanuar Hardy

robertus@reliance-securities.com

Rio Adrianus

rio.adrianus@reliance-securities.com

Lanjar Nafi Taulat I

lanjar@reliance-securities.com

Aji Setiawan

aji@reliance-securities.com

Shanti Dwi Jayanti

santi@reliance-securities.com

Head of Research

Research Analyst

Technical Research Analyst

Associate Research Analyst

Associate Research Analyst

EQUITY DIVISION

Jakarta- Pluit

Jl. Pluit Sakti Raya No. 27AB,
Pluit
Jakarta 14450
T. +62 21 661 7768
F. +62 21 661 9884

Bandung

Jl.Cisangkuy No.58
Bandung 40115
T. +62 22 721 8200
F. +62 22 721 9255

Surabaya - Gubeng

Jl. Bangka No. 22
Surabaya 60281
T. +62 31 501 1128
F. +62 31 503 3196

Makassar

Jl. Boto Lempangan No. 34 J
Makassar- Sulawesi Selatan
T. +62 411 3632388
F. +62 411 3614634

Jakarta - Sudirman

Menara Batavia Ground Floor
Jl.KH.Mas Mansyur Kav 126
Jakarta 10220
T. +62 21 57905455
F. +62 21 57950728

Tasikmalaya

Ruko Tasik Indah Plaza No.21
Jl. KHZ Mustofa No. 345
Tasikmalaya 46121
T. +62 265 345000
F. +62 265 345003

Surabaya - Diponegoro

Jl. Diponegoro No.26D
Surabaya 60261
T. +62 31 567 0388
F. +62 31 561 0528

Medan

Jl. Teuku Amir Hamzah No.40-O
Medan 20117
T. +62 61 6638592
F. +62 61 6638023

Jakarta - Kebon Jeruk

Plaza Kebon Jeruk
Jl.Raya Perjuangan Blok A/2
Jakarta 11530
T. +62 21 532 4074
F. +62 21 536 2157

Malang

Jl. Guntur No. 19
Malang 65112
T. +62 341 347 611
F. +62 341 347 615

Bali - Denpasar

Dewata Square Blok A3
Jl. Letda Tantular Renon
Denpasar 802361
T. +62 361 225099
F. +62 361 245099

Tangerang

Jl. Pahlawan Seribu Ruko BSD
Sektor 7 Blok RK kav. 9
Tangerang 15310
T. +62 21 5387495
F. +62 21 5387494

Pekanbaru

Jl. Jendral Sudirman No.73
Pekanbaru-Riau
T. +62 761 848414
F. +62 761 849456

Pontianak

Jl. MT Haryono No. 6
Pontianak 78121
T. +62 561 575674
F. +62 561 575670

Jakarta - Centro

Ruko Centro Residence Kav. 4-5
Tower C Lt. 1 No. 26-29
Jl. Macan, Daan Mogot
Jakarta 14450
T. +62 21 56945227
F. +62 21 56945226

Solo

Jl. Slamet Riyadi 330^a
Solo 57145
T. +62 271 736599
F. +62 271 733478

Balikpapan

Ruko Bukit Damai Indah
Blok I, No. 3, Rt.34
Jl. MT. Haryono, Gunung
Bahagia, Balikpapan Selatan
76114
T. +62 542 746313
F. +62 542 746317

IDX CORNER & INVESTMENT GALLERY**President University**

Resto Plaza 1F - Jababeka
Education Park
Jl. Ki Hajar Dewantara Raya
Cikarang - Bekasi 17550
T. +62 21 89106030

**Universitas Siliwangi
Tasikmalaya**

Jl. Siliwangi No. 24
Tasikmalaya 46151
T. +62 265 323685
F. +62 265 323534

Politeknik Kediri

Jl. Mayor Bismo No. 27
Kediri 64121
T. +62 354 683128
F. +62 354 683128

**Universitas Muhammadiyah
Sidoarjo**

Jl. Majapahit 666 B
Sidoarjo, Jawa Timur
T. +62 31 8945444
F. +62 31 8949333

**Universitas Tanjungpura
Pontianak**

Jl. Jendral Ahmad Yani
Pontianak 78124
T. +62 561 743465
F. +62 561 766840

**Universitas Pesantren Tinggi
Darul Ulum**

Kompleks Pp Darul Ulu,
Peterongan
Jombang, Jawa Timur 60281
T. +62 321 873655
F. +62 321 875771

STIE "AUB" Surakarta

Jl. Mr. Sartono 97, Cengklik
Nusukan, Surakarta 57135
T. +62 271 854803
F. +62 271 853084

Universitas Surabaya

Jl. Raya Kalirungkut
Surabaya 60293
T. +62 31 298 1203
F. +62 31 298 1204

**Universitas Muhammadiyah
Gresik**

Jl. Sumatra 101 GKB
Gresik 61121
T. +62 31 395 1414
F. +62 31 395 2585

Universitas Negeri Malang

Jl. Surabaya No. 6
Malang 65145
T. +62 341 585914
F. +62 341 55288

**Universitas Muhammadiyah
Malang**

Jl. Raya Tlogomas 246
Malang 65144
T. +62 341 464318-9
F. +62 341 460782

FSEI IAIN Antasari

Jl. Ahmad Yani Km. 4,5
Banjarmasin
T. + 62 511 3265783

STIE Malangkececwara

Jl. Terusan Candi Kalasan
Malang 65142
T. +62 341 491813
F. +62 341 495619

STIESIA Surabaya

Jl. Menur Pumpungan 30
Surabaya
T. +62 31 5947505
F. +62 31 5932218

**Universitas 17 Agustus
1945 Banyuwangi**

Jl. Adi Sucipto 26
Banyuwangi, Jawa Timur
T. +62 333 419613
F. +62 333 419163

STIE Tri Bhakti

Jl. Teuku Umar No. 24
Cut Meutia Setiakawan,
Bekasi
T. +62 21 82429400,
82429500
F. +62 271 726156

**Universitas Islam
Kalimantan**

Jl. Adiyaksa No. 2, Kayu
Tangi, Banjarmasin
T. + 62 511 3303871
F. + 62 511 3303871

STIKOM Bali

Jalan Puputan No. 86, Renon,
Denpasar
T. +62361 244445
F. +62361 264773

**Universitas Muhammadiyah
Pontianak**

Fakultas Ekonomi UM
Pontianak
Jl. Ahmad Yani, No. 111,
Pontianak 78124
T. +62561 743465
F. +62561 766840

**Universitas Negeri
Makassar**

Fakultas Ekonomi Gedung BT
Lt.2
Jl. A.P. Pettarani, Kampus
UNM, Gunungsari Baru
Makassar 90222
T. +62 411 889464 / 881244
F. +62 411 887604

STIE AAS Surakarta

Jl. Slamet Riyadi No. 361,
Kartasura, Surakarta
T. +62 271 726156
F. +62 271 726156

UPN "Veteran" Yogyakarta

Jl. Babarsari 2, Tambak Bayan
Yogyakarta
T. +62 274 485268
F. +62 274 487147

Disclaimer:

Information, opinions and recommendations contained in this document are presented by PT Reliance Sekuritas Indonesia Tbk. from sources that are considered reliable and dependable. This document is not an offer, invitation or any kind of representations to decide to buy or sell stock. Investment decisions taken based on this document is not the responsibility of PT Reliance Sekuritas Indonesia Tbk. PT Reliance Sekuritas Indonesia Tbk. reserves the right to change the contents of this document at any time without prior notice.