

IHSG



5697.06
-10.806
-0.19%

Vol (Mn): 6057
Val (Bn): 7976

LQ45



946.83
-2.14
-0.23%

Sector Indices	Last	Change	Change %
Agriculture	1798.07	(19.86)	(1.10)
Basic Industry	613.65	(4.68)	(0.76)
Consumer	2482.20	22.59	0.91
Finance	913.53	(3.16)	(0.35)
Infrastructure	1128.31	(3.21)	(0.28)
Manufacture	1483.00	3.72	0.25
Mining	1389.23	(34.50)	(2.48)
Misc Industry	1475.97	(11.77)	(0.80)
Property	496.31	(3.83)	(0.77)
Trade	925.79	3.03	0.33

Source: relitrade next G

Most Active	Last	Change %	Freq
SRIL	334	(1.2)	25,069
INDY	1,140	(2.6)	8,790
BUMI	380	(4.5)	7,830
UNTR	25,600	(1.2)	7,396
PBRX	585	(0.8)	6,107

Most Volume	Last	Change %	M share
RIMO	141	(2.1)	9,062
BRMS	53	(3.6)	7,896
BUMI	380	(4.5)	4,488
MYRX	130	(0.8)	2,832
INDY	1,140	(2.6)	1,908

Most Value	Last	Change %	Rp Bil
BBRI	14,125	0.2	367.92
TLKM	4,340	0.0	357.27
INDY	1,140	(2.6)	214.13
TPIA	27,500	(3.3)	206.87
BBNI	6,650	(1.1)	180.37

Source: relitrade next G

IHSG Technical Review



R3	6030
R2	5860
R1	5700
Last	5697.06
S1	5540
S2	5400
S3	5280

Comment:

Bearish engulfing candlestick pattern at upper Bollinger bands resistance level.

Stochastic, still consolidations movement at near oversold.

RSI consolidations at near overbought oscillator.

Long term bullish trend movement.

Stop-loss if broke the MA7 support level at 5680. Correction target to MA25 at 5650.

ACES



R3	1170
R2	1090
R1	1030
Last	995
S1	965
S2	920
S3	870
PARTIAL SELL	

Comment:
 Matching high candlestick pattern. Reversal signal Huge trading volume.

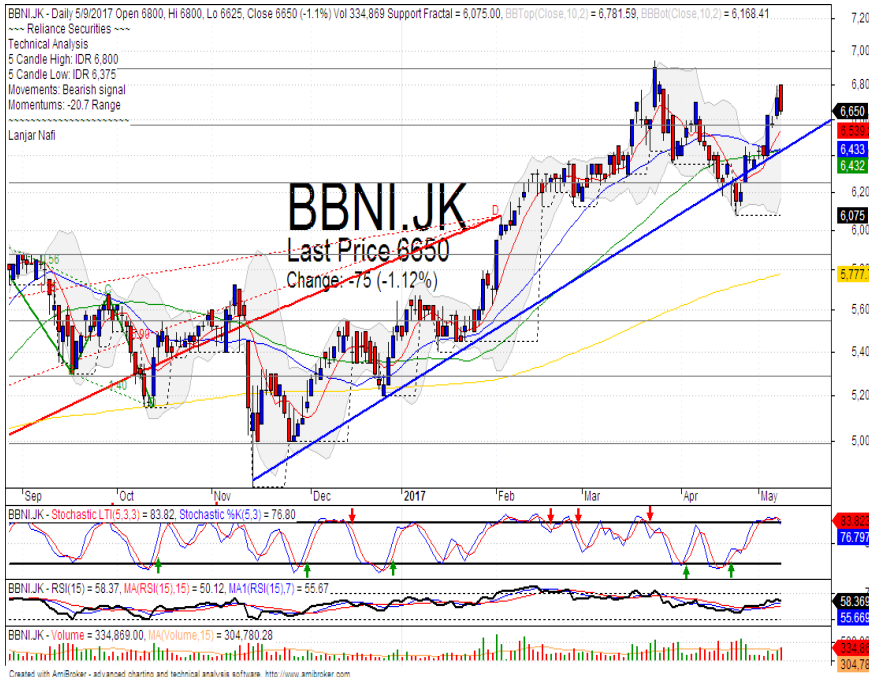
Stochastic, dead-cross indications at overbought oscillator.

RSI bearish reversal momentum at overbought oscillator.

Medium term bullish trend movement.

Stop-loss if confirmations the negative signal at 970. Corrections potential until MA25 and bullish trend support level at 915.

BBNI



R3	7800
R2	7350
R1	6900
Last	6650
S1	6575
S2	6250
S3	5825
PARTIAL SELL	

Comment:
 Tweezers top candlestick pattern. Huge trading volume.

Stochastic dead-cross at overbought oscillator.

RSI bearish reversal momentum.

Medium term bullish trend movement.

Stop-loss level at 6550 (Broke the support level). Corrections potential until Lower Bollinger bands at 6075.

LPCK



R3	5425
R2	5100
R1	4820
Last	4730
S1	4600
S2	4460
S3	4320

PARTIAL SELL

Comment:
 Bearish engulfing candlestick pattern. False break bearish trend line. Reversal signal.

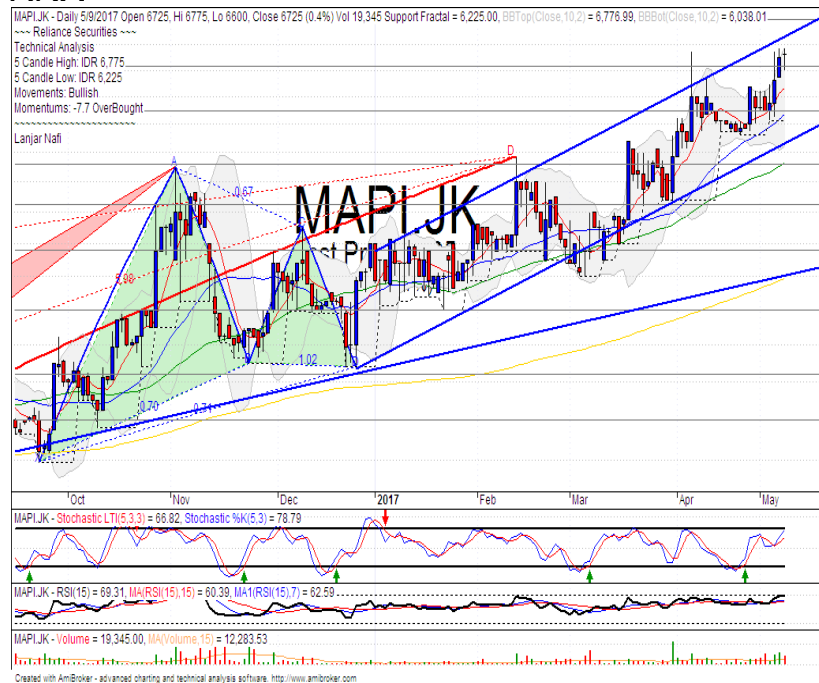
Stochastic dead-cross indications at overbought oscillator.

RSI bearish reversal momentum at the overbought oscillator.

Long term bearish trend movement.

Stop-loss if confirmations negative signal at 4660. Corrections target to 4320.

MAPI



R3	7875
R2	7400
R1	7000
Last	6725
S1	6625
S2	6300
S3	5900

PARTIAL SELL

Comment:
 Matching high candlestick pattern. Huge trading volume. Reversal signal.

Stochastic limited upside target at overbought oscillator.

RSI bearish momentum at overbought oscillator.

Medium term bullish trend movement.

Stop-loss if confirmations the negative signal at 6575. Corrections potential until 6275.

Stocks	S2	S1	Closing Price	R1	R2	Technical Notes	Rec	Stop Loss	Rec Buy Prc	Target Price
Plantation										
AALI	13,000	14,000	14,525	14,900	15,850	Consolidations	H	14,000		14,900
LSIP	1,300	1,405	1,435	1,475	1,535	Pulled back MA50	PS	1,430		
Mining										
INCO	1,650	1,800	1,930	1,965	2,120	Oversold	W	1,900		
Consumer										
UNVR	44,000	46,000	46,200	47,800	50,300	Bullish momentum	H	45,800		46,750
INDF	7,250	7,900	8,475	8,500	9,125	Bearish momentum	S	8,200		
KLBF	1,420	1,490	1,555	1,540	1,600	Consolidations	W	1,500		
Trading										
ACES	920	970	995	1,030	1,090	Matching high	S	960		
AKRA	6,350	6,600	6,575	7,000	7,300	Consolidations	H	6,400		7,000
UNTR	22,500	24,000	25,500	25,325	26,750	Consolidations	TB	25,000		27,500
Property & Construction										
LPCK	4,460	4,600	4,730	4,800	5,125	Bearish engulfing	S	4,700		
WIKA	1,990	2,200	2,240	2,400	2,600	Consolidations	W	2,180		
BSDE	1,630	1,720	1,825	1,830	1,935	Consolidations	H	1,750		1,830
WSKT	2,120	2,260	2,270	2,410	2,600	Oversold	W	2,320		
ADHI	2,070	2,200	2,200	2,300	2,420	Consolidations	W	2,170		
Basic Industry & Chemical										
SMGR	8,150	8,725	8,750	9,350	9,900	Stoch golden-cross	TB	8,700		9,350
CPIN	2,850	3,000	3,070	3,210	3,400	Oversold	W	3,050		
MAIN	950	1,000	1,050	1,065	1,130	Oversold	TB	1,050		1,135
INTP	15,500	16,350	16,700	17,500	18,400	Consolidations	H	16,300		17,200
Miscellaneous										
SRIL	288	316	338	350	400	Stoch dead-cross	S	332		
ASII	8,250	8,650	8,700	9,000	9,500	Oversold	TB	8,700		9,000
Finance										
BBTN	2,200	2,360	2,450	2,480	2,580	Northern star	PS	2,360		
BMRI	11,450	11,800	12,000	12,200	12,650	Consolidations	PS	11,800		
BTPN	2,200	2,340	2,530	2,550	2,770	Oversold	W	2,500		
BJBR	1,750	1,915	1,995	2,140	2,210	Stoch golden-cross	TB	1,910		2,140
BBRI	13,500	14,000	14,000	14,725	15,500	Bearish harami	PS	13,800		
Infrastructure										
TLKM	3,950	4,200	4,340	4,400	4,570	Bearish momentum	W	4,300		
PGAS	2,200	2,360	2,420	2,550	2,800	Consolidations	W	2,380		

Source : Reliance Sekuritas Indonesia

Analyst Conclusions:

The index has trying break out all time high level. Consolidations signal at resistance level.

Legend :

- B: BUY (allocate till 100% of the weighted capital to accumulate, higher than 50% upside probability)
- SB: SPECULATIVE BUY (allocate 25%-50% of the weighted capital to accumulate, 25%-50% upside probability)
- W: WAIT (wait for proper entry level, do the stop-loss if necessary)
- H: HOLD (hold the portfolio position, aim for the best price to distribute)
- PS: PARTIAL SELL (distribute 25%-50% part of the portfolio, 25%-50% downside probability)
- S: SELL (distribute till 100% of the portfolio, higher than 50% downside probability)
- TB: TRADING BUY (short term or intraday trading within a tight trading range. Highly speculative).

Ticker	Resistance	Price	Support	Weekly	Weekly	Indicator			Moving Average			
	Fractal	5/9/2017	Fractal	High	Low	Stochastic	RSI	B. Band	25 Days	50 Days	200 Days	
AALI.JK	14,950	14,525	14,100	14,625	14,225	Neutral	Bullish	Neutral	Middle Bands	Under	Under	Under
ACES.JK	965	995	900	1,010	930	Neutral	Bullish	Overbought	Middle Bands	Upper	Upper	Upper
ADHI.JK	2,330	2,200	2,150	2,290	2,200	Neutral	Bullish	Neutral	Middle Bands	Under	Under	Under
ADRO.JK	1,885	1,550	1,850	1,750	1,620	Overbought	Bullish	Overbought	Middle Bands	Under	Under	Upper
AISA.JK	2,370	2,280	2,100	2,370	2,290	Neutral	Bearish	Neutral	Middle Bands	Upper	Upper	Upper
AKRA.JK	6,900	6,575	6,225	6,700	6,425	Neutral	Bullish	Neutral	Middle Bands	Upper	Upper	Upper
ANTM.JK	715	630	625	700	640	Overbought	Bullish	Overbought	Middle Bands	Under	Under	Under
APLN.JK	240	204	202	212	208	Overbought	Bullish	Neutral	Middle Bands	Under	Under	Under
ASII.JK	9,350	8,700	8,675	9,050	8,775	Overbought	Bearish	Neutral	Middle Bands	Under	Upper	Upper
ASRI.JK	360	342	334	352	340	Neutral	Bullish	Neutral	Middle Bands	Under	Under	Under
BBKA.JK	18,000	18,000	17,575	18,350	17,825	Neutral	Bearish	Neutral	Middle Bands	Upper	Upper	Upper
BBKP.JK	655	635	615	645	630	Neutral	Bullish	Neutral	Middle Bands	Upper	Upper	Under
BBNI.JK	6,450	6,650	6,075	6,800	6,450	Overbought	Bearish	Neutral	Middle Bands	Upper	Upper	Upper
BBRI.JK	13,225	14,000	12,900	14,350	13,275	Overbought	Bearish	Overbought	Middle Bands	Upper	Upper	Upper
BBTN.JK	2,390	2,450	2,230	2,490	2,300	Overbought	Bullish	Overbought	Upper Bands	Upper	Upper	Upper
BDMN.JK	5,025	4,940	4,850	4,990	4,930	Neutral	Bearish	Neutral	Middle Bands	Upper	Upper	Upper
BHIT.JK	128	119	117	123	120	Neutral	Bullish	Neutral	Middle Bands	Under	Under	Under
BJBR.JK	2,060	1,995	1,985	2,060	2,010	Overbought	Bearish	Neutral	Middle Bands	Under	Under	Upper
BJTM.JK	720	685	655	710	680	Neutral	Bullish	Neutral	Middle Bands	Under	Upper	Upper
BKSL.JK	100	79	87	87	83	Overbought	Bearish	Overbought	Lower Bands	Under	Under	Under
BMRI.JK	12,275	12,000	11,500	12,275	11,650	Neutral	Bullish	Neutral	Middle Bands	Upper	Upper	Upper
BMTR.JK	550	645	530	650	550	Overbought	Bearish	Overbought	Upper Bands	Upper	Upper	Under
BSDE.JK	1,840	1,825	1,750	1,865	1,775	Neutral	Bullish	Neutral	Middle Bands	Upper	Upper	Under
BTPN.JK	2,650	2,530	2,580	2,600	2,590	Overbought	Bullish	Neutral	Lower Bands	Under	Under	Under
BWPT.JK	394	284	280	314	298	Overbought	Bullish	Neutral	Middle Bands	Under	Under	Upper
CMNP.JK	1,420	1,400	1,385	1,405	1,390	Neutral	Bullish	Neutral	Middle Bands	Under	Under	Under
CPIN.JK	3,400	3,070	3,070	3,200	3,120	Overbought	Bearish	Neutral	Middle Bands	Under	Under	Under
CSAP.JK	464	500	440	505	450	Neutral	Bullish	Overbought	Upper Bands	Upper	Upper	Upper
CTRA.JK	1,320	1,175	1,170	1,240	1,210	Neutral	Bearish	Neutral	Middle Bands	Under	Under	Under
DILD.JK	442	420	420	440	424	Overbought	Bearish	Neutral	Middle Bands	Under	Under	Under
EXCL.JK	3,270	3,120	3,080	3,200	3,120	Neutral	Bullish	Neutral	Middle Bands	Upper	Upper	Upper
GGRM.JK	68,575	71,200	63,500	72,000	68,000	Overbought	Bearish	Neutral	Middle Bands	Upper	Upper	Upper
GIAA.JK	396	350	340	360	350	Overbought	Bullish	Neutral	Middle Bands	Under	Under	Under
GTLJ.K	1,045	1,050	950	1,095	995	Neutral	Bullish	Neutral	Middle Bands	Under	Under	Under
HEXA.JK	4,600	3,980	4,350	4,300	4,000	Overbought	Bullish	Neutral	Middle Bands	Under	Under	Upper
HRUM.JK	2,650	2,250	2,450	2,560	2,390	Overbought	Bullish	Neutral	Lower Bands	Under	Under	Upper
ICBP.JK	8,950	8,625	8,425	8,675	8,650	Neutral	Bullish	Neutral	Middle Bands	Upper	Upper	Under
IMAS.JK	1,200	1,125	1,105	1,165	1,120	Neutral	Bearish	Neutral	Middle Bands	Under	Under	Under
INCO.JK	2,300	1,930	2,140	2,290	2,000	Overbought	Bearish	Overbought	Lower Bands	Under	Under	Under
INDF.JK	8,550	8,475	8,400	8,575	8,500	Neutral	Bearish	Overbought	Middle Bands	Upper	Upper	Upper
INDY.JK	1,320	1,135	690	1,320	990	Overbought	Bearish	Overbought	Middle Bands	Upper	Upper	Upper
INTA.JK	472	350	282	450	338	Neutral	Bullish	Neutral	Middle Bands	Under	Under	Upper
INTP.JK	17,075	16,700	15,800	16,775	16,250	Neutral	Bullish	Neutral	Middle Bands	Upper	Upper	Upper
ITMG.JK	19,100	17,425	18,050	19,100	18,400	Overbought	Bearish	Neutral	Lower Bands	Under	Under	Upper
JFJA.JK	1,580	1,215	1,510	1,410	1,280	Overbought	Bearish	Overbought	Middle Bands	Under	Under	Under
JSMR.JK	4,700	4,780	4,550	4,900	4,640	Overbought	Bearish	Neutral	Middle Bands	Upper	Upper	Upper
KUJA.JK	340	322	318	328	322	Neutral	Bearish	Neutral	Middle Bands	Under	Under	Upper
KLBF.JK	1,595	1,555	1,515	1,595	1,555	Neutral	Bearish	Neutral	Middle Bands	Under	Under	Under
KRAS.JK	605	525	540	575	560	Overbought	Bearish	Overbought	Lower Bands	Under	Under	Under
LPCK.JK	4,750	4,730	4,210	4,980	4,370	Neutral	Bullish	Neutral	Middle Bands	Upper	Upper	Under
LPKR.JK	815	820	775	850	795	Neutral	Bullish	Neutral	Middle Bands	Upper	Upper	Under
LPPF.JK	15,850	15,075	13,025	15,850	15,050	Overbought	Bearish	Neutral	Middle Bands	Upper	Upper	Under
LSIP.JK	1,405	1,435	1,360	1,470	1,385	Neutral	Bullish	Neutral	Upper Bands	Upper	Under	Under
MAIN.JK	1,265	1,050	1,225	1,185	1,080	Overbought	Bullish	Overbought	Middle Bands	Under	Under	Under
MAPI.JK	6,475	6,725	6,225	6,775	6,450	Neutral	Bullish	Overbought	Upper Bands	Upper	Upper	Upper
MASA.JK	252	234	226	252	230	Neutral	Bearish	Neutral	Middle Bands	Under	Under	Upper
MNCN.JK	1,820	2,020	1,720	2,040	1,860	Overbought	Bearish	Overbought	Upper Bands	Upper	Upper	Upper
MPPA.JK	1,010	855	850	985	875	Overbought	Bearish	Overbought	Middle Bands	Under	Under	Under
MTLA.JK	332	330	322	332	330	Neutral	Bullish	Neutral	Middle Bands	Upper	Upper	Upper
MYOR.JK	2,140	2,340	2,000	2,390	2,060	Neutral	Bullish	Overbought	Upper Bands	Upper	Upper	Upper
PGAS.JK	2,520	2,420	2,340	2,470	2,420	Neutral	Bullish	Neutral	Middle Bands	Under	Under	Under
PTBA.JK	13,075	11,375	12,300	12,550	11,700	Overbought	Bullish	Neutral	Lower Bands	Under	Under	Under
RALS.JK	1,190	1,370	1,225	1,385	1,325	Neutral	Bullish	Overbought	Middle Bands	Upper	Upper	Upper
ROTI.JK	1,670	1,675	1,620	1,715	1,645	Neutral	Bullish	Neutral	Upper Bands	Upper	Upper	Upper
SCMA.JK	2,950	2,870	2,790	2,890	2,840	Neutral	Bullish	Neutral	Middle Bands	Upper	Upper	Upper
SGRO.JK	2,150	2,110	2,000	2,150	2,100	Neutral	Bullish	Neutral	Middle Bands	Upper	Upper	Upper
SIMP.JK	660	600	600	650	620	Neutral	Bullish	Neutral	Lower Bands	Under	Upper	Upper
SMCB.JK	940	900	870	905	890	Neutral	Bullish	Neutral	Middle Bands	Under	Under	Under
SMGR.JK	9,025	8,750	8,600	8,875	8,725	Neutral	Bullish	Neutral	Middle Bands	Under	Under	Under
SMRA.JK	1,415	1,400	1,340	1,445	1,370	Neutral	Bullish	Neutral	Middle Bands	Upper	Upper	Under
SRIL.JK	392	338	282	348	310	Overbought	Bullish	Neutral	Middle Bands	Upper	Upper	Upper
SSIA.JK	790	725	695	785	750	Neutral	Bearish	Neutral	Middle Bands	Under	Upper	Upper
SSMS.JK	1,725	1,695	1,625	1,725	1,680	Neutral	Bullish	Neutral	Middle Bands	Upper	Upper	Upper
TLKM.JK	4,450	4,340	4,330	4,450	4,360	Overbought	Bearish	Neutral	Middle Bands	Upper	Upper	Upper
TOTL.JK	820	805	790	815	805	Neutral	Bullish	Neutral	Middle Bands	Under	Under	Upper
UNTR.JK	27,950	25,500	24,750	26,425	25,200	Neutral	Bullish	Neutral	Middle Bands	Under	Under	Upper
UNVR.JK	44,000	46,200	44,325	46,425	45,425	Neutral	Bullish	Neutral	Upper Bands	Upper	Upper	Upper

Source : Reliance Research

Legend :

- Movement: Bullish and Bearish (Indicator Stochastic)
- Momentum: Oversold, Overbought and Neutral (Indicator RSI)
- Resistance Fractal: Strong Resistance
- Support Fractal: Strong Support
- Green: Good Conditions
- Red: Poor Conditions

HEAD OFFICE

Reliance Building

Jl. Pluit Sakti Raya No. 27AB,
Pluit
Jakarta 14450
T. +62 21 661 7768
F. +62 21 661 9884

RESEARCH DIVISION

Robertus Yanuar Hardy

robertus@reliance-securities.com

Rio Adrianus

rio.adrianus@reliance-securities.com

Lanjar Nafi Taulat I

lanjar@reliance-securities.com

Aji Setiawan

aji@reliance-securities.com

Shanti Dwi Jayanti

santi@reliance-securities.com

Head of Research

Research Analyst

Technical Research Analyst

Associate Research Analyst

Associate Research Analyst

EQUITY DIVISION

Jakarta- Pluit

Jl. Pluit Sakti Raya No. 27AB,
Pluit
Jakarta 14450
T. +62 21 661 7768
F. +62 21 661 9884

Bandung

Jl.Cisangkuy No.58
Bandung 40115
T. +62 22 721 8200
F. +62 22 721 9255

Surabaya - Gubeng

Jl. Bangka No. 22
Surabaya 60281
T. +62 31 501 1128
F. +62 31 503 3196

Makassar

Jl. Boto Lempangan No. 34 J
Makassar- Sulawesi Selatan
T. +62 411 3632388
F. +62 411 3614634

Jakarta - Sudirman

Menara Batavia Ground Floor
Jl.KH.Mas Mansyur Kav 126
Jakarta 10220
T. +62 21 57905455
F. +62 21 57950728

Tasikmalaya

Ruko Tasik Indah Plaza No.21
Jl. KHZ Mustofa No. 345
Tasikmalaya 46121
T. +62 265 345000
F. +62 265 345003

Surabaya - Diponegoro

Jl. Diponegoro No.26D
Surabaya 60261
T. +62 31 567 0388
F. +62 31 561 0528

Medan

Jl. Teuku Amir Hamzah No.40-O
Medan 20117
T. +62 61 6638592
F. +62 61 6638023

Jakarta - Kebon Jeruk

Plaza Kebon Jeruk
Jl.Raya Perjuangan Blok A/2
Jakarta 11530
T. +62 21 532 4074
F. +62 21 536 2157

Malang

Jl. Guntur No. 19
Malang 65112
T. +62 341 347 611
F. +62 341 347 615

Bali - Denpasar

Dewata Square Blok A3
Jl. Letda Tantular Renon
Denpasar 802361
T. +62 361 225099
F. +62 361 245099

Tangerang

Jl. Pahlawan Seribu Ruko BSD
Sektor 7 Blok RK kav. 9
Tangerang 15310
T. +62 21 5387495
F. +62 21 5387494

Pekanbaru

Jl. Jendral Sudirman No.73
Pekanbaru-Riau
T. +62 761 848414
F. +62 761 849456

Pontianak

Jl. MT Haryono No. 6
Pontianak 78121
T. +62 561 575674
F. +62 561 575670

Jakarta - Centro

Ruko Centro Residence Kav. 4-5
Tower C Lt. 1 No. 26-29
Jl. Macan, Daan Mogot
Jakarta 14450
T. +62 21 56945227
F. +62 21 56945226

Solo

Jl. Slamet Riyadi 330^a
Solo 57145
T. +62 271 736599
F. +62 271 733478

Balikpapan

Ruko Bukit Damai Indah
Blok I, No. 3, Rt.34
Jl. MT. Haryono, Gunung
Bahagia, Balikpapan Selatan
76114
T. +62 542 746313
F. +62 542 746317

IDX CORNER & INVESTMENT GALLERY**President University**

Resto Plaza 1F - Jababeka
Education Park
Jl. Ki Hajar Dewantara Raya
Cikarang - Bekasi 17550
T. +62 21 89106030

**Universitas Siliwangi
Tasikmalaya**

Jl. Siliwangi No. 24
Tasikmalaya 46151
T. +62 265 323685
F. +62 265 323534

Politeknik Kediri

Jl. Mayor Bismo No. 27
Kediri 64121
T. +62 354 683128
F. +62 354 683128

**Universitas Muhammadiyah
Sidoarjo**

Jl. Majapahit 666 B
Sidoarjo, Jawa Timur
T. +62 31 8945444
F. +62 31 8949333

**Universitas Tanjungpura
Pontianak**

Jl. Jendral Ahmad Yani
Pontianak 78124
T. +62 561 743465
F. +62 561 766840

**Universitas Pesantren Tinggi
Darul Ulum**

Kompleks Pp Darul Ulu,
Peterongan
Jombang, Jawa Timur 60281
T. +62 321 873655
F. +62 321 875771

STIE "AUB" Surakarta

Jl. Mr. Sartono 97, Cengklik
Nusukan, Surakarta 57135
T. +62 271 854803
F. +62 271 853084

Universitas Surabaya

Jl. Raya Kalirungkut
Surabaya 60293
T. +62 31 298 1203
F. +62 31 298 1204

**Universitas Muhammadiyah
Gresik**

Jl. Sumatra 101 GKB
Gresik 61121
T. +62 31 395 1414
F. +62 31 395 2585

Universitas Negeri Malang

Jl. Surabaya No. 6
Malang 65145
T. +62 341 585914
F. +62 341 55288

**Universitas Muhammadiyah
Malang**

Jl. Raya Tlogomas 246
Malang 65144
T. +62 341 464318-9
F. +62 341 460782

FSEI IAIN Antasari

Jl. Ahmad Yani Km. 4,5
Banjarmasin
T. + 62 511 3265783

STIE Malangkececwara

Jl. Terusan Candi Kalasan
Malang 65142
T. +62 341 491813
F. +62 341 495619

STIESIA Surabaya

Jl. Menur Pumpungan 30
Surabaya
T. +62 31 5947505
F. +62 31 5932218

**Universitas 17 Agustus
1945 Banyuwangi**

Jl. Adi Sucipto 26
Banyuwangi, Jawa Timur
T. +62 333 419613
F. +62 333 419163

STIE Tri Bhakti

Jl. Teuku Umar No. 24
Cut Meutia Setiakawan,
Bekasi
T. +62 21 82429400,
82429500
F. +62 271 726156

**Universitas Islam
Kalimantan**

Jl. Adiyaksa No. 2, Kayu
Tangi, Banjarmasin
T. + 62 511 3303871
F. + 62 511 3303871

STIKOM Bali

Jalan Puputan No. 86, Renon,
Denpasar
T. +62361 244445
F. +62361 264773

**Universitas Muhammadiyah
Pontianak**

Fakultas Ekonomi UM
Pontianak
Jl. Ahmad Yani, No. 111,
Pontianak 78124
T. +62561 743465
F. +62561 766840

**Universitas Negeri
Makassar**

Fakultas Ekonomi Gedung BT
Lt.2
Jl. A.P. Pettarani, Kampus
UNM, Gunungsari Baru
Makassar 90222
T. +62 411 889464 / 881244
F. +62 411 887604

STIE AAS Surakarta

Jl. Slamet Riyadi No. 361,
Kartasura, Surakarta
T. +62 271 726156
F. +62 271 726156

UPN "Veteran" Yogyakarta

Jl. Babarsari 2, Tambak Bayan
Yogyakarta
T. +62 274 485268
F. +62 274 487147

Disclaimer:

Information, opinions and recommendations contained in this document are presented by PT Reliance Sekuritas Indonesia Tbk. from sources that are considered reliable and dependable. This document is not an offer, invitation or any kind of representations to decide to buy or sell stock. Investment decisions taken based on this document is not the responsibility of PT Reliance Sekuritas Indonesia Tbk. PT Reliance Sekuritas Indonesia Tbk. reserves the right to change the contents of this document at any time without prior notice.