

## IHSG



5653.01  
-44.048  
-0.77%

Vol (Mn): 9607  
Val (Bn): 7586

## LQ45



941.94  
-4.89  
-0.52%

Sector Indices	Last	Change	Change %
Agriculture	1782.97	(15.10)	(0.85)
Basic Industry	605.29	(8.36)	(1.38)
Consumer	2479.22	(2.97)	(0.12)
Finance	908.87	(4.66)	(0.51)
Infrastructure	1133.96	5.65	0.50
Manufacture	1474.52	(8.48)	(0.58)
Mining	1347.03	(42.20)	(3.13)
Misc Industry	1458.44	(17.53)	(1.20)
Property	487.16	(9.15)	(1.88)
Trade	908.15	(17.65)	(1.94)

Source: relitrade next G

Most Active	Last	Change %	Freq
INDY	855	(24.7)	21,862
SRIL	348	3.0	18,766
BUMI	328	(13.2)	14,607
TLKM	4,370	0.7	9,148
PBRX	570	(2.6)	6,858

Most Volume	Last	Change %	M share
BUMI	328	(13.2)	8,728
MYRX	130	(0.8)	8,446
RIMO	144	1.4	8,151
SRIL	348	3.0	6,826
INDY	855	(24.7)	5,013

Most Value	Last	Change %	Rp Bil
INDY	855	(24.7)	493.95
ASII	8,600	(1.1)	377.21
TLKM	4,370	0.7	373.44
BUMI	328	(13.2)	302.30
BBRI	13,975	(0.2)	290.07

Source: relitrade next G

## IHSG Technical Review



<b>R3</b>	<b>6030</b>
<b>R2</b>	<b>5860</b>
<b>R1</b>	<b>5700</b>
<b>Last</b>	<b>5653.01</b>
<b>S1</b>	<b>5540</b>
<b>S2</b>	<b>5400</b>
<b>S3</b>	<b>5280</b>

### Comment:

Broke the MA7 support level and trying MA25 support level. Bearish momentum.

Stochastic, still consolidations movement at near oversold.

RSI consolidations at near overbought oscillator.

Long term bullish trend movement.

Stop-loss if broke the MA7 support level at 5680. Correction target at 5600. Upside to 5676 if rebounded at MA25.

## ASII



R3	9500
R2	9000
R1	8650
Last	8600
S1	8275
S2	7900
S3	7600

### TRADING BUY

#### Comment:

Southern star candlestick pattern at Bullish trend and MA50 support level. Reversal signal.

Stochastic, golden-cross at oversold oscillator. broad upside potential.

RSI still bearish movement.

Medium term bullish trend movement.

Upside target to upper Bollinger bands at 9100. Stop-loss if broke the MA50 at 8475.

## TKIM



R3	2200
R2	1940
R1	1710
Last	1585
S1	1450
S2	1260
S3	1080

### SELL

#### Comment:

Bearish engulfing candlestick pattern. Reversal signal.

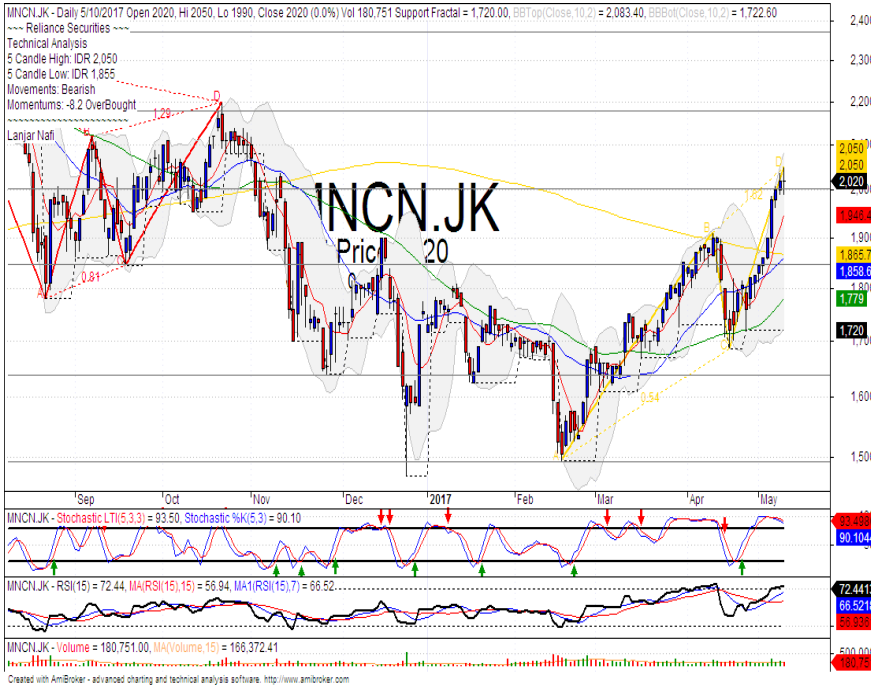
Stochastic dead-cross at overbought oscillator.

RSI bearish reversal momentum.

Medium term bullish trend movement.

Stop-loss level at 1435 (Broke the support level). Corrections potential until MA25 support level at 1255.

## MNCN



R3	2530
R2	2370
R1	2170
Last	2020
S1	2000
S2	1850
S3	1635

**PARTIAL SELL**

**Comment:**

Northern star candlestick pattern at upper Bollinger bands.

Stochastic dead-cross at overbought oscillator.

RSI bearish reversal momentum at the overbought oscillator.

Medium term bullish trend movement.

Stop-loss if confirmations negative signal at 1980. Corrections target to MA200 at 1865.

## INKP



R3	3840
R2	3440
R1	3010
Last	2580
S1	2580
S2	2340
S3	2090

**SELL**

**Comment:**

Bearish engulfing candlestick pattern. Bearish reversal pattern.

Stochastic dead-cross at overbought oscillator. broad downside potential.

RSI bearish reversal momentum at overbought oscillator.

Medium term bullish trend movement.

Stop-loss if confirmations the negative signal at 2500. Corrections potential until 2090.

Stocks	S2	S1	Closing Price	R1	R2	Technical Notes	Rec	Stop Loss	Rec Buy Prc	Target Price
<b>Plantation</b>										
AALI	13,000	14,000	14,200	14,900	15,850	Consolidations	W	14,000		
LSIP	1,300	1,405	1,415	1,475	1,535	Pulled back MA50	S	1,400		
<b>Mining</b>										
INCO	1,650	1,800	1,900	1,965	2,120	Oversold	W	1,850		
<b>Consumer</b>										
UNVR	44,000	46,000	46,350	47,800	50,300	Bullish momentum	H	45,800		46,750
INDF	7,250	7,900	8,400	8,500	9,125	Bearish momentum	S	8,200		
KLBF	1,490	1,540	1,575	1,600	1,650	Consolidations	H	1,530		
<b>Trading</b>										
ACES	920	970	980	1,030	1,090	Stoch dead-cross	S	960		
AKRA	6,100	6,350	6,350	6,600	7,000	Consolidations	PS	6,300		
UNTR	22,500	24,000	25,050	25,325	26,750	Consolidations	W	25,000		
<b>Property &amp; Construction</b>										
LPCK	4,160	4,320	4,450	4,460	4,600	Bearish engulfing	S	4,300		
WIKA	1,860	1,990	2,180	2,200	2,400	Oversold	W	2,180		
BSDE	1,630	1,720	1,760	1,830	1,935	Bearish momentum	PS	1,750		
WSKT	1,980	2,120	2,250	2,260	2,410	Oversold	W	2,200		
ADHI	1,955	2,070	2,170	2,200	2,300	Consolidations	W	2,100		
<b>Basic Industry &amp; Chemical</b>										
SMGR	7,500	8,150	8,650	8,725	9,350	Consolidations	TB	8,500		9,050
CPIN	2,850	3,000	3,070	3,210	3,400	Stoch golden-cross	TB	3,050		3,210
MAIN	950	1,000	1,025	1,065	1,130	Oversold	TB	1,010		1,135
INTP	15,500	16,350	16,775	17,500	18,400	Overbought	H	16,300		17,200
<b>Miscellaneous</b>										
SRIL	288	316	348	350	400	Stoch dead-cross	S	332		
ASII	7,900	8,250	8,600	8,650	9,000	Arrived at MA50	TB	8,500		9,200
<b>Finance</b>										
BBTN	2,230	2,340	2,350	2,360	2,480	Bearish momentum	S	2,320		
BMRI	11,450	11,800	12,025	12,200	12,650	Bearish momentum	PS	11,800		
BTPN	2,200	2,340	2,520	2,550	2,770	Oversold	W	2,500		
BJBR	1,750	1,915	1,980	2,140	2,210	Stoch golden-cross	TB	1,910		2,140
BBRI	13,500	14,000	13,975	14,725	15,500	Bearish momentum	S	13,800		
<b>Infrastructure</b>										
TLKM	3,950	4,200	4,370	4,400	4,570	Consolidations	PS	4,300		
PGAS	2,200	2,360	2,430	2,550	2,800	Consolidations	W	2,380		

Source : Reliance Sekuritas Indonesia

## Analyst Conclusions:

The index has breaks the support level. Corrections indications

Legend :

- B: BUY (allocate till 100% of the weighted capital to accumulate, higher than 50% upside probability)
- SB: SPECULATIVE BUY (allocate 25%-50% of the weighted capital to accumulate, 25%-50% upside probability)
- W: WAIT (wait for proper entry level, do the stop-loss if necessary)
- H: HOLD (hold the portfolio position, aim for the best price to distribute)
- PS: PARTIAL SELL (distribute 25%-50% part of the portfolio, 25%-50% downside probability)
- S: SELL (distribute till 100% of the portfolio, higher than 50% downside probability)
- TB: TRADING BUY (short term or intraday trading within a tight trading range. Highly speculative).

Ticker	Resistance	Price	Support	Weekly	Weekly	Indicator				Moving Average		
	Fractal	5/10/2017	Fractal	High	Low	Stochastic	RSI	B. Band	25 Days	50 Days	200 Days	
AALJJK	14,950	14,200	14,100	14,625	14,225	Neutral	Bullish	Neutral	Middle Bands	Under	Under	Under
ACESJK	965	980	900	1,010	955	Overbought	Bearish	Neutral	Middle Bands	Upper	Upper	Upper
ADHIJK	2,290	2,170	2,150	2,290	2,200	Neutral	Bearish	Neutral	Middle Bands	Under	Under	Under
ADROJK	1,885	1,495	1,850	1,660	1,565	Overbought	Bullish	Overbought	Middle Bands	Under	Under	Under
AISAJK	2,370	2,180	2,100	2,330	2,290	Neutral	Bearish	Neutral	Middle Bands	Under	Under	Upper
AKRAJK	6,900	6,350	6,225	6,700	6,425	Neutral	Bullish	Neutral	Middle Bands	Under	Under	Under
ANTMJK	715	625	625	670	640	Overbought	Bearish	Overbought	Middle Bands	Under	Under	Under
APLNJK	240	199	202	208	206	Overbought	Bearish	Neutral	Middle Bands	Under	Under	Under
ASIIJK	9,350	8,600	8,675	8,900	8,675	Overbought	Bearish	Neutral	Middle Bands	Under	Upper	Upper
ASRIJK	360	336	334	352	340	Neutral	Bearish	Neutral	Middle Bands	Under	Under	Under
BBCAJK	18,000	17,925	17,575	18,350	17,825	Neutral	Bearish	Neutral	Middle Bands	Upper	Upper	Upper
BBKPKJ	655	630	615	645	630	Neutral	Bullish	Neutral	Middle Bands	Under	Upper	Under
BBNIJK	6,450	6,575	6,075	6,800	6,625	Neutral	Bearish	Neutral	Middle Bands	Upper	Upper	Upper
BBRIJK	13,225	13,975	12,900	14,350	13,925	Overbought	Bearish	Neutral	Middle Bands	Upper	Upper	Upper
BBTNJK	2,390	2,350	2,230	2,490	2,350	Overbought	Bearish	Neutral	Middle Bands	Upper	Upper	Upper
BDMNJK	5,025	4,920	4,850	4,980	4,930	Neutral	Bearish	Neutral	Middle Bands	Upper	Upper	Upper
BHITJK	128	118	117	126	121	Neutral	Bearish	Neutral	Middle Bands	Under	Under	Under
BJBRJK	2,060	1,980	1,985	2,050	2,010	Overbought	Bearish	Neutral	Middle Bands	Under	Under	Under
BJTMJK	720	670	655	710	680	Neutral	Bullish	Neutral	Middle Bands	Under	Upper	Upper
BKSLJK	100	76	87	86	80	Overbought	Bearish	Overbought	Lower Bands	Under	Under	Under
BMRIJK	12,275	12,025	11,500	12,275	11,825	Neutral	Bearish	Neutral	Middle Bands	Upper	Upper	Upper
BMTRJK	550	675	530	695	590	Overbought	Bearish	Overbought	Upper Bands	Upper	Upper	Under
BSDEJK	1,840	1,760	1,750	1,865	1,810	Neutral	Bearish	Neutral	Middle Bands	Under	Under	Under
BTPNJK	2,600	2,520	2,580	2,600	2,550	Overbought	Bullish	Neutral	Lower Bands	Under	Under	Under
BWPTJK	394	266	280	308	288	Overbought	Bullish	Overbought	Middle Bands	Under	Under	Upper
CMNPJK	1,420	1,370	1,385	1,405	1,390	Neutral	Bullish	Overbought	Lower Bands	Under	Under	Under
CPINJK	3,400	3,070	3,070	3,160	3,100	Overbought	Bullish	Neutral	Middle Bands	Under	Under	Under
CSAPJK	464	482	440	505	450	Neutral	Bullish	Neutral	Middle Bands	Upper	Upper	Upper
CTRAJK	1,320	1,165	1,170	1,240	1,190	Overbought	Bearish	Neutral	Middle Bands	Under	Under	Under
DILDJK	440	418	420	440	420	Overbought	Bullish	Neutral	Middle Bands	Under	Under	Under
EXCLJK	3,270	3,150	3,030	3,200	3,120	Neutral	Bullish	Neutral	Middle Bands	Upper	Upper	Upper
GGRMJK	68,575	70,975	63,500	72,000	68,000	Overbought	Bearish	Neutral	Middle Bands	Upper	Upper	Upper
GIAAJK	396	340	340	360	350	Neutral	Bullish	Neutral	Middle Bands	Under	Under	Under
GJTLJK	1,045	1,030	950	1,095	995	Neutral	Bullish	Neutral	Middle Bands	Under	Under	Under
HEXAJK	4,600	3,990	4,350	4,150	4,000	Overbought	Bullish	Neutral	Middle Bands	Under	Under	Upper
HRUMJK	2,650	2,080	2,450	2,460	2,270	Overbought	Bullish	Overbought	Lower Bands	Under	Under	Upper
ICBPJK	8,950	8,700	8,425	8,700	8,650	Neutral	Bullish	Neutral	Middle Bands	Upper	Upper	Under
IMASJK	1,200	1,125	1,105	1,155	1,120	Neutral	Bearish	Neutral	Middle Bands	Under	Under	Under
INCOJK	2,300	1,900	2,140	2,140	1,960	Overbought	Bearish	Overbought	Middle Bands	Under	Under	Under
INDFJK	8,575	8,400	8,400	8,575	8,500	Neutral	Bearish	Neutral	Middle Bands	Upper	Upper	Upper
INDYJK	1,320	855	690	1,320	1,130	Neutral	Bearish	Neutral	Middle Bands	Upper	Upper	Upper
INTAJK	472	344	282	360	338	Neutral	Bullish	Neutral	Middle Bands	Under	Under	Upper
INTPJK	17,075	16,775	15,800	16,900	16,250	Neutral	Bullish	Neutral	Middle Bands	Upper	Upper	Upper
ITMGJK	19,100	16,275	18,050	19,100	17,525	Overbought	Bearish	Overbought	Lower Bands	Under	Under	Upper
JFPAJK	1,580	1,130	1,510	1,345	1,215	Overbought	Bearish	Overbought	Lower Bands	Under	Under	Under
JSMRJK	4,900	4,680	4,550	4,900	4,660	Neutral	Bearish	Neutral	Middle Bands	Upper	Upper	Upper
KUJAJK	340	324	316	328	322	Neutral	Bullish	Neutral	Middle Bands	Under	Upper	Upper
KLBFJK	1,595	1,575	1,515	1,595	1,560	Neutral	Bullish	Neutral	Middle Bands	Upper	Upper	Under
KRASJK	565	505	540	565	530	Overbought	Bearish	Overbought	Lower Bands	Under	Under	Under
LPCJKJ	4,980	4,450	4,210	4,980	4,540	Neutral	Bearish	Neutral	Middle Bands	Upper	Upper	Under
LPKRJK	850	795	775	850	795	Neutral	Bearish	Neutral	Middle Bands	Upper	Upper	Under
LPFJKJ	15,850	14,550	13,025	15,850	15,075	Neutral	Bearish	Neutral	Middle Bands	Upper	Upper	Under
LSIPJK	1,405	1,415	1,360	1,470	1,385	Neutral	Bullish	Neutral	Middle Bands	Upper	Under	Under
MAINJK	1,265	1,025	1,225	1,115	1,060	Overbought	Bullish	Overbought	Middle Bands	Under	Under	Under
MAPIJK	6,475	6,625	6,225	6,775	6,500	Neutral	Bullish	Neutral	Middle Bands	Upper	Upper	Upper
MASAJK	252	228	226	252	230	Neutral	Bearish	Neutral	Middle Bands	Under	Under	Under
MNCNJK	1,820	2,020	1,720	2,050	1,900	Overbought	Bearish	Overbought	Middle Bands	Upper	Upper	Upper
MPPAJK	1,010	815	850	930	870	Overbought	Bearish	Overbought	Lower Bands	Under	Under	Under
MTLAJK	332	330	322	332	330	Neutral	Bullish	Neutral	Middle Bands	Upper	Upper	Upper
MYORJK	2,140	2,260	2,000	2,450	2,180	Neutral	Bullish	Neutral	Middle Bands	Upper	Upper	Upper
PGASJK	2,470	2,430	2,340	2,470	2,420	Neutral	Bullish	Neutral	Middle Bands	Under	Under	Under
PTBAJK	13,075	10,850	12,300	12,500	11,400	Overbought	Bullish	Neutral	Lower Bands	Under	Under	Under
RALSJK	1,190	1,300	1,260	1,385	1,345	Neutral	Bearish	Neutral	Middle Bands	Upper	Upper	Upper
ROTIJK	1,670	1,670	1,620	1,740	1,645	Neutral	Bearish	Neutral	Middle Bands	Upper	Upper	Upper
SCMAJK	2,950	2,840	2,790	2,900	2,840	Neutral	Bullish	Neutral	Middle Bands	Under	Upper	Upper
SCROJK	2,150	2,070	2,000	2,150	2,100	Neutral	Bullish	Neutral	Middle Bands	Upper	Upper	Upper
SIMPJK	635	605	600	635	620	Neutral	Bullish	Neutral	Middle Bands	Under	Upper	Upper
SMCBJK	940	900	870	905	890	Neutral	Bullish	Neutral	Middle Bands	Under	Under	Under
SMGRJK	8,875	8,650	8,600	8,875	8,725	Neutral	Bearish	Neutral	Middle Bands	Under	Under	Under
SMRAJK	1,415	1,335	1,340	1,445	1,390	Neutral	Bearish	Neutral	Middle Bands	Under	Under	Under
SRILJK	392	348	282	362	320	Overbought	Bearish	Neutral	Upper Bands	Upper	Upper	Upper
SSIAJK	790	700	695	770	730	Neutral	Bearish	Neutral	Lower Bands	Under	Upper	Upper
SSMSJK	1,725	1,690	1,630	1,710	1,680	Neutral	Bullish	Neutral	Middle Bands	Under	Upper	Upper
TLKMJK	4,450	4,370	4,310	4,450	4,360	Neutral	Bullish	Neutral	Middle Bands	Upper	Upper	Upper
TOTLJK	820	810	790	815	805	Neutral	Bullish	Neutral	Middle Bands	Upper	Upper	Upper
UNTRJK	26,325	25,050	24,750	26,325	25,200	Neutral	Bullish	Neutral	Middle Bands	Under	Under	Upper
UNVRJK	44,000	46,350	44,325	46,450	45,500	Overbought	Bullish	Neutral	Upper Bands	Upper	Upper	Upper

Source : Reliance Research

### Legend :

- Movement: Bullish and Bearish (Indicator Stochastic)
- Momentum: Oversold, Overbought and Neutral (Indicator RSI)
- Resistance Fractal: Strong Resistance
- Support Fractal: Strong Support
- Green: Good Conditions
- Red: Poor Conditions



## HEAD OFFICE

### Reliance Building

Jl. Pluit Sakti Raya No. 27AB,  
Pluit  
Jakarta 14450  
T. +62 21 661 7768  
F. +62 21 661 9884

## RESEARCH DIVISION

### Robertus Yanuar Hardy

*robertus@reliance-securities.com*

### Rio Adrianus

*rio.adrianus@reliance-securities.com*

### Lanjar Nafi Taulat I

*lanjar@reliance-securities.com*

### Aji Setiawan

*aji@reliance-securities.com*

### Shanti Dwi Jayanti

*santi@reliance-securities.com*

Head of Research

Research Analyst

Technical Research Analyst

Associate Research Analyst

Associate Research Analyst

## EQUITY DIVISION

### Jakarta- Pluit

Jl. Pluit Sakti Raya No. 27AB,  
Pluit  
Jakarta 14450  
T. +62 21 661 7768  
F. +62 21 661 9884

### Bandung

Jl.Cisangkuy No.58  
Bandung 40115  
T. +62 22 721 8200  
F. +62 22 721 9255

### Surabaya - Gubeng

Jl. Bangka No. 22  
Surabaya 60281  
T. +62 31 501 1128  
F. +62 31 503 3196

### Makassar

Jl. Boto Lempangan No. 34 J  
Makassar- Sulawesi Selatan  
T. +62 411 3632388  
F. +62 411 3614634

### Jakarta - Sudirman

Menara Batavia Ground Floor  
Jl.KH.Mas Mansyur Kav 126  
Jakarta 10220  
T. +62 21 57905455  
F. +62 21 57950728

### Tasikmalaya

Ruko Tasik Indah Plaza No.21  
Jl. KHZ Mustofa No. 345  
Tasikmalaya 46121  
T. +62 265 345000  
F. +62 265 345003

### Surabaya - Diponegoro

Jl. Diponegoro No.26D  
Surabaya 60261  
T. +62 31 567 0388  
F. +62 31 561 0528

### Medan

Jl. Teuku Amir Hamzah No.40-O  
Medan 20117  
T. +62 61 6638592  
F. +62 61 6638023

### Jakarta - Kebon Jeruk

Plaza Kebon Jeruk  
Jl.Raya Perjuangan Blok A/2  
Jakarta 11530  
T. +62 21 532 4074  
F. +62 21 536 2157

### Malang

Jl. Guntur No. 19  
Malang 65112  
T. +62 341 347 611  
F. +62 341 347 615

### Bali - Denpasar

Dewata Square Blok A3  
Jl. Letda Tantular Renon  
Denpasar 802361  
T. +62 361 225099  
F. +62 361 245099

### Tangerang

Jl. Pahlawan Seribu Ruko BSD  
Sektor 7 Blok RK kav. 9  
Tangerang 15310  
T. +62 21 5387495  
F. +62 21 5387494

### Pekanbaru

Jl. Jendral Sudirman No.73  
Pekanbaru-Riau  
T. +62 761 848414  
F. +62 761 849456

### Pontianak

Jl. MT Haryono No. 6  
Pontianak 78121  
T. +62 561 575674  
F. +62 561 575670

### Jakarta - Centro

Ruko Centro Residence Kav. 4-5  
Tower C Lt. 1 No. 26-29  
Jl. Macan, Daan Mogot  
Jakarta 14450  
T. +62 21 56945227  
F. +62 21 56945226

### Solo

Jl. Slamet Riyadi 330<sup>a</sup>  
Solo 57145  
T. +62 271 736599  
F. +62 271 733478

### Balikpapan

Ruko Bukit Damai Indah  
Blok I, No. 3, Rt.34  
Jl. MT. Haryono, Gunung  
Bahagia, Balikpapan Selatan  
76114  
T. +62 542 746313  
F. +62 542 746317

**IDX CORNER & INVESTMENT GALLERY****President University**

Resto Plaza 1F - Jababeka  
Education Park  
Jl. Ki Hajar Dewantara Raya  
Cikarang - Bekasi 17550  
T. +62 21 89106030

**Universitas Siliwangi  
Tasikmalaya**

Jl. Siliwangi No. 24  
Tasikmalaya 46151  
T. +62 265 323685  
F. +62 265 323534

**Politeknik Kediri**

Jl. Mayor Bismo No. 27  
Kediri 64121  
T. +62 354 683128  
F. +62 354 683128

**Universitas Muhammadiyah  
Sidoarjo**

Jl. Majapahit 666 B  
Sidoarjo, Jawa Timur  
T. +62 31 8945444  
F. +62 31 8949333

**Universitas Tanjungpura  
Pontianak**

Jl. Jendral Ahmad Yani  
Pontianak 78124  
T. +62 561 743465  
F. +62 561 766840

**Universitas Pesantren Tinggi  
Darul Ulum**

Kompleks Pp Darul Ulu,  
Peterongan  
Jombang, Jawa Timur 60281  
T. +62 321 873655  
F. +62 321 875771

**STIE "AUB" Surakarta**

Jl. Mr. Sartono 97, Cengklik  
Nusukan, Surakarta 57135  
T. +62 271 854803  
F. +62 271 853084

**Universitas Surabaya**

Jl. Raya Kalirungkut  
Surabaya 60293  
T. +62 31 298 1203  
F. +62 31 298 1204

**Universitas Muhammadiyah  
Gresik**

Jl. Sumatra 101 GKB  
Gresik 61121  
T. +62 31 395 1414  
F. +62 31 395 2585

**Universitas Negeri Malang**

Jl. Surabaya No. 6  
Malang 65145  
T. +62 341 585914  
F. +62 341 55288

**Universitas Muhammadiyah  
Malang**

Jl. Raya Tlogomas 246  
Malang 65144  
T. +62 341 464318-9  
F. +62 341 460782

**FSEI IAIN Antasari**

Jl. Ahmad Yani Km. 4,5  
Banjarmasin  
T. + 62 511 3265783

**STIE Malangkececwara**

Jl. Terusan Candi Kalasan  
Malang 65142  
T. +62 341 491813  
F. +62 341 495619

**STIESIA Surabaya**

Jl. Menur Pumpungan 30  
Surabaya  
T. +62 31 5947505  
F. +62 31 5932218

**Universitas 17 Agustus  
1945 Banyuwangi**

Jl. Adi Sucipto 26  
Banyuwangi, Jawa Timur  
T. +62 333 419613  
F. +62 333 419163

**STIE Tri Bhakti**

Jl. Teuku Umar No. 24  
Cut Meutia Setiakawan,  
Bekasi  
T. +62 21 82429400,  
82429500  
F. +62 271 726156

**Universitas Islam  
Kalimantan**

Jl. Adiyaksa No. 2, Kayu  
Tangi, Banjarmasin  
T. + 62 511 3303871  
F. + 62 511 3303871

**STIKOM Bali**

Jalan Puputan No. 86, Renon,  
Denpasar  
T. +62361 244445  
F. +62361 264773

**Universitas Muhammadiyah  
Pontianak**

Fakultas Ekonomi UM  
Pontianak  
Jl. Ahmad Yani, No. 111,  
Pontianak 78124  
T. +62561 743465  
F. +62561 766840

**Universitas Negeri  
Makassar**

Fakultas Ekonomi Gedung BT  
Lt.2  
Jl. A.P. Pettarani, Kampus  
UNM, Gunungsari Baru  
Makassar 90222  
T. +62 411 889464 / 881244  
F. +62 411 887604

**STIE AAS Surakarta**

Jl. Slamet Riyadi No. 361,  
Kartasura, Surakarta  
T. +62 271 726156  
F. +62 271 726156

**UPN "Veteran" Yogyakarta**

Jl. Babarsari 2, Tambak Bayan  
Yogyakarta  
T. +62 274 485268  
F. +62 274 487147

**Disclaimer:**

Information, opinions and recommendations contained in this document are presented by PT Reliance Sekuritas Indonesia Tbk. from sources that are considered reliable and dependable. This document is not an offer, invitation or any kind of representations to decide to buy or sell stock. Investment decisions taken based on this document is not the responsibility of PT Reliance Sekuritas Indonesia Tbk. PT Reliance Sekuritas Indonesia Tbk. reserves the right to change the contents of this document at any time without prior notice.